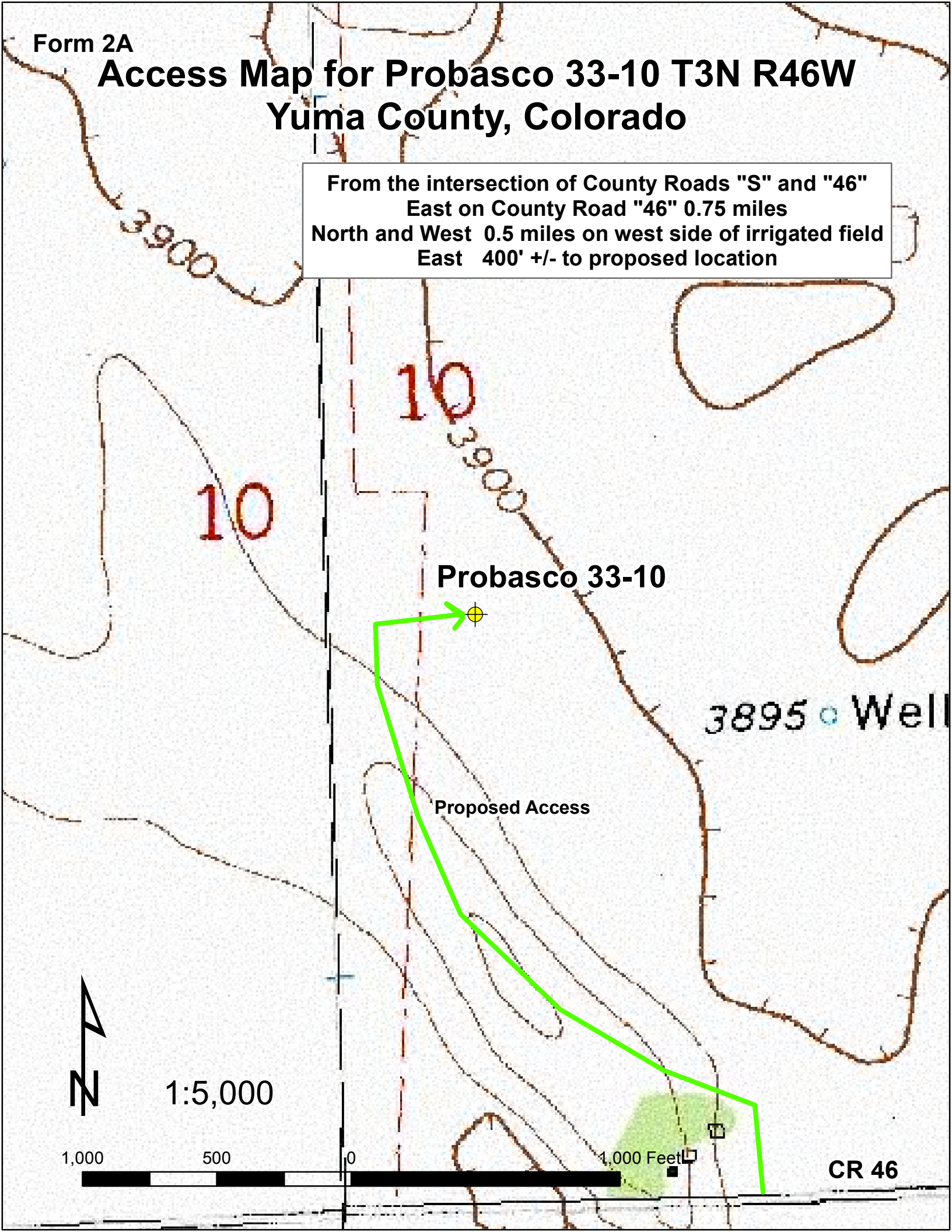


Access Map for Probasco 33-10 T3N R46W Yuma County, Colorado

From the intersection of County Roads "S" and "46"
East on County Road "46" 0.75 miles
North and West 0.5 miles on west side of irrigated field
East 400' +/- to proposed location



Probasco 33-10

Proposed Access

3895 Well

1,000 Feet

CR 46

1:5,000

1,000

500

0