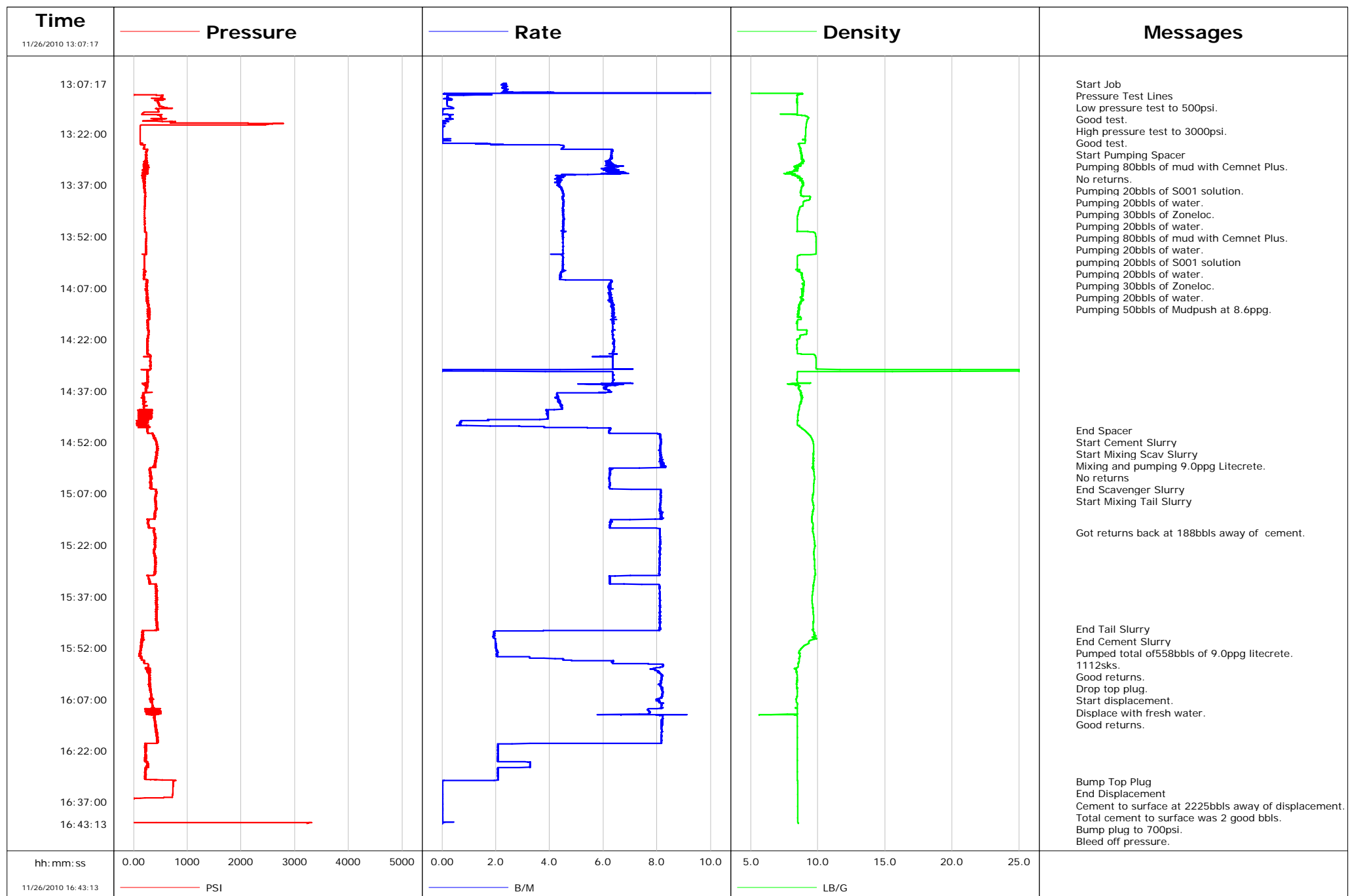
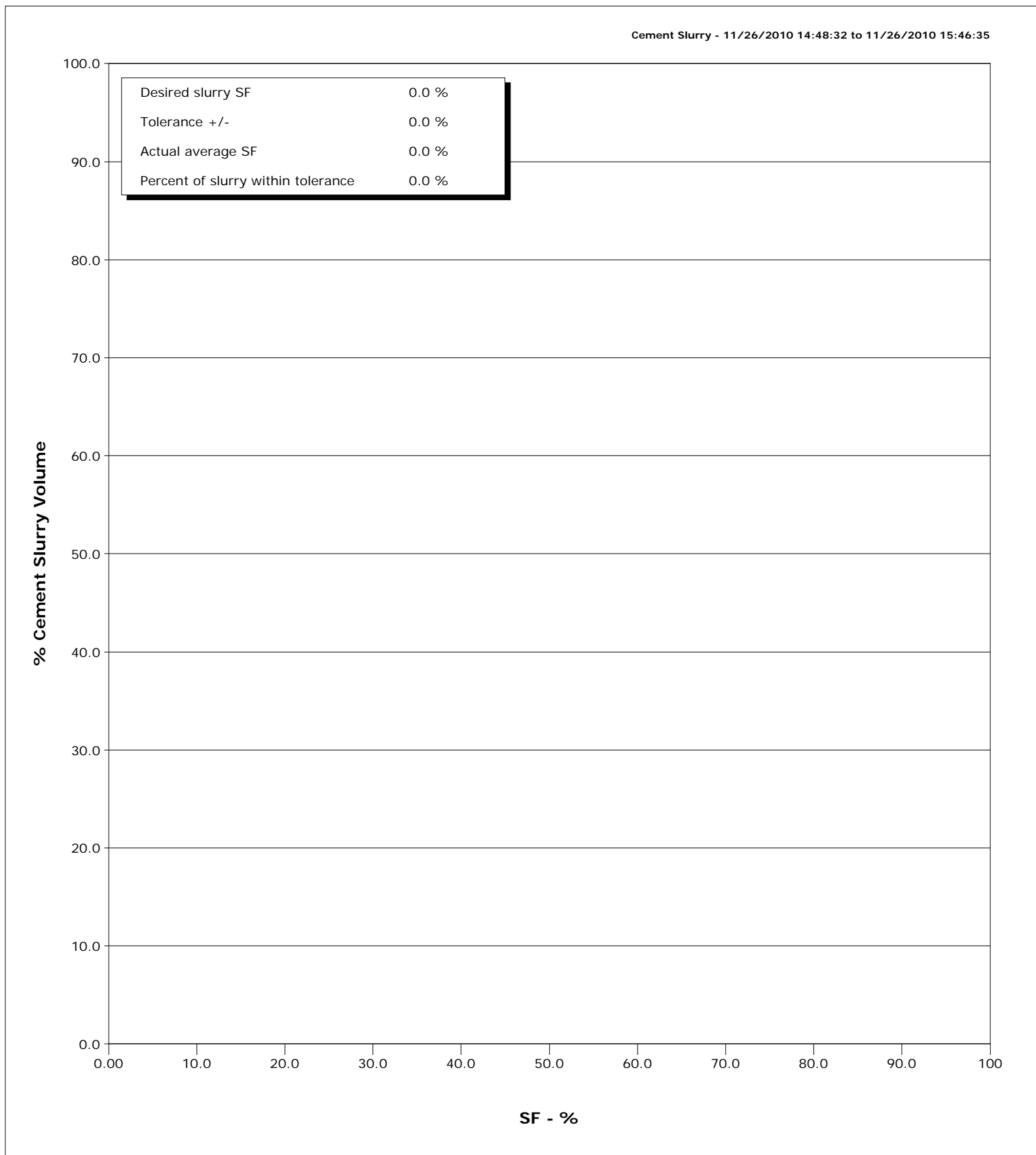


Well SGU 8516A-36 B36 496
Field STORY GULCH
Engineer JEFF PATTERSON
Country United States

Client ENCANA
SIR No. B708-00197
Job Type 9 5/8" SURFACE
Job Date 11-26-2010



Well	SGU 8516A-36 B36 496	Client	ENCANA
Field	STORY GULCH	SIR No.	B708-00197
Engineer	JEFF PATTERSON	Job Type	9 5/8" SURFACE
Country	United States	Job Date	11-26-2010



Cementing Service Report

				Customer ENCANA			Job Number B708-00197		
Well SGU 8516A-36 B36 496 SGU 8516A-36 B36 496			Location (legal) B-36		Schlumberger Location GRAND JUNCTION, COLORADO			Job Start Nov/26/2010	
Field STORY GULCH		Formation Name/Type Shale		Deviation deg	Bit Size 14.8 in		Well MD 3023.0 ft		
County GARFIELD		State/Province Colorado		BHP psi	BHST 115 degF		BHCT 95 degF		
Well Master 0631227412		API/UWI						Pore Press. Gradient lb/gal	
Rig Name PATTERSON 308	Drilled For Gas		Service Via Land	Casing/Liner					
	Depth, ft	Size, in	Weight, lb/ft	Grade	Thread				
Offshore Zone	Well Class New		Well Type Development	3023.0	9.6	36.0	J55	8RD	
	0.0	0.0	0.0						
Drilling Fluid Type		Max. Density lb/gal	Plastic Viscosity cP	Tubing/Drill Pipe					
T/D	Depth, ft	Size, in	Weight, lb/ft	Grade	Thread				
Service Line Cementing	Job Type 9 5/8" SURFACE								
Max. Allowed Tub. Press 2500 psi	Max. Allowed Ann. Press psi		WH Connection 9 5/8"Cement Head	Perforations/Open Hole					
	Top, ft	Bottom, ft	shot/ft	No. of Shots	Total Interval ft				
	ft	ft							
	ft	ft			Diameter in				
	Treat Down Casing	Displacement 230.3 bbl		Packer Type		Packer Depth ft			
	Tubing Vol. bbl	Casing Vol. 233.7 bbl		Annular Vol. 384.0 bbl		Openhole Vol. 635.0 bbl			
Casing/Tubing Secured <input checked="" type="checkbox"/>	1 Hole Vol. Circulated prior to Cement <input checked="" type="checkbox"/>		Casing Tools			Squeeze Job			
Lift Pressure 1496 psi	Shoe Type Guide		Squeeze Type						
Pipe Rotated <input type="checkbox"/>	Pipe Reciprocated <input type="checkbox"/>		Shoe Depth 3023.0 ft			Tool Type			
No. Centralizers	Top Plugs 1		Bottom Plugs	Stage Tool Type			Tool Depth ft		
Cement Head Type	Stage Tool Depth ft			Tail Pipe Size in					
Job Scheduled For Nov/26/2010	Arrived on Location Nov/26/2010		Leave Location Nov/26/2010	Collar Type Float			Tail Pipe Depth ft		
	Collar Depth 2979.0 ft			Sqz. Total Vol. bbl					
Date	Time 24-hr clock	Treating Pressure PSI	Flow Rate B/M	Density LB/G	Volume BBL	Message			
11/26/2010	13:07:17	-33	2.2	0.09	0.0	Started Acquisition			
11/26/2010	13:07:20	-34	2.4	0.09	0.2	Start Job			
11/26/2010	13:07:26	-34	2.3	0.09	0.4	Pressure Test Lines			
11/26/2010	13:07:27	-34	2.3	0.09	0.4	Low pressure test to 500psi.			
11/26/2010	13:07:28	-34	2.3	0.09	0.5	High pressure test to 3000psi.			
11/26/2010	13:07:29	-34	2.4	0.09	0.5	Start Pumping Spacer			
11/26/2010	13:07:30	-34	2.4	0.09	0.5	Pumping 80bbbls of mud with Cemnet Plus.			
11/26/2010	13:07:31	-34	2.3	0.09	0.6	Pumping 20bbbls of S001 solution.			
11/26/2010	13:08:57	-35	2.3	0.09	3.9				
11/26/2010	13:10:37	4	1.4	8.59	8.7				
11/26/2010	13:12:17	406	0.2	8.46	9.4				
11/26/2010	13:13:57	482	0.2	8.46	9.7				
11/26/2010	13:15:37	472	0.0	8.47	10.0				
11/26/2010	13:17:17	509	0.3	9.31	10.2				
11/26/2010	13:18:57	1577	0.1	9.18	10.5				
11/26/2010	13:20:37	126	0.0	9.12	10.5				
11/26/2010	13:22:17	125	0.0	9.09	10.6				
11/26/2010	13:23:57	124	0.0	9.09	10.6				
11/26/2010	13:25:37	198	4.5	8.64	13.0				
11/26/2010	13:27:17	235	6.3	8.77	21.8				
11/26/2010	13:28:40	231	6.3	8.80	30.5	Pumping 30bbbls of Zoneloc.			

Well			Field		Job Start	Customer	Job Number
SGU 8516A-36 B36 496 SGU 8516A-36 B36 496			STORY GULCH		Nov/26/2010	ENCANA	B708-00197
Date	Time 24-hr clock	Treating Pressure PSI	Flow Rate B/M	Density LB/G	Volume BBL	Message	
11/26/2010	13:28:42	240	6.3	8.79	30.7	Pumping 20bbls of water.	
11/26/2010	13:28:57	242	6.3	8.82	32.3		
11/26/2010	13:30:37	244	6.2	8.89	42.7		
11/26/2010	13:30:44	232	6.4	8.66	43.4	Pumping 20bbls of water.	
11/26/2010	13:30:46	193	6.2	8.75	43.6	Pumping 30bbls of Zoneloc.	
11/26/2010	13:31:47	237	6.5	8.41	50.0	Pumping 50bbls of Mudpush at 8.6ppg.	
11/26/2010	13:32:17	231	6.3	8.43	53.2		
11/26/2010	13:33:57	198	4.4	8.21	63.7		
11/26/2010	13:35:37	192	4.4	8.68	71.0		
11/26/2010	13:37:17	201	4.3	8.87	78.2		
11/26/2010	13:38:57	216	4.5	8.72	85.6		
11/26/2010	13:40:37	207	4.5	9.46	93.1		
11/26/2010	13:42:17	212	4.5	8.93	100.6		
11/26/2010	13:43:57	209	4.5	8.64	108.2		
11/26/2010	13:45:37	210	4.5	8.53	115.7		
11/26/2010	13:47:17	211	4.5	8.47	123.2		
11/26/2010	13:48:57	208	4.5	8.47	130.7		
11/26/2010	13:50:37	206	4.6	9.45	138.2		
11/26/2010	13:52:17	236	4.5	9.86	145.7		
11/26/2010	13:53:57	234	4.5	9.87	153.2		
11/26/2010	13:55:37	231	4.5	9.87	160.7		
11/26/2010	13:57:17	229	4.4	9.22	168.2		
11/26/2010	13:58:57	196	4.5	8.47	175.7		
11/26/2010	14:00:37	204	4.5	8.46	183.2		
11/26/2010	14:02:17	204	4.5	8.63	190.7		
11/26/2010	14:03:57	189	4.4	8.83	198.1		
11/26/2010	14:05:37	239	6.3	8.99	207.2		
11/26/2010	14:07:17	254	6.3	8.90	217.6		
11/26/2010	14:08:57	250	6.3	8.85	228.0		
11/26/2010	14:10:37	245	6.2	8.88	238.5		
11/26/2010	14:12:17	280	6.3	8.63	249.0		
11/26/2010	14:13:57	268	6.4	8.55	259.6		
11/26/2010	14:15:37	288	6.4	8.59	270.2		
11/26/2010	14:17:17	268	6.4	8.42	280.8		
11/26/2010	14:18:57	261	6.3	8.47	291.4		
11/26/2010	14:20:37	281	6.3	9.03	301.9		
11/26/2010	14:22:17	266	6.4	8.47	312.5		
11/26/2010	14:23:57	256	6.4	8.44	323.2		
11/26/2010	14:25:37	257	6.3	8.46	333.8		
11/26/2010	14:27:17	314	6.3	9.86	344.4		
11/26/2010	14:28:57	320	6.3	9.87	355.0		
11/26/2010	14:30:37	316	6.3	9.87	365.5		
11/26/2010	14:32:17	259	6.3	8.47	372.5		
11/26/2010	14:33:57	271	6.4	8.46	383.1		
11/26/2010	14:35:37	254	6.1	8.69	393.6		
11/26/2010	14:37:17	225	6.3	8.69	403.8		
11/26/2010	14:38:57	190	4.3	8.84	411.6		
11/26/2010	14:40:37	200	4.4	8.74	418.9		
11/26/2010	14:42:17	199	4.5	8.63	426.3		
11/26/2010	14:43:57	202	3.9	8.53	432.9		
11/26/2010	14:45:37	163	1.7	8.50	439.0		
11/26/2010	14:47:17	203	2.4	8.57	440.3		
11/26/2010	14:48:30	263	6.3	8.99	446.5	End Spacer	
11/26/2010	14:48:32	260	6.3	9.01	446.7	Start Cement Slurry	

Well			Field		Job Start	Customer	Job Number
SGU 8516A-36 B36 496 SGU 8516A-36 B36 496			STORY GULCH		Nov/26/2010	ENCANA	B708-00197
Date	Time 24-hr clock	Treating Pressure PSI	Flow Rate B/M	Density LB/G	Volume BBL	Message	
11/26/2010	14:48:35	257	6.2	9.04	447.0	Mixing and pumping 9.0ppg Litecrete.	
11/26/2010	14:48:37	252	6.2	9.06	447.2	No returns	
11/26/2010	14:48:57	259	6.2	9.14	449.3		
11/26/2010	14:49:06	260	6.2	9.19	450.2	End Scavenger Slurry	
11/26/2010	14:49:07	260	6.2	9.19	450.3	Start Mixing Tail Slurry	
11/26/2010	14:50:37	389	8.1	9.52	461.8		
11/26/2010	14:52:17	428	8.2	9.67	475.3		
11/26/2010	14:53:57	455	8.1	9.71	488.8		
11/26/2010	14:55:37	437	8.2	9.68	502.4		
11/26/2010	14:57:17	421	8.2	9.67	515.9		
11/26/2010	14:58:57	403	8.2	9.66	529.5		
11/26/2010	15:00:37	311	6.2	9.72	541.1		
11/26/2010	15:02:17	307	6.2	9.76	551.5		
11/26/2010	15:03:57	326	6.2	9.72	561.9		
11/26/2010	15:05:37	340	6.2	9.70	572.3		
11/26/2010	15:07:17	412	8.1	9.64	585.6		
11/26/2010	15:08:57	394	8.1	9.60	599.2		
11/26/2010	15:10:37	408	8.1	9.68	612.7		
11/26/2010	15:12:17	395	8.1	9.65	626.2		
11/26/2010	15:13:57	384	8.1	9.58	639.8		
11/26/2010	15:15:37	263	6.3	9.62	651.3		
11/26/2010	15:17:17	385	8.1	9.64	662.1		
11/26/2010	15:18:23	379	8.1	9.66	671.1	Got returns back at 188bbls away of cement.	
11/26/2010	15:18:57	403	8.1	9.68	675.7		
11/26/2010	15:20:37	409	8.1	9.75	689.2		
11/26/2010	15:22:17	396	8.1	9.79	702.7		
11/26/2010	15:23:57	371	8.1	9.72	716.2		
11/26/2010	15:25:37	395	8.1	9.74	729.7		
11/26/2010	15:27:17	402	8.1	9.77	743.2		
11/26/2010	15:28:57	392	8.1	9.78	756.7		
11/26/2010	15:30:37	390	8.1	9.83	770.2		
11/26/2010	15:32:17	293	6.3	9.75	781.2		
11/26/2010	15:35:37	431	8.1	9.64	806.1		
11/26/2010	15:37:17	426	8.1	9.59	819.6		
11/26/2010	15:38:57	433	8.1	9.60	833.1		
11/26/2010	15:40:37	442	8.1	9.65	846.6		
11/26/2010	15:42:17	438	8.1	9.68	860.1		
11/26/2010	15:43:57	436	8.1	9.70	873.6		
11/26/2010	15:45:37	442	8.1	9.67	887.1		
11/26/2010	15:46:34	452	8.1	9.69	894.8	End Tail Slurry	
11/26/2010	15:46:35	452	8.1	9.69	894.9	End Cement Slurry	
11/26/2010	15:46:36	450	8.1	9.69	895.1	Pumped total of 558bbls of 9.0ppg litecrete.	
11/26/2010	15:46:42	448	8.1	9.68	895.9	Drop top plug.	
11/26/2010	15:46:43	446	8.1	9.59	896.0	Start displacement.	
11/26/2010	15:47:17	163	1.9	9.68	898.9		
11/26/2010	15:48:57	178	1.9	9.59	902.1		
11/26/2010	15:50:37	135	2.0	9.36	905.4		
11/26/2010	15:52:17	124	2.0	8.77	908.7		
11/26/2010	15:53:57	118	2.0	8.67	912.1		
11/26/2010	15:55:37	151	4.5	8.62	917.4		
11/26/2010	15:57:17	279	8.2	8.55	928.9		
11/26/2010	15:58:57	268	8.0	8.43	942.3		
11/26/2010	16:00:37	294	8.2	8.48	955.8		
11/26/2010	16:02:17	290	8.1	8.44	969.4		

Well			Field		Job Start		Customer		Job Number	
SGU 8516A-36 B36 496 SGU 8516A-36 B36 496			STORY GULCH		Nov/26/2010		ENCANA		B708-00197	
Date	Time 24-hr clock	Treating Pressure PSI	Flow Rate B/M	Density LB/G	Volume BBL	Message				
11/26/2010	16:05:37	320	8.2	8.48	996.6					
11/26/2010	16:07:17	328	8.0	8.41	1010.2					
11/26/2010	16:08:57	360	8.2	8.49	1023.7					
11/26/2010	16:10:37	283	7.7	8.49	1036.9					
11/26/2010	16:12:17	389	8.2	8.47	1050.0					
11/26/2010	16:13:57	406	8.2	8.49	1063.7					
11/26/2010	16:15:37	433	8.2	8.49	1077.3					
11/26/2010	16:17:17	447	8.2	8.49	1090.9					
11/26/2010	16:18:57	442	8.2	8.49	1104.5					
11/26/2010	16:20:37	234	2.1	8.49	1113.9					
11/26/2010	16:22:17	219	2.1	8.49	1117.3					
11/26/2010	16:23:57	225	2.1	8.49	1120.8					
11/26/2010	16:25:37	255	3.3	8.49	1124.7					
11/26/2010	16:27:17	219	2.1	8.49	1129.7					
11/26/2010	16:28:57	231	2.1	8.49	1133.2					
11/26/2010	16:30:37	666	2.1	8.49	1136.6					
11/26/2010	16:31:04	738	0.0	8.51	1136.8	Bump Top Plug				
11/26/2010	16:31:05	742	0.0	8.51	1136.8	End Displacement				
11/26/2010	16:31:06	738	0.0	8.52	1136.8	Cement to surface at 2225bbls away of displacement.				
11/26/2010	16:31:07	735	0.0	8.52	1136.8	Total cement to surface was 2 good bbls.				
11/26/2010	16:31:08	735	0.0	8.51	1136.8	Got 1bbl back				
11/26/2010	16:32:17	736	0.0	8.51	1136.8					
11/26/2010	16:33:35	731	0.0	8.52	1136.9	End Job				
11/26/2010	16:33:57	730	0.0	8.52	1136.9					
11/26/2010	16:35:37	675	0.0	8.52	1136.9					
11/26/2010	16:37:17	-11	0.0	8.52	1136.9					
11/26/2010	16:38:57	-11	0.0	8.52	1137.0					
11/26/2010	16:40:37	-11	0.0	8.52	1137.0					

Post Job Summary

Average Pump Rates, bbl/min					Volume of Fluid Injected, bbl							
Slurry 5.3	N2	Mud	Maximum Rate 25.0		Total Slurry 1137.1	Mud 0.0	Spacer 446.3	N2				
Treating Pressure Summary, psi					Breakdown Fluid							
Maximum 3313	Final 3220	Average 314	Bump Plug to 700	Breakdown	Type	Volume bbl	Density lb/gal					
Avg. N2 Percent %	Designed Slurry Volume 230.0 bbl	Displacement 241.3 bbl	Mix Water Temp 65 degF	Cement Circulated to Surface?		<input checked="" type="checkbox"/>	Volume	2.0 bbl				
				Washed Thru Perfs		<input type="checkbox"/>	To	ft				
Customer or Authorized Representative RANDY BURKE			Schlumberger Supervisor JEFF PATTERSON			Circulation Lost	<input type="checkbox"/>	Job Completed <input checked="" type="checkbox"/>				
						-						