

Downhole Schematic for N Parachute MF03D-16 H17 696



Project :North Piceance

Area : N Parachute

As Of : 09/28/2011

API # :05045186950000

County :

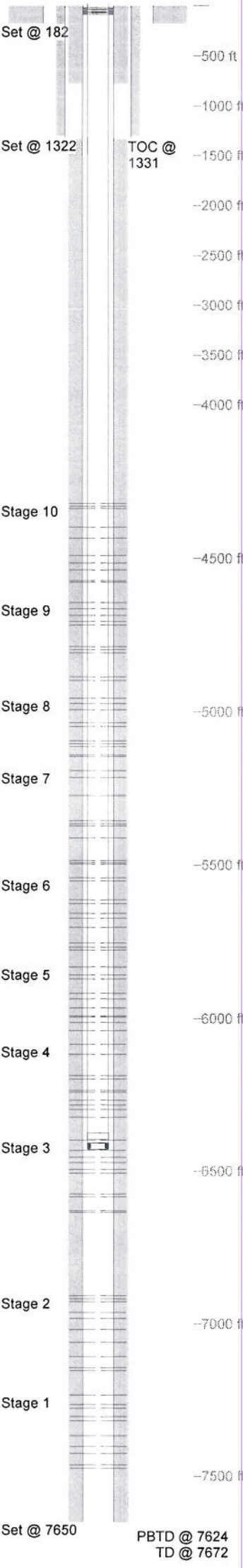
GL : 5654.0 ft

Surface Location : SENE/Lot7 Sec 17 T6S - R96W 6t

BHL : Lot 6-16-6S-96 W 6th PM

KB to GL : 22.0 ft

KB : 5676.0 ft



Casing Details		Hole	Casing	Mass	Set At	Length	Thread	Grade	Description
Section	Conductor	26.000	16	0	182	182			16"- 3/8" WT
Surface		12.250	9.625	0	1,322	2	LT&C		Float Shoe
			9.625	36	1,321	20	LT&C	J55	Shoe Jt.
			9.625	36	1,301	1,274	ST&C	J55	Casing
			9.625	36	27	5	LT&C	J55	Wellhead
			9.625	36	22	26	LT&C	J55	Landing Joint
Production	8.750			0	7,650	2	Butt		Shoe
			4.5	11.6	7,649	23	Butt	E-80	Casing
				0	7,626	2	Butt		Float Collar
			4.5	11.6	7,624	1,451	Butt	E-80	Casing
			4.5	11.6	6,173	23	Butt	E-80	Marker
			4.5	11.6	6,151	2,015	Butt	E-80	Casing
			4.5	11.6	4,136	23	Butt	E-80	Marker
	4.5	11.6	4,113	4,116	Butt	E-80	Casing		
Cement Details									
Section	Sequence		Top	Density	Blend / Additives				
Production	Scavenger		0	12.0	MUDPUSH II / 30 bbl 100# D182+6600#D031				
	Lead		1,331	12.5	12.5ppg NPR (Poz A) / 5.0% D044+0.2% D046 + 1.2% D113 + 0.5% D182 + 0.25 PPS D029 + 2.0% D079				
	Tail		3,039	13.0	13.0 PPG Poz "G" - Rockies Correct / 5.0% D044 + 35% D178+3.0% D020 + 0.50% D182 + 0.750% D112 +0.40% D201% +0.2% D065+ 0.2% D046 + 0.25 % D029 +11% D035				
Surface	Lead		0	12.5	"G" / G+2.0%D079+0.2%D46+0.25 pps D29				
Conductor	Tail		908	14.0	"G" / G+1%D79+0.2%D46+0.25pps D29				
	Lead		0	13.0	Control Set C /				
Tubing and Downhole Equipment									
O.D.	Length	Depth	Description						
0.000	22.00	22.00	KB						
7.063	0.80	22.80	7 1/16" Woodgroup						
3.063	6,352.45	6,375.25	206 jts. 2 3/8" L80 4.7# Tenaris Columbian tbg.						
3.063	1.10	6,376.35	2 3/8" flag nipple						
3.063	30.50	6,406.85	1 jt. 2 3/8" L80 4.7# Tenaris Columbian tbg.						
3.063	1.10	6,407.95	2 3/8" Seating nipple						
3.063	10.10	6,418.05	2 3/8" L80 pup jt.						
Perforations									
Stage 1						Stage 5			
	Date	From	To	Shots		Date	From	To	Shots
	09/10/2011	7,474	7,475	3		09/15/2011	6,039	6,040	3
		7,463	7,464	3			6,013	6,014	3
		7,425	7,426	3			5,995	5,996	3
		7,402	7,403	3			5,991	5,992	3
		7,367	7,368	3			5,966	5,967	3
		7,317	7,318	3			5,936	5,937	3
		7,304	7,305	3			5,918	5,919	3
		7,277	7,278	3			5,871	5,872	3
		7,265	7,266	3			5,858	5,859	3
		7,233	7,234	3			5,832	5,833	3
Stage 10						Stage 6			
	Date	From	To	Shots		Date	From	To	Shots
	09/20/2011	4,577	4,578	3		09/15/2011	5,777	5,778	3
		4,572	4,573	3			5,767	5,768	3
		4,537	4,538	3			5,754	5,755	3
		4,515	4,516	3			5,703	5,704	3
		4,490	4,491	3			5,673	5,674	3
		4,434	4,435	3			5,657	5,658	3
		4,398	4,399	3			5,626	5,627	3
		4,337	4,338	3			5,613	5,614	3
		4,330	4,331	3			5,552	5,553	3
		4,322	4,323	3			5,541	5,542	3
Stage 2						Stage 7			
	Date	From	To	Shots		Date	From	To	Shots
	09/13/2011	7,153	7,154	3		09/16/2011	5,497	5,498	3
		7,143	7,144	3			5,493	5,494	3
		7,107	7,108	3			5,485	5,486	3
		7,060	7,061	3			5,412	5,413	3
		7,018	7,019	3			5,372	5,373	3
		6,982	6,983	3			5,365	5,366	3
		6,962	6,963	3			5,356	5,357	3
		6,926	6,927	3			5,273	5,274	3
		6,916	6,917	3			5,214	5,215	3
		6,907	6,908	3			5,192	5,193	3
Stage 3						Stage 8			
	Date	From	To	Shots		Date	From	To	Shots
	09/14/2011	6,635	6,636	3		09/19/2011	5,146	5,147	3
		6,630	6,631	3			5,141	5,142	3
		6,583	6,584	3			5,113	5,114	3
		6,574	6,575	3			5,104	5,105	3
		6,506	6,507	3			5,094	5,095	3
		6,494	6,495	3			5,048	5,049	3
		6,472	6,473	3			5,035	5,036	3
		6,454	6,455	3			4,993	4,994	3
		6,432	6,433	3			4,973	4,974	3
		6,398	6,399	3			4,956	4,957	3
Stage 4						Stage 9			
	Date	From	To	Shots		Date	From	To	Shots
	09/14/2011	6,323	6,324	3		09/20/2011	4,898	4,899	3
		6,298	6,299	3			4,886	4,887	3
		6,283	6,284	3			4,808	4,809	3
		6,268	6,269	3			4,797	4,798	3
		6,241	6,242	3			4,787	4,788	3
		6,235	6,236	3			4,717	4,718	3
		6,198	6,199	3			4,705	4,706	3
		6,187	6,188	3			4,685	4,686	3
		6,116	6,117	3			4,664	4,665	3
		6,084	6,085	3			4,644	4,645	3
Frac Summary									
Stage 1 : 7,233 - 7,475, 30 - 0.420" shots, 8762 bbls of Slickwater Report Date: 09/13/2011									
Stage 2 : 6,907 - 7,154, 30 - 0.420" shots, 7619 bbls of Slickwater Report Date: 09/14/2011									
Stage 3 : 6,398 - 6,636, 30 - 0.420" shots, 8857 bbls of Slickwater Report Date: 09/14/2011									
Stage 4 : 6,084 - 6,324, 30 - 0.420" shots, 9142 bbls of Slickwater Report Date: 09/15/2011									
Stage 5 : 5,832 - 6,040, 30 - 0.420" shots, 13428 bbls of Slickwater Report Date: 09/15/2011									
Stage 6 : 5,541 - 5,778, 30 - 0.420" shots, 15619 bbls of Slickwater Report Date: 09/16/2011									
Stage 7 : 5,192 - 5,498, 30 - 0.420" shots, 9333 bbls of Slickwater Report Date: 09/19/2011									
Stage 8 : 4,956 - 5,147, 30 - 0.420" shots, 10762 bbls of Slickwater Report Date: 09/19/2011									
Stage 9 : 4,644 - 4,899, 30 - 0.420" shots, 15429 bbls of Slickwater Report Date: 09/20/2011									
Stage 10 : 4,322 - 4,578, 30 - 0.420" shots, 12476 bbls of Slickwater Report Date: 09/21/2011									
Comments									
207 jts. 2 3/8" L80 4.7# Tenaris Columbian tbg									