

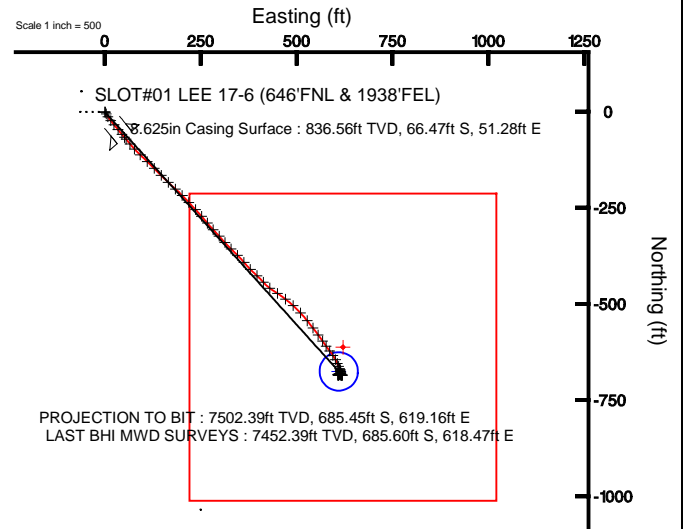
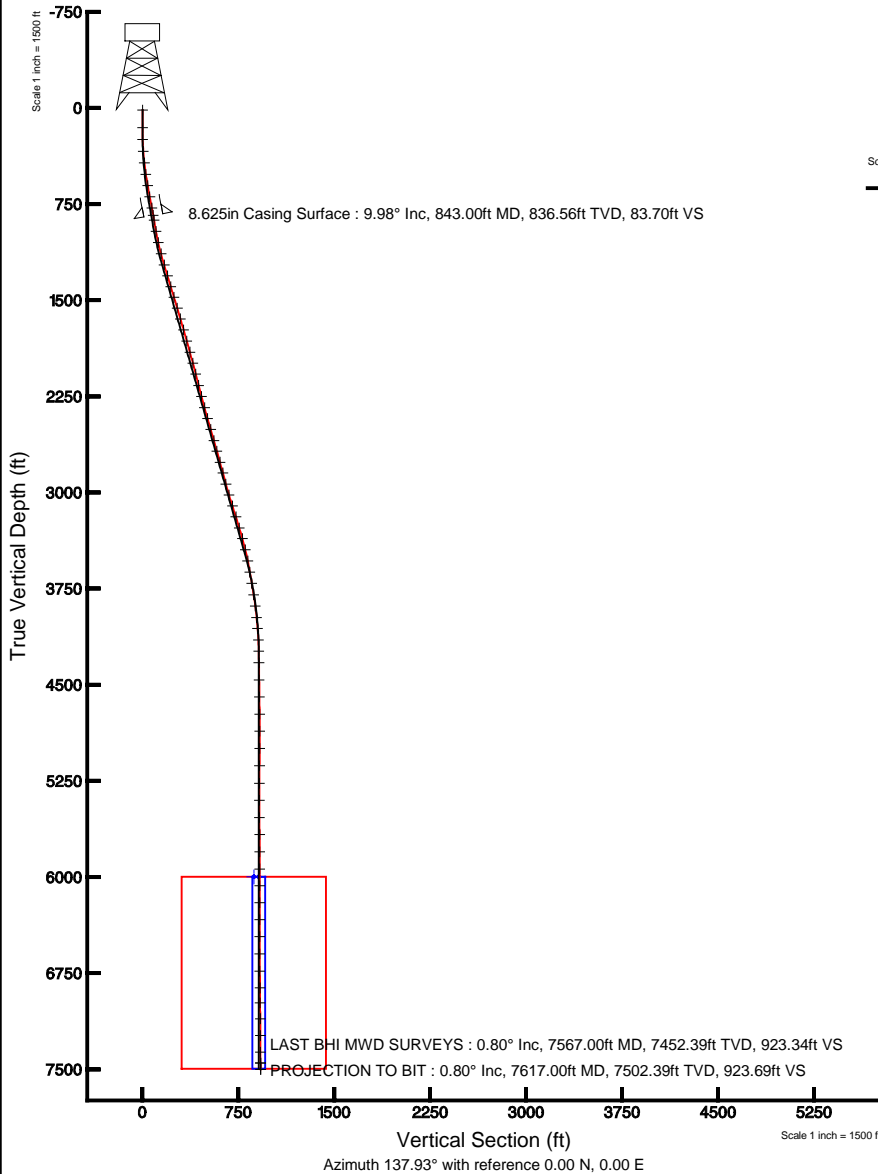


KERR MCGEE OIL & GAS ONSHORE LP

Location: COLORADO Slot: SLOT#01 LEE 17-6 (646°FNL & 1938°FEL)
Field: WELD COUNTY (KERR MCGEE) Well: LEE 17-6
Facility: SEC.06-T2N-R65W Wellbore: LEE 17-6 PWB



Plot reference wellpath is LEE 17-6 (REV-A-D) PWB	Grid System: NAD83 / Lambert Colorado SP, Northern Zone (501), US feet
True vertical depths are referenced to XTREME 15 (RKB)	North Reference: True north
Measured depths are referenced to XTREME 15 (RKB)	Scale: True distance
XTREME 15 (RKB) to Mean Sea Level: 4977 feet	Depths are in feet
Mean Sea Level to Mud line (At Slot: SLOT#01 LEE 17-6 (646°FNL & 1938°FEL)): 0 feet	Created by: cookdarm on 8/19/2011
Coordinates are in feet referenced to Slot	



BGGM (1945.0 to 2012.0) Dip: 66.89° Field: 53016.4 nT
Magnetic North is 8.75 degrees East of True North (at 8/2/2011)

To correct azimuth from Magnetic to True add 8.75 degrees
For example: if the Magnetic North Azimuth = 90 degs, then the True North Azimuth = 90 + 8.75 = 98.75



Actual Wellpath Report

LEE 17-6 AWP

Page 1 of 5



REFERENCE WELLPATH IDENTIFICATION

Operator	KERR MCGEE OIL & GAS ONSHORE LP	Slot	SLOT#01 LEE 17-6 (646'FNL & 1938'FEL)
Area	COLORADO	Well	LEE 17-6
Field	WELD COUNTY (KERR MCGEE)	Wellbore	LEE 17-6 AWB
Facility	SEC.06-T2N-R65W		

REPORT SETUP INFORMATION

Projection System	NAD83 / Lambert Colorado SP, Northern Zone (501), US feet	Software System	WellArchitect® 3.0.1
North Reference	True	User	Cookdanm
Scale	0.999958	Report Generated	9/19/2011 at 10:35:27 AM
Convergence at slot	0.51° East	Database/Source file	WA_Denver/_LEE_17-6_AWB.xml

WELLPATH LOCATION

	Local coordinates		Grid coordinates		Geographic coordinates	
	North[ft]	East[ft]	Easting[US ft]	Northing[US ft]	Latitude	Longitude
Slot Location	0.02	0.01	3222483.60	1306833.97	40°10'22.487"N	104°42'13.759"W
Facility Reference Pt			3222483.59	1306833.95	40°10'22.487"N	104°42'13.759"W
Field Reference Pt			3197771.84	1268891.29	40°04'09.600"N	104°47'36.000"W

WELLPATH DATUM

Calculation method	Minimum curvature	XTREME 15 (RKB) to Facility Vertical Datum	4977.00ft
Horizontal Reference Pt	Slot	XTREME 15 (RKB) to Mean Sea Level	4977.00ft
Vertical Reference Pt	XTREME 15 (RKB)	XTREME 15 (RKB) to Mud Line at Slot (SLOT#01 LEE 17-6 (646'FNL & 1938'FEL))	4977.00ft
MD Reference Pt	XTREME 15 (RKB)	Section Origin	N 0.00, E 0.00 ft
Field Vertical Reference	Mean Sea Level	Section Azimuth	137.93°



Actual Wellpath Report

LEE 17-6 AWP

Page 2 of 5



REFERENCE WELLPATH IDENTIFICATION

Operator	KERR MCGEE OIL & GAS ONSHORE LP	Slot	SLOT#01 LEE 17-6 (646'FNL & 1938'FEL)
Area	COLORADO	Well	LEE 17-6
Field	WELD COUNTY (KERR MCGEE)	Wellbore	LEE 17-6 AWB
Facility	SEC.06-T2N-R65W		

WELLPATH DATA (76 stations) † = interpolated/extrapolated station

MD [ft]	Inclination [°]	Azimuth [°]	TVD [ft]	Vert Sect [ft]	North [ft]	East [ft]	DLS [°/100ft]	Comments
0.00†	0.000	62.200	0.00	0.00	0.00	0.00	0.00	
15.00	0.000	62.200	15.00	0.00	0.00	0.00	0.00	
153.00	0.100	62.200	153.00	0.03	0.06	0.11	0.07	
245.00	1.800	144.800	244.98	1.48	-1.09	1.01	1.95	
338.00	4.200	151.100	337.85	6.25	-5.26	3.50	2.60	
428.00	7.100	146.900	427.40	14.96	-12.81	8.13	3.25	
518.00	8.300	142.000	516.59	26.93	-22.59	15.17	1.52	
608.00	10.100	140.600	605.43	41.29	-33.81	24.18	2.02	
696.00	10.700	140.600	691.98	57.16	-46.08	34.26	0.68	
786.00	10.400	140.200	780.46	73.62	-58.78	44.76	0.34	
881.00	9.700	138.500	874.01	90.20	-71.36	55.55	0.80	
971.00	10.600	141.300	962.60	106.04	-83.50	65.75	1.14	
1060.00	12.600	136.700	1049.78	123.92	-96.95	77.53	2.47	
1150.00	14.900	133.900	1137.19	145.28	-112.12	92.60	2.66	
1241.00	16.700	133.600	1224.75	169.99	-129.25	110.50	1.98	
1329.00	17.100	135.300	1308.95	195.52	-147.17	128.76	0.72	
1417.00	16.900	135.000	1393.10	221.22	-165.41	146.91	0.25	
1505.00	17.000	133.600	1477.28	246.82	-183.33	165.27	0.48	
1593.00	16.800	132.200	1561.48	272.30	-200.74	184.00	0.52	
1680.00	16.300	135.000	1644.88	297.01	-217.82	201.95	1.08	
1770.00	16.100	137.400	1731.31	322.10	-235.94	219.33	0.78	
1861.00	15.600	136.700	1818.85	346.95	-254.13	236.26	0.59	
1950.00	15.200	139.500	1904.65	370.58	-271.71	252.05	0.95	
2040.00	15.500	139.200	1991.44	394.40	-289.79	267.57	0.34	
2128.00	14.600	137.800	2076.42	417.24	-306.90	282.70	1.10	
2219.00	14.300	137.800	2164.54	439.95	-323.73	297.95	0.33	
2308.00	14.600	137.100	2250.73	462.16	-340.09	312.97	0.39	
2398.00	15.200	134.600	2337.70	485.28	-356.68	329.09	0.98	
2486.00	16.400	134.600	2422.38	509.20	-373.50	346.15	1.36	
2575.00	16.100	140.200	2507.83	534.07	-391.81	363.00	1.79	
2665.00	15.800	135.000	2594.37	558.78	-410.06	379.65	1.62	
2752.00	15.700	133.200	2678.10	582.34	-426.49	396.61	0.57	
2841.00	15.600	138.100	2763.80	606.31	-443.64	413.38	1.49	
2928.00	15.000	126.200	2847.74	629.04	-459.01	430.28	3.67	
3019.00	16.100	123.000	2935.41	652.76	-472.83	450.37	1.53	
3108.00	16.800	127.600	3020.77	677.34	-487.40	470.91	1.66	
3197.00	17.900	132.200	3105.72	703.61	-504.44	491.23	1.97	
3286.00	17.700	138.100	3190.47	730.75	-523.70	510.40	2.04	
3376.00	16.600	140.900	3276.47	757.27	-543.86	527.65	1.53	
3463.00	15.500	141.300	3360.08	781.28	-562.58	542.76	1.27	
3554.00	13.800	145.200	3448.12	804.19	-580.98	556.55	2.16	
3642.00	11.500	144.800	3533.97	823.31	-596.77	567.60	2.62	
3731.00	10.200	143.800	3621.38	839.96	-610.38	577.37	1.48	
3821.00	9.400	142.400	3710.07	855.22	-622.63	586.56	0.93	
3910.00	9.000	146.900	3797.92	869.34	-634.22	594.80	0.92	



Actual Wellpath Report

LEE 17-6 AWP

Page 3 of 5



REFERENCE WELLPATH IDENTIFICATION

Operator	KERR MCGEE OIL & GAS ONSHORE LP	Slot	SLOT#01 LEE 17-6 (646'FNL & 1938'FEL)
Area	COLORADO	Well	LEE 17-6
Field	WELD COUNTY (KERR MCGEE)	Wellbore	LEE 17-6 AWB
Facility	SEC.06-T2N-R65W		

WELLPATH DATA (76 stations)

MD [ft]	Inclination [°]	Azimuth [°]	TVD [ft]	Vert Sect [ft]	North [ft]	East [ft]	DLS [°/100ft]	Comments
4000.00	7.700	149.700	3886.97	882.19	-645.33	601.68	1.51	
4089.00	6.300	160.600	3975.31	892.54	-655.08	606.31	2.16	
4176.00	4.700	152.500	4061.90	900.39	-662.74	609.55	2.04	
4265.00	3.200	151.800	4150.69	906.33	-668.17	612.40	1.69	
4353.00	1.300	178.200	4238.62	909.48	-671.33	613.60	2.40	
4443.00	1.000	170.500	4328.60	910.92	-673.13	613.76	0.37	
4578.00	1.100	169.800	4463.58	913.01	-675.56	614.18	0.07	
4711.00	0.800	159.600	4596.56	914.96	-677.69	614.73	0.26	
4845.00	0.400	158.200	4730.55	916.27	-679.00	615.23	0.30	
4978.00	0.600	240.800	4863.55	916.55	-679.77	614.80	0.51	
5113.00	0.700	234.500	4998.54	916.30	-680.60	613.51	0.09	
5248.00	1.100	249.900	5133.52	915.72	-681.52	611.62	0.34	
5384.00	1.000	245.400	5269.50	914.87	-682.46	609.31	0.10	
5518.00	0.600	197.500	5403.49	914.88	-683.62	608.04	0.56	
5651.00	0.400	212.700	5536.48	915.35	-684.67	607.58	0.18	
5784.00	0.500	137.100	5669.48	916.05	-685.49	607.72	0.42	
5919.00	0.600	113.500	5804.48	917.29	-686.20	608.77	0.18	
6053.00	0.400	57.300	5938.47	918.00	-686.23	609.81	0.38	
6184.00	0.700	43.900	6069.47	918.02	-685.41	610.75	0.25	
6316.00	0.500	27.000	6201.46	917.76	-684.31	611.57	0.20	
6448.00	0.600	37.600	6333.45	917.43	-683.25	612.25	0.11	
6582.00	0.500	44.600	6467.45	917.27	-682.28	613.09	0.09	
6716.00	0.500	66.400	6601.44	917.42	-681.63	614.04	0.14	
6850.00	0.400	104.400	6735.44	918.00	-681.51	615.03	0.23	
6982.00	0.600	152.500	6867.43	919.05	-682.24	615.79	0.34	
7098.00	1.100	196.100	6983.42	920.22	-683.85	615.76	0.68	
7222.00	0.600	165.600	7107.41	921.43	-685.62	615.60	0.53	
7354.00	0.400	76.300	7239.40	922.26	-686.18	616.22	0.54	
7484.00	0.700	74.200	7369.40	922.82	-685.86	617.42	0.23	
7567.00	0.800	78.000	7452.39	923.34	-685.60	618.47	0.13	LAST BHI MWD SURVEYS
7617.00	0.800	78.000	7502.39	923.69	-685.45	619.16	0.00	PROJECTION TO BIT

HOLE & CASING SECTIONS - Ref Wellbore: LEE 17-6 AWB Ref Wellpath: LEE 17-6 AWP

String/Diameter	Start MD [ft]	End MD [ft]	Interval [ft]	Start TVD [ft]	End TVD [ft]	Start N/S [ft]	Start E/W [ft]	End N/S [ft]	End E/W [ft]
12.25in Open Hole	15.00	853.00	838.00	15.00	846.41	0.00	0.00	-67.78	52.41
8.625in Casing Surface	15.00	843.00	828.00	15.00	836.56	0.00	0.00	-66.47	51.28
7.875in Open Hole	853.00	7617.00	6764.00	846.41	7502.39	-67.78	52.41	-685.45	619.16



Actual Wellpath Report

LEE 17-6 AWP

Page 4 of 5



REFERENCE WELLPATH IDENTIFICATION

Operator	KERR MCGEE OIL & GAS ONSHORE LP	Slot	SLOT#01 LEE 17-6 (646'FNL & 1938'FEL)
Area	COLORADO	Well	LEE 17-6
Field	WELD COUNTY (KERR MCGEE)	Wellbore	LEE 17-6 AWB
Facility	SEC.06-T2N-R65W		

TARGETS

Name	MD [ft]	TVD [ft]	North [ft]	East [ft]	Grid East [US ft]	Grid North [US ft]	Latitude	Longitude	Shape
LEE 17-6 LEGAL BOX (337'S,463'N,389'E,411'W OF GEO TARGET)		6000.00	-612.78	621.05	3223110.10	1306226.82	40°10'16.431"N	104°42'05.759"W	square
LEE 17-6 GEO TARGET 50' RADIUS (1320'FNL & 1320'FEL, REV-1)		6000.00	-675.76	610.08	3223099.70	1306163.74	40°10'15.809"N	104°42'05.900"W	circle

WELLPATH COMPOSITION - Ref Wellbore: LEE 17-6 AWB Ref Wellpath: LEE 17-6 AWP

Start MD [ft]	End MD [ft]	Positional Uncertainty Model	Log Name/Comment	Wellbore
15.00	7567.00	NaviTrak (Standard)	BHI MWD SURVEYS <153-7567>	LEE 17-6 AWB
7567.00	7617.00	Blind Drilling (std)	Projection to bit	LEE 17-6 AWB



Actual Wellpath Report

LEE 17-6 AWP

Page 5 of 5



REFERENCE WELLPATH IDENTIFICATION

Operator	KERR MCGEE OIL & GAS ONSHORE LP	Slot	SLOT#01 LEE 17-6 (646'FNL & 1938'FEL)
Area	COLORADO	Well	LEE 17-6
Field	WELD COUNTY (KERR MCGEE)	Wellbore	LEE 17-6 AWB
Facility	SEC.06-T2N-R65W		

WELLPATH COMMENTS

MD [ft]	Inclination [°]	Azimuth [°]	TVD [ft]	Comment
7567.00	0.800	78.000	7452.39	LAST BHI MWD SURVEYS
7617.00	0.800	78.000	7502.39	PROJECTION TO BIT