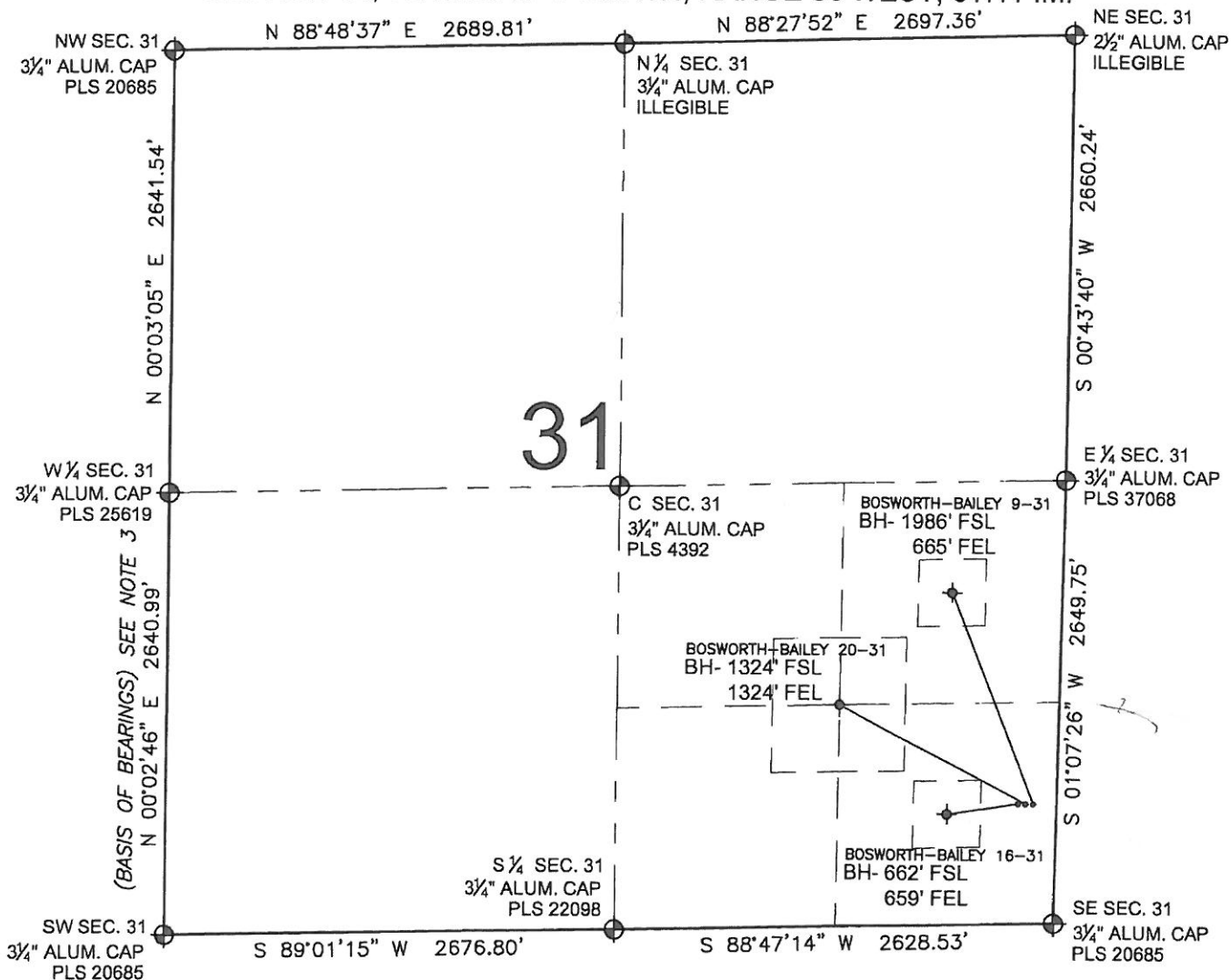


# PAD DRAWING: BOSWORTH-BAILEY 3 PAD

SECTION 31, TOWNSHIP 7 NORTH, RANGE 66 WEST, 6TH P.M.



## NOTES:

1. THIS FIELD SURVEY CONFORMS TO THE MINIMUM STANDARDS SET BY THE C.O.G.C.C., RULE NO. 215
2. HORIZONTAL POSITIONS AND ORTHOMETRIC ELEVATIONS SHOWN AT THE WELL HEAD, ARE BASED ON GPS-RTK POSITIONS DERIVED FROM MINIMUM 2-HOUR STATIC OBSERVATIONS CORRECTED BY THE NATIONAL GEODETIC SURVEY ONLINE POSITIONING USER SERVICE, O.P.U.S. DATUM: HORIZONTAL = NAD83/2007, VERTICAL = NAVD88
3. THE BASIS OF BEARINGS ARE STATE PLANE COORDINATE SYSTEM GRID BEARINGS SHOWN HEREON BETWEEN THE DESCRIBED THE MONUMENTS SHOWN HEREON.
4. GRID DISTANCES ARE SHOWN, AS MEASURED IN THE FIELD, WITH TIES TO WELLS MEASURED PERPENDICULAR TO SECTION LINES.

## LEGEND

- = EXISTING MONUMENT   
 = BOTTOM HOLE   
 BH= BOTTOM HOLE  
 = PROPOSED WELL   
 = EXISTING WELL

## NOTES:

BOSWORTH-BAILEY 9-31 TO BE AT 717' FSL, 173' FEL.  
 BOTTOM HOLE AT 1986' FSL & 665' FEL.  
 BOSWORTH-BAILEY 20-31 TO BE AT 717' FSL, 188' FEL.  
 BOTTOM HOLE AT 1324' FSL & 1324' FEL.  
 BOSWORTH-BAILEY 16-31 TO BE AT 717' FSL, 203' FEL.  
 BOTTOM HOLE AT 662' FSL & 659' FEL.

PREPARED BY:

**PFS**

Petroleum Field Services, LLC  
1801 W. 13th Ave.  
Denver, CO 80204

BAYSWATER EXPLORATION & PRODUCTION, LLC

FIELD DATE:  
06-22-11

DRAWING DATE:  
09-14-11

BY:  
SMF

PAD NAME:  
BOSWORTH-BAILEY 3 PAD

SURFACE LOCATION:

WELD COUNTY, COLORADO  
SE 1/4 SE 1/4, SEC. 31, T7N, R66W, 6TH P.M.



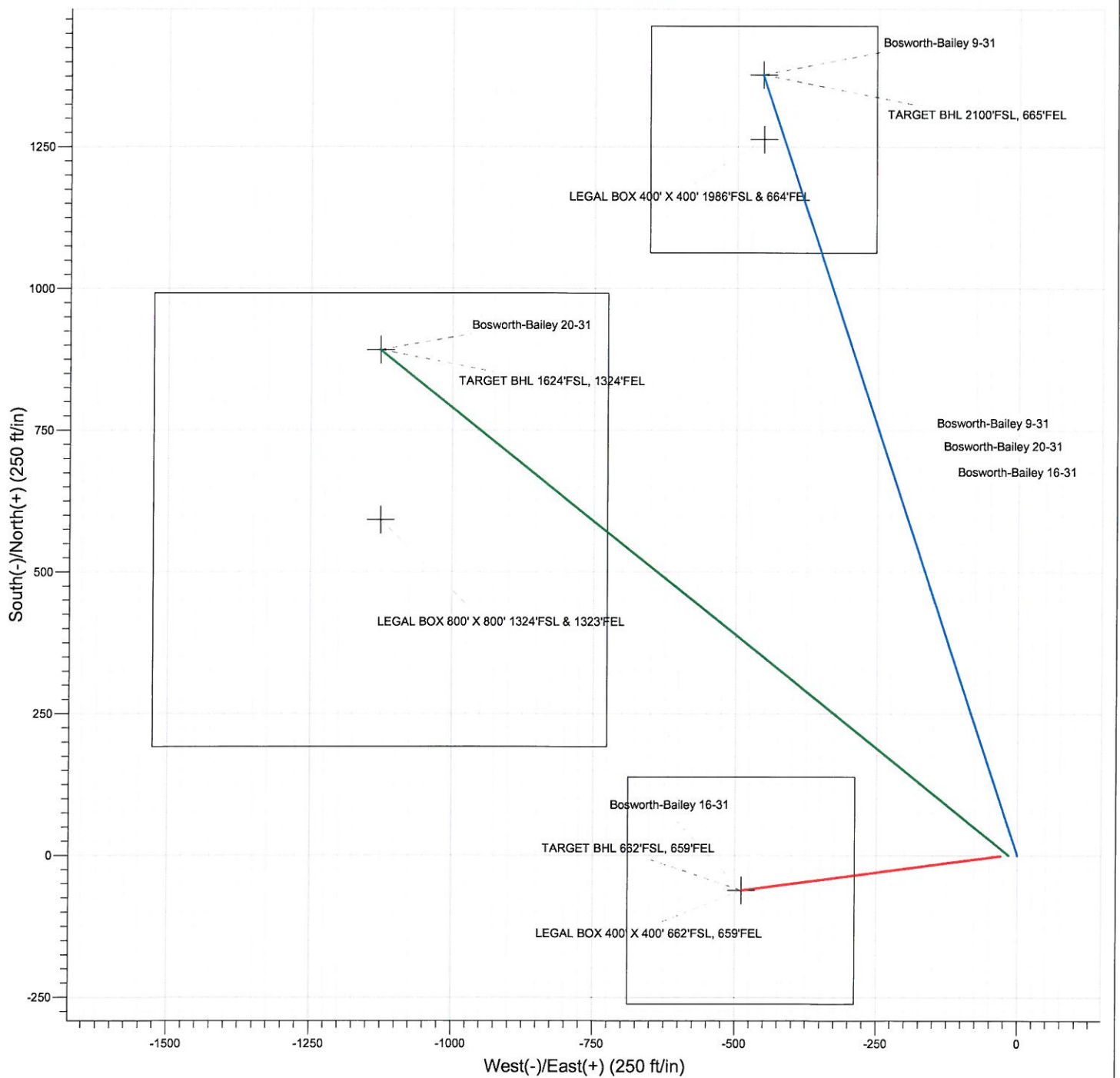
0 500 1000  
SCALE: 1"=1000'

**Surface Location: Bosworth-Bailey 9-31 Pad Sec.31-T7N-R66W**

North American Datum 1983 , US State Plane 1983 , Colorado Northern Zone

Ground Elevation: 4875.0

+N/-S	+E/-W	Northing	Easting	Latitude	Longitude	Slot
0.0	0.0	1435057.26	3190790.05	40.525606	-104.813684	



**ENSIGN**  
**Directional**