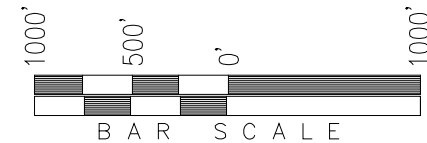


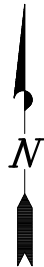
T2S, R97W, 6th P.M.

ExxonMobil Oil Corporation

WELL LOCATION, PICEANCE CREEK UNIT
T78X-12G6, LOCATED AS SHOWN IN SE 1/4 SE
1/4 OF SECTION 12, T2S, R97W, 6th P.M. RIO
BLANCO COUNTY, COLORADO.



◆ = SECTION CORNERS LOCATED



BASIS OF BEARINGS & BASIS OF ELEVATION

BASIS OF BEARINGS IS A LINE BETWEEN MAGNOLIA & MEYERS TRIANGULATION STATION GRID COORDINATES WHICH IS ASSUMED TO BEAR S82°36'07"E.

BASIS OF ELEVATIONS IS MAGNOLIA TRIANGULATION STATION LOCATED IN THE NW 1/4 OF SECTION 9, T2S, R96W, 6th P.M. REPORTED FROM THE NATIONAL GEODETIC SURVEY AS BEING 7529 FEET (NAVD 88). WE MEASURED IT TO BE 7526.2'

NOTES:

1. Well footages are measured at right angles to the Section Lines.
2. Bearings are based on Global Positioning Satellite observations.
3. G.P.S. Operator: Q. MILLER, (PDOP) = 2.2 (06-28-11)

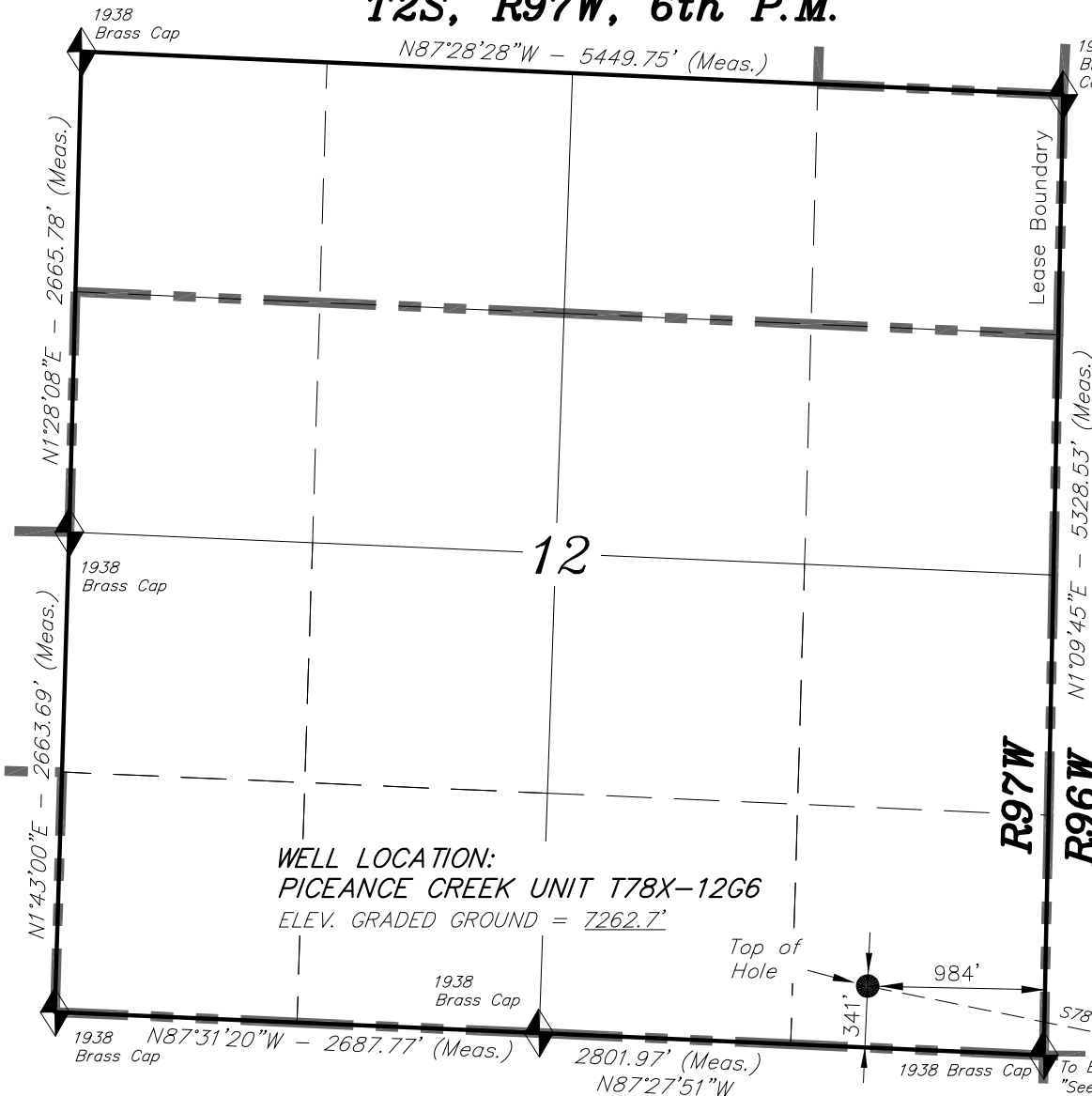
THIS IS TO CERTIFY THAT THE ABOVE PLAT WAS PREPARED FROM FIELD NOTES OF ACTUAL SURVEYS MADE BY ME OR UNDER MY SUPERVISION, THE LOCATION HAS BEEN STAKED ON THE GROUND AS SHOWN ON THE PLAT, AND THAT THE SAME ARE TRUE AND CORRECT TO THE BEST OF MY KNOWLEDGE AND BELIEF.

REGISTERED LAND SURVEYOR
REGISTRATION No. 30125
STATE OF COLORADO
10-27-11
30125

TRI STATE LAND SURVEYING & CONSULTING

180 NORTH VERNAL AVE. - VERNAL, UTAH 84078
(435) 781-2501

DATE SURVEYED: 11-06-09	SURVEYED BY: D.G.	SHEET 1b
DATE DRAWN: 12-01-09	DRAWN BY: L.C.S.	
REVISED: 10-27-11 D.COX	SCALE: 1" = 1000'	



WELL LOCATION:
PICEANCE CREEK UNIT T78X-12G6
ELEV. GRADED GROUND = 7262.7'

CO-NORTH NAD 83 (SURFACE LOCATION)	
LATITUDE = 39°53'06.16" (39.885043)	
LONGITUDE = 108°13'20.13" (108.222257)	
STATE PLANE COORDINATES	
N: = 1212696.490	E: = 2236184.376
CO-NORTH NAD 27 (SURFACE LOCATION)	
LATITUDE = 39°53'06.25" (39.885071)	
LONGITUDE = 108°13'17.82" (108.221617)	
STATE PLANE COORDINATES	
N: = 212697.524	E: = 1236344.235

FROM SURFACE LOCATION TO NEAREST:	
TOWN/COMMUNITY: 19.5 MILES NE TO MEEKER	
UNIT BOUNDARY: ±16,296' SLY TO BOUNDARY	
UNIT BOUNDARY: ±15,450' WLY TO BOUNDARY	
UNIT BOUNDARY: S55°W ±9,381' TO BOUNDARY	
LEASE BOUNDARY: ±341' SLY TO BOUNDARY	
LEASE BOUNDARY: ±984' ELY TO BOUNDARY	
EXISTING WELL: S48°W ±60' TO PCU T78X-12G1	