

213 Cooper Avenue  
Glenwood Springs, CO 81601  
970-364-1991 (phone)  
970-845-9182 (fax)



CACHE CREEK

17M PAD  
GRADING AND  
EROSION & SEDIMENT  
CONTROL PLAN

ISSUED FOR CONSTRUCTION 5/25/10 AS

REVISIONS		
NO.	DESCRIPTION	DATE
1	ISSUED FOR CONSTRUCTION	5/25/10

2		
3		
4		
5		
6		

URS PROJECT NO: 22240346.0030

DRAWN BY: RD

DESIGNED BY: RD

CHECKED BY: RA

DATE CREATED: 08/28/09

PLOT DATE: 8/1/2011

SCALE: AS NOTED

ROAD YEN: V200

SHEET TITLE

EROSION AND SEDIMENT CONTROL PLAN



#### LEGEND

● Sample Point

● Approx. Release Point

**Bold indicates laboratory results exceed COGCC standards**

#### SAMPLE POINT LOCATIONS

9/19/2011

Rulison 17M Pad

Noble Energy, Inc.

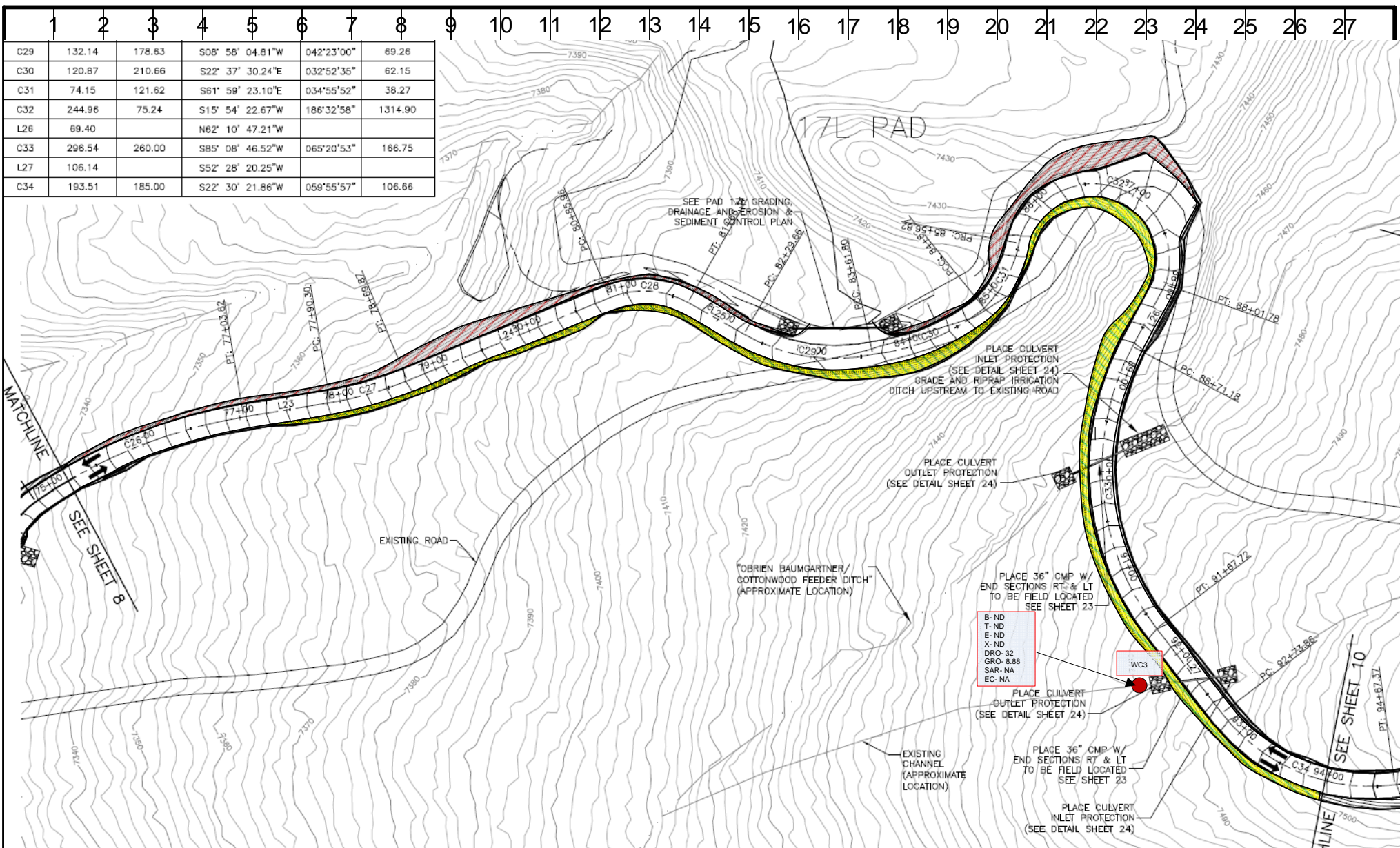
GARFIELD COUNTY, COLORADO

SITE LEGAL LOCATION:  
SECTION 17, TOWNSHIP 7S, RANGE 94W



Not to Scale





#### LEGEND



Sample Point

**Bold indicates laboratory results exceed COGCC standards**

#### SAMPLE POINT LOCATIONS

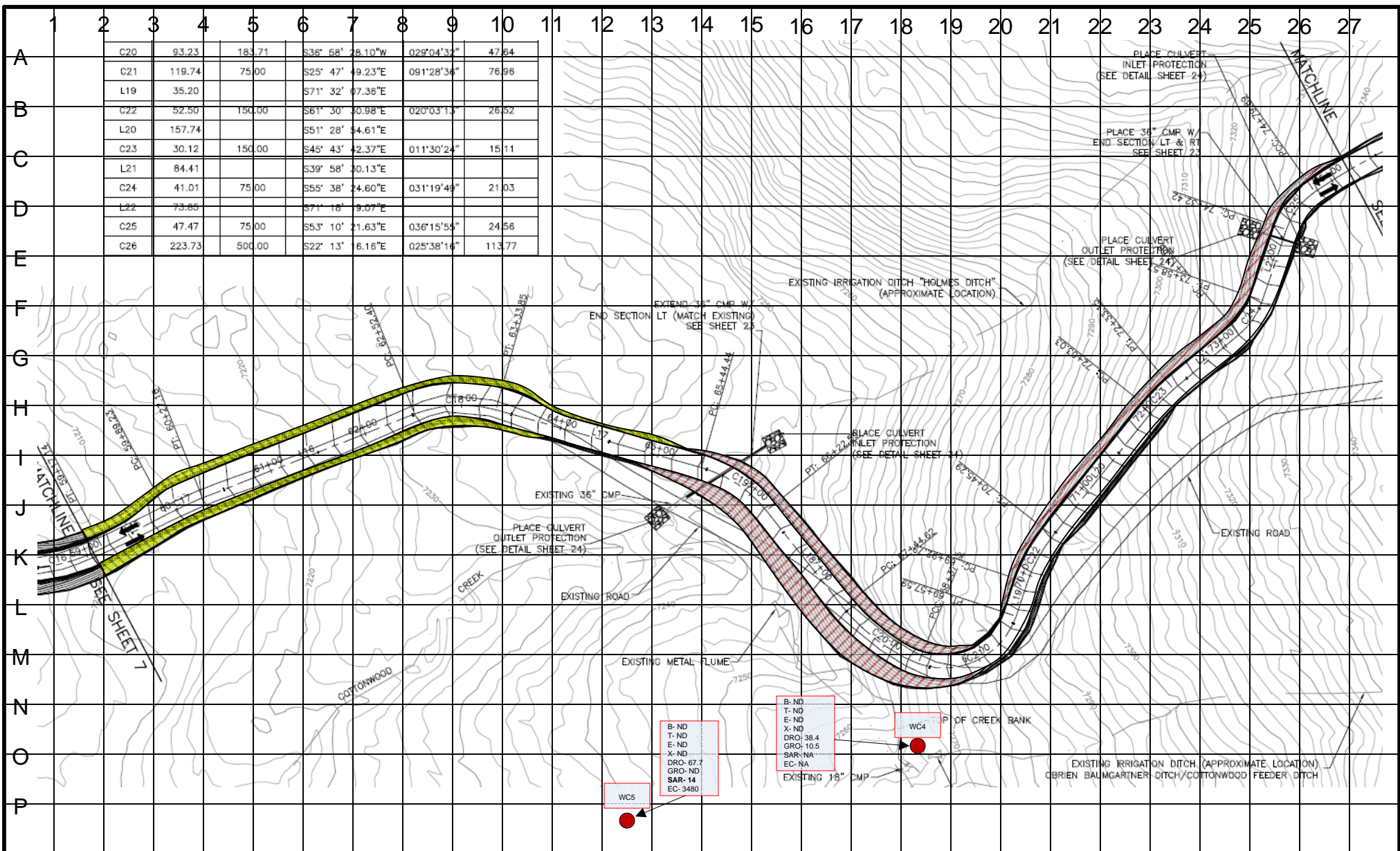
9/19/2011

Rulison 17L & 17M Access Rd – Section 6  
Noble Energy, Inc.  
GARFIELD COUNTY, COLORADO

SITE LEGAL LOCATION:  
SECTION 17, TOWNSHIP 7S, RANGE  
94W



Not to Scale



#### LEGEND



Sample Point

**Bold indicates laboratory results exceed COGCC standards**

Sample point WC5-A at end of visual estimate of release

Sample point DS beyond visual estimate of release

#### SAMPLE PONIT LOCATIONS

9/28/2011

Rulison 17L & 17M Access Rd – Section 5

Noble Energy, Inc.

GARFIELD COUNTY, COLORADO

SITE LEGAL LOCATION:  
SECTION 17, TOWNSHIP 7S, RANGE  
94W



Not to Scale