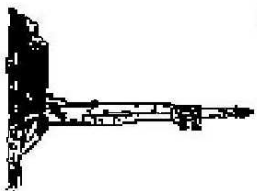


# GOOLSBY BROTHERS and associates, inc.

575 Union Blvd, Suite 208  
Lakewood, CO 80228  
303-945-2860 Office

Geological Wellsite  
Supervision

[www.goolsbybrothers.com](http://www.goolsbybrothers.com)



Scale 1:240 (5"=100') Imperial  
Measured Depth Log

Well Name: Garden Creek 27-36H (Horizontal Hole Section)

Location: Section 36, T11N, R62W, Weld County, CO.

License Number: API: 05-123-32156

Spud Date: October 22, 2010

Surface Coordinates: NWNW Sec 36 T11N R66W, 501 FNL 501 FWL

Lat N 40.884719, Long W -104.275571

Planned SESE Sec 36, T11N, R62W: 600' FSL & 600' FEL

Bottom Hole Coordinates: Lat 40.522397 N, Long 104.153598 W

Ground Elevation (ft): 5106' K.B. Elevation (ft): 5131'

Logged Interval (ft): 6,700' To: 12910' Total Depth (ft): 12910' MTD, iiiii' VS

Formation: Pierre Sands/Shales, Niobrara (Kn), Kn "B" Chalk

Type of Drilling Fluid: Water & Poly to iiiii', LSND iii-iiii', Water w/ Auto Choke iiiiii' MTD

Printed by WellSight Log Manager from WellSight Systems 1-800-447-1534 [www.WellSight.com](http://www.WellSight.com)

## OPERATOR

Company: Energy Opportunity & Growth (EOG)

Address: 600 17th St., Ste. 1000

Denver, CO 80202

Co. Geologist John Melby

## E-logs

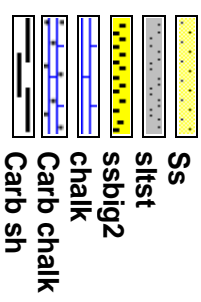
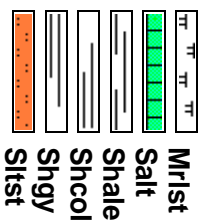
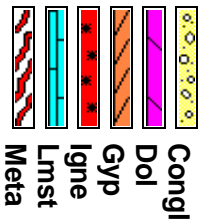
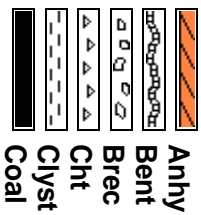
MWD GR 6,700' - 12,910'

## Logs & Casing

9 5/8" Surface Casing set @ 1,142'  
7" Intermediate Casing set @ 7,234'  
4 1/2" Production Liner hung 11/05/10

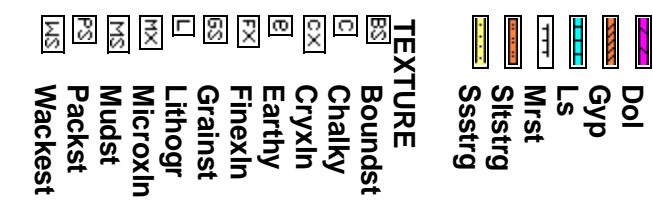
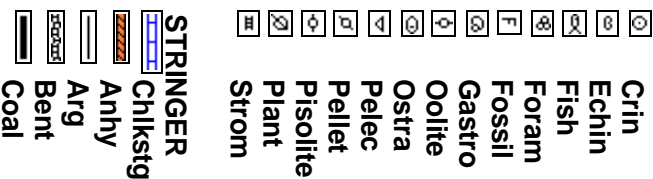
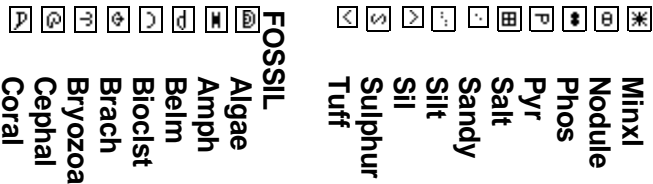
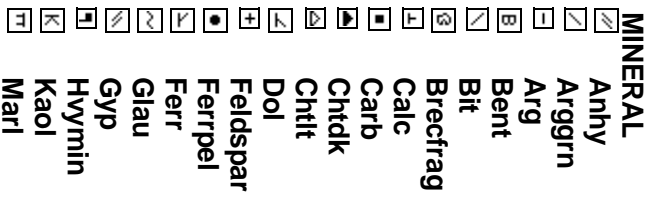
## Comments

- 1) Drilling Contractor: True Drilling, Rig #30  
Toolpushers: JR Kirton
- 2) Company Man: Keith Karow
- 3) Mud Company : Quest Drilling Fluids  
Engineer: Pat Gilliland
- 4) Directional Drilling: Halliburton  
Drillers: Justin Koenen & Mark Price  
MWD: Rodney Stanfield & Jonathan Parrish
- 5) Auto Choke: Weatherford
- 6) Gas Equipment: Mudlogging Systems Inc.  
by Terra Services  
Redbox # ML-198 & Ratcliff Agitator



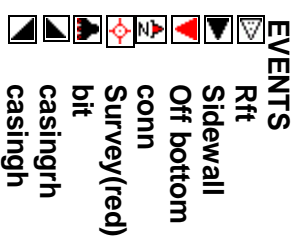
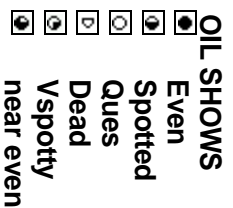
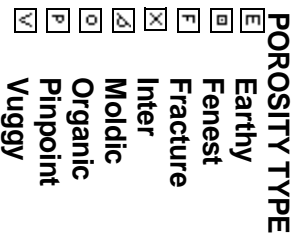
### ROCK TYPES

### ACCESSORIES



### TEXTURE

### OTHER SYMBOLS



### POROSITY TYPE

### SORTING

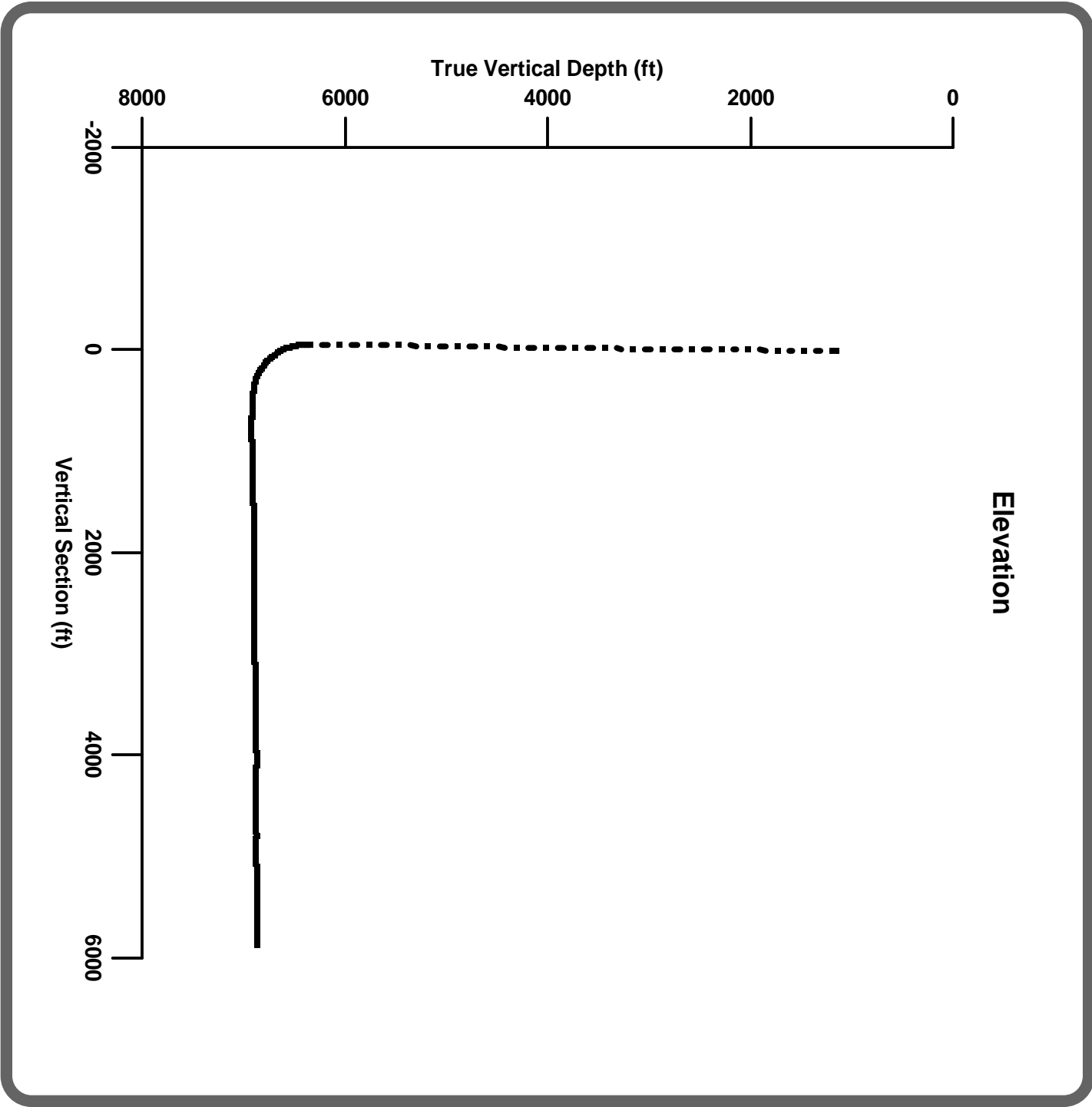
### OIL SHOWS

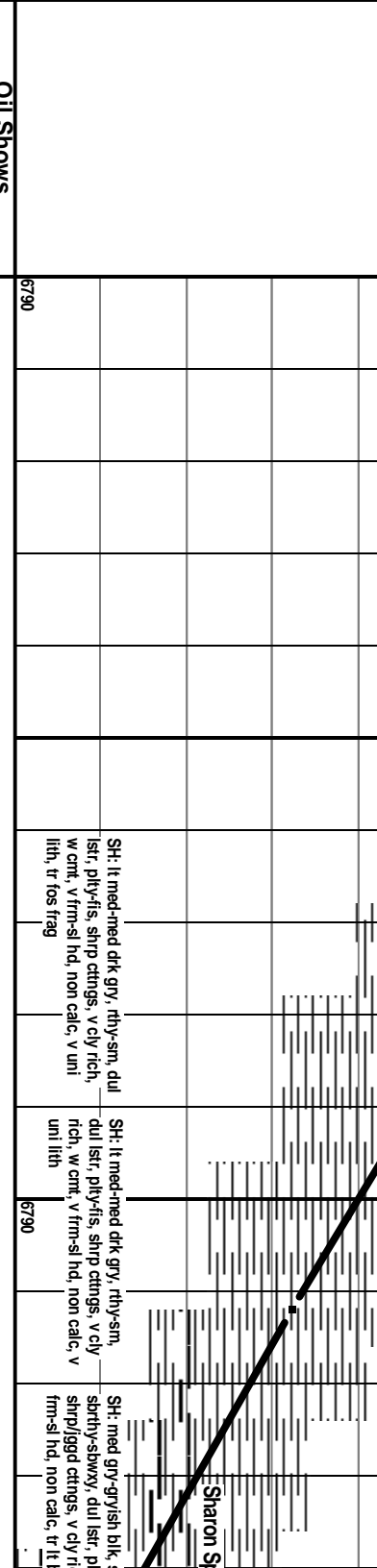
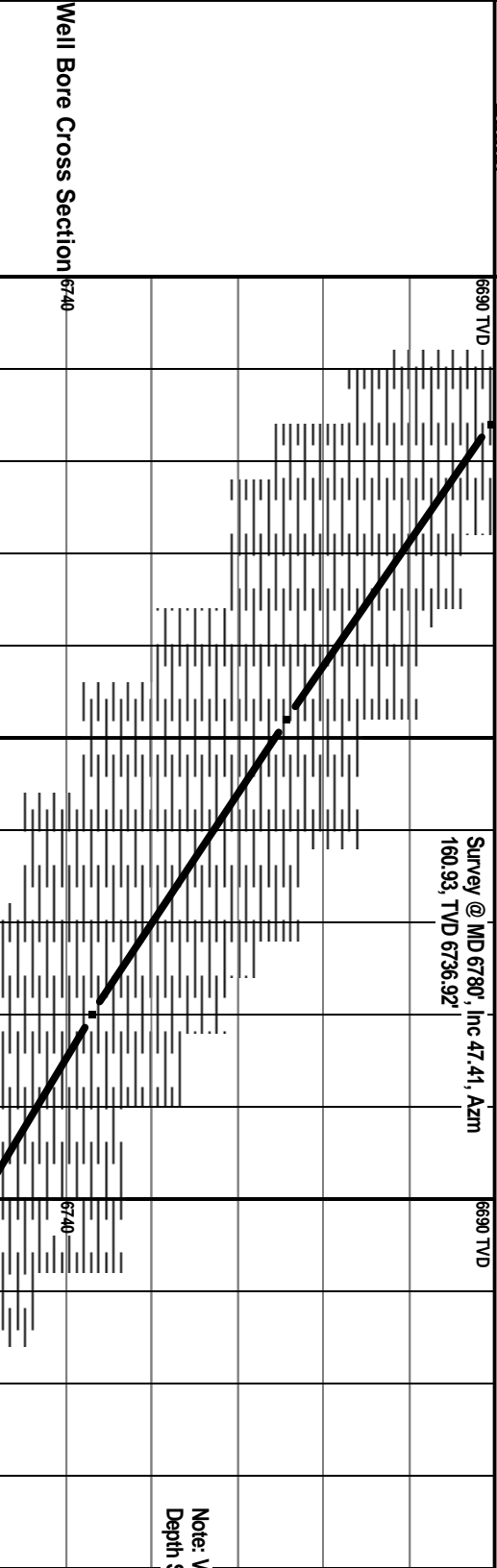
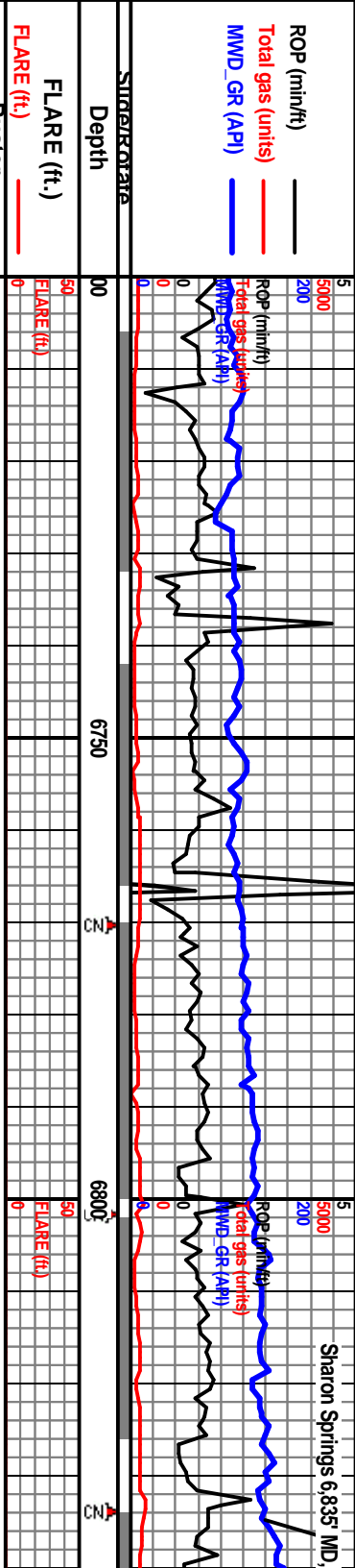
### EVENTS

### INTERVALS

### ROUNDING

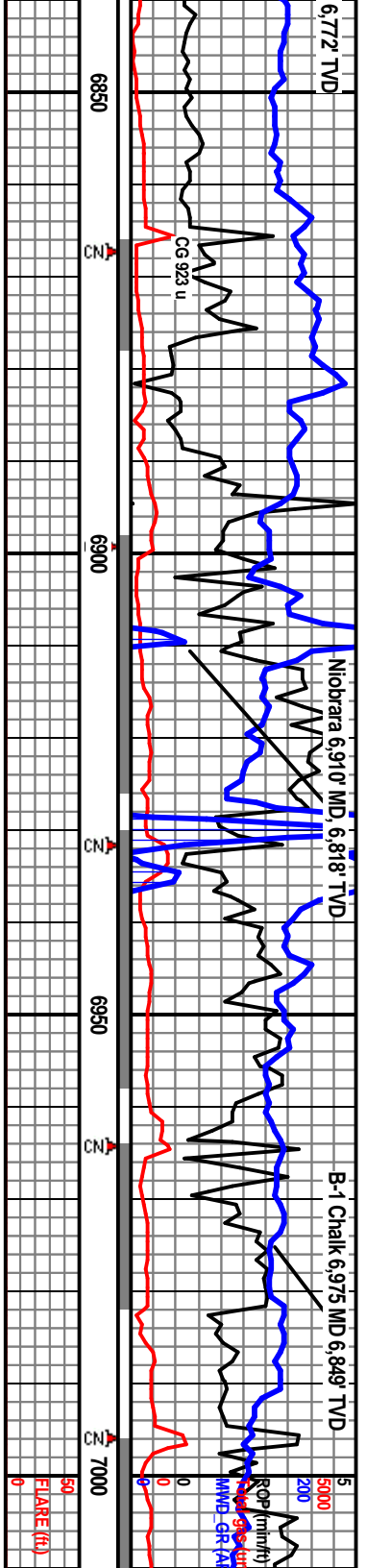




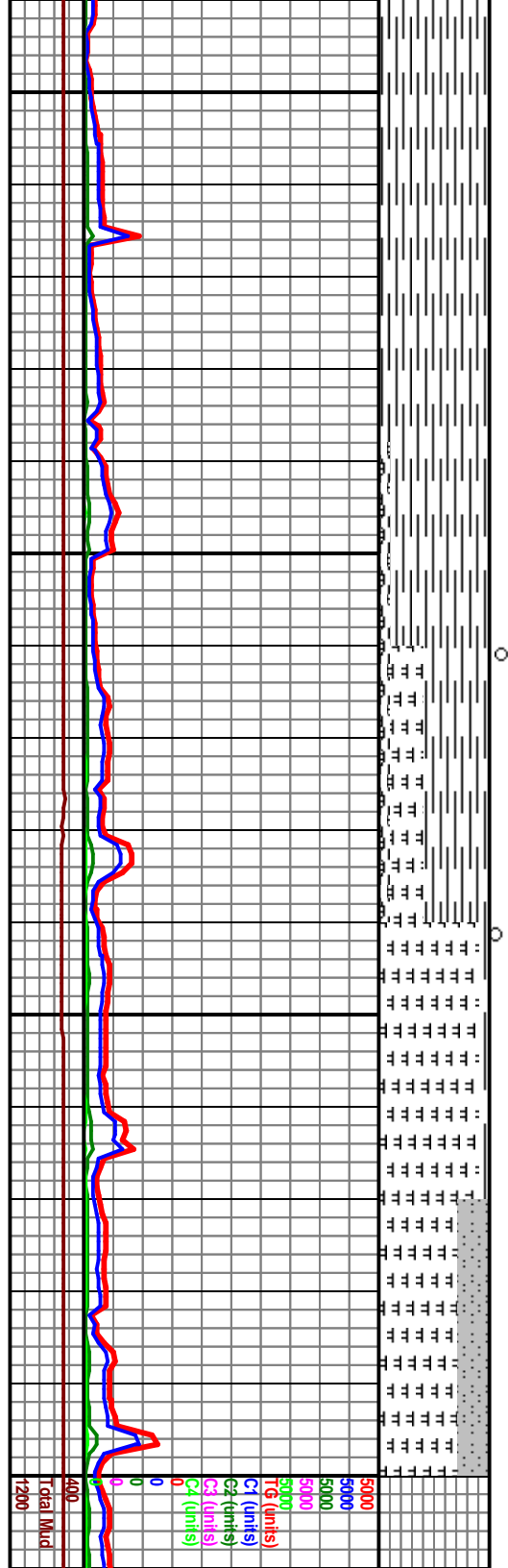


Note: V Depth s

Sharon Sp



6780 TVD	Survey @ MD 6877', Inc 54.32, Azim 160.00, TVD 6796.87'	10/27/10	Survey @ MD 6974', Inc 63.24, Azim 160.31, TVD 6796.87'	6780 TVD	
6830	Scale Change			6830	
6835 MD, 6,772' TVD	SH: med gry-gryish blk, mstly sm-si grty, sbthly, du sbwxy istr, v ply, fis, shrp/ggd, clycarb mx fil, w cnt, sl hd, non calc	MRL V SH: mtld med dk- dk gngy, tr med gy chlk, sm txt, sbthly, sbdthky, mod hd, clycarb mx fil, v calc, no fluor, fr hzy cut	MRL V SBCARB SH: med dk - dk gy, w txt, ply, sb fss, frm, v calc w/ 30-40% micrite, tr dissem mic pyr, tr either diagenetic crn foss cists or diagenetic aragonite of moll frag, sb carb, v calc, no fluor, fst hzy - oldy cut	ARG SLTSTN: med lt gy, sily txt, dull rthy - sl sily istr, blkly, sft, dissem mic mica, 60% arg mx & rest sif, sl tr blk carb stkes, no vis por, NSFOC	6880
6880	SH: med gry-gryish blk, sm, sbthly, du sbwxy istr, v ply, fis & shrp, clycarb mx fil, w cnt, sl hd, non calc				

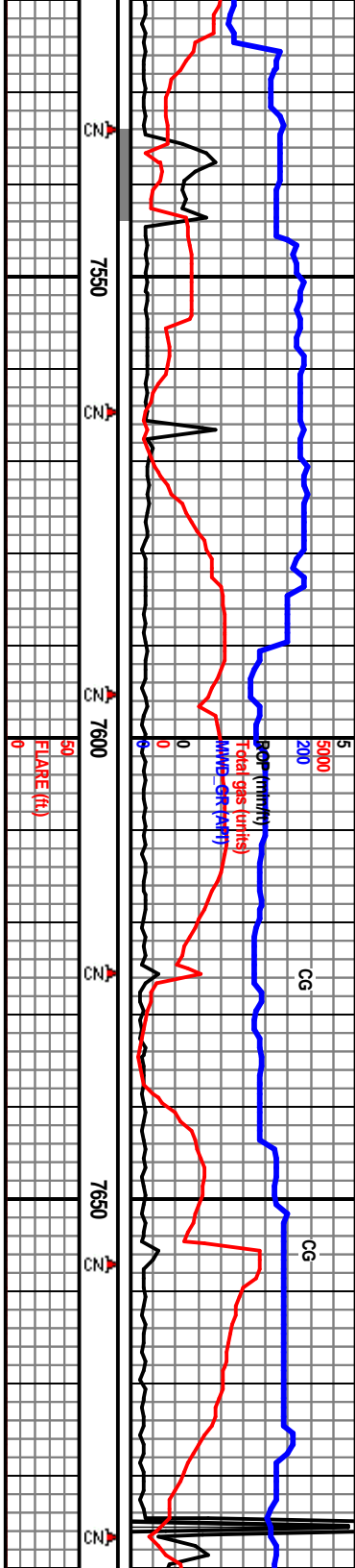


ROP (min/ft)  
 RMT (ft)  
 F1 (ft)  
 F2 (ft)  
 F3 (ft)  
 F4 (ft)  
 F5 (ft)  
 F6 (ft)  
 F7 (ft)  
 F8 (ft)  
 F9 (ft)  
 F10 (ft)  
 F11 (ft)  
 F12 (ft)  
 F13 (ft)  
 F14 (ft)  
 F15 (ft)  
 F16 (ft)  
 F17 (ft)  
 F18 (ft)  
 F19 (ft)  
 F20 (ft)  
 F21 (ft)  
 F22 (ft)  
 F23 (ft)  
 F24 (ft)  
 F25 (ft)  
 F26 (ft)  
 F27 (ft)  
 F28 (ft)  
 F29 (ft)  
 F30 (ft)  
 F31 (ft)  
 F32 (ft)  
 F33 (ft)  
 F34 (ft)  
 F35 (ft)  
 F36 (ft)  
 F37 (ft)  
 F38 (ft)  
 F39 (ft)  
 F40 (ft)  
 F41 (ft)  
 F42 (ft)  
 F43 (ft)  
 F44 (ft)  
 F45 (ft)  
 F46 (ft)  
 F47 (ft)  
 F48 (ft)  
 F49 (ft)  
 F50 (ft)  
 F51 (ft)  
 F52 (ft)  
 F53 (ft)  
 F54 (ft)  
 F55 (ft)  
 F56 (ft)  
 F57 (ft)  
 F58 (ft)  
 F59 (ft)  
 F60 (ft)  
 F61 (ft)  
 F62 (ft)  
 F63 (ft)  
 F64 (ft)  
 F65 (ft)  
 F66 (ft)  
 F67 (ft)  
 F68 (ft)  
 F69 (ft)  
 F70 (ft)  
 F71 (ft)  
 F72 (ft)  
 F73 (ft)  
 F74 (ft)  
 F75 (ft)  
 F76 (ft)  
 F77 (ft)  
 F78 (ft)  
 F79 (ft)  
 F80 (ft)  
 F81 (ft)  
 F82 (ft)  
 F83 (ft)  
 F84 (ft)  
 F85 (ft)  
 F86 (ft)  
 F87 (ft)  
 F88 (ft)  
 F89 (ft)  
 F90 (ft)  
 F91 (ft)  
 F92 (ft)  
 F93 (ft)  
 F94 (ft)  
 F95 (ft)  
 F96 (ft)  
 F97 (ft)  
 F98 (ft)  
 F99 (ft)  
 F100 (ft)

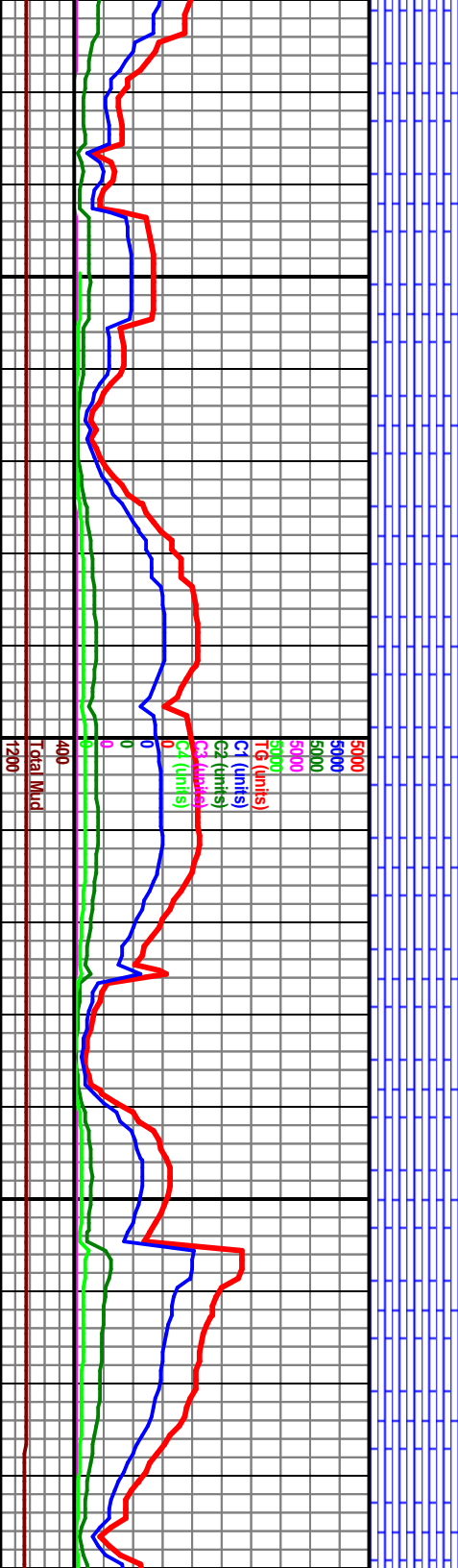








Survey @ MD 7576', Inc 89.75, Azm 158.88, TVD 6919.38"	6880 TVD	Survey @ MD 7667', Inc 92.41, Azm 159.01, TVD 6917.37"
Niobrara "B" Chalk Top		
Niobrara "B" Chalk Bottom		
CARB CHLK: It-med-med gry, v mttid, med tan lith frags, occ grtyy, v chily & sbwxy, sbblky, v hd, blk carb mat fill mx, v pchly fluor, fst cidly yelish grn cuts, gsy odor, drk yel oilly res ring, occ marl frag	CARB CHLK: It-med-med gry, v mttid w/lt crm spcks, occ grtyy ip, mostly chily & sprthy sbblky-spsprthy, sl jggd, hd, r sply-mstly no inh fluor, fst cidly yelish grn cuts, gsy odor, drk yel oilly res ring, no o on shks	CARB CHLK: (mudshn): med gry, si med drk ip, sl mttid, occgrtyy tx, mstly chily, rthy sbblky-spsply, hd, tr dim sprky fluor, mod fst strring yelish grm cuts, gsy odor, drk yel oilly res ring, sl tr o on shks
CARB CHLK: It-med-med gry, v mttid, med tan lith frags, occ grtyy tx, mstly chily & sbwxy, sbblky-spsply, hd, blk carb mat fill mx, v sply dim prt fluor, mod fst yelish grn cuts, gsy odor, drk yel oilly res ring, no o on shks	CARB CHLK: It-med-med gry, v mttid w/lt grytan, occ sbwxy drk gry blk frags, chily, mod hd-hd, micritic, pred dim pchly prt fluor, gd fst strring milky   grnsh cuts, mod oilly odor, no o on shks, tr calcic trac fill	CARB CHLK: It-med-med gry, mttid w med brn tx, mstly chily sbblky, sl jggd sply-dim near cidly yelish grm drk yel oilly res tr o on shks

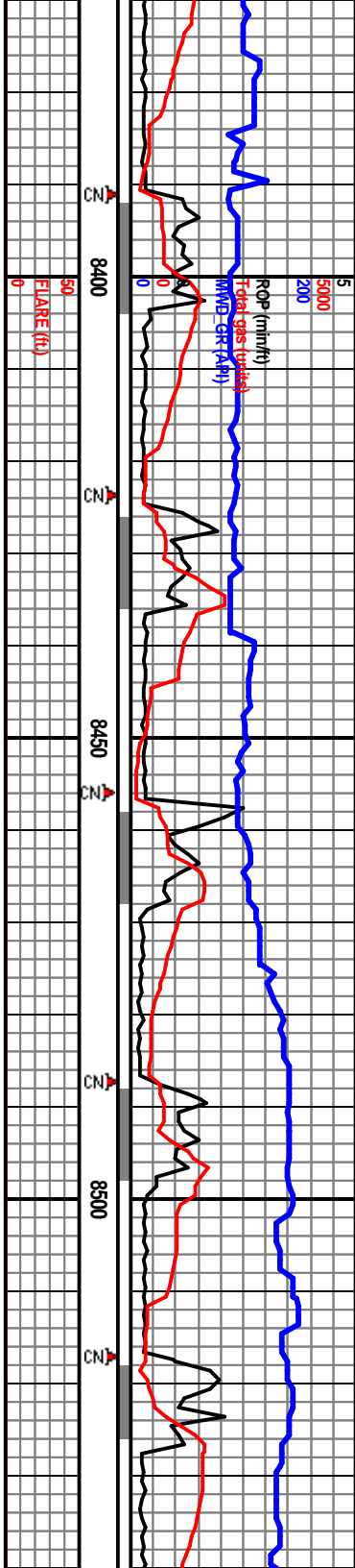




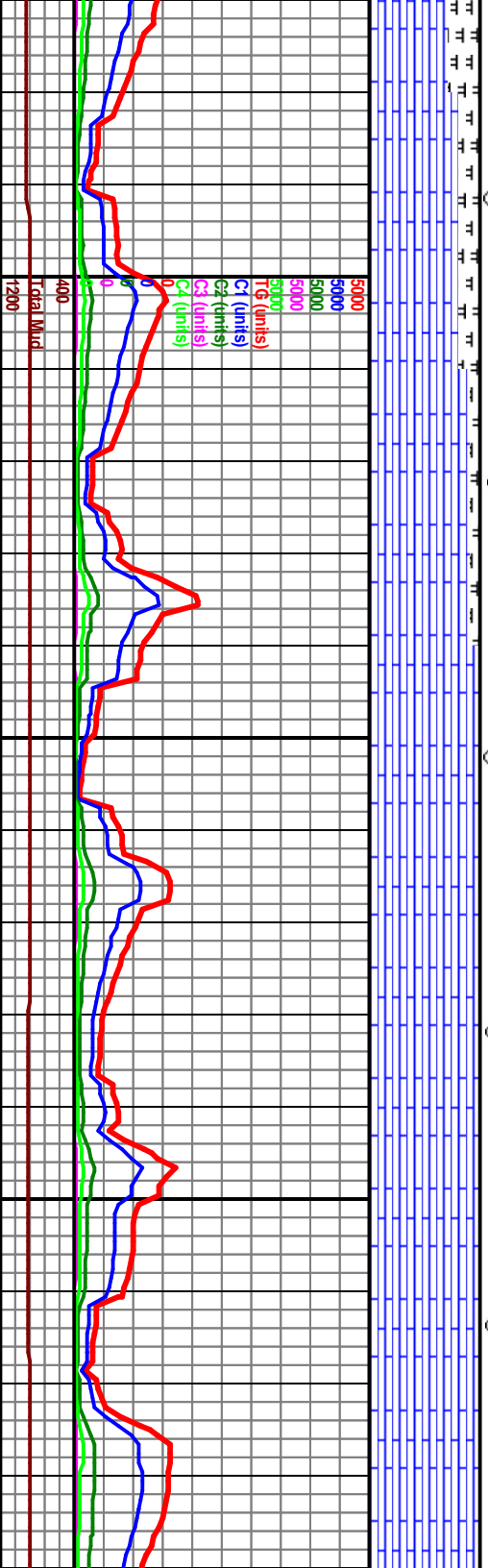








Survey @ MD 8374, Inc 92.42, Azm 154.6, Azm 154.6, VS 1494.31'	Survey @ MD 8438, Inc 89.5, Azm 152.23, TVD 6901.56', VS 1554.65'	Survey @ MID 8500', Inc 90.52, Azm 148.16, TVD 6901.43', VS 1614.27'
Top	WPT 3: Target Window Top 6890' TVD	
Bottom	WPT #: Target Window Bottom 6936' TVD	
Mud Data: 8.402 MW 8.4 Vis 27 PV 1 VP 1 Gel 0.1 / 1 Fil 36 Sol 1% 6936PH 7.5		
CARB CHL.K: dk gy-blk, mot, sl silty, chiky, calc, sbblky-sbply, carb, sl fluor, mod string milky yeilsh cuts, gsy odor, yel oily res ring, 20% dk gy blk marlsn, tr o on shkr	CARB CHL.K: dk gy, mot, sl silty, chiky, sbblky-sbply, calc, frm, gsy, carb, sl fluor, string milky yeilsh cuts, gsy odor, yel oily res ring, 10% dk gy blk marlsn, tr o on shkr	CARB CHL.K: gy-dk gy, mot, sl silty, chiky, sbblky-sbply, calc, frm, rthy, carb filling, sl fluor, wk mlky ly yeilsh cuts, odor, yel oily res ring, tr o on shkr
CARB CHL.K: dk gy, mot, sl silty, chiky, sbblky-sbply, calc, frm, rthy, carb filling, sl fluor, mod string milky yeilsh cuts, gsy odor, yel oily res ring, occ dk gy blk marlsn, tr o on shkr	CARB CHL.K: dk gy, mot, sl silty, chiky, sbblky-sbply, calc, frm, rthy, carb filling, sl fluor, mod string milky yeilsh cuts, gsy odor, yel oily res ring, occ dk gy blk marlsn, tr o on shkr	CARB CHL.K: dk gy, mot, sl silty, chiky, sbblky-sbply, calc, frm, rthy, carb filling, sl fluor, mod string milky yeilsh cuts, gsy odor, yel oily res ring, occ dk gy blk marlsn, tr o on shkr















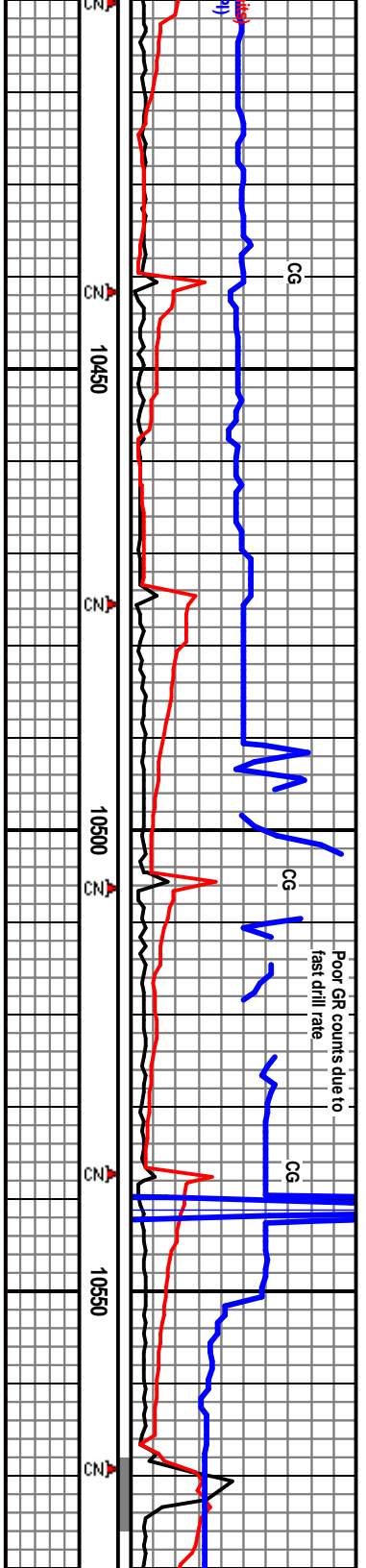












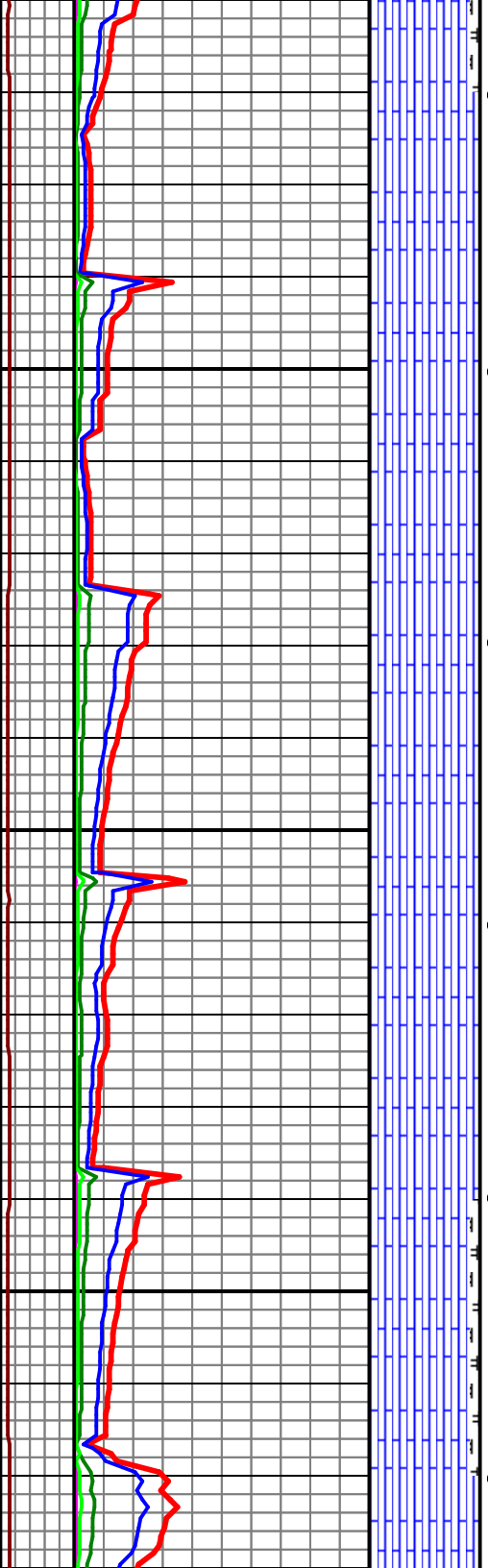
Survey @ MD 10426', Inc 90.34, Azm 119.43, TVD 6882.07', VS 3508.21'

Survey @ MD 10520', Inc 91.77, Azm 119.44, TVD 6890.39', VS 3599.30'

11/02/10

Target Window Top 6870' TVD  
 Target Window Bottom 6876' TVD

CHLK (95%); lk med gry, ip, v mttid, r grty txt, chiky, strthy, sbilly-sply, mud spid mxx, tr shell frag, no fluor, r spity ip, mod fst g yeish gm cuts, mod gsy fnt grnsh yel res cid, no o on shkrs	CARB CHLK: lk med-med gry, med gry/bn ip, mttid w tr tan mic spcks, pred chily & strthy, v sl grty, sbilly, occ sbply, hd, v calc, no ini fluor, fr hzy yel cuts, lk o res cid, sl gsy odor, no o on shkrs	CARB CHLK: lk med gry, sl gry/bn ip, v mttid w tr grykan spcks, occ shwy, chily, strthy, mod hd-hd, mchitic cnt, pred no pri fluor, ffly fst mlky grnsh cuts, sl oily odor, no o on shkrs	CARB CHLK: lk med gry, med gry/bn ip, v mttid, r grty txt, msly chiky, r sbthy, sbilly-sply, hd, mud spid mxx, tr los frags, pred no fluor, r spity ip, mod fst strmg yeish gm cuts, mod gsy odor, fnt grnsh yel res cid, no o on shkrs	CARB CHLK: lk med-med gry, med gry/bn ip, mttid w tr tan mic spcks, pred chily & strthy, v sl grty, sbilly, occ sbply, hd, v calc, no ini fluor, fr hzy yel cuts, lk o res cid, sl gsy odor, no o on shkrs	CARB CHLK (90%): lk med-med gry, med gry/bn ip, mttid w tr tan mic spcks, pred chiky & strthy, v sl grty, sbilly, occ sbply, frm-sl hd, v calc, tr main, no ini fluor, fr hzy yel cuts, lk o res cid, sl gsy odor, no o on shkrs
---	--	---	---	--	--



















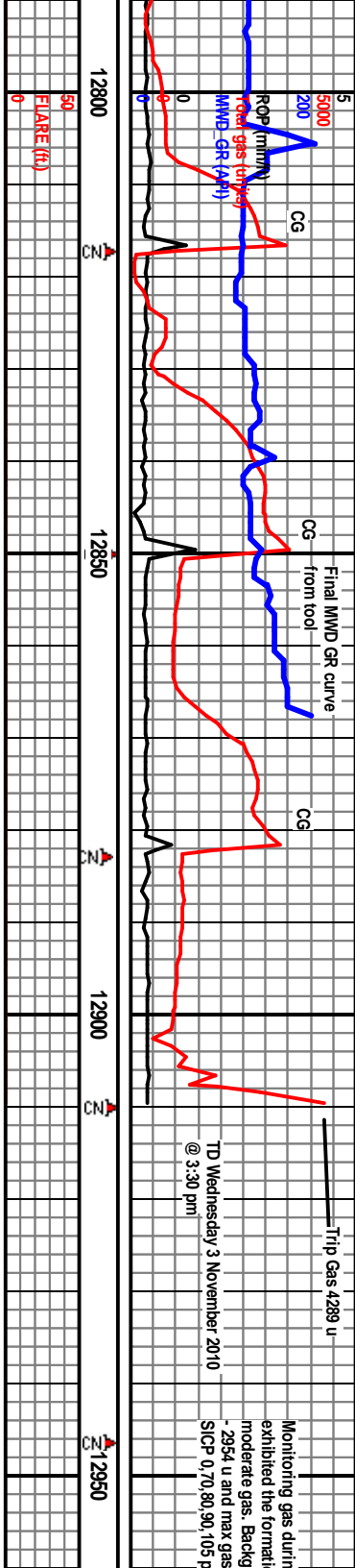




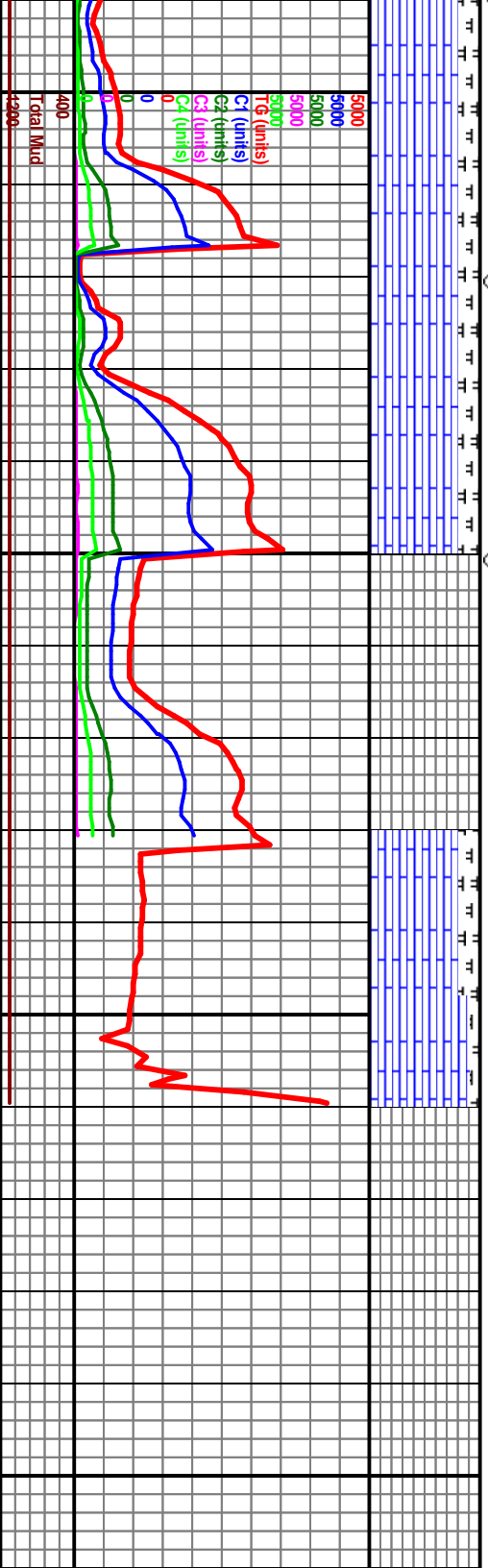








6820 TVD	Survey @ 12861', Inc 92.35, Azm 120.78, TVD 6858.23', VS 5862.97'	TD Wednesday 3 November 2010 @ 3:30 pm	DS projected to bit N 1120.78, TVD 6856' V
6870	WPT 9: Target Window Top 6857'	WPT 9: Target Window Top 6857'	DMTD 12910', Short Trip, wash tight spots 10,158', no returns on bottom, got partial returns before TOH to PU reaming assembly, ####reaming runs, Top Kill w/ #12 MW, displace below w/ packer fluid, stand back DP, hang 4 1/2" production line w/ swell packers and sleeves, OB #3 drld 5676' in 96.5 hrs
6920	WPT 9: Target Window Btm 6863'	WPT 9: Target Window Btm 6863'	Formation Top Picks by Phillip Willcox Wellsite Geologist, Geol/sby Brothers
5000	80%/CARB CHL.K: dk gy-blk, sb blk, carb, mot, v calc, rthy, frm, sl-n fluor, slw wk strm mlky yeish cut, sl-frnt brnsh res mg, sl-no gsy odor, n o on shkrs, 20%/MRLST: blk, silty, sb ply, frm	80%/CARB CHL.K: dk gy-blk, sb blk, carb, mot, v calc, rthy, frm, sl-n fluor, slw wk strm mlky yeish cut, sl-frnt brnsh res mg, sl-no gsy odor, n o on shkrs, 20%/MRLST: blk, silty, sb ply, frm	MD TVD SSS
5000	80%/CARB CHL.K: dk gy-blk, sb blk, carb, mot, v calc, rthy, frm, sl-n fluor, slw wk strm mlky yeish cut, sl-frnt brnsh res mg, sl-no gsy odor, n o on shkrs, 20%/MRLST: blk, silty, sb ply, frm	No Smpl	
5000	75%/CARB CHL.K: dk gy-blk, sb blk, carb, mot, v calc, rthy, frm, sl-n fluor, slw wk strm mlky yeish cut, sl-frnt brnsh res mg, sl-no gsy odor, n o on shkrs, 25%/MRLST: blk, silty, sb ply, frm	BTM up smpl	
5000	HYGIENE KOP SHARON SPRINGS NICORARA "B" Chalk Target Top DMTD	1.118' 1.118' +1024' 6.398' 6.398' 6.772' 6.772' -1.681' 6.818' 6.818' -1.687' 6.904' 6.904' -1.773' 12910' 6.856' VS 5.910'	



Geologist released  
10/16/10

g rearing run  
on producing  
round gas at 554  
5398 u with  
st

13

ID 12910', Inc 92.35, Azim  
S 5910'

Thank you for using Goodsy Bro. &  
Associates:

Phillip Wilcox  
Larry Goodsy  
Jack Rogers