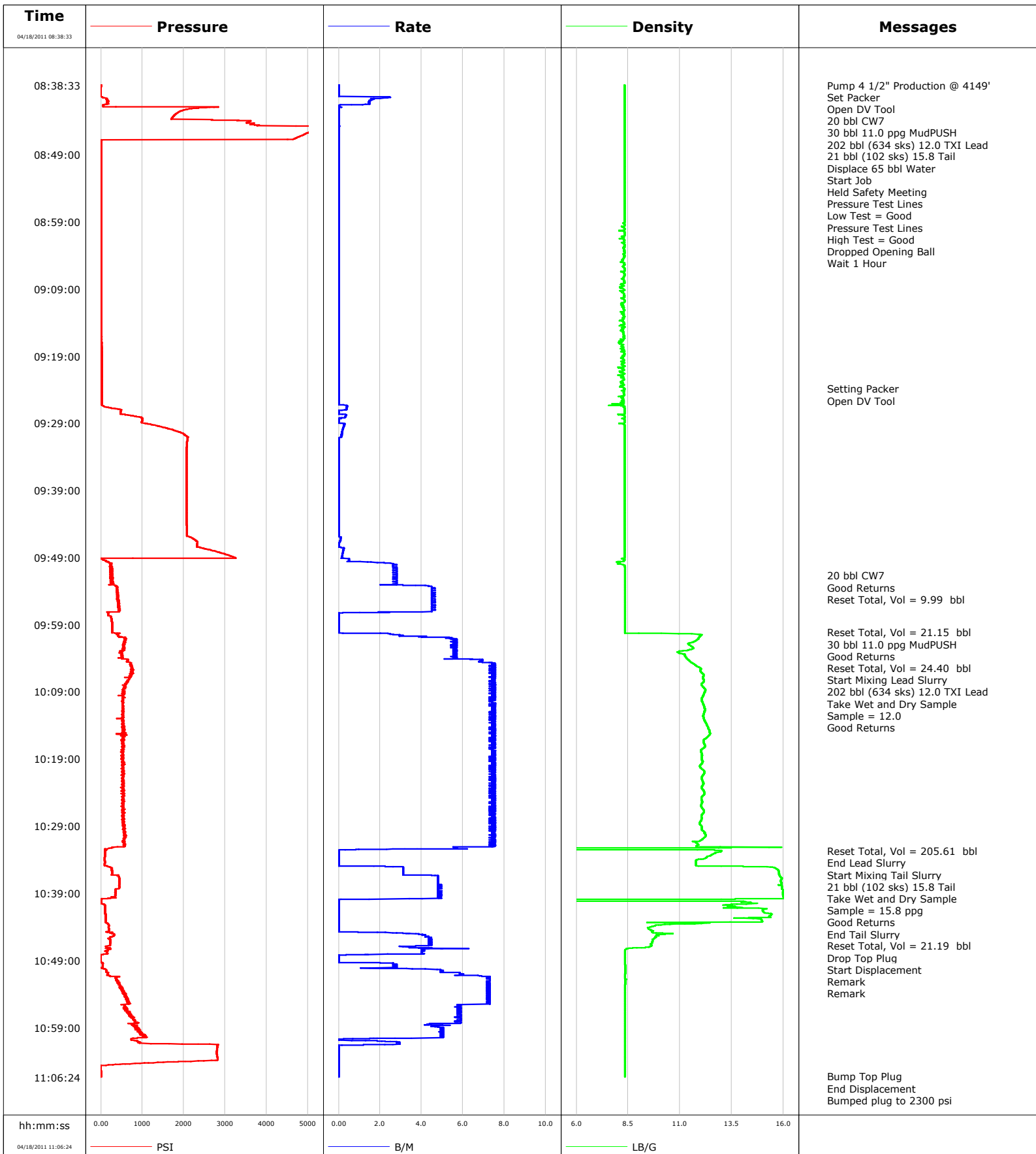


Well	MF05A-16	Client	Encana
Field	N Parachute	SIR No.	
Engineer	Tom Leduc	Job Type	4 1/2" Production
Country	United States	Job Date	04-18-2011



Well			Field	Job Start	Customer	Job Number
MF05A-16 MF05A-16			N Parachute	Apr/18/2011	Encana	BAD4-00620
Date	Time 24-hr clock	Treating Pressure PSI	Flow Rate B/M	Density LB/G	Volume BBL	Message
04/18/2011	08:38:53					High Test = Good
04/18/2011	08:38:53	-1	0.0	8.33	0.0	
04/18/2011	08:38:55					Dropped Opening Ball
04/18/2011	08:38:55					Wait 1 Hour
04/18/2011	08:38:55	-1	0.0	8.33	0.0	
04/18/2011	08:40:03	-2	0.0	8.33	0.0	
04/18/2011	08:42:33	1904	0.0	8.33	2.0	
04/18/2011	08:45:03	5260	0.0	8.33	2.0	
04/18/2011	08:47:33	3	0.0	8.33	2.0	
04/18/2011	08:50:03	3	0.0	8.33	2.0	
04/18/2011	08:52:33	5	0.0	8.33	2.0	
04/18/2011	08:55:03	5	0.0	8.33	2.0	
04/18/2011	08:57:33	5	0.0	8.33	2.0	
04/18/2011	09:00:03	6	0.0	8.31	2.0	
04/18/2011	09:02:33	7	0.0	8.32	2.0	
04/18/2011	09:05:03	8	0.0	8.29	2.0	
04/18/2011	09:07:33	8	0.0	8.27	2.0	
04/18/2011	09:10:03	10	0.0	8.30	2.0	
04/18/2011	09:12:33	10	0.0	8.29	2.0	
04/18/2011	09:15:03	11	0.0	8.21	2.0	
04/18/2011	09:17:33	12	0.0	8.21	2.0	
04/18/2011	09:20:03	13	0.0	8.31	2.0	
04/18/2011	09:22:33	14	0.0	8.30	2.0	
04/18/2011	09:23:48					Setting Packer
04/18/2011	09:23:48	15	0.0	8.31	2.0	
04/18/2011	09:24:08					Open DV Tool
04/18/2011	09:24:08	15	0.0	8.26	2.0	
04/18/2011	09:25:03	15	0.0	8.19	2.0	
04/18/2011	09:27:33	472	0.0	8.32	2.3	
04/18/2011	09:30:03	1770	0.2	8.32	2.8	
04/18/2011	09:32:33	2072	0.0	8.32	2.9	
04/18/2011	09:35:03	2061	0.0	8.32	2.9	
04/18/2011	09:37:33	2062	0.0	8.32	2.9	
04/18/2011	09:40:03	2065	0.0	8.32	2.9	
04/18/2011	09:42:33	2069	0.0	8.32	2.9	
04/18/2011	09:45:03	2073	0.0	8.32	2.9	
04/18/2011	09:47:33	2424	0.3	8.33	3.0	
04/18/2011	09:50:03	252	2.6	8.26	4.5	
04/18/2011	09:51:41					20 bbl CW7
04/18/2011	09:51:41	261	2.8	8.34	9.0	
04/18/2011	09:51:51					Good Returns
04/18/2011	09:51:51	226	2.8	8.34	9.5	
04/18/2011	09:52:02					Reset Total, Vol = 9.99 bbl
04/18/2011	09:52:02	286	2.8	8.34	10.0	
04/18/2011	09:52:33	270	2.8	8.34	11.4	
04/18/2011	09:55:03	390	4.5	8.34	21.6	
04/18/2011	09:57:33	175	0.0	8.34	31.1	
04/18/2011	10:00:03	269	0.0	8.34	31.1	
04/18/2011	10:00:06					Reset Total, Vol = 21.15 bbl
04/18/2011	10:00:06	269	0.0	8.34	31.1	
04/18/2011	10:00:07					30 bbl 11.0 ppg MudPUSH
04/18/2011	10:00:07					Good Returns
04/18/2011	10:00:07	270	0.0	8.34	31.1	
04/18/2011	10:02:33	543	5.5	11.65	42.2	

Well		Field		Job Start		Customer		Job Number	
MF05A-16 MF05A-16		N Parachute		Apr/18/2011		Encana		BAD4-00620	
Date	Time 24-hr clock	Treating Pressure PSI	Flow Rate B/M	Density LB/G	Volume BBL	Message			
04/18/2011	10:04:46	721	7.4	11.64	55.5				
04/18/2011	10:04:49					Start Mixing Lead Slurry			
04/18/2011	10:04:49	715	7.6	11.65	55.9				
04/18/2011	10:04:50					202 bbl (634 sks) 12.0 TXI Lead			
04/18/2011	10:04:50	715	7.4	11.65	56.0				
04/18/2011	10:04:51					Take Wet and Dry Sample			
04/18/2011	10:04:51					Sample = 12.0			
04/18/2011	10:04:51					Good Returns			
04/18/2011	10:04:51	705	7.4	11.67	56.2				
04/18/2011	10:05:03	736	7.6	11.77	57.6				
04/18/2011	10:07:33	617	7.6	12.14	76.3				
04/18/2011	10:10:03	517	7.4	12.05	94.9				
04/18/2011	10:12:33	529	7.6	12.12	113.5				
04/18/2011	10:15:03	523	7.3	12.43	132.1				
04/18/2011	10:17:33	527	7.3	12.07	150.8				
04/18/2011	10:20:03	502	7.6	11.95	169.4				
04/18/2011	10:22:33	547	7.4	12.12	188.0				
04/18/2011	10:25:03	540	7.4	12.04	206.7				
04/18/2011	10:27:33	508	7.4	12.04	225.3				
04/18/2011	10:30:03	566	7.4	12.18	243.9				
04/18/2011	10:32:33	98	0.3	11.85	261.1				
04/18/2011	10:32:43					Reset Total, Vol = 205.61 bbl			
04/18/2011	10:32:43	98	0.0	13.01	261.1				
04/18/2011	10:32:44					End Lead Slurry			
04/18/2011	10:32:44	96	0.0	13.00	261.1				
04/18/2011	10:32:45					Start Mixing Tail Slurry			
04/18/2011	10:32:45	96	0.0	13.00	261.1				
04/18/2011	10:32:48					21 bbl (102 sks) 15.8 Tail			
04/18/2011	10:32:48					Take Wet and Dry Sample			
04/18/2011	10:32:48					Sample = 15.8 ppg			
04/18/2011	10:32:48					Good Returns			
04/18/2011	10:32:48	97	0.0	12.99	261.1				
04/18/2011	10:35:03	173	2.6	14.85	261.3				
04/18/2011	10:37:33	445	4.8	15.89	271.1				
04/18/2011	10:39:55					End Tail Slurry			
04/18/2011	10:39:55	12	0.1	12.99	282.3				
04/18/2011	10:39:56					Reset Total, Vol = 21.19 bbl			
04/18/2011	10:39:56	11	0.1	-3.11	282.3				
04/18/2011	10:39:57					Drop Top Plug			
04/18/2011	10:39:57					Start Displacement			
04/18/2011	10:39:57	11	0.0	-3.11	282.3				
04/18/2011	10:39:59					Remark			
04/18/2011	10:39:59					Remark			
04/18/2011	10:39:59	9	0.0	-3.12	282.3				
04/18/2011	10:40:03	8	0.0	-3.13	282.3				
04/18/2011	10:42:33	114	0.0	15.31	282.3				
04/18/2011	10:45:03	279	3.7	10.68	283.0				
04/18/2011	10:47:33	158	4.1	8.35	293.5				
04/18/2011	10:50:03	42	2.8	8.36	297.7				
04/18/2011	10:52:33	429	7.3	8.36	312.8				
04/18/2011	10:55:03	656	7.3	8.35	330.9				
04/18/2011	10:57:33	754	5.6	8.35	346.3				
04/18/2011	11:00:03	958	5.1	8.35	359.3				
04/18/2011	11:02:33	2798	0.0	8.35	363.8				

Well		Field		Job Start		Customer		Job Number	
MF05A-16 MF05A-16		N Parachute		Apr/18/2011		Encana		BAD4-00620	
Date	Time 24-hr clock	Treating Pressure PSI	Flow Rate B/M	Density LB/G	Volume BBL	Message			
04/18/2011	11:06:16					Bump Top Plug			
04/18/2011	11:06:16	0	0.0	8.35	363.8				
04/18/2011	11:06:17					End Displacement			
04/18/2011	11:06:17	0	0.0	8.35	363.8				
04/18/2011	11:06:18					Bumped plug to 2300 psi			
04/18/2011	11:06:18	0	0.0	8.35	363.8				
04/18/2011	11:06:19					Bled off Pressure			
04/18/2011	11:06:19					Floats Held			
04/18/2011	11:06:19	1	0.0	8.35	363.8				

Post Job Summary

Average Pump Rates, bbl/min				Volume of Fluid Injected, bbl			
Slurry	N2	Mud	Maximum Rate	Total Slurry	Mud	Spacer	N2
5.2		0.0	7.6	363.8	0.0	55.8	
Treating Pressure Summary, psi				Breakdown Fluid			
Maximum	Final	Average	Bump Plug to	Breakdown	Type	Volume	Density
5437	1	700	2100		FreshWater	357.0 bbl	8.34 lb/gal
Avg. N2 Percent	Designed Slurry Volume		Displacement	Mix Water Temp	Cement Circulated to Surface?	Volume	
	223.0 bbl		81.5 bbl	60 degF	<input type="checkbox"/>		
Customer or Authorized Representative				Schlumberger Supervisor		Circulation Lost	Job Completed
Floyd Roberts				Tom Leduc		<input type="checkbox"/>	<input checked="" type="checkbox"/>
						-	-