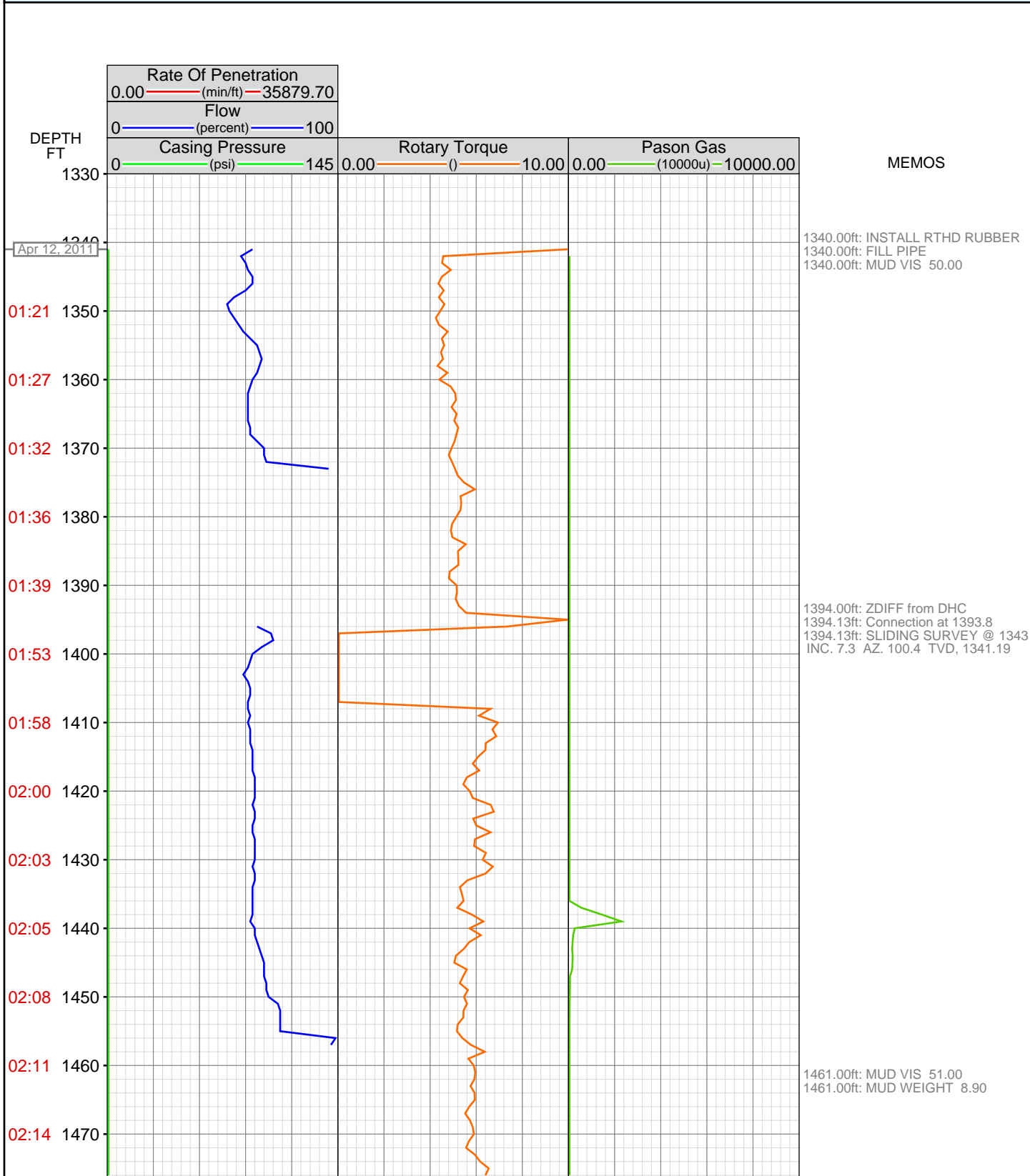


DataHub EDR Log

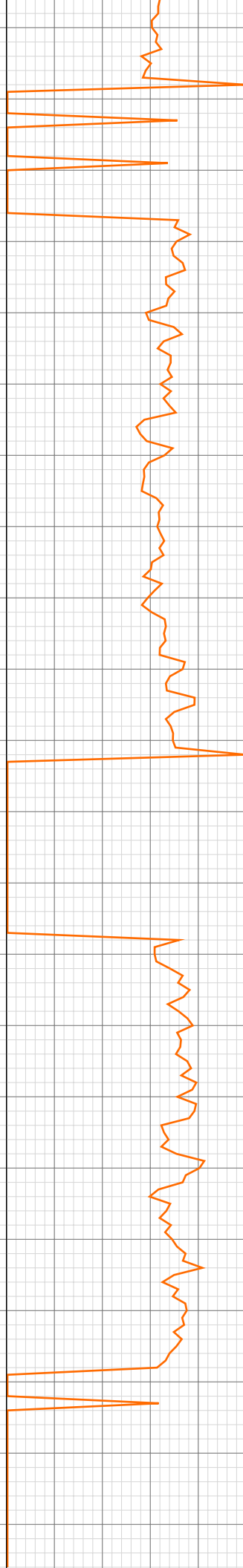
Mon Apr 18, 2011 08:46:15
Well Dossier 1302528423
Marilyn Tucker

OPERATOR: EnCana Oil & Gas (USA), Inc.
WELL: NPMF 05A-16 H17 696
FIELD:
LOCATION: QTRQTR:SENE SEC:17 TWP:6S RNG:96W R1E15S D0
COUNTRY: USA
RIG: Pat-UTI 303

CONTRACTOR: Patterson-UTI Drilling Company
UNIQUE WELL ID: 05 045 18698 01
SPUD DATE: Apr 12, 2011 01:00
RELEASE DATE:



02:17 1480
02:28 1490
02:32 1500
02:35 1510
02:37 1520
02:40 1530
02:42 1540
02:44 1550
02:46 1560
02:48 1570
02:51 1580
03:06 1590
03:09 1600
03:12 1610
03:14 1620
03:16 1630
03:19 1640
03:21 1650
03:23 1660
03:33 1670
03:37 1680
03:40 1690

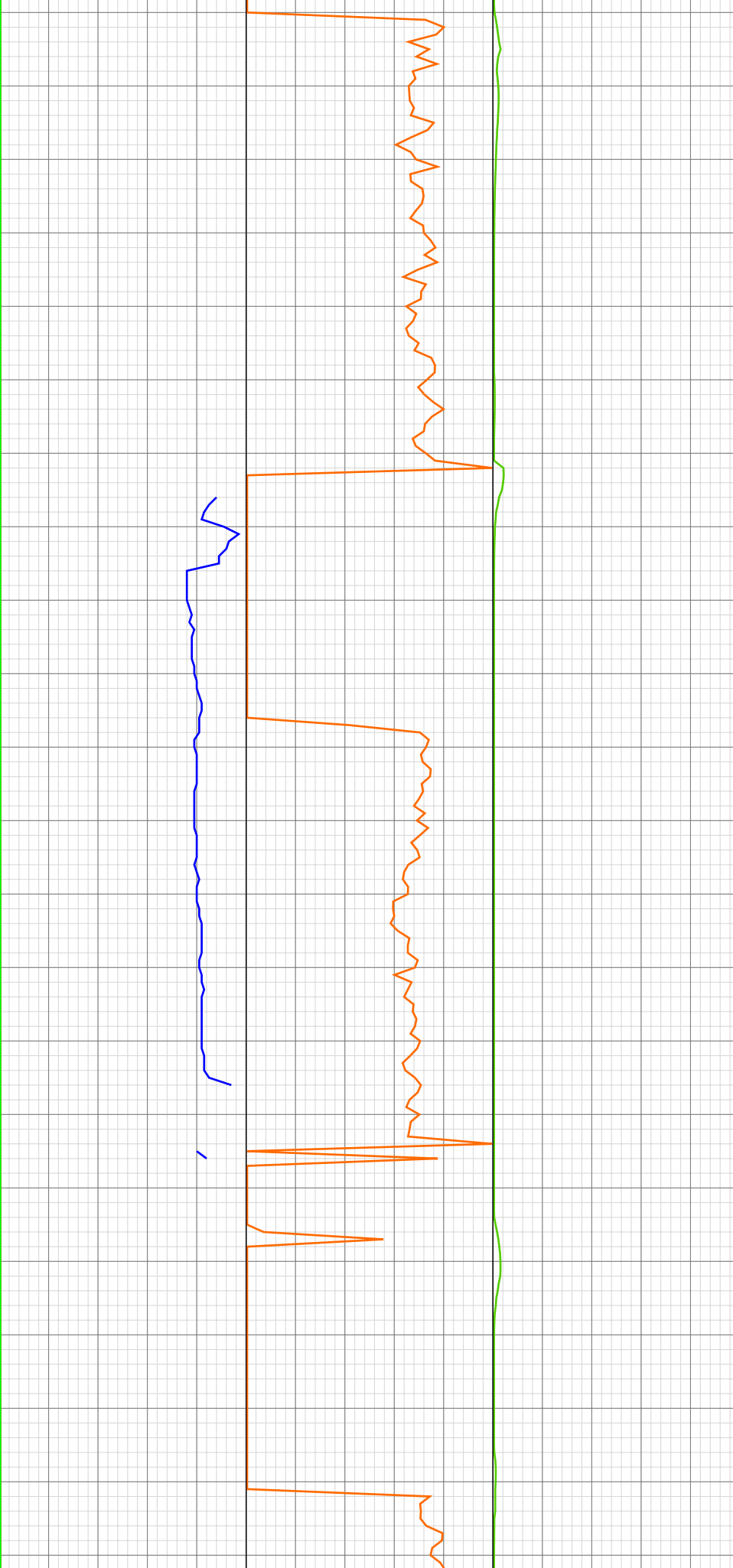


1487.68ft: Connection at 1485.3
1487.68ft: SURVEY @ 1435 INC, 9.0
AZ. 97.5 TVD.1432.26
1487.68ft: ZDIFF from DHC
1487.68ft: SLIDING

1581.00ft: GEARS RECALIBRATED
1581.00ft: ZDIFF from DHC
1581.09ft: Connection at 1576.9
1581.09ft: SLIDING SURVEY @ 1526
INC. 10.8 AZA. 92.4 TVD. 1521.90

1668.82ft: SLIDING
1671.34ft: SURVEY @ 1618' INC.
12.0 AZ. 84.6 TVD 1612.09'
1674.00ft: MUD VIS 48.00
1674.00ft: MUD WEIGHT 8.95
1674.00ft: ZDIFF from DHC
1674.42ft: Connection at 1668.7
1675.00ft: IN TALLY: HOLE DEPTH
SET TO 1668.7

03:43 1700
03:46 1710
03:47 1720
03:49 1730
03:52 1740
03:55 1750
03:58 1760
04:11 1770
04:17 1780
04:21 1790
04:24 1800
04:26 1810
04:28 1820
04:30 1830
04:32 1840
04:34 1850
04:44 1860
04:49 1870
04:54 1880
04:59 1890
05:04 1900
05:07 1910

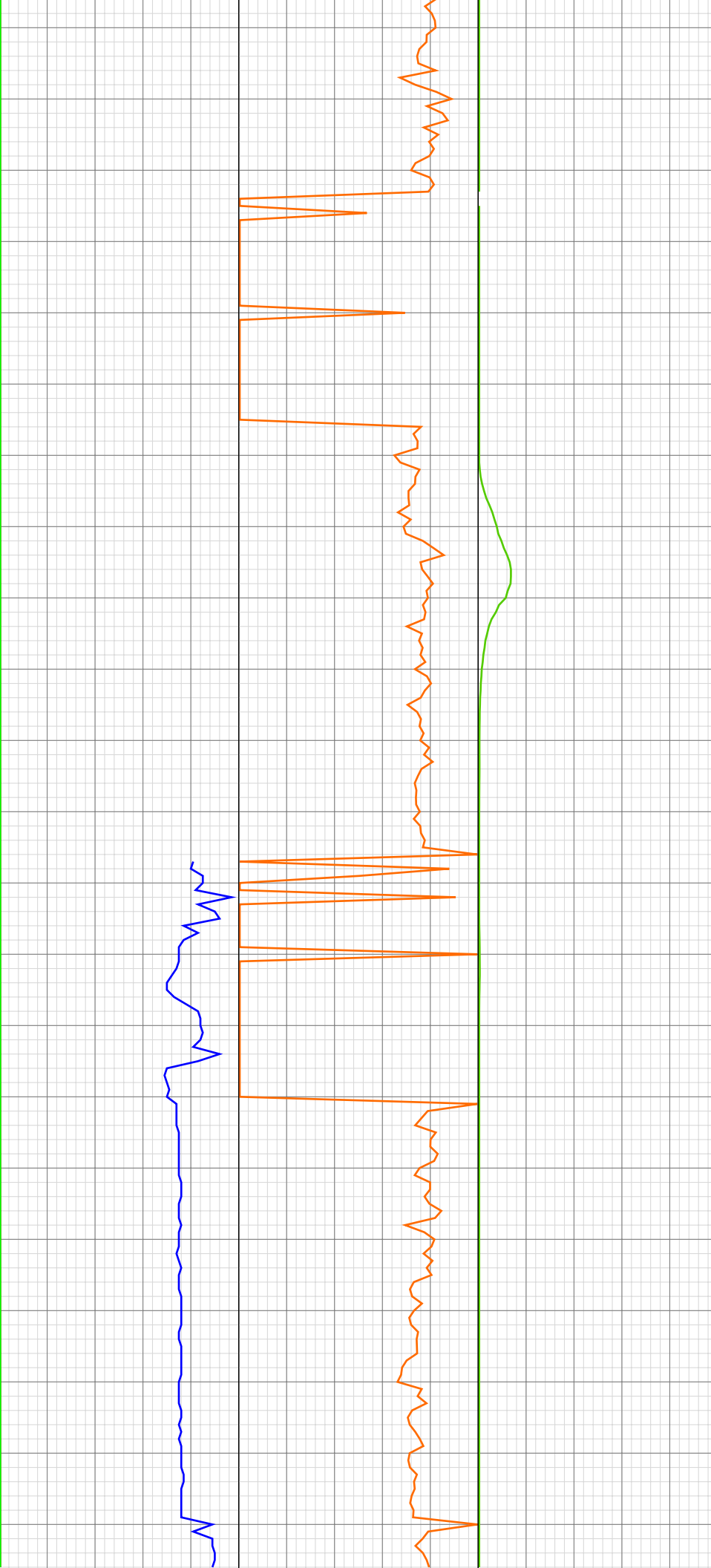


1761.52ft: Connection at 1760.2
1761.52ft: SLIDING
1761.52ft: ZWOB from DHC
1761.52ft: SURVEY @ 1710' INC.
14.3 AZ 83.3 TVD 1701.67'

1783.00ft: MUD WEIGHT 9.00
1783.52ft: MUD VIS 53.00

1853.00ft: ZDIFF from DHC
1853.13ft: Connection at 1851.7
1853.13ft: SLIDING
1855.16ft: SURVEY @1801 INC.
16.5 AZ. 83.4 TVD 1789.40

05:09 1920
05:12 1930
05:14 1940
05:27 1950
05:32 1960
05:36 1970
05:41 1980
05:44 1990
05:46 2000
05:48 2010
05:50 2020
05:53 2030
06:02 2040
06:06 2050
06:10 2060
06:15 2070
06:18 2080
06:20 2090
06:22 2100
06:24 2110
06:26 2120
06:35 2130



1943.28ft: SLIDING
1944.00ft: MUD VIS 55.00
1944.00ft: MUD WEIGHT 9.00
1947.00ft: 008TGAS-Check dryer
cable (rig air)
1947.00ft: ZWOB from DHC
1947.00ft: ZDIFF from DHC
1947.54ft: Connection at 1943.3
1948.00ft: IN TALLY: HOLE DEPTH
SET TO 1943.3
1956.68ft: SURVEY @ 1893 INC.
19.9 AZ. 80.5 TVD. 1876.79

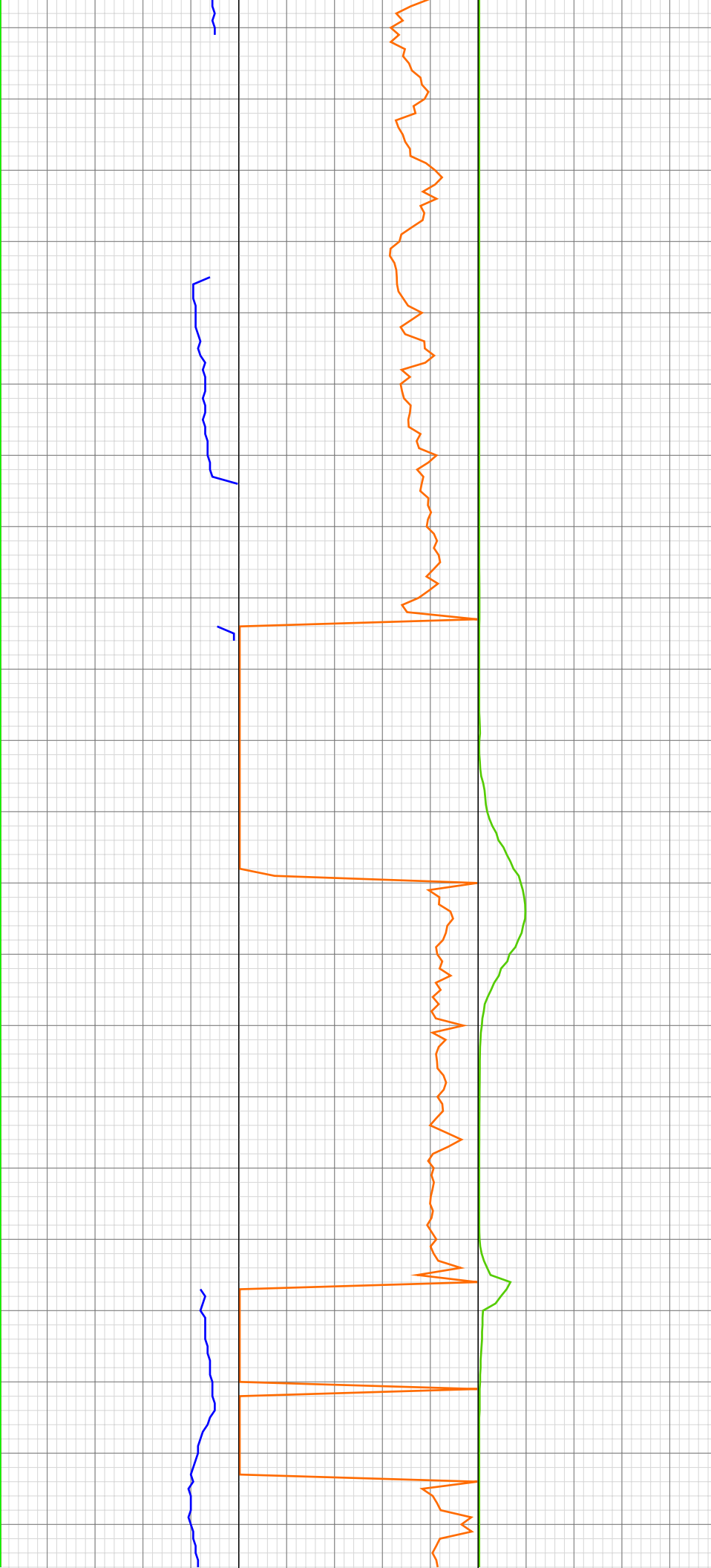
1975.51ft: ZDIFF from DHC

2035.00ft: ZDIFF from DHC
2035.53ft: Connection at 2035.0
2035.53ft: SURVEY @ 1984 inc 22.1
azi 79.2
2036.07ft: SLIDING

2067.05ft: ROTATING

2129.58ft: SURVEY @ 2076 inc 23.6
azi 79.5
2129.58ft: ROTATING ROTATING
Connection at 2126.6

06:38 2140
06:40 2150
06:41 2160
06:43 2170
06:45 2180
06:47 2190
06:49 2200
06:52 2210
06:54 2220
07:03 2230
07:05 2240
07:09 2250
07:12 2260
07:13 2270
07:16 2280
07:18 2290
07:21 2300
07:24 2310
07:32 2320
07:35 2330
07:38 2340
07:41 2350



2222.81ft: WT-9.0+/VIS-54
2222.81ft: Connection at 2218.2
2222.81ft: SLIDING

2259.94ft: ROTATING

2315.37ft: Connection at 2309.2
2315.37ft: SURVEY @ 2259 INC 23.9
AZI 79.9 SLIDING SLIDING

2341.76ft: ROTATING ROTATING

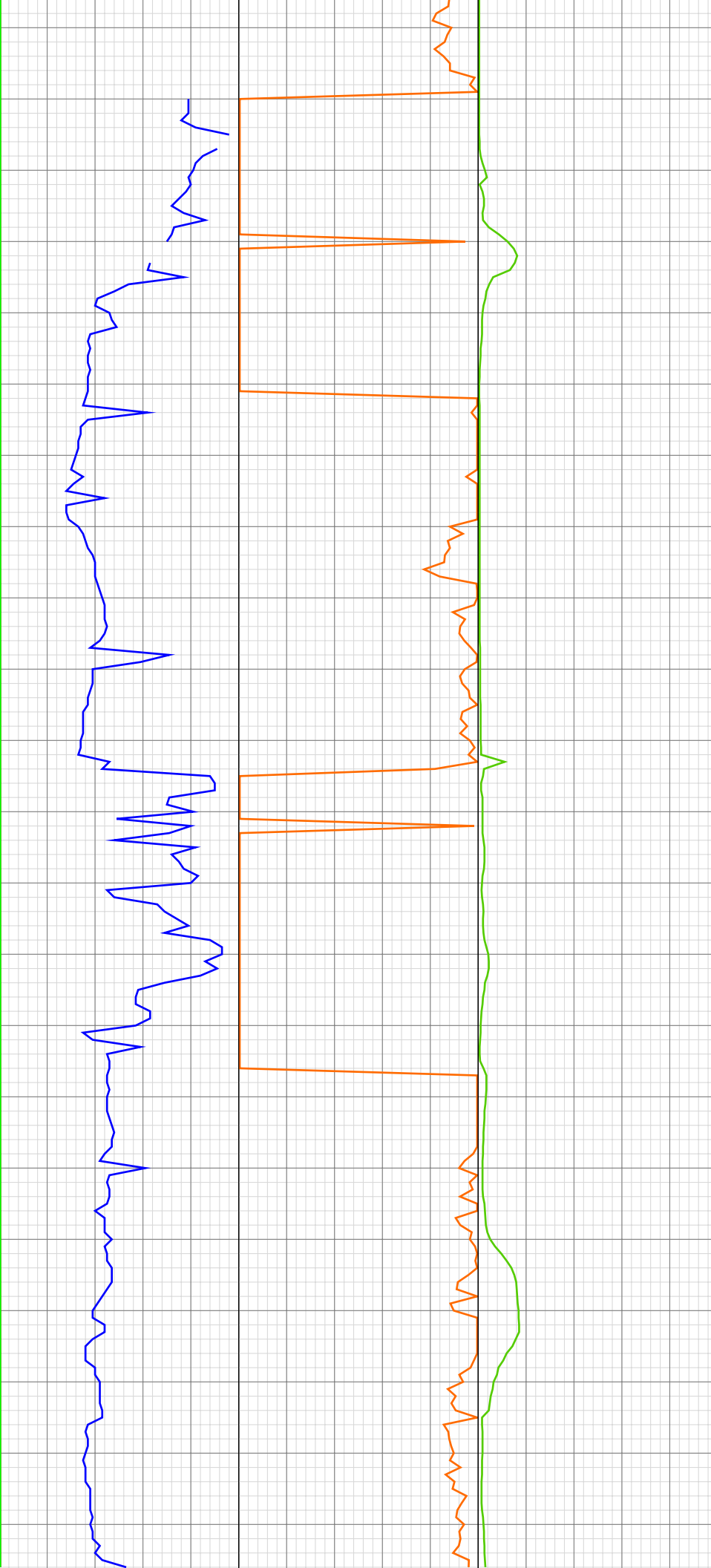
07:43 2360
07:45 2370
07:47 2380
07:49 2390
07:51 2400
08:01 2410
08:04 2420
08:05 2430
08:07 2440
08:09 2450
08:11 2460
08:13 2470
08:15 2480
08:18 2490
08:27 2500
08:29 2510
08:31 2520
08:33 2530
08:34 2540
08:36 2550
08:38 2560
08:41 2570



2408.00ft: ZWOB from DHC
2408.00ft: ZDIFF from DHC
2408.00ft: IN TALLY: HOLE DEPTH
SET TO 2400.6
2408.43ft: Connection at 2400.6
2408.43ft: SURVEY @ 2350 INC 25.1
AZI 79.6 TVD 2297.37

2494.19ft: Connection at 2491.6
2494.19ft: SURVEY @ 2441 INC 23.8
AZI 78.2 TVD 2380.21 ROTATING
ROTATING

08:43 2580
08:52 2590
08:57 2600
09:02 2610
09:06 2620
09:10 2630
09:13 2640
09:15 2650
09:17 2660
09:18 2670
09:20 2680
09:31 2690
09:35 2700
09:39 2710
09:41 2720
09:45 2730
09:47 2740
09:49 2750
09:51 2760
09:53 2770
10:01 2780
10:04 2790



2588.00ft: ZDIFF from DHC
2588.07ft: Connection at 2583.1
2588.07ft: SLIDING SLIDING

2642.30ft: ROTATING

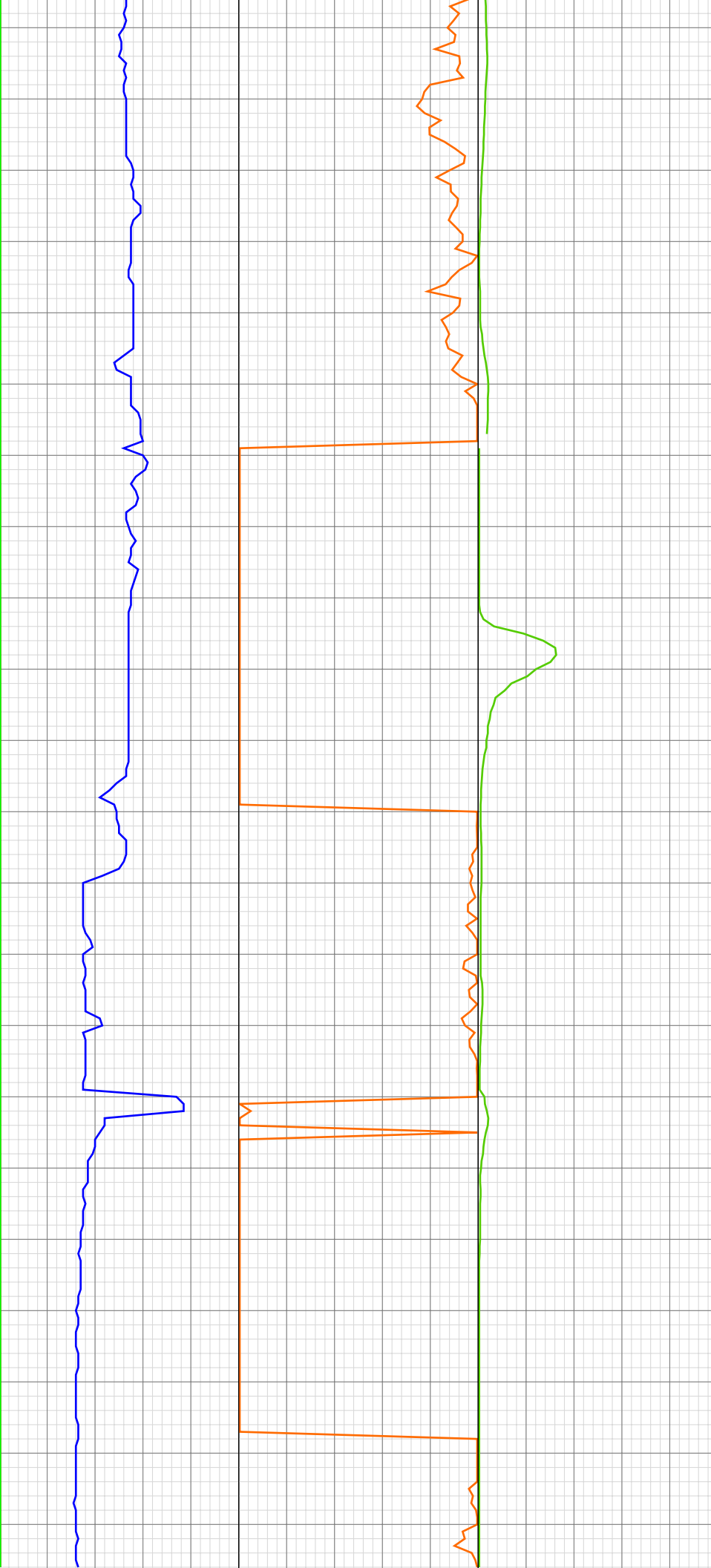
2667.00ft: MUD WEIGHT 9.10
2668.00ft: MUD VIS 0.55

2682.00ft: ZDiffPressure from SideKick sk-06-03-3103
2682.59ft: Connection at 2674.5
2682.59ft: SURVEY @ 2624 INC 23.7
AZI 80.0 SLIDING SLIDING

2727.74ft: ROTATING

2774.00ft: ZWOB from DHC
2774.75ft: Connection at 2674.5
2774.75ft: ROTATING ROTATING
SURVEY @ 2716 INC 24 AZI 82.8
2775.00ft: ZDIFF from DHC

10:06 2800
10:08 2810
10:10 2820
10:13 2830
10:16 2840
10:19 2850
10:33 2860
10:37 2870
10:40 2880
10:44 2890
10:48 2900
10:52 2910
10:54 2920
10:57 2930
10:59 2940
11:12 2950
11:16 2960
11:21 2970
11:26 2980
11:29 2990
11:33 3000
11:35 3010



2829.00ft: MUD WEIGHT 9.10
2830.00ft: MUD VIS 53.00

2868.00ft: ZDIFF from DHC
2868.00ft: IN TALLY: HOLE DEPTH
SET TO 2857.5
2868.64ft: Connection at 2857.5
2868.64ft: SLIDING SLIDING

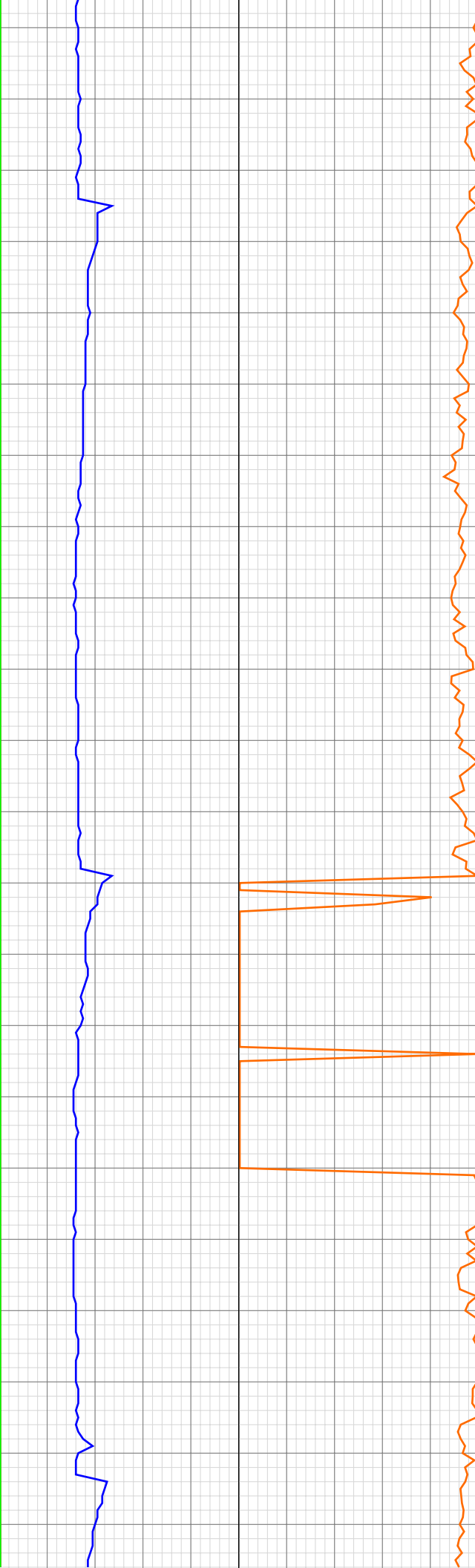
2910.42ft: ROTATING

2949.79ft: Connection at 2949.0
2949.79ft: SURVEY @ 2898 INC 21.7
AZI 84.9
2950.00ft: ZDIFF from DHC
2955.78ft: SLIDING

2967.00ft: 008TGAS-Check dryer
cable (rig air)

2996.33ft: ROTATING ROTATING

11:38 3020
11:40 3030
11:42 3040
11:54 3050
11:56 3060
11:59 3070
12:01 3080
12:03 3090
12:05 3100
12:08 3110
12:10 3120
12:12 3130
12:21 3140
12:25 3150
12:30 3160
12:34 3170
12:37 3180
12:40 3190
12:42 3200
12:44 3210
12:53 3220
13:03 3230



3044.00ft: HOOKLOAD WAS RECALIBRATED
3044.00ft: ZWOB from DHC
3044.00ft: MUD WEIGHT 9.20
3044.00ft: MUD VIS 0.52
3044.00ft: ZDIFF from DHC
3044.67ft: SURVEY @ 2990 INC 24.6 AZI 85.7 TVD 2886.24
3044.67ft: ROTATING ROTATING Connection at 3040.5
3044.67ft: ZDIFF from DHC

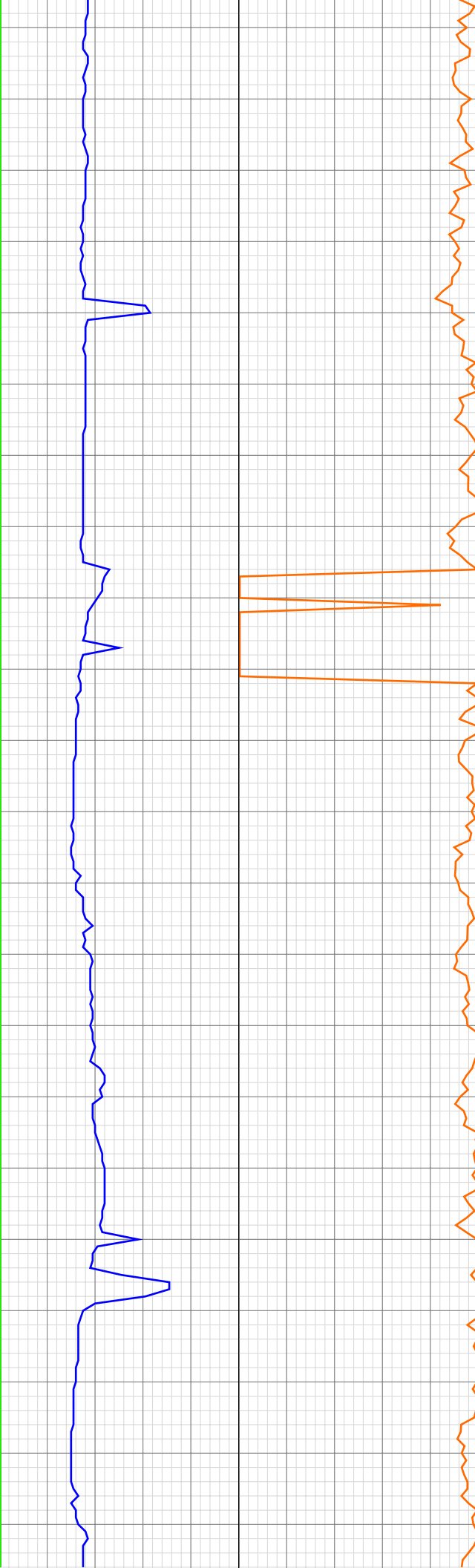
3138.44ft: Connection at 3132.0 SURVEY @ 3082 INC 23.4 AZI 85.1
3143.92ft: SLIDING

3180.36ft: ROTATING

3218.88ft: BOP DRILL

3232.00ft: ZWOB from DHC
3232.00ft: ZDIFF from DHC
3232.14ft: Connection at 3223.7
3232.14ft: SURVEY 3173.25 AZI 85.1

13:06 3240
13:08 3250
13:10 3260
13:13 3270
13:15 3280
13:17 3290
13:19 3300
13:22 3310
13:32 3320
13:38 3330
13:41 3340
13:43 3350
13:45 3360
13:47 3370
13:50 3380
13:52 3390
13:54 3400
14:02 3410
14:06 3420
14:08 3430
14:10 3440
14:12 3450



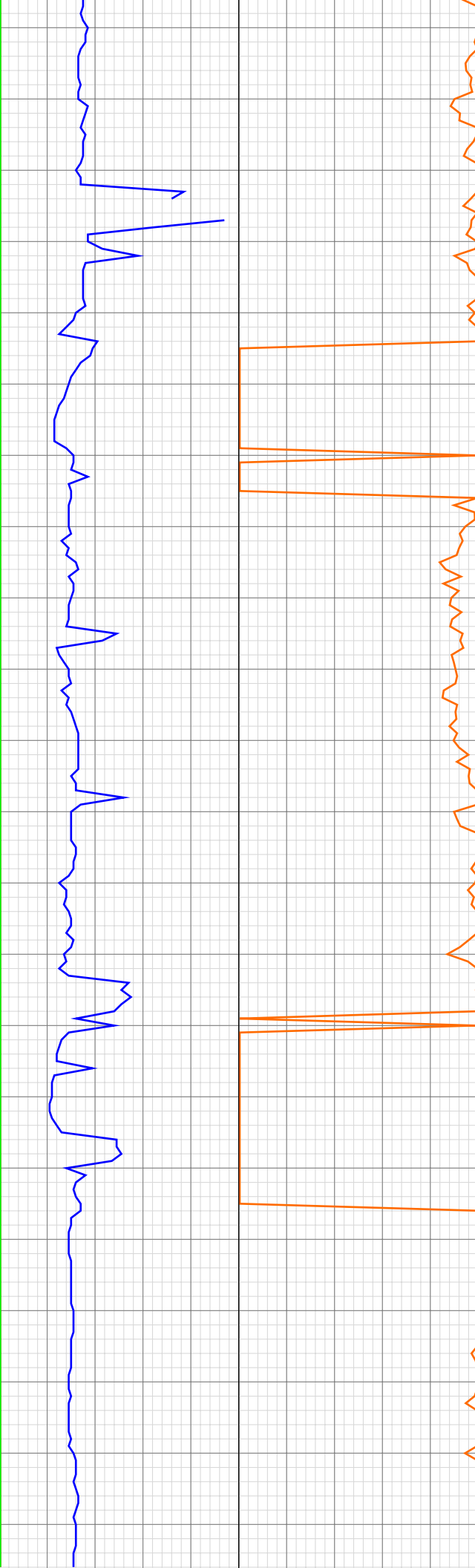
3233.00ft: IN TALLY: HOLE DEPTH SET TO 3223.7

3314.99ft: ZDIFF from DHC
3315.49ft: Connection at 3315.4
3315.49ft: SLIDING

3331.50ft: ROTATING

3408.99ft: MUD WEIGHT 9.35
3408.99ft: MUD VIS 57.00
3409.88ft: SURVEY @ 3357 INC 23.5 AZI 80.1
3409.88ft: ROTATING ROTATING
Connection at 3407.0
3418.01ft: ZDIFF from DHC

14:14 3460
14:16 3470
14:19 3480
14:21 3490
14:23 3500
14:33 3510
14:39 3520
14:43 3530
14:45 3540
14:48 3550
14:50 3560
14:53 3570
14:57 3580
15:00 3590
15:11 3600
15:17 3610
15:22 3620
15:26 3630
15:28 3640
15:30 3650
15:32 3660
15:34 3670



3503.67ft: Connection at 3498.5
3503.67ft: SLIDING SLIDING

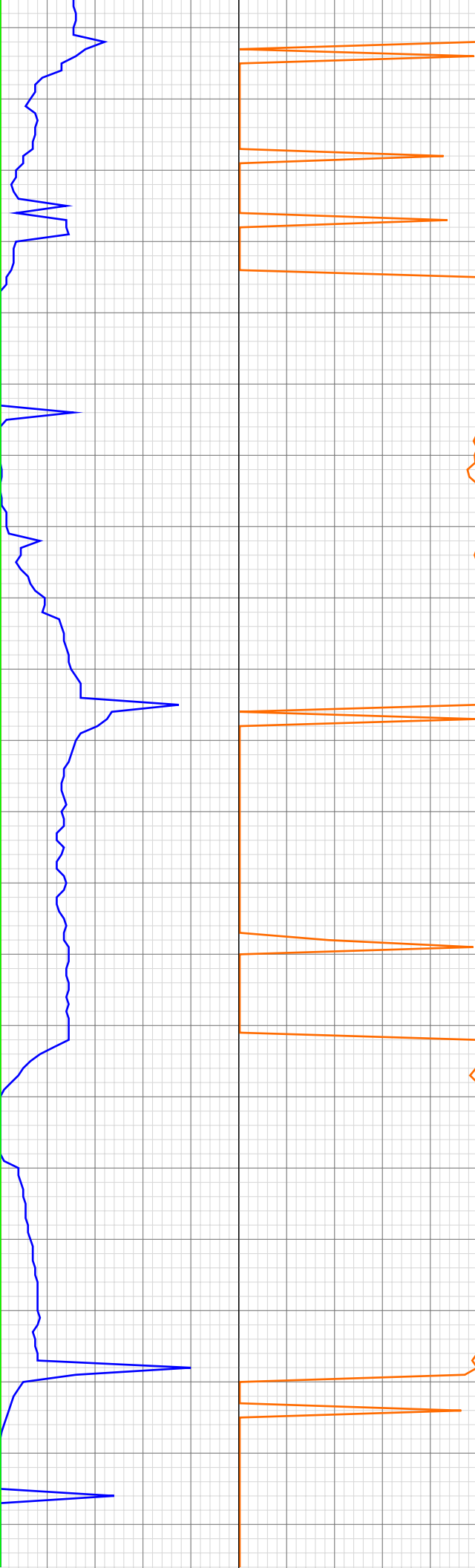
3511.98ft: SURVEY @ 3458 INC 21.9
AZI 79.4

3528.08ft: ROTATING

3597.21ft: SLIDING
3597.21ft: Connection at 3590.2
3599.08ft: SURVEY @ 3540 INC 18.8
AZI 75.7

3628.90ft: ROTATING

15:36 3680
15:50 3690
15:54 3700
15:59 3710
16:04 3720
16:07 3730
16:09 3740
16:11 3750
16:13 3760
16:17 3770
17:12 3780
17:18 3790
17:23 3800
17:28 3810
17:34 3820
17:38 3830
17:41 3840
17:43 3850
17:46 3860
17:57 3870
18:02 3880
18:07 3890



3681.27ft: Connection at 3681.3
3681.27ft: SLIDING

3689.01ft: IN TALLY: HOLE DEPTH
SET TO 3681.3

3715.68ft: ROTATING

3762.01ft: ZDIFF from DHC

3774.02ft: ZDiffPressure from
SideKick sk-06-03-3103
3774.51ft: INCREASE VOLUME
3774.51ft: RIG SERVICE
3774.51ft: SERVICE TOP DRIVE
3774.51ft: Connection at 3772.8
3776.44ft: SLIDING
3778.08ft: SURVEY @ 3722 INC.
12.5 AZ. 71.6 TVD. 3566.68

3793.01ft: 021TGAS 04100525
SW0.30 HW29.00 - 13 days on
3793.01ft: 008TGAS-Check dryer
cable (rig air)

3821.52ft: ROTATING

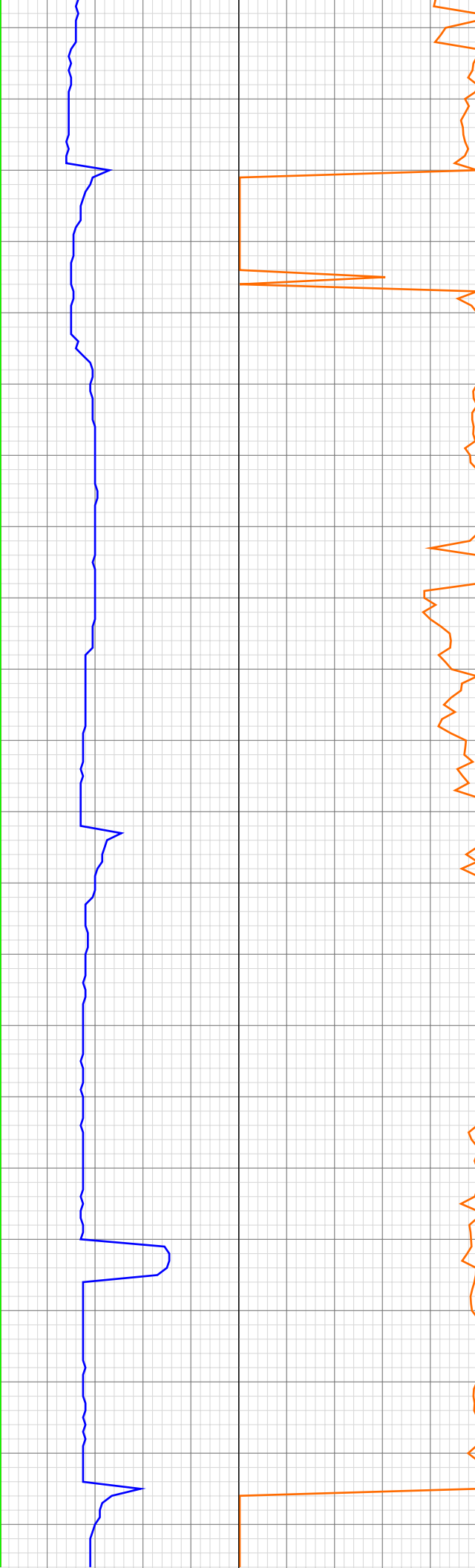
3866.99ft: ZDIFF from DHC
3867.62ft: Connection at 3864.3
3867.62ft: SURVEY @ 3814 INC 8.8
AZI 65.5 TVD 3657 .09
3867.62ft: SLIDING

18:11 3900
18:15 3910
18:20 3920
18:24 3930
18:26 3940
18:28 3950
18:41 3960
18:48 3970
18:54 3980
19:00 3990
19:07 4000
Apr 13, 2011
01:38 4010
01:59 4020
02:11 4030
02:15 4040
02:29 4050
02:37 4060
02:45 4070
02:50 4080
02:53 4090
02:58 4100
03:10 4110



3918.93ft: ROTATING
3925.98ft: MUD VIS 53.00
3925.98ft: MUD WEIGHT 9.45
3960.01ft: ZDIFF from DHC
3960.60ft: Connection at 3955.8
3960.60ft: SURVEY @ 3905 INC. 5.4
AZ. 38.7 TVD. 3747.40
3960.99ft: IN TALLY: HOLE DEPTH
SET TO 3955.8
4000.00ft: BIT DEPTH CHANGED TO
0.0 FEET
4000.00ft: 008TGAS-Check dryer
cable (rig air)
4000.00ft: BIT DEPTH CHANGED TO
2216.0 FEET
4000.00ft: ZDIFF from DHC
4000.00ft: ZWOB from DHC
4000.00ft: ZDiffPressure from
SideKick sk-06-03-3103
4000.98ft: PUMP PILL
4000.98ft: SLIP AND CUT
4000.98ft: PULL RTHD RUBBER
4000.98ft: INSTALL RTHD RUBBER
4000.98ft: FILL PIPE BREAK CIRC
4000.98ft: FILL PIPE
4002.00ft: ZERO ALL PUMPS from
SideKick sk-06-03-3103
4002.89ft: CIRCULATE
4002.89ft: PUMP SWEEP
4004.00ft: ZWOB from SideKick
sk-06-03-3103
4004.00ft: MUD VIS 52.00
4004.82ft: MUD WEIGHT 9.50
4045.01ft: ZDIFF from DHC
4045.93ft: Connection at 4046.1
SURVEY @ 3996 INC. 2.2 AZ.
341.0 TVD. 3838.21
4045.93ft: SLIDING
4104.00ft: MUD WEIGHT 9.50
4104.23ft: MUD VIS 50.00

03:16 4120
03:21 4130
03:31 4140
03:37 4150
03:45 4160
03:48 4170
03:52 4180
03:55 4190
04:03 4200
04:11 4210
04:19 4220
04:25 4230
04:35 4240
04:38 4250
04:42 4260
04:46 4270
04:50 4280
04:54 4290
04:58 4300
05:03 4310
05:07 4320
05:29 4330



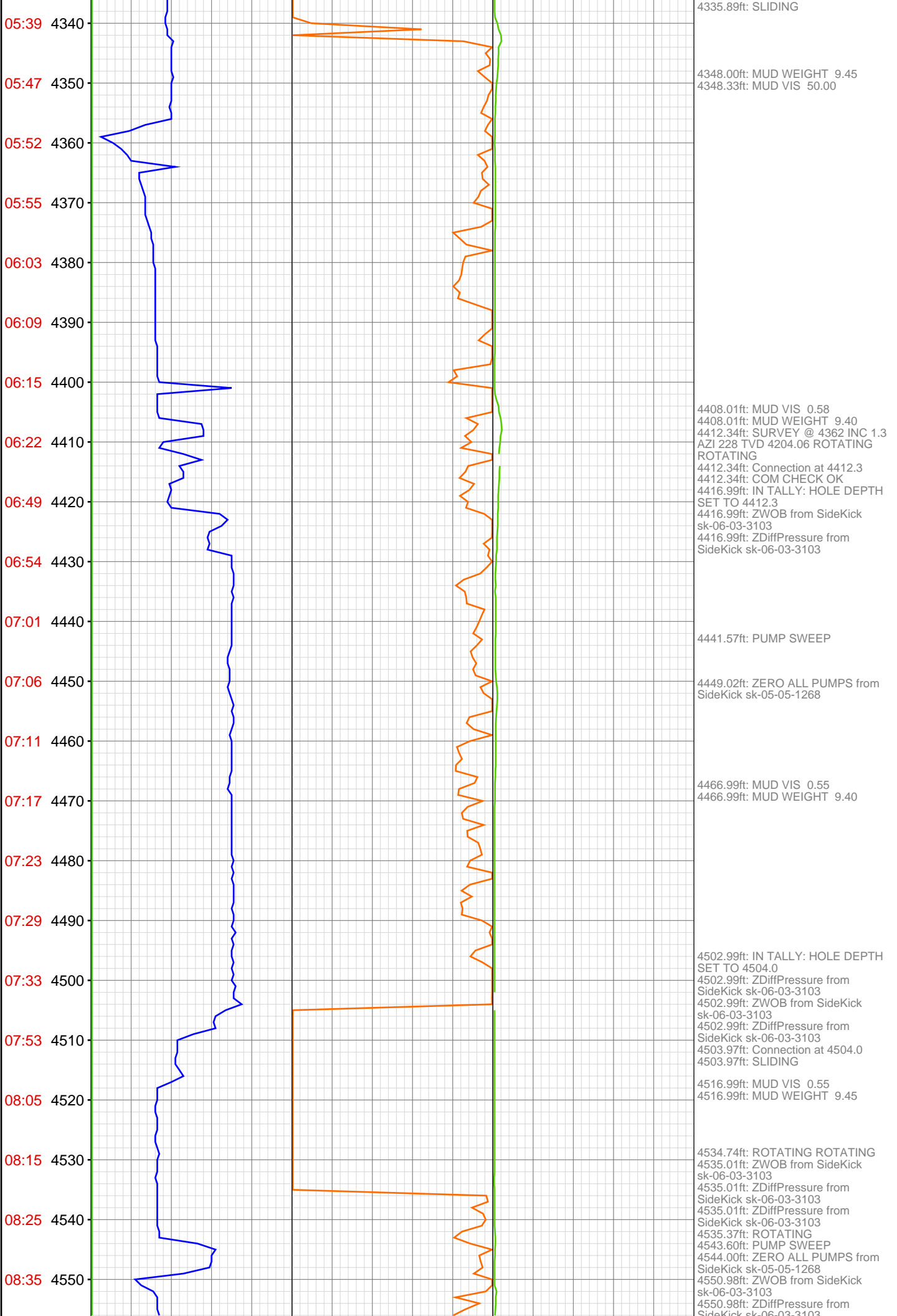
4139.24ft: Connection at 4137.6
4139.24ft: SLIDING
4139.73ft: SURVEY @ 4087 INC. 2.1
AZ. 281.4 TVD. 3929.16

4156.00ft: ZWOB from SideKick
sk-06-03-3103

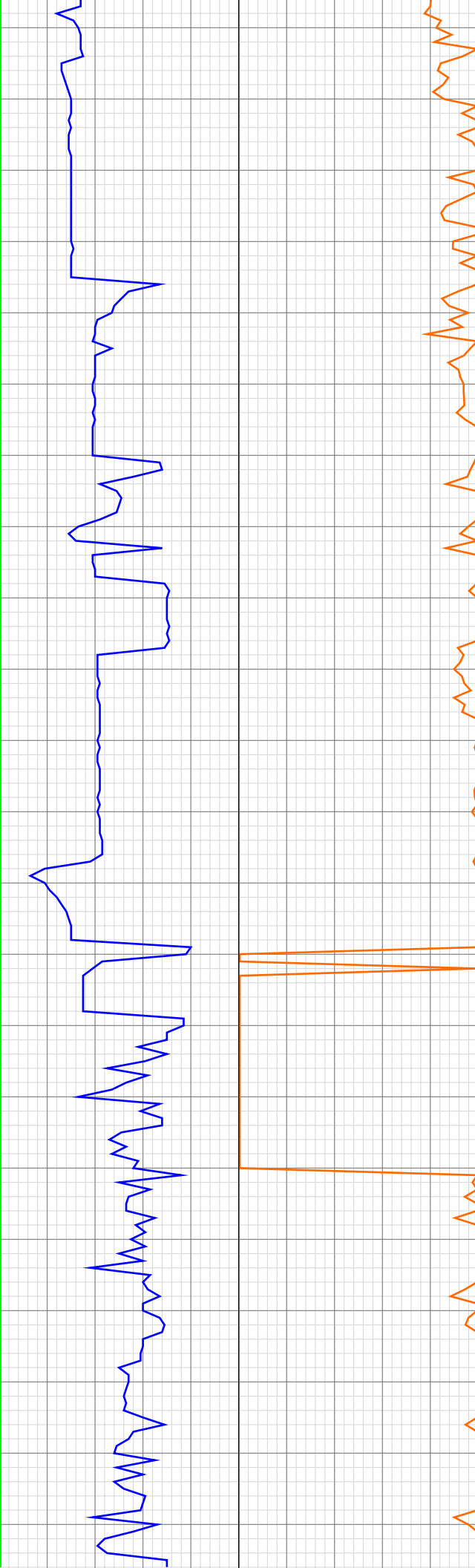
4195.01ft: MUD VIS 55.00
4195.01ft: MUD WEIGHT 9.45

4231.99ft: ZWOB from DHC
4232.55ft: Connection at 4229.2
4232.55ft: SURVEY @ 4179 INC. 1.4
AZ. 255.7 TVD. 4021.12

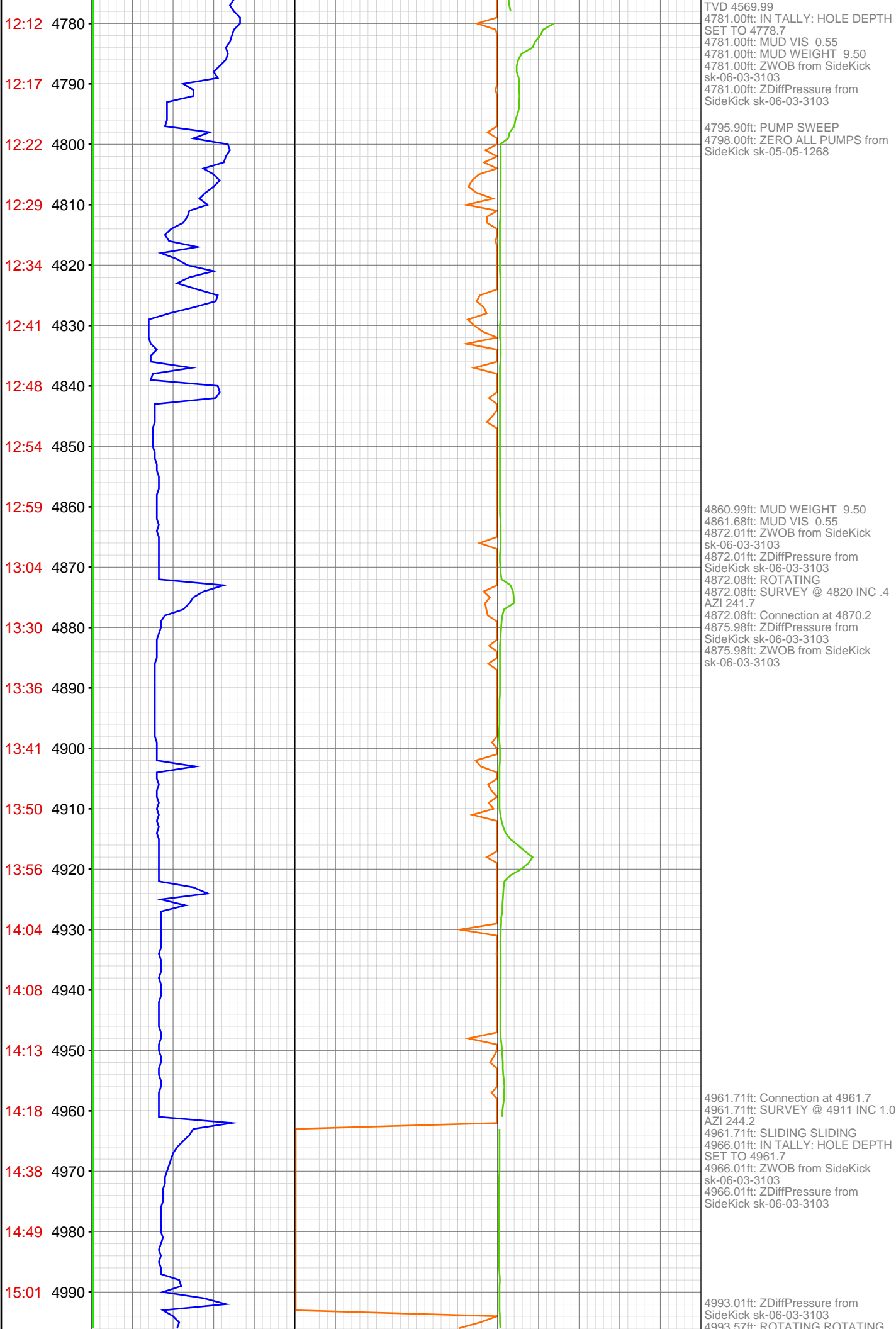
4324.02ft: 008TGAS-Check dryer
cable (rig air)
4324.05ft: Connection at 4320.7



08:48 4560
08:57 4570
09:03 4580
09:09 4590
09:34 4600
09:40 4610
09:46 4620
09:52 4630
09:59 4640
10:05 4650
10:11 4660
10:15 4670
10:20 4680
10:45 4690
10:57 4700
11:05 4710
11:17 4720
11:32 4730
11:39 4740
11:43 4750
11:47 4760
11:52 4770



4556.00ft: MUD VIS 0.01
4577.00ft: MUD VIS 0.55
4577.99ft: MUD WEIGHT 9.40
4595.01ft: IN TALLY: HOLE DEPTH SET TO 4595.5
4595.01ft: ZERO ALL PUMPS from SideKick sk-05-05-1268
4595.01ft: ZWOB from SideKick sk-06-03-3103
4595.01ft: ZDiffPressure from SideKick sk-06-03-3103
4595.44ft: ROTATING SURVEY @ 4545 INC 1.1 AZI 187.5
4595.44ft: Connection at 4595.4
4620.54ft: PUMP SWEEP
4624.02ft: ZERO ALL PUMPS from SideKick sk-05-05-1268
4644.00ft: HGAS_005: System Test Performed: No Faults Detected
4681.00ft: MUD VIS 0.55
4681.00ft: MUD WEIGHT 9.40
4687.04ft: ZWOB from SideKick sk-06-03-3103
4687.99ft: IN TALLY: HOLE DEPTH SET TO 4687.1
4687.99ft: HOOKLOAD WAS RECALIBRATED
4687.99ft: HOOK LOAD THRESHOLD RECALIBRATED TO 37
4687.99ft: ZDiffPressure from SideKick sk-06-03-3103
4690.85ft: SLIDING
4716.99ft: MUD VIS 0.55
4716.99ft: MUD WEIGHT 9.40
4720.01ft: 008TGAS-Check dryer cable (rig air)
4720.01ft: ZWOB from SideKick sk-06-03-3103
4720.01ft: ZDiffPressure from SideKick sk-06-03-3103
4720.01ft: ZDiffPressure from SideKick sk-06-03-3103
4720.01ft: ZWOB from SideKick sk-06-03-3103
4720.01ft: ZDiffPressure from SideKick sk-06-03-3103
4720.74ft: ROTATING
4720.74ft: ROTATING
4778.71ft: Connection at 4778.7
4778.71ft: ROTATING ROTATING SURVEY @ 4728 INC .5 AZI 150.5



TVD 4569.99
 4781.00ft: IN TALLY: HOLE DEPTH SET TO 4778.7
 4781.00ft: MUD VIS 0.55
 4781.00ft: MUD WEIGHT 9.50
 4781.00ft: ZWOB from SideKick sk-06-03-3103
 4781.00ft: ZDiffPressure from SideKick sk-06-03-3103

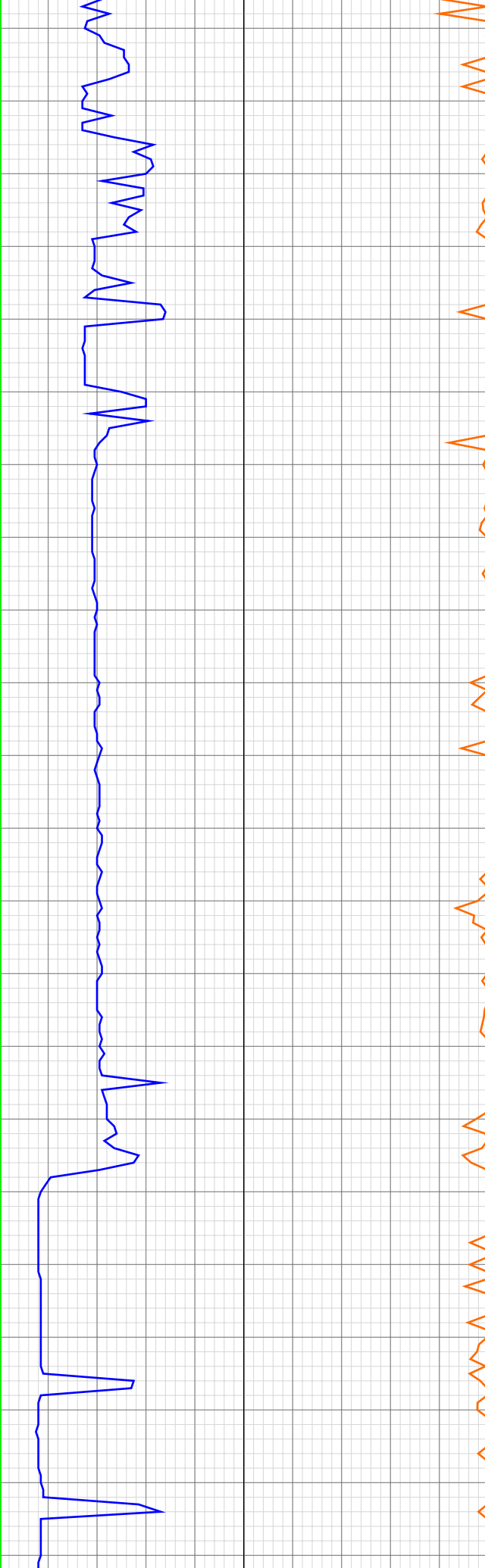
4795.90ft: PUMP SWEEP
 4798.00ft: ZERO ALL PUMPS from SideKick sk-05-05-1268

4860.99ft: MUD WEIGHT 9.50
 4861.68ft: MUD VIS 0.55
 4872.01ft: ZWOB from SideKick sk-06-03-3103
 4872.01ft: ZDiffPressure from SideKick sk-06-03-3103
 4872.08ft: ROTATING
 4872.08ft: SURVEY @ 4820 INC .4 AZI 241.7
 4872.08ft: Connection at 4870.2
 4875.98ft: ZDiffPressure from SideKick sk-06-03-3103
 4875.98ft: ZWOB from SideKick sk-06-03-3103

4961.71ft: Connection at 4961.7
 4961.71ft: SURVEY @ 4911 INC 1.0 AZI 244.2
 4961.71ft: SLIDING SLIDING
 4966.01ft: IN TALLY: HOLE DEPTH SET TO 4961.7
 4966.01ft: ZWOB from SideKick sk-06-03-3103
 4966.01ft: ZDiffPressure from SideKick sk-06-03-3103

4993.01ft: ZDiffPressure from SideKick sk-06-03-3103
 4993.57ft: ROTATING ROTATING

15:21 5000
15:28 5010
15:33 5020
15:39 5030
15:46 5040
15:50 5050
16:48 5060
16:57 5070
17:02 5080
17:10 5090
17:22 5100
17:25 5110
17:32 5120
17:41 5130
17:48 5140
18:16 5150
18:24 5160
18:33 5170
18:44 5180
18:54 5190
19:02 5200
19:08 5210



4993.96ft: ZWOB from SideKick
sk-06-03-3103

5014.01ft: MUD VIS 0.55
5014.01ft: MUD WEIGHT 9.55

5052.99ft: HOOKLOAD WAS
RECALIBRATED
5052.99ft: ZWOB from SideKick
sk-06-03-3103
5053.35ft: RIG SERVICE
5053.35ft: SURVEY @ 5003 INC .4
AZI 265.8 ROTATING
5053.35ft: SURVEY @ 5003 INC .4
AZI 265.8 TVD 4844.97
5053.35ft: CONNECTION @5053
5053.35ft: ZDiffPressure from
SideKick sk-06-03-3103
5054.99ft: IN TALLY: HOLE DEPTH
SET TO 5053.4

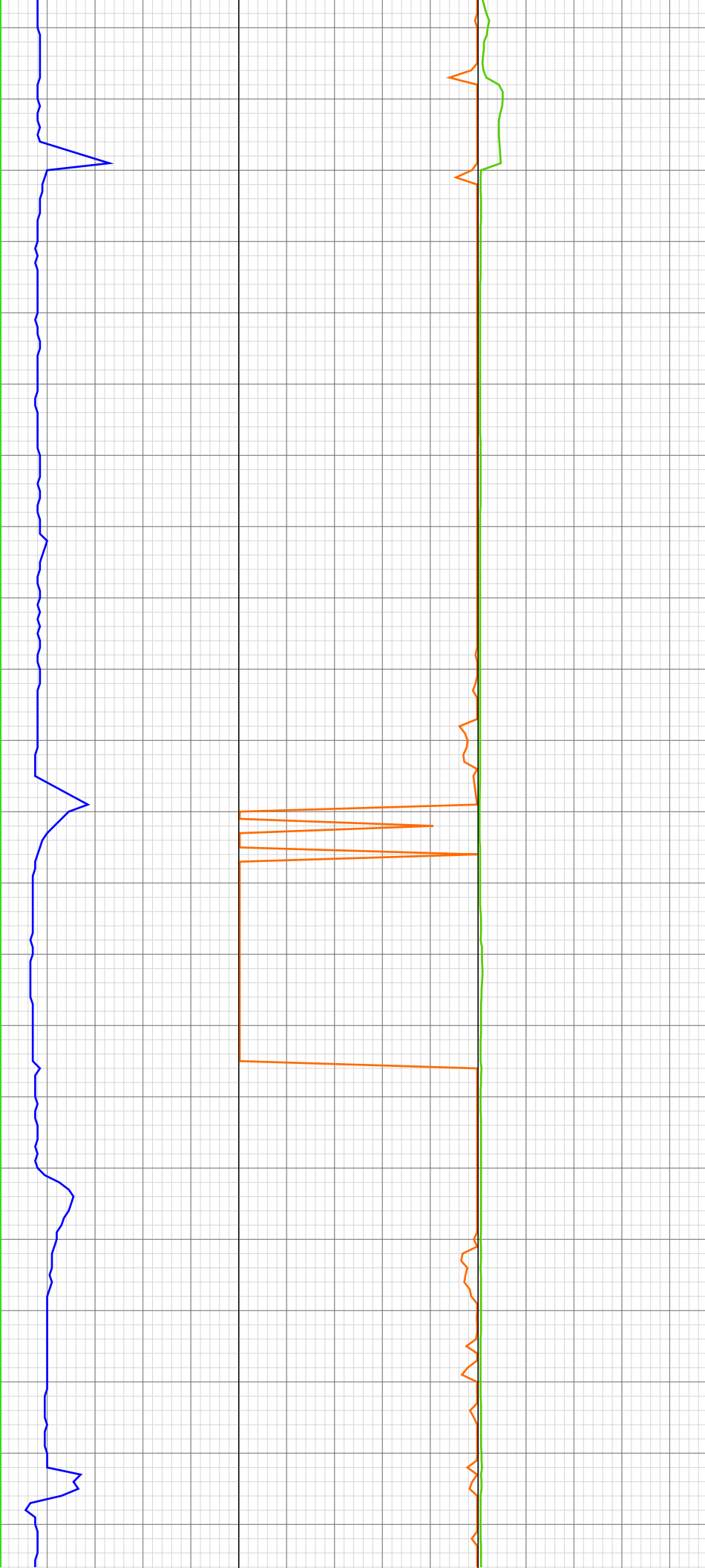
5087.99ft: MUD VIS 0.55
5089.01ft: MUD WEIGHT 9.55

5098.00ft: 021TGAS 04100525
SW0.30 HW29.00 - 14 days on
5098.00ft: 008TGAS-Check dryer
cable (rig air)

5144.00ft: IN TALLY: HOLE DEPTH
SET TO 5144.8
5144.00ft: BIT DEPTH CHANGED TO
5140.0 FEET
5144.00ft: ZDiffPressure from
SideKick sk-06-03-3103
5144.00ft: ZWOB from SideKick
sk-06-03-3103
5144.00ft: MUD VIS 52.00
5144.00ft: MUD WEIGHT 9.50
5144.78ft: Connection at 5144.8
5144.78ft: SURVEY @ 5094 INC .4
AZI 267.3
5152.99ft: ZERO ALL PUMPS from
SideKick sk-05-05-1268
5153.31ft: PUMP SWEEP

5225.99ft: IN TALLY: HOLE DEPTH

19:14 5220
19:23 5230
19:47 5240
19:53 5250
19:58 5260
20:03 5270
20:08 5280
20:12 5290
20:19 5300
20:28 5310
20:38 5320
20:56 5330
21:07 5340
21:16 5350
21:24 5360
21:38 5370
21:44 5380
21:50 5390
22:02 5400
22:17 5410
22:29 5420
23:01 5430



5235.99ft: IN TALLY: HOLE DEPTH
SET TO 5236.4
5235.99ft: MUD VIS 50.00
5235.99ft: MUD WEIGHT 9.40
5235.99ft: HOOKLOAD WAS
RECALIBRATED
5235.99ft: HOOK LOAD
THRESHOLD RECALIBRATED TO
47
5235.99ft: ZWOB from SideKick
sk-06-03-3103
5235.99ft: ZDiffPressure from
SideKick sk-06-03-3103
5236.42ft: SURVEY @5186' INC 0.7
AZ 228.9 TVD 5027.96'
5236.42ft: Connection at 5236.4
5239.01ft: BIT DEPTH CHANGED TO
5239.0 FEET

5258.99ft: MUD VIS 53.00
5258.99ft: MUD WEIGHT 9.40

5325.00ft: IN TALLY: HOLE DEPTH
SET TO 5328.0
5325.00ft: ZWOB from SideKick
sk-06-03-3103
5328.02ft: SURVEY @5278' INC 1.1
AZ 241.2 TVD 5119.95'
5328.02ft: Connection at 5328.0
5328.02ft: SLIDING
5329.99ft: MUD VIS 55.00
5330.87ft: MUD WEIGHT 9.50

5362.96ft: ROTATING

5379.00ft: ZERO ALL PUMPS from
SideKick sk-05-05-1268

5389.99ft: MUD VIS 53.00
5389.99ft: MUD WEIGHT 9.45

5422.01ft: IN TALLY: HOLE DEPTH
SET TO 5419.6
5422.01ft: ZWOB from SideKick
sk-06-03-3103
5422.01ft: ZDiffPressure from
SideKick sk-06-03-3103
5422.01ft: ZERO ALL PUMPS from
SideKick sk-05-05-1268
5422.51ft: Connection at 5419.6
5422.51ft: SURVEY @5369' INC 0.4
AZ 149.8 TVD 5210.95'
5423.00ft: MUD VIS 55.00
5423.88ft: MUD WEIGHT 9.45

23:07 5440
23:16 5450
23:25 5460
23:32 5470
23:41 5480
23:49 5490
23:54 5500
Apr 14, 2011
00:20 5520
00:30 5530
00:44 5540
00:54 5550
01:05 5560
01:15 5570
01:23 5580
01:30 5590
01:37 5600
02:00 5610
02:09 5620
02:16 5630
02:25 5640
02:34 5650



5454.00ft: 008TGAS-Check dryer cable (rig air)

5500.00ft: MUD VIS 55.00
5500.98ft: MUD WEIGHT 9.50
5511.25ft: Connection at 5511.2
5511.25ft: SURVEY @5461 INC 0.8 AZ 79.2 TVD 5302.94'
5512.99ft: ZERO ALL PUMPS from SideKick sk-05-05-1268
5514.01ft: IN TALLY: HOLE DEPTH SET TO 5511.2
5514.01ft: ZDiffPressure from SideKick sk-06-03-3103
5514.01ft: ZWOB from SideKick sk-06-03-3103

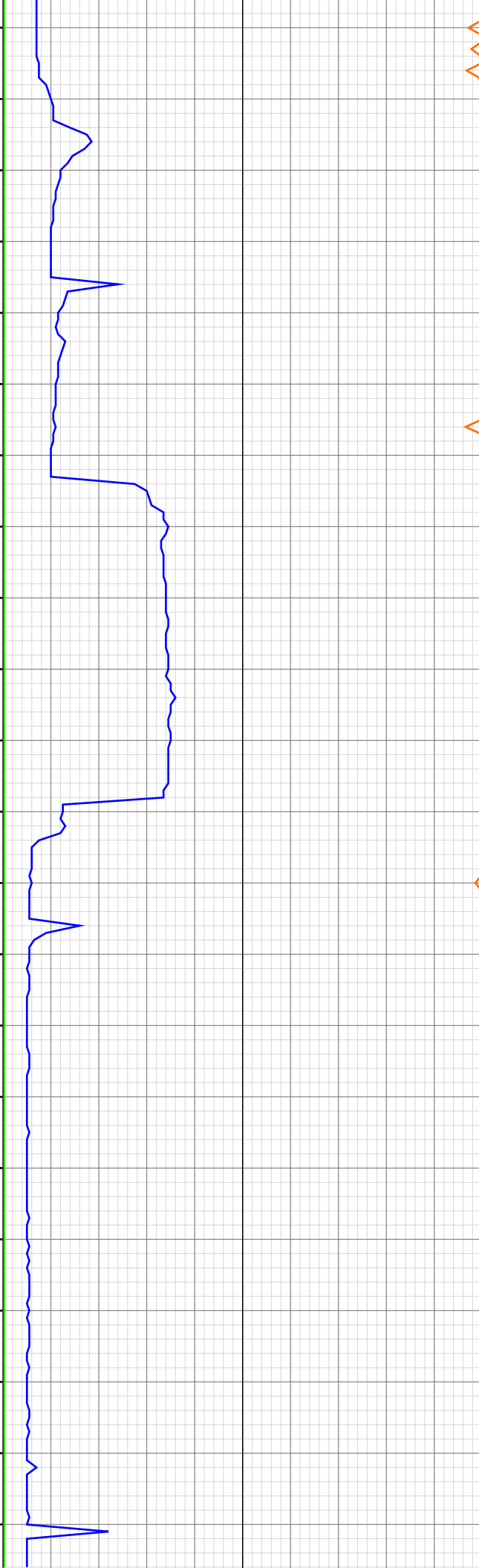
5568.01ft: MUD VIS 53.00
5569.00ft: MUD WEIGHT 9.50

5602.00ft: IN TALLY: HOLE DEPTH SET TO 5602.8
5602.00ft: ZWOB from SideKick sk-06-03-3103
5602.00ft: ZDiffPressure from SideKick sk-06-03-3103
5602.82ft: Connection at 5602.8
5602.82ft: SURVEY 5552' INC 0.5 AZ 39.4 TVD 5393.94'

5625.00ft: MUD VIS 55.00
5625.00ft: MUD WEIGHT 9.45

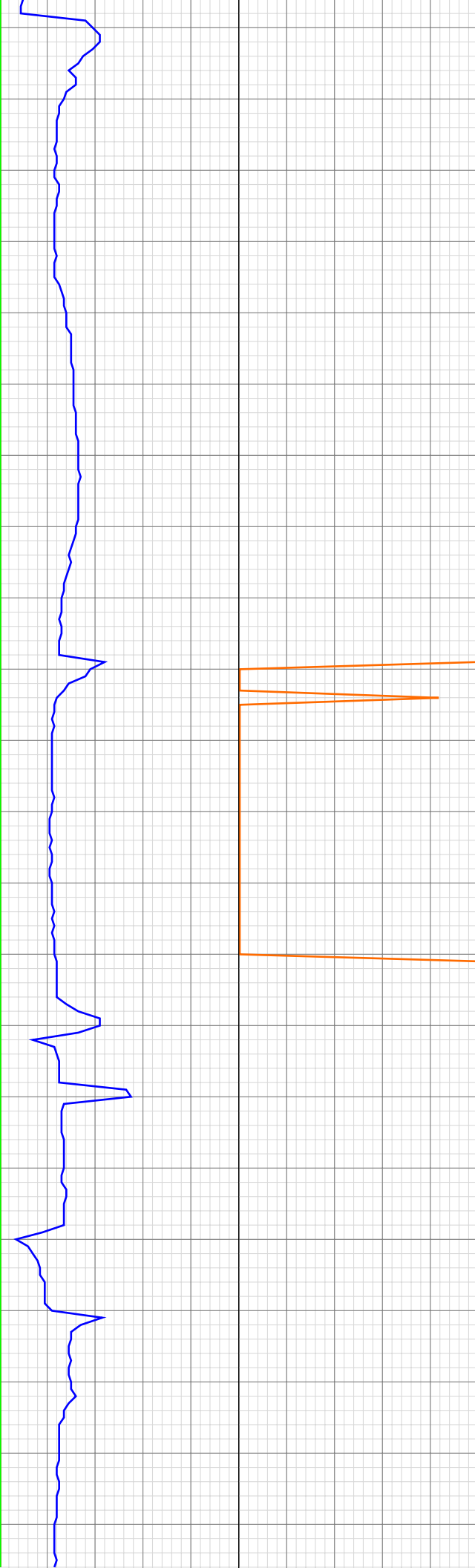
5673.00ft: ZERO ALL PUMPS from SideKick sk-05-05-1268
5694.46ft: Connection at 5694.4
5694.46ft: SURVEY @5644' INC 0.3 AZ 309.1 TVD 5485.93'
5695.01ft: IN TALLY: HOLE DEPTH SET TO 5694.4

02:43 5660
02:58 5670
03:08 5680
03:16 5690
03:43 5700
03:53 5710
04:03 5720
04:09 5730
04:20 5740
04:30 5750
04:41 5760
04:48 5770
04:58 5780
05:29 5790
05:38 5800
05:45 5810
05:54 5820
06:04 5830
06:12 5840
06:20 5850
06:28 5860
06:36 5870

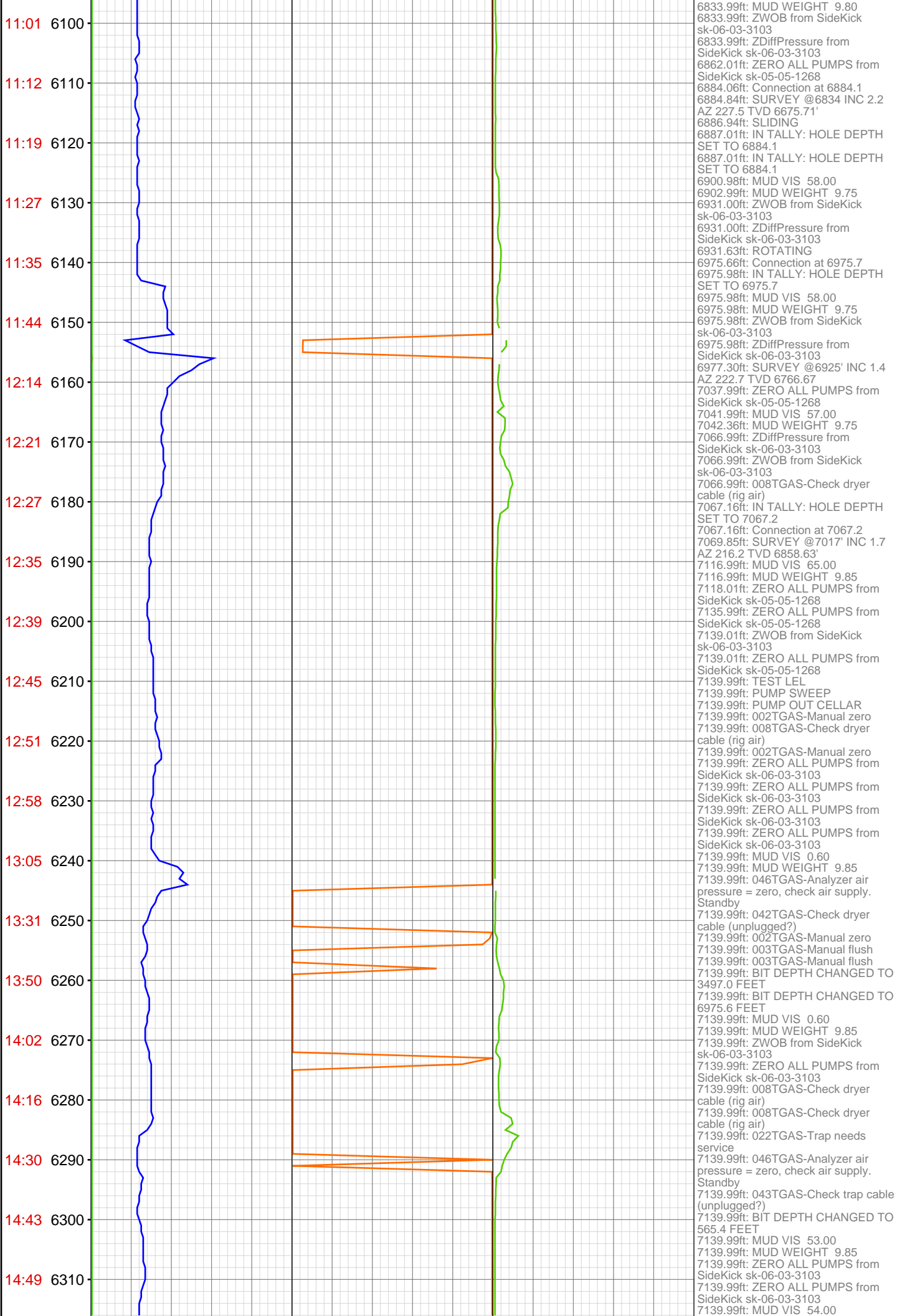


5695.01ft: MUD VIS 56.00
5695.01ft: MUD WEIGHT 9.45
5746.00ft: ZERO ALL PUMPS from SideKick sk-05-05-1268
5764.99ft: MUD VIS 55.00
5764.99ft: MUD WEIGHT 9.50
5785.01ft: IN TALLY: HOLE DEPTH SET TO 5785.9
5785.01ft: ZWOB from SideKick sk-06-03-3103
5785.01ft: ZDiffPressure from SideKick sk-06-03-3103
5785.93ft: Connection at 5785.9
5785.93ft: SURVEY @ 5735' INC 0.0 AZ 100.4 TVD 5576.93'
5785.99ft: 008TGAS-Check dryer cable (rig air)
5808.99ft: ZERO PUMP3 from SideKick sk-05-05-1268
5841.99ft: MUD VIS 0.54
5841.99ft: MUD WEIGHT 9.40
5877.20ft: IN TALLY: HOLE DEPTH SET TO 5877.2
5877.20ft: Connection at 5877.2
5877.20ft: SURVEY @ 5827 inc .4 azi 272.1 tvd 5668.93 ROTATING ROTATING CHECK C.O.M. OK
5877.99ft: ZDiffPressure from SideKick sk-06-03-3103
5877.99ft: ZWOB from SideKick sk-06-03-3103
5877.99ft: PVT Horn Disabled
5877.99ft: PVT Horn Enabled
5877.99ft: ZERO ALL PUMPS from SideKick sk-06-03-3868
5878.84ft: PUMP SWEEP
5881.99ft: MUD VIS 0.55
5881.99ft: MUD WEIGHT 9.40
5885.30ft: PUMP OUT CELLAR
5954.00ft: MUD WEIGHT 9.40
5954.20ft: MUD VIS 0.60
5968.01ft: ZWOB from SideKick sk-06-03-3103
5968.01ft: ZDiffPressure from SideKick sk-06-03-3103
5968.77ft: Connection at 5968.8
5970.01ft: IN TALLY: HOLE DEPTH SET TO 5968.8
5970.24ft: SURVEY @ 5918 inc .8 azi 229.3
5970.74ft: SLIDING SLIDING
5997.01ft: MUD VIS 0.58
5997.38ft: MUD WEIGHT 9.40
6010.01ft: ZWOB from SideKick sk-06-03-3103
6010.01ft: ZDiffPressure from SideKick sk-06-03-3103
6010.56ft: ROTATING ROTATING
6010.56ft: ROTATING ROTATING
6014.50ft: PUMP SWEEP
6016.99ft: ZERO ALL PUMPS from SideKick sk-05-05-1268
6039.99ft: MUD VIS 0.54
6039.99ft: MUD WEIGHT 9.40
6060.01ft: ZWOB from SideKick sk-06-03-3103
6060.01ft: ZDiffPressure from SideKick sk-06-03-3103
6060.37ft: Connection at 6060.4
6060.37ft: ROTATING SURVEY @ 6010 inc .4 azi 127.3 tvd 5851.93
6062.01ft: IN TALLY: HOLE DEPTH SET TO 6060.4
6097.01ft: MUD VIS 0.55
6098.00ft: MUD WEIGHT 9.45
6114.99ft: ZWOB from SideKick sk-06-03-3103
6114.99ft: ZDiffPressure from SideKick sk-06-03-3103
6122.01ft: 008TGAS-Check dryer cable (rig air)
6135.11ft: PUMP SWEEP
6143.01ft: ZERO ALL PUMPS from SideKick sk-05-05-1268
6154.00ft: IN TALLY: HOLE DEPTH SET TO 6152.0
6154.99ft: ZDiffPressure from SideKick sk-06-03-3103
6154.99ft: ZWOB from SideKick sk-06-03-3103
6155.97ft: Connection at 6152.0
6155.97ft: SURVEY @ 6102 inc.6 azi 207.8
6160.01ft: MUD WEIGHT 9.40
6160.14ft: MUD VIS 0.55
6233.01ft: MUD VIS 0.56
6233.99ft: MUD WEIGHT 9.50
6239.24ft: PUMP SWEEP PUMP SWEEP
6239.99ft: ZERO ALL PUMPS from SideKick sk-05-05-1268
6243.41ft: SURVEY @ 6193 inc 1.2 azi 206.4
6243.41ft: SLIDING SLIDING
6243.41ft: Connection at 6243.4
6250.00ft: IN TALLY: HOLE DEPTH SET TO 6243.4
6250.00ft: ZWOB from SideKick sk-06-03-3103
6252.99ft: ZDiffPressure from SideKick sk-06-03-3103
6273.00ft: MUD WEIGHT 9.50
6273.33ft: MUD VIS 0.56

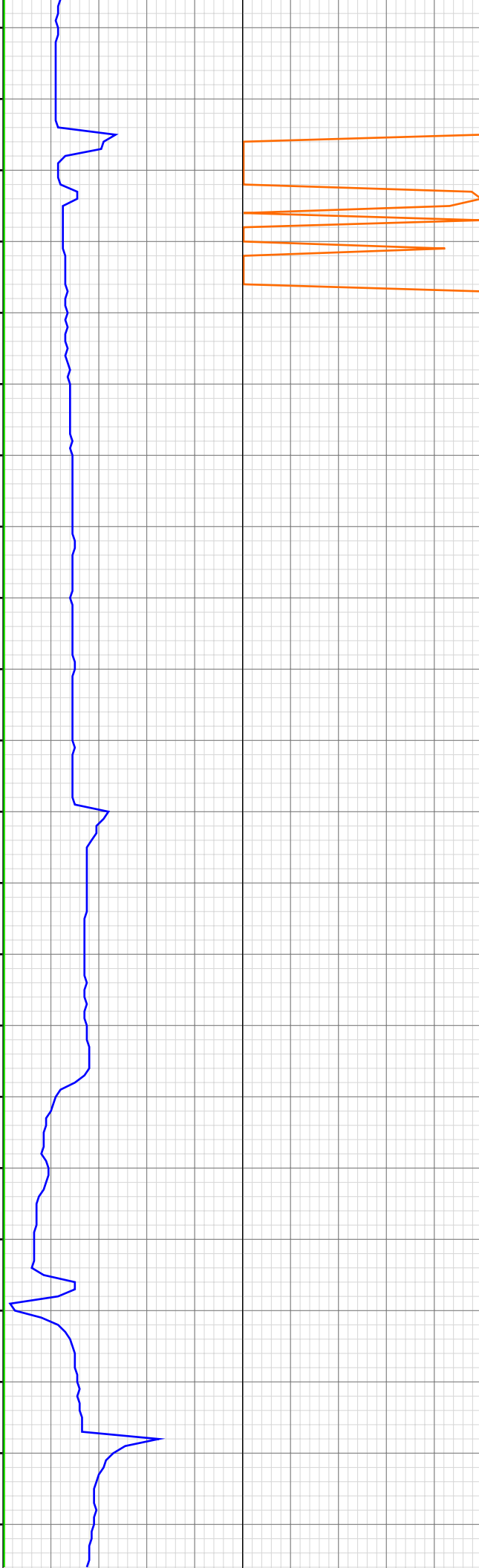
07:04 5880
07:13 5890
07:18 5900
07:23 5910
07:30 5920
07:35 5930
07:40 5940
07:45 5950
07:52 5960
08:09 5970
08:33 5980
08:55 5990
09:10 6000
09:27 6010
09:45 6020
09:57 6030
10:04 6040
10:10 6050
10:18 6060
10:39 6070
10:48 6080
10:56 6090



6291.01ft: ZWOB from SideKick sk-06-03-3103
6291.96ft: ROTATING
6291.96ft: ZDiffPressure from SideKick sk-06-03-3103
6333.99ft: ZWOB from SideKick sk-06-03-3103
6333.99ft: ZDiffPressure from SideKick sk-06-03-3103
6334.84ft: SURVEY @ 6284 INC .9 AZI 196.9 Connection at 6334.9
6335.99ft: IN TALLY: HOLE DEPTH SET TO 6334.9
6335.99ft: ZDiffPressure from SideKick sk-06-03-3103
6335.99ft: ZWOB from SideKick sk-06-03-3103
6335.99ft: MUD VIS 0.55
6335.99ft: MUD WEIGHT 9.50
6336.45ft: SLIDING
6356.00ft: ZDiffPressure from SideKick sk-06-03-3103
6356.00ft: ZWOB from SideKick sk-06-03-3103
6356.17ft: ROTATING
6357.09ft: ROTATING ROTATING
6364.01ft: ZDiffPressure from SideKick sk-06-03-3103
6364.24ft: ZWOB from SideKick sk-06-03-3103
6426.31ft: RIG SERVICE
6426.31ft: Connection at 6426.3
6426.31ft: SURVEY @ 6376 inc .7 azi 236.9 tvd 6217.89 ROTATING
6426.97ft: PUMP SWEEP
6429.00ft: IN TALLY: HOLE DEPTH SET TO 6426.3
6429.00ft: MUD VIS 0.56
6429.00ft: MUD WEIGHT 9.60
6429.00ft: 021TGAS 04100525 SW0.30 HW29.00 - 15 days on
6429.00ft: 008TGAS-Check dryer cable (rig air)
6429.00ft: ZWOB from SideKick sk-06-03-3103
6429.00ft: ZDiffPressure from SideKick sk-06-03-3103
6429.00ft: ZERO ALL PUMPS from SideKick sk-05-05-1268
6464.01ft: MUD VIS 54.00
6464.24ft: MUD WEIGHT 9.65
6494.00ft: ZERO ALL PUMPS from SideKick sk-05-05-1268
6508.96ft: TEST LEL
6510.01ft: HGAS_021: LOCATION1 High LEL Alarm
6510.01ft: HGAS_004: Horn Muted
6510.04ft: LEL OPERATIONAL
6514.01ft: MUD VIS 53.00
6514.01ft: MUD WEIGHT 9.70
6517.85ft: B.O.P DRILL 3 MIN.
6517.85ft: SURVEY @6467' INC 1.1 AZ 237.9 TVD 6308.88'
6517.85ft: S.P.R Connection at 6517.9
6520.01ft: IN TALLY: HOLE DEPTH SET TO 6517.9
6520.01ft: ZWOB from SideKick sk-06-03-3103
6574.02ft: ZERO ALL PUMPS from SideKick sk-05-05-1268
6583.01ft: MUD VIS 54.00
6583.01ft: MUD WEIGHT 9.70
6608.99ft: IN TALLY: HOLE DEPTH SET TO 6609.3
6608.99ft: ZDiffPressure from SideKick sk-06-03-3103
6609.28ft: Connection at 6609.3
6610.60ft: SURVEY @6559' INC 1.4 AZ 233.4 TVD 6400.85' SLIDING
6631.73ft: ROTATING
6635.01ft: ZWOB from SideKick sk-06-03-3103
6635.01ft: ZDiffPressure from SideKick sk-06-03-3103
6645.01ft: ZERO ALL PUMPS from SideKick sk-05-05-1268
6654.00ft: MUD VIS 55.00
6654.00ft: MUD WEIGHT 9.70
6693.83ft: PUMP OUT CELLAR
6700.89ft: Connection at 6700.9
6700.98ft: IN TALLY: HOLE DEPTH SET TO 6700.9
6700.98ft: ZWOB from SideKick sk-06-03-3103
6700.98ft: ZDiffPressure from SideKick sk-06-03-3103
6703.38ft: SURVEY @6650' INC 1.7 AZ 226.6 TVD 6491.82'
6733.99ft: MUD VIS 58.00
6733.99ft: MUD WEIGHT 9.70
6771.00ft: 008TGAS-Check dryer cable (rig air)
6792.42ft: IN TALLY: HOLE DEPTH SET TO 6792.4
6792.42ft: Connection at 6792.4
6792.42ft: SURVEY @6742' INC 2.0 AZ 220.3 TVD 6583.77'
6795.01ft: ZDiffPressure from SideKick sk-06-03-3103
6812.01ft: MUD VIS 55.00
6812.01ft: MUD WEIGHT 9.80
6833.99ft: MUD VIS 58.00

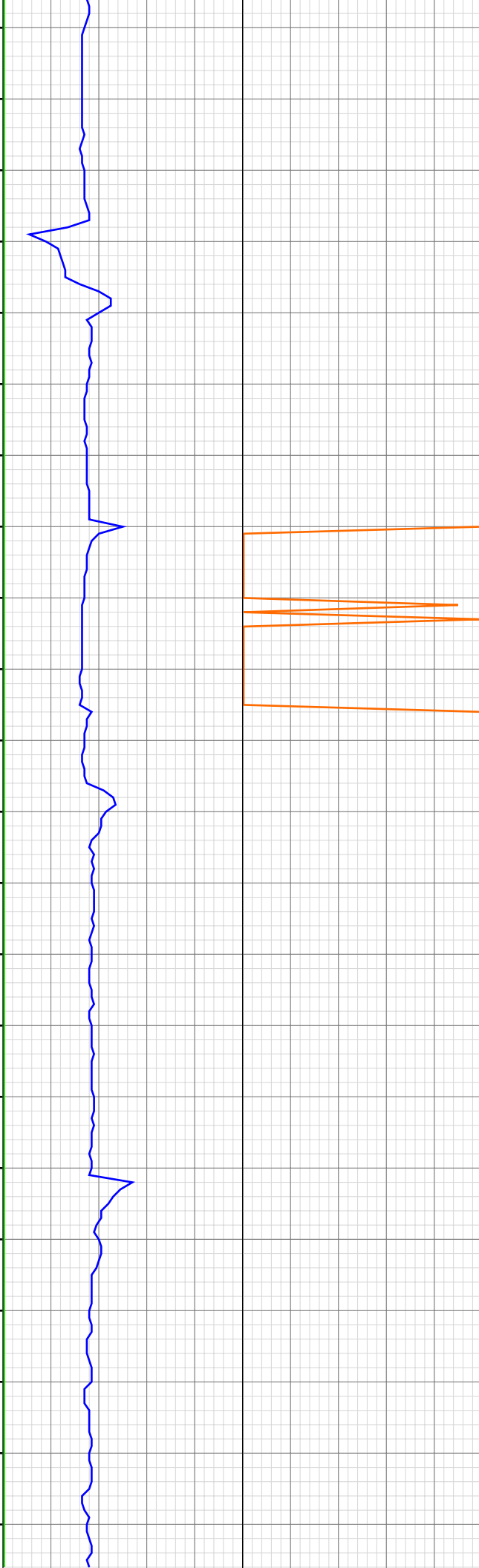


14:55 6320
14:59 6330
15:21 6340
15:40 6350
15:58 6360
16:15 6370
16:23 6380
16:29 6390
16:34 6400
16:41 6410
16:46 6420
17:35 6430
17:47 6440
17:55 6450
18:08 6460
18:19 6470
18:27 6480
18:37 6490
18:48 6500
18:59 6510
19:30 6520
19:37 6530



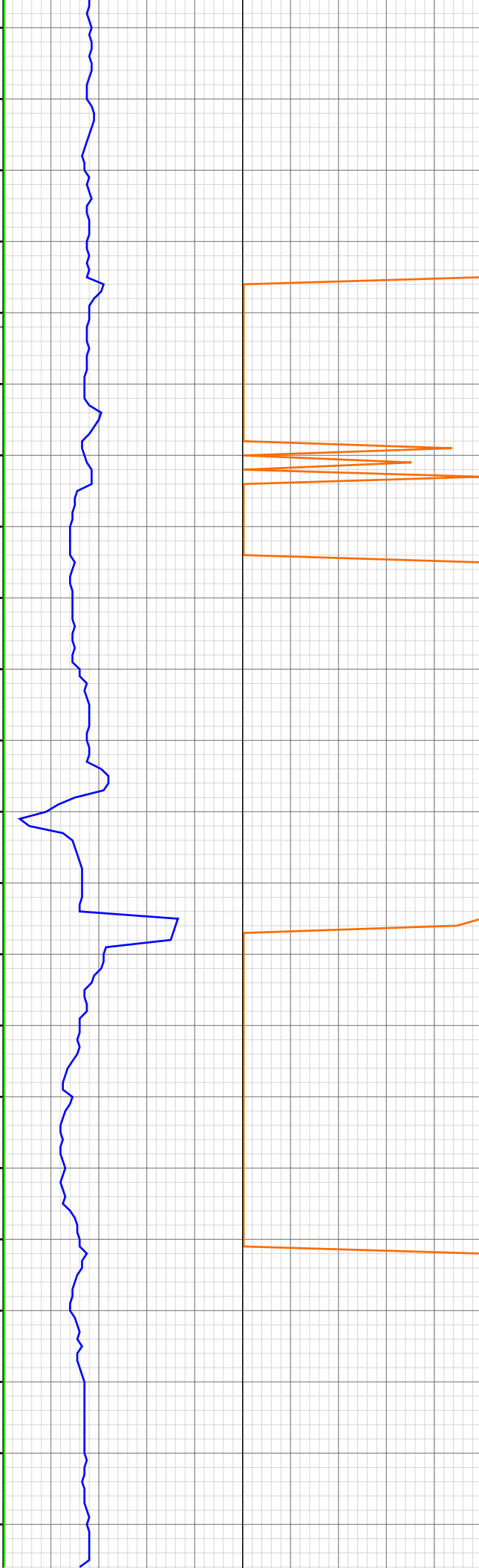
7139.99ft: 008TGAS-Check dryer cable (rig air)
7139.99ft: MUD VIS 58.00
7139.99ft: MUD WEIGHT 9.95
7139.99ft: MUD VIS 56.00
7139.99ft: MUD WEIGHT 10.00
7139.99ft: 012TGAS-Analyzer air pressure low, check air supply.
Standby
7139.99ft: 022TGAS-Trap needs service
7139.99ft: 046TGAS-Analyzer air pressure = zero, check air supply.
Standby
7139.99ft: ZERO ALL PUMPS from SideKick sk-06-03-3103
7139.99ft: BIT DEPTH CHANGED TO 5050.0 FEET
7139.99ft: MUD VIS 58.00
7139.99ft: 008TGAS-Check dryer cable (rig air)
7139.99ft: ZERO ALL PUMPS from SideKick sk-06-03-3103
7139.99ft: BIT DEPTH CHANGED TO 7065.0 FEET
7139.99ft: ZERO ALL PUMPS from SideKick sk-06-03-3103
7139.99ft: MUD VIS 54.00
7139.99ft: MUD WEIGHT 9.95
7139.99ft: ZWOB from DHC
7139.99ft: MUD VIS 63.00
7139.99ft: ZDiffPressure from SideKick sk-06-03-3103
7139.99ft: ZERO ALL PUMPS from SideKick sk-05-05-1268
7139.99ft: FLOW CHECK
7139.99ft: 100 % TIE OFF BB AB BW
7139.99ft: PUMP SLUG
7139.99ft: MUD CK 50VIS/9.85WT
7139.99ft: C.O.M. CHECK
7139.99ft: MUD CK 58VIS/9.95
7139.99ft: FLOW CHECK
7139.99ft: BIT DEPTH CHANGED TO 3512.0 FEET
7139.99ft: NO FLOW
7139.99ft: MUD CK 50VIS/9.95WT
7139.99ft: BIT DEPTH CHANGED TO 0.0 FEET
7139.99ft: FILL PIPE
7139.99ft: CIRCULATE BU@4176
7139.99ft: ZERO ALL PUMPS from SideKick sk-06-03-3103
7139.99ft: ZDIFF from DHC
7139.99ft: PUMPING OUT CELLAR
7139.99ft: MUD WEIGHT 10.00
7139.99ft: 7:25 BRASS BALL
7140.09ft: 003TGAS-Manual flush
7140.09ft: FLOW CHECK
7140.09ft: NO FLOW PUMP SLUG
7140.09ft: COM OK
7140.09ft: FLOW CHECK
7140.09ft: NO FLOW
7140.09ft: OUT
7140.09ft: FILL PIPE
7140.35ft: FLOW CHECK
7140.35ft: ZERO ALL PUMPS from SideKick sk-06-03-3103 PUMP SLUG
7140.35ft: T.O.O.H. DERRICK HAND 100% TIED OFF BB, TB, SC
7140.35ft: 100% TIE OFF BB,AB,SC
7140.35ft: 021TGAS 04100525 SWO.30 HW29.00 - 15 days on
7140.35ft: FLOW CHECK
7140.35ft: 002TGAS-Manual zero
7140.35ft: NO FLOW
7140.35ft: FLOW CHECK @ HWDP
7140.35ft: MUD WEIGHT 9.85
7140.35ft: PUMP OUT CELLAR
7140.35ft: MUD WEIGHT 10.00
7140.55ft: PUMP SWEEP
7141.01ft: ZDiffPressure from SideKick sk-06-03-3103
7141.01ft: ZERO ALL PUMPS from SideKick sk-06-03-3103
7141.01ft: ZDiffPressure from SideKick sk-06-03-3103
7141.01ft: MUD VIS 54.00
7141.01ft: MUD WEIGHT 10.00
7141.01ft: MUD VIS 0.55
7141.01ft: MUD WEIGHT 10.00
7141.01ft: HGAS_021: LOCATION1 High LEL Alarm
7141.01ft: HGAS_004: Horn Muted
7141.01ft: HGAS_023: LOCATION2 Low LEL Alarm
7141.01ft: HGAS_004: Horn Muted
7141.01ft: ZERO ALL PUMPS from SideKick sk-06-03-3103
7141.01ft: MUD VIS 0.56
7141.01ft: MUD WEIGHT 9.90
7141.01ft: 008TGAS-Check dryer cable (rig air)
7141.01ft: ZERO ALL PUMPS from SideKick sk-06-03-3103
7141.01ft: ZERO ALL PUMPS from SideKick sk-06-03-3103
7141.01ft: MUD VIS 0.58
7141.01ft: MUD WEIGHT 10.00
7141.01ft: TRANSFERRED 0.65
7141.01ft: 021TGAS 04100525 SWO.30 HW29.00 - 16 days on
7141.01ft: 008TGAS-Check dryer cable (rig air)

19:44 6540
19:51 6550
19:59 6560
20:05 6570
20:13 6580
20:21 6590
20:27 6600
20:45 6610
20:55 6620
21:10 6630
21:26 6640
21:31 6650
21:36 6660
21:43 6670
21:53 6680
22:00 6690
22:11 6700
22:28 6710
22:37 6720
22:44 6730
22:53 6740
23:00 6750

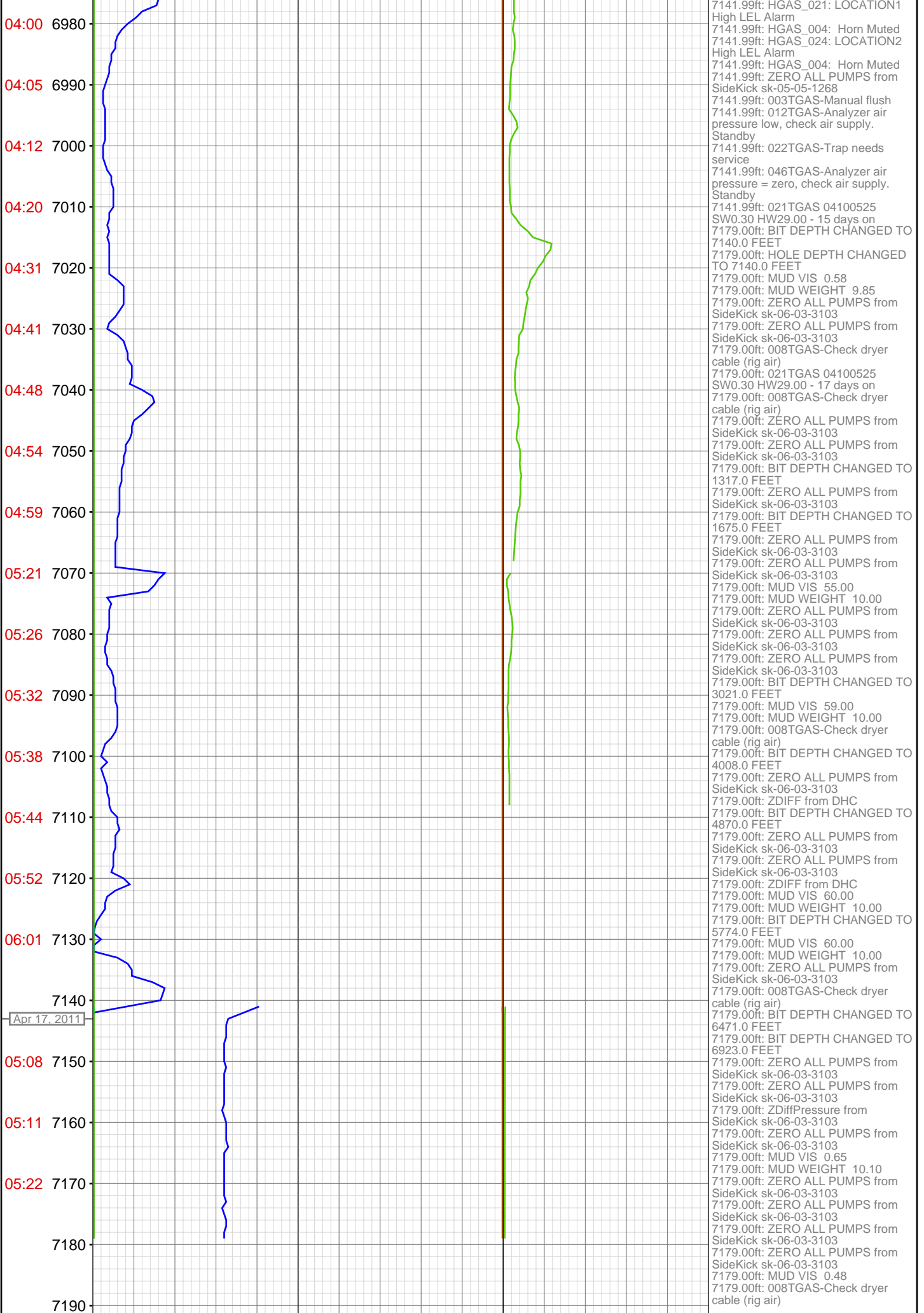


7141.01ft: BIT DEPTH CHANGED TO 1498.0 FEET
7141.01ft: BIT DEPTH CHANGED TO 3512.0 FEET
7141.01ft: MUD VIS 0.58
7141.01ft: MUD WEIGHT 10.00
7141.01ft: ZERO ALL PUMPS from SideKick sk-06-03-3103
7141.01ft: BIT DEPTH CHANGED TO 3601.0 FEET
7141.01ft: ZWOB from SideKick sk-06-03-3103
7141.01ft: ZWOB from SideKick sk-06-03-3103
7141.01ft: ZDiffPressure from SideKick sk-06-03-3103
7141.01ft: MUD VIS 53.00
7141.01ft: MUD WEIGHT 10.00
7141.01ft: ZWOB from SideKick sk-06-03-3103
7141.01ft: ZDiffPressure from SideKick sk-06-03-3103
7141.01ft: ZDiffPressure from SideKick sk-06-03-3103
7141.01ft: ZWOB from SideKick sk-06-03-3103
7141.01ft: BIT DEPTH CHANGED TO 6963.0 FEET
7141.01ft: BIT DEPTH CHANGED TO 3963.0 FEET
7141.01ft: ZWOB from SideKick sk-06-03-3103
7141.01ft: ZDiffPressure from SideKick sk-06-03-3103
7141.01ft: MUD VIS 50.00
7141.01ft: MUD WEIGHT 10.05
7141.01ft: ZWOB from SideKick sk-06-03-3103
7141.01ft: ZDiffPressure from SideKick sk-06-03-3103
7141.01ft: ZWOB from SideKick sk-06-03-3103
7141.01ft: ZDiffPressure from SideKick sk-06-03-3103
7141.01ft: MUD VIS 56.00
7141.01ft: MUD WEIGHT 9.95
7141.01ft: ZDiffPressure from SideKick sk-06-03-3103
7141.01ft: ZDiffPressure from SideKick sk-06-03-3103
7141.01ft: 008TGAS-Check dryer cable (rig air)
7141.01ft: ZWOB from SideKick sk-06-03-3103
7141.01ft: ZDiffPressure from SideKick sk-06-03-3103
7141.01ft: ZDiffPressure from SideKick sk-06-03-3103
7141.01ft: ZWOB from SideKick sk-06-03-3103
7141.01ft: MUD VIS 54.00
7141.01ft: MUD WEIGHT 10.05
7141.01ft: ZDiffPressure from SideKick sk-06-03-3103
7141.01ft: ZDiffPressure from SideKick sk-06-03-3103
7141.01ft: ZWOB from SideKick sk-06-03-3103
7141.01ft: ZWOB from SideKick sk-06-03-3103
7141.01ft: ZDiffPressure from SideKick sk-06-03-3103
7141.01ft: ZDiffPressure from SideKick sk-06-03-3103
7141.01ft: ZWOB from SideKick sk-06-03-3103
7141.01ft: ZWOB from SideKick sk-06-03-3103
7141.01ft: ZDiffPressure from SideKick sk-06-03-3103
7141.01ft: ZDiffPressure from SideKick sk-06-03-3103
7141.01ft: ZWOB from SideKick sk-06-03-3103
7141.01ft: ZWOB from SideKick sk-06-03-3103
7141.01ft: MUD VIS 58.00
7141.01ft: MUD WEIGHT 9.90
7141.01ft: ZWOB from SideKick sk-06-03-3103
7141.01ft: ZDiffPressure from SideKick sk-06-03-3103
7141.01ft: ZWOB from SideKick sk-06-03-3103
7141.01ft: ZDiffPressure from

23:08 6760
23:17 6770
23:27 6780
23:36 6790
23:58 6800
Apr 15, 2011
00:05 6810
00:24 6820
00:51 6830
01:06 6840
01:13 6850
01:21 6860
01:26 6870
01:36 6880
02:00 6890
02:16 6900
02:39 6910
02:54 6920
03:06 6930
03:19 6940
03:26 6950
03:37 6960
03:43 6970



SideKick sk-06-03-3103
7141.01ft: ZWOB from SideKick
sk-06-03-3103
7141.01ft: BIT DEPTH CHANGED TO
5891.0 FEET
7141.01ft: MUD VIS 64.00
7141.01ft: MUD WEIGHT 10.00
7141.01ft: ZWOB from SideKick
sk-06-03-3103
7141.01ft: ZDiffPressure from
SideKick sk-06-03-3103
7141.01ft: ZDiffPressure from
SideKick sk-06-03-3103
7141.01ft: ZDiffPressure from
SideKick sk-06-03-3103
7141.01ft: ZWOB from SideKick
sk-06-03-3103
7141.01ft: ZWOB from SideKick
sk-06-03-3103
7141.01ft: ZDiffPressure from
SideKick sk-06-03-3103
7141.01ft: ZDiffPressure from
SideKick sk-06-03-3103
7141.01ft: BIT DEPTH CHANGED TO
6166.0 FEET
7141.01ft: ZDiffPressure from
SideKick sk-06-03-3103
7141.01ft: MUD VIS 54.00
7141.01ft: MUD WEIGHT 9.90
7141.01ft: ZDiffPressure from
SideKick sk-06-03-3103
7141.01ft: ZWOB from SideKick
sk-06-03-3103
7141.01ft: ZWOB from SideKick
sk-06-03-3103
7141.01ft: ZDiffPressure from
SideKick sk-06-03-3103
7141.01ft: ZDiffPressure from
SideKick sk-06-03-3103
7141.01ft: MUD VIS 59.00
7141.01ft: MUD WEIGHT 9.95
7141.01ft: 008TGAS-Check dryer
cable (rig air)
7141.01ft: ZWOB from SideKick
sk-06-03-3103
7141.01ft: ZDiffPressure from
SideKick sk-06-03-3103
7141.01ft: ZWOB from SideKick
sk-06-03-3103
7141.01ft: ZDiffPressure from
SideKick sk-06-03-3103
7141.01ft: BIT DEPTH CHANGED TO
7807.0 FEET
7141.01ft: BIT DEPTH CHANGED TO
6807.0 FEET
7141.01ft: HOLE DEPTH CHANGED
TO 7140.0 FEET
7141.01ft: ZDiffPressure from
SideKick sk-06-03-3103
7141.01ft: ZWOB from SideKick
sk-06-03-3103
7141.01ft: MUD WEIGHT 9.90
7141.01ft: ZWOB from SideKick
sk-06-03-3103
7141.01ft: ZDiffPressure from
SideKick sk-06-03-3103
7141.01ft: ZWOB from SideKick
sk-06-03-3103
7141.01ft: MUD VIS 62.00
7141.01ft: MUD WEIGHT 9.90
7141.01ft: IN TALLY: HOLE DEPTH
SET TO 7081.9
7141.01ft: ZWOB from SideKick
sk-06-03-3103
7141.01ft: ZDiffPressure from
SideKick sk-06-03-3103
7141.83ft: FLOW CHECK
7141.83ft: TEST LEL
7141.83ft: BIT DEPTH CHANGED TO
7094.1 FEET
7141.83ft: 100 % TIE OFF BB,AB,FR
7141.83ft: C.O.M. CHECK OK
7141.83ft: PUMP SLUG
7141.83ft: PUMP OUT CELLAR
7141.83ft: 100% TIE OFF BB AB BW
7141.83ft: ROTATING RUBBER
7141.83ft: TRANSFERRED 0.00
7141.83ft: PICK UP REAMERS
7141.83ft: ROTATING RUBBER
7141.83ft: FILL PIPE
7141.83ft: ZWOB from SideKick
sk-06-03-3103
7141.83ft: ZDiffPressure from
SideKick sk-06-03-3103
7141.83ft: ZWOB from SideKick
sk-06-03-3103
7141.83ft: PUMP OUT CELLAR
7141.83ft: ZWOB from SideKick
sk-06-03-3103
7141.83ft: ZWOB from SideKick
sk-06-03-3103
7141.83ft: ZDiffPressure from
SideKick sk-06-03-3103
7141.83ft: PUMP OUT CELLAR
7141.83ft: ZWOB from DHC
7141.83ft: ZWOB from SideKick
sk-06-03-3103
7141.99ft: MUD VIS 0.59
7141.99ft: MUD WEIGHT 9.85
7141.99ft: HGAS_020: LOCATION1
Low LEL Alarm



7141.99ft: HGAS_021: LOCATION1
 High LEL Alarm
 7141.99ft: HGAS_004: Horn Muted
 7141.99ft: HGAS_024: LOCATION2
 High LEL Alarm
 7141.99ft: HGAS_004: Horn Muted
 7141.99ft: ZERO ALL PUMPS from
 SideKick sk-05-05-1268
 7141.99ft: 003TGAS-Manual flush
 7141.99ft: 012TGAS-Analyzer air
 pressure low, check air supply.
 Standby
 7141.99ft: 022TGAS-Trap needs
 service
 7141.99ft: 046TGAS-Analyzer air
 pressure = zero, check air supply.
 Standby
 7141.99ft: 021TGAS 04100525
 SWO.30 HW29.00 - 15 days on
 7179.00ft: BIT DEPTH CHANGED TO
 7140.0 FEET
 7179.00ft: HOLE DEPTH CHANGED
 TO 7140.0 FEET
 7179.00ft: MUD VIS 0.58
 7179.00ft: MUD WEIGHT 9.85
 7179.00ft: ZERO ALL PUMPS from
 SideKick sk-06-03-3103
 7179.00ft: ZERO ALL PUMPS from
 SideKick sk-06-03-3103
 7179.00ft: 008TGAS-Check dryer
 cable (rig air)
 7179.00ft: 021TGAS 04100525
 SWO.30 HW29.00 - 17 days on
 7179.00ft: 008TGAS-Check dryer
 cable (rig air)
 7179.00ft: ZERO ALL PUMPS from
 SideKick sk-06-03-3103
 7179.00ft: ZERO ALL PUMPS from
 SideKick sk-06-03-3103
 7179.00ft: BIT DEPTH CHANGED TO
 1317.0 FEET
 7179.00ft: ZERO ALL PUMPS from
 SideKick sk-06-03-3103
 7179.00ft: BIT DEPTH CHANGED TO
 1675.0 FEET
 7179.00ft: ZERO ALL PUMPS from
 SideKick sk-06-03-3103
 7179.00ft: ZERO ALL PUMPS from
 SideKick sk-06-03-3103
 7179.00ft: MUD VIS 55.00
 7179.00ft: MUD WEIGHT 10.00
 7179.00ft: ZERO ALL PUMPS from
 SideKick sk-06-03-3103
 7179.00ft: ZERO ALL PUMPS from
 SideKick sk-06-03-3103
 7179.00ft: ZERO ALL PUMPS from
 SideKick sk-06-03-3103
 7179.00ft: BIT DEPTH CHANGED TO
 3021.0 FEET
 7179.00ft: MUD VIS 59.00
 7179.00ft: MUD WEIGHT 10.00
 7179.00ft: 008TGAS-Check dryer
 cable (rig air)
 7179.00ft: BIT DEPTH CHANGED TO
 4008.0 FEET
 7179.00ft: ZERO ALL PUMPS from
 SideKick sk-06-03-3103
 7179.00ft: ZDIFF from DHC
 7179.00ft: BIT DEPTH CHANGED TO
 4870.0 FEET
 7179.00ft: ZERO ALL PUMPS from
 SideKick sk-06-03-3103
 7179.00ft: ZERO ALL PUMPS from
 SideKick sk-06-03-3103
 7179.00ft: ZDIFF from DHC
 7179.00ft: MUD VIS 60.00
 7179.00ft: MUD WEIGHT 10.00
 7179.00ft: BIT DEPTH CHANGED TO
 5774.0 FEET
 7179.00ft: MUD VIS 60.00
 7179.00ft: MUD WEIGHT 10.00
 7179.00ft: ZERO ALL PUMPS from
 SideKick sk-06-03-3103
 7179.00ft: 008TGAS-Check dryer
 cable (rig air)
 7179.00ft: BIT DEPTH CHANGED TO
 6471.0 FEET
 7179.00ft: BIT DEPTH CHANGED TO
 6923.0 FEET
 7179.00ft: ZERO ALL PUMPS from
 SideKick sk-06-03-3103
 7179.00ft: ZERO ALL PUMPS from
 SideKick sk-06-03-3103
 7179.00ft: ZDiffPressure from
 SideKick sk-06-03-3103
 7179.00ft: ZERO ALL PUMPS from
 SideKick sk-06-03-3103
 7179.00ft: MUD VIS 0.65
 7179.00ft: MUD WEIGHT 10.10
 7179.00ft: ZERO ALL PUMPS from
 SideKick sk-06-03-3103
 7179.00ft: ZERO ALL PUMPS from
 SideKick sk-06-03-3103
 7179.00ft: ZERO ALL PUMPS from
 SideKick sk-06-03-3103
 7179.00ft: ZERO ALL PUMPS from
 SideKick sk-06-03-3103
 7179.00ft: MUD VIS 0.48
 7179.00ft: 008TGAS-Check dryer
 cable (rig air)

