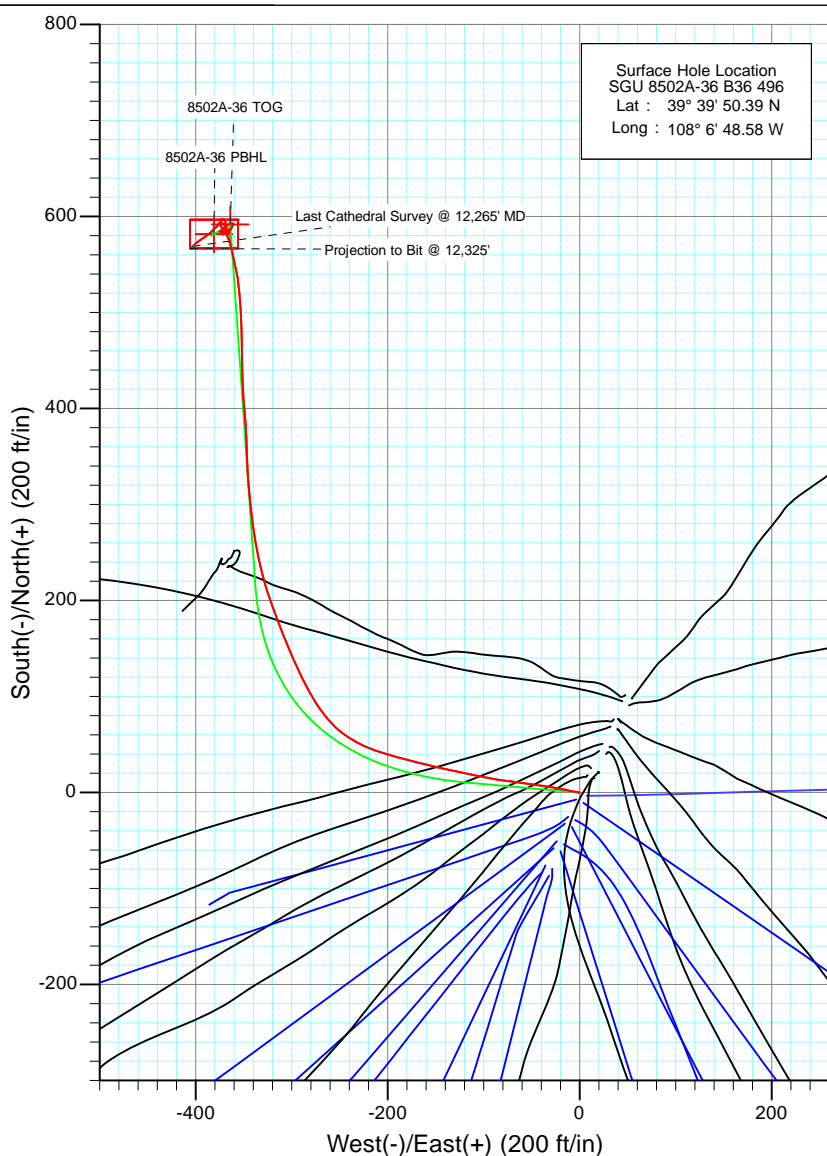
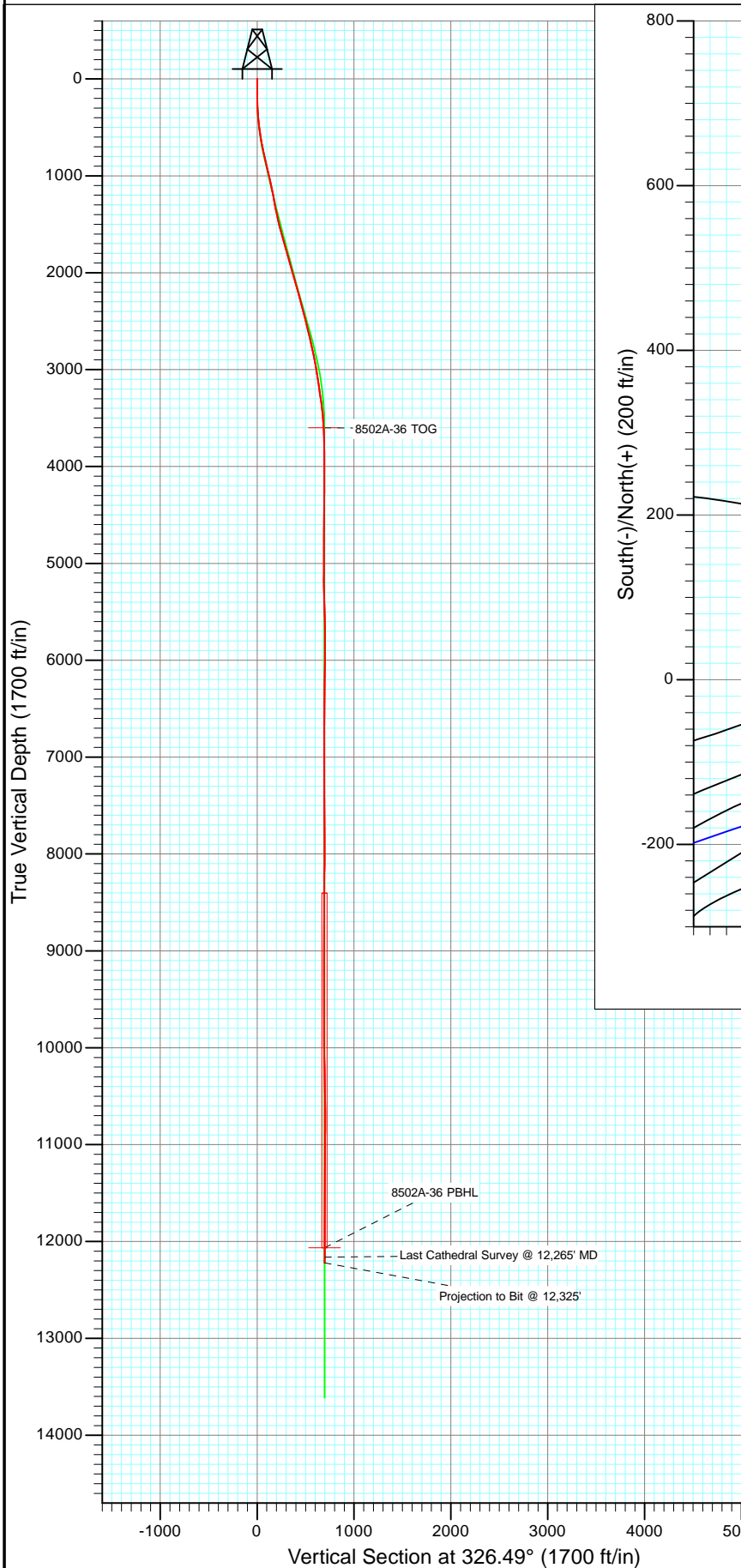




Project: Story Gulch
 Site: S36-T4S-R96W (B36 496)
 Well: SGU 8502A-36 B36 496
 Wellbore: DD
 Design: FINAL



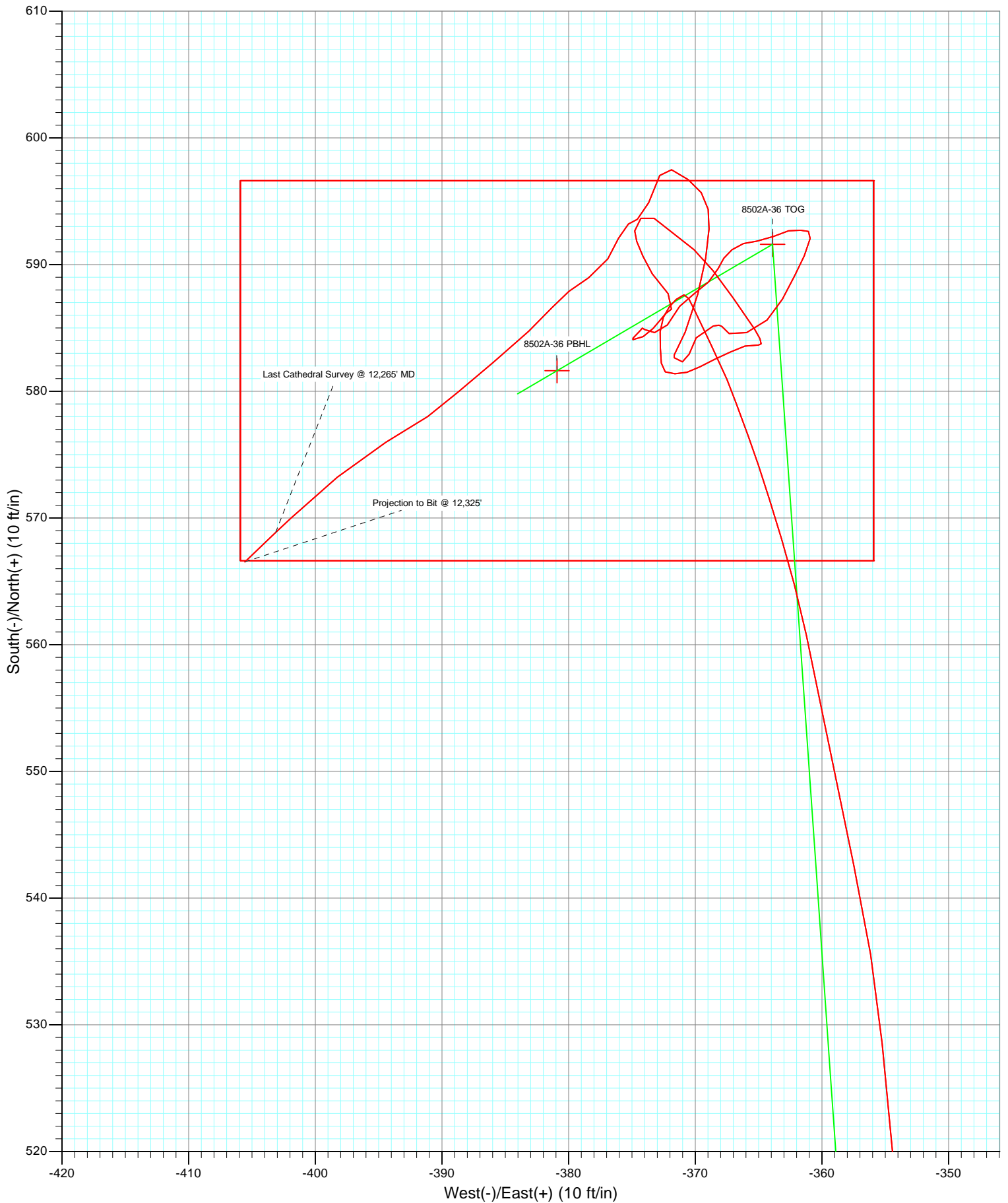
Azimuths to True North
 Magnetic North: 10.47°

Magnetic Field
 Strength: 52389.6nT
 Dip Angle: 65.88°
 Date: 12/12/2010
 Model: IGRF200510

DD SGU 8502A-36 B36 496 105446 (SH), 105557 (MH); LR						
WELL @ 8374.0ft (Patterson 308) North American Datum 1983 Well SGU 8502A-36 B36 496, True North						
Type	Target	Azimuth	Origin	Type	N/S	E/W
User	No Target (Freehand)	326.49	Slot		0.0	0.0
From TVD						
Name	TVD	+N/-S	+E/-W	Latitude	Longitude	
8502A-36 PBHL	3600.0	581.6	-380.9	39° 39' 56.14 N	108° 6' 53.45 W	
	12064.0					



Project: Story Gulch
Site: S36-T4S-R96W (B36 496)
Well: SGU 8502A-36 B36 496
Wellbore: DD
Design: FINAL



Survey Report

Company:	EnCana Oil & Gas (USA) Inc	Local Co-ordinate Reference:	Well SGU 8502A-36 B36 496
Project:	Story Gulch	TVD Reference:	WELL @ 8374.0ft (Patterson 308)
Site:	S36-T4S-R96W (B36 496)	MD Reference:	WELL @ 8374.0ft (Patterson 308)
Well:	SGU 8502A-36 B36 496	North Reference:	True
Wellbore:	DD	Survey Calculation Method:	Minimum Curvature
Design:	DD	Database:	EDM 5000.1 US Multi Users DB

Project	Story Gulch		
Map System:	US State Plane 1983	System Datum:	Mean Sea Level
Geo Datum:	North American Datum 1983		
Map Zone:	Colorado Central Zone		

Site		S36-T4S-R96W (B36 496)			
Site Position:		Northing:	1,677,422.27 ft	Latitude:	39° 39' 51.36 N
From:	Lat/Long	Easting:	2,264,394.80 ft	Longitude:	108° 6' 47.88 W
Position Uncertainty:	0.0 ft	Slot Radius:	13.200 in	Grid Convergence:	-1.65 °

Well	SGU 8502A-36 B36 496					
Well Position	+N/-S	0.0 ft	Northing:	1,677,325.90 ft	Latitude:	39° 39' 50.39 N
	+E/-W	0.0 ft	Easting:	2,264,337.15 ft	Longitude:	108° 6' 48.58 W
Position Uncertainty		0.0 ft	Wellhead Elevation:	ft	Ground Level:	8,352.0 ft

Wellbore	DD				
Magnetics	Model Name	Sample Date	Declination (°)	Dip Angle (°)	Field Strength (nT)
	IGRF200510	12/12/2010	10.47	65.88	52,390

Design	DD				
Audit Notes:					
Version:	1.0	Phase:	ACTUAL	Tie On Depth:	0.0
Vertical Section:	Depth From (TVD)	+N/-S (ft)	+E/-W (ft)	Direction (°)	
	0.0	0.0	0.0	326.49	

Survey Program	Date	12/31/2010			
From (ft)	To (ft)	Survey (Wellbore)	Tool Name	Description	
143.0	12,325.0	Survey #1 (DD)	MWD	Geolink MWD	

Survey										
Measured Depth (ft)	Inclination (°)	Azimuth (°)	Vertical Depth (ft)	+N/-S (ft)	+E/-W (ft)	Vertical Section (ft)	Dogleg Rate (°/100ft)	Build Rate (°/100ft)	Formations / Comments	
0.0	0.00	0.00	0.0	0.0	0.0	0.0	0.00	0.00		
143.0	0.50	267.90	143.0	0.0	-0.6	0.3	0.35	0.35		
174.0	0.90	283.80	174.0	0.0	-1.0	0.6	1.42	1.29		
205.0	1.50	280.50	205.0	0.2	-1.6	1.0	1.95	1.94		
235.0	1.90	282.40	235.0	0.3	-2.5	1.7	1.35	1.33		
266.0	2.90	276.60	265.9	0.5	-3.8	2.5	3.32	3.23		
297.0	3.90	282.40	296.9	0.9	-5.6	3.8	3.41	3.23		
327.0	4.70	281.50	326.8	1.3	-7.8	5.4	2.68	2.67		
357.0	5.80	283.80	356.7	1.9	-10.5	7.4	3.73	3.67		
388.0	6.90	281.20	387.5	2.7	-13.8	9.8	3.67	3.55		
419.0	8.00	279.90	418.2	3.4	-17.8	12.6	3.59	3.55		
450.0	8.90	281.20	448.9	4.2	-22.2	15.8	2.97	2.90		
480.0	9.90	279.60	478.5	5.1	-27.1	19.2	3.44	3.33		

Survey Report

Company:	EnCana Oil & Gas (USA) Inc	Local Co-ordinate Reference:	Well SGU 8502A-36 B36 496
Project:	Story Gulch	TVD Reference:	WELL @ 8374.0ft (Patterson 308)
Site:	S36-T4S-R96W (B36 496)	MD Reference:	WELL @ 8374.0ft (Patterson 308)
Well:	SGU 8502A-36 B36 496	North Reference:	True
Wellbore:	DD	Survey Calculation Method:	Minimum Curvature
Design:	DD	Database:	EDM 5000.1 US Multi Users DB

Survey									
Measured Depth (ft)	Inclination (°)	Azimuth (°)	Vertical Depth (ft)	+N/-S (ft)	+E/-W (ft)	Vertical Section (ft)	Dogleg Rate (°/100ft)	Build Rate (°/100ft)	Formations / Comments
511.0	10.90	278.50	509.0	6.0	-32.6	23.0	3.29	3.23	
542.0	11.80	278.90	539.4	6.9	-38.6	27.1	2.91	2.90	
574.0	12.70	278.10	570.6	7.9	-45.3	31.6	2.86	2.81	
606.0	13.30	278.00	601.8	8.9	-52.5	36.4	1.88	1.87	
638.0	14.00	278.00	632.9	10.0	-59.9	41.4	2.19	2.19	
669.0	14.90	277.80	662.9	11.0	-67.6	46.5	2.91	2.90	
701.0	15.90	277.20	693.8	12.1	-76.0	52.1	3.16	3.12	
733.0	16.70	278.30	724.5	13.4	-84.9	58.0	2.68	2.50	
764.0	17.70	281.00	754.1	14.9	-94.0	64.3	4.13	3.23	
796.0	18.70	281.10	784.5	16.8	-103.8	71.3	3.13	3.12	
859.0	18.90	282.00	844.2	20.9	-123.7	85.7	0.56	0.32	
923.0	18.50	282.90	904.8	25.3	-143.7	100.4	0.77	-0.62	
986.0	18.10	283.70	964.6	29.9	-163.0	114.9	0.75	-0.63	
1,049.0	17.00	285.00	1,024.7	34.6	-181.4	128.9	1.85	-1.75	
1,113.0	14.80	286.00	1,086.2	39.2	-198.3	142.2	3.46	-3.44	
1,176.0	13.30	288.90	1,147.3	43.8	-212.8	154.0	2.63	-2.38	
1,239.0	12.30	295.50	1,208.8	49.0	-225.8	165.5	2.81	-1.59	
1,303.0	12.00	301.50	1,271.3	55.4	-237.6	177.4	2.03	-0.47	
1,366.0	11.80	308.00	1,333.0	62.8	-248.2	189.4	2.15	-0.32	
1,429.0	12.40	316.30	1,394.6	71.7	-258.0	202.2	2.92	0.95	
1,493.0	13.10	323.20	1,457.0	82.5	-267.1	216.2	2.62	1.09	
1,556.0	13.70	327.60	1,518.3	94.5	-275.4	230.8	1.88	0.95	
1,619.0	14.60	331.50	1,579.4	107.8	-283.1	246.2	2.08	1.43	
1,683.0	15.70	334.70	1,641.2	122.7	-290.7	262.8	2.16	1.72	
1,746.0	16.50	336.00	1,701.7	138.6	-298.0	280.0	1.39	1.27	
1,810.0	16.80	337.60	1,763.0	155.4	-305.2	298.1	0.86	0.47	
1,873.0	16.90	339.30	1,823.3	172.4	-311.9	315.9	0.80	0.16	
1,936.0	16.80	339.80	1,883.6	189.5	-318.3	333.7	0.28	-0.16	
2,000.0	17.00	341.60	1,944.8	207.1	-324.4	351.8	0.88	0.31	
2,063.0	16.90	344.50	2,005.1	224.6	-329.8	369.4	1.35	-0.16	
2,127.0	16.40	348.00	2,066.4	242.4	-334.2	386.6	1.75	-0.78	
2,190.0	16.30	350.70	2,126.9	259.9	-337.4	403.0	1.22	-0.16	
2,254.0	16.60	352.90	2,188.2	277.8	-340.0	419.3	1.08	0.47	
2,317.0	16.60	353.00	2,248.6	295.7	-342.2	435.4	0.05	0.00	
2,381.0	17.20	354.00	2,309.9	314.1	-344.3	452.0	1.04	0.94	
2,444.0	17.10	356.90	2,370.1	332.6	-345.8	468.3	1.37	-0.16	
2,507.0	16.60	358.60	2,430.4	350.9	-346.5	483.9	1.11	-0.79	
2,571.0	16.00	357.80	2,491.8	368.8	-347.1	499.2	1.00	-0.94	
2,634.0	15.80	355.40	2,552.4	386.1	-348.1	514.1	1.09	-0.32	
2,698.0	15.50	354.90	2,614.0	403.3	-349.6	529.2	0.51	-0.47	
2,762.0	15.30	356.90	2,675.7	420.2	-350.8	544.0	0.89	-0.31	
2,825.0	14.80	359.30	2,736.5	436.6	-351.3	558.0	1.27	-0.79	
2,889.0	14.70	358.80	2,798.4	452.9	-351.6	571.7	0.25	-0.16	
2,995.0	13.10	358.60	2,901.3	478.3	-352.2	593.2	1.51	-1.51	
3,084.0	11.30	357.60	2,988.3	497.1	-352.8	609.3	2.04	-2.02	
3,175.0	9.80	354.90	3,077.8	513.7	-353.8	623.7	1.74	-1.65	
3,267.0	8.80	354.30	3,168.6	528.5	-355.2	636.8	1.09	-1.09	
3,359.0	9.00	347.60	3,259.5	542.6	-357.5	649.8	1.15	0.22	
3,450.0	8.80	349.10	3,349.4	556.4	-360.3	662.8	0.34	-0.22	
3,542.0	6.60	343.30	3,440.5	568.3	-363.2	674.4	2.53	-2.39	
3,634.0	4.00	340.00	3,532.1	576.4	-365.8	682.6	2.84	-2.83	
3,725.0	2.10	338.40	3,623.0	580.9	-367.5	687.3	2.09	-2.09	
3,817.0	1.70	331.20	3,714.9	583.7	-368.8	690.3	0.51	-0.43	

Survey Report

Company:	EnCana Oil & Gas (USA) Inc	Local Co-ordinate Reference:	Well SGU 8502A-36 B36 496
Project:	Story Gulch	TVD Reference:	WELL @ 8374.0ft (Patterson 308)
Site:	S36-T4S-R96W (B36 496)	MD Reference:	WELL @ 8374.0ft (Patterson 308)
Well:	SGU 8502A-36 B36 496	North Reference:	True
Wellbore:	DD	Survey Calculation Method:	Minimum Curvature
Design:	DD	Database:	EDM 5000.1 US Multi Users DB

Survey									
Measured Depth (ft)	Inclination (°)	Azimuth (°)	Vertical Depth (ft)	+N/-S (ft)	+E/-W (ft)	Vertical Section (ft)	Dogleg Rate (°/100ft)	Build Rate (°/100ft)	Formations / Comments
3,909.0	1.90	337.50	3,806.9	586.3	-370.0	693.1	0.31	0.22	
4,000.0	0.40	251.50	3,897.9	587.6	-370.9	694.7	2.10	-1.65	
4,092.0	0.50	230.50	3,989.9	587.3	-371.5	694.7	0.21	0.11	
4,183.0	0.50	215.90	4,080.9	586.7	-372.0	694.6	0.14	0.00	
4,275.0	0.70	205.30	4,172.9	585.8	-372.5	694.1	0.25	0.22	
4,366.0	0.80	181.70	4,263.9	584.7	-372.8	693.3	0.35	0.11	
4,458.0	0.80	176.00	4,355.8	583.4	-372.8	692.2	0.09	0.00	
4,549.0	0.70	177.70	4,446.8	582.2	-372.7	691.2	0.11	-0.11	
4,641.0	0.40	113.90	4,538.8	581.5	-372.4	690.5	0.69	-0.33	
4,732.0	0.60	92.00	4,629.8	581.4	-371.6	689.9	0.30	0.22	
4,824.0	0.60	75.70	4,721.8	581.5	-370.7	689.5	0.18	0.00	
4,915.0	0.80	60.70	4,812.8	581.9	-369.6	689.3	0.30	0.22	
5,007.0	0.80	65.00	4,904.8	582.5	-368.5	689.1	0.07	0.00	
5,099.0	0.90	64.90	4,996.8	583.1	-367.3	688.9	0.11	0.11	
5,190.0	0.70	71.10	5,087.8	583.6	-366.1	688.7	0.24	-0.22	
5,282.0	0.70	100.50	5,179.8	583.7	-365.0	688.2	0.39	0.00	
5,374.0	2.00	327.50	5,271.8	584.9	-365.3	689.4	2.75	1.41	
5,465.0	1.80	323.40	5,362.7	587.4	-367.0	692.4	0.27	-0.22	
5,557.0	1.50	323.70	5,454.7	589.5	-368.6	695.0	0.33	-0.33	
5,649.0	1.30	311.10	5,546.7	591.2	-370.1	697.2	0.40	-0.22	
5,741.0	1.30	304.90	5,638.6	592.5	-371.7	699.2	0.15	0.00	
5,833.0	1.10	312.10	5,730.6	593.7	-373.2	701.0	0.27	-0.22	
5,924.0	0.90	214.40	5,821.6	593.7	-374.3	701.6	1.66	-0.22	
6,016.0	0.50	190.90	5,913.6	592.7	-374.8	701.1	0.53	-0.43	
6,108.0	0.60	150.60	6,005.6	591.8	-374.6	700.3	0.42	0.11	
6,200.0	1.00	161.70	6,097.6	590.7	-374.1	699.0	0.46	0.43	
6,291.0	1.00	141.60	6,188.6	589.3	-373.4	697.5	0.38	0.00	
6,383.0	1.50	141.60	6,280.5	587.7	-372.1	695.5	0.54	0.54	
6,475.0	0.70	240.10	6,372.5	586.5	-371.9	694.3	1.90	-0.87	
6,566.0	0.10	131.30	6,463.5	586.2	-372.3	694.3	0.81	-0.66	
6,658.0	0.50	232.00	6,555.5	585.9	-372.6	694.2	0.57	0.43	
6,749.0	1.00	215.00	6,646.5	585.0	-373.3	693.8	0.60	0.55	
6,841.0	0.40	273.50	6,738.5	584.3	-374.1	693.7	0.94	-0.65	
6,933.0	0.70	241.60	6,830.5	584.1	-374.9	694.0	0.45	0.33	
7,024.0	0.80	52.40	6,921.5	584.2	-374.9	694.1	1.64	0.11	
7,116.0	0.30	19.30	7,013.5	584.8	-374.3	694.3	0.62	-0.54	
7,207.0	0.10	134.80	7,104.5	585.0	-374.2	694.3	0.39	-0.22	
7,298.0	0.20	113.30	7,195.5	584.9	-374.0	694.1	0.12	0.11	
7,390.0	0.80	105.30	7,287.5	584.6	-373.2	693.5	0.65	0.65	
7,481.0	1.10	27.70	7,378.5	585.2	-372.2	693.5	1.33	0.33	
7,573.0	1.10	39.10	7,470.5	586.7	-371.2	694.1	0.24	0.00	
7,665.0	0.90	61.00	7,562.5	587.7	-370.0	694.4	0.46	-0.22	
7,756.0	0.90	40.90	7,653.4	588.6	-369.0	694.5	0.35	0.00	
7,848.0	0.70	29.10	7,745.4	589.7	-368.2	694.9	0.28	-0.22	
7,939.0	0.50	28.60	7,836.4	590.5	-367.7	695.4	0.22	-0.22	
8,031.0	0.70	54.10	7,928.4	591.2	-367.1	695.6	0.36	0.22	
8,122.0	0.60	71.80	8,019.4	591.7	-366.2	695.5	0.25	-0.11	
8,214.0	0.80	85.80	8,111.4	591.9	-365.1	695.1	0.28	0.22	
8,306.0	0.90	62.90	8,203.4	592.2	-363.8	694.7	0.38	0.11	
8,397.0	0.70	78.30	8,294.4	592.7	-362.6	694.4	0.32	-0.22	
8,489.0	0.50	100.50	8,386.4	592.7	-361.7	693.9	0.33	-0.22	
8,579.0	0.30	94.00	8,476.4	592.6	-361.1	693.5	0.23	-0.22	
8,671.0	0.70	191.40	8,568.4	592.1	-360.9	692.9	0.87	0.43	

Survey Report

Company:	EnCana Oil & Gas (USA) Inc	Local Co-ordinate Reference:	Well SGU 8502A-36 B36 496
Project:	Story Gulch	TVD Reference:	WELL @ 8374.0ft (Patterson 308)
Site:	S36-T4S-R96W (B36 496)	MD Reference:	WELL @ 8374.0ft (Patterson 308)
Well:	SGU 8502A-36 B36 496	North Reference:	True
Wellbore:	DD	Survey Calculation Method:	Minimum Curvature
Design:	DD	Database:	EDM 5000.1 US Multi Users DB

Survey

Measured Depth (ft)	Inclination (°)	Azimuth (°)	Vertical Depth (ft)	+N/-S (ft)	+E/-W (ft)	Vertical Section (ft)	Dogleg Rate (°/100ft)	Build Rate (°/100ft)	Formations / Comments
8,763.0	1.10	203.00	8,660.4	590.7	-361.4	692.0	0.48	0.43	
8,854.0	1.10	208.90	8,751.4	589.1	-362.2	691.1	0.12	0.00	
8,946.0	1.50	206.70	8,843.3	587.3	-363.1	690.1	0.44	0.43	
9,038.0	1.10	229.80	8,935.3	585.6	-364.3	689.4	0.71	-0.43	
9,129.0	1.30	245.60	9,026.3	584.6	-365.9	689.5	0.42	0.22	
9,221.0	0.70	308.40	9,118.3	584.6	-367.3	690.2	1.26	-0.65	
9,313.0	0.30	330.50	9,210.3	585.1	-367.9	691.0	0.47	-0.43	
9,404.0	0.20	231.20	9,301.3	585.2	-368.1	691.2	0.42	-0.11	
9,496.0	0.40	275.00	9,393.3	585.2	-368.6	691.4	0.32	0.22	
9,672.0	0.80	216.80	9,569.3	584.2	-369.9	691.4	0.39	0.23	
9,763.0	1.00	192.40	9,660.3	582.9	-370.5	690.6	0.47	0.22	
9,855.0	0.50	296.80	9,752.3	582.3	-371.0	690.4	1.33	-0.54	
9,947.0	0.40	294.30	9,844.2	582.7	-371.7	691.0	0.11	-0.11	
10,038.0	0.40	69.80	9,935.2	582.9	-371.7	691.2	0.81	0.00	
10,130.0	2.20	18.30	10,027.2	584.7	-370.8	692.2	2.15	1.96	
10,221.0	1.80	18.50	10,118.2	587.7	-369.8	694.2	0.44	-0.44	
10,313.0	1.80	6.20	10,210.1	590.5	-369.2	696.2	0.42	0.00	
10,405.0	1.10	7.60	10,302.1	592.8	-368.9	697.9	0.76	-0.76	
10,496.0	0.90	344.80	10,393.1	594.4	-369.0	699.3	0.48	-0.22	
10,588.0	0.90	330.10	10,485.1	595.7	-369.5	700.7	0.25	0.00	
10,679.0	1.00	300.80	10,576.1	596.7	-370.6	702.1	0.54	0.11	
10,771.0	0.90	300.90	10,668.0	597.5	-371.9	703.5	0.11	-0.11	
10,862.0	1.10	200.60	10,759.0	597.0	-372.8	703.6	1.69	0.22	
10,954.0	1.80	203.30	10,851.0	594.9	-373.7	702.3	0.76	0.76	
11,046.0	0.40	272.30	10,943.0	593.6	-374.6	701.7	1.85	-1.52	
11,137.0	0.70	225.30	11,034.0	593.2	-375.3	701.8	0.57	0.33	
11,229.0	1.00	207.70	11,126.0	592.1	-376.1	701.3	0.43	0.33	
11,321.0	1.30	206.60	11,218.0	590.5	-376.9	700.4	0.33	0.33	
11,412.0	1.50	242.40	11,308.9	589.0	-378.4	700.0	0.97	0.22	
11,504.0	0.90	223.40	11,400.9	587.9	-380.0	700.0	0.77	-0.65	
11,595.0	1.40	227.50	11,491.9	586.6	-381.3	699.6	0.56	0.55	
11,687.0	1.90	222.50	11,583.8	584.7	-383.2	699.1	0.57	0.54	
11,778.0	2.80	233.00	11,674.8	582.3	-385.9	698.6	1.09	0.99	
11,870.0	1.80	224.90	11,766.7	579.9	-388.8	698.2	1.14	-1.09	
11,962.0	2.00	236.80	11,858.6	578.0	-391.1	697.9	0.48	0.22	
12,053.0	2.90	239.70	11,949.6	576.0	-394.4	698.0	1.00	0.99	
12,145.0	3.00	229.00	12,041.4	573.2	-398.3	697.8	0.61	0.11	
12,236.0	3.20	228.00	12,132.3	570.0	-402.0	697.1	0.23	0.22	
12,265.0	3.20	226.20	12,161.3	568.9	-403.1	696.9	0.35	0.00	Last Cathedral Survey @ 12,265' MD
12,325.0	3.20	226.20	12,221.2	566.5	-405.6	696.3	0.00	0.00	Projection to Bit @ 12,325'

Survey Report

Company:	EnCana Oil & Gas (USA) Inc	Local Co-ordinate Reference:	Well SGU 8502A-36 B36 496
Project:	Story Gulch	TVD Reference:	WELL @ 8374.0ft (Patterson 308)
Site:	S36-T4S-R96W (B36 496)	MD Reference:	WELL @ 8374.0ft (Patterson 308)
Well:	SGU 8502A-36 B36 496	North Reference:	True
Wellbore:	DD	Survey Calculation Method:	Minimum Curvature
Design:	DD	Database:	EDM 5000.1 US Multi Users DB

Targets									
Target Name									
- hit/miss target	Dip Angle	Dip Dir.	TVD	+N/-S	+E/-W	Northing	Easting	Latitude	Longitude
- Shape	(°)	(°)	(ft)	(ft)	(ft)	(ft)	(ft)		
8502A-36 PBHL	0.00	0.00	12,064.0	581.6	-380.9	1,677,918.25	2,263,973.12	39° 39' 56.14 N	108° 6' 53.45 W
- survey misses target center by 20.4ft at 12166.5ft MD (12062.9 TVD, 572.5 N, -399.1 E)									
- Rectangle (sides W30.0 H50.0 D0.0)									
8502A-36 TOG	0.00	0.00	3,600.0	591.6	-363.9	1,677,927.72	2,263,990.41	39° 39' 56.24 N	108° 6' 53.23 W
- survey misses target center by 12.0ft at 3702.5ft MD (3600.5 TVD, 580.1 N, -367.2 E)									
- Point									

Survey Annotations				
Measured Depth	Vertical Depth	Local Coordinates		Comment
(ft)	(ft)	+N/-S (ft)	+E/-W (ft)	
12,265.0	12,161.3	568.9	-403.1	Last Cathedral Survey @ 12,265' MD
12,325.0	12,221.2	566.5	-405.6	Projection to Bit @ 12,325'

Checked By: _____ Approved By: _____ Date: _____