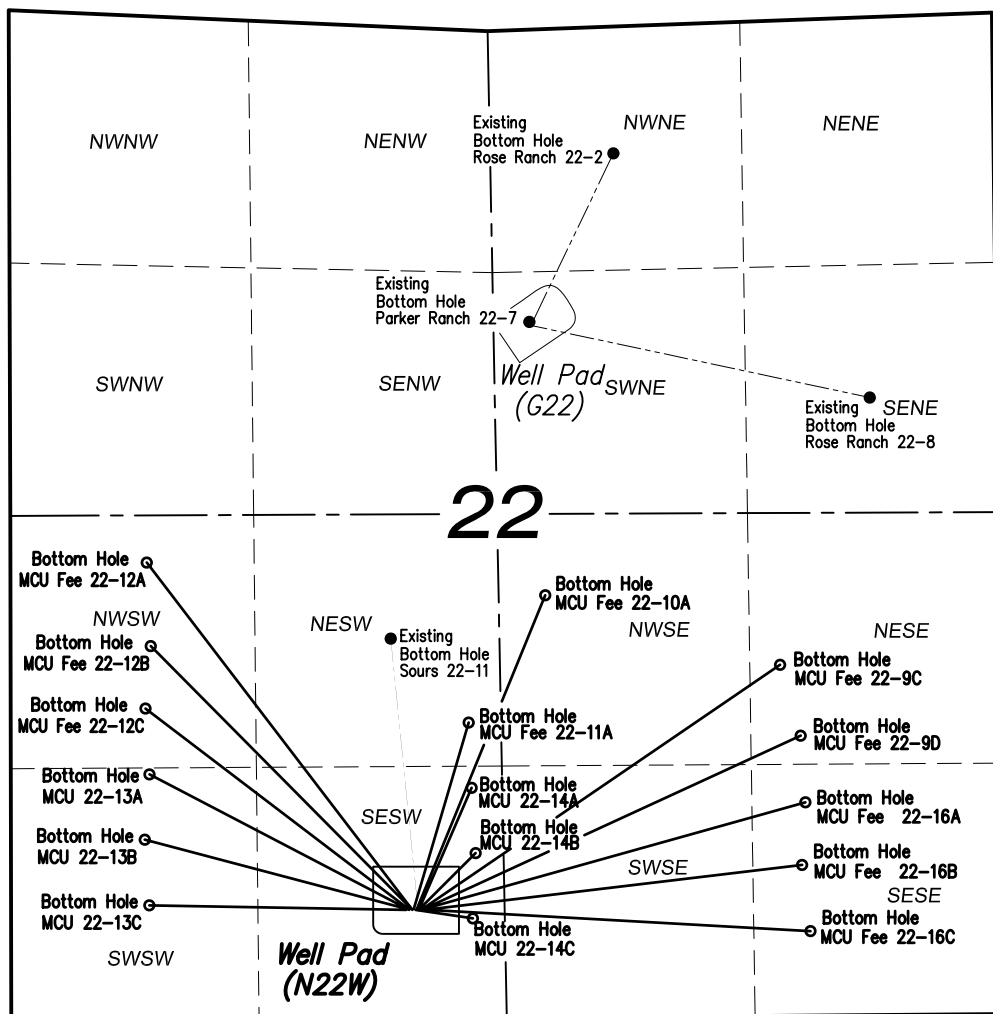
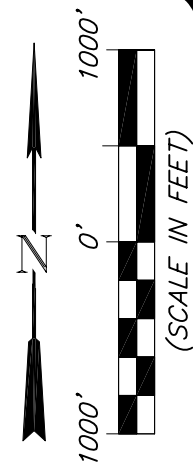


MULTI-WELL PLAN
EnCana Oil & Gas (USA) Inc.
N22W Well Pad
Section 22
T7S, R93W, 6th P.M.



906 Main Street
 Evanston, Wyoming 82930
 Phone No. (307) 789-4545

Multi-Well Plan		Scale: 1" = 1000'	SHEET 1 OF 10
Project No.	11-04-54	Date Surveyed: 5/18/11	
Date Drawn:	8/24/11	Latest Revision Date: 8/26/11	

Encana Oil & Gas (USA) Inc.
WELL PACKAGE COVER SHEET
WELL PAD (N22W)
 SE1/4 SW1/4 of Section 22
 T7S, R93W, 6th P.M.
 Garfield County, Colorado

REVISIONS

REVISION:	DATE:	PAGES:	NOTES:
0	6/01/11	ALL	NOS PACKET
1	8/24/11	ALL	REVISE WELL PAD PER ONSITE- FINAL 11 WELL PACKAGE
2	8/26/11	ALL	FINAL 16 WELL PACKAGE

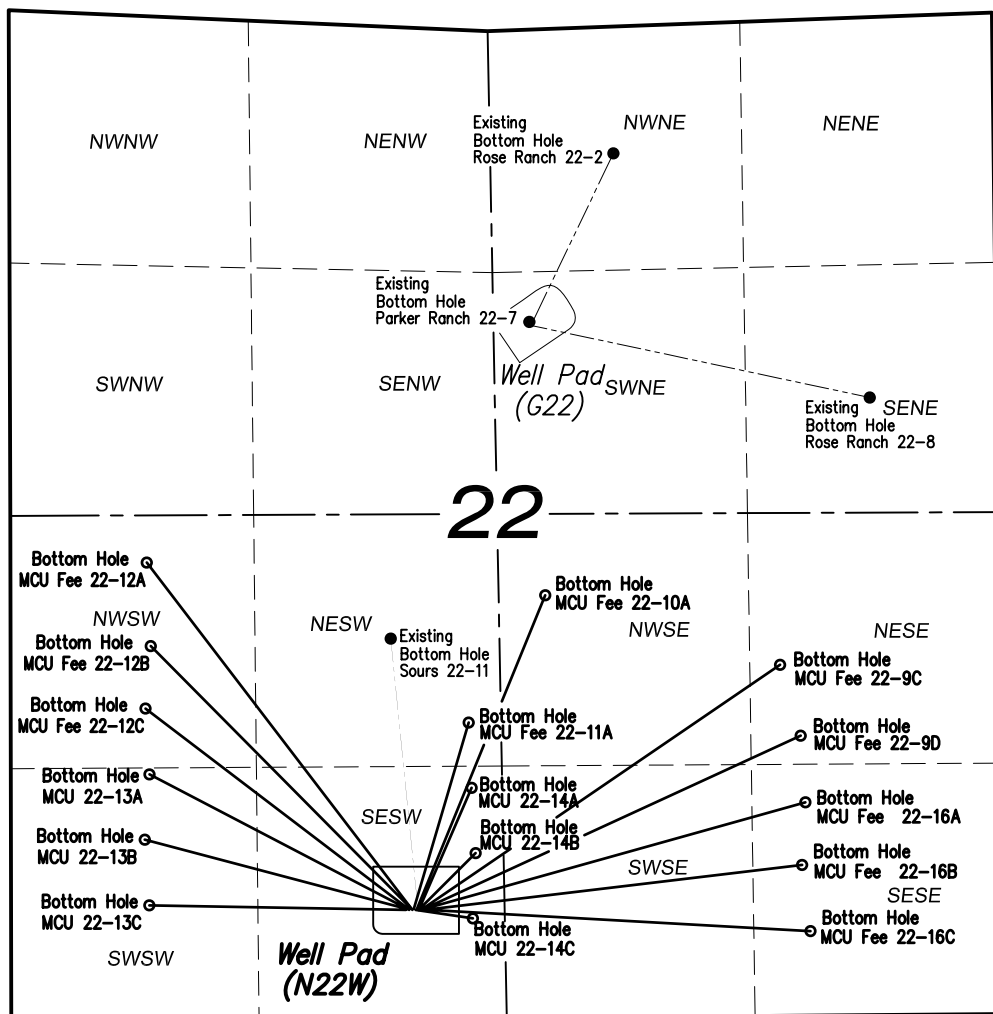
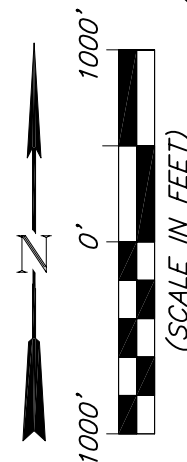


906 Main Street
 Evanston, Wyoming 82930
 Phone No. (307) 789-4545

Revision Summary

Project No.	11-04-54	Date Surveyed:	5/18/11
Date Drawn:	8/26/11	Latest Revision Date:	

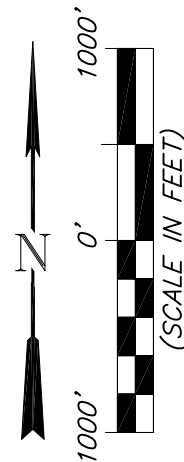
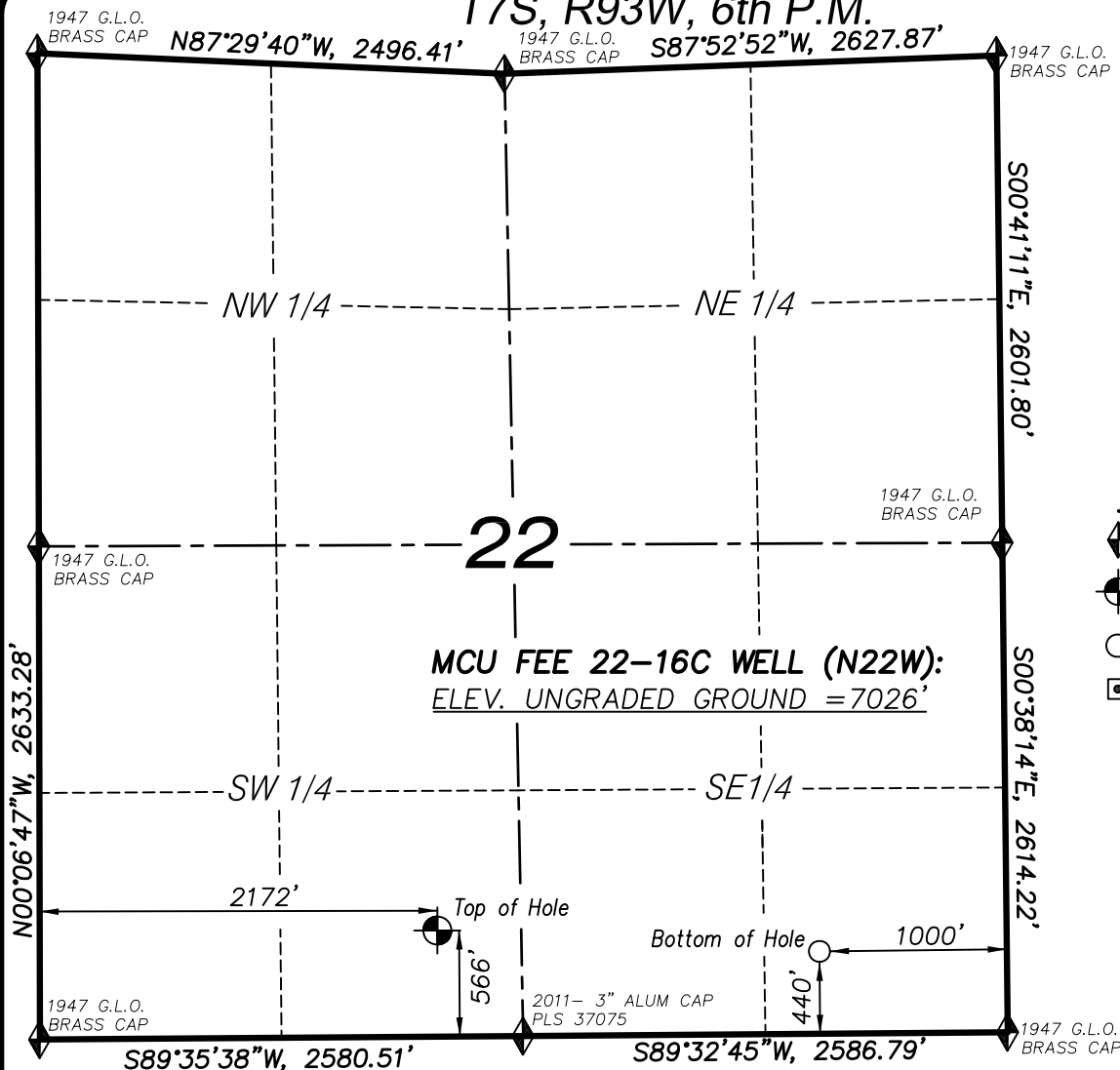
MULTI-WELL PLAN
EnCana Oil & Gas (USA) Inc.
N22W Well Pad
 Section 22
 T7S, R93W, 6th P.M.



906 Main Street
 Evanston, Wyoming 82930
 Phone No. (307) 789-4545

Multi-Well Plan		Scale: 1" = 1000'	SHEET 1 OF 10
Project No.	11-04-54	Date Surveyed: 5/18/11	
Date Drawn:	8/24/11	Latest Revision Date: 8/26/11	

T7S, R93W, 6th P.M.



LEGEND

- ◆ SECTION CORNER LOCATED
- ⊙ SURFACE LOCATION
- BOTTOM HOLE LOCATION
- RECORD LOCATION OF CORNER

MCU FEE 22-16C WELL (N22W)
(WELLHEAD LOCATION) NAD 83
LATITUDE = 39.425656° N
LONGITUDE = 107.761709° W
(BOTTOM HOLE LOCATION) NAD 83
LATITUDE = 39.425355° N
LONGITUDE = 107.754663° W

CERTIFICATE OF SURVEYOR

I, TED TAGGART OF FRUITA, COLORADO HEREBY CERTIFY THAT THIS MAP WAS MADE FROM NOTES TAKEN DURING AN ACTUAL SURVEY MADE BY ME OR UNDER MY DIRECTION FOR ENCANA OIL & GAS (USA) INC. AND THAT THIS LOCATION HAS BEEN STAKED ON THE GROUND AS SHOWN HEREON.



906 Main Street
Evanston, Wyoming 82930
Phone No. (307) 789-4545

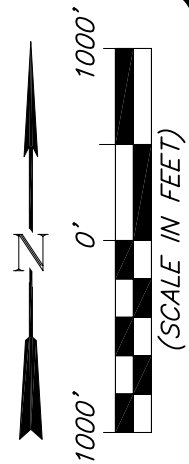
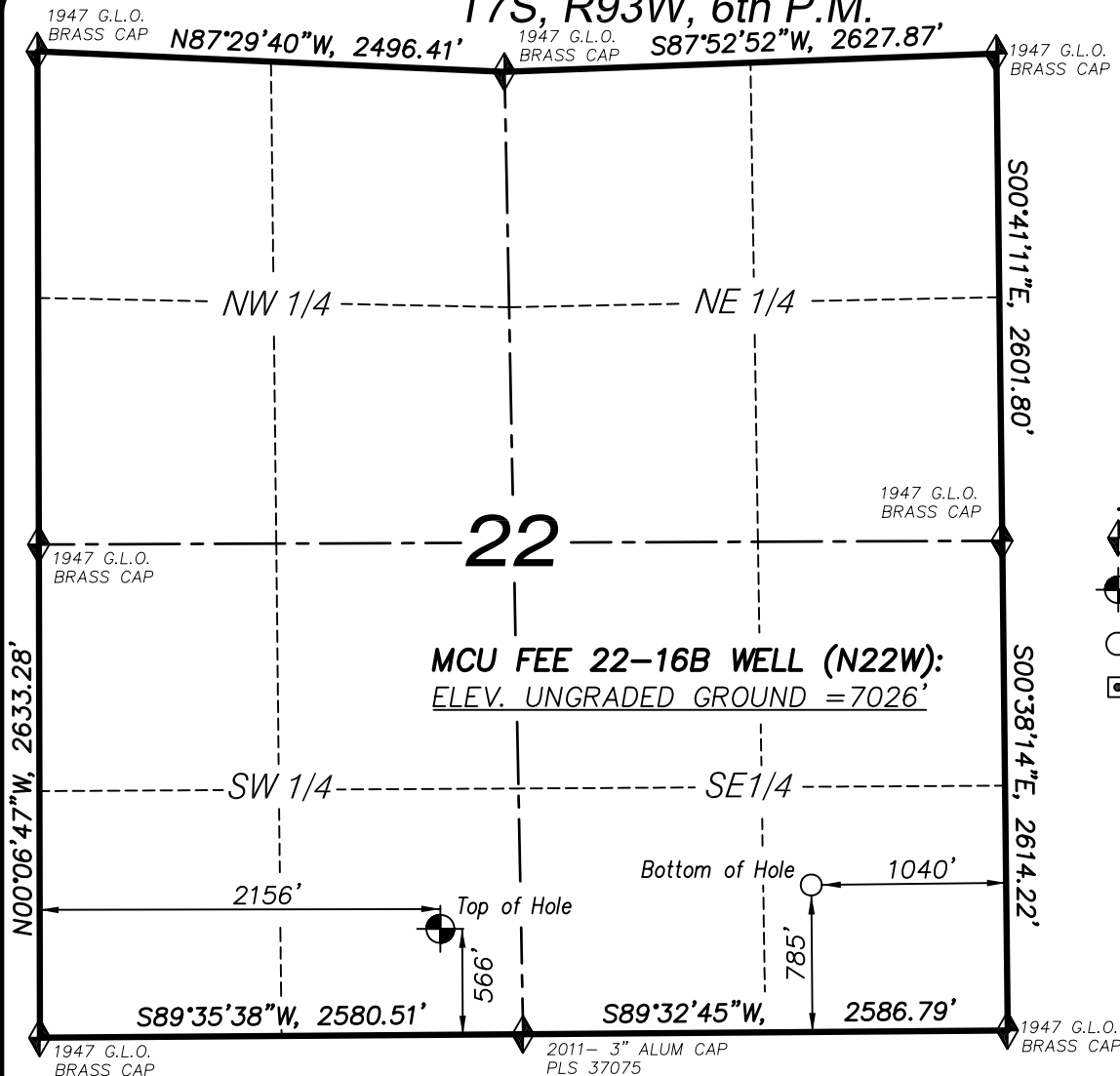
NOTES

1. WELL FOOTAGES ARE MEASURED AT RIGHT ANGLES TO SECTION LINES.
2. BASIS OF BEARING: GEODETIC- BASED ON GPS OBSERVATIONS.
3. ELEVATIONS BASED ON GPS OBSERVATIONS, NAVD 88 (GEOID 03), POST PROCESSED USING NGS OPUS.
4. THE BOTTOM HOLE BEARS S86°48'55"E, 1994' FROM TOP OF HOLE.
5. SEE ADDENDUM TO LEGAL PLAT (SHEET 1q) FOR VISIBLE IMPROVEMENTS WITHIN 400 FEET OF THE PROPOSED OIL & GAS LOCATION.
6. CONTROL FOR SURVEY WAS ESTABLISHED USING DIFFERENTIALLY CORRECTED GPS FROM AN OPUS BASED CONTROL NETWORK. WELL LOCATION WAS ESTABLISHED USING NON-GPS CONVENTIONAL METHODS, THEREFORE NO PDOP READING WAS TAKEN.

MAP to ACCOMPANY
APPLICATION for PERMIT to DRILL
Encana Oil & Gas (USA) Inc.
MCU Fee 22-16C (N22W) Well
SE 1/4 SW 1/4, SECTION 22
T7S, R93W, 6th P.M.
GARFIELD COUNTY, COLORADO

Location Plat		Scale: 1" = 1000'	SHEET 1a OF 10
Project No.	11-04-54	Date Surveyed: 5/18/11	
Date Drawn:	8/24/11	Latest Revision Date: 8/26/11	

T7S, R93W, 6th P.M.



LEGEND

- ◆ SECTION CORNER LOCATED
- ⊙ SURFACE LOCATION
- BOTTOM HOLE LOCATION
- RECORD LOCATION OF CORNER

MCU FEE 22-16B WELL (N22W)
(WELLHEAD LOCATION) NAD 83
LATITUDE = 39.425656° N
LONGITUDE = 107.761767° W
(BOTTOM HOLE LOCATION) NAD 83
LATITUDE = 39.426301° N
LONGITUDE = 107.754818° W

CERTIFICATE OF SURVEYOR

I, TED TAGGART OF FRUITA, COLORADO HEREBY CERTIFY THAT THIS MAP WAS MADE FROM NOTES TAKEN DURING AN ACTUAL SURVEY MADE BY ME OR UNDER MY DIRECTION FOR ENCANA OIL & GAS (USA) INC. AND THAT THIS LOCATION HAS BEEN STAKED ON THE GROUND AS SHOWN HEREON.



NOTES

1. WELL FOOTAGES ARE MEASURED AT RIGHT ANGLES TO SECTION LINES.
2. BASIS OF BEARING: GEODETIC- BASED ON GPS OBSERVATIONS.
3. ELEVATIONS BASED ON GPS OBSERVATIONS, NAVD 88 (GEOID 03), POST PROCESSED USING NGS OPUS.
4. THE BOTTOM HOLE BEARS N83°12'27"E, 1978' FROM TOP OF HOLE.
5. SEE ADDENDUM TO LEGAL PLAT (SHEET 1q) FOR VISIBLE IMPROVEMENTS WITHIN 400 FEET OF THE PROPOSED OIL & GAS LOCATION.
6. CONTROL FOR SURVEY WAS ESTABLISHED USING DIFFERENTIALLY CORRECTED GPS FROM AN OPUS BASED CONTROL NETWORK. WELL LOCATION WAS ESTABLISHED USING NON-GPS CONVENTIONAL METHODS, THEREFORE NO PDOP READING WAS TAKEN.

MAP to ACCOMPANY

APPLICATION for PERMIT to DRILL
Encana Oil & Gas (USA) Inc.
MCU Fee 22-16B (N22W) Well

SE 1/4 SW 1/4, SECTION 22

T7S, R93W, 6th P.M.

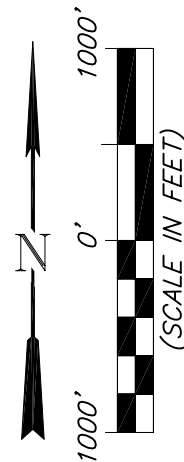
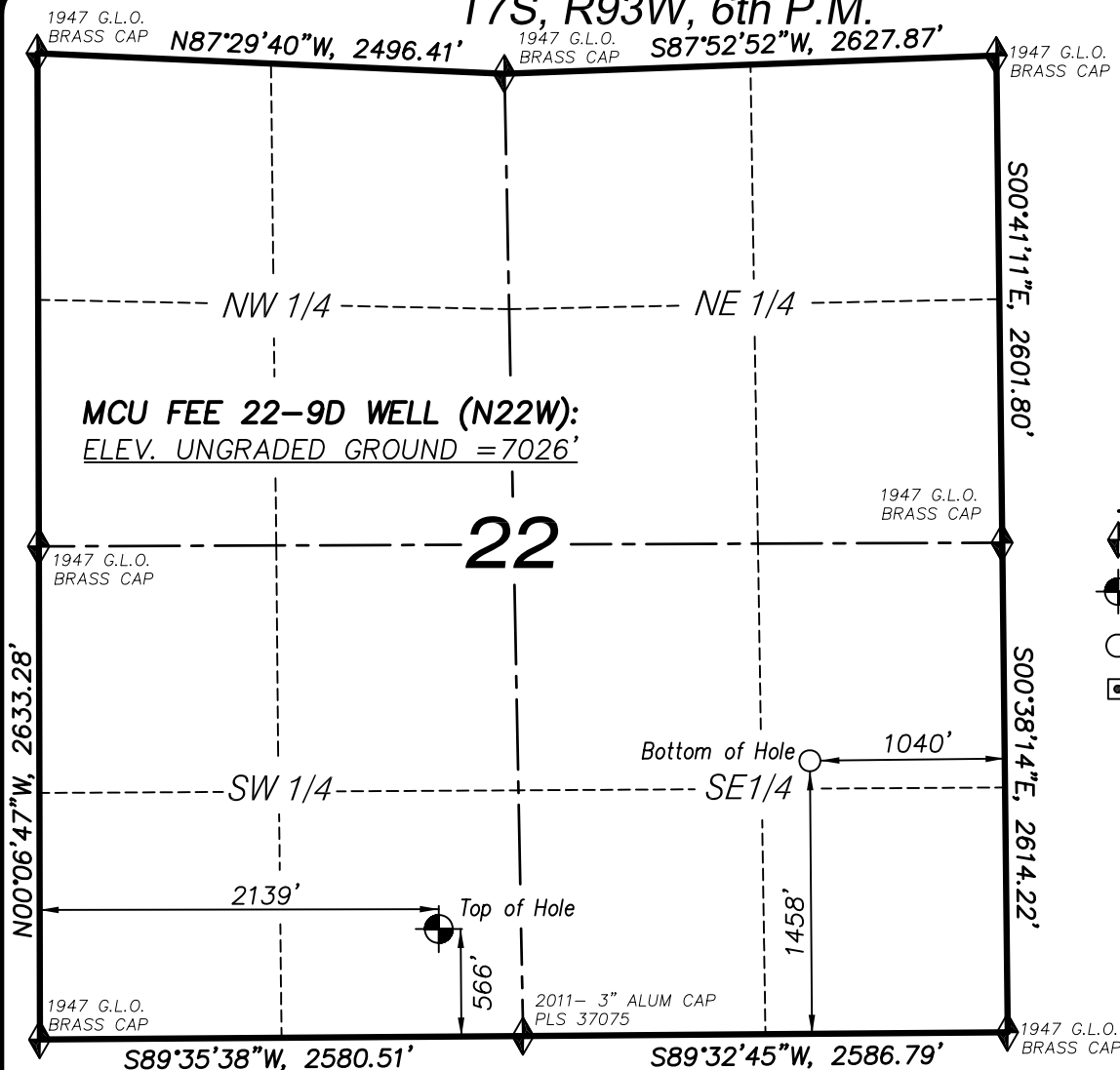
GARFIELD COUNTY, COLORADO

Location Plat		Scale: 1" = 1000'	SHEET 1b OF 10
Project No.	11-04-54	Date Surveyed: 5/18/11	
Date Drawn:	8/24/11	Latest Revision Date: 8/26/11	



906 Main Street
Evanston, Wyoming 82930
Phone No. (307) 789-4545

T7S, R93W, 6th P.M.



LEGEND

- ◆ SECTION CORNER LOCATED
- ⊙ SURFACE LOCATION
- BOTTOM HOLE LOCATION
- RECORD LOCATION OF CORNER

MCU FEE 22-9D WELL (N22W)
(WELLHEAD LOCATION) NAD 83
LATITUDE = 39.425656° N
LONGITUDE = 107.761825° W
(BOTTOM HOLE LOCATION) NAD 83
LATITUDE = 39.428148° N
LONGITUDE = 107.754846° W

CERTIFICATE OF SURVEYOR

I, TED TAGGART OF FRUITA, COLORADO HEREBY CERTIFY THAT THIS MAP WAS MADE FROM NOTES TAKEN DURING AN ACTUAL SURVEY MADE BY ME OR UNDER MY DIRECTION FOR ENCANA OIL & GAS (USA) INC. AND THAT THIS LOCATION HAS BEEN STAKED ON THE GROUND AS SHOWN HEREON.



906 Main Street
Evanston, Wyoming 82930
Phone No. (307) 789-4545

NOTES

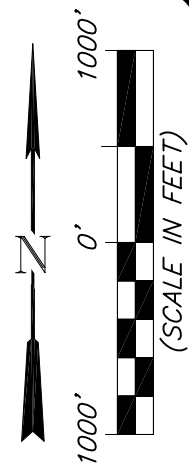
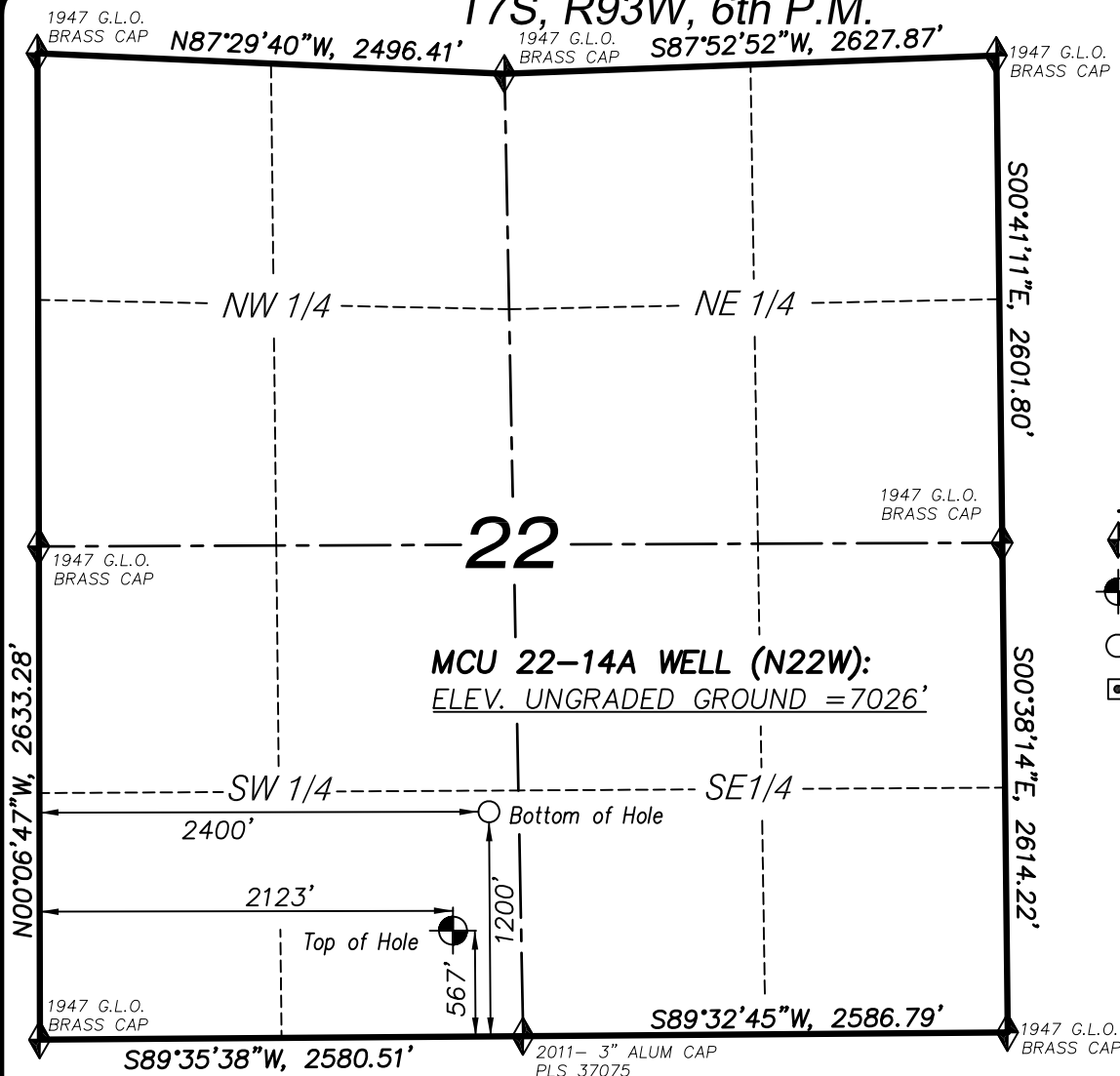
1. WELL FOOTAGES ARE MEASURED AT RIGHT ANGLES TO SECTION LINES.
2. BASIS OF BEARING: GEODETIC- BASED ON GPS OBSERVATIONS.
3. ELEVATIONS BASED ON GPS OBSERVATIONS, NAVD 88 (GEOID 03), POST PROCESSED USING NGS OPUS.
4. THE BOTTOM HOLE BEARS N65°18'41"E, 2171' FROM TOP OF HOLE.
5. SEE ADDENDUM TO LEGAL PLAT (SHEET 1q) FOR VISIBLE IMPROVEMENTS WITHIN 400 FEET OF THE PROPOSED OIL & GAS LOCATION.
6. CONTROL FOR SURVEY WAS ESTABLISHED USING DIFFERENTIALLY CORRECTED GPS FROM AN OPUS BASED CONTROL NETWORK. WELL LOCATION WAS ESTABLISHED USING NON-GPS CONVENTIONAL METHODS, THEREFORE NO PDOP READING WAS TAKEN.

MAP to ACCOMPANY
APPLICATION for PERMIT to DRILL
Encana Oil & Gas (USA) Inc.
MCU Fee 22-9D (N22W) Well

SE1/4 SW1/4, SECTION 22
T7S, R93W, 6th P.M.
GARFIELD COUNTY, COLORADO

Location Plat		Scale: 1" = 1000'	SHEET 1c OF 10
Project No.	11-04-54	Date Surveyed: 5/18/11	
Date Drawn:	8/24/11	Latest Revision Date: 8/26/11	

T7S, R93W, 6th P.M.



LEGEND

- ◆ SECTION CORNER LOCATED
- ⊙ SURFACE LOCATION
- BOTTOM HOLE LOCATION
- RECORD LOCATION OF CORNER

MCU 22-14A WELL (N22W)
(WELLHEAD LOCATION) NAD 83
LATITUDE = 39.425656° N
LONGITUDE = 107.761884° W
(BOTTOM HOLE LOCATION) NAD 83
LATITUDE = 39.427400° N
LONGITUDE = 107.760909° W

CERTIFICATE OF SURVEYOR

I, TED TAGGART OF FRUITA, COLORADO HEREBY CERTIFY THAT THIS MAP WAS MADE FROM NOTES TAKEN DURING AN ACTUAL SURVEY MADE BY ME OR UNDER MY DIRECTION FOR ENCANA OIL & GAS (USA) INC. AND THAT THIS LOCATION HAS BEEN STAKED ON THE GROUND AS SHOWN HEREON.



NOTES

1. WELL FOOTAGES ARE MEASURED AT RIGHT ANGLES TO SECTION LINES.
2. BASIS OF BEARING: GEODETIC- BASED ON GPS OBSERVATIONS.
3. ELEVATIONS BASED ON GPS OBSERVATIONS, NAVD 88 (GEOID 03), POST PROCESSED USING NGS OPUS.
4. THE BOTTOM HOLE BEARS N23°27'45"E, 693' FROM TOP OF HOLE.
5. SEE ADDENDUM TO LEGAL PLAT (SHEET 1q) FOR VISIBLE IMPROVEMENTS WITHIN 400 FEET OF THE PROPOSED OIL & GAS LOCATION.
6. CONTROL FOR SURVEY WAS ESTABLISHED USING DIFFERENTIALLY CORRECTED GPS FROM AN OPUS BASED CONTROL NETWORK. WELL LOCATION WAS ESTABLISHED USING NON-GPS CONVENTIONAL METHODS, THEREFORE NO PDOP READING WAS TAKEN.

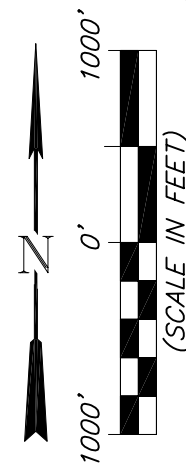
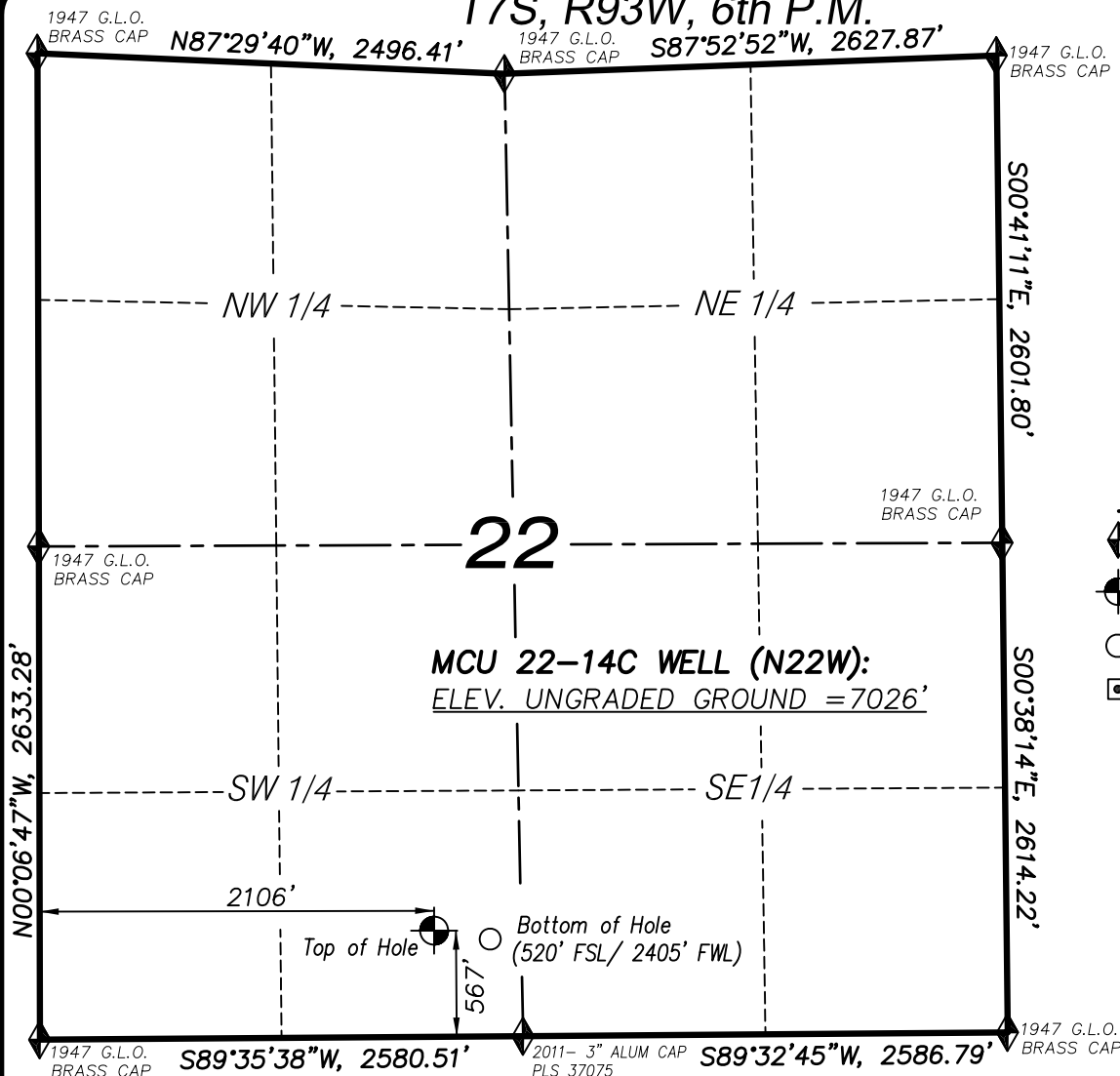
MAP to ACCOMPANY
APPLICATION for PERMIT to DRILL
Encana Oil & Gas (USA) Inc.
MCU 22-14A (N22W) Well
SE 1/4 SW 1/4, SECTION 22
T7S, R93W, 6th P.M.
GARFIELD COUNTY, COLORADO

Location Plat		Scale: 1" = 1000'	SHEET 1d OF 10
Project No.	11-04-54	Date Surveyed: 5/18/11	
Date Drawn:	8/24/11	Latest Revision Date: 8/26/11	



906 Main Street
Evanston, Wyoming 82930
Phone No. (307) 789-4545

T7S, R93W, 6th P.M.



LEGEND

- ◆ SECTION CORNER LOCATED
- ⊕ SURFACE LOCATION
- BOTTOM HOLE LOCATION
- RECORD LOCATION OF CORNER

MCU 22-14C WELL (N22W)
 (WELLHEAD LOCATION) NAD 83
 LATITUDE = 39.425656° N
 LONGITUDE = 107.761942° W
 (BOTTOM HOLE LOCATION) NAD 83
 LATITUDE = 39.425534° N
 LONGITUDE = 107.760885° W

CERTIFICATE OF SURVEYOR

I, TED TAGGART OF FRUITA, COLORADO HEREBY CERTIFY THAT THIS MAP WAS MADE FROM NOTES TAKEN DURING AN ACTUAL SURVEY MADE BY ME OR UNDER MY DIRECTION FOR ENCANA OIL & GAS (USA) INC. AND THAT THIS LOCATION HAS BEEN STAKED ON THE GROUND AS SHOWN HEREON.



906 Main Street
 Evanston, Wyoming 82930
 Phone No. (307) 789-4545

NOTES

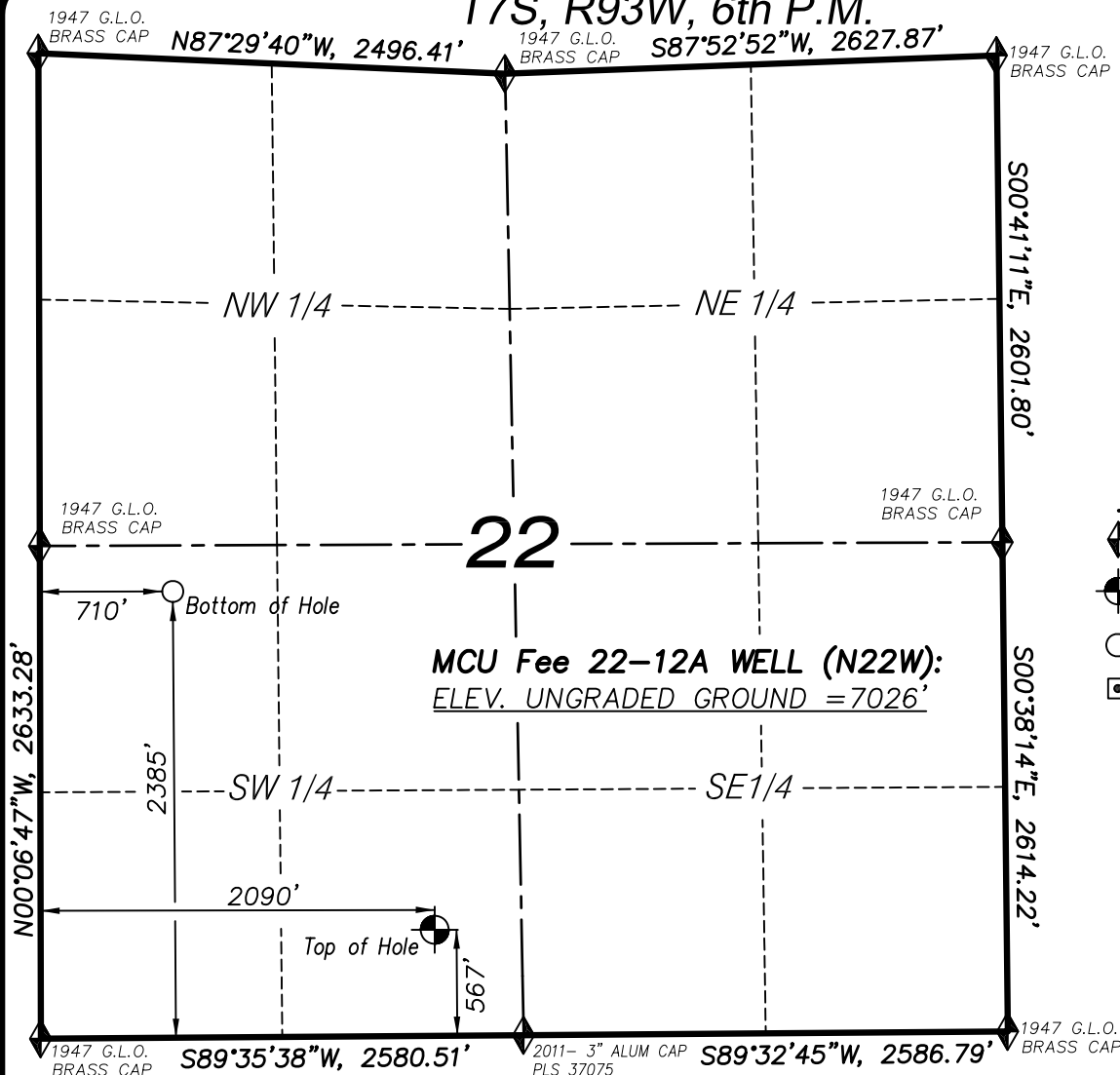
1. WELL FOOTAGES ARE MEASURED AT RIGHT ANGLES TO SECTION LINES.
2. BASIS OF BEARING: GEODETIC- BASED ON GPS OBSERVATIONS.
3. ELEVATIONS BASED ON GPS OBSERVATIONS, NAVD 88 (GEOID 03), POST PROCESSED USING NGS OPUS.
4. THE BOTTOM HOLE BEARS S81°30'43"E, 302' FROM TOP OF HOLE.
5. SEE ADDENDUM TO LEGAL PLAT (SHEET 1q) FOR VISIBLE IMPROVEMENTS WITHIN 400 FEET OF THE PROPOSED OIL & GAS LOCATION.
6. CONTROL FOR SURVEY WAS ESTABLISHED USING DIFFERENTIALLY CORRECTED GPS FROM AN OPUS BASED CONTROL NETWORK. WELL LOCATION WAS ESTABLISHED USING NON-GPS CONVENTIONAL METHODS, THEREFORE NO PDOP READING WAS TAKEN.

MAP to ACCOMPANY
 APPLICATION for PERMIT to DRILL
Encana Oil & Gas (USA) Inc.
MCU 22-14C (N22W) Well

SE1/4 SW1/4, SECTION 22
 T7S, R93W, 6th P.M.
 GARFIELD COUNTY, COLORADO

Location Plat		Scale: 1" = 1000'	SHEET 1e OF 10
Project No.	11-04-54	Date Surveyed: 5/18/11	
Date Drawn:	8/24/11	Latest Revision Date: 8/26/11	

T7S, R93W, 6th P.M.



LEGEND

- ◆ SECTION CORNER LOCATED
- SURFACE LOCATION
- BOTTOM HOLE LOCATION
- RECORD LOCATION OF CORNER

MCU Fee 22-12A WELL (N22W)
(WELLHEAD LOCATION) NAD 83
LATITUDE = 39.425656° N
LONGITUDE = 107.762000° W
(BOTTOM HOLE LOCATION) NAD 83
LATITUDE = 39.430617° N
LONGITUDE = 107.766901° W

CERTIFICATE OF SURVEYOR

I, TED TAGGART OF FRUITA, COLORADO HEREBY CERTIFY THAT THIS MAP WAS MADE FROM NOTES TAKEN DURING AN ACTUAL SURVEY MADE BY ME OR UNDER MY DIRECTION FOR ENCANA OIL & GAS (USA) INC. AND THAT THIS LOCATION HAS BEEN STAKED ON THE GROUND AS SHOWN HEREON.



NOTES

1. WELL FOOTAGES ARE MEASURED AT RIGHT ANGLES TO SECTION LINES.
2. BASIS OF BEARING: GEODETIC- BASED ON GPS OBSERVATIONS.
3. ELEVATIONS BASED ON GPS OBSERVATIONS, NAVD 88 (GEOID 03), POST PROCESSED USING NGS OPUS.
4. THE BOTTOM HOLE BEARS N37°25'02"W, 2277' FROM TOP OF HOLE.
5. SEE ADDENDUM TO LEGAL PLAT (SHEET 1q) FOR VISIBLE IMPROVEMENTS WITHIN 400 FEET OF THE PROPOSED OIL & GAS LOCATION.
6. CONTROL FOR SURVEY WAS ESTABLISHED USING DIFFERENTIALLY CORRECTED GPS FROM AN OPUS BASED CONTROL NETWORK. WELL LOCATION WAS ESTABLISHED USING NON-GPS CONVENTIONAL METHODS, THEREFORE NO PDOP READING WAS TAKEN.

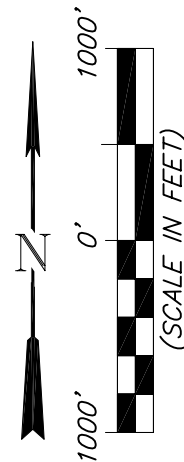
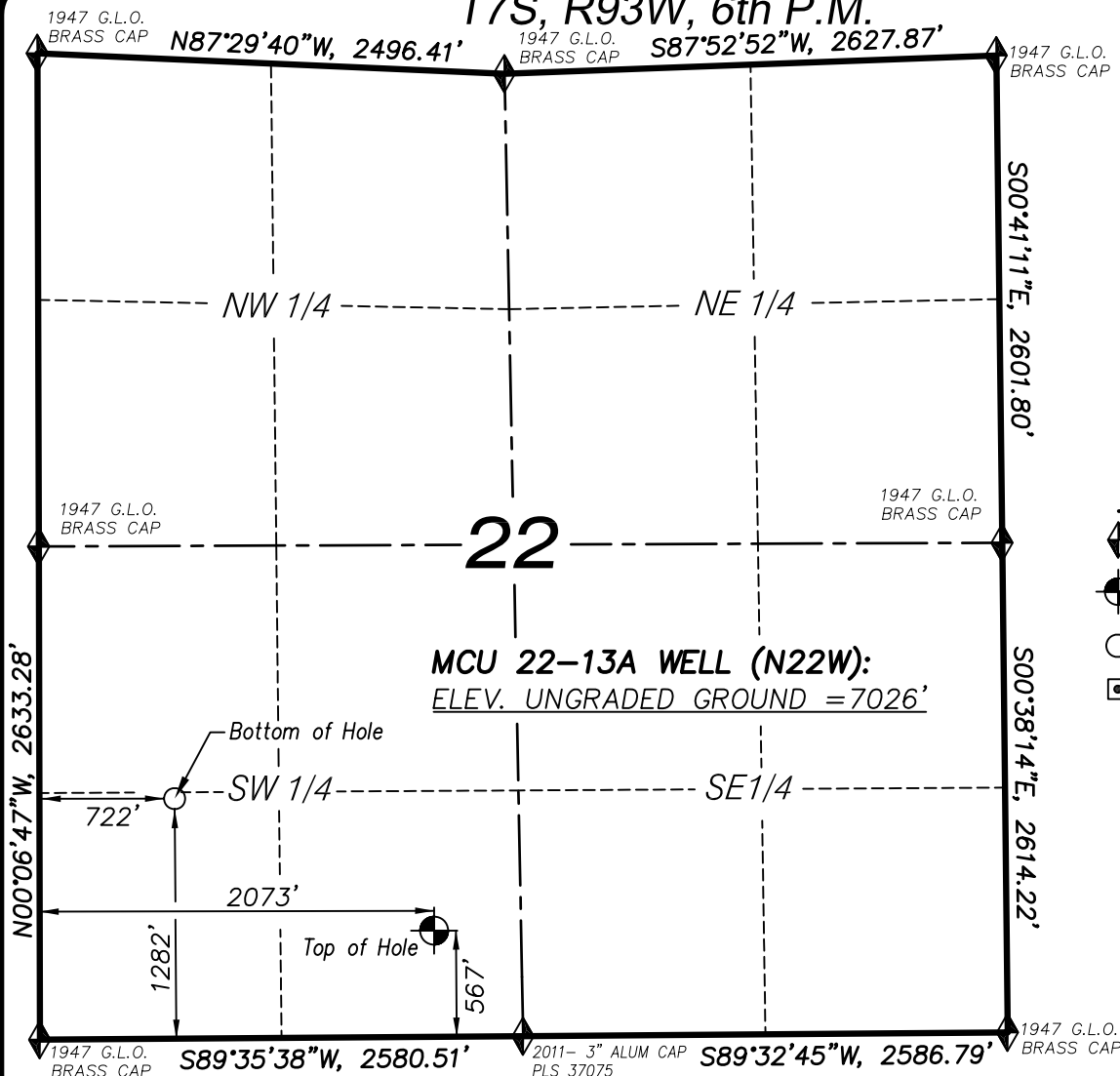
MAP to ACCOMPANY
APPLICATION for PERMIT to DRILL
Encana Oil & Gas (USA) Inc.
MCU Fee 22-12A (N22W) Well
SE 1/4 SW 1/4, SECTION 22
T7S, R93W, 6th P.M.
GARFIELD COUNTY, COLORADO

Location Plat		Scale: 1" = 1000'	SHEET 1f OF 10
Project No.	11-04-54	Date Surveyed: 5/18/11	
Date Drawn:	8/24/11	Latest Revision Date: 8/26/11	



906 Main Street
Evanston, Wyoming 82930
Phone No. (307) 789-4545

T7S, R93W, 6th P.M.



LEGEND

- ◆ SECTION CORNER LOCATED
- ⊙ SURFACE LOCATION
- BOTTOM HOLE LOCATION
- RECORD LOCATION OF CORNER

MCU 22-13A WELL (N22W)
(WELLHEAD LOCATION) NAD 83
LATITUDE = 39.425656° N
LONGITUDE = 107.762059° W
(BOTTOM HOLE LOCATION) NAD 83
LATITUDE = 39.427590° N
LONGITUDE = 107.766848° W

CERTIFICATE OF SURVEYOR

I, TED TAGGART OF FRUITA, COLORADO HEREBY CERTIFY THAT THIS MAP WAS MADE FROM NOTES TAKEN DURING AN ACTUAL SURVEY MADE BY ME OR UNDER MY DIRECTION FOR ENCANA OIL & GAS (USA) INC. AND THAT THIS LOCATION HAS BEEN STAKED ON THE GROUND AS SHOWN HEREON.



906 Main Street
Evanston, Wyoming 82930
Phone No. (307) 789-4545

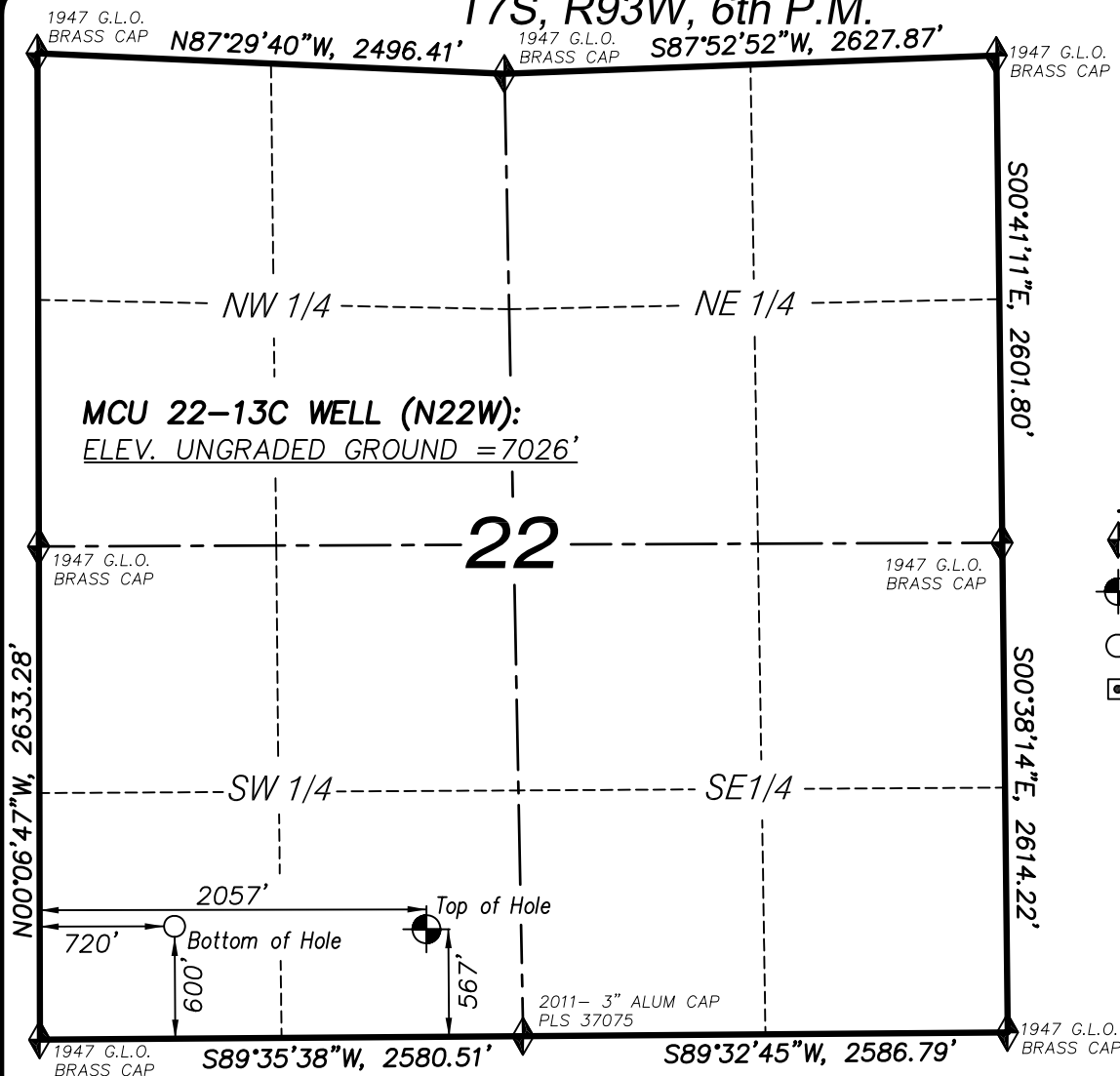
NOTES

1. WELL FOOTAGES ARE MEASURED AT RIGHT ANGLES TO SECTION LINES.
2. BASIS OF BEARING: GEODETIC- BASED ON GPS OBSERVATIONS.
3. ELEVATIONS BASED ON GPS OBSERVATIONS, NAVD 88 (GEOID 03), POST PROCESSED USING NGS OPUS.
4. THE BOTTOM HOLE BEARS N62°27'28"W, 1526' FROM TOP OF HOLE.
5. SEE ADDENDUM TO LEGAL PLAT (SHEET 1q) FOR VISIBLE IMPROVEMENTS WITHIN 400 FEET OF THE PROPOSED OIL & GAS LOCATION.
6. CONTROL FOR SURVEY WAS ESTABLISHED USING DIFFERENTIALLY CORRECTED GPS FROM AN OPUS BASED CONTROL NETWORK. WELL LOCATION WAS ESTABLISHED USING NON-GPS CONVENTIONAL METHODS, THEREFORE NO PDOP READING WAS TAKEN.

MAP to ACCOMPANY
APPLICATION for PERMIT to DRILL
Encana Oil & Gas (USA) Inc.
MCU 22-13A (N22W) Well
SE 1/4 SW 1/4, SECTION 22
T7S, R93W, 6th P.M.
GARFIELD COUNTY, COLORADO

Location Plat		Scale: 1" = 1000'	SHEET 1g OF 10
Project No.	11-04-54	Date Surveyed: 5/18/11	
Date Drawn:	8/24/11	Latest Revision Date: 8/26/11	

T7S, R93W, 6th P.M.



LEGEND

- ◆ SECTION CORNER LOCATED
- ⊕ SURFACE LOCATION
- BOTTOM HOLE LOCATION
- RECORD LOCATION OF CORNER

MCU 22-13C WELL (N22W)
 (WELLHEAD LOCATION) NAD 83
 LATITUDE = 39.425656° N
 LONGITUDE = 107.762117° W
 (BOTTOM HOLE LOCATION) NAD 83
 LATITUDE = 39.425718° N
 LONGITUDE = 107.766849° W

CERTIFICATE OF SURVEYOR

I, TED TAGGART OF FRUITA, COLORADO HEREBY CERTIFY THAT THIS MAP WAS MADE FROM NOTES TAKEN DURING AN ACTUAL SURVEY MADE BY ME OR UNDER MY DIRECTION FOR ENCANA OIL & GAS (USA) INC. AND THAT THIS LOCATION HAS BEEN STAKED ON THE GROUND AS SHOWN HEREON.



NOTES

1. WELL FOOTAGES ARE MEASURED AT RIGHT ANGLES TO SECTION LINES.
2. BASIS OF BEARING: GEODETIC- BASED ON GPS OBSERVATIONS.
3. ELEVATIONS BASED ON GPS OBSERVATIONS, NAVD 88 (GEOID 03), POST PROCESSED USING NGS OPUS.
4. THE BOTTOM HOLE BEARS N88°59'36"W, 1337' FROM TOP OF HOLE.
5. SEE ADDENDUM TO LEGAL PLAT (SHEET 1q) FOR VISIBLE IMPROVEMENTS WITHIN 400 FEET OF THE PROPOSED OIL & GAS LOCATION.
6. CONTROL FOR SURVEY WAS ESTABLISHED USING DIFFERENTIALLY CORRECTED GPS FROM AN OPUS BASED CONTROL NETWORK. WELL LOCATION WAS ESTABLISHED USING NON-GPS CONVENTIONAL METHODS, THEREFORE NO PDOP READING WAS TAKEN.

MAP to ACCOMPANY
 APPLICATION for PERMIT to DRILL
Encana Oil & Gas (USA) Inc.
MCU 22-13C (N22W) Well

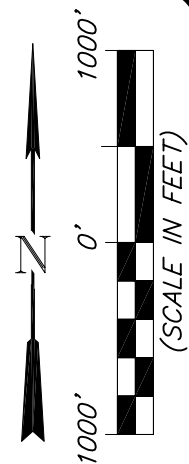
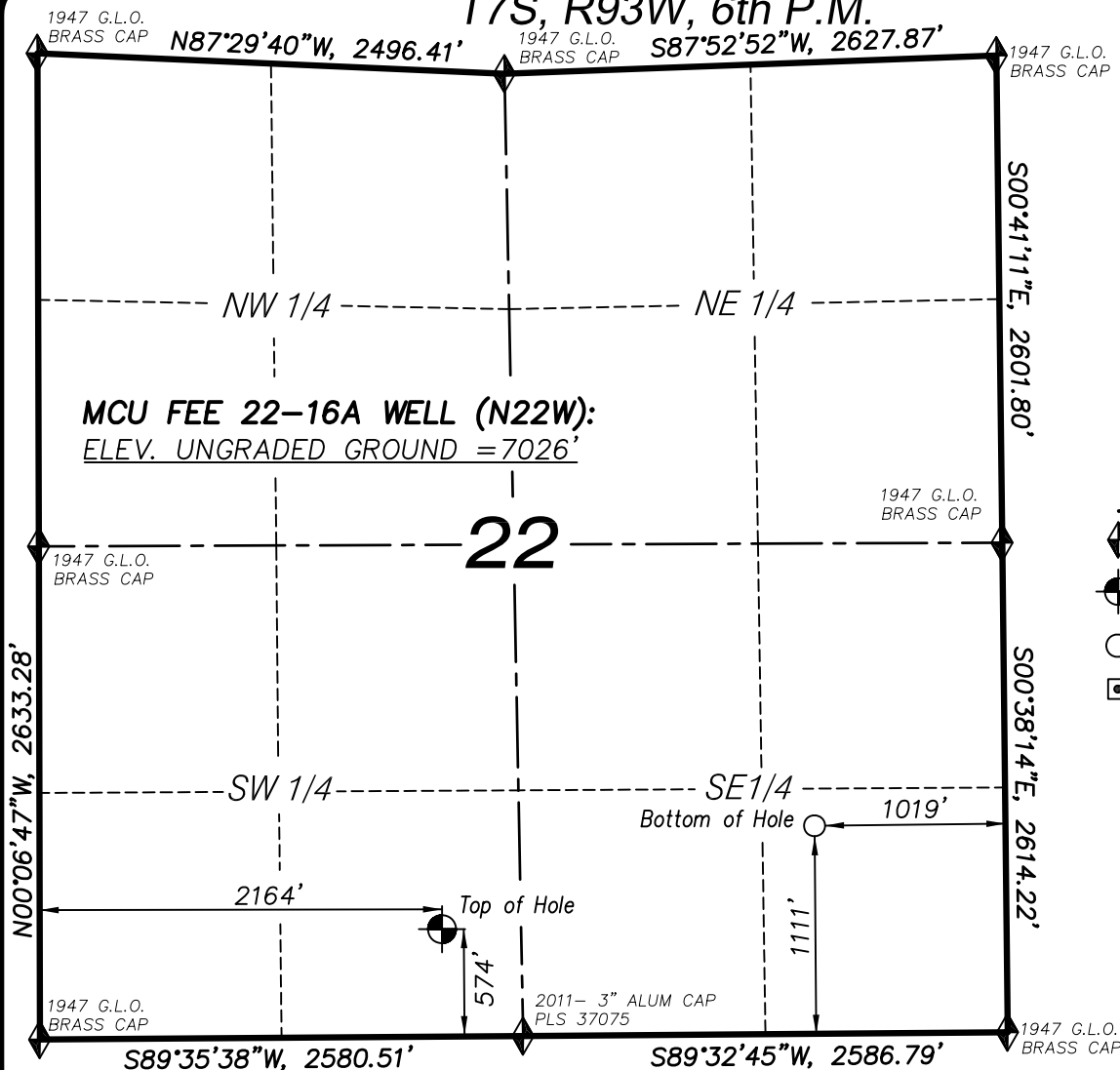
SE1/4 SW1/4, SECTION 22
 T7S, R93W, 6th P.M.
 GARFIELD COUNTY, COLORADO

Location Plat		Scale: 1" = 1000'	SHEET 1h OF 10
Project No.	11-04-54	Date Surveyed: 5/18/11	
Date Drawn:	8/24/11	Latest Revision Date: 8/26/11	



906 Main Street
 Evanston, Wyoming 82930
 Phone No. (307) 789-4545

T7S, R93W, 6th P.M.



LEGEND

- ◆ SECTION CORNER LOCATED
- ⊙ SURFACE LOCATION
- BOTTOM HOLE LOCATION
- RECORD LOCATION OF CORNER

MCU FEE 22-16A WELL (N22W)
(WELLHEAD LOCATION) NAD 83
LATITUDE = 39.425678° N
LONGITUDE = 107.761738° W
(BOTTOM HOLE LOCATION) NAD 83
LATITUDE = 39.427196° N
LONGITUDE = 107.754758° W

CERTIFICATE OF SURVEYOR

I, TED TAGGART OF FRUITA, COLORADO HEREBY CERTIFY THAT THIS MAP WAS MADE FROM NOTES TAKEN DURING AN ACTUAL SURVEY MADE BY ME OR UNDER MY DIRECTION FOR ENCANA OIL & GAS (USA) INC. AND THAT THIS LOCATION HAS BEEN STAKED ON THE GROUND AS SHOWN HEREON.



906 Main Street
Evanston, Wyoming 82930
Phone No. (307) 789-4545

NOTES

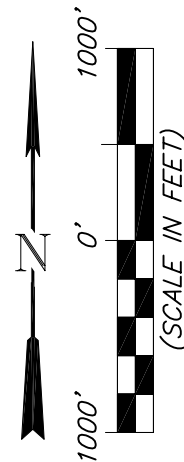
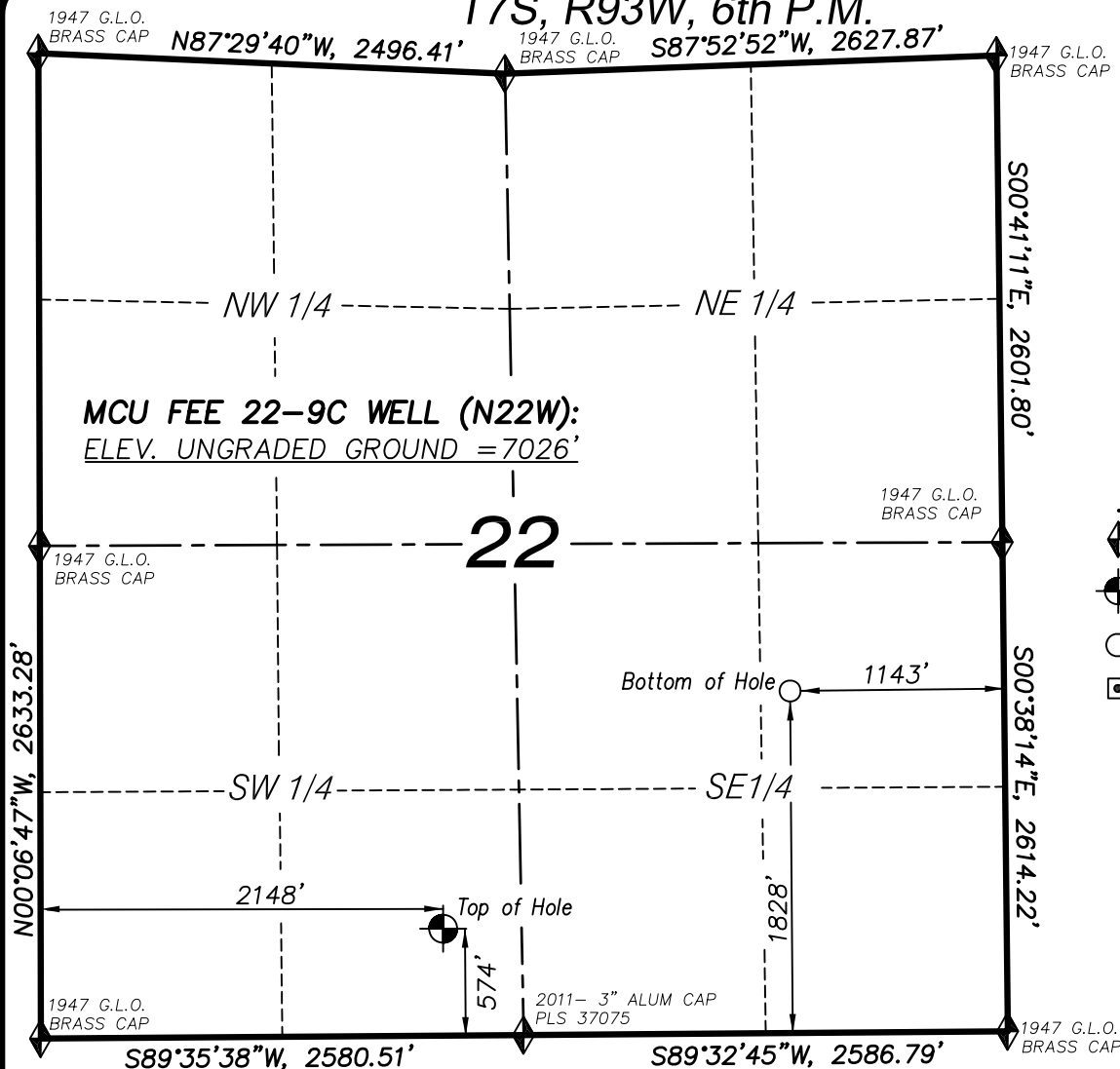
1. WELL FOOTAGES ARE MEASURED AT RIGHT ANGLES TO SECTION LINES.
2. BASIS OF BEARING: GEODETIC- BASED ON GPS OBSERVATIONS.
3. ELEVATIONS BASED ON GPS OBSERVATIONS, NAVD 88 (GEOID 03), POST PROCESSED USING NGS OPUS.
4. THE BOTTOM HOLE BEARS N74°22'01"E, 2049' FROM TOP OF HOLE.
5. SEE ADDENDUM TO LEGAL PLAT (SHEET 1q) FOR VISIBLE IMPROVEMENTS WITHIN 400 FEET OF THE PROPOSED OIL & GAS LOCATION.
6. CONTROL FOR SURVEY WAS ESTABLISHED USING DIFFERENTIALLY CORRECTED GPS FROM AN OPUS BASED CONTROL NETWORK. WELL LOCATION WAS ESTABLISHED USING NON-GPS CONVENTIONAL METHODS, THEREFORE NO PDOP READING WAS TAKEN.

MAP to ACCOMPANY
APPLICATION for PERMIT to DRILL
Encana Oil & Gas (USA) Inc.
MCU Fee 22-16A (N22W) Well

SE 1/4 SW 1/4, SECTION 22
T7S, R93W, 6th P.M.
GARFIELD COUNTY, COLORADO

Location Plat		Scale: 1" = 1000'	SHEET 1i OF 10
Project No.	11-04-54	Date Surveyed: 5/18/11	
Date Drawn:	8/24/11	Latest Revision Date: 8/26/11	

T7S, R93W, 6th P.M.



LEGEND

- ◆ SECTION CORNER LOCATED
- ⊙ SURFACE LOCATION
- BOTTOM HOLE LOCATION
- RECORD LOCATION OF CORNER

MCU FEE 22-9C WELL (N22W)
(WELLHEAD LOCATION) NAD 83
LATITUDE = 39.425678° N
LONGITUDE = 107.761796° W
(BOTTOM HOLE LOCATION) NAD 83
LATITUDE = 39.429161° N
LONGITUDE = 107.755226° W

CERTIFICATE OF SURVEYOR

I, TED TAGGART OF FRUITA, COLORADO HEREBY CERTIFY THAT THIS MAP WAS MADE FROM NOTES TAKEN DURING AN ACTUAL SURVEY MADE BY ME OR UNDER MY DIRECTION FOR ENCANA OIL & GAS (USA) INC. AND THAT THIS LOCATION HAS BEEN STAKED ON THE GROUND AS SHOWN HEREON.



906 Main Street
Evanston, Wyoming 82930
Phone No. (307) 789-4545

NOTES

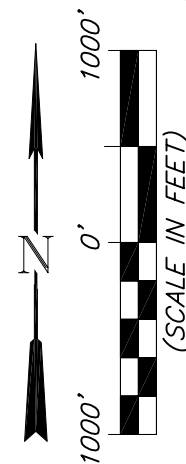
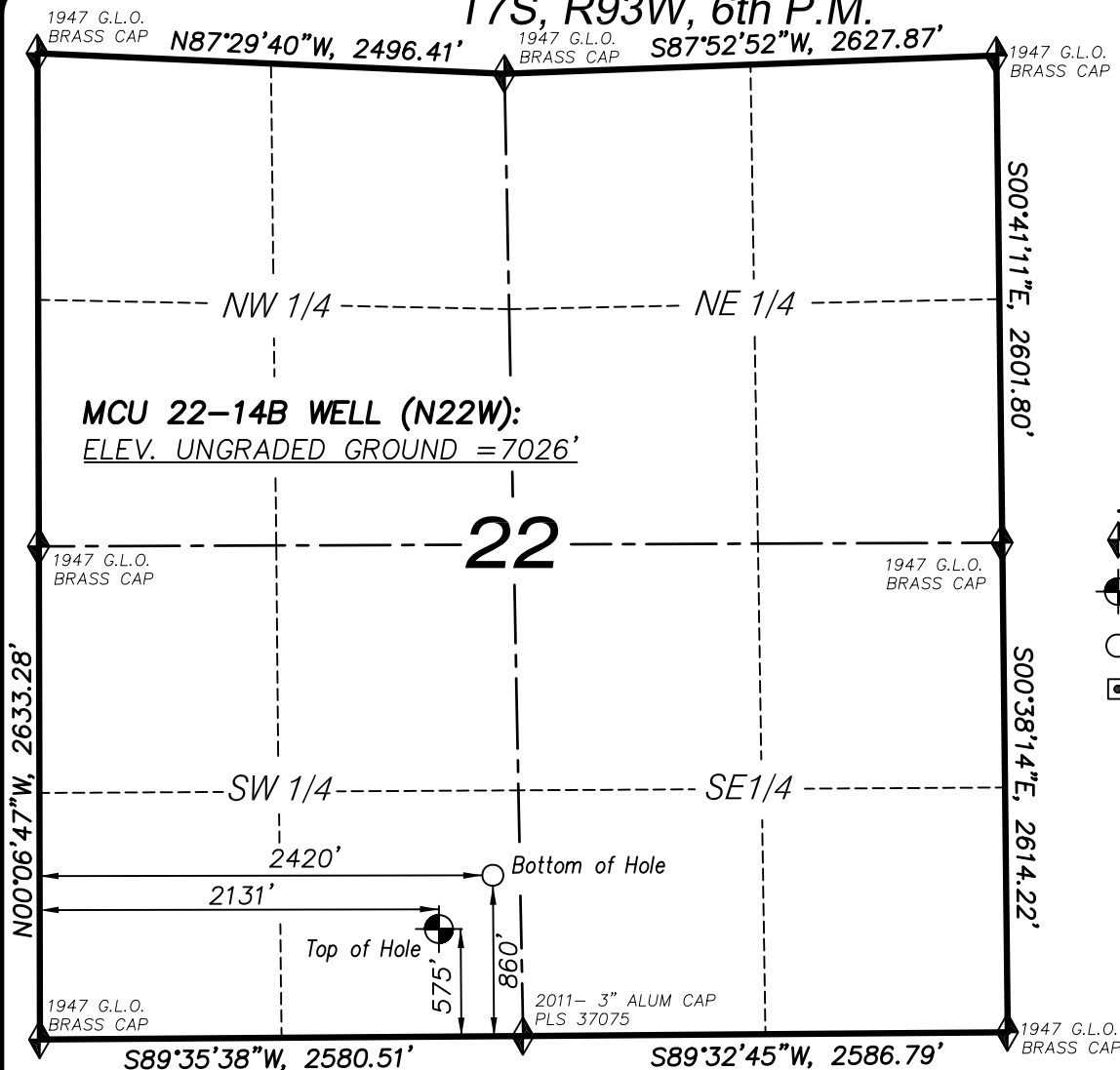
1. WELL FOOTAGES ARE MEASURED AT RIGHT ANGLES TO SECTION LINES.
2. BASIS OF BEARING: GEODETIC- BASED ON GPS OBSERVATIONS.
3. ELEVATIONS BASED ON GPS OBSERVATIONS, NAVD 88 (GEOID 03), POST PROCESSED USING NGS OPUS.
4. THE BOTTOM HOLE BEARS N55°40'40"E, 2249' FROM TOP OF HOLE.
5. SEE ADDENDUM TO LEGAL PLAT (SHEET 1q) FOR VISIBLE IMPROVEMENTS WITHIN 400 FEET OF THE PROPOSED OIL & GAS LOCATION.
6. CONTROL FOR SURVEY WAS ESTABLISHED USING DIFFERENTIALLY CORRECTED GPS FROM AN OPUS BASED CONTROL NETWORK. WELL LOCATION WAS ESTABLISHED USING NON-GPS CONVENTIONAL METHODS, THEREFORE NO PDOP READING WAS TAKEN.

MAP to ACCOMPANY
APPLICATION for PERMIT to DRILL
Encana Oil & Gas (USA) Inc.
MCU Fee 22-9C (N22W) Well

SE1/4 SW1/4, SECTION 22
T7S, R93W, 6th P.M.
GARFIELD COUNTY, COLORADO

Location Plat		Scale: 1" = 1000'	SHEET 1j OF 10
Project No.	11-04-54	Date Surveyed: 5/18/11	
Date Drawn:	8/24/11	Latest Revision Date: 8/26/11	

T7S, R93W, 6th P.M.



LEGEND

- ◆ SECTION CORNER LOCATED
- ⊙ SURFACE LOCATION
- BOTTOM HOLE LOCATION
- RECORD LOCATION OF CORNER

MCU 22-14B WELL (N22W)
(WELLHEAD LOCATION) NAD 83
LATITUDE = 39.425678° N
LONGITUDE = 107.761855° W
(BOTTOM HOLE LOCATION) NAD 83
LATITUDE = 39.426468° N
LONGITUDE = 107.760835° W

CERTIFICATE OF SURVEYOR

I, TED TAGGART OF FRUITA, COLORADO HEREBY CERTIFY THAT THIS MAP WAS MADE FROM NOTES TAKEN DURING AN ACTUAL SURVEY MADE BY ME OR UNDER MY DIRECTION FOR ENCANA OIL & GAS (USA) INC. AND THAT THIS LOCATION HAS BEEN STAKED ON THE GROUND AS SHOWN HEREON.



906 Main Street
Evanston, Wyoming 82930
Phone No. (307) 789-4545

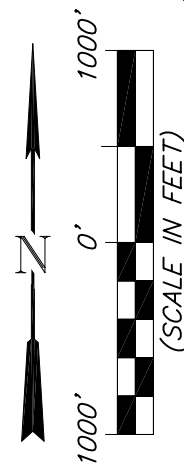
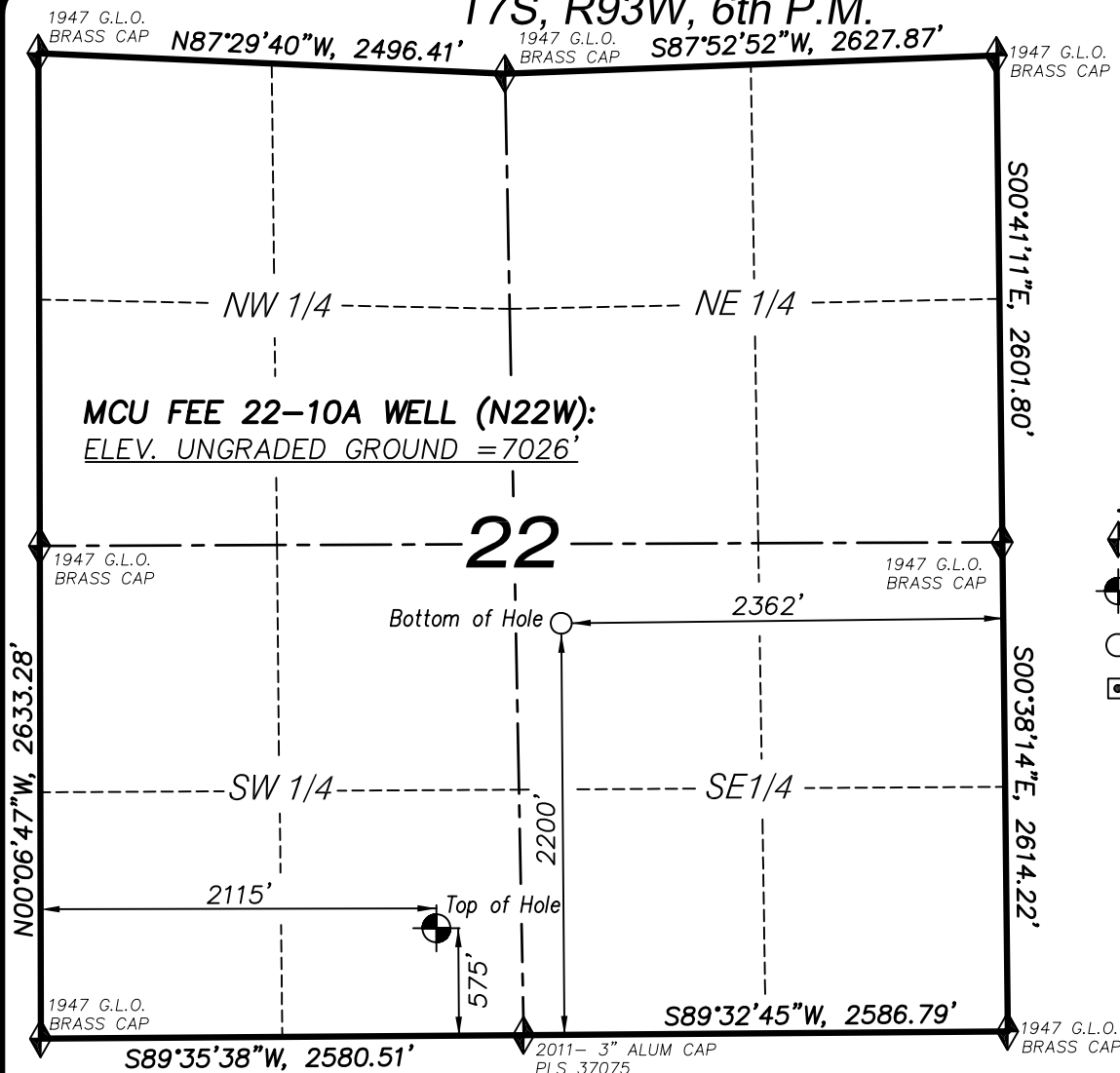
NOTES

1. WELL FOOTAGES ARE MEASURED AT RIGHT ANGLES TO SECTION LINES.
2. BASIS OF BEARING: GEODETIC- BASED ON GPS OBSERVATIONS.
3. ELEVATIONS BASED ON GPS OBSERVATIONS, NAVD 88 (GEOID 03), POST PROCESSED USING NGS OPUS.
4. THE BOTTOM HOLE BEARS N45°03'58"E, 407' FROM TOP OF HOLE.
5. SEE ADDENDUM TO LEGAL PLAT (SHEET 1q) FOR VISIBLE IMPROVEMENTS WITHIN 400 FEET OF THE PROPOSED OIL & GAS LOCATION.
6. CONTROL FOR SURVEY WAS ESTABLISHED USING DIFFERENTIALLY CORRECTED GPS FROM AN OPUS BASED CONTROL NETWORK. WELL LOCATION WAS ESTABLISHED USING NON-GPS CONVENTIONAL METHODS, THEREFORE NO PDOP READING WAS TAKEN.

MAP to ACCOMPANY
APPLICATION for PERMIT to DRILL
Encana Oil & Gas (USA) Inc.
MCU 22-14B (N22W) Well
SE1/4 SW1/4, SECTION 22
T7S, R93W, 6th P.M.
GARFIELD COUNTY, COLORADO

Location Plat		Scale: 1" = 1000'	SHEET 1k OF 10
Project No.	11-04-54	Date Surveyed: 5/18/11	
Date Drawn:	8/24/11	Latest Revision Date: 8/26/11	

T7S, R93W, 6th P.M.



LEGEND

- ◆ SECTION CORNER LOCATED
- ⊙ SURFACE LOCATION
- BOTTOM HOLE LOCATION
- RECORD LOCATION OF CORNER

MCU FEE 22-10A WELL (N22W)
(WELLHEAD LOCATION) NAD 83
LATITUDE = 39.425678° N
LONGITUDE = 107.761913° W
(BOTTOM HOLE LOCATION) NAD 83
LATITUDE = 39.430154° N
LONGITUDE = 107.759555° W

CERTIFICATE OF SURVEYOR

I, TED TAGGART OF FRUITA, COLORADO HEREBY CERTIFY THAT THIS MAP WAS MADE FROM NOTES TAKEN DURING AN ACTUAL SURVEY MADE BY ME OR UNDER MY DIRECTION FOR ENCANA OIL & GAS (USA) INC. AND THAT THIS LOCATION HAS BEEN STAKED ON THE GROUND AS SHOWN HEREON.



906 Main Street
Evanston, Wyoming 82930
Phone No. (307) 789-4545

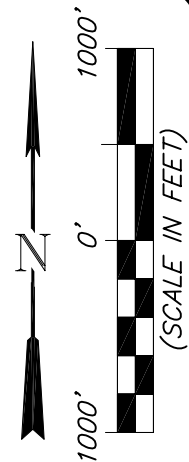
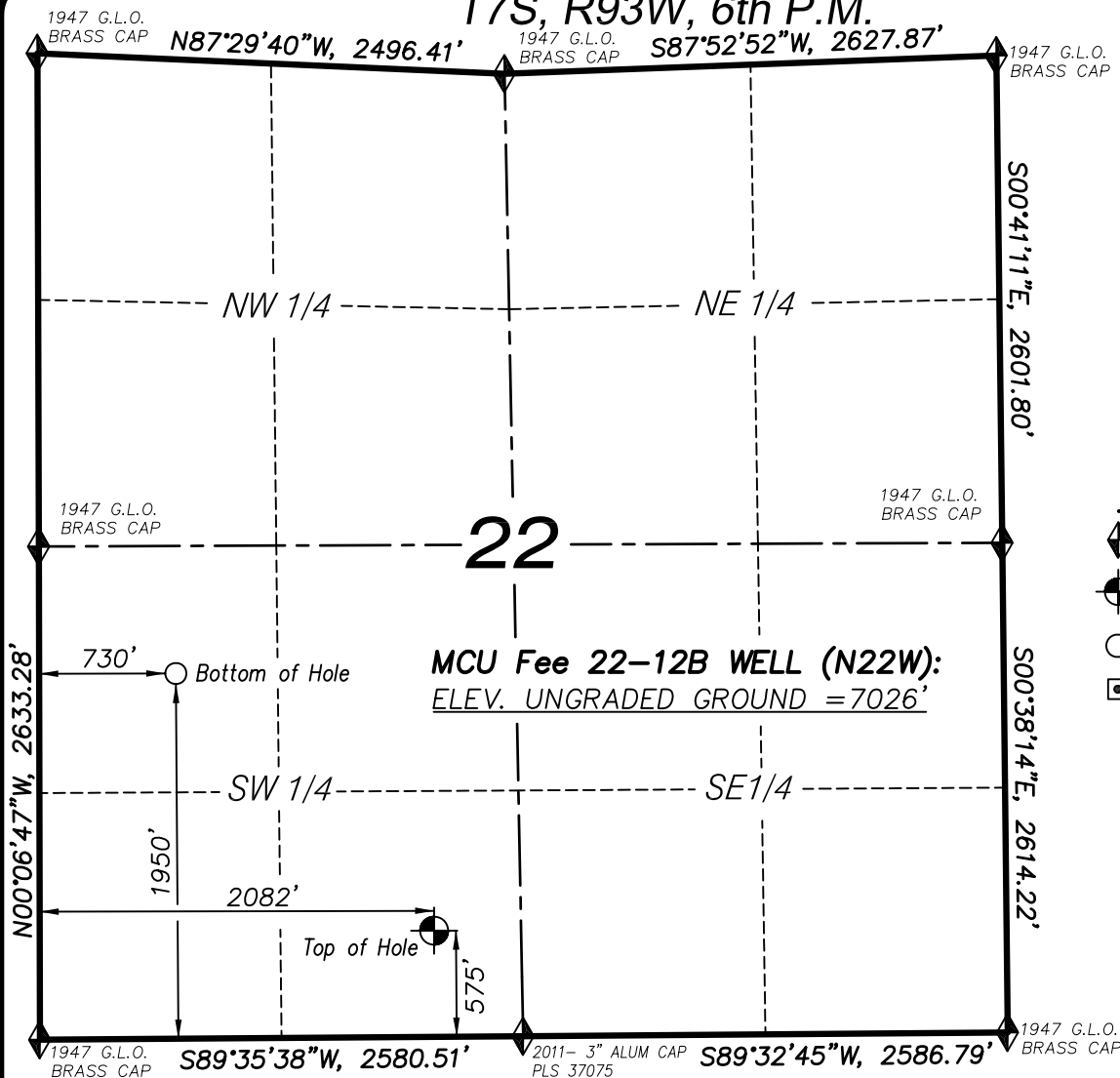
NOTES

1. WELL FOOTAGES ARE MEASURED AT RIGHT ANGLES TO SECTION LINES.
2. BASIS OF BEARING: GEODETIC- BASED ON GPS OBSERVATIONS.
3. ELEVATIONS BASED ON GPS OBSERVATIONS, NAVD 88 (GEOID 03), POST PROCESSED USING NGS OPUS.
4. THE BOTTOM HOLE BEARS N22°15'21"E, 1762' FROM TOP OF HOLE.
5. SEE ADDENDUM TO LEGAL PLAT (SHEET 1q) FOR VISIBLE IMPROVEMENTS WITHIN 400 FEET OF THE PROPOSED OIL & GAS LOCATION.
6. CONTROL FOR SURVEY WAS ESTABLISHED USING DIFFERENTIALLY CORRECTED GPS FROM AN OPUS BASED CONTROL NETWORK. WELL LOCATION WAS ESTABLISHED USING NON-GPS CONVENTIONAL METHODS, THEREFORE NO PDOP READING WAS TAKEN.

MAP to ACCOMPANY
APPLICATION for PERMIT to DRILL
Encana Oil & Gas (USA) Inc.
MCU Fee 22-10A (N22W) Well
SE1/4 SW1/4, SECTION 22
T7S, R93W, 6th P.M.
GARFIELD COUNTY, COLORADO

Location Plat		Scale: 1" = 1000'	SHEET 1L OF 10
Project No.	11-04-54	Date Surveyed: 5/18/11	
Date Drawn:	8/24/11	Latest Revision Date: 8/26/11	

T7S, R93W, 6th P.M.



LEGEND

- ◆ SECTION CORNER LOCATED
- ⊙ SURFACE LOCATION
- BOTTOM HOLE LOCATION
- RECORD LOCATION OF CORNER

MCU Fee 22-12B WELL (N22W)
(WELLHEAD LOCATION) NAD 83
LATITUDE = 39.425678° N
LONGITUDE = 107.762030° W
(BOTTOM HOLE LOCATION) NAD 83
LATITUDE = 39.429424° N
LONGITUDE = 107.766826° W

CERTIFICATE OF SURVEYOR

I, TED TAGGART OF FRUITA, COLORADO HEREBY CERTIFY THAT THIS MAP WAS MADE FROM NOTES TAKEN DURING AN ACTUAL SURVEY MADE BY ME OR UNDER MY DIRECTION FOR ENCANA OIL & GAS (USA) INC. AND THAT THIS LOCATION HAS BEEN STAKED ON THE GROUND AS SHOWN HEREON.



906 Main Street
Evanston, Wyoming 82930
Phone No. (307) 789-4545

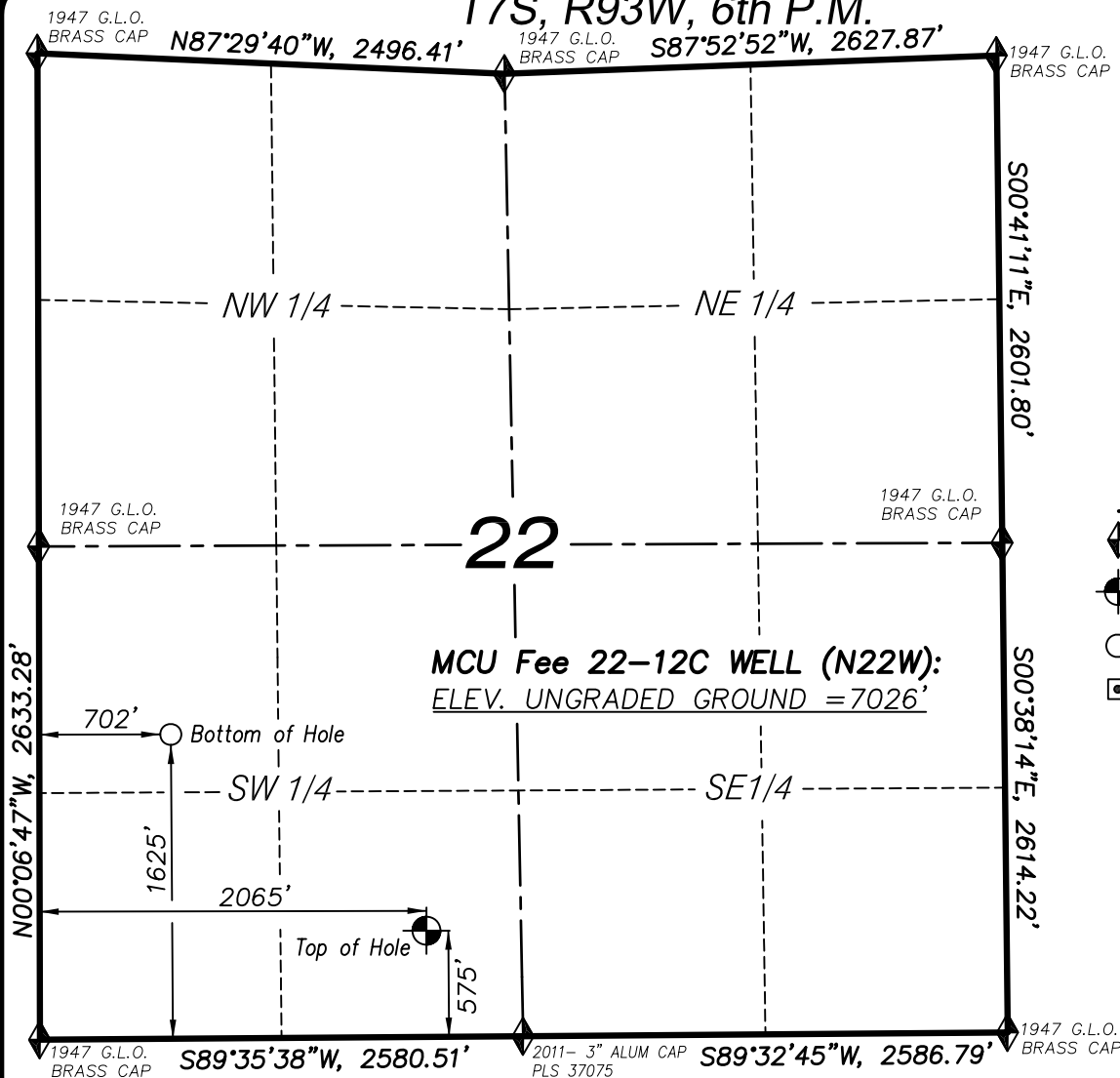
NOTES

1. WELL FOOTAGES ARE MEASURED AT RIGHT ANGLES TO SECTION LINES.
2. BASIS OF BEARING: GEODETIC- BASED ON GPS OBSERVATIONS.
3. ELEVATIONS BASED ON GPS OBSERVATIONS, NAVD 88 (GEOID 03), POST PROCESSED USING NGS OPUS.
4. THE BOTTOM HOLE BEARS N44°45'54"W, 1923' FROM TOP OF HOLE.
5. SEE ADDENDUM TO LEGAL PLAT (SHEET 1q) FOR VISIBLE IMPROVEMENTS WITHIN 400 FEET OF THE PROPOSED OIL & GAS LOCATION.
6. CONTROL FOR SURVEY WAS ESTABLISHED USING DIFFERENTIALLY CORRECTED GPS FROM AN OPUS BASED CONTROL NETWORK. WELL LOCATION WAS ESTABLISHED USING NON-GPS CONVENTIONAL METHODS, THEREFORE NO PDOP READING WAS TAKEN.

MAP to ACCOMPANY
APPLICATION for PERMIT to DRILL
Encana Oil & Gas (USA) Inc.
MCU Fee 22-12B (N22W) Well
SE 1/4 SW 1/4, SECTION 22
T7S, R93W, 6th P.M.
GARFIELD COUNTY, COLORADO

Location Plat		Scale: 1" = 1000'	SHEET 1n OF 10
Project No.	11-04-54	Date Surveyed: 5/18/11	
Date Drawn:	8/24/11	Latest Revision Date: 8/26/11	

T7S, R93W, 6th P.M.



LEGEND

- ◆ SECTION CORNER LOCATED
- SURFACE LOCATION
- BOTTOM HOLE LOCATION
- RECORD LOCATION OF CORNER

MCU Fee 22-12C WELL (N22W):
ELEV. UNGRADED GROUND = 7026'

MCU Fee 22-12C WELL (N22W)
(WELLHEAD LOCATION) NAD 83
LATITUDE = 39.425678° N
LONGITUDE = 107.762088° W
(BOTTOM HOLE LOCATION) NAD 83
LATITUDE = 39.428531° N
LONGITUDE = 107.766922° W

CERTIFICATE OF SURVEYOR

I, TED TAGGART OF FRUITA, COLORADO HEREBY CERTIFY THAT THIS MAP WAS MADE FROM NOTES TAKEN DURING AN ACTUAL SURVEY MADE BY ME OR UNDER MY DIRECTION FOR ENCANA OIL & GAS (USA) INC. AND THAT THIS LOCATION HAS BEEN STAKED ON THE GROUND AS SHOWN HEREON.



NOTES

1. WELL FOOTAGES ARE MEASURED AT RIGHT ANGLES TO SECTION LINES.
2. BASIS OF BEARING: GEODETIC- BASED ON GPS OBSERVATIONS.
3. ELEVATIONS BASED ON GPS OBSERVATIONS, NAVD 88 (GEOID 03), POST PROCESSED USING NGS OPUS.
4. THE BOTTOM HOLE BEARS N52°41'30"W, 1716' FROM TOP OF HOLE.
5. SEE ADDENDUM TO LEGAL PLAT (SHEET 1q) FOR VISIBLE IMPROVEMENTS WITHIN 400 FEET OF THE PROPOSED OIL & GAS LOCATION.
6. CONTROL FOR SURVEY WAS ESTABLISHED USING DIFFERENTIALLY CORRECTED GPS FROM AN OPUS BASED CONTROL NETWORK. WELL LOCATION WAS ESTABLISHED USING NON-GPS CONVENTIONAL METHODS, THEREFORE NO PDOP READING WAS TAKEN.

MAP to ACCOMPANY
APPLICATION for PERMIT to DRILL
Encana Oil & Gas (USA) Inc.
MCU Fee 22-12C (N22W) Well

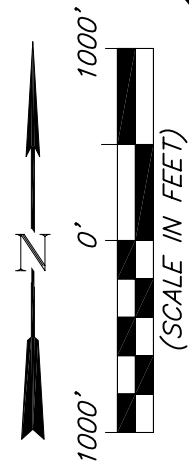
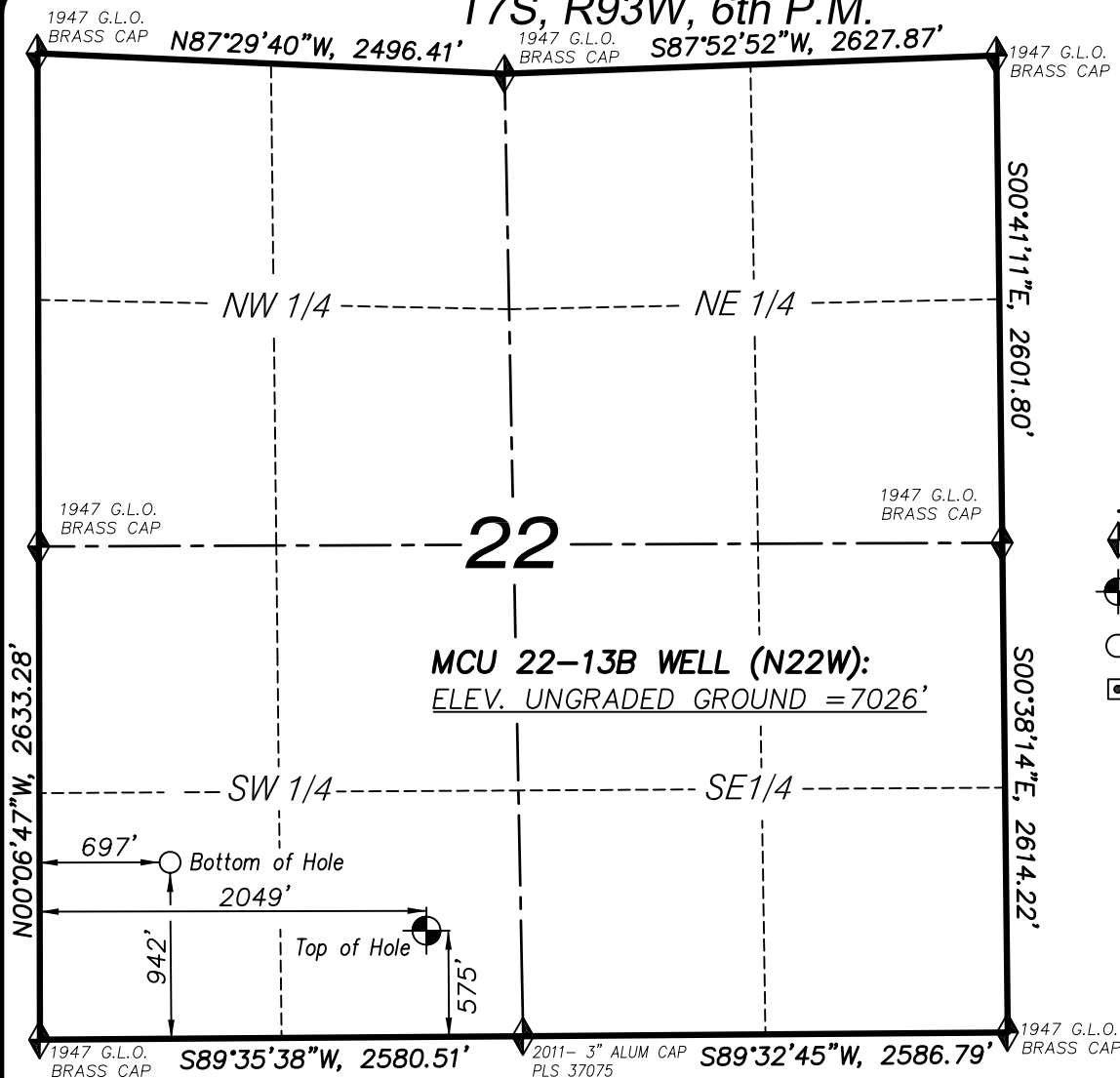
SE1/4 SW1/4, SECTION 22
T7S, R93W, 6th P.M.
GARFIELD COUNTY, COLORADO

Location Plat		Scale: 1" = 1000'	SHEET 10 OF 10
Project No.	11-04-54	Date Surveyed: 5/18/11	
Date Drawn:	8/24/11	Latest Revision Date: 8/26/11	



906 Main Street
Evanston, Wyoming 82930
Phone No. (307) 789-4545

T7S, R93W, 6th P.M.



LEGEND

- ◆ SECTION CORNER LOCATED
- ⊙ SURFACE LOCATION
- BOTTOM HOLE LOCATION
- RECORD LOCATION OF CORNER

MCU 22-13B WELL (N22W)
(WELLHEAD LOCATION) NAD 83
LATITUDE = 39.425678° N
LONGITUDE = 107.762146° W
(BOTTOM HOLE LOCATION) NAD 83
LATITUDE = 39.426656° N
LONGITUDE = 107.766933° W

CERTIFICATE OF SURVEYOR

I, TED TAGGART OF FRUITA, COLORADO HEREBY CERTIFY THAT THIS MAP WAS MADE FROM NOTES TAKEN DURING AN ACTUAL SURVEY MADE BY ME OR UNDER MY DIRECTION FOR ENCANA OIL & GAS (USA) INC. AND THAT THIS LOCATION HAS BEEN STAKED ON THE GROUND AS SHOWN HEREON.



NOTES

1. WELL FOOTAGES ARE MEASURED AT RIGHT ANGLES TO SECTION LINES.
2. BASIS OF BEARING: GEODETIC- BASED ON GPS OBSERVATIONS.
3. ELEVATIONS BASED ON GPS OBSERVATIONS, NAVD 88 (GEOID 03), POST PROCESSED USING NGS OPUS.
4. THE BOTTOM HOLE BEARS N75°11'59"W, 1399' FROM TOP OF HOLE.
5. SEE ADDENDUM TO LEGAL PLAT (SHEET 1q) FOR VISIBLE IMPROVEMENTS WITHIN 400 FEET OF THE PROPOSED OIL & GAS LOCATION.
6. CONTROL FOR SURVEY WAS ESTABLISHED USING DIFFERENTIALLY CORRECTED GPS FROM AN OPUS BASED CONTROL NETWORK. WELL LOCATION WAS ESTABLISHED USING NON-GPS CONVENTIONAL METHODS, THEREFORE NO PDOP READING WAS TAKEN.

MAP to ACCOMPANY
APPLICATION for PERMIT to DRILL
Encana Oil & Gas (USA) Inc.
MCU 22-13B (N22W) Well
SE1/4 SW1/4, SECTION 22
T7S, R93W, 6th P.M.
GARFIELD COUNTY, COLORADO

Location Plat		Scale: 1" = 1000'	SHEET 1p OF 10
Project No.	11-04-54	Date Surveyed: 5/18/11	
Date Drawn:	8/24/11	Latest Revision Date: 8/26/11	



906 Main Street
Evanston, Wyoming 82930
Phone No. (307) 789-4545

Encana Oil & Gas (USA) Inc.
 ADDENDUM TO LEGAL PLATS FOR
N22W Well Pad
 SECTION 22, T7S, R93W, 6th P.M.



NOTE: TIES ARE FROM
THE 22-10A WELL

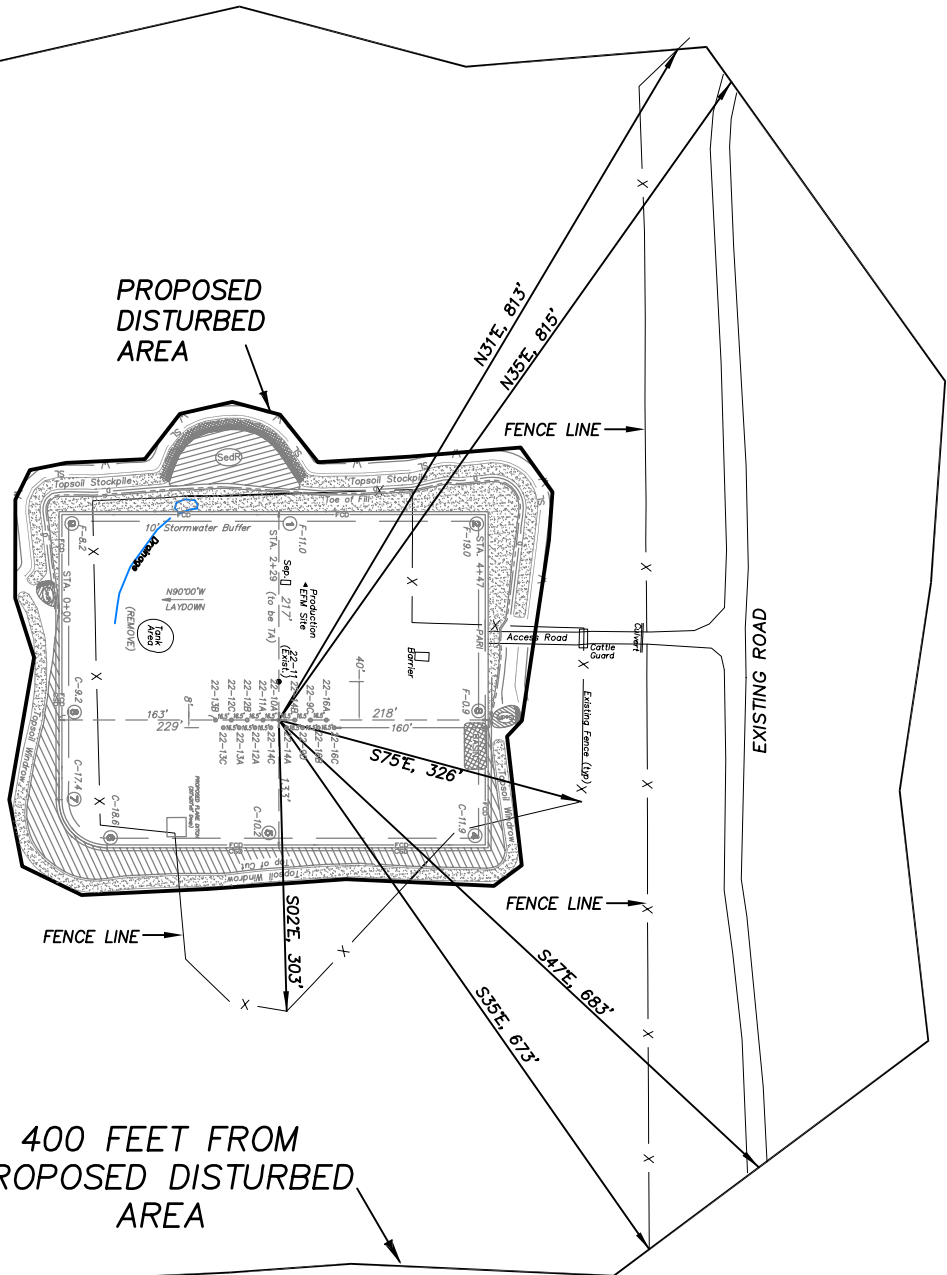
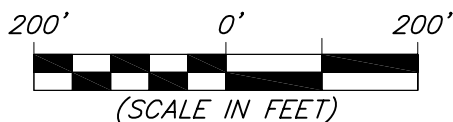
400 FEET FROM
PROPOSED DISTURBED
AREA

DISTANCE TO NEAREST
PUBLIC ROAD IS
± 2200' FEET.

DISTANCE TO NEAREST
BUILDING IS ± 3400
FEET.

DISTANCE TO NEAREST
ABOVE GROUND UTILITY
IS ± 2100' FEET.

DISTANCE TO NEAREST
RAILROAD IS ±38,000
FEET



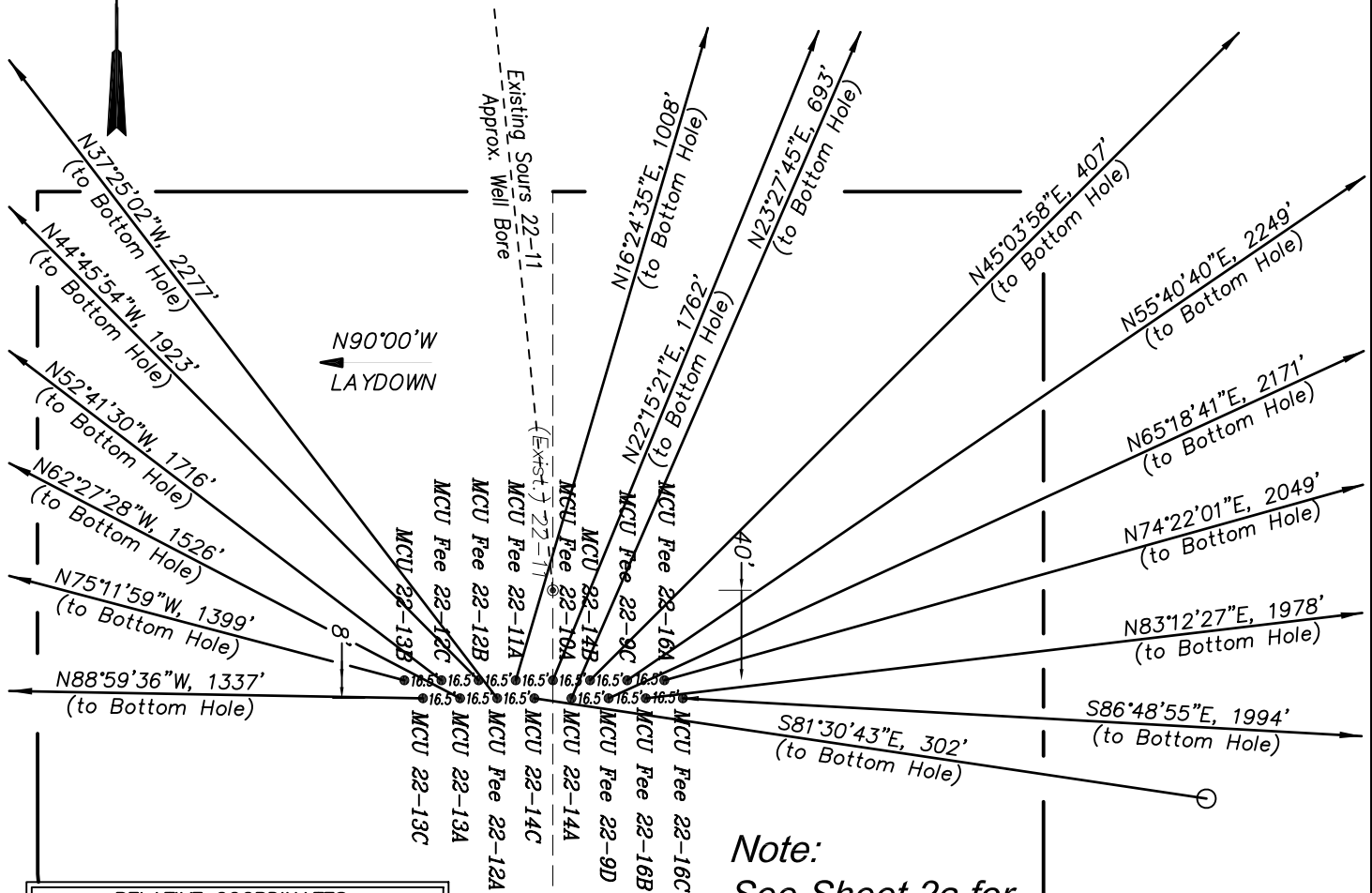
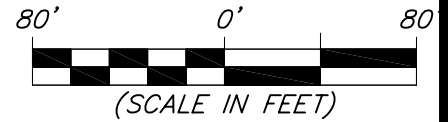
Surface use of the area is an existing well pad. Surrounding area of use is grazing. Vegetation consists mainly of sage brush, oak brush and native grasses.



906 Main Street
 Evanston, Wyoming 82930
 Phone No. (307) 789-4545

Survey Addendum		Scale: 1" = 200'	SHEET 1q OF 10
Project No.	11-04-54	Date Surveyed: 5/18/11	
Date	8/24/11	Latest Revision	
Drawn:	8/24/11	Date: 8/26/11	

Encana Oil & Gas (USA) Inc.
N22W Well Pad
Section 22, T7S, R93W, 6th P.M.
WELL PAD INTERFERENCE PLAT



Note:
 See Sheet 2a for
 Well Coordinates

RELATIVE COORDINATES From top hole to bottom hole		
WELL	NORTH	EAST
22-16C	-111	1991
22-16B	234	1964
22-9D	907	1973
22-14A	636	276
22-14C	45	299
22-12A	1808	-1384
22-13A	706	-1353
22-13C	23	-1337
22-16A	552	1973
22-9C	1268	1857
22-14B	287	288
22-10A	1631	667
22-11A	967	285
22-12B	1365	-1354
22-12C	1040	-1365
22-13B	357	-1353

TOP HOLE FOOTAGES

MCU FEE 22-16C (N22W)
 566' FSL & 2172' FWL
 MCU FEE 22-16B (N22W)
 566' FSL & 2156' FWL
 MCU FEE 22-9D (N22W)
 566' FSL & 2139' FWL
 MCU 22-14A (N22W)
 567' FSL & 2123' FWL
 MCU 22-14C (N22W)
 567' FSL & 2106' FWL
 MCU FEE 22-12A (N22W)
 567' FSL & 2090' FWL
 MCU 22-13A (N22W)
 567' FSL & 2073' FWL
 MCU 22-13C (N22W)
 567' FSL & 2057' FWL

TOP HOLE FOOTAGES

MCU FEE 22-16A (N22W)
 574' FSL & 2164' FWL
 MCU FEE 22-9C (N22W)
 574' FSL & 2148' FWL
 MCU 22-14B (N22W)
 575' FSL & 2131' FWL
 MCU FEE 22-10A (N22W)
 575' FSL & 2115' FWL
 MCU FEE 22-11A (N22W)
 575' FSL & 2098' FWL
 MCU FEE 22-12B (N22W)
 575' FSL & 2082' FWL
 MCU FEE 22-12C (N22W)
 575' FSL & 2065' FWL
 MCU 22-13B (N22W)
 575' FSL & 2049' FWL



906 Main Street
 Evanston, Wyoming 82930
 Phone No. (307) 789-4545

Interference Plat		Scale: 1" = 80'	SHEET 2 OF 10
Project No.	11-04-54	Date Surveyed: 5/18/11	
Date Drawn:	8/24/11	Latest Revision Date: 8/26/11	

Encana Oil & Gas (USA) Inc.
N22W Well Pad
Section 22, T7S, R93W, 6th P.M.
WELL PAD INTERFERENCE PLAT

MCU FEE 22-16C	
NAD 83 (SURFACE LOCATION)	NAD 83 (BOTTOM HOLE)
LATITUDE = 39.425656°	LATITUDE = 39.425355°
LONGITUDE = 107.761709°	LONGITUDE = 107.754663°
MCU FEE 22-16B	
NAD 83 (SURFACE LOCATION)	NAD 83 (BOTTOM HOLE)
LATITUDE = 39.425656°	LATITUDE = 39.426301°
LONGITUDE = 107.761767°	LONGITUDE = 107.754818°
MCU FEE 22-9D	
NAD 83 (SURFACE LOCATION)	NAD 83 (BOTTOM HOLE)
LATITUDE = 39.425656°	LATITUDE = 39.428148°
LONGITUDE = 107.761825°	LONGITUDE = 107.754846°
MCU 22-14A	
NAD 83 (SURFACE LOCATION)	NAD 83 (BOTTOM HOLE)
LATITUDE = 39.425656°	LATITUDE = 39.427400°
LONGITUDE = 107.761884°	LONGITUDE = 107.760909°
MCU 22-14C	
NAD 83 (SURFACE LOCATION)	NAD 83 (BOTTOM HOLE)
LATITUDE = 39.425656°	LATITUDE = 39.425534°
LONGITUDE = 107.761942°	LONGITUDE = 107.760885°
MCU FEE 22-12A	
NAD 83 (SURFACE LOCATION)	NAD 83 (BOTTOM HOLE)
LATITUDE = 39.425656°	LATITUDE = 39.430617°
LONGITUDE = 107.762000°	LONGITUDE = 107.766901°
MCU 22-13A	
NAD 83 (SURFACE LOCATION)	NAD 83 (BOTTOM HOLE)
LATITUDE = 39.425656°	LATITUDE = 39.427590°
LONGITUDE = 107.762059°	LONGITUDE = 107.766848°
MCU 22-13C	
NAD 83 (SURFACE LOCATION)	NAD 83 (BOTTOM HOLE)
LATITUDE = 39.425656°	LATITUDE = 39.425718°
LONGITUDE = 107.762117°	LONGITUDE = 107.766849°

MCU FEE 22-16A	
NAD 83 (SURFACE LOCATION)	NAD 83 (BOTTOM HOLE)
LATITUDE = 39.425678°	LATITUDE = 39.427196°
LONGITUDE = 107.761738°	LONGITUDE = 107.754758°
MCU FEE 22-9C	
NAD 83 (SURFACE LOCATION)	NAD 83 (BOTTOM HOLE)
LATITUDE = 39.425678°	LATITUDE = 39.429161°
LONGITUDE = 107.761796°	LONGITUDE = 107.755226°
MCU 22-14B	
NAD 83 (SURFACE LOCATION)	NAD 83 (BOTTOM HOLE)
LATITUDE = 39.425678°	LATITUDE = 39.426468°
LONGITUDE = 107.761855°	LONGITUDE = 107.760835°
MCU FEE 22-10A	
NAD 83 (SURFACE LOCATION)	NAD 83 (BOTTOM HOLE)
LATITUDE = 39.425678°	LATITUDE = 39.430154°
LONGITUDE = 107.761913°	LONGITUDE = 107.759555°
MCU FEE 22-11A	
NAD 83 (SURFACE LOCATION)	NAD 83 (BOTTOM HOLE)
LATITUDE = 39.425678°	LATITUDE = 39.428333°
LONGITUDE = 107.761971°	LONGITUDE = 107.760965°
MCU FEE 22-12B	
NAD 83 (SURFACE LOCATION)	NAD 83 (BOTTOM HOLE)
LATITUDE = 39.425678°	LATITUDE = 39.429424°
LONGITUDE = 107.762030°	LONGITUDE = 107.766826°
MCU FEE 22-12C	
NAD 83 (SURFACE LOCATION)	NAD 83 (BOTTOM HOLE)
LATITUDE = 39.425678°	LATITUDE = 39.428531°
LONGITUDE = 107.762088°	LONGITUDE = 107.766922°
MCU 22-13B	
NAD 83 (SURFACE LOCATION)	NAD 83 (BOTTOM HOLE)
LATITUDE = 39.425678°	LATITUDE = 39.426656°
LONGITUDE = 107.762146°	LONGITUDE = 107.766933°

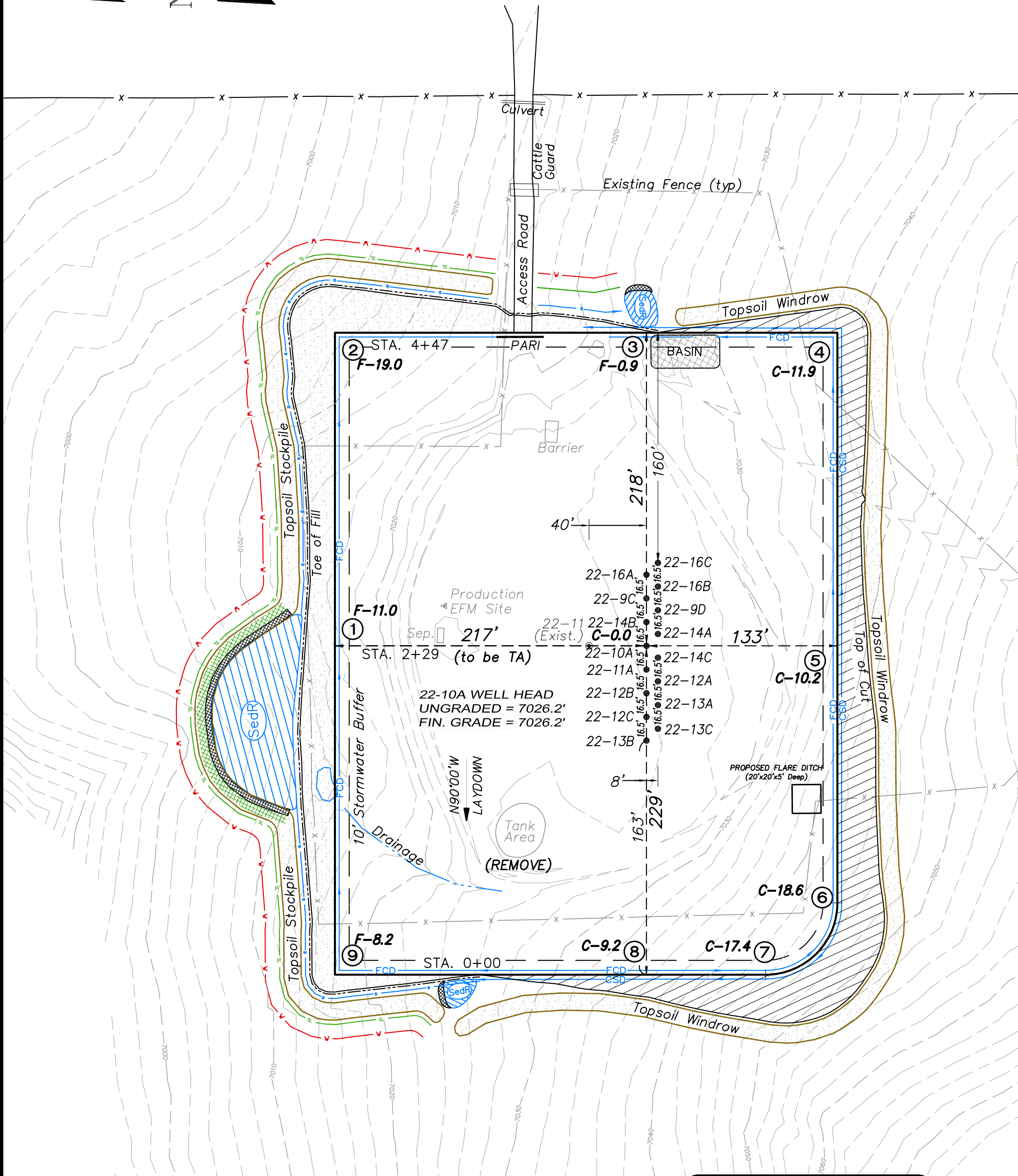
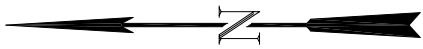


906 Main Street
Evanston, Wyoming 82930
Phone No. (307) 789-4545

<i>Interference Plat</i>		SHEET 2a OF 10
Project No.	11-04-54	
Date Drawn:	8/24/11	
Date Surveyed:	5/18/11	
Latest Revision	8/26/11	

Encana Oil & Gas (USA) Inc.
N22W Well Pad

SE1/4 SW1/4, SECTION 22, T7S, R93W, 6th P.M.
WELL PAD LAYOUT

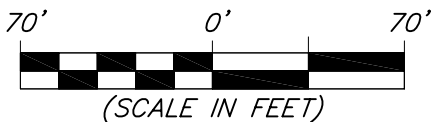


Total Surface Disturbance = 5.58 Acres
(See Sheet 4 for Details)

- NOTES:
- (1) Slope Track and/or Terrace all Slopes and Piles
 - (2) Erosion Control & Seed Topsoil
 - (3) Erosion Control & Seed Outside
 - (4) Slope away from Substructure Areas 1% to 3% to Flow Control

- LEGEND
- SL = SLASH
 - ST = SEDIMENT TRAP
 - SedR = SEDIMENT RESERVOIR
 - R.O.D. = RUN-ON DIVERSION
 - W = PERIMETER CONTROL (WATTLES)
 - CSD = CUT SLOPE DIVERSION (BERM TOE OF CUT SLOPE)
 - D = FILL DIVERSION TO SEDIMENT TRAP
 - VCB = VEGETATION BUFFER (UNDISTURBED LAND INSIDE PC)
 - FCD = FLOW CONTROL DITCH
 - PARI = PAD/ACCESS ROAD INTERFACE
 - Level Spreader
 - TOE BERM (PLACED AT TOE OF ALL FILL SLOPES/STOCKPILES)
 - Topsoil Berm
 - Seed, ECB & FLEX

SURFACE DISTURBANCE (IN ACRES)	
Well Pad	3.6
Side Slopes	0.7
Stockpiles & Stormwater	1.28
TOTAL	5.58



(SCALE IN FEET)

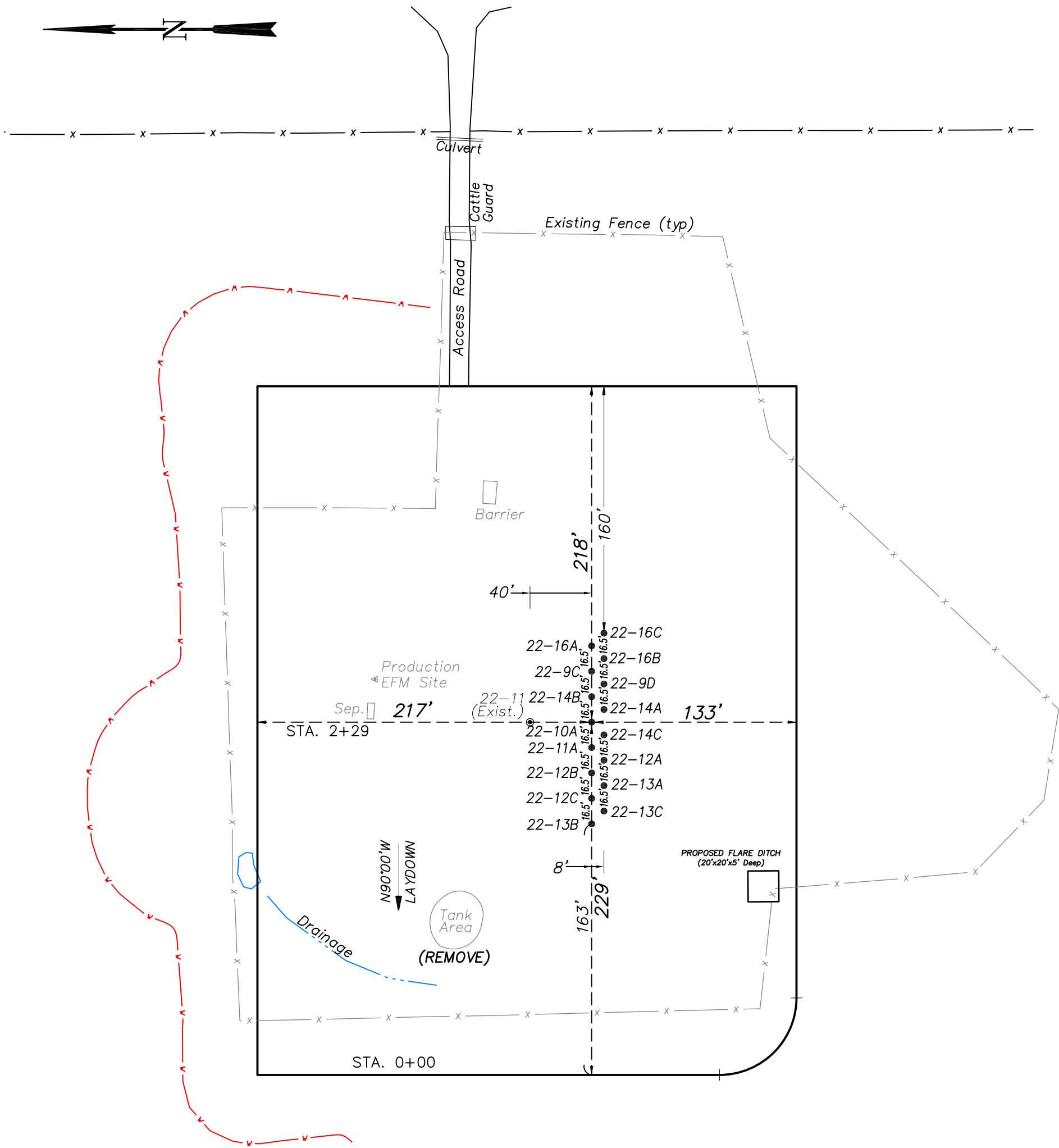


906 Main Street
Evanston, Wyoming 82930
Phone No. (307) 789-4545

Well Pad Layout		Scale: 1" = 70'	SHEET 3 OF 10
Project No.	11-04-54	Date Surveyed: 5/18/11	
Date Drawn: 8/24/11		Latest Revision Date: 8/26/11	

Encana Oil & Gas (USA) Inc.
N22W Well Pad

SE1/4 SW1/4, SECTION 22, T7S, R93W, 6th P.M.
WELL PAD LAYOUT



Total Surface Disturbance = **5.58 Acres**
(See Sheet 4 for Details)

- NOTES:
- (1) Slope Track and/or Terrace all Slopes and Piles
 - (2) Erosion Control & Seed Topsoil
 - (3) Erosion Control & Seed Outside
 - (4) Slope away from Substructure Areas 1% to 3% to Flow Control

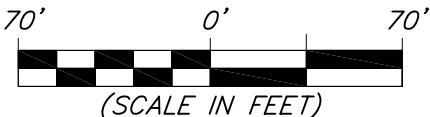
- LEGEND
- SL = SLASH
 - ST = SEDIMENT TRAP
 - SedR = SEDIMENT RESERVOIR
 - R.O.D. = RUN-ON DIVERSION
 - W = PERIMETER CONTROL (WATTLES)
 - CSD = CUT SLOPE DIVERSION (BERM TOE OF CUT SLOPE)
 - D = FILL DIVERSION TO SEDIMENT TRAP
 - VCB = VEGETATION BUFFER (UNDISTURBED LAND INSIDE PC)
 - FCD = FLOW CONTROL DITCH
 - PARI = PAD/ACCESS ROAD INTERFACE
 - LEVEL SPREADER
 - TOE BERM (PLACED AT TOE OF ALL FILL SLOPES/STOCKPILES)
 - TOPSOIL BERM
 - SEED, ECB & FLEX

PRE-CONSTRUCTION PHASE COMPLETE,
AUTHORIZATION TO CONTINUE
CONSTRUCTION.

SIGNATURE: _____



906 Main Street
Evanston, Wyoming 82930
Phone No. (307) 789-4545



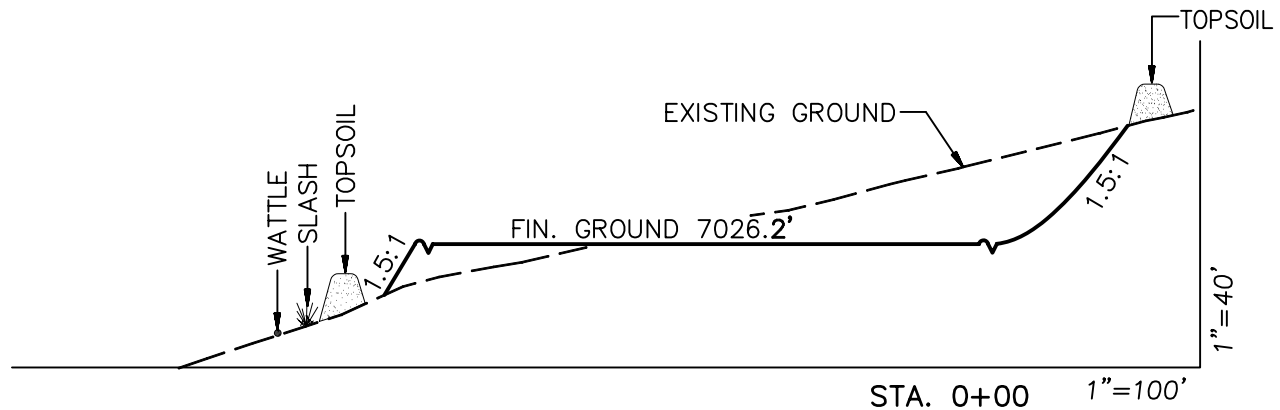
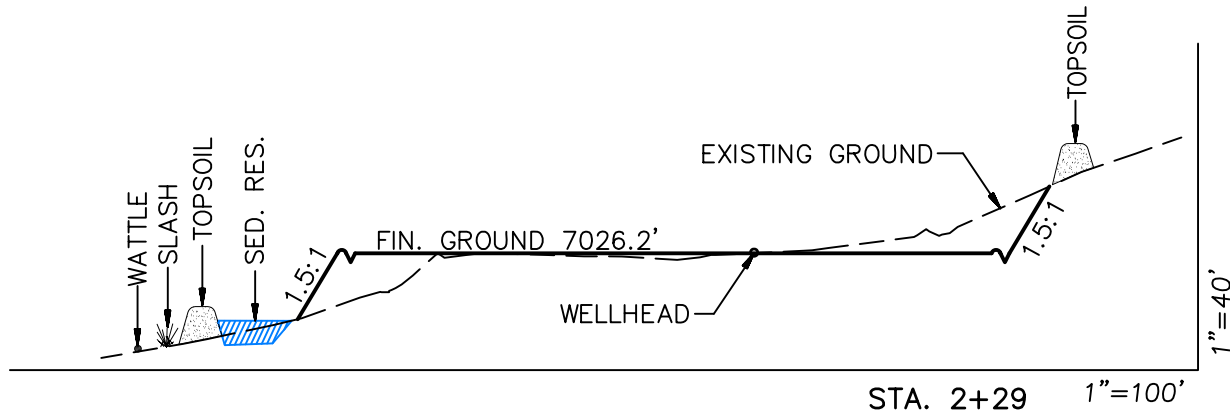
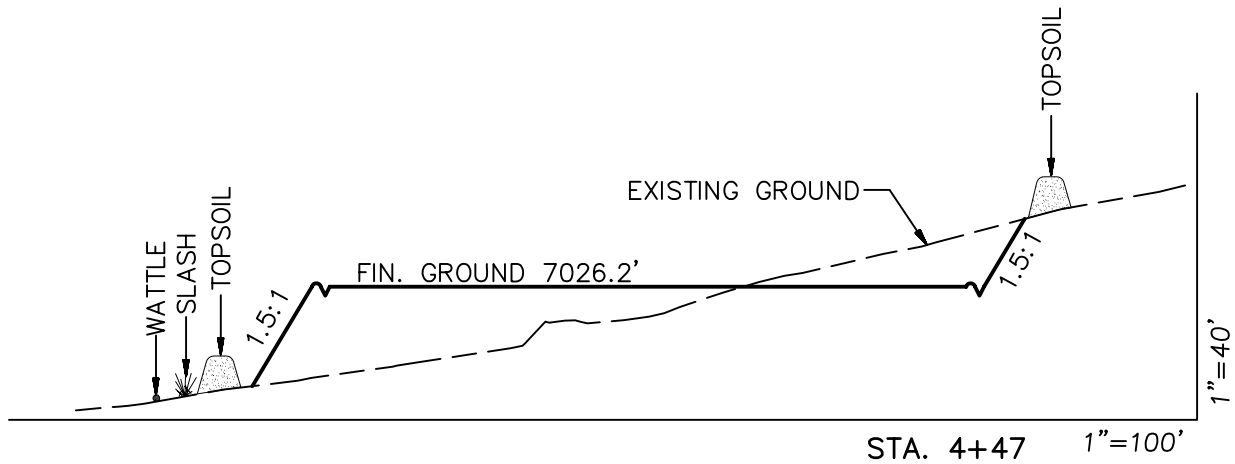
Pre-Construction		Scale: 1" = 70'	
Project No.	11-04-54	Date Surveyed:	5/18/11
Date Drawn:	8/24/11	Latest Revision Date:	8/26/11

SHEET
3a
OF 10

Encana Oil & Gas (USA) Inc.

N22W Well Pad

CROSS SECTIONS



SURFACE DISTURBANCE (IN ACRES)

Well Pad	3.6
Side Slopes	0.7
Stockpiles & Stormwater	1.28
TOTAL	5.58

NOTE:
ALL CUT AND FILL
SLOPES ARE AT 1.5:1
UNLESS OTHERWISE
NOTED.

EARTHWORK QUANTITIES

(in Cubic Yards w/ 0% shrink/swell)

ITEM	CUT	FILL	6" TOPSOIL	EXCESS
PAD	17442	16673	Topsoil not included in Excavation	769
PIT	0	0		0
TOTALS	17442	16673	3477	769

Cross Sections

Project No. 11-04-54
Date Drawn: 8/24/11

Scale: As Shown

Date Surveyed: 5/18/11
Latest Revision Date: 8/26/11

SHEET

4

OF 10

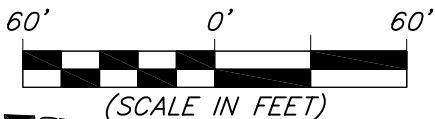
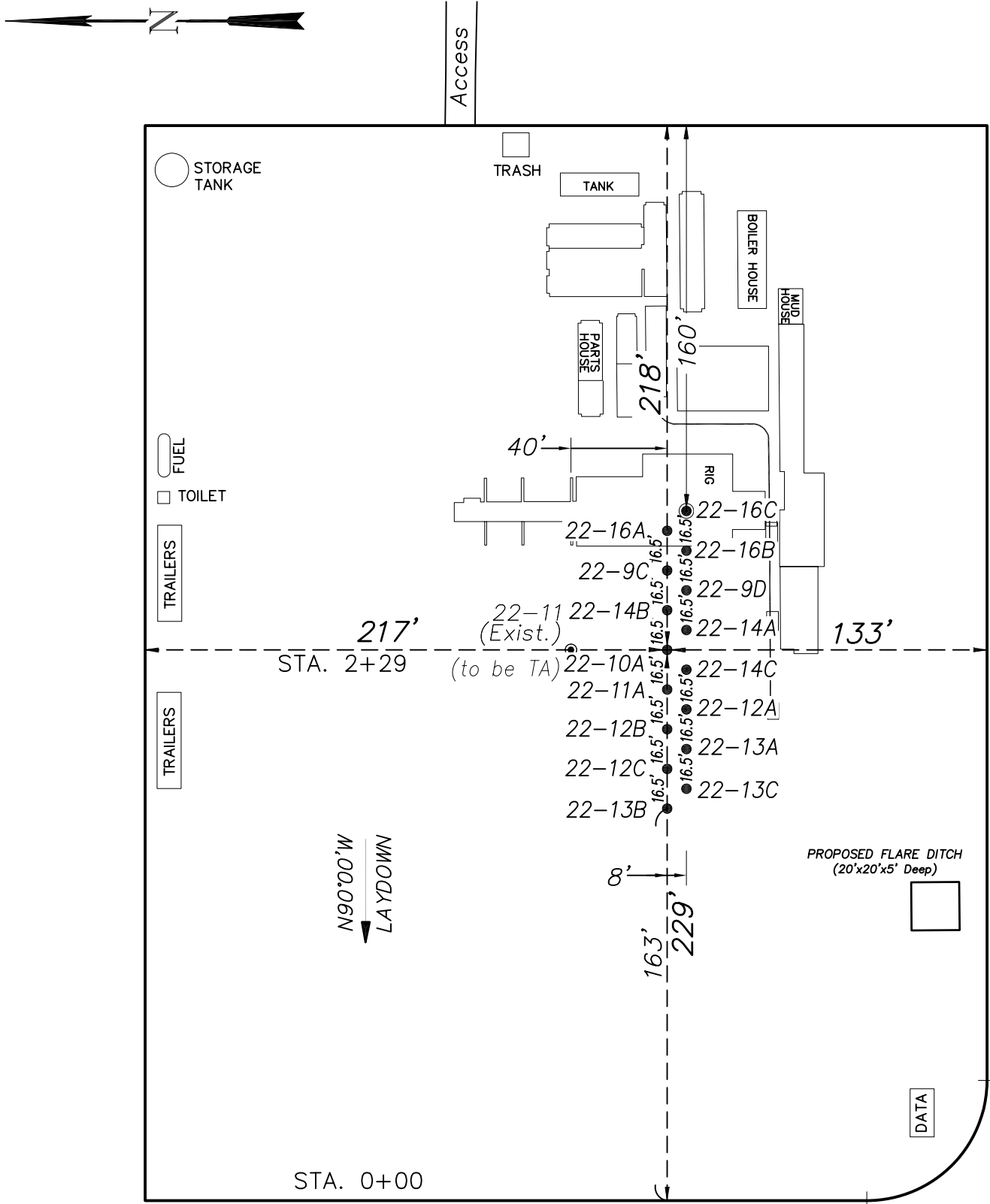


906 Main Street
Evanston, Wyoming 82930
Phone No. (307) 789-4545

Encana Oil & Gas (USA) Inc.

N22W Well Pad

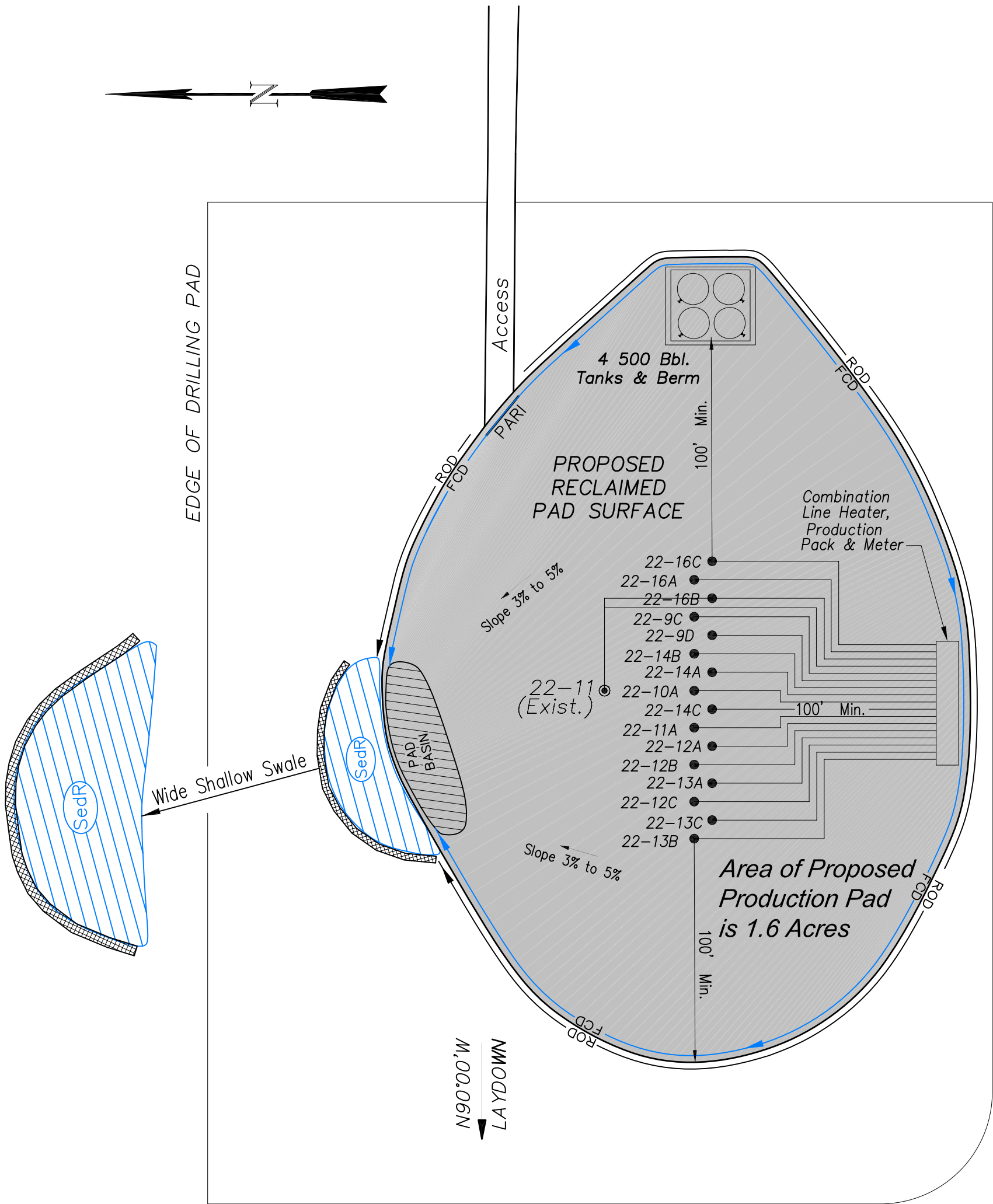
TYPICAL RIG LAYOUT



906 Main Street
Evanston, Wyoming 82930
Phone No. (307) 789-4545

Rig Layout		Scale: 1" = 60'	SHEET 5 OF 10
Project No.	11-04-54	Date Surveyed: 5/18/11	
Date Drawn: 8/24/11	Latest Revision Date: 8/26/11		

Encana Oil & Gas (USA) Inc.
N22W Well Pad
PRODUCTION SCHEMATIC



NOTES:

1. Set Tanks High so pad Entrance & Tank Area Can Drain to Pad Basin
2. Gravel Pad 75' from Wells & Around Tanks and Separators
3. Pad Drains to Pad Basin at a 3% to 5% slope
4. BMP Selection and Position may change Depending on Actual Conditions Encountered During the Construction Process

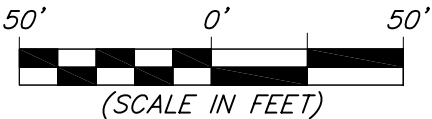
NOTE:
Actual Equipment Layout and Reclaimed Pad Surface Area May Change due to Production Requirements or Site Conditions.

ESTIMATED AREAS
RECLAIMED AREA: 4.0 ACRES
UNRECLAIMED AREA: 1.6 ACRES
(PRODUCTION PAD)

- LEGEND
- SedR = SEDIMENT RESERVOIR
 - R.O.D. = RUN-ON DIVERSION
 - W- = PERIMETER CONTROL (WATTLES)
 - CSD = CUT SLOPE DIVERSION (BERM TOE OF CUT SLOPE)
 - D = FILL DIVERSION TO SEDIMENT TRAP
 - VCB = VEGETATION BUFFER (UNDISTURBED LAND INSIDE PC)
 - FCD = FLOW CONTROL DITCH
 - PARI = PAD/ACCESS ROAD INTERFACE
 - [Pattern] = LEVEL SPREADER
 - [Pattern] = SEED, ECB & FLEX

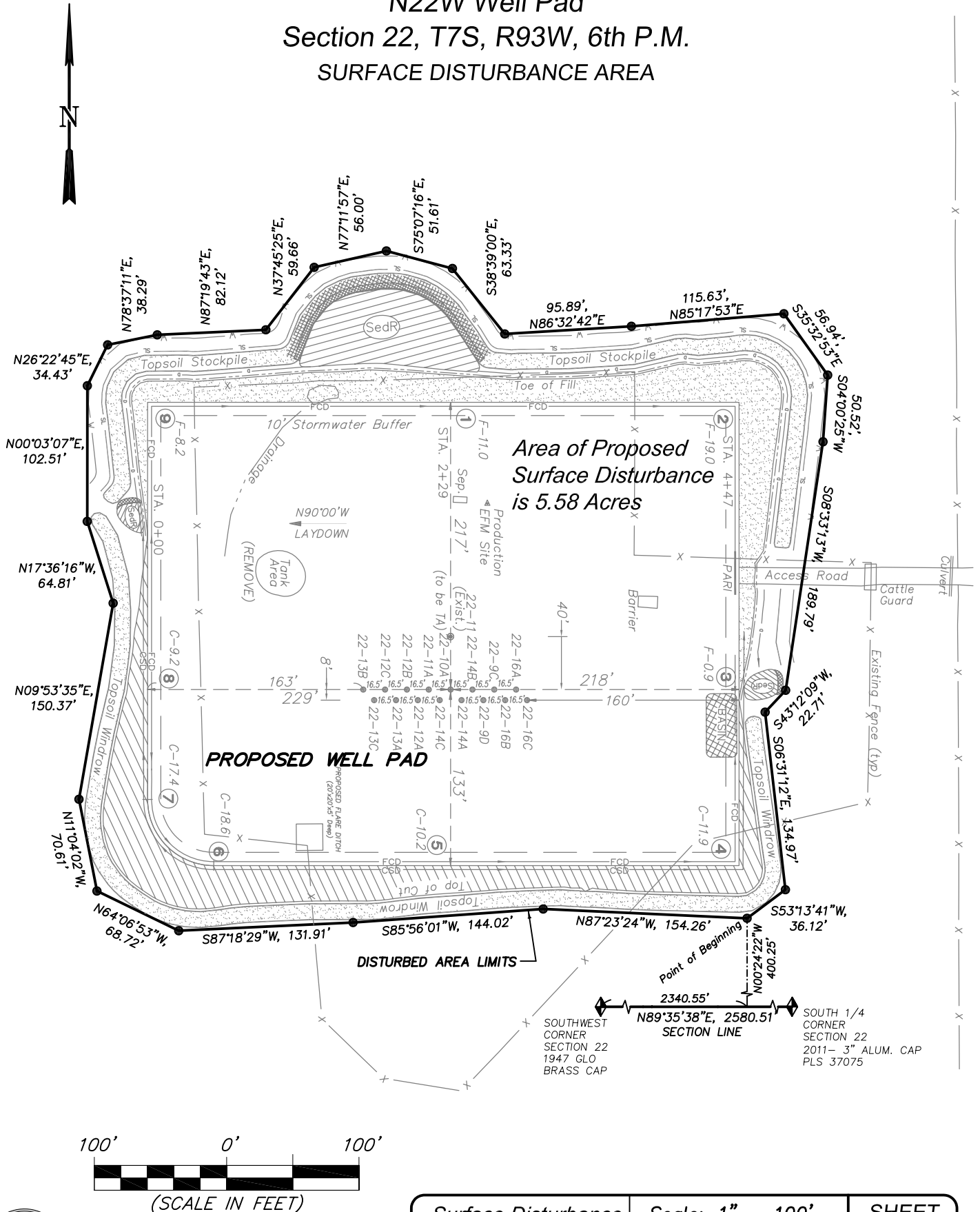


906 Main Street
Evanston, Wyoming 82930
Phone No. (307) 789-4545



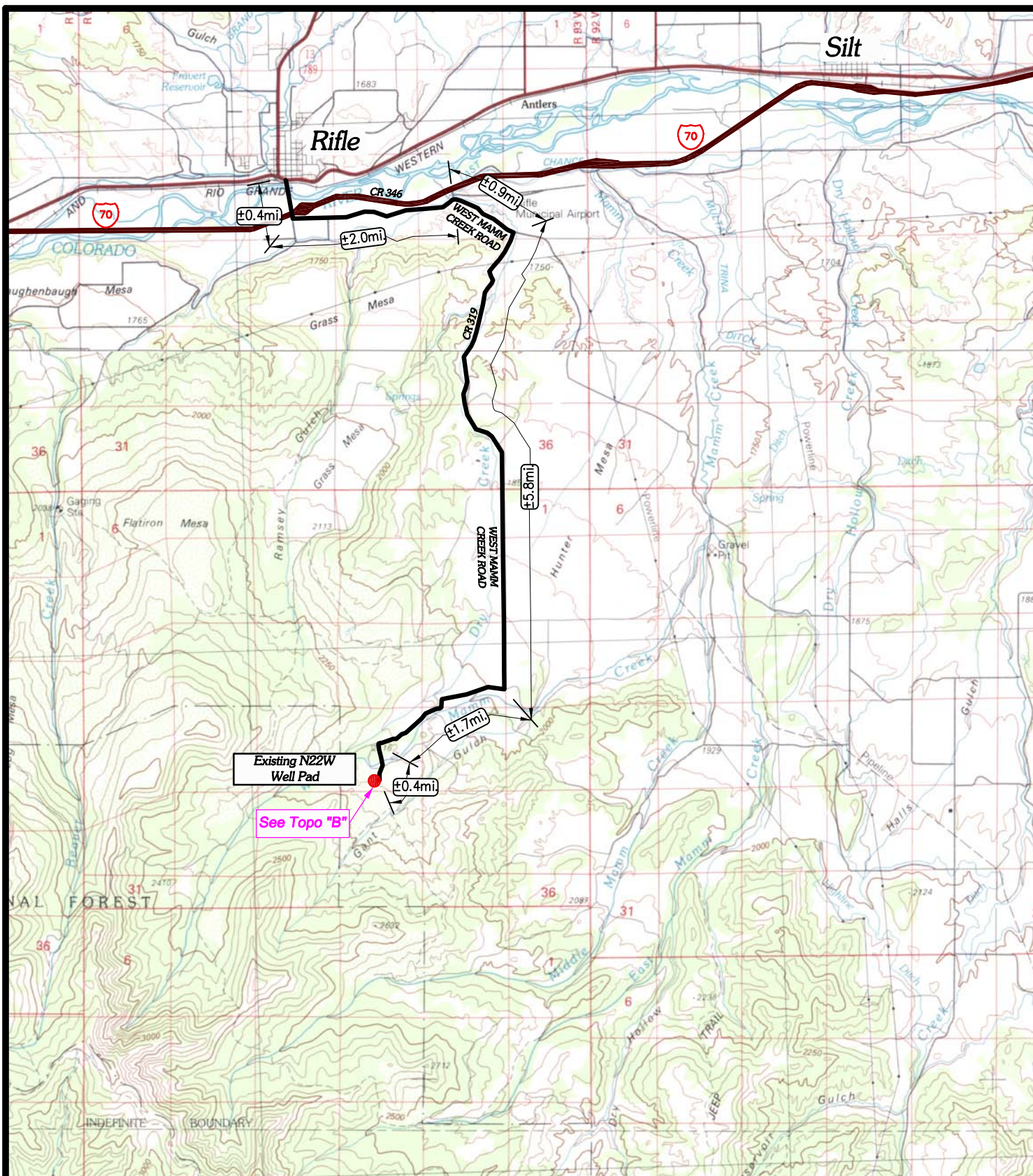
Production Schematic		Scale: 1" = 50'	SHEET 6 OF 10
Project No.	11-04-54	Date Surveyed: 5/18/11	
Date Drawn: 8/24/11		Latest Revision Date: 8/26/11	

Encana Oil & Gas (USA) Inc.
N22W Well Pad
Section 22, T7S, R93W, 6th P.M.
SURFACE DISTURBANCE AREA



906 Main Street
 Evanston, Wyoming 82930
 Phone No. (307) 789-4545

Surface Disturbance		Scale: 1" = 100'	SHEET 7 OF 10
Project No.	11-04-54	Date Surveyed: 5/18/11	
Date	8/24/11	Latest Revision	
Drawn:	8/26/11	Date:	



LEGEND

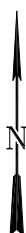
- EXISTING LOCATION
- EXISTING ROAD

EnCana Oil & Gas (USA) Inc.

N22W Well Pad-Access Route
SECTION 22, T7S, R93W, 6th, P.M.
GARFIELD COUNTY, COLORADO



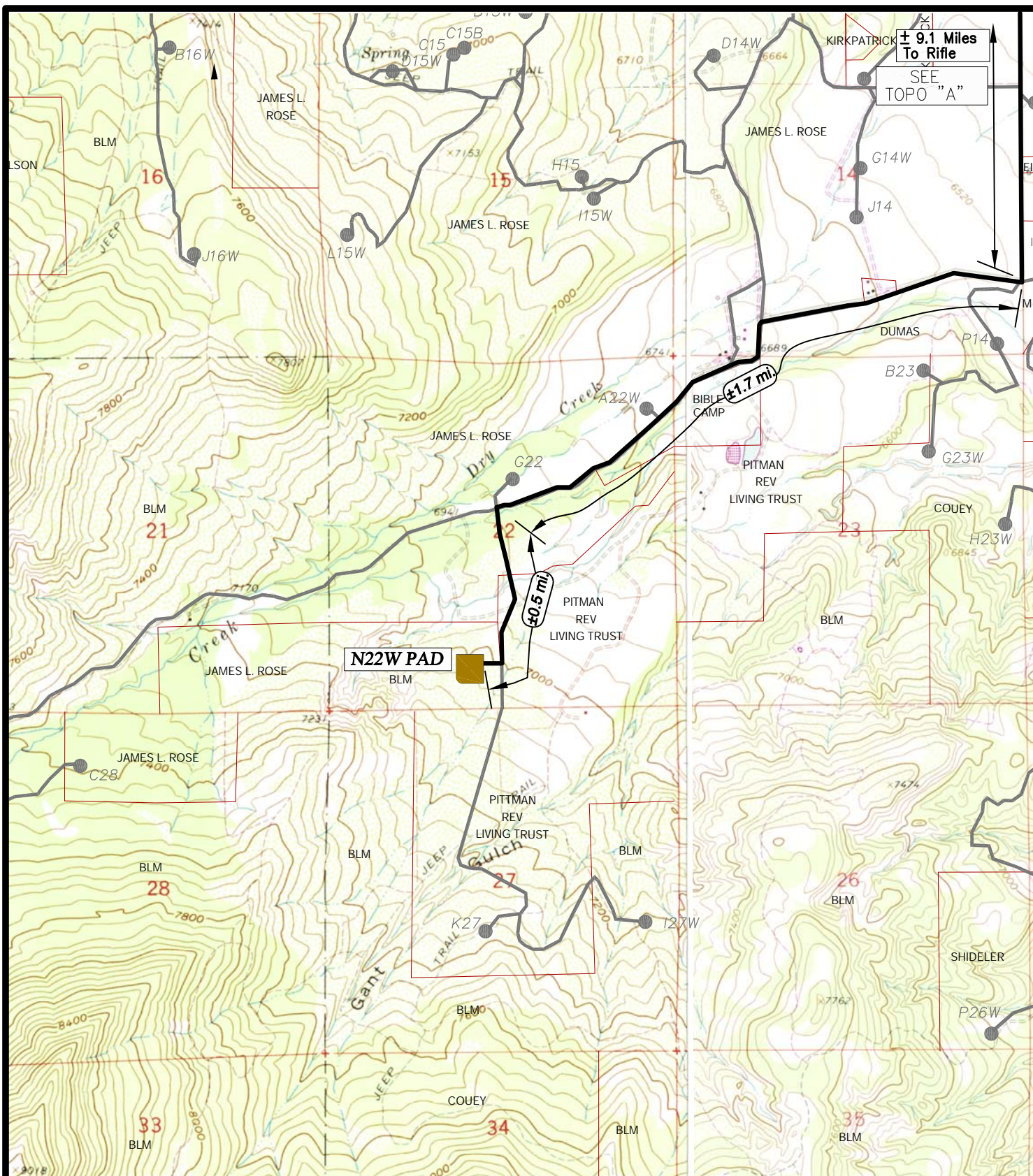
Wasatch Surveying Associates
906 Main Street Evanston, Wyoming 82930
Phone No. (307) 789-4545 Fax 307-789-5722



TOPO A

PROJECT NUMBER
11-04-54
DATE: 5/31/11
SCALE: 1:100,000

8
of 10

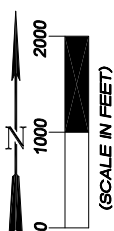


LEGEND

- EXISTING ROAD
- EXISTING WELL PAD TO BE UPGRADED



Wasatch Surveying Associates
 906 Main Street Evanston, Wyoming 82930
 Phone No. (307) 789-4545 Fax 307-789-5722



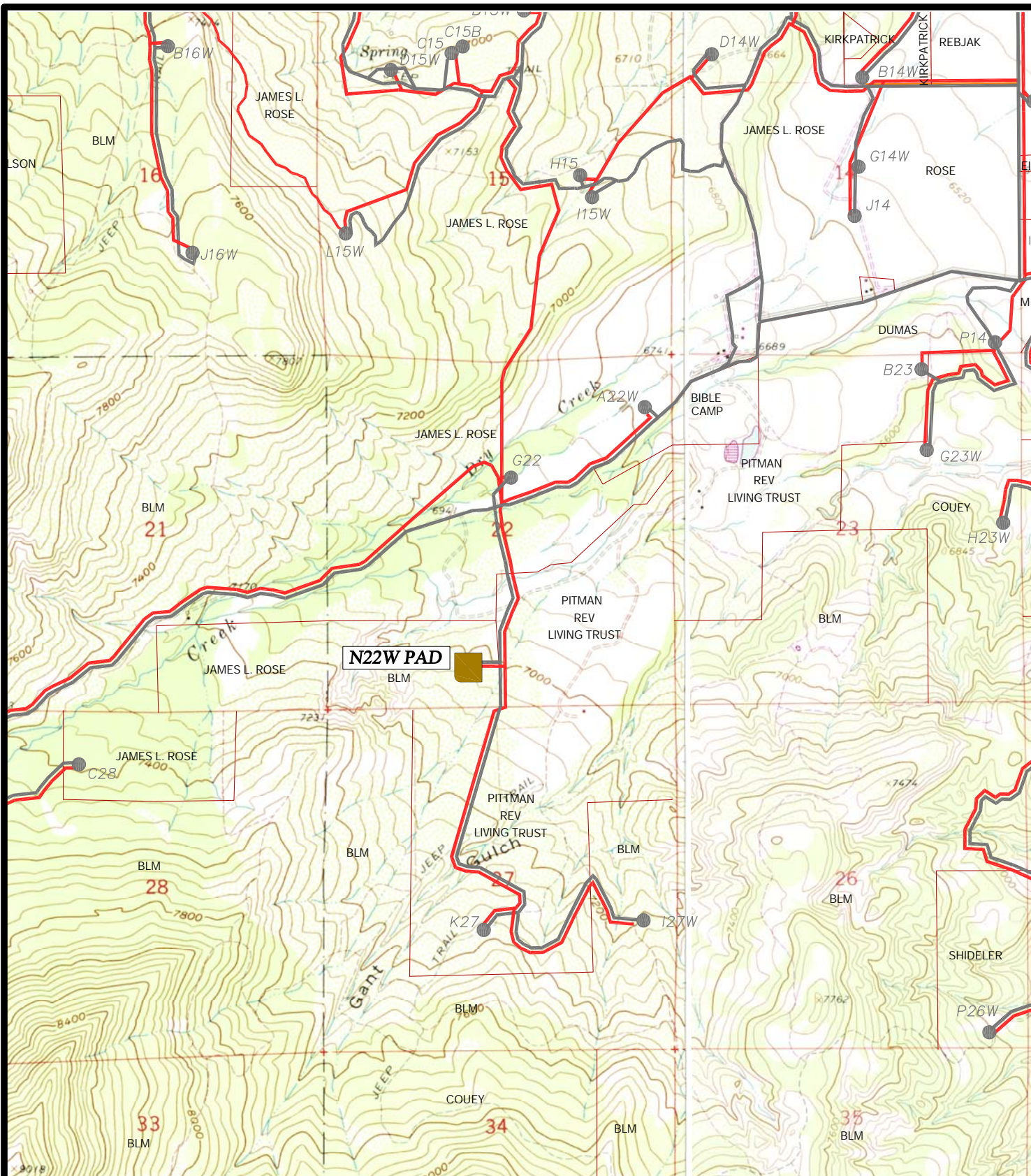
EnCana Oil & Gas (USA) Inc.

N22W Well Pad-Access Route
 SECTION 22, T7S, R93W, 6th, P.M.
 GARFIELD COUNTY, COLORADO

TOPO B

PROJECT NUMBER
11-04-54
 DATE: 5/31/11
 SCALE: 1" = 2000'

9
 of 10

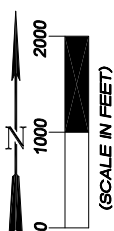


LEGEND

- EXISTING PIPELINE
- EXISTING ROAD
- EXISTING WELL PAD TO BE UPGRADED



Wasatch Surveying Associates
 906 Main Street Evanston, Wyoming 82930
 Phone No. (307) 789-4545 Fax 307-789-5722



EnCana Oil & Gas (USA) Inc.

N22W Well Pad-Pipeline Route
 SECTION 22, T7S, R93W, 6th, P.M.
 GARFIELD COUNTY, COLORADO

TOPO D

PROJECT NUMBER
 11-04-54
 DATE: 8/17/11
 SCALE: 1" = 2000'

10
 of 10



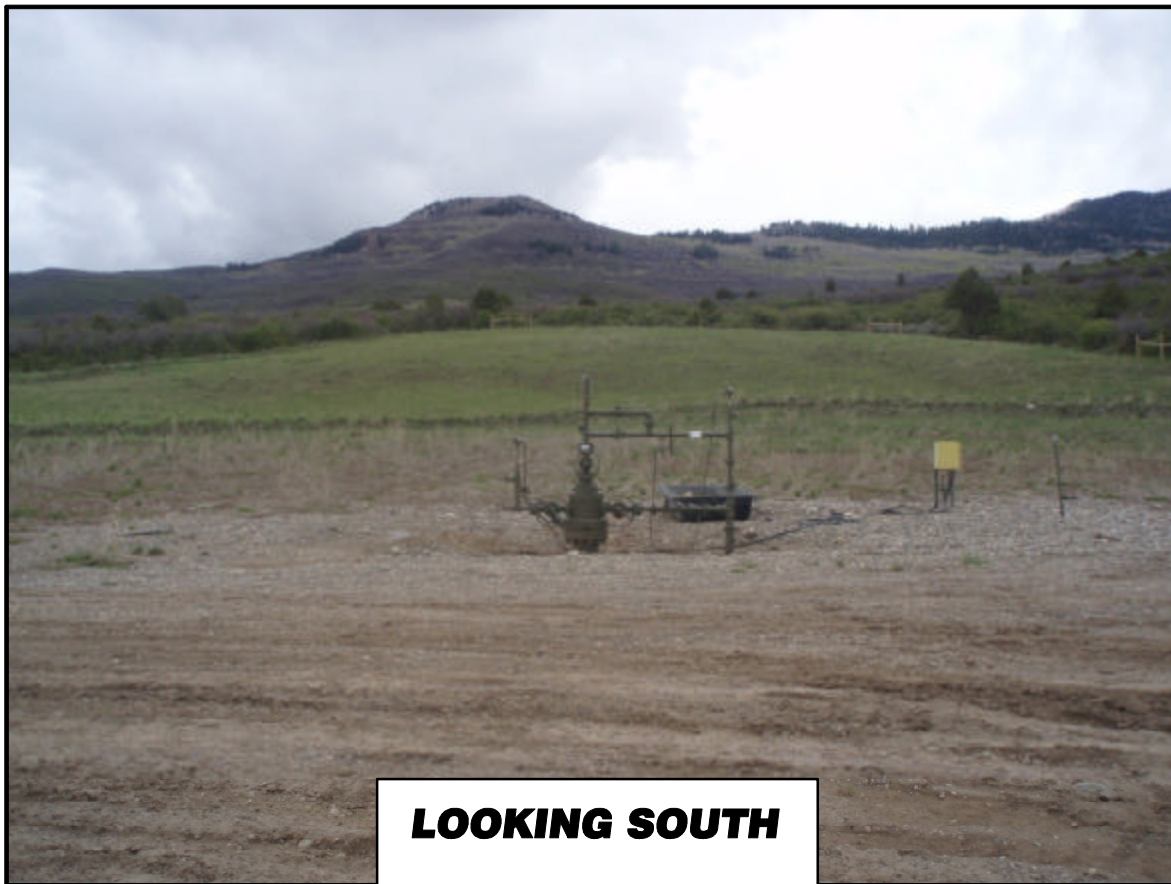
LOOKING NORTH

*EnCana Oil & Gas (USA) Inc.
N22W Well Pad
Section 22, T7S, R93W, 6th P.M.*

*Date Taken:
05/18/11*



LOOKING EAST



LOOKING SOUTH

*EnCana Oil & Gas (USA) Inc.
N22W Well Pad
Section 22, T7S, R93W, 6th P.M.*

*Date Taken:
05/18/11*



LOOKING WEST

EnCana Oil & Gas (USA) Inc

N22W Driving Directions

Beginning in the Town of Rifle, Colorado and traveling South on Hwy 13 approx. 0.4 miles; turn left (East) on County Road 346 (Airport Road). Continue on CR 346 for 2.0 miles to County Road 319. Turn Right (Southeast) on County Road 319 (West Mamm Creek Road) and continue traveling Southeasterly for Approx. 0.9 miles to a fork in the road. Turn Right (South) and continue on West Mamm Creek Road for approximately 5.8 Miles. Turn right (West) and continue traveling on West Mamm Creek Road for approximately 1.7 Miles to an existing oil and gas road. Turn Left (South) and continue Southerly on the existing oil and gas road for 0.5 Miles. Turn right (West) onto the access road for the existing N22W Well Pad.