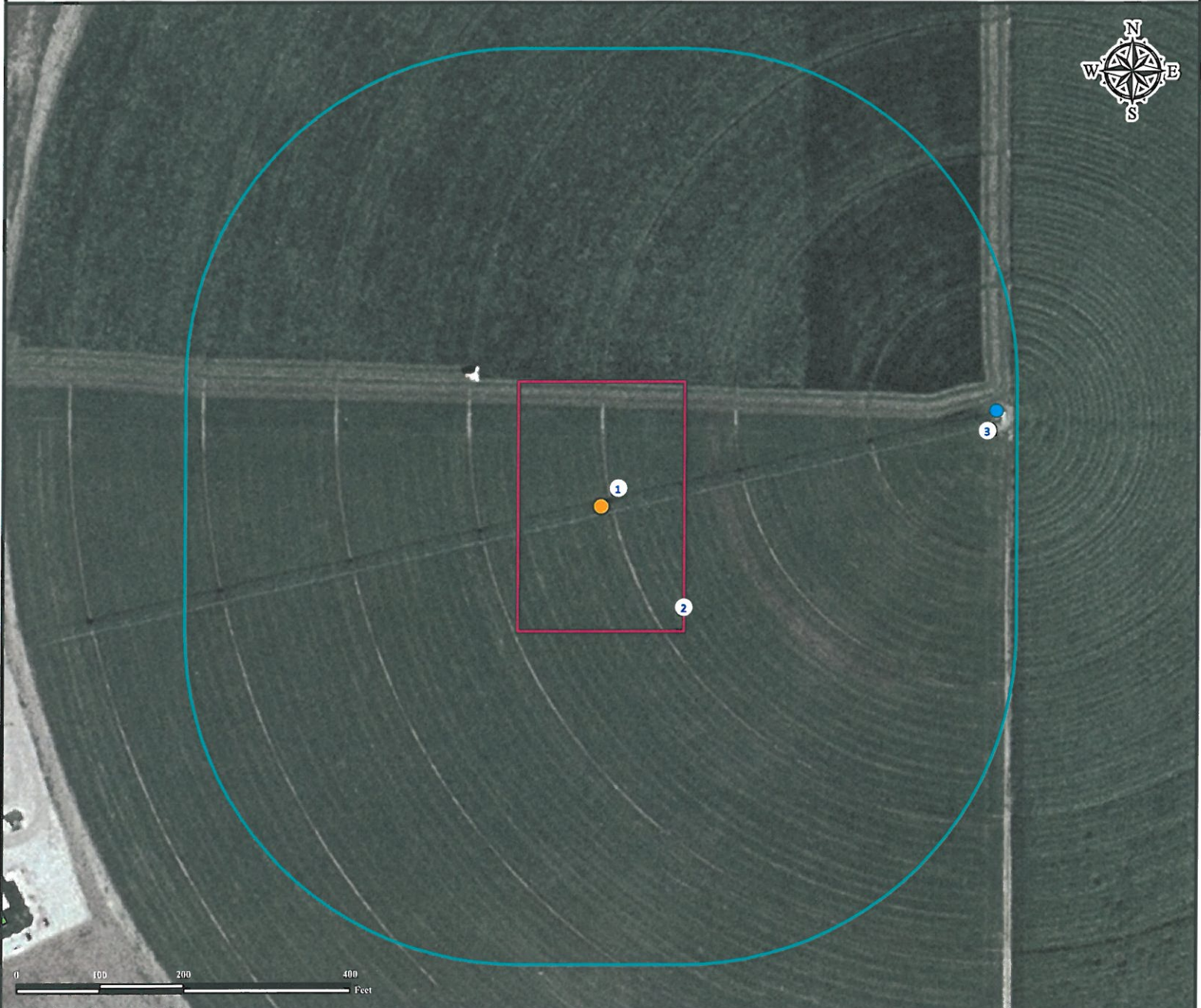


Location Drawing

CAMERON 19-15

NW¼ SW¼ SECTION 15, TOWNSHIP 7 NORTH, RANGE 65 WEST OF THE 6TH PRINCIPAL MERIDIAN



- 1. Proposed well CAMERON 19-15.
- 2. Operational Disturbance Area.
- 3. Center Pivot is ±488' NE.


Legend

- Proposed Well
- ▭ Disturbance Area
- Center Pivot
- 400' Radius

Reference Location

** All Measurements are Made from Reference Well CAMERON 19-15 **
 Lat: 40.571075° Long: -104.655398° (NAD83)
 Elevation: 4849 Feet

Surface Use: Irrigated Crop



Use our resources to find yours!
www.petro-fs.com
 (303) 928-7128

Field Date: 10/11/2011
 Drafting Date: 10/25/2011
 Drafter: KLM
 Checked By: BHF

Data Sources:
 - Aerial courtesy of NAIP (2009)

Prepared for:



BAYSWATER
 EXPLORATION AND PRODUCTION, LLC