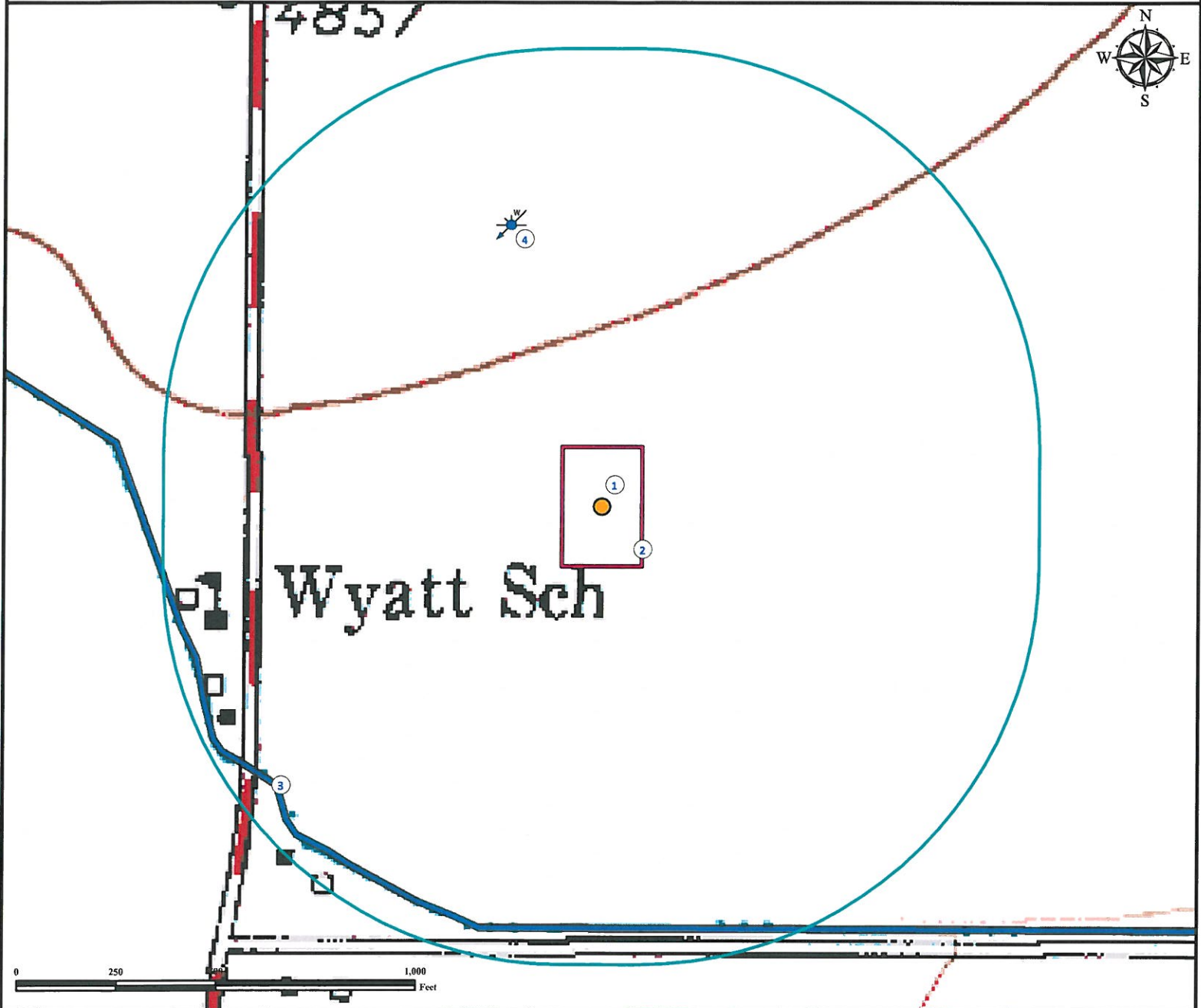


Hydrology Map CAMERON 19-15

NW¼ SW¼ SECTION 15, TOWNSHIP 7 NORTH, RANGE 65 WEST OF THE 6TH PRINCIPAL MERIDIAN



- 1. Proposed well CAMERON 19-15.
- 2. Operational Disturbance Area.
- 3. Canal (NHD) is 1072' SW. Feature not in this location per field verify.
- 4. Water well is ±748' NW. Feature not in this location per field verify.

Legend Proposed Well Disturbance Area NHD Canal Water Well 1000' Radius	Reference Location ** All Measurements are Made from Reference Well CAMERON 19-15 ** Lat: 40.571075° Long: -104.655398° (NAD83) Elevation: 4849 Feet
---	--

Use our resources to find yours!
www.petro-fs.com
 (303) 928-7128

Field Date: 10/11/2011 Drafting Date: 10/25/2011 Drafter: KLM Checked By: BHF	Data Sources: TOPO courtesy USGS Water wells courtesy CDOWR Water Lines courtesy National Hydrology Database (NHD)
--	--

Prepared for:
BAYSWATER
 EXPLORATION AND PRODUCTION, LLC