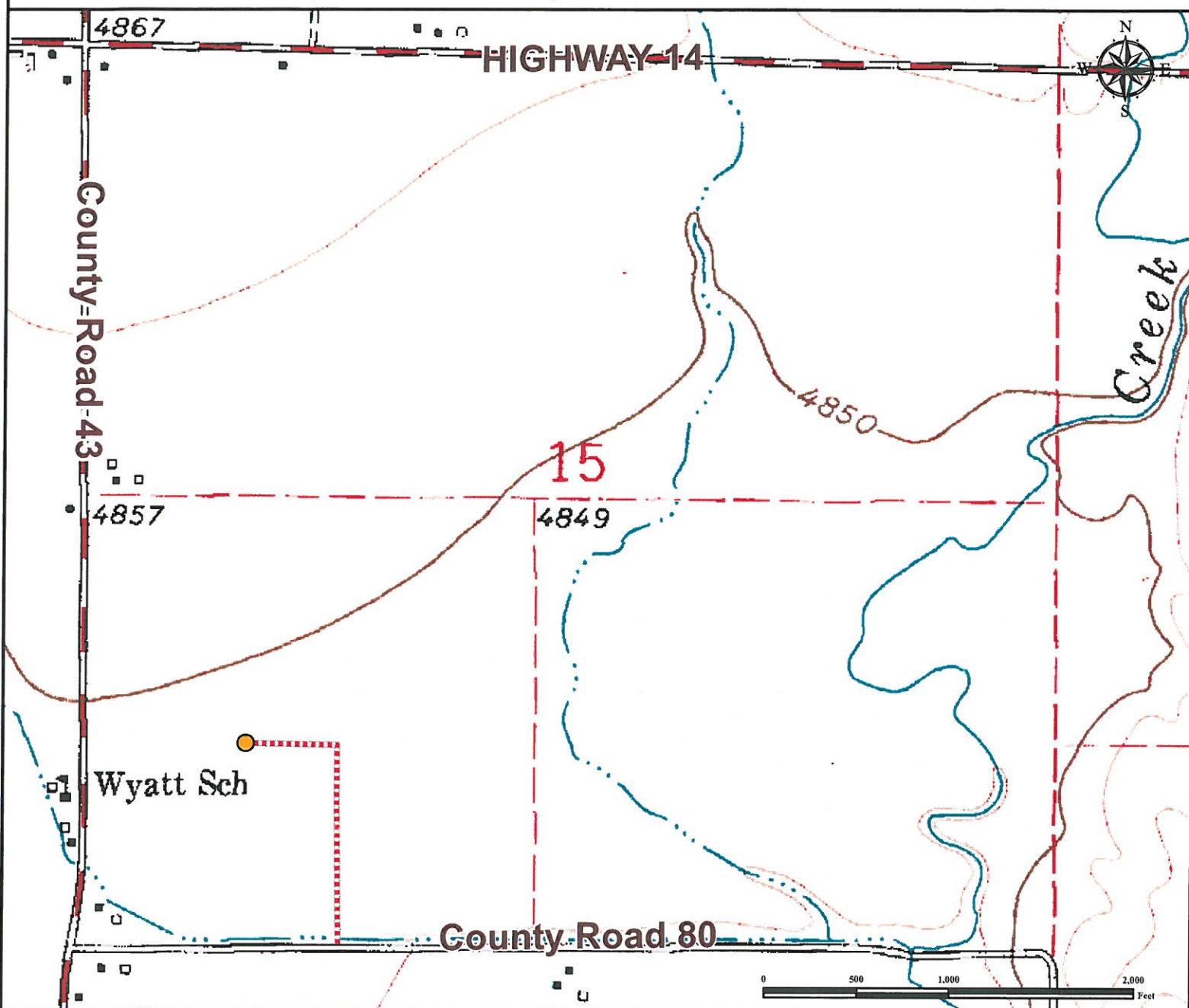


# Access Road Map

## CAMERON 19-15

NW¼ SW¼ SECTION 15, TOWNSHIP 7 NORTH, RANGE 65 WEST OF THE 6TH PRINCIPAL MERIDIAN



**From Ault, CO:** From the intersection of US Highway 85 and CO Highway 14 proceed East on Highway 14  $\pm 3.8$  miles to CR 43.

Turn Right onto county road 43 and continue South  $\pm 1.0$  miles to County Road 80.

Turn Left onto County Road 80 and continue East  $\pm 0.3$  miles to proposed access road.

Turn Left onto proposed access road and continue North  $\pm 0.2$  miles, follow road as it turns West and continue  $\pm 0.09$  miles to proposed well.

Total distance from Ault, CO to proposed well location is  $\pm 5.39$  miles to proposed well location.

### Legend

● Proposed Well

---- Proposed Access Road

### Reference Location

\*\* All Measurements are Made from  
Reference Well CAMERON 19-15 \*\*

Lat: 40.571075° Long: -104.655398° (NAD83)  
Elevation: 4849 Feet



Use our resources to find yours!  
[www.petro-fs.com](http://www.petro-fs.com)  
(303) 928-7128

Field Date: 10/11/2011  
Drafting Date: 10/25/2011  
Drafter: KLM  
Checked By: BHF

Data Sources:  
- TOPO courtesy of USGS

Prepared for:

 **BAYSWATER**  
EXPLORATION AND PRODUCTION, LLC