

Downhole Schematic for SGU 8502C-36 B36 496



Project :North Piceance

Area : Story Gulch

As Of : 09/15/2011

API # :05045198250000

County :

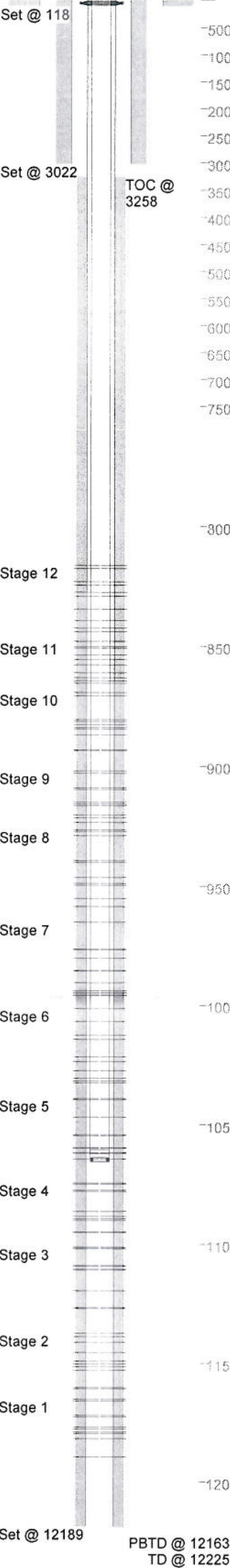
Surface Location :

BHL :

GL : ft

KB to GL : 22.0 ft

KB : ft



Casing Details		Hole	Casing	Mass	Set At	Length	Thread	Grade	Description
Section	Conductor	30.000	20	0	118	120			Line Pipe
Surface		14.750		0	3,022	2	LT&C		Float Shoe
			9.625	36	3,021	44	LT&C	J55	Casing
				0	2,976	2	LT&C		Float Collar
			9.625	36	2,975	175	LT&C	J55	Casing
				0	2,800	2	LT&C		Parasite sub
			9.625	36	2,798	1,403	LT&C	J55	Casing
				0	1,395	2	LT&C		Port Collar
			9.625	36	1,393	1,363	LT&C	J55	Casing
				0	30	6	LT&C		Mandrel
9.625	36	24	27	LT&C	J-55	Landing jt			
Production		7.875	5.0	0	12,189	2	Butt	P-110	Guide Shoe
			4.5	11.6	12,188	22	Butt	P-110	Short Jt. A
			5.0	0	12,165	2	Butt	P-110	Float Collar
			4.5	11.6	12,164	1,423	Butt	P-110	Casing
			4.5	11.6	10,741	20	Butt	P-110	Marker jt B
			4.5	11.6	10,721	2,803	Butt	P-110	Casing
			4.5	11.6	7,919	21	Butt	P-110	Marker jt C
			4.5	11.6	7,897	7,922	Butt	P-110	Casing
Cement Details		Sequence	Top	Density	Blend / Additives				
Section	Surface	Lead	0	8.6	Mud Push II / 49 water+250 lbsD182+1372 lbs D031				
		Lead	0	9.0	9.0 LiteCRETE / LiteCRETE				
Production	Lead		3,258	12.0	blend=0.8%D079+0.8%D065+0.5%D013+0.2%D046+0.25ppsD029				
					TXI / D049 cmt, 75.0 lb/sk BWOB, D079 Extender 1.0%BWOB, D112 fluid loss 0.1%BWOB, D013 retarder 0.9% BWOB, D046 anti foam 0.2% BWOB, D029 lost circ. control agent 0.25 lb/sk BWOB				
	Tail		7,598	13.0	Rockies Correct / D044 NaCl 5.0%BWOW, D D901 cement 80.0 lb/sk BWOB, D035 extender 11.0 lb/sk BWOB, D178 silica 35.0 BWOB, D020 extender 3.0%BWOB, D182 spcer concentrate 0.4% BWOB, D112 fluid loss 0.75% BWOB, D201 retarder 0.4% BWOB, D065 dispersant 0.2% BWOB, D046 anti foam 0.2% BWOB, D029 lost circ control agent 0.25 lb/sk BWOB				
Conductor	Lead		0	13.0	Control set C /				
Tubing and Downhole Equipment									
O.D.	Length	Depth	Description						
0.000	22.00	22.00	KB						
7.063	0.80	22.80	7 1/16" Woodgroup						
3.063	10.581.20	10,604.00	342 jts. 2 3/8" L80 4.7# USA Tenaris tbg.						
3.063	1.10	10,605.10	2 3/8" flag nipple						
3.063	31.30	10,636.40	1 jt. 2 3/8" L80 4.7# USA Tenaris tbg.						
3.063	1.10	10,637.50	2 3/8" Seating nipple						
3.063	10.10	10,647.60	2 3/8" L80 pup jt.						
Perforations									
Stage 1				Stage 4					
Date	From	To	Shots	Date	From	To	Shots		
07/29/2011	11,895	11,896	3	08/09/2011	10,952	10,953	3		
	11,819	11,820	3		10,949	10,950	3		
	11,797	11,798	3		10,900	10,901	3		
	11,791	11,792	3		10,893	10,894	3		
	11,777	11,778	3		10,883	10,884	3		
	11,770	11,771	3		10,863	10,864	3		
	11,727	11,728	3		10,778	10,779	3		
	11,721	11,722	3		10,773	10,774	3		
	11,660	11,661	3		10,748	10,749	3		
	11,653	11,654	3		10,743	10,744	3		
Stage 10				Stage 5					
Date	From	To	Shots	Date	From	To	Shots		
08/31/2011	8,937	8,938	3	08/10/2011	10,643	10,644	3		
	8,934	8,935	3		10,619	10,620	3		
	8,871	8,872	3		10,616	10,617	3		
	8,847	8,848	3		10,598	10,599	3		
	8,841	8,842	3		10,595	10,596	3		
	8,829	8,830	3		10,546	10,547	3		
	8,815	8,816	3		10,541	10,542	3		
	8,807	8,808	3		10,468	10,469	3		
	8,708	8,709	3		10,396	10,397	3		
	8,695	8,696	3		10,390	10,391	3		
Stage 11				Stage 6					
Date	From	To	Shots	Date	From	To	Shots		
08/31/2011	8,655	8,656	3	08/11/2011	10,325	10,326	3		
	8,645	8,646	3		10,317	10,318	3		
	8,632	8,633	3		10,306	10,307	3		
	8,612	8,613	3		10,274	10,275	3		
	8,578	8,579	3		10,237	10,238	3		
	8,556	8,557	3		10,216	10,217	3		
	8,537	8,538	3		10,144	10,145	3		
	8,508	8,509	3		10,126	10,127	3		
	8,502	8,503	3		10,068	10,069	3		
	8,480	8,481	3		10,015	10,016	3		
Stage 12				Stage 7					
Date	From	To	Shots	Date	From	To	Shots		
09/01/2011	8,440	8,441	3	08/13/2011	9,959	9,960	3		
	8,425	8,426	3		9,949	9,950	3		
	8,393	8,394	3		9,941	9,942	3		
	8,345	8,346	3		9,907	9,908	3		
	8,292	8,293	3		9,858	9,859	3		
	8,275	8,276	3		9,854	9,855	3		
	8,245	8,246	3		9,804	9,805	3		
	8,231	8,232	3		9,768	9,769	3		
	8,176	8,177	3		9,765	9,766	3		
	8,162	8,163	3		9,653	9,654	3		
Stage 2				Stage 8					
Date	From	To	Shots	Date	From	To	Shots		
08/01/2011	11,608	11,609	3	08/29/2011	9,587	9,588	3		
	11,603	11,604	3		9,553	9,554	3		
	11,530	11,531	3		9,497	9,498	3		
	11,515	11,516	3		9,490	9,491	3		
	11,504	11,505	3		9,466	9,467	3		
	11,491	11,492	3		9,402	9,403	3		
	11,455	11,456	3		9,395	9,396	3		
	11,412	11,413	3		9,291	9,292	3		
	11,388	11,389	3		9,273	9,274	3		
	11,375	11,376	3		9,266	9,267	3		
Stage 3				Stage 9					
Date	From	To	Shots	Date	From	To	Shots		
08/08/2011	11,271	11,272	3	08/30/2011	9,235	9,236	3		
	11,267	11,268	3		9,216	9,217	3		
	11,196	11,197	3		9,205	9,206	3		
	11,109	11,110	3		9,166	9,167	3		
	11,106	11,107	3		9,159	9,160	3		
	11,093	11,094	3		9,151	9,152	3		
	11,090	11,091	3		9,098	9,099	3		
	11,020	11,021	3		9,092	9,093	3		
	11,016	11,017	3		9,031	9,032	3		
	11,012	11,013	3		9,021	9,022	3		

Stage 6	10,015 - 10,326	30 - 0.420" shots	11,145 bbls slickwater
Stage 7	9653 - 9960	30 - 0.420" shots	9193 bbls slickwater
Stage 8	9266 - 9588	30 - 0.420" shots	9756 bbls slickwater
Stage 9	9021 - 9236	30 - 0.420" shots	11,289 bbls slickwater
Stage 10	8695 - 8938	30 - 0.420" shots	11,565 bbls slickwater
Stage 11	8480 - 8656	30 - 0.420" shots	15,868 bbls slickwater
Stage 12	8162 - 8441	30 - 0.420" shots	17,098 bbls slickwater