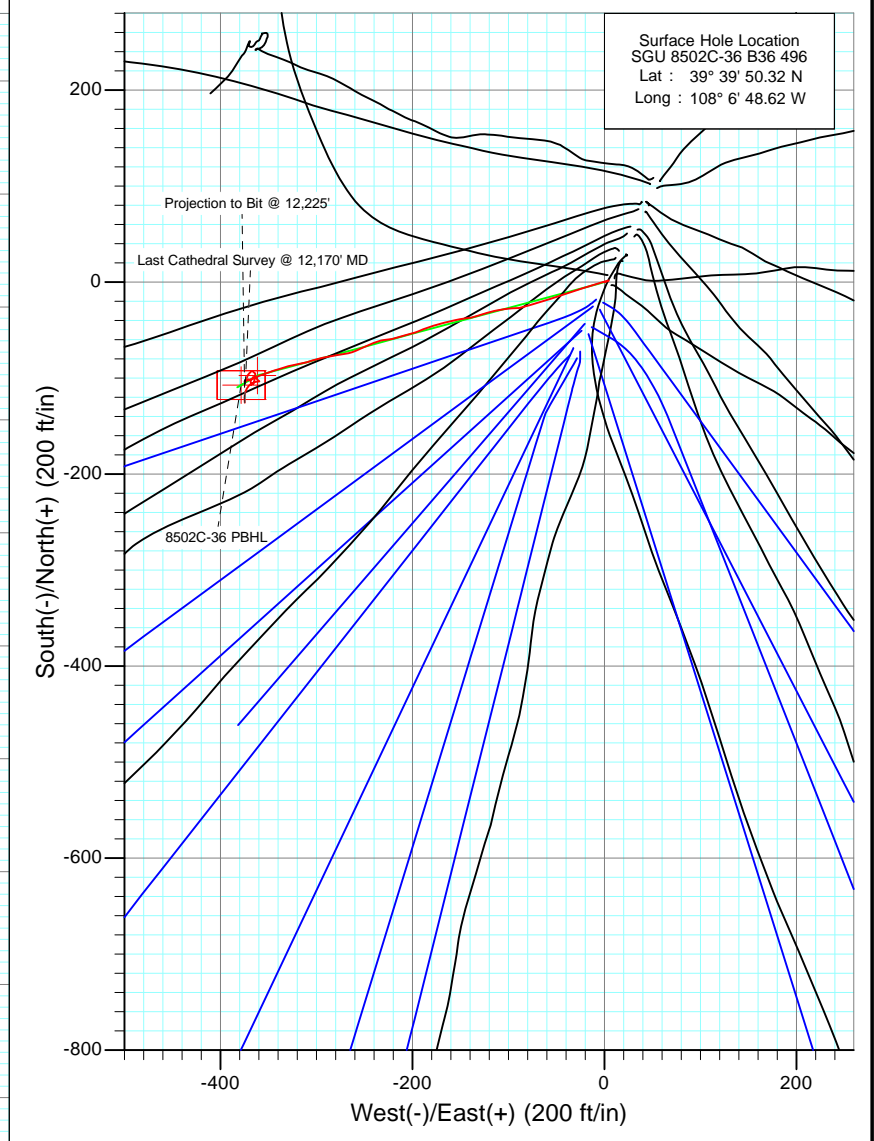
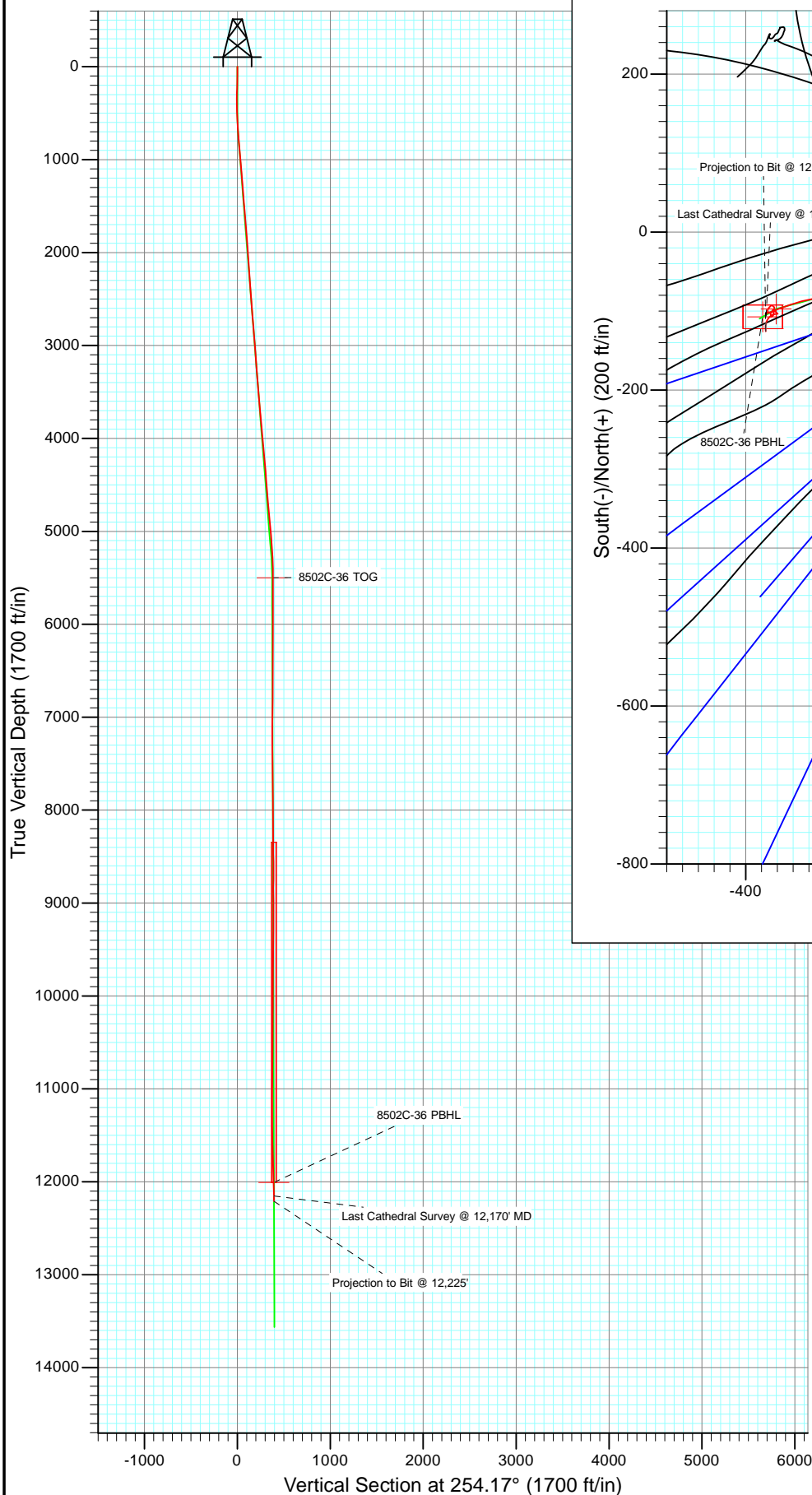




Project: Story Gulch
 Site: S36-T4S-R96W (B36 496)
 Well: SGU 8502C-36 B36 496
 Wellbore: DD
 Design: FINAL



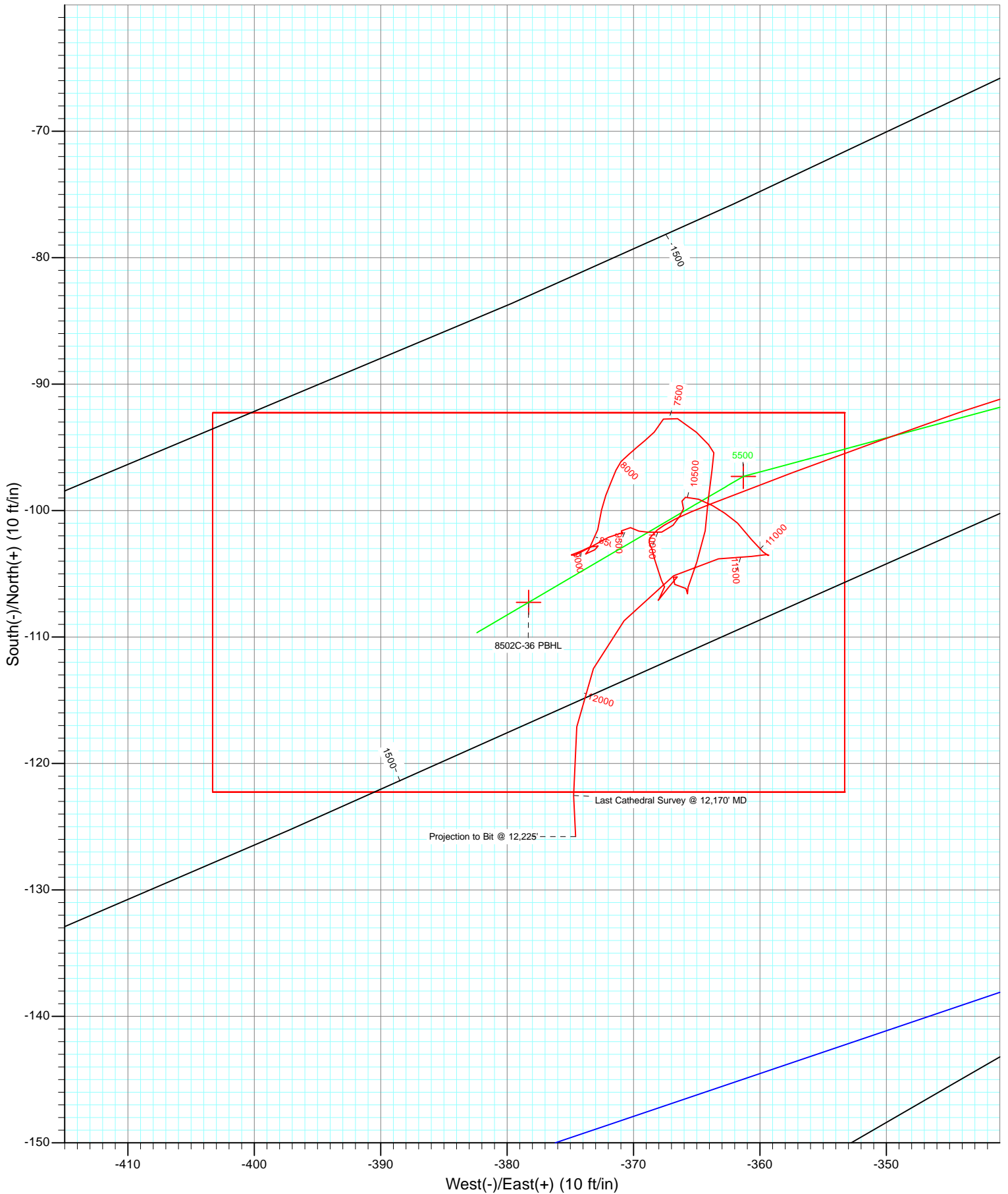
Azimuths to True North
 Magnetic North: 10.47°

Magnetic Field
 Strength: 52341.5nT
 Dip Angle: 65.87°
 Date: 2/10/2011
 Model: IGRF2010

DD					
SGU 8502C-36 B36 496					
105467, 115088; LR					
WELL @ 8374.0ft (Patterson 308)					
North American Datum 1983					
Well SGU 8502C-36 B36 496, True North					
Target	8502C-36 PBHL	Azimuth	Origin Type	N/S	E/W
Target		254.17	Slot	0.0	0.0
Name	TVD	+N/-S	+E/-W	Latitude	Longitude
8502C-36 PBHL12007.0		-107.3	-378.3	39° 39' 49.26 N	108° 6' 53.46 W



Project: Story Gulch
Site: S36-T4S-R96W (B36 496)
Well: SGU 8502C-36 B36 496
Wellbore: DD
Design: FINAL



Survey Report

Company:	EnCana Oil & Gas (USA) Inc	Local Co-ordinate Reference:	Well SGU 8502C-36 B36 496
Project:	Story Gulch	TVD Reference:	WELL @ 8374.0ft (Patterson 308)
Site:	S36-T4S-R96W (B36 496)	MD Reference:	WELL @ 8374.0ft (Patterson 308)
Well:	SGU 8502C-36 B36 496	North Reference:	True
Wellbore:	DD	Survey Calculation Method:	Minimum Curvature
Design:	DD	Database:	EDM 5000.1 US Multi Users DB

Project	Story Gulch		
Map System:	US State Plane 1983	System Datum:	Mean Sea Level
Geo Datum:	North American Datum 1983		
Map Zone:	Colorado Central Zone		

Site		S36-T4S-R96W (B36 496)			
Site Position:		Northing:	1,677,422.27 ft	Latitude:	39° 39' 51.36 N
From:	Lat/Long	Easting:	2,264,394.80 ft	Longitude:	108° 6' 47.88 W
Position Uncertainty:	0.0 ft	Slot Radius:	13.200 in	Grid Convergence:	-1.65 °

Well	SGU 8502C-36 B36 496					
Well Position	+N/-S	0.0 ft	Northing:	1,677,318.76 ft	Latitude:	39° 39' 50.32 N
	+E/-W	0.0 ft	Easting:	2,264,333.54 ft	Longitude:	108° 6' 48.62 W
Position Uncertainty		0.0 ft	Wellhead Elevation:	ft	Ground Level:	8,352.0 ft

Wellbore	DD				
Magnetics	Model Name	Sample Date	Declination (°)	Dip Angle (°)	Field Strength (nT)
	IGRF2010	2/10/2011	10.47	65.87	52,342

Design	DD				
Audit Notes:					
Version:	1.0	Phase:	ACTUAL	Tie On Depth:	0.0
Vertical Section:	Depth From (TVD)	+N/-S	+E/-W	Direction	
	(ft)	(ft)	(ft)	(°)	
	0.0	0.0	0.0	254.17	

Survey Program	Date	2/24/2011			
From (ft)	To (ft)	Survey (Wellbore)	Tool Name	Description	
174.0	2,987.0	Survey #1 (DD)	MWD	Geolink MWD	
3,081.0	12,225.0	Survey #2 (DD)	MWD	Geolink MWD	

Survey										
Measured Depth (ft)	Inclination (°)	Azimuth (°)	Vertical Depth (ft)	+N/-S (ft)	+E/-W (ft)	Vertical Section (ft)	Dogleg Rate (°/100ft)	Build Rate (°/100ft)	Formations / Comments	
0.0	0.00	0.00	0.0	0.0	0.0	0.0	0.00	0.00		
174.0	1.40	75.50	174.0	0.5	2.1	-2.1	0.80	0.80		
238.0	1.50	67.30	238.0	1.1	3.6	-3.7	0.36	0.16		
326.0	0.20	39.30	326.0	1.6	4.7	-5.0	1.51	-1.48		
418.0	1.10	249.40	417.9	1.4	4.0	-4.3	1.39	0.98		
510.0	1.60	259.50	509.9	0.9	1.9	-2.1	0.60	0.54		
606.0	2.50	256.80	605.9	0.2	-1.4	1.3	0.94	0.94		
701.0	3.50	254.10	700.7	-1.1	-6.2	6.3	1.06	1.05		
796.0	5.00	249.50	795.5	-3.4	-12.9	13.3	1.62	1.58		
891.0	5.50	252.10	890.1	-6.2	-21.1	22.0	0.58	0.53		
986.0	5.20	253.50	984.7	-8.8	-29.6	30.9	0.34	-0.32		
1,176.0	4.70	251.10	1,173.9	-13.8	-45.2	47.2	0.28	-0.26		

Survey Report

Company:	EnCana Oil & Gas (USA) Inc	Local Co-ordinate Reference:	Well SGU 8502C-36 B36 496
Project:	Story Gulch	TVD Reference:	WELL @ 8374.0ft (Patterson 308)
Site:	S36-T4S-R96W (B36 496)	MD Reference:	WELL @ 8374.0ft (Patterson 308)
Well:	SGU 8502C-36 B36 496	North Reference:	True
Wellbore:	DD	Survey Calculation Method:	Minimum Curvature
Design:	DD	Database:	EDM 5000.1 US Multi Users DB

Survey									
Measured Depth (ft)	Inclination (°)	Azimuth (°)	Vertical Depth (ft)	+N/-S (ft)	+E/-W (ft)	Vertical Section (ft)	Dogleg Rate (°/100ft)	Build Rate (°/100ft)	Formations / Comments
1,271.0	4.40	249.50	1,268.6	-16.3	-52.3	54.8	0.34	-0.32	
1,366.0	4.80	254.60	1,363.3	-18.7	-59.5	62.4	0.60	0.42	
1,461.0	4.70	255.40	1,458.0	-20.7	-67.1	70.2	0.13	-0.11	
1,556.0	4.40	251.70	1,552.7	-22.8	-74.4	77.8	0.44	-0.32	
1,651.0	4.60	250.70	1,647.4	-25.2	-81.4	85.2	0.23	0.21	
1,746.0	4.50	263.60	1,742.1	-26.9	-88.7	92.7	1.08	-0.11	
1,841.0	4.60	268.80	1,836.8	-27.4	-96.2	100.0	0.45	0.11	
1,936.0	4.80	261.30	1,931.5	-28.1	-104.0	107.7	0.68	0.21	
2,031.0	4.60	258.60	2,026.2	-29.4	-111.6	115.4	0.31	-0.21	
2,126.0	4.20	255.50	2,120.9	-31.1	-118.7	122.7	0.49	-0.42	
2,222.0	3.80	253.20	2,216.7	-32.9	-125.2	129.4	0.45	-0.42	
2,317.0	3.40	249.50	2,311.5	-34.7	-130.8	135.3	0.49	-0.42	
2,412.0	3.40	255.60	2,406.3	-36.4	-136.2	141.0	0.38	0.00	
2,507.0	4.40	262.90	2,501.1	-37.6	-142.5	147.4	1.17	1.05	
2,602.0	5.10	260.40	2,595.8	-38.7	-150.3	155.2	0.77	0.74	
2,698.0	5.00	257.10	2,691.4	-40.4	-158.6	163.6	0.32	-0.10	
2,793.0	4.70	255.30	2,786.1	-42.3	-166.4	171.6	0.35	-0.32	
2,888.0	4.50	253.50	2,880.7	-44.3	-173.7	179.2	0.26	-0.21	
2,987.0	4.30	253.60	2,979.5	-46.5	-181.0	186.8	0.20	-0.20	Last Cathedral Survey @ 2,987' MD
3,081.0	4.00	246.90	3,073.2	-48.8	-187.4	193.6	0.61	-0.32	
3,173.0	3.90	248.70	3,165.0	-51.2	-193.3	199.9	0.17	-0.11	
3,264.0	4.80	254.50	3,255.7	-53.3	-199.8	206.8	1.10	0.99	
3,356.0	4.70	254.90	3,347.4	-55.3	-207.2	214.4	0.11	-0.11	
3,447.0	4.30	252.30	3,438.1	-57.3	-214.0	221.6	0.49	-0.44	
3,539.0	5.10	258.30	3,529.8	-59.2	-221.3	229.1	1.02	0.87	
3,631.0	4.90	264.90	3,621.5	-60.4	-229.2	237.0	0.66	-0.22	
3,722.0	5.20	250.10	3,712.1	-62.1	-237.0	245.0	1.46	0.33	
3,814.0	5.10	246.10	3,803.8	-65.2	-244.7	253.2	0.41	-0.11	
3,906.0	4.70	246.10	3,895.4	-68.4	-251.8	260.9	0.43	-0.43	
3,997.0	4.80	245.30	3,986.1	-71.5	-258.7	268.4	0.13	0.11	
4,089.0	5.70	257.80	4,077.7	-74.1	-266.7	276.8	1.58	0.98	
4,180.0	5.50	262.00	4,168.3	-75.6	-275.4	285.6	0.50	-0.22	
4,272.0	5.20	260.70	4,259.9	-76.9	-283.9	294.1	0.35	-0.33	
4,363.0	5.10	258.20	4,350.5	-78.4	-291.9	302.2	0.27	-0.11	
4,455.0	4.70	254.10	4,442.2	-80.3	-299.5	310.1	0.58	-0.43	
4,546.0	4.30	249.70	4,532.9	-82.5	-306.3	317.2	0.58	-0.44	
4,638.0	5.10	261.60	4,624.6	-84.3	-313.6	324.7	1.37	0.87	
4,729.0	5.10	256.20	4,715.2	-85.8	-321.5	332.8	0.53	0.00	
4,821.0	4.90	255.50	4,806.9	-87.8	-329.3	340.8	0.23	-0.22	
4,912.0	4.80	254.00	4,897.6	-89.8	-336.7	348.5	0.18	-0.11	
5,004.0	4.70	250.30	4,989.2	-92.2	-344.0	356.1	0.35	-0.11	
5,096.0	4.40	250.60	5,081.0	-94.6	-350.9	363.4	0.33	-0.33	
5,187.0	4.40	249.20	5,171.7	-97.0	-357.4	370.3	0.12	0.00	
5,279.0	4.40	248.80	5,263.4	-99.5	-364.0	377.3	0.03	0.00	
5,371.0	1.40	228.30	5,355.3	-101.5	-368.1	381.9	3.40	-3.26	
5,462.0	0.40	138.20	5,446.3	-102.5	-368.8	382.7	1.60	-1.10	
5,554.0	0.40	177.20	5,538.3	-103.1	-368.5	382.7	0.29	0.00	
5,646.0	0.60	158.30	5,630.3	-103.9	-368.3	382.7	0.28	0.22	
5,738.0	0.60	166.50	5,722.3	-104.8	-368.0	382.7	0.09	0.00	
5,830.0	0.40	153.90	5,814.3	-105.5	-367.8	382.6	0.25	-0.22	
5,922.0	0.30	156.20	5,906.3	-106.0	-367.5	382.5	0.11	-0.11	
6,013.0	1.10	215.30	5,997.3	-107.0	-368.0	383.2	1.08	0.88	
6,105.0	0.90	35.00	6,089.3	-107.1	-368.0	383.3	2.17	-0.22	

Survey Report

Company:	EnCana Oil & Gas (USA) Inc	Local Co-ordinate Reference:	Well SGU 8502C-36 B36 496
Project:	Story Gulch	TVD Reference:	WELL @ 8374.0ft (Patterson 308)
Site:	S36-T4S-R96W (B36 496)	MD Reference:	WELL @ 8374.0ft (Patterson 308)
Well:	SGU 8502C-36 B36 496	North Reference:	True
Wellbore:	DD	Survey Calculation Method:	Minimum Curvature
Design:	DD	Database:	EDM 5000.1 US Multi Users DB

Survey									
Measured Depth (ft)	Inclination (°)	Azimuth (°)	Vertical Depth (ft)	+N/-S (ft)	+E/-W (ft)	Vertical Section (ft)	Dogleg Rate (°/100ft)	Build Rate (°/100ft)	Formations / Comments
6,197.0	0.80	43.40	6,181.2	-106.0	-367.2	382.2	0.17	-0.11	
6,288.0	0.50	33.50	6,272.2	-105.2	-366.5	381.3	0.35	-0.33	
6,380.0	0.80	234.50	6,364.2	-105.3	-366.8	381.6	1.39	0.33	
6,472.0	0.80	106.50	6,456.2	-105.8	-366.7	381.7	1.56	0.00	
6,564.0	0.40	117.10	6,548.2	-106.2	-365.8	380.9	0.45	-0.43	
6,655.0	0.40	211.30	6,639.2	-106.6	-365.7	380.9	0.64	0.00	
6,747.0	1.00	15.00	6,731.2	-106.1	-365.7	380.8	1.51	0.65	
6,838.0	1.70	21.70	6,822.2	-104.1	-365.0	379.5	0.79	0.77	
6,930.0	1.50	7.40	6,914.2	-101.6	-364.3	378.2	0.48	-0.22	
7,021.0	1.50	3.30	7,005.1	-99.2	-364.1	377.4	0.12	0.00	
7,113.0	1.50	11.40	7,097.1	-96.8	-363.8	376.4	0.23	0.00	
7,205.0	0.30	339.00	7,189.1	-95.4	-363.6	375.9	1.37	-1.30	
7,295.0	0.70	323.00	7,279.1	-94.8	-364.1	376.1	0.47	0.44	
7,387.0	1.00	310.30	7,371.1	-93.8	-365.0	376.8	0.38	0.33	
7,479.0	1.30	302.30	7,463.0	-92.7	-366.5	377.9	0.37	0.33	
7,570.0	0.80	204.40	7,554.0	-92.8	-367.6	379.0	1.78	-0.55	
7,662.0	0.80	225.20	7,646.0	-93.8	-368.4	380.0	0.31	0.00	
7,754.0	0.50	232.90	7,738.0	-94.5	-369.1	380.9	0.34	-0.33	
7,845.0	0.40	226.80	7,829.0	-95.0	-369.7	381.6	0.12	-0.11	
7,937.0	0.70	229.90	7,921.0	-95.5	-370.3	382.4	0.33	0.33	
8,028.0	0.40	223.30	8,012.0	-96.1	-371.0	383.1	0.34	-0.33	
8,120.0	0.60	201.00	8,104.0	-96.8	-371.4	383.7	0.30	0.22	
8,211.0	0.70	203.80	8,195.0	-97.8	-371.8	384.3	0.12	0.11	
8,303.0	0.70	199.60	8,287.0	-98.8	-372.2	385.0	0.06	0.00	
8,395.0	0.80	193.50	8,379.0	-100.0	-372.5	385.7	0.14	0.11	
8,486.0	1.20	188.80	8,470.0	-101.5	-372.8	386.4	0.45	0.44	
8,577.0	1.10	221.00	8,561.0	-103.1	-373.5	387.5	0.71	-0.11	
8,669.0	0.60	44.50	8,653.0	-103.4	-373.8	387.8	1.85	-0.54	
8,760.0	0.50	88.60	8,743.9	-103.1	-373.1	387.0	0.47	-0.11	
8,852.0	0.40	334.40	8,835.9	-102.8	-372.8	386.7	0.82	-0.11	
8,944.0	0.80	233.50	8,927.9	-102.9	-373.4	387.3	1.04	0.43	
9,035.0	0.40	270.40	9,018.9	-103.3	-374.3	388.2	0.59	-0.44	
9,127.0	0.50	232.10	9,110.9	-103.5	-374.9	388.9	0.34	0.11	
9,218.0	0.80	70.40	9,201.9	-103.5	-374.6	388.7	1.41	0.33	
9,310.0	1.00	55.70	9,293.9	-102.9	-373.4	387.3	0.33	0.22	
9,402.0	1.00	67.70	9,385.9	-102.1	-372.0	385.7	0.23	0.00	
9,493.0	0.50	80.10	9,476.9	-101.7	-370.8	384.5	0.57	-0.55	
9,584.0	0.60	248.20	9,567.9	-101.8	-370.9	384.6	1.20	0.11	
9,676.0	0.70	40.90	9,659.9	-101.6	-371.0	384.6	1.37	0.11	
9,767.0	0.50	114.20	9,750.9	-101.3	-370.2	383.8	0.81	-0.22	
9,859.0	0.40	111.70	9,842.9	-101.6	-369.6	383.3	0.11	-0.11	
9,951.0	0.60	86.10	9,934.9	-101.7	-368.8	382.5	0.32	0.22	
10,042.0	0.70	91.30	10,025.9	-101.7	-367.8	381.6	0.13	0.11	
10,134.0	0.80	31.10	10,117.9	-101.2	-366.9	380.5	0.82	0.11	
10,225.0	0.40	46.60	10,208.9	-100.4	-366.3	379.8	0.47	-0.44	
10,317.0	0.40	4.40	10,300.9	-99.9	-366.0	379.4	0.31	0.00	
10,409.0	0.40	336.20	10,392.9	-99.2	-366.2	379.3	0.21	0.00	
10,500.0	0.50	89.90	10,483.9	-98.9	-365.9	379.0	0.83	0.11	
10,592.0	0.80	102.90	10,575.9	-99.1	-364.9	378.0	0.36	0.33	
10,683.0	0.80	126.40	10,666.8	-99.6	-363.7	377.1	0.36	0.00	
10,775.0	0.60	116.50	10,758.8	-100.2	-362.8	376.4	0.25	-0.22	
10,867.0	1.00	134.50	10,850.8	-101.0	-361.8	375.6	0.51	0.43	
10,958.0	1.20	144.00	10,941.8	-102.3	-360.6	374.9	0.30	0.22	

Survey Report

Company:	EnCana Oil & Gas (USA) Inc	Local Co-ordinate Reference:	Well SGU 8502C-36 B36 496
Project:	Story Gulch	TVD Reference:	WELL @ 8374.0ft (Patterson 308)
Site:	S36-T4S-R96W (B36 496)	MD Reference:	WELL @ 8374.0ft (Patterson 308)
Well:	SGU 8502C-36 B36 496	North Reference:	True
Wellbore:	DD	Survey Calculation Method:	Minimum Curvature
Design:	DD	Database:	EDM 5000.1 US Multi Users DB

Survey									
Measured Depth (ft)	Inclination (°)	Azimuth (°)	Vertical Depth (ft)	+N/-S (ft)	+E/-W (ft)	Vertical Section (ft)	Dogleg Rate (°/100ft)	Build Rate (°/100ft)	Formations / Comments
11,050.0	0.50	119.60	11,033.8	-103.3	-359.7	374.3	0.84	-0.76	
11,141.0	0.10	136.00	11,124.8	-103.5	-359.3	373.9	0.45	-0.44	
11,233.0	0.10	344.50	11,216.8	-103.5	-359.3	373.9	0.21	0.00	
11,325.0	0.20	256.00	11,308.8	-103.5	-359.5	374.1	0.24	0.11	
11,599.0	1.40	266.30	11,582.8	-103.8	-363.3	377.8	0.44	0.44	
11,874.0	2.60	221.30	11,857.6	-108.7	-370.7	386.3	0.69	0.44	
12,170.0	3.40	177.10	12,153.2	-122.5	-374.7	393.9	0.80	0.27	Last Cathedral Survey @ 12,170' MD
12,225.0	3.40	177.10	12,208.1	-125.8	-374.6	394.7	0.00	0.00	Projection to Bit @ 12,225'

Targets									
Target Name	Dip Angle (°)	Dip Dir. (°)	TVD (ft)	+N/-S (ft)	+E/-W (ft)	Northing (ft)	Easting (ft)	Latitude	Longitude
8502C-36 PBHL	0.00	0.00	12,007.0	-107.3	-378.3	1,677,222.42	2,263,952.31	39° 39' 49.26 N	108° 6' 53.46 W
- hit/miss target									
- Shape									
- actual wellpath misses target center by 8.7ft at 12023.3ft MD (12006.7 TVD, -114.8 N, -374.0 E)									
- Rectangle (sides W30.0 H50.0 D0.0)									
8502C-36 TOG	0.00	0.00	5,500.0	-97.3	-361.3	1,677,231.89	2,263,969.59	39° 39' 49.36 N	108° 6' 53.24 W
- actual wellpath misses target center by 9.1ft at 5515.7ft MD (5500.0 TVD, -102.8 N, -368.6 E)									
- Point									

Design Annotations					
Measured Depth (ft)	Vertical Depth (ft)	Local Coordinates			
		+N/-S (ft)	+E/-W (ft)	Comment	
2,987.0	2,979.5	-46.5	-181.0	Last Cathedral Survey @ 2,987' MD	
12,170.0	12,153.2	-122.5	-374.7	Last Cathedral Survey @ 12,170' MD	
12,225.0	12,208.1	-125.8	-374.6	Projection to Bit @ 12,225'	

Checked By: _____	Approved By: _____	Date: _____
-------------------	--------------------	-------------