



# **EOG Resources, Inc - RM**

**Weld County, CO  
Sec 8, T11N,R63W, 6th PM  
Critter Creek #12-08H**

**Wellbore #1**

**Survey: Critter Creek #12-08H**

## **DDC Survey Report**

**03 May, 2011**

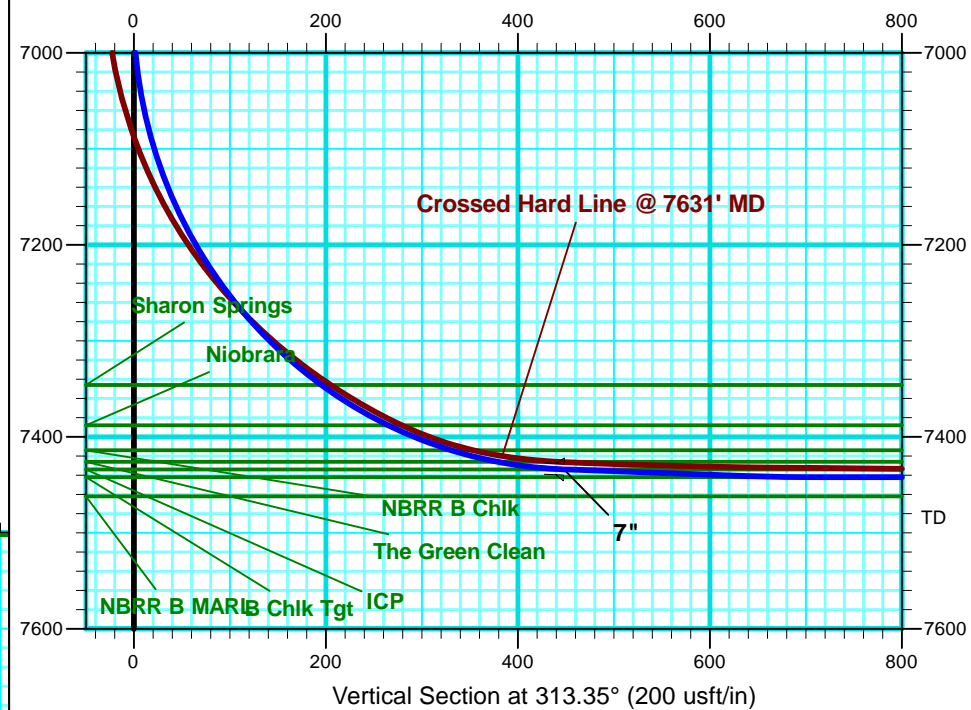
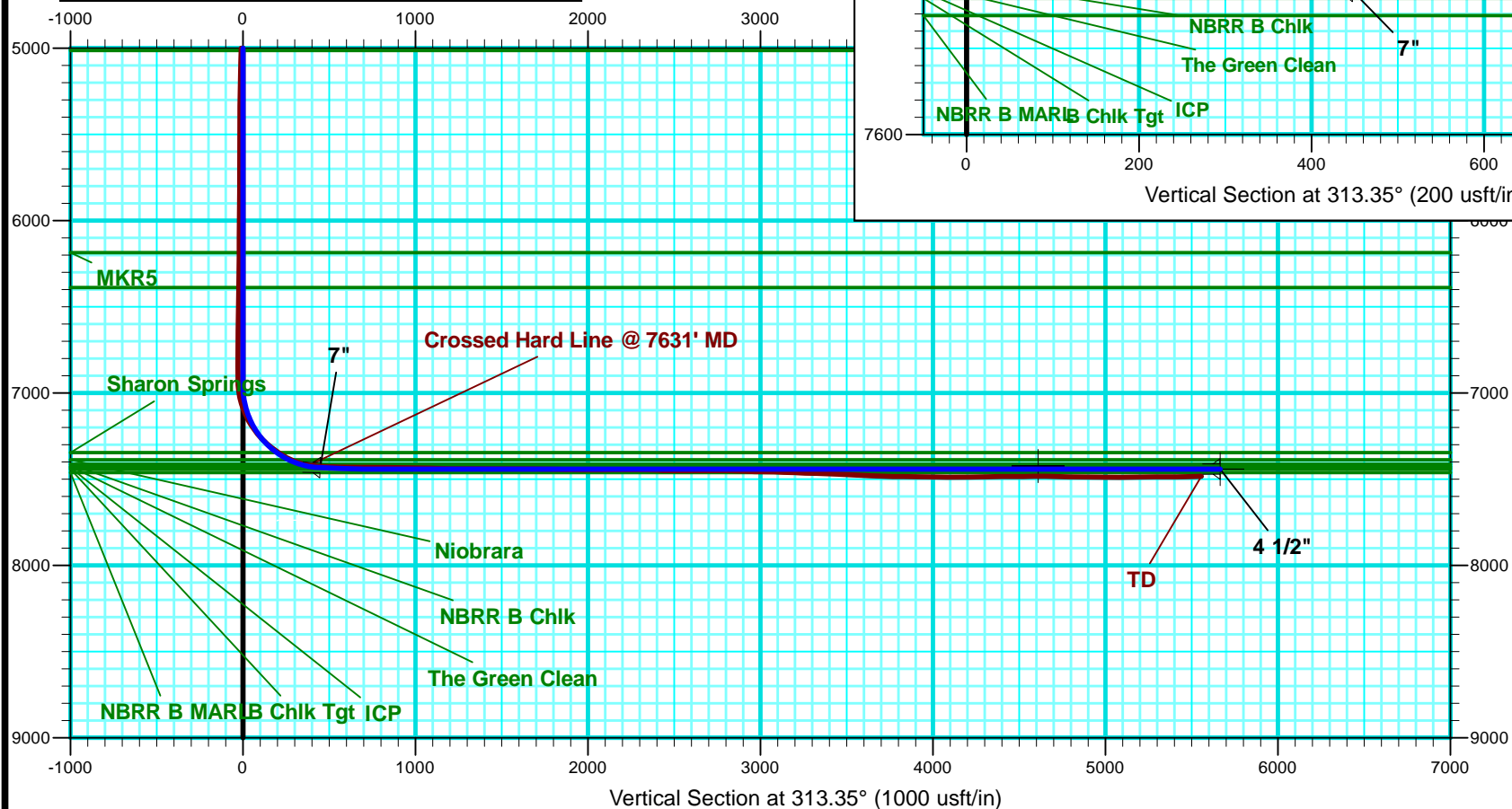




Weld County, CO

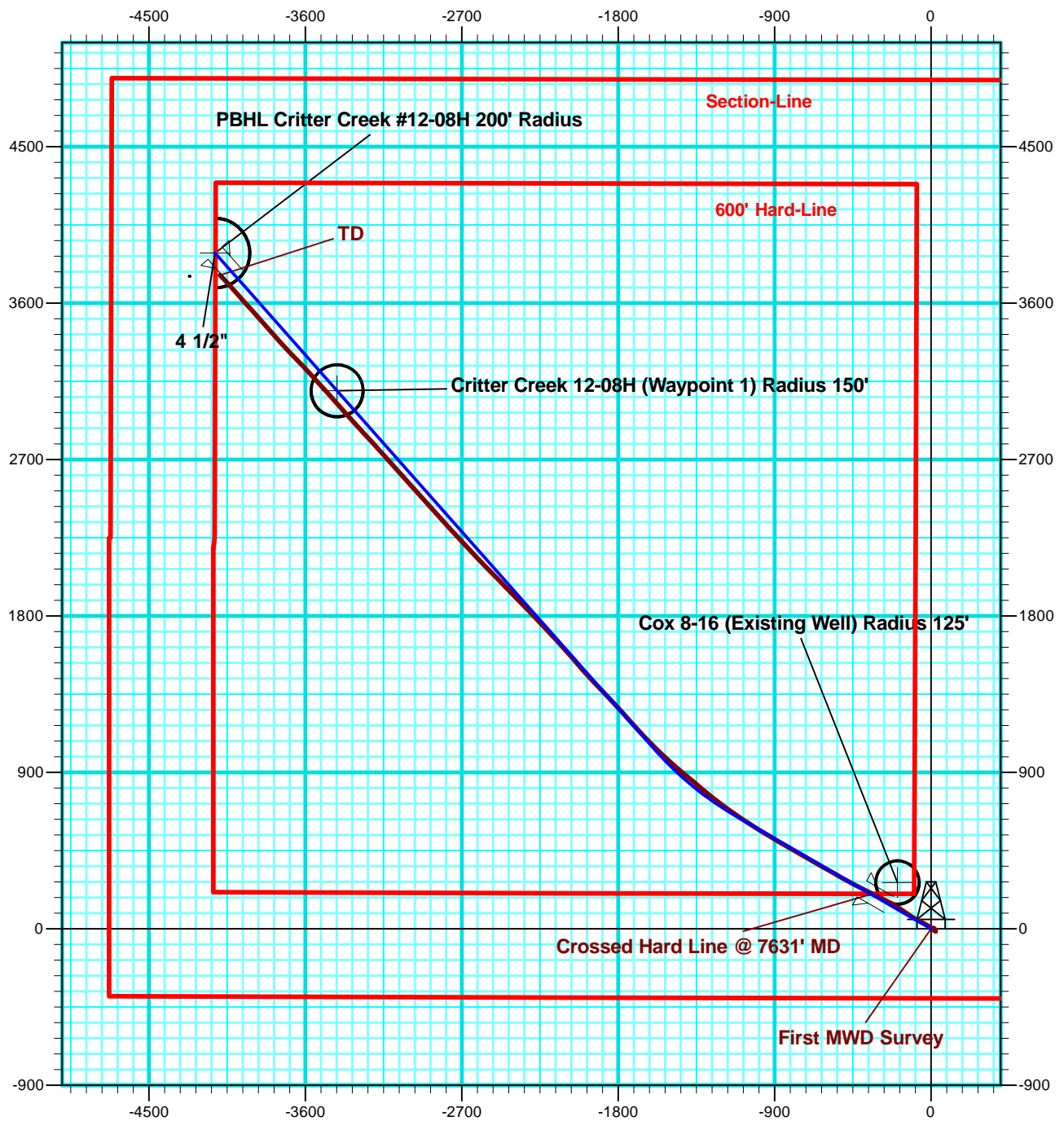
Critter Creek #12-08H

RM-11220





Weld County, CO  
Crittter Creek #12-08H  
RM-11220



<b>Company:</b>	EOG Resources, Inc - RM	<b>Local Co-ordinate Reference:</b>	Well Critter Creek #12-08H
<b>Project:</b>	Weld County, CO	<b>TVD Reference:</b>	WELL @ 5319.0usft (SST #53)
<b>Site:</b>	Sec 8, T11N,R63W, 6th PM	<b>MD Reference:</b>	WELL @ 5319.0usft (SST #53)
<b>Well:</b>	Critter Creek #12-08H	<b>North Reference:</b>	True
<b>Wellbore:</b>	Wellbore #1	<b>Survey Calculation Method:</b>	Minimum Curvature
<b>Design:</b>	Wellbore #1	<b>Database:</b>	EDM 5000.1 Single User Db

Project	Weld County, CO		
Map System:	US State Plane 1927 (Exact solution)	System Datum:	Mean Sea Level
Geo Datum:	NAD 1927 (NADCON CONUS)		
Map Zone:	Colorado North 501		

Site		Sec 8, T11N,R63W, 6th PM			
Site Position:		Northing:	583,610.42 usft	Latitude:	40° 55' 50.440 N
From:	Lat/Long	Easting:	2,290,492.97 usft	Longitude:	104° 26' 55.500 W
Position Uncertainty:	0.0 usft	Slot Radius:	13-3/16 "	Grid Convergence:	0.68 °

Well		Critter Creek #12-08H				
Well Position	+N-S	0.0 usft	Northing:	583,610.41 usft	Latitude:	40° 55' 50.440 N
	+E-W	0.0 usft	Easting:	2,290,492.97 usft	Longitude:	104° 26' 55.500 W
Position Uncertainty		0.0 usft	Wellhead Elevation:	usft	Ground Level:	5,297.0 usft

Wellbore	Wellbore #1				
Magnetics	Model Name	Sample Date	Declination (°)	Dip Angle (°)	Field Strength (nT)
	IGRF2010	4/15/2011	8.76	67.54	53,455

Design	Wellbore #1				
Audit Notes:					
Version:	1.0	Phase:	ACTUAL	Tie On Depth:	0.0
Vertical Section:	Depth From (TVD) (usft)	+N-S (usft)	+E-W (usft)	Direction (°)	
	0.0	0.0	0.0	313.35	

Survey Program		Date	5/3/2011		
From (usft)	To (usft)	Survey (Wellbore)	Tool Name	Description	
1,514.0	12,841.0	Critter Creek #12-08H (Wellbore #1)	MWD default	MWD - Standard	

Survey									
Measured Depth (usft)	Inclination (°)	Azimuth (°)	Vertical Depth (usft)	+N/-S (usft)	+E/-W (usft)	Vertical Section (usft)	Dogleg Rate (°/100usft)	Build Rate (°/100usft)	Turn Rate (°/100usft)
First MWD Survey									
1,514.0	0.00	0.00	1,514.0	0.0	0.0	0.0	0.00	0.00	0.00
1,543.0	0.40	152.40	1,543.0	-0.1	0.0	-0.1	1.38	1.38	0.00
1,791.0	0.30	110.40	1,791.0	-1.1	1.1	-1.5	0.11	-0.04	-16.94
2,041.0	0.60	86.10	2,041.0	-1.2	3.0	-3.0	0.14	0.12	-9.72
2,293.0	0.60	58.90	2,293.0	-0.5	5.4	-4.3	0.11	0.00	-10.79
2,547.0	0.80	63.60	2,547.0	1.0	8.1	-5.2	0.08	0.08	1.85
2,800.0	0.40	129.50	2,799.9	1.2	10.4	-6.7	0.29	-0.16	26.05
3,055.0	0.40	102.40	3,054.9	0.5	12.0	-8.4	0.07	0.00	-10.63
3,308.0	0.30	95.90	3,307.9	0.2	13.5	-9.7	0.04	-0.04	-2.57

<b>Company:</b>	EOG Resources, Inc - RM	<b>Local Co-ordinate Reference:</b>	Well Critter Creek #12-08H
<b>Project:</b>	Weld County, CO	<b>TVD Reference:</b>	WELL @ 5319.0usft (SST #53)
<b>Site:</b>	Sec 8, T11N,R63W, 6th PM	<b>MD Reference:</b>	WELL @ 5319.0usft (SST #53)
<b>Well:</b>	Critter Creek #12-08H	<b>North Reference:</b>	True
<b>Wellbore:</b>	Wellbore #1	<b>Survey Calculation Method:</b>	Minimum Curvature
<b>Design:</b>	Wellbore #1	<b>Database:</b>	EDM 5000.1 Single User Db

**Survey**

Measured Depth (usft)	Inclination (°)	Azimuth (°)	Vertical Depth (usft)	+N/-S (usft)	+E/-W (usft)	Vertical Section (usft)	Dogleg Rate (°/100usft)	Build Rate (°/100usft)	Turn Rate (°/100usft)
3,562.0	0.20	75.20	3,561.9	0.3	14.6	-10.4	0.05	-0.04	-8.15
3,815.0	0.40	323.80	3,814.9	1.1	14.5	-9.8	0.20	0.08	-44.03
4,069.0	0.30	351.90	4,068.9	2.5	13.9	-8.4	0.08	-0.04	11.06
4,322.0	0.30	19.10	4,321.9	3.8	14.0	-7.6	0.06	0.00	10.75
4,575.0	0.30	11.10	4,574.9	5.0	14.3	-7.0	0.02	0.00	-3.16
4,829.0	0.60	124.90	4,828.9	4.9	15.6	-7.9	0.30	0.12	44.80
5,084.0	1.10	138.80	5,083.9	2.3	18.3	-11.7	0.21	0.20	5.45
5,337.0	0.90	149.60	5,336.8	-1.2	20.9	-16.0	0.11	-0.08	4.27
5,590.0	0.40	218.80	5,589.8	-3.6	21.3	-18.0	0.33	-0.20	27.35
5,845.0	0.80	197.20	5,844.8	-6.0	20.2	-18.8	0.18	0.16	-8.47
6,099.0	0.60	101.20	6,098.8	-8.0	21.0	-20.8	0.41	-0.08	-37.80
6,288.0	0.60	155.40	6,287.8	-9.1	22.4	-22.5	0.29	0.00	28.68
6,384.0	0.70	155.90	6,383.8	-10.1	22.8	-23.5	0.10	0.10	0.52
6,479.0	0.70	144.80	6,478.8	-11.1	23.4	-24.6	0.14	0.00	-11.68
6,574.0	0.70	138.50	6,573.8	-12.0	24.1	-25.8	0.08	0.00	-6.63
6,830.0	0.60	135.00	6,829.8	-14.1	26.1	-28.7	0.04	-0.04	-1.37
6,862.0	0.60	137.40	6,861.8	-14.3	26.4	-29.0	0.08	0.00	7.50
6,891.0	0.60	138.00	6,890.8	-14.6	26.6	-29.3	0.02	0.00	2.07
6,923.0	0.90	279.60	6,922.8	-14.6	26.4	-29.3	4.44	0.94	442.50
6,955.0	4.00	303.70	6,954.7	-14.0	25.2	-27.9	10.00	9.69	75.31
6,986.0	7.60	308.60	6,985.6	-12.1	22.7	-24.8	11.71	11.61	15.81
7,019.0	11.70	310.90	7,018.1	-8.5	18.5	-19.3	12.48	12.42	6.97
7,050.0	15.10	310.60	7,048.2	-3.9	13.1	-12.1	10.97	10.97	-0.97
7,083.0	18.70	307.90	7,079.8	2.2	5.6	-2.6	11.16	10.91	-8.18
7,115.0	22.60	304.60	7,109.7	8.8	-3.5	8.6	12.71	12.19	-10.31
7,146.0	26.20	301.60	7,138.0	15.8	-14.2	21.2	12.28	11.61	-9.68
7,178.0	30.10	298.80	7,166.2	23.4	-27.3	35.9	12.86	12.19	-8.75
7,210.0	34.30	297.70	7,193.3	31.4	-42.3	52.3	13.25	13.13	-3.44
7,241.0	37.40	296.90	7,218.4	39.8	-58.4	69.8	10.11	10.00	-2.58
7,273.0	41.10	298.60	7,243.2	49.2	-76.3	89.3	12.04	11.56	5.31
7,305.0	44.40	300.90	7,266.7	60.0	-95.2	110.4	11.41	10.31	7.19
7,337.0	47.40	302.70	7,288.9	72.1	-114.7	132.9	10.21	9.38	5.63
7,369.0	50.50	303.40	7,309.9	85.3	-134.9	156.7	9.83	9.69	2.19
7,400.0	53.70	304.30	7,329.0	98.9	-155.2	180.8	10.57	10.32	2.90
7,432.0	57.10	304.40	7,347.1	113.8	-177.0	206.8	10.63	10.63	0.31
7,464.0	59.70	302.70	7,363.9	128.8	-199.7	233.6	9.30	8.13	-5.31
7,495.0	63.10	300.20	7,378.7	143.0	-222.9	260.3	13.05	10.97	-8.06
7,528.0	67.20	297.60	7,392.6	157.5	-249.1	289.3	14.33	12.42	-7.88
7,559.0	71.60	296.50	7,403.5	170.6	-275.0	317.1	14.58	14.19	-3.55
7,591.0	76.30	296.00	7,412.4	184.2	-302.5	346.5	14.76	14.69	-1.56
7,622.0	80.20	295.80	7,418.7	197.5	-329.8	375.4	12.60	12.58	-0.65
<b>Crossed Hard Line @ 7631' MD</b>									
7,631.0	81.26	295.80	7,420.1	201.4	-337.8	383.9	11.82	11.82	0.00
7,655.0	84.10	295.80	7,423.2	211.7	-359.3	406.6	11.82	11.82	0.00

<b>Company:</b>	EOG Resources, Inc - RM	<b>Local Co-ordinate Reference:</b>	Well Critter Creek #12-08H
<b>Project:</b>	Weld County, CO	<b>TVD Reference:</b>	WELL @ 5319.0usft (SST #53)
<b>Site:</b>	Sec 8, T11N,R63W, 6th PM	<b>MD Reference:</b>	WELL @ 5319.0usft (SST #53)
<b>Well:</b>	Critter Creek #12-08H	<b>North Reference:</b>	True
<b>Wellbore:</b>	Wellbore #1	<b>Survey Calculation Method:</b>	Minimum Curvature
<b>Design:</b>	Wellbore #1	<b>Database:</b>	EDM 5000.1 Single User Db

Survey									
Measured Depth (usft)	Inclination (°)	Azimuth (°)	Vertical Depth (usft)	+N/-S (usft)	+E/-W (usft)	Vertical Section (usft)	Dogleg Rate (°/100usft)	Build Rate (°/100usft)	Turn Rate (°/100usft)
7,719.0	88.20	297.90	7,427.5	240.6	-416.2	467.8	7.19	6.41	3.28
7,749.0	88.40	299.00	7,428.4	254.8	-442.6	496.8	3.73	0.67	3.67
7,780.0	88.30	299.10	7,429.3	269.9	-469.7	526.8	0.46	-0.32	0.32
7,810.0	88.50	299.50	7,430.1	284.6	-495.8	555.9	1.49	0.67	1.33
7,841.0	88.80	299.00	7,430.8	299.7	-522.9	586.0	1.88	0.97	-1.61
7,872.0	89.00	299.30	7,431.4	314.8	-549.9	616.0	1.16	0.65	0.97
7,902.0	89.30	299.30	7,431.9	329.5	-576.1	645.1	1.00	1.00	0.00
7,935.0	89.50	298.80	7,432.2	345.5	-604.9	677.1	1.63	0.61	-1.52
7,966.0	89.30	299.50	7,432.5	360.6	-632.0	707.1	2.35	-0.65	2.26
8,029.0	89.80	299.30	7,433.0	391.5	-686.9	768.3	0.85	0.79	-0.32
8,093.0	89.00	300.00	7,433.7	423.2	-742.5	830.4	1.66	-1.25	1.09
8,156.0	89.70	300.20	7,434.4	454.8	-797.0	891.8	1.16	1.11	0.32
8,220.0	89.40	301.30	7,434.9	487.5	-852.0	954.2	1.78	-0.47	1.72
8,284.0	88.80	300.90	7,435.9	520.6	-906.8	1,016.8	1.13	-0.94	-0.63
8,347.0	87.90	300.20	7,437.7	552.6	-961.0	1,078.2	1.81	-1.43	-1.11
8,411.0	89.20	301.60	7,439.4	585.4	-1,015.9	1,140.6	2.98	2.03	2.19
8,474.0	89.60	303.40	7,440.0	619.3	-1,069.1	1,202.5	2.93	0.63	2.86
8,537.0	90.00	305.00	7,440.2	654.7	-1,121.2	1,264.7	2.62	0.63	2.54
8,600.0	89.80	305.80	7,440.4	691.2	-1,172.5	1,327.1	1.31	-0.32	1.27
8,664.0	89.80	307.40	7,440.6	729.3	-1,223.9	1,390.7	2.50	0.00	2.50
8,728.0	89.80	308.80	7,440.8	768.8	-1,274.3	1,454.4	2.19	0.00	2.19
8,792.0	89.60	310.00	7,441.1	809.4	-1,323.7	1,518.2	1.90	-0.31	1.88
8,855.0	90.30	309.70	7,441.2	849.8	-1,372.1	1,581.1	1.21	1.11	-0.48
8,919.0	89.40	309.90	7,441.4	890.8	-1,421.3	1,645.0	1.44	-1.41	0.31
8,984.0	89.60	311.50	7,441.9	933.2	-1,470.5	1,709.9	2.48	0.31	2.46
9,047.0	89.00	312.90	7,442.7	975.5	-1,517.2	1,772.9	2.42	-0.95	2.22
9,111.0	88.60	313.20	7,444.0	1,019.2	-1,564.0	1,836.9	0.78	-0.63	0.47
9,174.0	88.70	315.30	7,445.5	1,063.1	-1,609.1	1,899.9	3.34	0.16	3.33
9,238.0	89.30	316.70	7,446.6	1,109.1	-1,653.5	1,963.8	2.38	0.94	2.19
9,302.0	90.10	318.00	7,447.0	1,156.2	-1,696.9	2,027.6	2.39	1.25	2.03
9,365.0	90.60	318.30	7,446.6	1,203.1	-1,738.9	2,090.4	0.93	0.79	0.48
9,428.0	90.70	317.60	7,445.9	1,249.9	-1,781.1	2,153.2	1.12	0.16	-1.11
9,492.0	90.30	316.90	7,445.3	1,296.9	-1,824.5	2,217.0	1.26	-0.63	-1.09
9,523.0	90.50	316.90	7,445.1	1,319.5	-1,845.7	2,248.0	0.65	0.65	0.00
9,555.0	89.50	316.70	7,445.1	1,342.9	-1,867.6	2,279.9	3.19	-3.13	-0.63
9,586.0	88.20	316.20	7,445.7	1,365.3	-1,889.0	2,310.9	4.49	-4.19	-1.61
9,618.0	88.40	316.20	7,446.7	1,388.4	-1,911.1	2,342.8	0.63	0.63	0.00
9,650.0	87.80	316.70	7,447.7	1,411.6	-1,933.2	2,374.7	2.44	-1.88	1.56
9,681.0	87.90	316.70	7,448.9	1,434.1	-1,954.4	2,405.7	0.32	0.32	0.00
9,714.0	88.20	317.80	7,450.0	1,458.3	-1,976.8	2,438.6	3.45	0.91	3.33
9,746.0	88.60	318.70	7,450.9	1,482.2	-1,998.1	2,470.4	3.08	1.25	2.81
9,778.0	89.40	318.50	7,451.5	1,506.2	-2,019.2	2,502.3	2.58	2.50	-0.63
9,809.0	90.00	319.20	7,451.6	1,529.6	-2,039.6	2,533.2	2.97	1.94	2.26

<b>Company:</b>	EOG Resources, Inc - RM	<b>Local Co-ordinate Reference:</b>	Well Critter Creek #12-08H
<b>Project:</b>	Weld County, CO	<b>TVD Reference:</b>	WELL @ 5319.0usft (SST #53)
<b>Site:</b>	Sec 8, T11N,R63W, 6th PM	<b>MD Reference:</b>	WELL @ 5319.0usft (SST #53)
<b>Well:</b>	Critter Creek #12-08H	<b>North Reference:</b>	True
<b>Wellbore:</b>	Wellbore #1	<b>Survey Calculation Method:</b>	Minimum Curvature
<b>Design:</b>	Wellbore #1	<b>Database:</b>	EDM 5000.1 Single User Db

### Survey

Measured Depth (usft)	Inclination (°)	Azimuth (°)	Vertical Depth (usft)	+N/-S (usft)	+E/-W (usft)	Vertical Section (usft)	Dogleg Rate (°/100usft)	Build Rate (°/100usft)	Turn Rate (°/100usft)
9,841.0	90.30	318.80	7,451.5	1,553.7	-2,060.6	2,565.0	1.56	0.94	-1.25
9,873.0	90.80	319.40	7,451.2	1,577.9	-2,081.6	2,596.8	2.44	1.56	1.88
9,902.0	90.20	318.30	7,451.0	1,599.7	-2,100.7	2,625.7	4.32	-2.07	-3.79
9,934.0	89.70	318.00	7,451.0	1,623.6	-2,122.0	2,657.6	1.82	-1.56	-0.94
9,966.0	89.80	317.40	7,451.2	1,647.2	-2,143.6	2,689.5	1.90	0.31	-1.88
9,998.0	90.20	317.60	7,451.2	1,670.8	-2,165.2	2,721.4	1.40	1.25	0.63
10,029.0	90.60	318.00	7,450.9	1,693.8	-2,186.0	2,752.3	1.82	1.29	1.29
10,062.0	89.90	317.30	7,450.8	1,718.2	-2,208.2	2,785.2	3.00	-2.12	-2.12
10,093.0	88.60	316.40	7,451.2	1,740.8	-2,229.4	2,816.2	5.10	-4.19	-2.90
10,126.0	87.50	315.90	7,452.3	1,764.6	-2,252.3	2,849.1	3.66	-3.33	-1.52
10,157.0	87.60	316.20	7,453.6	1,786.9	-2,273.8	2,880.0	1.02	0.32	0.97
10,189.0	87.90	316.00	7,454.9	1,809.9	-2,295.9	2,912.0	1.13	0.94	-0.63
10,221.0	88.20	315.50	7,456.0	1,832.8	-2,318.3	2,943.9	1.82	0.94	-1.56
10,252.0	88.40	315.50	7,456.9	1,854.9	-2,340.0	2,974.9	0.65	0.65	0.00
10,284.0	88.70	315.30	7,457.7	1,877.7	-2,362.4	3,006.9	1.13	0.94	-0.63
10,315.0	89.30	316.40	7,458.3	1,899.9	-2,384.0	3,037.8	4.04	1.94	3.55
10,347.0	89.80	316.20	7,458.5	1,923.1	-2,406.1	3,069.8	1.68	1.56	-0.63
10,379.0	88.40	315.70	7,459.0	1,946.1	-2,428.4	3,101.8	4.65	-4.38	-1.56
10,411.0	87.30	315.90	7,460.2	1,969.0	-2,450.7	3,133.7	3.49	-3.44	0.63
10,475.0	87.80	315.70	7,463.0	2,014.8	-2,495.2	3,197.6	0.84	0.78	-0.31
10,538.0	88.20	315.10	7,465.1	2,059.7	-2,539.5	3,260.5	1.14	0.63	-0.95
10,602.0	87.80	316.20	7,467.4	2,105.4	-2,584.2	3,324.4	1.83	-0.63	1.72
10,665.0	88.20	316.00	7,469.6	2,150.8	-2,627.8	3,387.3	0.71	0.63	-0.32
10,730.0	87.90	317.10	7,471.8	2,197.9	-2,672.5	3,452.2	1.75	-0.46	1.69
10,795.0	86.90	318.10	7,474.7	2,245.9	-2,716.3	3,516.9	2.17	-1.54	1.54
10,858.0	87.10	317.80	7,478.0	2,292.6	-2,758.4	3,579.6	0.57	0.32	-0.48
10,920.0	87.30	317.30	7,481.1	2,338.3	-2,800.2	3,641.4	0.87	0.32	-0.81
10,984.0	88.20	317.60	7,483.6	2,385.4	-2,843.5	3,705.2	1.48	1.41	0.47
11,046.0	89.10	318.70	7,485.0	2,431.6	-2,884.8	3,766.9	2.29	1.45	1.77
11,109.0	89.20	317.40	7,486.0	2,478.4	-2,926.9	3,829.7	2.07	0.16	-2.06
11,173.0	89.70	317.30	7,486.6	2,525.5	-2,970.3	3,893.6	0.80	0.78	-0.16
11,237.0	88.80	318.70	7,487.4	2,573.0	-3,013.1	3,957.3	2.60	-1.41	2.19
11,301.0	89.20	318.10	7,488.5	2,620.9	-3,055.6	4,021.1	1.13	0.63	-0.94
11,365.0	89.70	318.50	7,489.2	2,668.7	-3,098.2	4,084.8	1.00	0.78	0.63
11,428.0	90.30	318.00	7,489.2	2,715.7	-3,140.1	4,147.6	1.24	0.95	-0.79
11,491.0	91.00	318.00	7,488.4	2,762.5	-3,182.3	4,210.4	1.11	1.11	0.00
11,522.0	90.10	317.40	7,488.1	2,785.4	-3,203.1	4,241.3	3.49	-2.90	-1.94
11,553.0	90.10	317.30	7,488.1	2,808.2	-3,224.1	4,272.2	0.32	0.00	-0.32
11,617.0	91.30	317.30	7,487.3	2,855.2	-3,267.5	4,336.1	1.88	1.88	0.00
11,680.0	91.40	317.80	7,485.8	2,901.7	-3,310.0	4,398.9	0.81	0.16	0.79
11,743.0	90.20	318.00	7,484.9	2,948.5	-3,352.3	4,461.7	1.93	-1.90	0.32
11,806.0	89.50	318.10	7,485.1	2,995.3	-3,394.4	4,524.5	1.12	-1.11	0.16
11,870.0	90.80	318.10	7,484.9	3,042.9	-3,437.1	4,588.2	2.03	2.03	0.00
11,933.0	89.80	318.10	7,484.6	3,089.8	-3,479.2	4,651.0	1.59	-1.59	0.00

<b>Company:</b>	EOG Resources, Inc - RM	<b>Local Co-ordinate Reference:</b>	Well Critter Creek #12-08H
<b>Project:</b>	Weld County, CO	<b>TVD Reference:</b>	WELL @ 5319.0usft (SST #53)
<b>Site:</b>	Sec 8, T11N,R63W, 6th PM	<b>MD Reference:</b>	WELL @ 5319.0usft (SST #53)
<b>Well:</b>	Critter Creek #12-08H	<b>North Reference:</b>	True
<b>Wellbore:</b>	Wellbore #1	<b>Survey Calculation Method:</b>	Minimum Curvature
<b>Design:</b>	Wellbore #1	<b>Database:</b>	EDM 5000.1 Single User Db

**Survey**

Measured Depth (usft)	Inclination (°)	Azimuth (°)	Vertical Depth (usft)	+N/-S (usft)	+E/-W (usft)	Vertical Section (usft)	Dogleg Rate (°/100usft)	Build Rate (°/100usft)	Turn Rate (°/100usft)
11,997.0	88.60	318.00	7,485.5	3,137.4	-3,522.0	4,714.8	1.88	-1.88	-0.16
12,061.0	88.60	317.60	7,487.1	3,184.8	-3,564.9	4,778.6	0.62	0.00	-0.63
12,124.0	89.10	316.70	7,488.3	3,231.0	-3,607.8	4,841.4	1.63	0.79	-1.43
12,188.0	89.60	316.20	7,489.1	3,277.4	-3,651.9	4,905.3	1.10	0.78	-0.78
12,252.0	89.80	315.90	7,489.4	3,323.5	-3,696.3	4,969.3	0.56	0.31	-0.47
12,315.0	89.40	318.10	7,489.8	3,369.5	-3,739.3	5,032.1	3.55	-0.63	3.49
12,379.0	90.20	318.70	7,490.1	3,417.4	-3,781.7	5,095.9	1.56	1.25	0.94
12,441.0	91.40	318.10	7,489.2	3,463.8	-3,822.9	5,157.6	2.16	1.94	-0.97
12,505.0	90.30	318.70	7,488.2	3,511.6	-3,865.4	5,221.4	1.96	-1.72	0.94
12,569.0	90.50	318.10	7,487.8	3,559.5	-3,907.9	5,285.1	0.99	0.31	-0.94
12,633.0	89.80	318.10	7,487.6	3,607.1	-3,950.6	5,348.9	1.09	-1.09	0.00
12,697.0	90.30	318.00	7,487.6	3,654.7	-3,993.4	5,412.7	0.80	0.78	-0.16
12,793.0	91.80	316.90	7,485.8	3,725.4	-4,058.3	5,508.4	1.94	1.56	-1.15
<b>TD</b>									
12,841.0	91.80	316.90	7,484.3	3,760.4	-4,091.1	5,556.3	0.00	0.00	0.00

**Survey Annotations**

Measured Depth (usft)	Vertical Depth (usft)	Local Coordinates		Comment
		+N/-S (usft)	+E/-W (usft)	
1,514.0	1,514.0	0.0	0.0	First MWD Survey
7,631.0	7,420.1	201.4	-337.8	Crossed Hard Line @ 7631' MD
12,841.0	7,484.3	3,760.4	-4,091.1	TD

Checked By: _____	Approved By: _____	Date: _____
-------------------	--------------------	-------------





---

---

## Survey Certification Sheet

EOG Resources Inc.  
Company

RM-11220  
Job Number

5/2/11  
Date

Sec 8,T11N,R63W, 6<sup>th</sup> PM  
Lease

Critter Creek #12-08H  
Well Name

Weld, CO  
County & State

Surveyed from a depth of: 1514 feet to 12841 feet MD

Type of Survey: MWD

Directional Supervisor/Surveyor: Mark Snyder

The data and calculations for this survey have been checked by me and conform to the standards and procedures set forth by **The Directional Drilling Company (DDC)**. This report represents a true and correct Directional survey of this well based on the original data obtained at the well site. Wellbore Coordinates are calculated using minimum curvature.

Digitally signed by  
Larry Wright  
DN: cn=Larry Wright,  
o, ou,  
email=larryw@direct  
ionaldrillers.com,  
c=US  
Date: 2011.05.03  
14:34:56 -05'00'

Larry Wright  
MWD General Manager