

Downhole Schematic for SGU 8508A-36 B36 496



Project :North Piceance

Area : Story Gulch

As Of : 09/14/2011

API # :05045198370000

County :

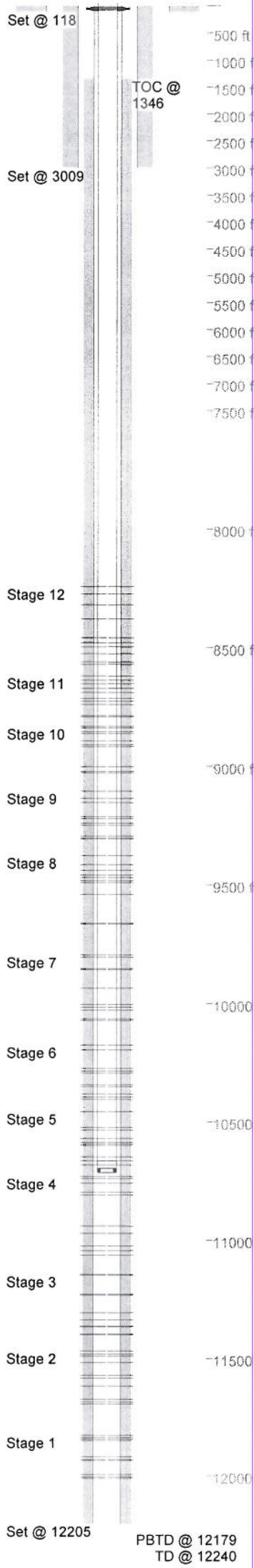
GL : 8352.0 ft

Surface Location : Lot2 Sec 36 T4S - R96W 6th PM

BHL : SENE-36-4S-96 W 6th PM

KB to GL : 22.0 ft

KB : 8374.0 ft



Casing Details		Hole	Casing	Mass	Set At	Length	Thread	Grade	Description
Section	Conductor	30.000							
Surface	Surface	14.750							
			9.625	0	3,009	2	LT&C		Float Shoe
				36	3,008	44	LT&C	J55	Casing
				0	2,963	2	LT&C		Float Collar
			9.625	36	2,962	171	LT&C	J55	Casing
				0	2,791	2	LT&C		Parasite sub
			9.625	36	2,789	1,390	LT&C	J55	Casing
				0	1,400	2	LT&C		Port Collar
			9.625	36	1,397	1,367	LT&C	J55	Casing
			9.625	0	31	6	LT&C		Mandrel
			9.625	36	25	27	LT&C	J-55	Landing jt
	Production	7.875	5.0	0	12,205	2	Butt	P-110	Guide Shoe
			4.5	11.6	12,204	22	Butt	P-110	Short Jt. A
			5.0	0	12,181	2	Butt	P-110	Float Collar
			4.5	11.6	12,180	1,460	Butt	P-110	Casing
			4.5	11.6	10,720	21	Butt	P-110	Marker jt B
			4.5	11.6	10,699	2,641	Butt	P-110	Casing
			4.5	11.6	8,057	21	Butt	P-110	Marker Jt C
			4.5	11.6	8,036	8,039	Butt	P-110	Casing
Cement Details									
Section	Sequence		Top	Density	Blend / Additives				
Surface	Lead		0	8.6	Mud Push II / 49 water+250 lbsD182+1372 lbs D031				
	Lead		0	9.0	9.0 LiteCRETE / LiteCRETE				
					blend=0.8%D079+0.8%D065+0.5%D013+0.2%D046+0.25ppsD029				
	Production	Scavenger	0	9.8	50 bbls MudPush /				
					47bblsH2O=4360lbD031+260lbsD182+5500lbsD024				
	Lead		1,346	12.0	12 TXI / D049+1%D079+0.1%D112+0.8%D13+0.5%D46+0.25lb/sk				
					D029				
	Tail		7,786	13.0	13# Poz A /				
					+35%D178+5%D044+3%D020+0.4%D182+0.75D112+0.30%D201+0.				
					2D065+0.2%D046+0.25ppsD029				
	Conductor	Lead	0	13.0	Control set c /				
Tubing and Downhole Equipment									
O.D.	Length	Depth	Description						
0.000	22.00	22.00	KB						
7.063	0.80	22.80	7 1/16" Woodgroup						
3.063	10,644.70	10,667.50	345 jts. 2 3/8" L80 4.7# USA Tenaris tbg.						
3.063	1.10	10,668.60	2 3/8" flag nipple						
3.063	30.01	10,698.60	1 jt. 2 3/8" L80 4.7# USA Tenaris tbg.						
3.063	1.10	10,699.70	2 3/8" Seating nipple						
3.063	10.10	10,709.80	2 3/8" L80 pup jt.						
Perforations									
Stage 1					Stage 4				
Date	From	To	Shots	Date	From	To	Shots		
07/29/2011	12,012	12,013	3	08/09/2011	11,065	11,066	3		
	12,005	12,006	3		11,046	11,047	3		
	11,996	11,997	3		11,026	11,027	3		
	11,936	11,937	3		10,973	10,974	3		
	11,932	11,933	3		10,942	10,943	3		
	11,920	11,921	3		10,811	10,812	3		
	11,850	11,851	3		10,801	10,802	3		
	11,844	11,845	3		10,762	10,763	3		
	11,838	11,839	3		10,743	10,744	3		
	11,828	11,829	3		10,733	10,734	3		
Stage 10				Stage 5					
Date	From	To	Shots	Date	From	To	Shots		
08/16/2011	9,028	9,029	3	08/10/2011	10,685	10,686	3		
	9,022	9,023	3		10,666	10,667	3		
	9,002	9,003	3		10,650	10,651	3		
	8,918	8,919	3		10,602	10,603	3		
	8,910	8,911	3		10,595	10,596	3		
	8,893	8,894	3		10,589	10,590	3		
	8,862	8,863	3		10,572	10,573	3		
	8,855	8,856	3		10,536	10,537	3		
	8,838	8,839	3		10,525	10,526	3		
	8,833	8,834	3		10,458	10,459	3		
Stage 11				Stage 6					
Date	From	To	Shots	Date	From	To	Shots		
08/16/2011	8,791	8,792	3	08/11/2011	10,406	10,407	3		
	8,786	8,787	3		10,397	10,398	3		
	8,740	8,741	3		10,383	10,384	3		
	8,726	8,727	3		10,352	10,353	3		
	8,715	8,716	3		10,344	10,345	3		
	8,690	8,691	3		10,295	10,296	3		
	8,673	8,674	3		10,286	10,287	3		
	8,654	8,655	3		10,275	10,276	3		
	8,638	8,639	3		10,196	10,197	3		
	8,620	8,621	3		10,175	10,176	3		
Stage 12				Stage 7					
Date	From	To	Shots	Date	From	To	Shots		
08/17/2011	8,572	8,573	3	08/12/2011	10,072	10,073	3		
	8,561	8,562	3		10,065	10,066	3		
	8,526	8,527	3		10,028	10,029	3		
	8,498	8,499	3		10,016	10,017	3		
	8,480	8,481	3		10,004	10,005	3		
	8,460	8,461	3		9,936	9,937	3		
	8,380	8,381	3		9,857	9,858	3		
	8,320	8,321	3		9,853	9,854	3		
	8,275	8,276	3		9,804	9,805	3		
	8,245	8,246	3		9,795	9,796	3		
Stage 2				Stage 8					
Date	From	To	Shots	Date	From	To	Shots		
08/02/2011	11,695	11,696	3	08/13/2011	9,666	9,667	3		
	11,686	11,687	3		9,662	9,663	3		
	11,674	11,675	3		9,540	9,541	3		
	11,618	11,619	3		9,492	9,493	3		
	11,585	11,586	3		9,484	9,485	3		
	11,573	11,574	3		9,470	9,471	3		
	11,519	11,520	3		9,459	9,460	3		
	11,492	11,493	3		9,440	9,441	3		
	11,483	11,484	3		9,416	9,417	3		
	11,470	11,471	3		9,378	9,379	3		
Stage 3				Stage 9					
Date	From	To	Shots	Date	From	To	Shots		
08/08/2011	11,401	11,402	3	08/15/2011	9,308	9,309	3		
	11,398	11,399	3		9,303	9,304	3		
	11,367	11,368	3		9,295	9,296	3		
	11,364	11,365	3		9,250	9,251	3		
	11,337	11,338	3		9,241	9,242	3		
	11,307	11,308	3		9,222	9,223	3		
	11,233	11,234	3		9,214	9,215	3		
	11,229	11,230	3		9,154	9,155	3		
	11,149	11,150	3		9,137	9,138	3		
	11,145	11,146	3		9,106	9,107	3		