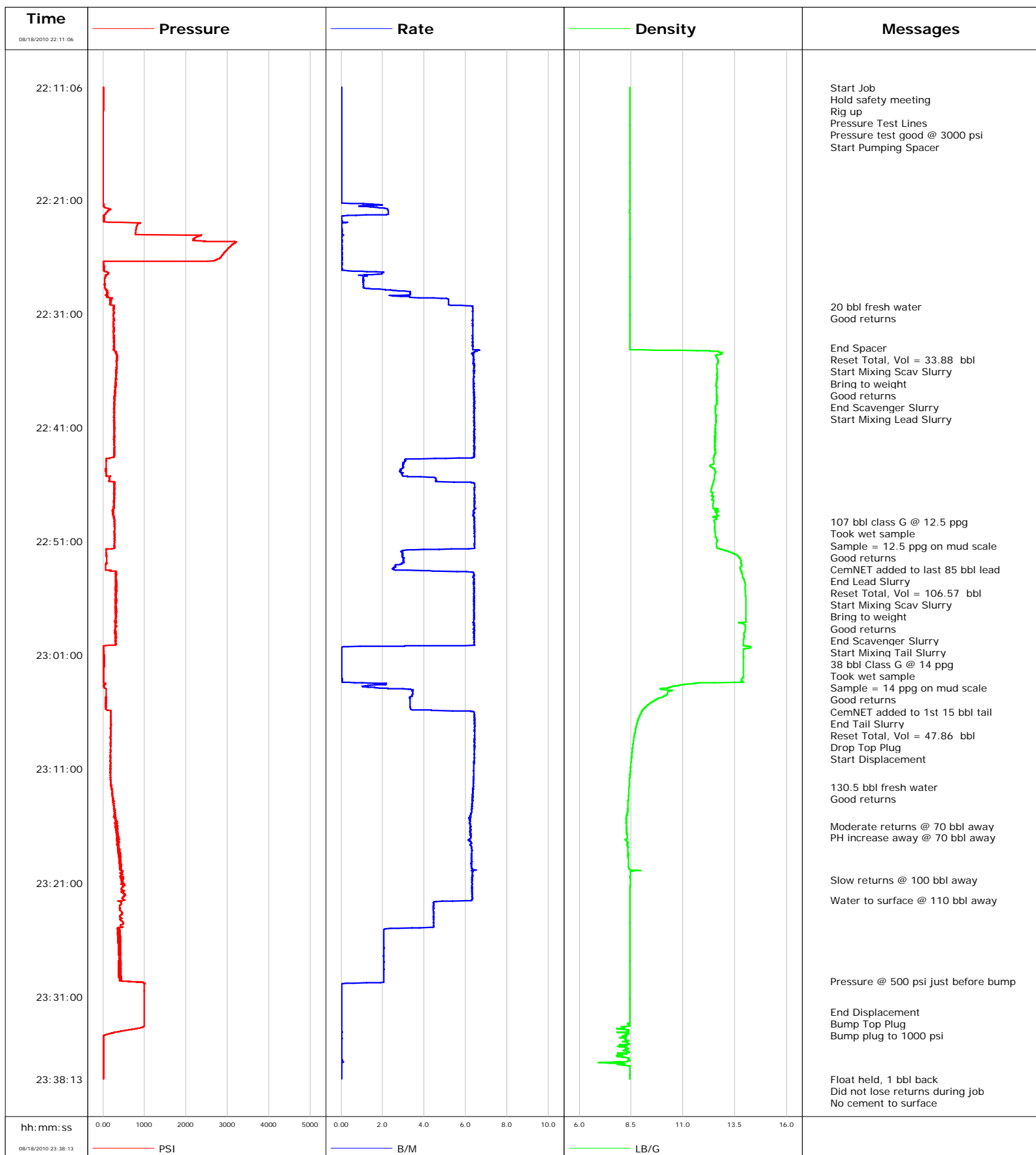


**Well** WF15C-22 K22 596  
**Field** N Parachte  
**Engineer** Dave Wanczyk  
**Country** United States

**Client** Encana  
**SIR No.** BAD4-00144  
**Job Type** 9 5/8" Surface Casing  
**Job Date** 08-18-2010





Well			Field	Job Start	Customer	Job Number
WF15C-22 K22 596			N Parachte	Aug/18/2010	Encana	BAD4-00144
Date	Time 24-hr clock	Treating Pressure PSI	Flow Rate B/M	Density LB/G	Volume BBL	Message
08/18/2010	22:25:05	3070	0.0	8.44	2.2	
08/18/2010	22:26:45	31	0.0	8.44	2.2	
08/18/2010	22:28:25	43	1.1	8.44	3.7	
08/18/2010	22:30:05	196	5.2	8.44	8.9	
08/18/2010	22:30:20					20 bbl fresh water
08/18/2010	22:30:20	255	6.3	8.44	10.3	
08/18/2010	22:30:21					Good returns
08/18/2010	22:30:21	254	6.3	8.44	10.4	
08/18/2010	22:31:45	256	6.3	8.44	19.3	
08/18/2010	22:33:25	258	6.3	8.44	29.9	
08/18/2010	22:34:01					End Spacer
08/18/2010	22:34:01	271	6.3	8.44	33.7	
08/18/2010	22:34:03					Reset Total, Vol = 33.88 bbl
08/18/2010	22:34:03	268	6.3	8.44	33.9	
08/18/2010	22:34:07					Start Mixing Scav Slurry
08/18/2010	22:34:07	264	6.3	8.44	34.3	
08/18/2010	22:34:13					Bring to weight
08/18/2010	22:34:13	285	6.7	9.81	35.0	
08/18/2010	22:34:16					Good returns
08/18/2010	22:34:16	275	6.6	12.27	35.3	
08/18/2010	22:35:05	349	6.4	12.69	40.5	
08/18/2010	22:35:28					End Scavenger Slurry
08/18/2010	22:35:28	336	6.4	12.63	42.9	
08/18/2010	22:35:30					Start Mixing Lead Slurry
08/18/2010	22:35:30	330	6.4	12.63	43.2	
08/18/2010	22:36:45	311	6.4	12.64	51.2	
08/18/2010	22:38:25	283	6.4	12.62	61.8	
08/18/2010	22:40:05	260	6.4	12.61	72.5	
08/18/2010	22:41:45	281	6.4	12.54	83.2	
08/18/2010	22:43:25	285	6.4	12.51	93.9	
08/18/2010	22:45:05	75	2.9	12.54	99.9	
08/18/2010	22:46:45	277	6.4	12.44	108.9	
08/18/2010	22:48:25	245	6.4	12.64	119.6	
08/18/2010	22:49:16					107 bbl class G @ 12.5 ppg
08/18/2010	22:49:16					Took wet sample
08/18/2010	22:49:16	280	6.4	12.52	125.0	
08/18/2010	22:49:17					Sample = 12.5 ppg on mud scale
08/18/2010	22:49:17					Good returns
08/18/2010	22:49:17	273	6.4	12.52	125.1	
08/18/2010	22:49:18					CemNET added to last 85 bbl lead
08/18/2010	22:49:18	274	6.4	12.52	125.2	
08/18/2010	22:50:05	266	6.5	12.54	130.3	
08/18/2010	22:51:39					End Lead Slurry
08/18/2010	22:51:39	208	6.1	12.75	140.3	
08/18/2010	22:51:40					Reset Total, Vol = 106.57 bbl
08/18/2010	22:51:40	157	6.1	12.75	140.4	
08/18/2010	22:51:45	77	3.5	12.92	140.8	
08/18/2010	22:51:46					Start Mixing Scav Slurry
08/18/2010	22:51:46	77	3.2	12.97	140.9	
08/18/2010	22:51:49					Bring to weight
08/18/2010	22:51:49	78	3.0	13.04	141.0	
08/18/2010	22:51:50					Good returns
08/18/2010	22:51:50	76	2.9	13.10	141.1	
08/18/2010	22:53:25	62	2.5	13.76	145.6	

Well			Field	Job Start	Customer	Job Number
WF15C-22 K22 596			N Parachte	Aug/18/2010	Encana	BAD4-00144
Date	Time 24-hr clock	Treating Pressure PSI	Flow Rate B/M	Density LB/G	Volume BBL	Message
08/18/2010	22:54:22	301	6.4	13.94	151.0	
08/18/2010	22:54:23					Start Mixing Tail Slurry
08/18/2010	22:54:23	314	6.4	13.94	151.1	
08/18/2010	22:55:05	304	6.4	13.98	155.6	
08/18/2010	22:56:45	303	6.4	14.04	166.2	
08/18/2010	22:58:25	327	6.4	14.00	176.9	
08/18/2010	22:58:47					38 bbl Class G @ 14 ppg
08/18/2010	22:58:47					Took wet sample
08/18/2010	22:58:47	308	6.4	14.00	179.3	
08/18/2010	22:58:48					Sample = 14 ppg on mud scale
08/18/2010	22:58:48					Good returns
08/18/2010	22:58:48	284	6.4	14.00	179.4	
08/18/2010	22:58:49					CemNET added to 1st 15 bbl tail
08/18/2010	22:58:49	284	6.4	14.00	179.5	
08/18/2010	23:00:05					End Tail Slurry
08/18/2010	23:00:05	289	6.4	13.91	187.6	
08/18/2010	23:00:17					Reset Total, Vol = 47.86 bbl
08/18/2010	23:00:17	6	0.0	14.27	188.3	
08/18/2010	23:00:21					Drop Top Plug
08/18/2010	23:00:21	7	0.0	14.27	188.3	
08/18/2010	23:00:23					Start Displacement
08/18/2010	23:00:23	7	0.0	14.19	188.3	
08/18/2010	23:01:45	13	0.0	13.91	188.3	
08/18/2010	23:03:25	6	0.7	12.50	188.3	
08/18/2010	23:05:05	69	3.3	9.53	193.0	
08/18/2010	23:06:45	191	6.4	8.83	201.3	
08/18/2010	23:08:25	187	6.4	8.63	212.1	
08/18/2010	23:10:05	181	6.4	8.52	222.8	
08/18/2010	23:11:45	175	6.4	8.44	233.4	
08/18/2010	23:12:34					130.5 bbl fresh water
08/18/2010	23:12:34	198	6.4	8.41	238.6	
08/18/2010	23:12:35					Good returns
08/18/2010	23:12:35	202	6.4	8.40	238.8	
08/18/2010	23:13:25	233	6.3	8.38	244.0	
08/18/2010	23:15:05	298	6.2	8.29	254.6	
08/18/2010	23:16:00					Moderate returns @ 70 bbl away
08/18/2010	23:16:00	308	6.2	8.28	260.2	
08/18/2010	23:16:45	333	6.2	8.30	264.9	
08/18/2010	23:17:00					PH increase away @ 70 bbl away
08/18/2010	23:17:00	383	6.2	8.31	266.5	
08/18/2010	23:18:25	360	6.3	8.36	275.3	
08/18/2010	23:20:05	450	6.3	8.46	285.8	
08/18/2010	23:20:45					Slow returns @ 100 bbl away
08/18/2010	23:20:45	437	6.3	8.46	290.1	
08/18/2010	23:21:45	493	6.3	8.44	296.4	
08/18/2010	23:22:30					Water to surface @ 110 bbl away
08/18/2010	23:22:30	507	6.3	8.44	301.1	
08/18/2010	23:23:25	416	4.4	8.44	305.4	
08/18/2010	23:25:05	393	2.1	8.44	312.5	
08/18/2010	23:26:45	392	2.1	8.44	316.0	
08/18/2010	23:28:25	375	2.1	8.44	319.4	
08/18/2010	23:29:38					Pressure @ 500 psi just before bump
08/18/2010	23:29:38	467	2.1	8.44	321.9	
08/18/2010	23:30:05	999	0.0	8.44	322.2	

Well			Field		Job Start	Customer	Job Number
WF15C-22 K22 596			N Parachte		Aug/18/2010	Encana	BAD4-00144
Date	Time 24-hr clock	Treating Pressure PSI	Flow Rate B/M	Density LB/G	Volume BBL	Message	
08/18/2010	23:32:20					End Displacement	
08/18/2010	23:32:20	998	0.0	8.45	322.3		
08/18/2010	23:32:21					Bump Top Plug	
08/18/2010	23:32:21	998	0.0	8.45	322.3		
08/18/2010	23:32:22					Bump plug to 1000 psi	
08/18/2010	23:32:22	998	0.0	8.45	322.3		
08/18/2010	23:33:25	998	0.0	8.38	322.3		
08/18/2010	23:35:05	3	0.0	8.33	322.3		
08/18/2010	23:36:45	4	0.0	7.49	322.3		
08/18/2010	23:38:13	5	0.0	8.45	322.3		
08/18/2010	23:38:13					Float held, 1 bbl back	
08/18/2010	23:38:13					Did not lose returns during job	
08/18/2010	23:38:13					No cement to surface	
08/18/2010	23:38:13					End Job	

Post Job Summary

Average Pump Rates, bbl/min					Volume of Fluid Injected, bbl			
Slurry 3.9	N2	Mud 0.0	Maximum Rate 6.7	Total Slurry 145.0	Mud 0.0	Spacer 20.0	N2	
Treating Pressure Summary, psi				Breakdown Fluid				
Maximum 3221	Final 0	Average 352	Bump Plug to 1000	Breakdown	Type	Volume	Density	
Avg. N2 Percent	Designed Slurry Volume 145.0 bbl		Displacement 130.5 bbl	Mix Water Temp 75 degF	Cement Circulated to Surface? <input type="checkbox"/>	Volume		
					Washed Thru Perfs <input type="checkbox"/>	To		
Customer or Authorized Representative Larry Candelaria			Schlumberger Supervisor Dave Wanczyk			Circulation Lost <input type="checkbox"/>	Job Completed <input checked="" type="checkbox"/>	
						-	-	