

As Drilled Well Location Plat Dixon Federal B11

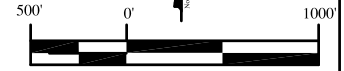
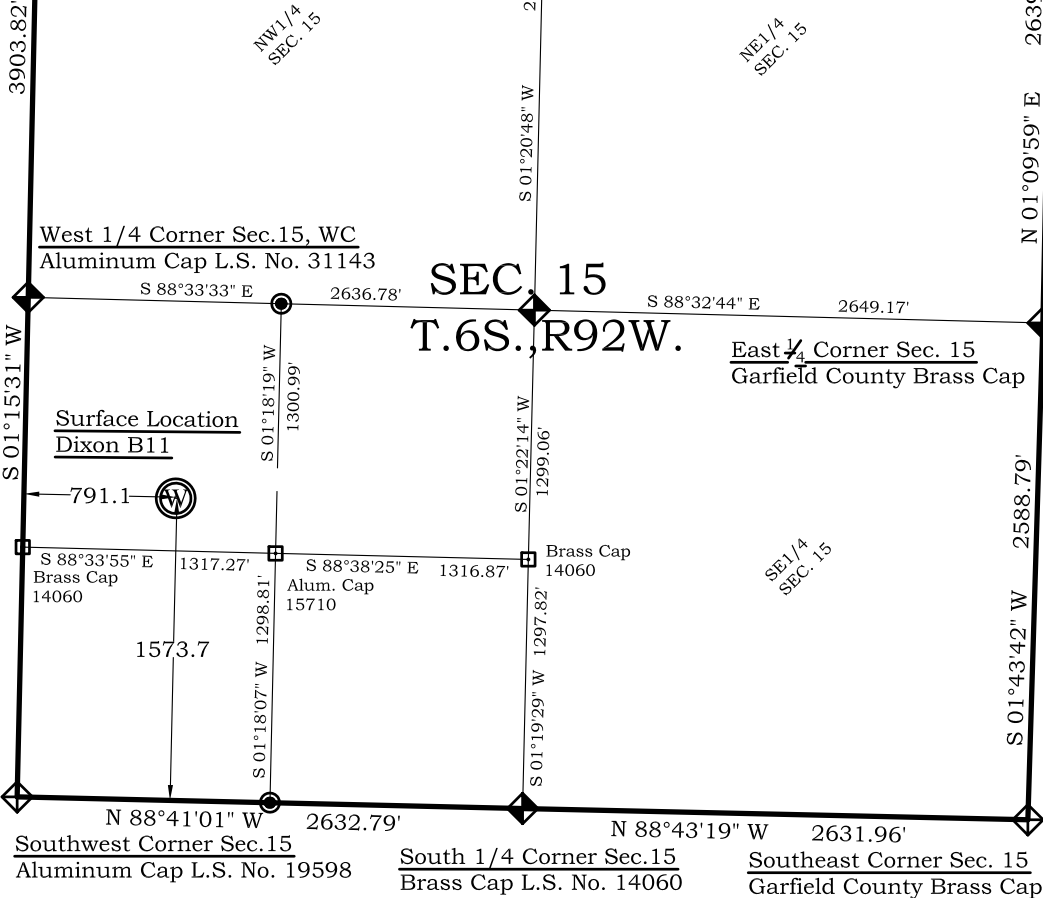
Northwest Corner Sec.15
Stone Monument 17' WC

N 88°46'28" W 2640.73'

N 89°07'55" W 2640.94'

North 1/4 Corner Sec.15
Aluminum Cap L.S. No. 24303

Northeast Corner Sec. 15
Garfield County Brass Cap



Graphic Scale in Feet
1"= 1000'

Legend

- ◊ - Field Surveyed Section Corner
- ◈ - Field Surveyed Quarter Corner
- ⊙ - Calculated Section Corner Location
- ◻ - Field Surveyed 1/6 Corner

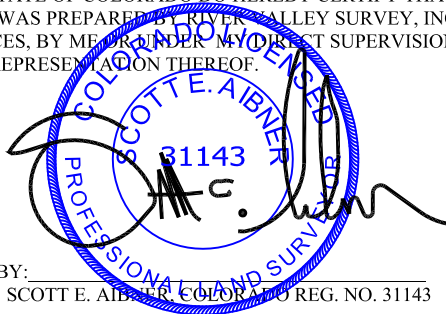
Dixon B11 As Drilled Surface Location

1574' FSL
791' FWL
Gnd El= 5519.6
NAD83
Lat: 39.524097934°N
Long: 107.659661373°W
NAD27
Lat: 39.524117377°N
Long: 107.659046445°W
UTM 13 NORTH
NAD 1983
Northing
14364528.519
Easting
890379.301

Prepared For Antero Resources
As Drilled Dixon Federal B11 Well Situate in The
NW 1/4 SW 1/4 Section 15, Township 6 South, Range 92 West
of the 6 th. Principal Meridian, County of Garfield, State of
Colorado

SURVEYOR'S CERTIFICATE

I, SCOTT E. AIBNER, A REGISTERED LAND SURVEYOR, LICENSED UNDER THE LAWS OF THE STATE OF COLORADO DO HEREBY CERTIFY THAT THE SURVEY SHOWN HEREON WAS PREPARED BY RIVER VALLEY SURVEY, INC., FOR ANTERO RESOURCES, BY ME OR UNDER MY DIRECT SUPERVISION AND THAT THIS PLAT IS A TRUE REPRESENTATION THEREOF.



BY: _____
SCOTT E. AIBNER, COLORADO REG. NO. 31143

Notes:

- 1.) LATITUDE AND LONGITUDE COORDINATES ARE DIFFERENTIALLY CORRECTED AND BASED ON PUBLISHED NGS CONTROL STATION "WDP-5". SYSTEM: UTM ZONE: 13 NORTH DATUM: NAD 1983 (CONUS)
- 2.) ELEVATIONS ARE BASED ON NAVD OF 1929.
- 3.) ALL BOTTOM AND TOP HOLE LOCATIONS ARE MEASURED 90 DEGREES FROM SECTION LINE.
- 4.) USGS QUADRANGLE MAP "SILT CO".
- 5.) CURRENT SURFACE LAND USE: OPEN RANGELAND
- 6.) PDOP AT THE TIME OF LOCATION OF SURFACE WELL = 1.4



River Valley Survey, Inc.
110 East 3rd. Street, Suite 207
Rifle, Colorado 81650
Ph: 970-379-7846

Project: Dixon B Pad

Proj. No. 06001-07

As Drilled Well Location Plat
Prepared For Antero Resources

Field Date: 09-15-11

Scale: 1"= 1000'

Situate In:
NW1/4SW1/4 Section 15, T6S., R. 92
W. of the 6th P.M., Garfield County,
Colorado

Date: 09-29-11

Sheet: 1 of 1

