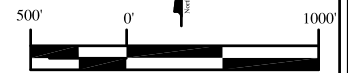
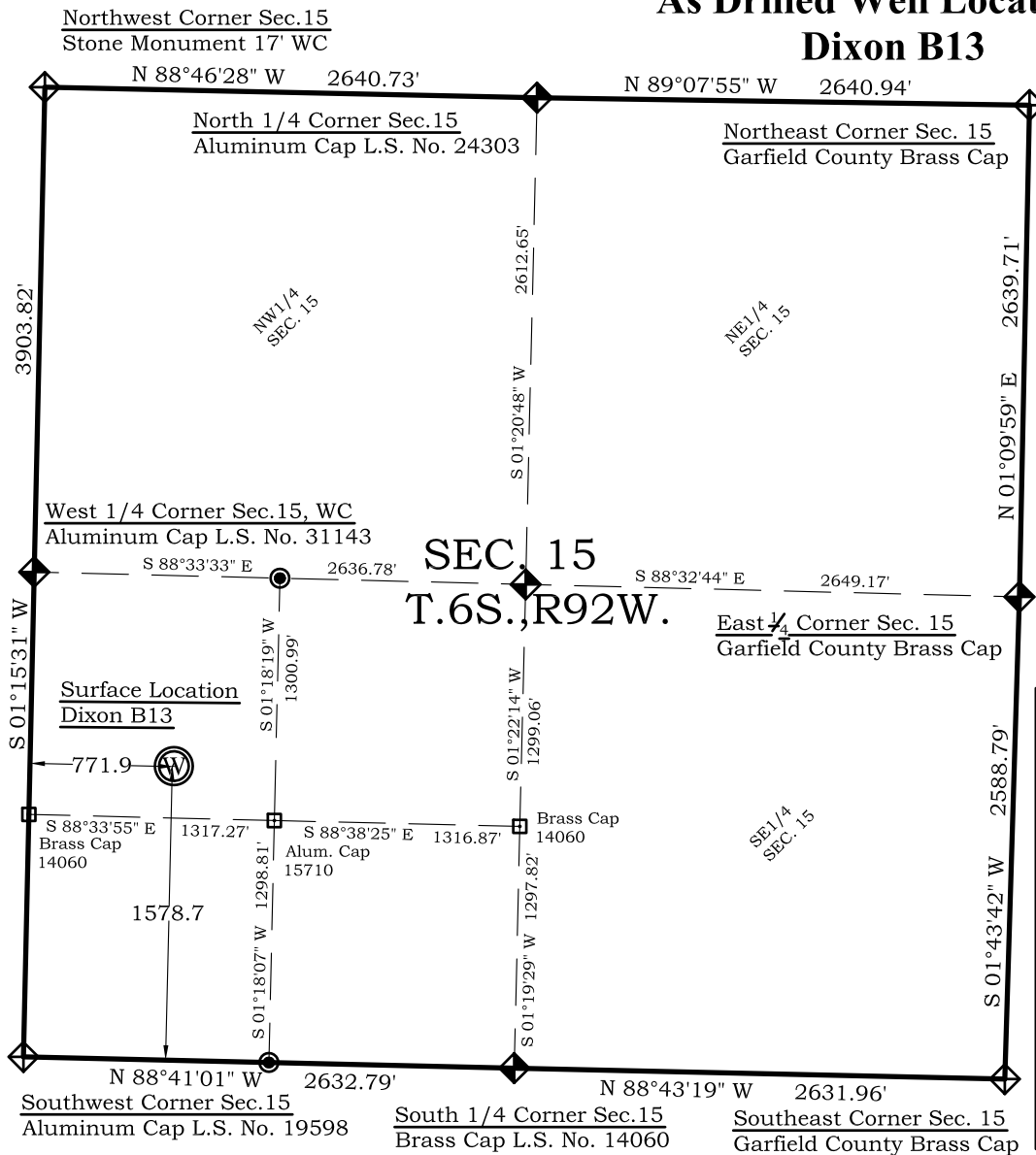


# As Drilled Well Location Plat

## Dixon B13



Graphic Scale in Feet  
1"= 1000'

### Legend

- ◆ - Field Surveyed Section Corner
- ◆ - Field Surveyed Quarter Corner
- ⊙ - Calculated Section Corner Location
- - Field Surveyed 1/6 Corner

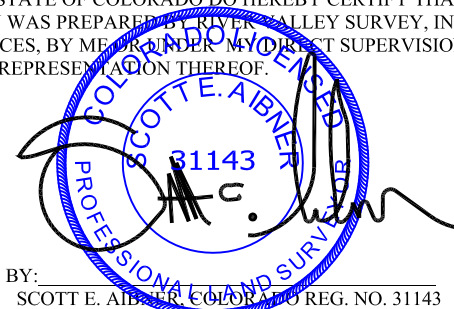
### Dixon B13 As Drilled Surface Location

1579' FSL  
772' FWL  
Gnd El= 5519.6  
**NAD83**  
Lat: 39.524111255°N  
Long: 107.659729711°W  
**NAD27**  
Lat: 39.524130698°N  
Long: 107.659114780°W  
UTM 13 NORTH  
**NAD 1983**  
Northing  
14364533.940  
Easting  
890360.170

Prepared For Antero Resources  
As Drilled Dixon B13 Well Situate in The NW1/4SW1/4  
Section 15, Township 6 South, Range 92 West of the 6 th.  
Principal Meridian, County of Garfield, State of Colorado

### SURVEYOR'S CERTIFICATE

I, SCOTT E. AIBNER, A REGISTERED LAND SURVEYOR, LICENSED UNDER THE LAWS OF THE STATE OF COLORADO DO HEREBY CERTIFY THAT THE SURVEY SHOWN HEREON WAS PREPARED BY RIVER VALLEY SURVEY, INC., FOR ANTERO RESOURCES, BY MEANS UNDER MY DIRECT SUPERVISION AND THAT THIS PLAT IS A TRUE REPRESENTATION THEREOF.

BY:   
SCOTT E. AIBNER, COLORADO REG. NO. 31143

### Notes:

- 1.) LATITUDE AND LONGITUDE COORDINATES ARE DIFFERENTIALLY CORRECTED AND BASED ON PUBLISHED NGS CONTROL STATION "WDP-5".  
SYSTEM: UTM ZONE: 13 NORTH DATUM: NAD 1983 (CONUS)
- 2.) ELEVATIONS ARE BASED ON NAVD OF 1929.
- 3.) ALL BOTTOM AND TOP HOLE LOCATIONS ARE MEASURED 90 DEGREES FROM SECTION LINE.
- 4.) USGS QUADRANGLE MAP "SILT CO".
- 5.) CURRENT SURFACE LAND USE: OPEN RANGELAND
- 6.) PDOP AT THE TIME OF LOCATION OF SURFACE WELL = 1.4



**River Valley Survey, Inc.**  
110 East 3rd. Street, Suite 207  
Rifle, Colorado 81650  
Ph: 970-379-7846

Project: Dixon B Pad

Proj. No. 06001-07

Field Date: 09-15-11

Scale: 1"= 1000'

Date: 09-29-11

Sheet: 1 of 1

**As Drilled Well Location Plat**  
**Prepared For Antero Resources**

**Situate In:**  
NW1/4SW1/4 Section 15, T6S., R. 92  
W. of the 6th P.M., Garfield County,  
Colorado

