



End of Well Report

Prepared for



Dixon B13

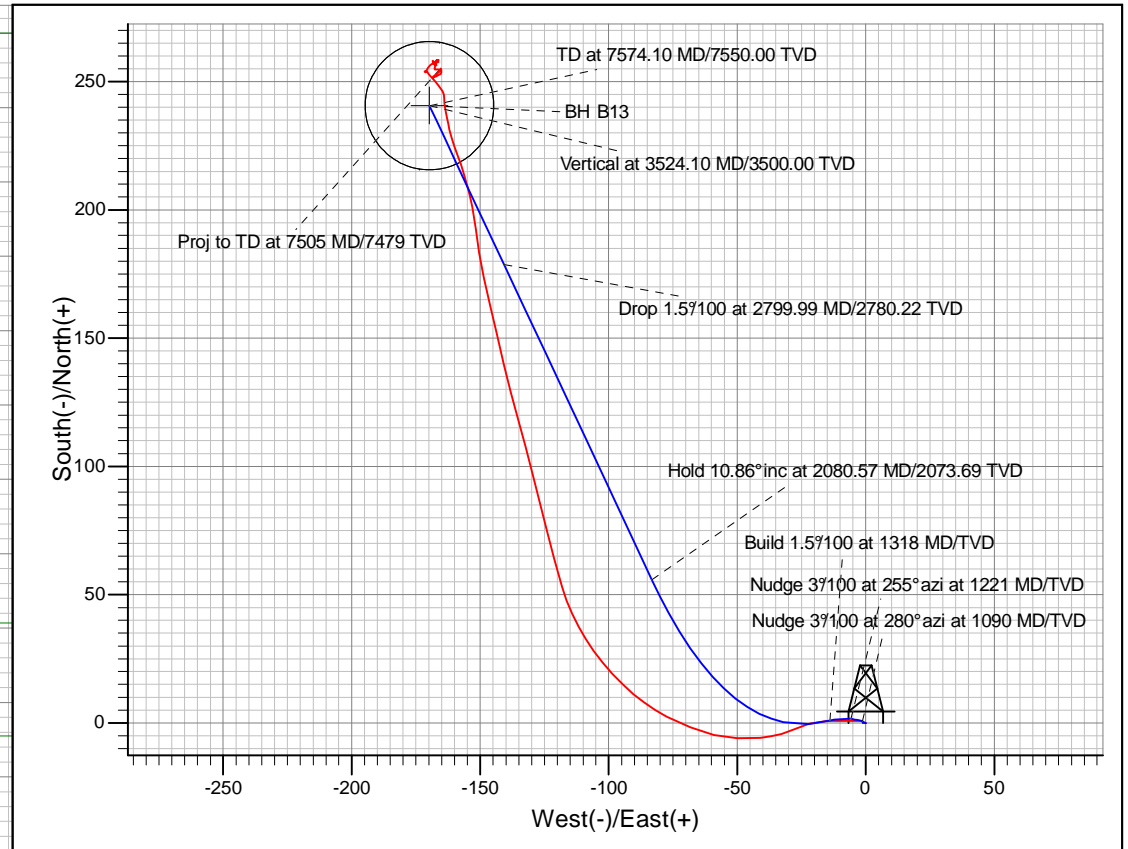
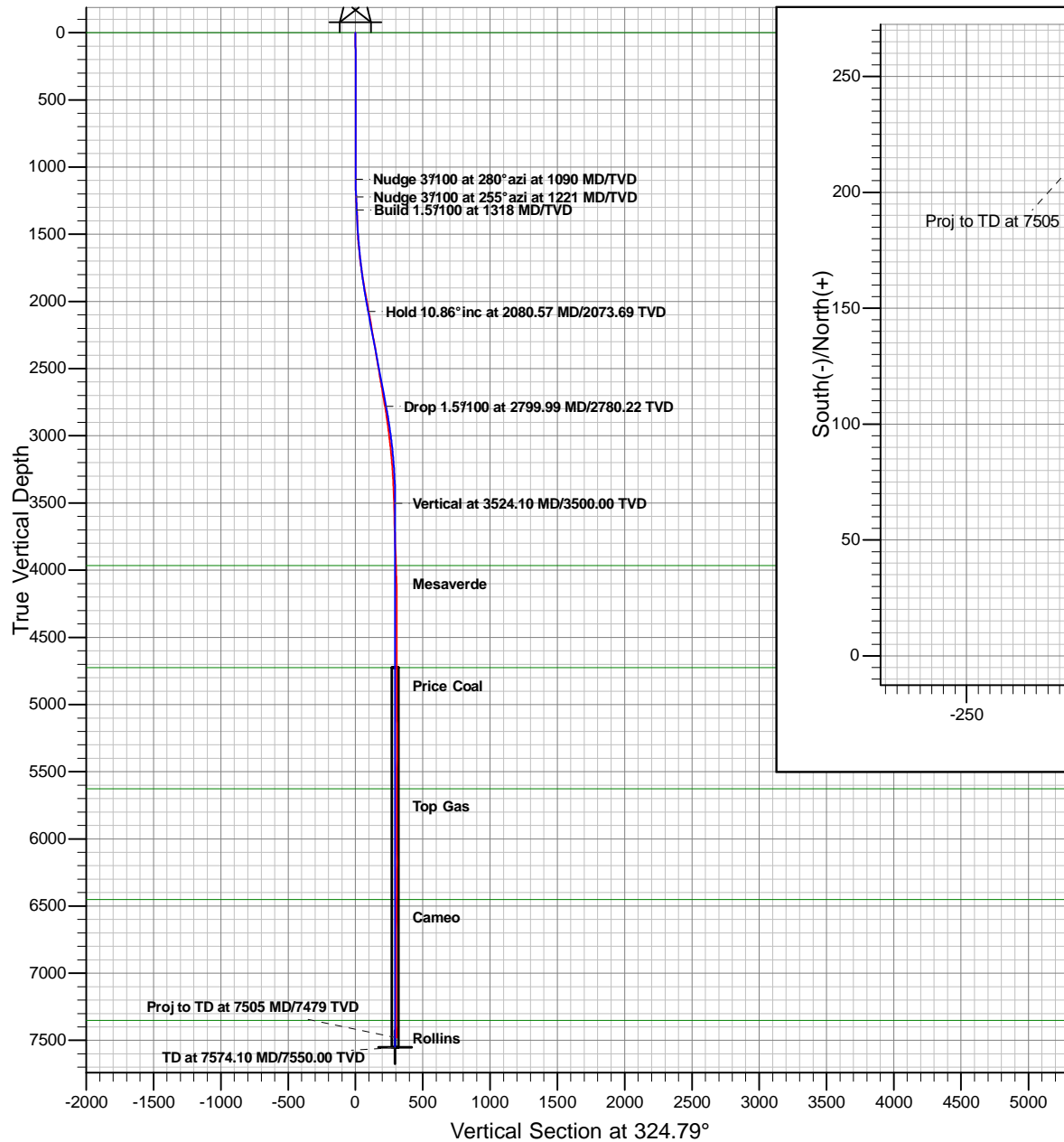
August 12, 2011

ARK Directional Services Inc
191 University Blvd, # 601
Denver, CO 80206



Antero Resources

Dixon B
Antero Dixon B13 (111312)
Planned Vs. Actual



Magnetic Field Details

Total Correction to Grid N: +11.88°

Model: IGRF2010
Date: 15-Aug-11
Grid Conv: -1.69
Mag. Dec: 10.18°
Field Strength: 52296
Dip: 65.82°



PROJECT DETAILS: Dixon

Geodetic System: Universal Transverse Mercator
Datum: North American Datum 1983
Ellipsoid: GRS 1980
Zone: Zone 13N (108 W to 102 W)
System Datum: Mean Sea Level

REFERENCE INFORMATION

Co-ordinate (N/E) Reference: Well Antero Dixon B13 (111312) - Slot B13, Grid North
Vertical (TVD) Reference: KB @ 5544.00ft
Section (VS) Reference: Slot - B13(0.00N, 0.00E)
Measured Depth Reference: KB @ 5544.00ft
Calculation Method: Minimum Curvature

Plan: Dixon B13 P03
Created By: ARK Directional Services Inc.
Date: 9:22, August 12 2011

Antero Resources

Dixon

Dixon B

Antero Dixon B13 (111312) - Slot B13

Dixon B13

Survey: Dixon B13

Standard Survey Report

12 August, 2011

ARK Directional Services

Survey Report

Company:	Antero Resources	Local Co-ordinate Reference:	Well Antero Dixon B13 (111312) - Slot B13
Project:	Dixon	TVD Reference:	KB @ 5544.00ft
Site:	Dixon B	MD Reference:	KB @ 5544.00ft
Well:	Antero Dixon B13 (111312)	North Reference:	Grid
Wellbore:	Dixon B13	Survey Calculation Method:	Minimum Curvature
Design:	Dixon B13	Database:	EDM SERVER DB

Project	Dixon		
Map System:	Universal Transverse Mercator	System Datum:	Mean Sea Level
Geo Datum:	North American Datum 1983		
Map Zone:	Zone 13N (108 W to 102 W)		

Site	Dixon B				
Site Position:		Northing:	14,364,517.56 usft	Latitude:	39.524071000°N
From:	Lat/Long	Easting:	890,418.04 usft	Longitude:	107.659523000°W
Position Uncertainty:	0.00 ft	Slot Radius:	13.20 in	Grid Convergence:	-1.69 °

Well	Antero Dixon B13 (111312) - Slot B13					
Well Position	+N/-S	0.00 ft	Northing:	14,364,533.91 usft	Latitude:	39.524111176°N
	+E/-W	0.00 ft	Easting:	890,360.17 usft	Longitude:	107.659729718°W
Position Uncertainty		0.00 ft	Wellhead Elevation:	ft	Ground Level:	5,520.00 ft

Wellbore	Dixon B13				
Magnetics	Model Name	Sample Date	Declination (°)	Dip Angle (°)	Field Strength (nT)
	IGRF2010	2011/08/15	10.18	65.82	52,296

Design	Dixon B13				
Audit Notes:					
Version:	1.0	Phase:	ACTUAL	Tie On Depth:	0.00
Vertical Section:	Depth From (TVD) (ft)	+N/-S (ft)	+E/-W (ft)	Direction (°)	
	0.00	0.00	0.00	324.79	

Survey Program	Date	2011/08/12			
From (ft)	To (ft)	Survey (Wellbore)	Tool Name	Description	
100.00	920.00	B13 Surf (Dixon B13)	NS-GYRO-MS	North sensing gyrocompassing m/s	
1,027.80	7,505.00	Dixon B13 (Dixon B13)	MWD	MWD - Standard	

Survey										
Measured Depth (ft)	Inclination (°)	Azimuth (°)	Vertical Depth (ft)	+N/-S (ft)	+E/-W (ft)	Vertical Section (ft)	Dogleg Rate (°/100ft)	Build Rate (°/100ft)	Turn Rate (°/100ft)	
920.00	0.16	345.12	920.00	0.24	-1.24	0.91	0.00	0.00	0.00	
1,027.80	0.16	345.12	1,027.80	0.53	-1.32	1.19	0.00	0.00	0.00	
1,059.00	0.22	16.80	1,059.00	0.63	-1.31	1.27	0.38	0.19	101.54	
1,122.00	1.01	273.88	1,121.99	0.78	-1.83	1.70	1.72	1.25	-163.37	
1,185.00	3.52	270.89	1,184.94	0.85	-4.32	3.19	3.99	3.98	-4.75	
1,248.00	4.79	269.66	1,247.77	0.87	-8.88	5.83	2.02	2.02	-1.95	
1,311.00	6.50	269.27	1,310.46	0.81	-15.08	9.35	2.71	2.71	-0.62	
1,374.00	6.68	252.48	1,373.05	-0.34	-22.14	12.48	3.06	0.29	-26.65	
1,436.00	7.21	247.56	1,434.60	-2.91	-29.17	14.44	1.28	0.85	-7.94	
1,531.00	7.91	264.48	1,528.79	-5.82	-41.19	18.99	2.45	0.74	17.81	

ARK Directional Services

Survey Report

Company:	Antero Resources	Local Co-ordinate Reference:	Well Antero Dixon B13 (111312) - Slot B13
Project:	Dixon	TVD Reference:	KB @ 5544.00ft
Site:	Dixon B	MD Reference:	KB @ 5544.00ft
Well:	Antero Dixon B13 (111312)	North Reference:	Grid
Wellbore:	Dixon B13	Survey Calculation Method:	Minimum Curvature
Design:	Dixon B13	Database:	EDM SERVER DB

Survey									
Measured Depth (ft)	Inclination (°)	Azimuth (°)	Vertical Depth (ft)	+N/-S (ft)	+E/-W (ft)	Vertical Section (ft)	Dogleg Rate (°/100ft)	Build Rate (°/100ft)	Turn Rate (°/100ft)
1,594.00	8.39	273.88	1,591.15	-5.92	-50.09	24.04	2.25	0.76	14.92
1,657.00	8.48	282.98	1,653.47	-4.57	-59.21	30.40	2.12	0.14	14.44
1,720.00	9.10	291.46	1,715.74	-1.70	-68.37	38.02	2.28	0.98	13.46
1,783.00	9.40	298.27	1,777.92	2.56	-77.54	46.79	1.80	0.48	10.81
1,846.00	9.71	305.48	1,840.05	8.08	-86.39	56.41	1.96	0.49	11.44
1,909.00	10.42	314.49	1,902.08	15.15	-94.79	67.03	2.74	1.13	14.30
1,972.00	10.42	320.77	1,964.04	23.56	-102.45	78.31	1.80	0.00	9.97
2,035.00	10.28	327.89	2,026.02	32.73	-109.04	89.61	2.04	-0.22	11.30
2,098.00	10.20	335.58	2,088.02	42.57	-114.34	100.71	2.17	-0.13	12.21
2,161.00	10.50	343.49	2,150.00	53.16	-118.28	111.62	2.30	0.48	12.56
2,224.00	10.50	345.38	2,211.94	64.22	-121.36	122.43	0.55	0.00	3.00
2,287.00	10.50	345.38	2,273.89	75.33	-124.26	133.18	0.00	0.00	0.00
2,350.00	10.20	345.86	2,335.86	86.29	-127.07	143.76	0.50	-0.48	0.76
2,413.00	10.11	346.08	2,397.88	97.07	-129.76	154.12	0.16	-0.14	0.35
2,476.00	10.11	345.07	2,459.90	107.78	-132.51	164.46	0.28	0.00	-1.60
2,539.00	9.80	345.07	2,521.95	118.30	-135.32	174.67	0.49	-0.49	0.00
2,602.00	10.42	344.77	2,583.97	128.98	-138.20	185.06	0.99	0.98	-0.48
2,664.00	10.59	347.27	2,644.93	139.94	-140.93	195.59	0.78	0.27	4.03
2,728.00	10.59	346.79	2,707.84	151.41	-143.57	206.48	0.14	0.00	-0.75
2,791.00	10.20	346.70	2,769.81	162.47	-146.17	217.02	0.62	-0.62	-0.14
2,857.00	9.49	348.06	2,834.84	173.48	-148.64	227.44	1.13	-1.08	2.06
2,920.00	8.79	351.49	2,897.04	183.32	-150.43	236.51	1.41	-1.11	5.44
2,983.00	8.22	352.19	2,959.34	192.54	-151.75	244.81	0.92	-0.90	1.11
3,046.00	7.60	349.16	3,021.74	201.10	-153.15	252.61	1.19	-0.98	-4.81
3,109.00	6.42	344.28	3,084.27	208.58	-154.89	259.72	2.10	-1.87	-7.75
3,172.00	5.80	343.36	3,146.91	215.02	-156.75	266.06	1.00	-0.98	-1.46
3,235.00	4.79	339.10	3,209.64	220.53	-158.60	271.63	1.72	-1.60	-6.76
3,298.00	3.91	340.68	3,272.46	225.01	-160.25	276.24	1.41	-1.40	2.51
3,361.00	2.99	345.07	3,335.35	228.63	-161.39	279.85	1.52	-1.46	6.97
3,424.00	2.11	347.58	3,398.28	231.35	-162.06	282.46	1.41	-1.40	3.98
3,487.00	2.02	347.36	3,461.24	233.56	-162.55	284.56	0.14	-0.14	-0.35
3,550.00	1.89	348.19	3,524.21	235.66	-163.01	286.53	0.21	-0.21	1.32
3,613.00	1.80	350.79	3,587.17	237.66	-163.38	288.38	0.20	-0.14	4.13
3,676.00	1.71	348.68	3,650.14	239.56	-163.72	290.13	0.18	-0.14	-3.35
3,739.00	1.71	355.30	3,713.12	241.42	-163.98	291.80	0.31	0.00	10.51
3,802.00	2.50	0.19	3,776.07	243.73	-164.05	293.73	1.28	1.25	7.76
3,865.00	2.42	329.78	3,839.02	246.25	-164.72	296.17	2.05	-0.13	-48.27
3,928.00	2.42	317.96	3,901.96	248.39	-166.28	298.82	0.79	0.00	-18.76
3,991.00	1.89	324.68	3,964.92	250.22	-167.77	301.18	0.93	-0.84	10.67
4,054.00	1.71	313.78	4,027.89	251.72	-169.05	303.14	0.61	-0.29	-17.30
4,117.00	1.19	326.57	4,090.87	252.92	-170.09	304.71	0.97	-0.83	20.30
4,180.00	0.79	318.57	4,153.86	253.79	-170.74	305.80	0.67	-0.63	-12.70
4,243.00	0.62	275.38	4,216.85	254.15	-171.36	306.45	0.86	-0.27	-68.56

ARK Directional Services

Survey Report

Company:	Antero Resources	Local Co-ordinate Reference:	Well Antero Dixon B13 (111312) - Slot B13
Project:	Dixon	TVD Reference:	KB @ 5544.00ft
Site:	Dixon B	MD Reference:	KB @ 5544.00ft
Well:	Antero Dixon B13 (111312)	North Reference:	Grid
Wellbore:	Dixon B13	Survey Calculation Method:	Minimum Curvature
Design:	Dixon B13	Database:	EDM SERVER DB

Survey										
Measured Depth (ft)	Inclination (°)	Azimuth (°)	Vertical Depth (ft)	+N/-S (ft)	+E/-W (ft)	Vertical Section (ft)	Dogleg Rate (°/100ft)	Build Rate (°/100ft)	Turn Rate (°/100ft)	
4,306.00	0.22	171.80	4,279.85	254.06	-171.69	306.57	1.12	-0.63	-164.41	
4,369.00	0.40	150.40	4,342.85	253.75	-171.56	306.24	0.33	0.29	-33.97	
4,432.00	0.31	40.88	4,405.85	253.68	-171.34	306.06	0.92	-0.14	-173.84	
4,495.00	1.10	24.67	4,468.84	254.36	-170.98	306.41	1.28	1.25	-25.73	
4,558.00	1.32	31.39	4,531.83	255.53	-170.35	307.00	0.41	0.35	10.67	
4,621.00	1.10	50.86	4,594.82	256.53	-169.50	307.33	0.74	-0.35	30.90	
4,684.00	0.79	70.90	4,657.81	257.06	-168.62	307.25	0.71	-0.49	31.81	
4,747.00	0.48	103.90	4,720.80	257.14	-167.95	306.93	0.74	-0.49	52.38	
4,810.00	0.62	129.70	4,783.80	256.85	-167.43	306.40	0.45	0.22	40.95	
4,873.00	0.48	164.28	4,846.80	256.38	-167.10	305.82	0.56	-0.22	54.89	
4,936.00	0.40	334.09	4,909.80	256.33	-167.13	305.79	1.39	-0.13	269.54	
4,999.00	0.48	295.90	4,972.80	256.64	-167.46	306.24	0.47	0.13	-60.62	
5,062.00	0.40	270.10	5,035.79	256.76	-167.92	306.60	0.34	-0.13	-40.95	
5,125.00	0.70	332.29	5,098.79	257.10	-168.31	307.11	0.99	0.48	98.71	
5,188.00	0.48	350.26	5,161.79	257.70	-168.54	307.73	0.45	-0.35	28.52	
5,251.00	0.22	345.47	5,224.79	258.07	-168.61	308.08	0.41	-0.41	-7.60	
5,314.00	0.09	122.97	5,287.79	258.16	-168.60	308.14	0.46	-0.21	218.25	
5,377.00	0.48	140.38	5,350.79	257.93	-168.39	307.84	0.63	0.62	27.63	
5,440.00	0.31	153.56	5,413.79	257.58	-168.15	307.40	0.30	-0.27	20.92	
5,503.00	0.40	33.28	5,476.78	257.61	-167.95	307.32	0.98	0.14	-190.92	
5,566.00	0.40	92.70	5,539.78	257.78	-167.61	307.26	0.63	0.00	94.32	
5,629.00	0.48	20.10	5,602.78	258.02	-167.30	307.28	0.83	0.13	-115.24	
5,692.00	0.40	70.06	5,665.78	258.34	-167.00	307.37	0.60	-0.13	79.30	
5,755.00	0.62	98.10	5,728.78	258.37	-166.46	307.08	0.52	0.35	44.51	
5,818.00	0.31	293.70	5,791.78	258.39	-166.28	306.99	1.46	-0.49	-260.95	
5,881.00	0.09	226.68	5,854.78	258.43	-166.47	307.13	0.46	-0.35	-106.38	
5,944.00	0.62	159.49	5,917.78	258.07	-166.39	306.79	0.94	0.84	-106.65	
6,007.00	0.31	192.76	5,980.77	257.59	-166.30	306.35	0.63	-0.49	52.81	
6,070.00	0.79	335.10	6,043.77	257.81	-166.53	306.66	1.67	0.76	225.94	
6,133.00	0.40	334.68	6,106.77	258.41	-166.80	307.31	0.62	-0.62	-0.67	
6,196.00	0.31	213.59	6,169.77	258.46	-166.99	307.46	0.98	-0.14	-192.21	
6,259.00	0.62	170.17	6,232.77	257.99	-167.03	307.09	0.71	0.49	-68.92	
6,322.00	1.01	192.98	6,295.76	257.11	-167.09	306.41	0.79	0.62	36.21	
6,385.00	1.10	209.59	6,358.75	256.04	-167.52	305.78	0.50	0.14	26.37	
6,448.00	0.79	183.18	6,421.74	255.08	-167.84	305.19	0.84	-0.49	-41.92	
6,511.00	0.31	72.79	6,484.74	254.70	-167.70	304.79	1.50	-0.76	-175.22	
6,574.00	0.79	87.07	6,547.74	254.77	-167.10	304.51	0.79	0.76	22.67	
6,637.00	0.70	101.79	6,610.73	254.72	-166.29	304.00	0.33	-0.14	23.37	
6,700.00	0.48	127.59	6,673.73	254.48	-165.71	303.46	0.54	-0.35	40.95	
6,763.00	1.10	227.78	6,736.72	253.91	-165.95	303.14	2.02	0.98	159.03	
6,826.00	1.89	231.39	6,799.70	252.85	-167.21	303.00	1.26	1.25	5.73	
6,889.00	0.70	230.29	6,862.68	251.96	-168.31	302.91	1.89	-1.89	-1.75	
6,952.00	0.31	123.37	6,925.68	251.62	-168.47	302.72	1.34	-0.62	-169.71	

ARK Directional Services

Survey Report

Company:	Antero Resources	Local Co-ordinate Reference:	Well Antero Dixon B13 (111312) - Slot B13
Project:	Dixon	TVD Reference:	KB @ 5544.00ft
Site:	Dixon B	MD Reference:	KB @ 5544.00ft
Well:	Antero Dixon B13 (111312)	North Reference:	Grid
Wellbore:	Dixon B13	Survey Calculation Method:	Minimum Curvature
Design:	Dixon B13	Database:	EDM SERVER DB

Survey										
Measured Depth (ft)	Inclination (°)	Azimuth (°)	Vertical Depth (ft)	+N/-S (ft)	+E/-W (ft)	Vertical Section (ft)	Dogleg Rate (°/100ft)	Build Rate (°/100ft)	Turn Rate (°/100ft)	
7,015.00	0.79	67.08	6,988.68	251.70	-167.93	302.47	1.06	0.76	-89.35	
7,078.00	1.01	58.68	7,051.67	252.15	-167.05	302.34	0.41	0.35	-13.33	
7,141.00	0.79	70.90	7,114.66	252.58	-166.17	302.18	0.46	-0.35	19.40	
7,204.00	0.62	45.76	7,177.66	252.96	-165.51	302.11	0.55	-0.27	-39.90	
7,267.00	0.62	4.98	7,240.66	253.54	-165.24	302.43	0.69	0.00	-64.73	
7,330.00	0.48	359.18	7,303.65	254.15	-165.21	302.91	0.24	-0.22	-9.21	
7,393.00	0.40	353.69	7,366.65	254.63	-165.24	303.32	0.14	-0.13	-8.71	
7,460.00	0.22	330.66	7,433.65	254.97	-165.33	303.65	0.32	-0.27	-34.37	
7,505.00	0.22	330.66	7,478.65	255.12	-165.41	303.82	0.00	0.00	0.00	
Proj to TD at 7505 MD/7479 TVD - BH B13										

Survey Annotations					
Measured Depth (ft)	Vertical Depth (ft)	Local Coordinates		Comment	
		+N/-S (ft)	+E/-W (ft)		
7,505.00	7,478.65	255.12	-165.41	Proj to TD at 7505 MD/7479 TVD	

Checked By: _____ Approved By: _____ Date: _____