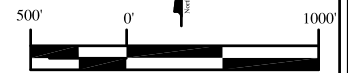
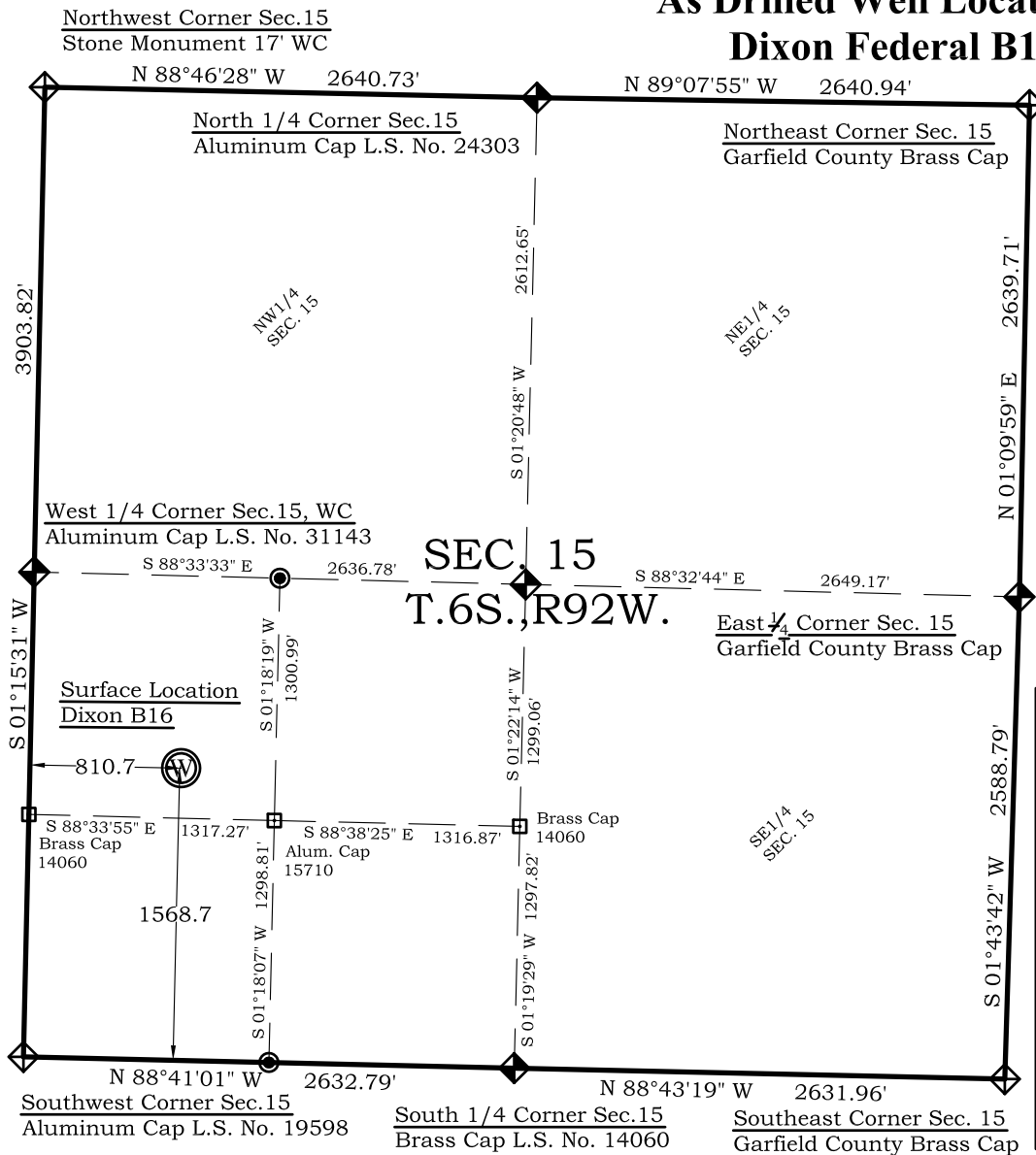


As Drilled Well Location Plat Dixon Federal B16



Graphic Scale in Feet
1"= 1000'

Legend

- ◈ - Field Surveyed Section Corner
- ◈ - Field Surveyed Quarter Corner
- ⊙ - Calculated Section Corner Location
- ◻ - Field Surveyed 1/6 Corner

Dixon B16 As Drilled Surface Location

1569' FSL
811' FWL
Gnd El= 5519.6
NAD83
Lat: 39.524084603°N
Long: 107.659591751°W
NAD27
Lat: 39.524104046°N
Long: 107.658976825°W
UTM 13 NORTH
NAD 1983
Northing
14364523.083
Easting
890398.794

Prepared For Antero Resources
As Drilled Dixon Federal B16 Well Situate in The
NW 1/4 SW 1/4 Section 15, Township 6 South, Range 92 West
of the 6 th. Principal Meridian, County of Garfield, State of
Colorado

SURVEYOR'S CERTIFICATE

I, SCOTT E. AIBNER, A REGISTERED LAND SURVEYOR, LICENSED UNDER THE LAWS OF THE STATE OF COLORADO DO HEREBY CERTIFY THAT THE SURVEY SHOWN HEREON WAS PREPARED BY RIVER VALLEY SURVEY, INC., FOR ANTERO RESOURCES, BY MEANS UNDER MY DIRECT SUPERVISION AND THAT THIS PLAT IS A TRUE REPRESENTATION THEREOF.

SCOTT E. AIBNER
PROFESSIONAL LAND SURVEYOR
No. 31143
BY: _____
SCOTT E. AIBNER, COLORADO REG. NO. 31143

Notes:

- 1.) LATITUDE AND LONGITUDE COORDINATES ARE DIFFERENTIALLY CORRECTED AND BASED ON PUBLISHED NGS CONTROL STATION "WDP-5".
- SYSTEM: UTM ZONE: 13 NORTH DATUM: NAD 1983 (CONUS)
- 2.) ELEVATIONS ARE BASED ON NAVD OF 1929.
- 3.) ALL BOTTOM AND TOP HOLE LOCATIONS ARE MEASURED 90 DEGREES FROM SECTION LINE.
- 4.) USGS QUADRANGLE MAP "SILT CO".
- 5.) CURRENT SURFACE LAND USE: OPEN RANGELAND
- 6.) PDOP AT THE TIME OF LOCATION OF SURFACE WELL = 1.4



River Valley Survey, Inc.
110 East 3rd. Street, Suite 207
Rifle, Colorado 81650
Ph: 970-379-7846

Project: Dixon B Pad

Proj. No. 06001-07

Field Date: 09-15-11

Scale: 1"= 1000'

Date: 09-29-11

Sheet: 1 of 1

**As Drilled Well Location Plat
Prepared For Antero Resources**

Situate In:
NW1/4SW1/4 Section 15, T6S., R. 92
W. of the 6th P.M., Garfield County,
Colorado

