



End of Well Report

Prepared for



Dixon B16

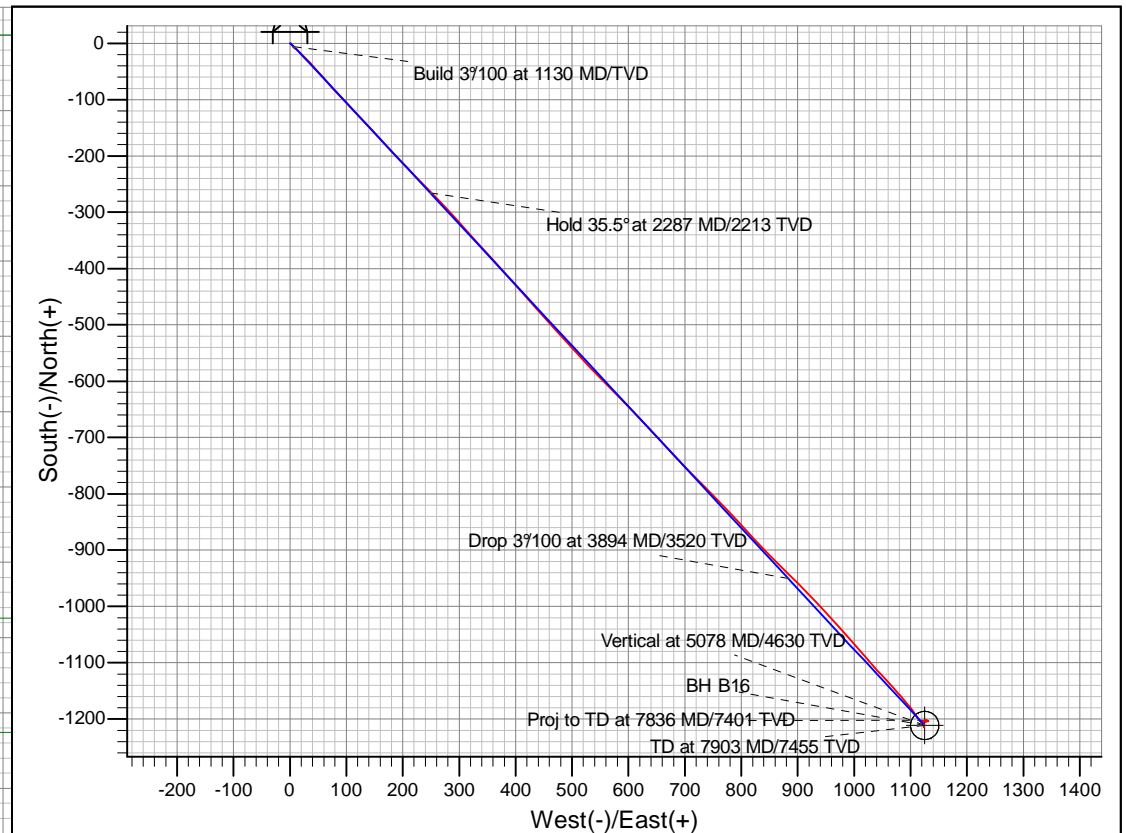
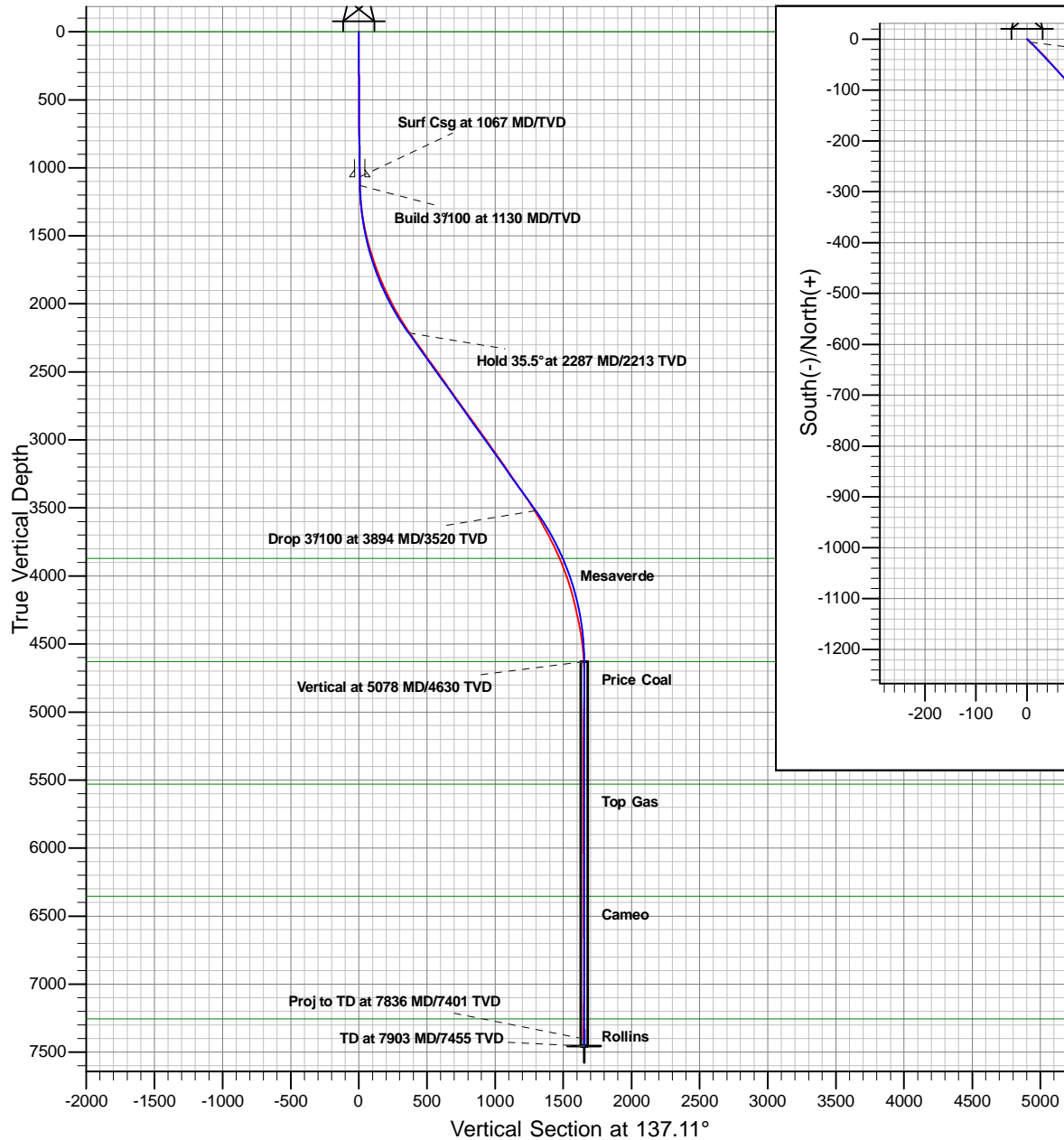
September 6, 2011

ARK Directional Services Inc
191 University Blvd, # 601
Denver, CO 80206



Antero Resources

Dixon B
Antero Dixon B16 (111315)
Planned Vs. Actual



REFERENCE INFORMATION	
Co-ordinate (N/E) Reference:	Well Antero Dixon B16 (111315) - Slot B16, Grid North
Vertical (TVD) Reference:	KB @ 5544.00ft
Section (VS) Reference:	Slot - B16(0.00N, 0.00E)
Measured Depth Reference:	KB @ 5544.00ft
Calculation Method:	Minimum Curvature

Magnetic Field Details	
Total Correction to Grid N: +11.87°	
	Model: IGRF2010
	Date: 01-Sep-11
	Grid Conv: -1.69
	Mag. Dec: 10.18°
	Field Strength: 52291
Dip: 65.82°	

PROJECT DETAILS: Dixon	
Geodetic System: Universal Transverse Mercator	
Datum: North American Datum 1983	
Ellipsoid: GRS 1980	
Zone: Zone 13N (108 W to 102 W)	
System Datum: Mean Sea Level	

Plan: Dixon B16 P02
Created By: ARK Directional Services Inc.
Date: 8:19, September 06 2011

Antero Resources

Dixon

Dixon B

Antero Dixon B16 (111315) - Slot B16

Dixon B16

Survey: B16

Survey Report - Geographic

06 September, 2011

ARK Directional Services

Survey Report - Geographic

Company:	Antero Resources	Local Co-ordinate Reference:	Well Antero Dixon B16 (111315) - Slot B16
Project:	Dixon	TVD Reference:	KB @ 5544.00ft
Site:	Dixon B	MD Reference:	KB @ 5544.00ft
Well:	Antero Dixon B16 (111315)	North Reference:	Grid
Wellbore:	Dixon B16	Survey Calculation Method:	Minimum Curvature
Design:	Dixon B16	Database:	EDM SERVER DB

Project	Dixon		
Map System:	Universal Transverse Mercator	System Datum:	Mean Sea Level
Geo Datum:	North American Datum 1983		
Map Zone:	Zone 13N (108 W to 102 W)		

Site	Dixon B				
Site Position:		Northing:	14,364,517.56 usft	Latitude:	39.524071000°N
From:	Lat/Long	Easting:	890,418.04 usft	Longitude:	107.659523000°W
Position Uncertainty:	0.00 ft	Slot Radius:	13.20 in	Grid Convergence:	-1.69 °

Well	Antero Dixon B16 (111315) - Slot B16					
Well Position	+N/-S	0.00 ft	Northing:	14,364,523.00 usft	Latitude:	39.524084364°N
	+E/-W	0.00 ft	Easting:	890,398.73 usft	Longitude:	107.659591954°W
Position Uncertainty		0.00 ft	Wellhead Elevation:	ft	Ground Level:	5,520.00 ft

Wellbore	Dixon B16				
Magnetics	Model Name	Sample Date	Declination (°)	Dip Angle (°)	Field Strength (nT)
	IGRF2010	09/01/11	10.18	65.82	52,291

Design	Dixon B16				
Audit Notes:					
Version:	1.0	Phase:	ACTUAL	Tie On Depth:	0.00
Vertical Section:	Depth From (TVD) (ft)	+N/-S (ft)	+E/-W (ft)	Direction (°)	
	0.00	0.00	0.00	133.63	

Survey Program	Date	09/06/11			
From (ft)	To (ft)	Survey (Wellbore)	Tool Name	Description	
100.00	840.00	Dixon B16 (Dixon B16)	NS-GYRO-MS	North sensing gyrocompassing m/s	
1,088.00	7,836.00	B16 (Dixon B16)	MWD	MWD - Standard	

Survey										
Measured Depth (ft)	Inclination (°)	Azimuth (°)	Vertical Depth (ft)	+N/-S (ft)	+E/-W (ft)	Map Northing (usft)	Map Easting (usft)	Latitude	Longitude	
840.00	0.82	131.11	839.98	-2.89	3.52	14,364,520.11	890,402.25	39.524076731°N	107.659579193°W	
1,088.00	0.62	164.76	1,087.96	-5.35	5.21	14,364,517.65	890,403.94	39.524070116°N	107.659572949°W	
1,151.00	1.41	144.98	1,150.95	-6.31	5.74	14,364,516.69	890,404.48	39.524067515°N	107.659570955°W	
1,246.00	5.10	127.27	1,245.79	-9.83	9.77	14,364,513.17	890,408.51	39.524058198°N	107.659556302°W	
1,340.00	8.48	134.39	1,339.11	-17.21	18.05	14,364,505.79	890,416.79	39.524038621°N	107.659526198°W	
1,434.00	10.99	134.65	1,431.75	-28.35	29.38	14,364,494.64	890,428.12	39.524008958°N	107.659484899°W	
1,529.00	13.89	138.48	1,524.51	-43.26	43.39	14,364,479.74	890,442.12	39.523969203°N	107.659433730°W	
1,623.00	17.09	138.48	1,615.09	-62.05	60.03	14,364,460.95	890,458.76	39.523918992°N	107.659372818°W	
1,718.00	19.29	137.38	1,705.34	-84.05	79.91	14,364,438.94	890,478.64	39.523860246°N	107.659300087°W	
1,812.00	21.40	136.67	1,793.47	-107.96	102.19	14,364,415.04	890,500.92	39.523796477°N	107.659218646°W	
1,907.00	24.61	137.38	1,880.90	-135.13	127.48	14,364,387.87	890,526.22	39.523723988°N	107.659126199°W	

ARK Directional Services

Survey Report - Geographic

Company:	Antero Resources	Local Co-ordinate Reference:	Well Antero Dixon B16 (111315) - Slot B16
Project:	Dixon	TVD Reference:	KB @ 5544.00ft
Site:	Dixon B	MD Reference:	KB @ 5544.00ft
Well:	Antero Dixon B16 (111315)	North Reference:	Grid
Wellbore:	Dixon B16	Survey Calculation Method:	Minimum Curvature
Design:	Dixon B16	Database:	EDM SERVER DB

Survey									
Measured Depth (ft)	Inclination (°)	Azimuth (°)	Vertical Depth (ft)	+N/-S (ft)	+E/-W (ft)	Map Northing (usft)	Map Easting (usft)	Latitude	Longitude
2,001.00	26.41	136.98	1,965.73	-164.82	155.00	14,364,358.18	890,553.74	39.523644768°N	107.659025609°W
2,096.00	29.31	137.16	2,049.71	-197.32	185.23	14,364,325.68	890,583.97	39.523558046°N	107.658915112°W
2,190.00	31.90	135.49	2,130.61	-231.91	218.30	14,364,291.09	890,617.03	39.523465834°N	107.658794372°W
2,284.00	33.88	135.88	2,209.54	-268.43	253.95	14,364,254.57	890,652.68	39.523368522°N	107.658664245°W
2,379.00	36.21	138.17	2,287.32	-308.36	291.11	14,364,214.64	890,689.84	39.523262002°N	107.658528448°W
2,474.00	35.29	137.29	2,364.42	-349.43	328.43	14,364,173.57	890,727.17	39.523152345°N	107.658391916°W
2,568.00	35.51	138.56	2,441.04	-389.85	364.92	14,364,133.15	890,763.65	39.523044419°N	107.658258439°W
2,662.00	35.42	138.26	2,517.60	-430.64	401.12	14,364,092.36	890,799.86	39.522935446°N	107.658125925°W
2,757.00	34.89	138.65	2,595.27	-471.58	437.40	14,364,051.42	890,836.13	39.522826075°N	107.657993129°W
2,851.00	35.60	137.55	2,672.04	-511.95	473.63	14,364,011.05	890,872.36	39.522718257°N	107.657860569°W
2,946.00	35.29	137.86	2,749.43	-552.70	510.70	14,363,970.30	890,909.44	39.522609463°N	107.657724972°W
3,040.00	36.61	135.36	2,825.53	-592.78	548.62	14,363,930.22	890,947.35	39.522502574°N	107.657586464°W
3,134.00	35.82	135.66	2,901.37	-632.40	587.54	14,363,890.60	890,986.27	39.522397041°N	107.657444450°W
3,229.00	35.51	137.07	2,978.55	-672.48	625.76	14,363,850.52	891,024.49	39.522290170°N	107.657304861°W
3,323.00	34.89	137.47	3,055.37	-712.28	662.53	14,363,810.72	891,061.26	39.522183958°N	107.657170454°W
3,418.00	35.11	135.75	3,133.19	-751.88	699.96	14,363,771.13	891,098.69	39.522078371°N	107.657033719°W
3,512.00	34.41	135.58	3,210.41	-790.21	737.41	14,363,732.79	891,136.15	39.521976239°N	107.656897038°W
3,607.00	34.41	135.97	3,288.79	-828.68	774.86	14,363,694.32	891,173.59	39.521873728°N	107.656760373°W
3,701.00	34.89	138.48	3,366.12	-867.91	811.14	14,363,655.09	891,209.87	39.521769049°N	107.656627742°W
3,796.00	33.62	134.87	3,444.65	-906.81	847.80	14,363,616.19	891,246.53	39.521665289°N	107.656493829°W
3,890.00	31.20	134.57	3,524.00	-942.26	883.59	14,363,580.74	891,282.32	39.521570930°N	107.656363330°W
3,985.00	29.40	135.75	3,606.02	-976.24	917.39	14,363,546.77	891,316.12	39.521480462°N	107.656240034°W
4,080.00	27.91	137.69	3,689.38	-1,009.38	948.63	14,363,513.62	891,347.36	39.521392053°N	107.656125905°W
4,174.00	26.10	138.26	3,773.13	-1,041.08	977.21	14,363,481.92	891,375.94	39.521307398°N	107.656021360°W
4,268.00	23.60	138.48	3,858.42	-1,070.61	1,003.45	14,363,452.40	891,402.18	39.521228532°N	107.655925312°W
4,363.00	21.01	139.49	3,946.31	-1,097.80	1,027.12	14,363,425.20	891,425.86	39.521155852°N	107.655838614°W
4,457.00	18.40	137.38	4,034.80	-1,121.53	1,048.12	14,363,401.47	891,446.85	39.521092442°N	107.655761759°W
4,552.00	15.29	137.47	4,125.71	-1,141.80	1,066.74	14,363,381.20	891,465.48	39.521038344°N	107.655693667°W
4,646.00	12.92	138.87	4,216.87	-1,158.85	1,082.04	14,363,364.15	891,480.77	39.520992803°N	107.655637713°W
4,741.00	12.39	139.88	4,309.56	-1,174.64	1,095.59	14,363,348.36	891,494.32	39.520950572°N	107.655588051°W
4,836.00	10.02	145.07	4,402.74	-1,189.21	1,106.89	14,363,333.79	891,505.62	39.520911510°N	107.655546494°W
4,930.00	7.21	144.76	4,495.67	-1,200.74	1,114.98	14,363,322.26	891,513.71	39.520880547°N	107.655516641°W
5,025.00	4.00	141.55	4,590.21	-1,208.21	1,120.48	14,363,314.80	891,519.21	39.520860510°N	107.655496372°W
5,119.00	2.02	154.96	4,684.08	-1,212.27	1,123.22	14,363,310.73	891,521.95	39.520849569°N	107.655486240°W
5,213.00	0.48	178.77	4,778.05	-1,214.17	1,123.93	14,363,308.83	891,522.66	39.520844428°N	107.655483528°W
5,308.00	1.89	347.96	4,873.04	-1,213.03	1,123.61	14,363,309.97	891,522.34	39.520847515°N	107.655484774°W
5,402.00	1.10	347.35	4,967.00	-1,210.64	1,123.09	14,363,312.36	891,521.82	39.520854047°N	107.655486870°W
5,497.00	1.01	338.16	5,061.99	-1,208.97	1,122.58	14,363,314.03	891,521.31	39.520858579°N	107.655488855°W
5,592.00	0.79	352.36	5,156.98	-1,207.54	1,122.18	14,363,315.46	891,520.91	39.520862460°N	107.655490416°W
5,686.00	0.62	296.15	5,250.97	-1,206.68	1,121.64	14,363,316.32	891,520.37	39.520864793°N	107.655492429°W
5,780.00	0.79	26.06	5,344.96	-1,205.87	1,121.47	14,363,317.13	891,520.20	39.520866991°N	107.655493122°W
5,876.00	0.31	26.46	5,440.96	-1,205.05	1,121.87	14,363,317.96	891,520.61	39.520869293°N	107.655491768°W
5,970.00	1.49	45.66	5,534.95	-1,203.96	1,122.86	14,363,319.04	891,521.59	39.520872341°N	107.655488384°W
6,064.00	1.01	72.47	5,628.93	-1,202.86	1,124.53	14,363,320.14	891,523.26	39.520875503°N	107.655482604°W
6,159.00	1.01	65.18	5,723.91	-1,202.26	1,126.08	14,363,320.75	891,524.82	39.520877286°N	107.655477147°W
6,253.00	0.40	167.79	5,817.91	-1,202.23	1,126.91	14,363,320.77	891,525.64	39.520877426°N	107.655474241°W
6,348.00	0.22	298.96	5,912.90	-1,202.46	1,126.82	14,363,320.54	891,525.55	39.520876772°N	107.655474533°W
6,441.00	0.40	174.69	6,005.90	-1,202.70	1,126.69	14,363,320.30	891,525.42	39.520876112°N	107.655474955°W
6,536.00	1.01	187.48	6,100.90	-1,203.86	1,126.61	14,363,319.14	891,525.34	39.520872923°N	107.655475111°W
6,630.00	0.48	209.67	6,194.89	-1,205.03	1,126.31	14,363,317.98	891,525.04	39.520869706°N	107.655476062°W
6,725.00	0.62	83.59	6,289.89	-1,205.31	1,126.62	14,363,317.69	891,525.35	39.520868940°N	107.655474920°W
6,819.00	0.22	34.37	6,383.88	-1,205.11	1,127.23	14,363,317.89	891,525.96	39.520869554°N	107.655472791°W
6,914.00	0.79	20.88	6,478.88	-1,204.35	1,127.57	14,363,318.66	891,526.30	39.520871673°N	107.655471679°W
7,009.00	0.62	82.75	6,573.87	-1,203.67	1,128.31	14,363,319.33	891,527.04	39.520873590°N	107.655469116°W
7,103.00	1.41	85.17	6,667.86	-1,203.51	1,129.97	14,363,319.49	891,528.70	39.520874167°N	107.655463264°W

ARK Directional Services

Survey Report - Geographic

Company:	Antero Resources	Local Co-ordinate Reference:	Well Antero Dixon B16 (111315) - Slot B16
Project:	Dixon	TVD Reference:	KB @ 5544.00ft
Site:	Dixon B	MD Reference:	KB @ 5544.00ft
Well:	Antero Dixon B16 (111315)	North Reference:	Grid
Wellbore:	Dixon B16	Survey Calculation Method:	Minimum Curvature
Design:	Dixon B16	Database:	EDM SERVER DB

Survey									
Measured Depth (ft)	Inclination (°)	Azimuth (°)	Vertical Depth (ft)	+N/-S (ft)	+E/-W (ft)	Map Northing (usft)	Map Easting (usft)	Latitude	Longitude
7,197.00	0.40	111.45	6,761.85	-1,203.53	1,131.42	14,363,319.47	891,530.16	39.520874223°N	107.655458098°W
7,292.00	1.10	293.38	6,856.84	-1,203.29	1,130.90	14,363,319.71	891,529.63	39.520874841°N	107.655459994°W
7,386.00	1.01	132.46	6,950.84	-1,203.49	1,130.68	14,363,319.51	891,529.41	39.520874271°N	107.655460742°W
7,481.00	0.31	263.76	7,045.83	-1,204.08	1,131.04	14,363,318.92	891,529.77	39.520872673°N	107.655459397°W
7,546.00	1.01	324.85	7,110.83	-1,203.63	1,130.54	14,363,319.37	891,529.27	39.520873865°N	107.655461231°W
7,606.00	0.79	328.06	7,170.82	-1,202.85	1,130.01	14,363,320.15	891,528.74	39.520875971°N	107.655463167°W
7,670.00	0.88	275.19	7,234.81	-1,202.43	1,129.29	14,363,320.57	891,528.02	39.520877062°N	107.655465771°W
7,732.00	1.01	288.29	7,296.80	-1,202.22	1,128.30	14,363,320.78	891,527.03	39.520877570°N	107.655469311°W
7,788.00	1.19	272.77	7,352.79	-1,202.03	1,127.25	14,363,320.97	891,525.98	39.520877987°N	107.655473048°W
7,836.00	1.19	272.77	7,400.78	-1,201.99	1,126.25	14,363,321.02	891,524.98	39.520878039°N	107.655476580°W
Proj to TD at 7836 MD/7401 TVD - BH B16									

Survey Annotations				
Measured Depth (ft)	Vertical Depth (ft)	Local Coordinates		Comment
		+N/-S (ft)	+E/-W (ft)	
7,836.00	7,400.78	-1,201.99	1,126.25	Proj to TD at 7836 MD/7401 TVD

Checked By: _____ Approved By: _____ Date: _____