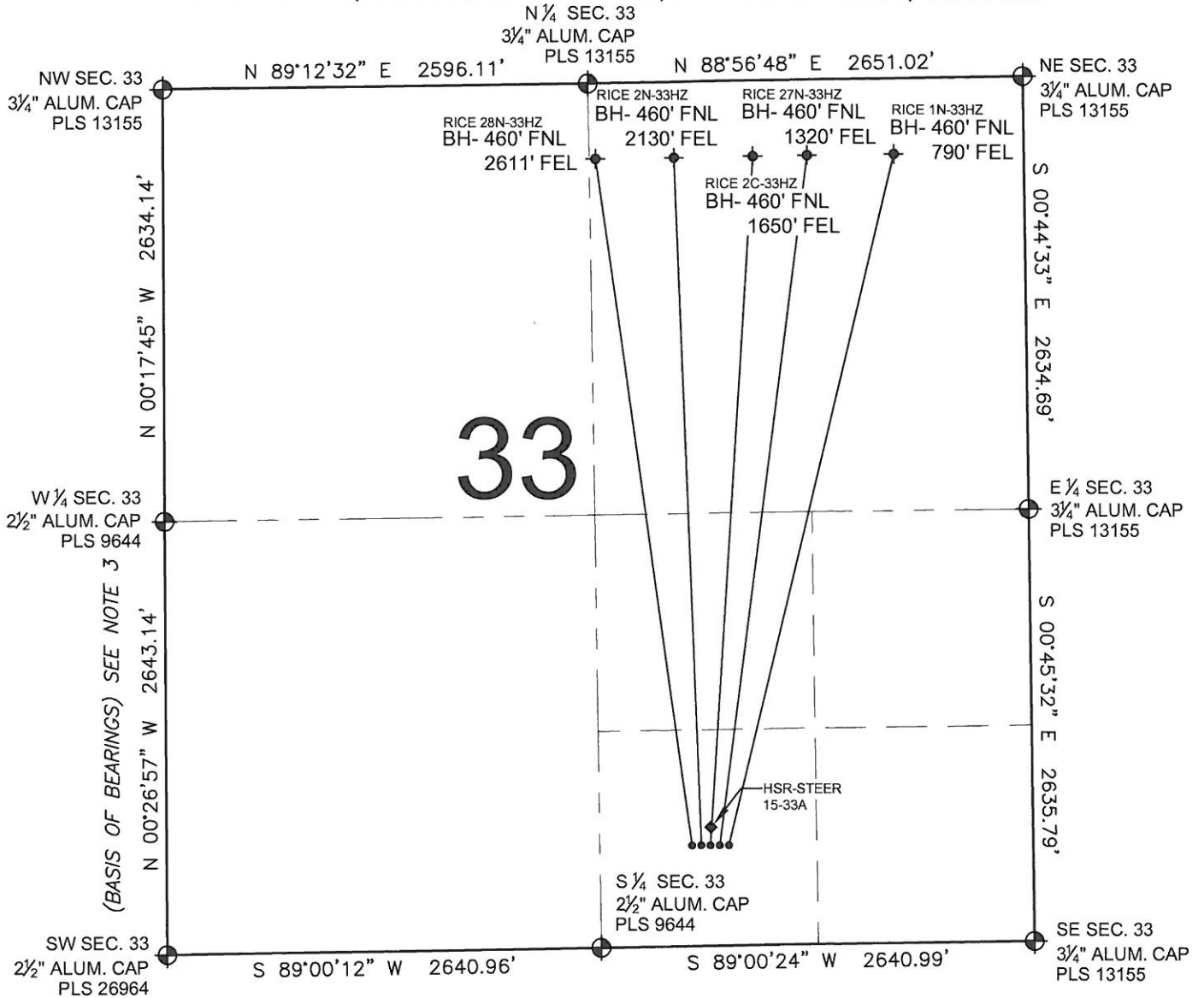


PAD DRAWING: RICE 5 PAD

SECTION 33, TOWNSHIP 3 NORTH, RANGE 66 WEST, 6TH P.M.



LEGEND

- ⊕ = EXISTING MONUMENT ◆ = BOTTOM HOLE BH= BOTTOM HOLE
- = PROPOSED WELL ◆ = EXISTING WELL

NOTES:

1. THIS FIELD SURVEY CONFORMS TO THE MINIMUM STANDARDS SET BY THE C.O.G.C.C., RULE NO. 215
2. HORIZONTAL POSITIONS AND ORTHOMETRIC ELEVATIONS SHOWN AT THE WELL HEAD, ARE BASED ON GPS-RTK POSITIONS DERIVED FROM MINIMUM 2-HOUR STATIC OBSERVATIONS CORRECTED BY THE NATIONAL GEODETIC SURVEY ONLINE POSITIONING USER SERVICE, O.P.U.S. DATUM: HORIZONTAL = NAD83/2007, VERTICAL = NAVD88
3. THE BASIS OF BEARINGS ARE STATE PLANE COORDINATE SYSTEM GRID BEARINGS SHOWN HEREON BETWEEN THE DESCRIBED THE MONUMENTS SHOWN HEREON.
4. GRID DISTANCES ARE SHOWN, AS MEASURED IN THE FIELD, WITH TIES TO WELLS MEASURED PERPENDICULAR TO SECTION LINES.

NOTES:

- RICE 28N-33HZ TO BE AT 614' FSL, 1999' FEL. BOTTOM HOLE AT 460' FNL & 2611' FEL.
- RICE 2N-33HZ TO BE AT 614' FSL, 1983' FEL. BOTTOM HOLE AT 460' FNL & 2130' FEL.
- RICE 2C-33HZ TO BE AT 614' FSL, 1967' FEL. BOTTOM HOLE AT 460' FNL & 1650' FEL.
- RICE 27N-33HZ TO BE AT 614' FSL, 1951' FEL. BOTTOM HOLE AT 460' FNL & 1320' FEL.
- RICE 1N-33HZ TO BE AT 614' FSL, 1935' FEL. BOTTOM HOLE AT 460' FNL & 790' FEL.
- HSR-STEER 15-33A IS 661' FSL, 1967' FEL.

PREPARED BY:



KERR-MCGEE OIL & GAS ONSHORE LP

FIELD DATE: 08-05-11	PAD NAME: RICE 5 PAD
DRAWING DATE: 09-27-11	SURFACE LOCATION: WELD COUNTY, COLORADO SW 1/4 SE 1/4, SEC. 33, T3N, R66W, 6TH P.M.
BY: EFW & SMF	

