

# **US ROCKIES REGION PLANNING**

**COLORADO NORTHERN ZONE - 83**

**WELD\_RICE PAD**

**RICE 2C-33HZ**

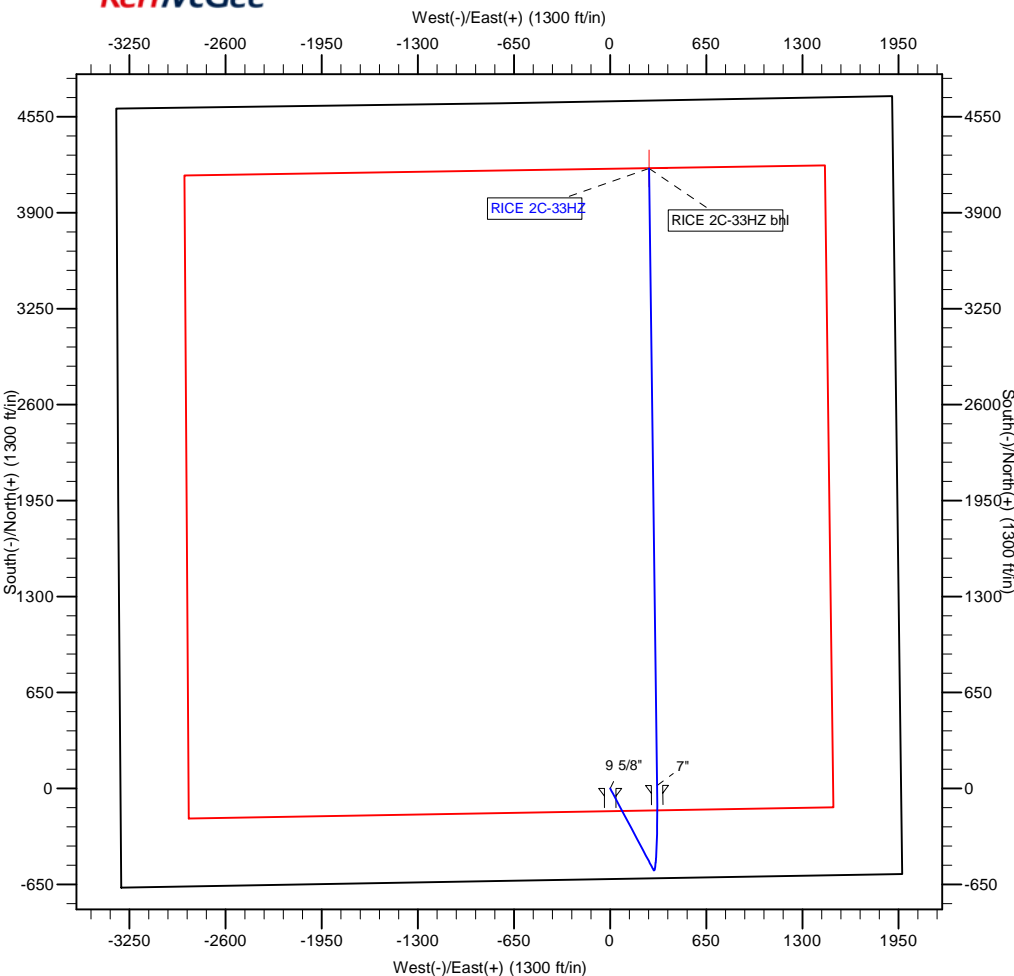
**RICE 2C-33HZ**

**Plan: RICE 2C-33HZ**

## **Standard Planning Report**

**12 September, 2011**





WELL DETAILS: RICE 2C-33HZ						
+N/-S	+E/-W	Northing	Ground Level: Easting	4941.00 Latitude	-104.779779 Longitude	Slot
0.00	0.00	1307760.55	3201249.69	40.175955	-104.779779	

WELLBORE TARGET DETAILS (MAP CO-ORDINATES AND LAT/LONG)						
Name	TVD	+N/-S	+E/-W	Latitude	Longitude	Shape
RICE 2C-33HZ bhl	7409.00	4200.28	262.04	40.187479	-104.778719	Point

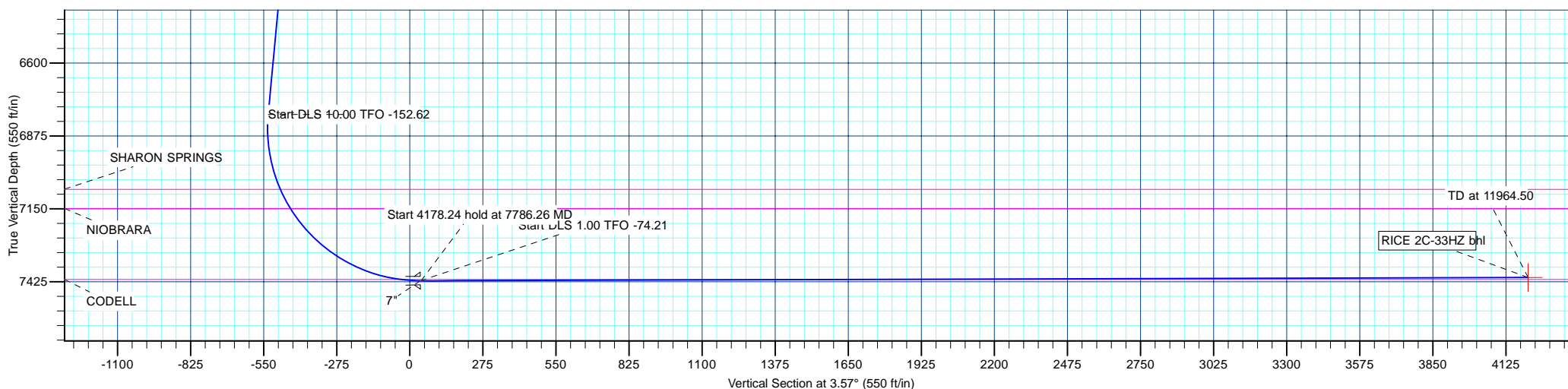
SECTION DETAILS									
MD	Inc	Azi	TVD	+N/-S	+E/-W	Dleg	TFace	Vsect	Target
0.00	0.00	0.00	0.00	0.00	0.00	0.00	0.00	0.00	
850.00	0.00	0.00	850.00	0.00	0.00	0.00	0.00	0.00	
1158.19	6.16	152.03	1157.60	-14.63	7.77	2.00	152.03	-14.12	
6827.48	6.16	152.03	6794.12	-552.27	293.22	0.00	0.00	-532.94	
7783.84	90.16	359.27	7421.00	20.00	317.00	10.00	-152.62	39.70	
7786.26	90.16	359.25	7420.99	22.42	316.97	1.00	-74.21	42.11	
11964.50	90.16	359.25	7409.00	4200.28	262.04	0.00	0.00	4208.45	RICE 2C-33HZ bhl

FORMATION TOP DETAILS			
TVDPath	MDPath	Formation	
3160.00	3172.24	PARKMAN	
4412.00	4431.52	SUSSEX	
7076.00	7116.25	SHARON SPRINGS	
7148.00	7197.56	NIOBRARA	
7416.00	7706.45	CODELL	

CASING DETAILS			
TVD	MD	Name	Size
700.00	700.00	9 5/8"	9-5/8
7421.00	7783.80	7"	7



**Weatherford®**



<b>Database:</b>	edm5000p	<b>Local Co-ordinate Reference:</b>	Well RICE 2C-33HZ
<b>Company:</b>	US ROCKIES REGION PLANNING	<b>TVD Reference:</b>	17' RKB + 4941' GL @ 4958.00ft
<b>Project:</b>	COLORADO NORTHERN ZONE - 83	<b>MD Reference:</b>	17' RKB + 4941' GL @ 4958.00ft
<b>Site:</b>	WELD_RICE PAD	<b>North Reference:</b>	Grid
<b>Well:</b>	RICE 2C-33HZ	<b>Survey Calculation Method:</b>	Minimum Curvature
<b>Wellbore:</b>	RICE 2C-33HZ		
<b>Design:</b>	RICE 2C-33HZ		

<b>Project</b>	COLORADO NORTHERN ZONE - 83		
<b>Map System:</b>	US State Plane 1983	<b>System Datum:</b>	Mean Sea Level
<b>Geo Datum:</b>	North American Datum 1983		
<b>Map Zone:</b>	Colorado Northern Zone		

<b>Site</b>	WELD_RICE PAD			
<b>Site Position:</b>		<b>Northing:</b>	1,307,760.70 ft	<b>Latitude:</b> 40.175955
<b>From:</b>	Lat/Long	<b>Easting:</b>	3,201,265.62 ft	<b>Longitude:</b> -104.779722
<b>Position Uncertainty:</b>	0.00 ft	<b>Slot Radius:</b>	0 "	<b>Grid Convergence:</b> 0.47 °

<b>Well</b>	RICE 2C-33HZ			
<b>Well Position</b>	<b>+N/-S</b>	-0.15 ft	<b>Northing:</b>	1,307,760.55 ft
	<b>+E/-W</b>	-15.93 ft	<b>Easting:</b>	3,201,249.69 ft
<b>Position Uncertainty</b>		0.00 ft	<b>Wellhead Elevation:</b>	<b>Ground Level:</b> 4,941.00 ft

<b>Wellbore</b>	RICE 2C-33HZ				
<b>Magnetics</b>	<b>Model Name</b>	<b>Sample Date</b>	<b>Declination (°)</b>	<b>Dip Angle (°)</b>	<b>Field Strength (nT)</b>
	IGRF2010	9/12/2011	8.82	66.86	52,985

<b>Design</b>	RICE 2C-33HZ			
<b>Audit Notes:</b>				
<b>Version:</b>	<b>Phase:</b>	PLAN	<b>Tie On Depth:</b>	0.00
<b>Vertical Section:</b>	<b>Depth From (TVD)</b>	<b>+N/-S</b>	<b>+E/-W</b>	<b>Direction</b>
	(ft)	(ft)	(ft)	(°)
	0.00	0.00	0.00	3.57

<b>Plan Sections</b>										
<b>Measured Depth</b>	<b>Inclination</b>	<b>Azimuth</b>	<b>Vertical Depth</b>	<b>+N/-S</b>	<b>+E/-W</b>	<b>Dogleg Rate</b>	<b>Build Rate</b>	<b>Turn Rate</b>	<b>TFO</b>	<b>Target</b>
(ft)	(°)	(°)	(ft)	(ft)	(ft)	(°/100ft)	(°/100ft)	(°/100ft)	(°)	
0.00	0.00	0.00	0.00	0.00	0.00	0.00	0.00	0.00	0.00	
850.00	0.00	0.00	850.00	0.00	0.00	0.00	0.00	0.00	0.00	
1,158.19	6.16	152.03	1,157.60	-14.63	7.77	2.00	2.00	0.00	152.03	
6,827.48	6.16	152.03	6,794.12	-552.27	293.22	0.00	0.00	0.00	0.00	
7,783.84	90.16	359.27	7,421.00	20.00	317.00	10.00	8.78	-15.97	-152.62	
7,786.26	90.16	359.25	7,420.99	22.42	316.97	1.00	0.27	-0.96	-74.21	
11,964.50	90.16	359.25	7,409.00	4,200.28	262.04	0.00	0.00	0.00	0.00	RICE 2C-33HZ bhl

<b>Database:</b>	edm5000p	<b>Local Co-ordinate Reference:</b>	Well RICE 2C-33HZ
<b>Company:</b>	US ROCKIES REGION PLANNING	<b>TVD Reference:</b>	17' RKB + 4941' GL @ 4958.00ft
<b>Project:</b>	COLORADO NORTHERN ZONE - 83	<b>MD Reference:</b>	17' RKB + 4941' GL @ 4958.00ft
<b>Site:</b>	WELD_RICE PAD	<b>North Reference:</b>	Grid
<b>Well:</b>	RICE 2C-33HZ	<b>Survey Calculation Method:</b>	Minimum Curvature
<b>Wellbore:</b>	RICE 2C-33HZ		
<b>Design:</b>	RICE 2C-33HZ		

Planned Survey									
Measured Depth (ft)	Inclination (°)	Azimuth (°)	Vertical Depth (ft)	+N/-S (ft)	+E/-W (ft)	Vertical Section (ft)	Dogleg Rate (°/100ft)	Build Rate (°/100ft)	Turn Rate (°/100ft)
0.00	0.00	0.00	0.00	0.00	0.00	0.00	0.00	0.00	0.00
100.00	0.00	0.00	100.00	0.00	0.00	0.00	0.00	0.00	0.00
200.00	0.00	0.00	200.00	0.00	0.00	0.00	0.00	0.00	0.00
300.00	0.00	0.00	300.00	0.00	0.00	0.00	0.00	0.00	0.00
400.00	0.00	0.00	400.00	0.00	0.00	0.00	0.00	0.00	0.00
500.00	0.00	0.00	500.00	0.00	0.00	0.00	0.00	0.00	0.00
600.00	0.00	0.00	600.00	0.00	0.00	0.00	0.00	0.00	0.00
700.00	0.00	0.00	700.00	0.00	0.00	0.00	0.00	0.00	0.00
9 5/8"									
800.00	0.00	0.00	800.00	0.00	0.00	0.00	0.00	0.00	0.00
850.00	0.00	0.00	850.00	0.00	0.00	0.00	0.00	0.00	0.00
Start Build 2.00									
900.00	1.00	152.03	900.00	-0.39	0.20	-0.37	2.00	2.00	0.00
1,000.00	3.00	152.03	999.93	-3.47	1.84	-3.35	2.00	2.00	0.00
1,100.00	5.00	152.03	1,099.68	-9.63	5.11	-9.29	2.00	2.00	0.00
1,158.19	6.16	152.03	1,157.60	-14.63	7.77	-14.12	2.00	2.00	0.00
Start 5669.29 hold at 1158.19 MD									
1,200.00	6.16	152.03	1,199.16	-18.59	9.87	-17.94	0.00	0.00	0.00
1,300.00	6.16	152.03	1,298.59	-28.08	14.91	-27.09	0.00	0.00	0.00
1,400.00	6.16	152.03	1,398.01	-37.56	19.94	-36.24	0.00	0.00	0.00
1,500.00	6.16	152.03	1,497.43	-47.04	24.98	-45.40	0.00	0.00	0.00
1,600.00	6.16	152.03	1,596.85	-56.53	30.01	-54.55	0.00	0.00	0.00
1,700.00	6.16	152.03	1,696.27	-66.01	35.05	-63.70	0.00	0.00	0.00
1,800.00	6.16	152.03	1,795.70	-75.49	40.08	-72.85	0.00	0.00	0.00
1,900.00	6.16	152.03	1,895.12	-84.98	45.12	-82.00	0.00	0.00	0.00
2,000.00	6.16	152.03	1,994.54	-94.46	50.15	-91.15	0.00	0.00	0.00
2,100.00	6.16	152.03	2,093.96	-103.94	55.19	-100.30	0.00	0.00	0.00
2,200.00	6.16	152.03	2,193.38	-113.43	60.22	-109.46	0.00	0.00	0.00
2,300.00	6.16	152.03	2,292.81	-122.91	65.26	-118.61	0.00	0.00	0.00
2,400.00	6.16	152.03	2,392.23	-132.39	70.29	-127.76	0.00	0.00	0.00
2,500.00	6.16	152.03	2,491.65	-141.88	75.33	-136.91	0.00	0.00	0.00
2,600.00	6.16	152.03	2,591.07	-151.36	80.36	-146.06	0.00	0.00	0.00
2,700.00	6.16	152.03	2,690.49	-160.84	85.40	-155.21	0.00	0.00	0.00
2,800.00	6.16	152.03	2,789.91	-170.33	90.43	-164.36	0.00	0.00	0.00
2,900.00	6.16	152.03	2,889.34	-179.81	95.47	-173.52	0.00	0.00	0.00
3,000.00	6.16	152.03	2,988.76	-189.29	100.50	-182.67	0.00	0.00	0.00
3,100.00	6.16	152.03	3,088.18	-198.78	105.54	-191.82	0.00	0.00	0.00
3,172.24	6.16	152.03	3,160.00	-205.63	109.18	-198.43	0.00	0.00	0.00
PARKMAN									
3,200.00	6.16	152.03	3,187.60	-208.26	110.57	-200.97	0.00	0.00	0.00
3,300.00	6.16	152.03	3,287.02	-217.74	115.61	-210.12	0.00	0.00	0.00
3,400.00	6.16	152.03	3,386.45	-227.23	120.64	-219.27	0.00	0.00	0.00
3,500.00	6.16	152.03	3,485.87	-236.71	125.68	-228.43	0.00	0.00	0.00
3,600.00	6.16	152.03	3,585.29	-246.19	130.71	-237.58	0.00	0.00	0.00
3,700.00	6.16	152.03	3,684.71	-255.68	135.75	-246.73	0.00	0.00	0.00
3,800.00	6.16	152.03	3,784.13	-265.16	140.78	-255.88	0.00	0.00	0.00
3,900.00	6.16	152.03	3,883.56	-274.64	145.82	-265.03	0.00	0.00	0.00
4,000.00	6.16	152.03	3,982.98	-284.13	150.85	-274.18	0.00	0.00	0.00
4,100.00	6.16	152.03	4,082.40	-293.61	155.89	-283.33	0.00	0.00	0.00
4,200.00	6.16	152.03	4,181.82	-303.09	160.92	-292.49	0.00	0.00	0.00
4,300.00	6.16	152.03	4,281.24	-312.58	165.96	-301.64	0.00	0.00	0.00
4,400.00	6.16	152.03	4,380.67	-322.06	170.99	-310.79	0.00	0.00	0.00
4,431.52	6.16	152.03	4,412.00	-325.05	172.58	-313.67	0.00	0.00	0.00
SUSSEX									

<b>Database:</b>	edm5000p	<b>Local Co-ordinate Reference:</b>	Well RICE 2C-33HZ
<b>Company:</b>	US ROCKIES REGION PLANNING	<b>TVD Reference:</b>	17' RKB + 4941' GL @ 4958.00ft
<b>Project:</b>	COLORADO NORTHERN ZONE - 83	<b>MD Reference:</b>	17' RKB + 4941' GL @ 4958.00ft
<b>Site:</b>	WELD_RICE PAD	<b>North Reference:</b>	Grid
<b>Well:</b>	RICE 2C-33HZ	<b>Survey Calculation Method:</b>	Minimum Curvature
<b>Wellbore:</b>	RICE 2C-33HZ		
<b>Design:</b>	RICE 2C-33HZ		

Planned Survey									
Measured Depth (ft)	Inclination (°)	Azimuth (°)	Vertical Depth (ft)	+N/-S (ft)	+E/-W (ft)	Vertical Section (ft)	Dogleg Rate (°/100ft)	Build Rate (°/100ft)	Turn Rate (°/100ft)
4,500.00	6.16	152.03	4,480.09	-331.54	176.03	-319.94	0.00	0.00	0.00
4,600.00	6.16	152.03	4,579.51	-341.03	181.06	-329.09	0.00	0.00	0.00
4,700.00	6.16	152.03	4,678.93	-350.51	186.10	-338.24	0.00	0.00	0.00
4,800.00	6.16	152.03	4,778.35	-359.99	191.13	-347.39	0.00	0.00	0.00
4,900.00	6.16	152.03	4,877.77	-369.48	196.17	-356.55	0.00	0.00	0.00
5,000.00	6.16	152.03	4,977.20	-378.96	201.20	-365.70	0.00	0.00	0.00
5,100.00	6.16	152.03	5,076.62	-388.44	206.24	-374.85	0.00	0.00	0.00
5,200.00	6.16	152.03	5,176.04	-397.93	211.27	-384.00	0.00	0.00	0.00
5,300.00	6.16	152.03	5,275.46	-407.41	216.31	-393.15	0.00	0.00	0.00
5,400.00	6.16	152.03	5,374.88	-416.89	221.34	-402.30	0.00	0.00	0.00
5,500.00	6.16	152.03	5,474.31	-426.38	226.38	-411.45	0.00	0.00	0.00
5,600.00	6.16	152.03	5,573.73	-435.86	231.41	-420.61	0.00	0.00	0.00
5,700.00	6.16	152.03	5,673.15	-445.34	236.45	-429.76	0.00	0.00	0.00
5,800.00	6.16	152.03	5,772.57	-454.83	241.49	-438.91	0.00	0.00	0.00
5,900.00	6.16	152.03	5,871.99	-464.31	246.52	-448.06	0.00	0.00	0.00
6,000.00	6.16	152.03	5,971.42	-473.79	251.56	-457.21	0.00	0.00	0.00
6,100.00	6.16	152.03	6,070.84	-483.28	256.59	-466.36	0.00	0.00	0.00
6,200.00	6.16	152.03	6,170.26	-492.76	261.63	-475.51	0.00	0.00	0.00
6,300.00	6.16	152.03	6,269.68	-502.24	266.66	-484.67	0.00	0.00	0.00
6,400.00	6.16	152.03	6,369.10	-511.73	271.70	-493.82	0.00	0.00	0.00
6,500.00	6.16	152.03	6,468.52	-521.21	276.73	-502.97	0.00	0.00	0.00
6,600.00	6.16	152.03	6,567.95	-530.69	281.77	-512.12	0.00	0.00	0.00
6,700.00	6.16	152.03	6,667.37	-540.18	286.80	-521.27	0.00	0.00	0.00
6,800.00	6.16	152.03	6,766.79	-549.66	291.84	-530.42	0.00	0.00	0.00
6,827.48	6.16	152.03	6,794.12	-552.27	293.22	-532.94	0.00	0.00	0.00
<b>Start DLS 10.00 TFO -152.62</b>									
6,900.00	3.34	57.18	6,866.46	-554.56	296.83	-535.01	10.00	-3.89	-130.80
7,000.00	12.10	12.61	6,965.51	-542.72	301.57	-522.89	10.00	8.76	-44.58
7,100.00	21.95	6.32	7,061.02	-513.84	305.93	-493.80	10.00	9.84	-6.28
7,116.25	23.56	5.79	7,076.00	-507.59	306.59	-487.52	10.00	9.92	-3.30
<b>SHARON SPRINGS</b>									
7,197.56	31.64	3.88	7,148.00	-470.08	309.68	-449.89	10.00	9.94	-2.35
<b>NIORARA</b>									
7,200.00	31.89	3.84	7,150.08	-468.80	309.77	-448.60	10.00	9.96	-1.78
7,300.00	41.85	2.44	7,229.98	-408.97	312.96	-388.69	10.00	9.97	-1.39
7,400.00	51.83	1.51	7,298.30	-336.16	315.42	-315.86	10.00	9.98	-0.94
7,500.00	61.81	0.80	7,352.95	-252.58	317.07	-232.35	10.00	9.98	-0.71
7,600.00	71.80	0.21	7,392.29	-160.79	317.86	-140.68	10.00	9.99	-0.59
7,700.00	81.78	359.69	7,415.11	-63.56	317.76	-43.65	10.00	9.99	-0.52
7,706.45	82.43	359.65	7,416.00	-57.17	317.73	-37.27	10.00	9.99	-0.50
<b>CODELL</b>									
7,783.80	90.15	359.27	7,421.00	19.96	317.00	39.66	10.00	9.99	-0.50
<b>7"</b>									
7,783.84	90.16	359.27	7,421.00	20.00	317.00	39.70	10.00	9.99	-0.49
<b>Start DLS 1.00 TFO -74.21</b>									
7,786.26	90.16	359.25	7,420.99	22.42	316.97	42.11	1.00	0.27	-0.96
<b>Start 4178.24 hold at 7786.26 MD</b>									
7,800.00	90.16	359.25	7,420.95	36.16	316.79	55.81	0.00	0.00	0.00
7,900.00	90.16	359.25	7,420.67	136.15	315.47	155.53	0.00	0.00	0.00
8,000.00	90.16	359.25	7,420.38	236.14	314.16	255.24	0.00	0.00	0.00
8,100.00	90.16	359.25	7,420.09	336.13	312.84	354.96	0.00	0.00	0.00
8,200.00	90.16	359.25	7,419.81	436.12	311.53	454.67	0.00	0.00	0.00
8,300.00	90.16	359.25	7,419.52	536.11	310.21	554.39	0.00	0.00	0.00

<b>Database:</b>	edm5000p	<b>Local Co-ordinate Reference:</b>	Well RICE 2C-33HZ
<b>Company:</b>	US ROCKIES REGION PLANNING	<b>TVD Reference:</b>	17' RKB + 4941' GL @ 4958.00ft
<b>Project:</b>	COLORADO NORTHERN ZONE - 83	<b>MD Reference:</b>	17' RKB + 4941' GL @ 4958.00ft
<b>Site:</b>	WELD_RICE PAD	<b>North Reference:</b>	Grid
<b>Well:</b>	RICE 2C-33HZ	<b>Survey Calculation Method:</b>	Minimum Curvature
<b>Wellbore:</b>	RICE 2C-33HZ		
<b>Design:</b>	RICE 2C-33HZ		

Planned Survey									
Measured Depth (ft)	Inclination (°)	Azimuth (°)	Vertical Depth (ft)	+N/-S (ft)	+E/-W (ft)	Vertical Section (ft)	Dogleg Rate (°/100ft)	Build Rate (°/100ft)	Turn Rate (°/100ft)
8,400.00	90.16	359.25	7,419.23	636.10	308.90	654.10	0.00	0.00	0.00
8,500.00	90.16	359.25	7,418.94	736.09	307.59	753.82	0.00	0.00	0.00
8,600.00	90.16	359.25	7,418.66	836.08	306.27	853.53	0.00	0.00	0.00
8,700.00	90.16	359.25	7,418.37	936.07	304.96	953.25	0.00	0.00	0.00
8,800.00	90.16	359.25	7,418.08	1,036.07	303.64	1,052.96	0.00	0.00	0.00
8,900.00	90.16	359.25	7,417.80	1,136.06	302.33	1,152.68	0.00	0.00	0.00
9,000.00	90.16	359.25	7,417.51	1,236.05	301.01	1,252.39	0.00	0.00	0.00
9,100.00	90.16	359.25	7,417.22	1,336.04	299.70	1,352.11	0.00	0.00	0.00
9,200.00	90.16	359.25	7,416.94	1,436.03	298.38	1,451.82	0.00	0.00	0.00
9,300.00	90.16	359.25	7,416.65	1,536.02	297.07	1,551.54	0.00	0.00	0.00
9,400.00	90.16	359.25	7,416.36	1,636.01	295.75	1,651.25	0.00	0.00	0.00
9,500.00	90.16	359.25	7,416.07	1,736.00	294.44	1,750.97	0.00	0.00	0.00
9,600.00	90.16	359.25	7,415.79	1,835.99	293.12	1,850.68	0.00	0.00	0.00
9,700.00	90.16	359.25	7,415.50	1,935.98	291.81	1,950.40	0.00	0.00	0.00
9,800.00	90.16	359.25	7,415.21	2,035.97	290.50	2,050.11	0.00	0.00	0.00
9,900.00	90.16	359.25	7,414.93	2,135.97	289.18	2,149.83	0.00	0.00	0.00
10,000.00	90.16	359.25	7,414.64	2,235.96	287.87	2,249.54	0.00	0.00	0.00
10,100.00	90.16	359.25	7,414.35	2,335.95	286.55	2,349.26	0.00	0.00	0.00
10,200.00	90.16	359.25	7,414.06	2,435.94	285.24	2,448.97	0.00	0.00	0.00
10,300.00	90.16	359.25	7,413.78	2,535.93	283.92	2,548.69	0.00	0.00	0.00
10,400.00	90.16	359.25	7,413.49	2,635.92	282.61	2,648.40	0.00	0.00	0.00
10,500.00	90.16	359.25	7,413.20	2,735.91	281.29	2,748.12	0.00	0.00	0.00
10,600.00	90.16	359.25	7,412.92	2,835.90	279.98	2,847.83	0.00	0.00	0.00
10,700.00	90.16	359.25	7,412.63	2,935.89	278.66	2,947.55	0.00	0.00	0.00
10,800.00	90.16	359.25	7,412.34	3,035.88	277.35	3,047.26	0.00	0.00	0.00
10,900.00	90.16	359.25	7,412.06	3,135.88	276.03	3,146.98	0.00	0.00	0.00
11,000.00	90.16	359.25	7,411.77	3,235.87	274.72	3,246.69	0.00	0.00	0.00
11,100.00	90.16	359.25	7,411.48	3,335.86	273.41	3,346.41	0.00	0.00	0.00
11,200.00	90.16	359.25	7,411.19	3,435.85	272.09	3,446.12	0.00	0.00	0.00
11,300.00	90.16	359.25	7,410.91	3,535.84	270.78	3,545.84	0.00	0.00	0.00
11,400.00	90.16	359.25	7,410.62	3,635.83	269.46	3,645.55	0.00	0.00	0.00
11,500.00	90.16	359.25	7,410.33	3,735.82	268.15	3,745.27	0.00	0.00	0.00
11,600.00	90.16	359.25	7,410.05	3,835.81	266.83	3,844.98	0.00	0.00	0.00
11,700.00	90.16	359.25	7,409.76	3,935.80	265.52	3,944.70	0.00	0.00	0.00
11,800.00	90.16	359.25	7,409.47	4,035.79	264.20	4,044.41	0.00	0.00	0.00
11,900.00	90.16	359.25	7,409.19	4,135.78	262.89	4,144.13	0.00	0.00	0.00
11,964.50	90.16	359.25	7,409.00	4,200.28	262.04	4,208.45	0.00	0.00	0.00
TD at 11964.50 - RICE 2C-33HZ bhl									

Design Targets									
Target Name	Dip Angle (°)	Dip Dir. (°)	TVD (ft)	+N/-S (ft)	+E/-W (ft)	Northing (ft)	Easting (ft)	Latitude	Longitude
RICE 2C-33HZ bhl	0.00	0.00	7,409.00	4,200.28	262.04	1,311,960.83	3,201,511.74	40.187479	-104.778719
- hit/miss target									
- Shape									
- plan hits target center									
- Point									

<b>Database:</b>	edm5000p	<b>Local Co-ordinate Reference:</b>	Well RICE 2C-33HZ
<b>Company:</b>	US ROCKIES REGION PLANNING	<b>TVD Reference:</b>	17' RKB + 4941' GL @ 4958.00ft
<b>Project:</b>	COLORADO NORTHERN ZONE - 83	<b>MD Reference:</b>	17' RKB + 4941' GL @ 4958.00ft
<b>Site:</b>	WELD_RICE PAD	<b>North Reference:</b>	Grid
<b>Well:</b>	RICE 2C-33HZ	<b>Survey Calculation Method:</b>	Minimum Curvature
<b>Wellbore:</b>	RICE 2C-33HZ		
<b>Design:</b>	RICE 2C-33HZ		

Casing Points					
Measured Depth (ft)	Vertical Depth (ft)	Name	Casing Diameter (")	Hole Diameter (")	
700.00	700.00	9 5/8"	9-5/8	12-1/4	
7,783.80	7,421.00	7"	7	8-3/4	

Formations					
Measured Depth (ft)	Vertical Depth (ft)	Name	Lithology	Dip (°)	Dip Direction (°)
3,172.24	3,160.00	PARKMAN		0.00	
4,431.52	4,412.00	SUSSEX		0.00	
7,116.25	7,076.00	SHARON SPRINGS		0.00	
7,197.56	7,148.00	NIOBRARA		0.00	
7,706.45	7,416.00	CODELL		0.00	

Plan Annotations					
Measured Depth (ft)	Vertical Depth (ft)	Local Coordinates			
		+N/-S (ft)	+E/-W (ft)	Comment	
850.00	850.00	0.00	0.00	Start Build 2.00	
1,158.19	1,157.60	-14.63	7.77	Start 5669.29 hold at 1158.19 MD	
6,827.48	6,794.12	-552.27	293.22	Start DLS 10.00 TFO -152.62	
7,783.84	7,421.00	20.00	317.00	Start DLS 1.00 TFO -74.21	
7,786.26	7,420.99	22.42	316.97	Start 4178.24 hold at 7786.26 MD	
11,964.50	7,409.00	4,200.28	262.04	TD at 11964.50	