

**T5N, R62W, 6th. P.M.**

2008 Alum. Cap,  
Fence Corner, Flush  
W/Ground, Jones  
LS #22098,  
King Surveyors, Inc.  
Lat: 40.392647°  
Long: 104.299611°

**EOG RESOURCES, INC.**

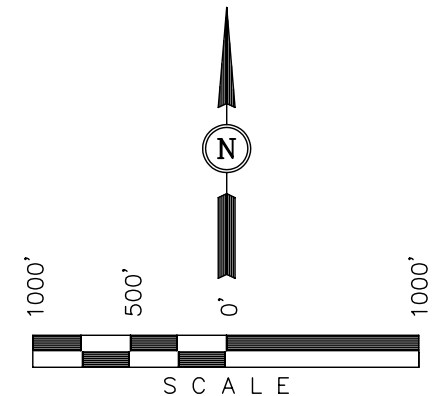
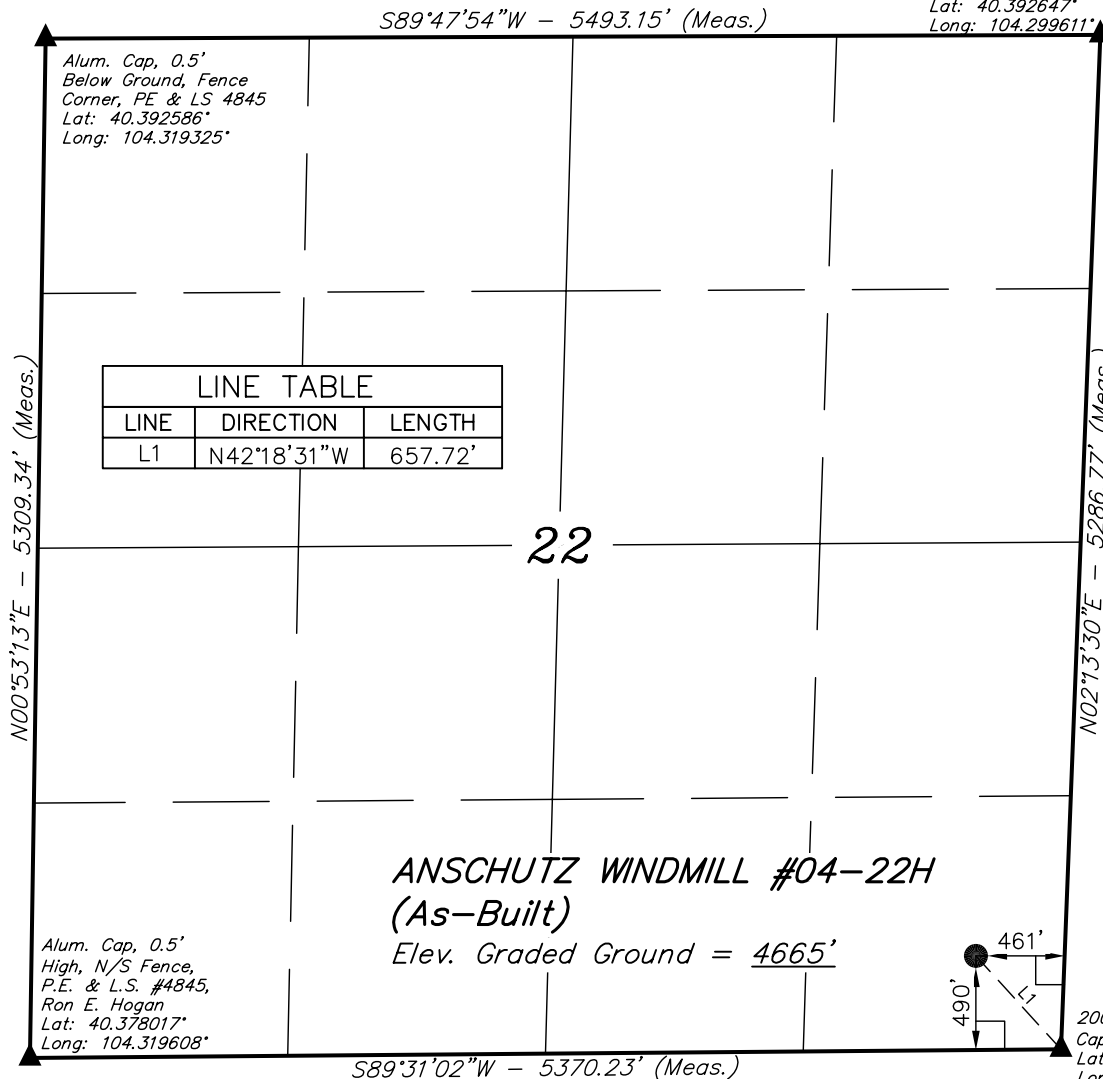
Well location, ANSCHUTZ WINDMILL #04-22H  
(As-Built), located as shown in the SE 1/4 SE  
1/4 of Section 22, T5N, R62W, 6th. P.M., Weld  
County, Colorado.

**BASIS OF ELEVATION**

SPOT ELEVATION LOCATED AT THE NORTHWEST CORNER OF  
SECTION 19, T5N, R61W, 6th. P.M. TAKEN FROM THE POINT  
OF ROCKS, QUADRANGLE, COLORADO, WELD COUNTY, 7.5  
MINUTE QUAD (TOPOGRAPHIC MAP) PUBLISHED BY THE UNITED  
STATES DEPARTMENT OF THE INTERIOR, GEOLOGICAL SURVEY.  
SAID ELEVATION IS MARKED AS BEING 4530 FEET.

**BASIS OF BEARINGS**

BASIS OF BEARINGS IS A G.P.S. OBSERVATION.



**CERTIFICATE**

THIS IS TO CERTIFY THAT THE ABOVE PLAT WAS PREPARED FROM  
FIELD NOTES OF ACTUAL SURVEYS MADE BY ME OR UNDER MY  
SUPERVISION AND THAT THE SAME ARE TRUE AND CORRECT TO THE  
BEST OF MY KNOWLEDGE AND BELIEF.

REGISTERED LAND SURVEYOR  
REGISTRATION NO. 17492  
STATE OF COLORADO

REV.: 10-18-11

**LEGEND:**

- └─┘ = 90° SYMBOL
- = PROPOSED WELL HEAD.
- ▲ = SECTION CORNERS LOCATED.

PDOP = 1.3

NAD 83 (SURFACE LOCATION)	
LATITUDE	= 40°22'46.14" (40.379483)
LONGITUDE	= 104°18'06.94" (104.301928)
NAD 27 (SURFACE LOCATION)	
LATITUDE	= 40°22'46.21" (40.379503)
LONGITUDE	= 104°18'05.11" (104.301419)
STATE PLANE NAD 83 COLORADO NORTH	
N: 1383341.02	E: 3333766.35
STATE PLANE NAD 27 COLORADO NORTH	
N: 383342.80	E: 2333916.35

<b>UINTAH ENGINEERING &amp; LAND SURVEYING</b> <b>85 SOUTH 200 EAST - VERNAL, UTAH 84078</b> <b>(435) 789-1017</b>			
SCALE 1" = 1000'		DATE SURVEYED: 10-12-11	DATE DRAWN: 10-14-11
PARTY J.H. K.H. J.I.		REFERENCES G.L.O. PLAT	
WEATHER WARM		FILE EOG RESOURCES, INC.	