

OPERATOR: WIEPKING - FULLERTON ENERGY LLC

TEST NO: 1

WELL NAME: KERRY 3

TICKET NO: 2882

Contractor Murfin Drilling  
Rig No. 25  
Spot SE/SW  
Sec 20  
Twp 10 S  
Rng 55 W  
Field Great Plains  
County Lincoln  
State Colorado  
Elevation 5213' KB - 5201' GL  
Formation Torch

Surface Choke 1"  
Bottom Choke 5/8"  
Hole Size 7 7/8"  
Core Hole Size  
DP Size & Wt 4 1/2" 16.60  
Wt Pipe  
ID of DC 2 3/8"  
Length of DC 540'  
Total Depth 6980'  
Type of Test Open Hole Dst  
Interval 6940' - 6980'

Mud Type Chemical/Gel  
Weight 9.2  
Viscosity 74  
Water Loss 8.0  
Filter Cake  
RW 2.0 @ 74 Deg F  
Chlorides 2,649 Ppm  
Co. Rep. Gregg Smith  
Tester Mark Green

## Pipe Recovery:

## Properties:

Reverse circulated:  
Highly gas cut mud with trace of oil

## Surface blow:

1st Flow: Began with a 1/4" blow, slowly increased to 5" at 30 minutes.  
2nd Flow: Began with a bottom of bucket blow, increased to 12.0 oz at 1 minute; decreased to 7.0 oz at 15 minutes and remained thru flow period.

## Remarks:

The tools became stuck while tripping out when the rig broke down approximately 1500 feet off bottom and had to be fished. Tools were recovered on 9/10/2011. The increase in flow pressures indicate approximately 52 feet of drilling fluid recovery in the string at the end of the test.

Pressure data file



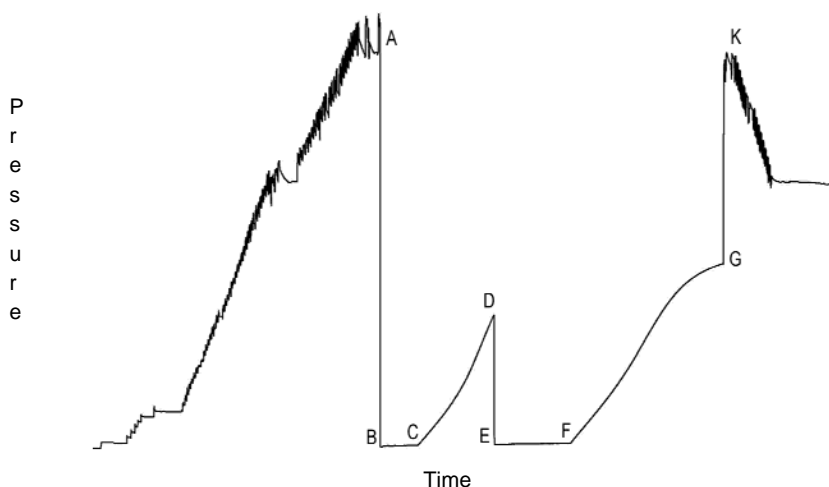
## Downhole Sampler:

Pressure in Sampler 0 psig  
Volume of Sampler 2200 cc  
Volume of Sample 2200 cc  
Oil: 0 cc  
Water: 0 cc  
Mud: 2200 cc  
Gas: Gas Odor cu ft  
Other: 0  
Rw: 3.0 @ 82 deg F/1.48@ res temp  
Chlorides: 1,565 ppm NaCl., 952 ppm Cl.  
Gas/Oil Ratio  
Gravity API @ 60 Deg F

Opened Tool @ 12:33 hrs on 09/05/2011

	Reported	Corrected	
Flow 1	30	29	min
Shut-in 1	60	61	min
Flow 2	60	59	min
Shut-in 2	120	119	min

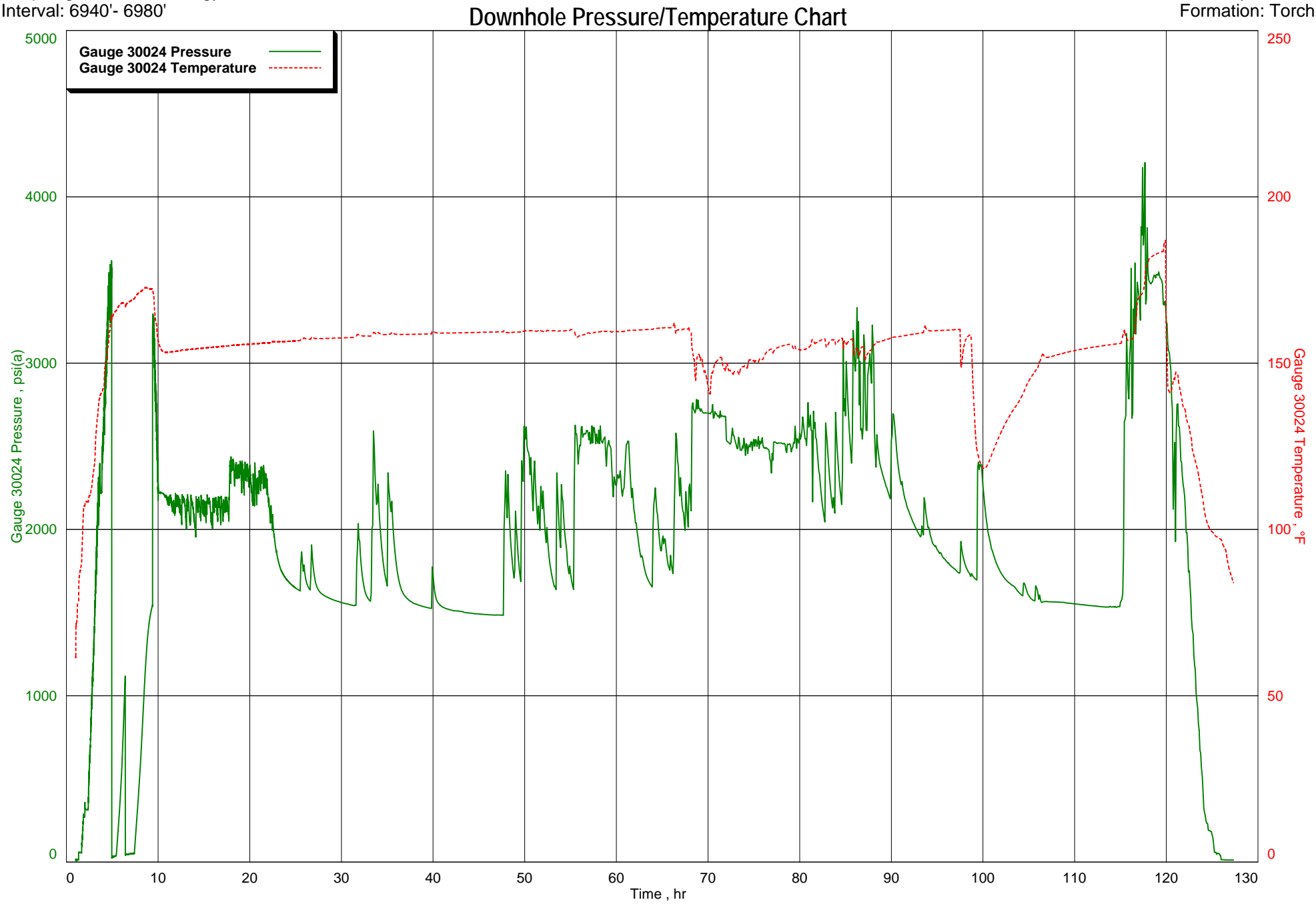
Downhole Pressure Chart



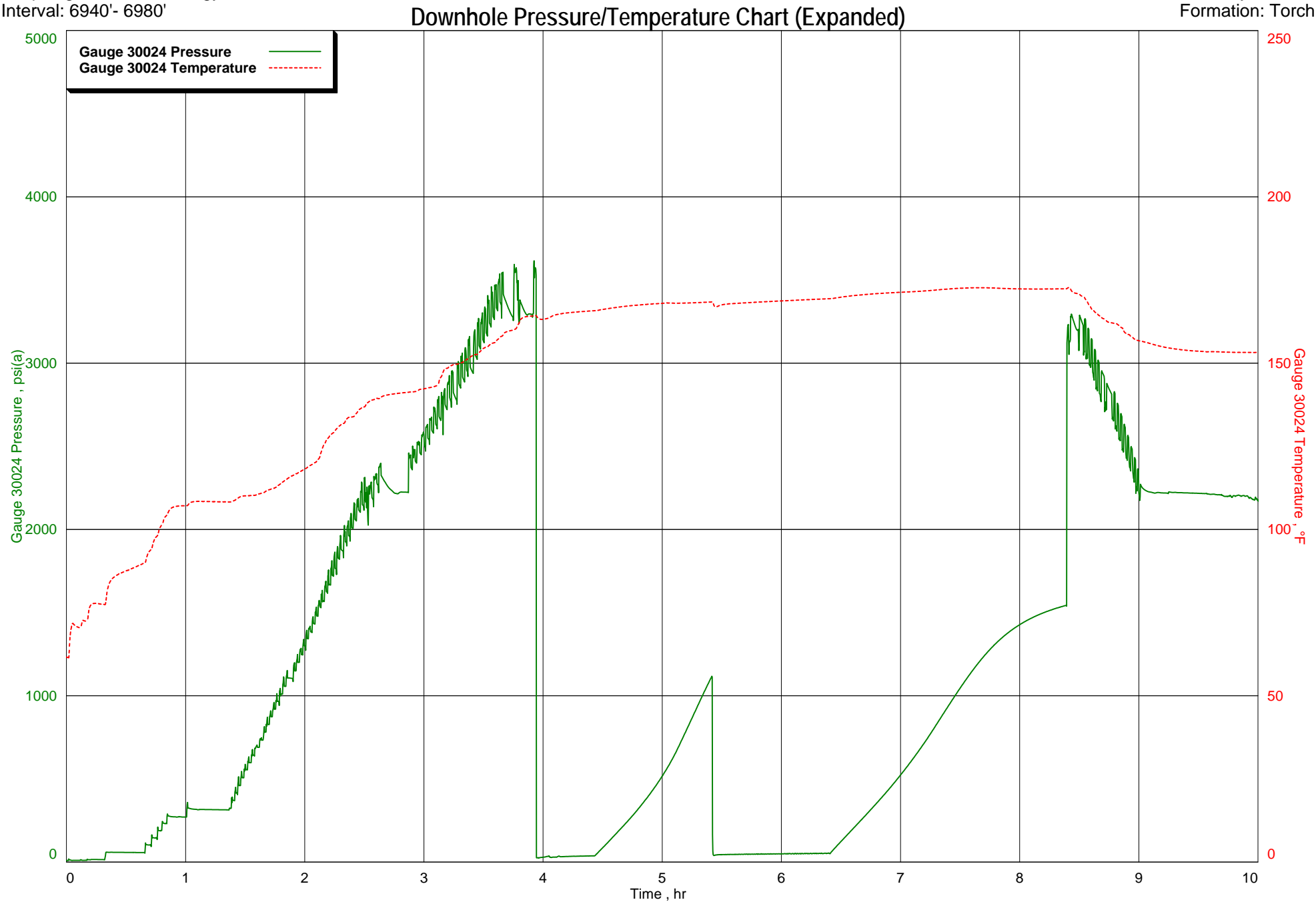
Downhole Pressure Data

Recorder Type JMCO Memory Recorder  
No. 30024 Cap 10000 psi  
Depth 6915 ft.  
Inside x Outside  
Psi(a) Deg (f)  
Initial Hydrostatic [A] 3295  
Final Hydrostatic [K] 3203  
Initial Flow 1 [B] 25 164  
Final Flow 1 [C] 37 166  
Initial Flow 2 [E] 39 168  
Final Flow 2 [F] 50 169  
Shut-in 1 [D] 1117 168  
Shut-in 2 [G] 1544 172  
Maximum Temperature 173



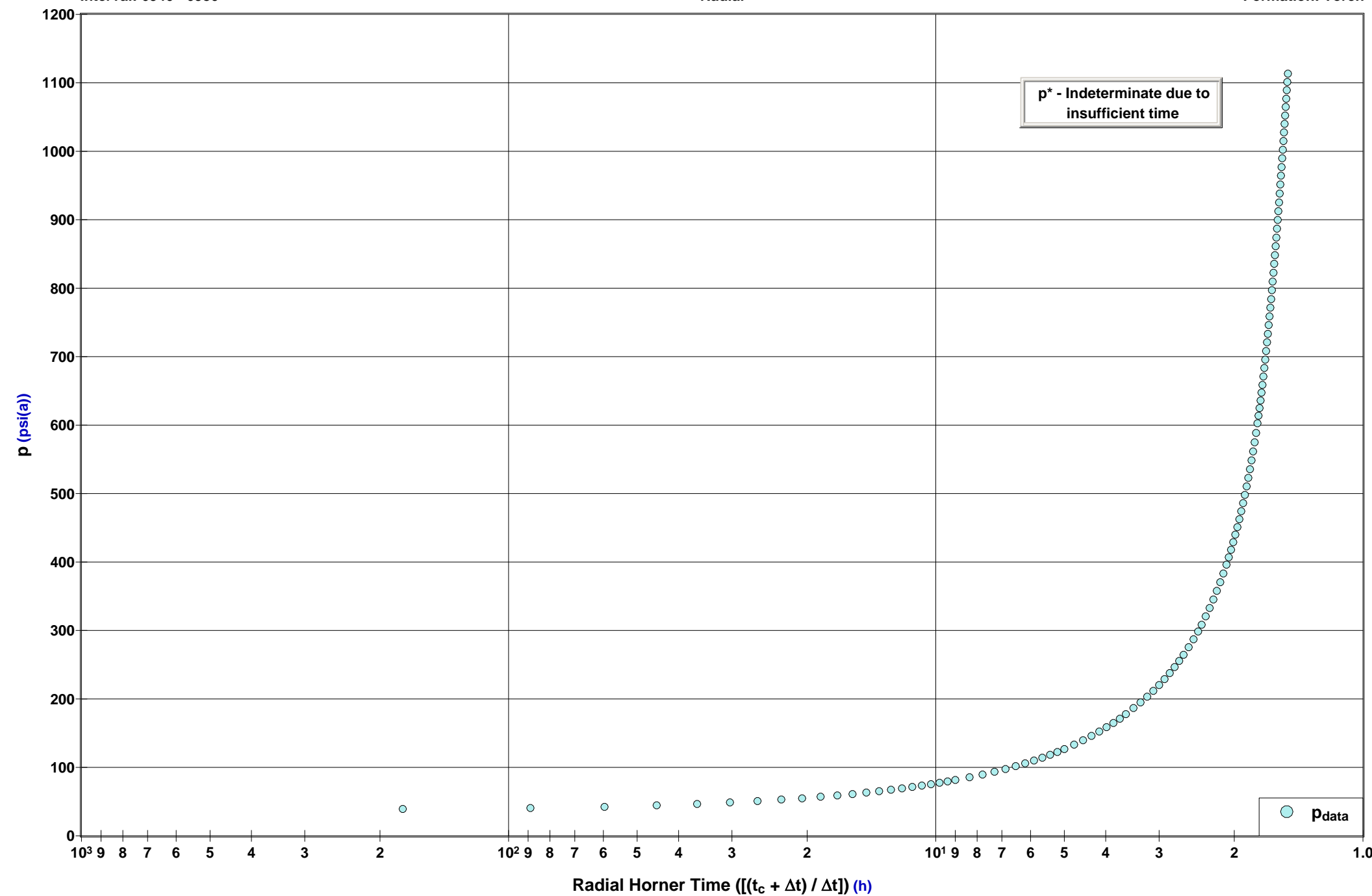








**Kerry 3, Dst 1**  
**Formation: Torch**



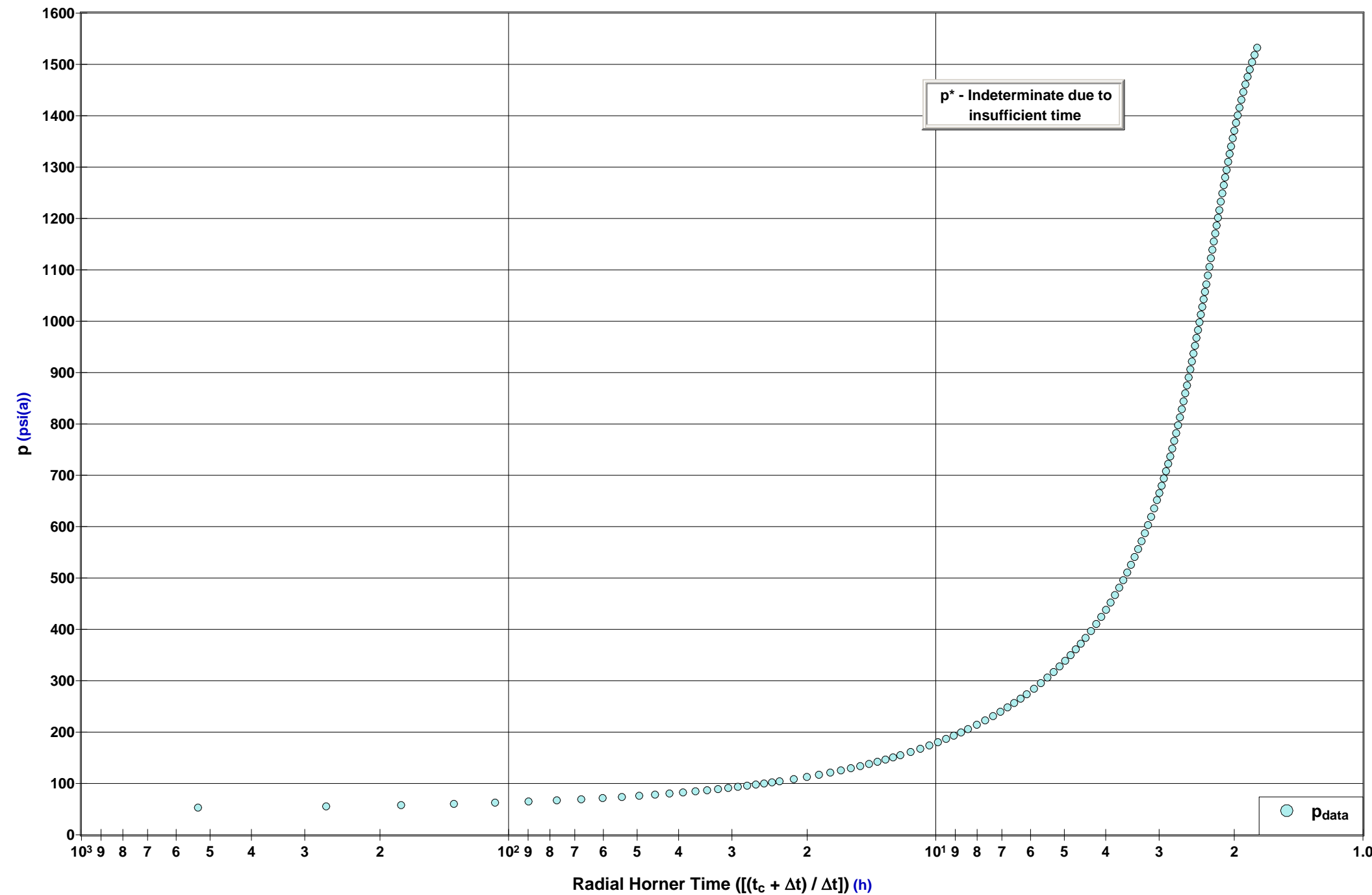


Wiepking - Fullerton Energy LLC  
Interval: 6940' - 6980'

## Diagnostic Plot - Shut In 2

Radial

Kerry 3, Dst 1  
Formation: Torch





Wiepking - Fullerton Energy LLC  
Interval: 6940' - 6980'

## Diagnostic Plot - Shut In 2

Typecurve

Kerry 3, Dst 1  
Formation: Torch

