

QUICKSILVER RESOURCES INC-EBUSINESS
DO NOT MAIL - 801 CHERRY ST
FORT WORTH, Texas

Stoddard 33-30

DHS 6

Post Job Summary **Cement Surface Casing**

Prepared for: Ryan Hord
Date Prepared: August 3, 2011
Version: 1

Service Supervisor: FUCHS, BENJAMIN

Submitted by: Joshua Anglin

HALLIBURTON

HALLIBURTON

Wellbore Geometry

Job Tubulars					MD		TVD		Excess	Shoe Joint Length
Type	Description	Size in	ID in	Wt lbm/ft	Top ft	Bottom ft	Top ft	Bottom ft	%	ft
Open Hole Section	Surface Open Hole		12.250		0.00	1,200.00				0.00
Casing	Surface Casing	9.63	8.921	36.00	0.00	1,200.00				40.00

Pumping Schedule

Stage /Plug #	Fluid #	Fluid Type	Fluid Name	Surface Density lbm/gal	Avg Rate bbl/min	Surface Volume	Downhole Volume
1	1	Spacer	SUPER FLUSH 101	10.00	0.00		.0
1	2	Cement Slurry	VariCem V1	12.30			.0
1	3	Cement Slurry	VariCem V1	13.50			.0
1	4	Spacer	Water Based Mud	8.40	0.00		.0
1	5	Cement Slurry	HalCem Top Out	15.80			.0

HALLIBURTON

Fluids Pumped

Stage/Plug # 1 Fluid 1: SUPER FLUSH 101
SUPER FLUSH 101 - SBM (12199)

Fluid Density: 10.00 lbm/gal
Pump Rate: 0.00 bbl/min

Stage/Plug # 1 Fluid 2: VariCem V1
VARICEM (TM) CEMENT
0.125 lbm Poly-E-Flake

Fluid Weight: 12.30 lbm/gal
Slurry Yield: 2.24 ft³/sack
Total Mixing Fluid: 12.95 Gal
Calculated Fill: 700.00 ft
Calculated Top of Fluid: 0.00 ft
Estimated Top of Fluid:

Stage/Plug # 1 Fluid 3: VariCem V1
VARICEM (TM) CEMENT
0.125 lbm Poly-E-Flake

Fluid Weight: 13.50 lbm/gal
Slurry Yield: 1.72 ft³/sack
Total Mixing Fluid: 9.07 Gal
Calculated Fill: 500.00 ft
Calculated Top of Fluid: 700.00 ft
Estimated Top of Fluid:

Stage/Plug # 1 Fluid 4: Water Based Mud
DUMMY MUD / FLUSH / SPACER SBC MATERIAL

Fluid Density: 8.40 lbm/gal
Pump Rate: 0.00 bbl/min

Stage/Plug # 1 Fluid 5: HalCem Top Out
HALCEM (TM) SYSTEM
2 % Calcium Chloride

Fluid Weight: 15.80 lbm/gal
Slurry Yield: 1.20 ft³/sack
Total Mixing Fluid: 5.26 Gal
Estimated Top of Fluid:

HALLIBURTON

Job Summary

Job Information

Job Start Date	7/26/2011 9:20:00 PM
Job MD	1,200.0 ft
Job TVD	1,239.0 ft
Height of Plug Container/Swage Above Rig Floor	5.0 ft
Mud Type	LSND
Actual Mud Density	9 lbm/gal
Time Circulated before job	1.00 hour(s)
Rate at Which Well was Circulated	6.000 bbl/min
Time From End Mud Circ. to Job Start	60.00 minute
Calculated Displacement	93.40 bbl
Amount of Cement Returns	30.00 bbl
Length of Rat Hole	10.00 ft

Cementing Equipment

Did Float Equipment Hold?	Yes
Brand of Plug set used?	HALLIBURTON

HALLIBURTON

Service Supervisor Reports

Job Log

Date/Time	Chart #	Activity Code	Pump Rate	Cum Vol	Pump		Pressure (psig)		Comments
07/26/2011 08:00		Call Out							CREW CALLED FOR SERVICES
07/26/2011 10:45		Depart Yard Safety Meeting							DICUSS ALL ROUTES AND OVER THE ROAD HAZARDS
07/26/2011 11:00		Crew Leave Yard							DEPART FOR LOCATION
07/26/2011 14:00		Arrive at Location from Service Center							RIG RUNNING CASEING UPON ARRIVAL
07/26/2011 14:10		Other							WAIT OFF LOCATION PER COMPANY MAN REQUEST
07/26/2011 16:30		Other							BRING TRUCKS BACK ON LOCATION
07/26/2011 17:00		Assessment Of Location Safety Meeting							ASSESS ALL POSSIBLE HAZARDS ON LOCATION
07/26/2011 17:15		Pre-Rig Up Safety Meeting							DISCUSS ALL RIG UP PROCEDURES AND HAZARDS OF LOCATION IN WORK AREA
07/26/2011 17:30		Rig-Up Equipment							RIG UP

HALLIBURTON

Date/Time	Char t #	Activity Code	Pump Rate	Cum Vol	Pump		Pressure (psig)		Comments
07/26/2011 20:30		Pre-Job Safety Meeting							INCLUDE ALL PERSONEL ON LOCATION FOR PRE JOB JOB SAFETY MEETING. DISCUSS ALL SAFETY ISSUES AND JOB PROCEDURES WITH ALL PERSONEL
07/26/2011 20:45		Other							RIG HYDRAULIC HOSE BROKE FOR TUGGER LINE WAIT FOR THEM TO FIX IT
07/26/2011 21:22	1	Start Job							FILL LINES FOR PRESSURE TEST
07/26/2011 21:24	2	Test Lines							TEST LINES TO 3000 PSI
07/26/2011 21:29	3	Pump Spacer	5					100.0	PUMP 20 BBLS OF FRESH WATER SPACER
07/26/2011 21:31	4	Pump Spacer	5					130.0	PUMP 20 BBLS SUPERFLUSH SPACER
07/26/2011 21:36	5	Pump Spacer	5					86.0	PUMP 20 BBLS FRESH WATER SPACER
07/26/2011 21:43	6	Pump Lead Cement	5					126.0	PUMP 79.8 BBLS LEAD CEMENT MIXED AT 12.3 PPG 200 SKS 2.24 YIELD 12.95 GAL/SK
07/26/2011 21:59	7	Pump Tail Cement	5					145.0	PUMP 59.7 BBLS TAIL CEMENT MIXED AT 13.5 PPG 195 SKS 1.72 YIELD 9.07 GAL/SK
07/26/2011 22:11	8	Shutdown							TAIL CEMENT AWAY
07/26/2011 22:13	9	Drop Top Plug							DROP PLUG

HALLIBURTON

Date/Time	Chart #	Activity Code	Pump Rate	Cum Vol	Pump		Pressure (psig)		Comments
07/26/2011 22:14	10	Pump Displacement	5					330.0	PUMP 92.4 BBLS OF FRESH WATER
07/26/2011 22:31	11	Slow Rate	3						FOR PRESSURE
07/26/2011 22:38	12	Slow Rate	2						FOR PRESSURE
07/26/2011 22:42	13	Slow Rate	1.8						TO LAND PLUG
07/26/2011 22:43	14	Bump Plug						600.0	LAND PLUG WITH 500 PSI OVER FINAL CIRCULATING PRESSURE
07/26/2011 22:45	15	Check Floats							FLOATS HELD 1.5 BBLS BACK
07/26/2011 22:45		Shutdown							PRIMARY JOB COMPLETE
07/26/2011 22:50		Pre-Rig Down Safety Meeting							DISCUSS ALL HAZARDS ASSOCIATED WITH RIGGING DOWN EQUIPMENT
07/26/2011 23:00		Rig-Down Equipment							RIG DOWN
07/27/2011 00:15		Pre-Convoy Safety Meeting							DISCUSS ALL OVER THE ROAD HAZARDS AND ROUTES TO NEXT DESTINATION
07/27/2011 00:30		Crew Leave Location							THANK YOU FOR YOUR BUSINESS

The Road to Excellence Starts with Safety

Sold To #: 346707	Ship To #: 346707	Quote #:	Sales Order #: 8344282
Customer: QUICKSILVER RESOURCES INC-EBUSINESS		Customer Rep:	
Well Name: Stoddard		Well #: 33-30	API/UWI #:
Field:	City (SAP): FORT WORTH	County/Parish: Moffat	State: Colorado
Contractor: DHS		Rig/Platform Name/Num: 6	
Job Purpose: Cement Surface Casing			
Well Type: Exploratory / Wildcat		Job Type: Cement Surface Casing	
Sales Person: SCOTT, KYLE		Srvc Supervisor: FUCHS, BENJAMIN	MBU ID Emp #: 470584

Job Personnel

HES Emp Name	Exp Hrs	Emp #	HES Emp Name	Exp Hrs	Emp #	HES Emp Name	Exp Hrs	Emp #
ESTEP, KENNETH		121420	FUCHS, BENJAMIN Reinhard		470584	HERNANDEZ, AARON		489820
LAWTON, SCOTT O		482816	PORTER, MIKE		491145	VOORHIS, WALTER T		472268

Equipment

HES Unit #	Distance-1 way	HES Unit #	Distance-1 way	HES Unit #	Distance-1 way	HES Unit #	Distance-1 way
10948686	80 mile	10991611	80 mile	10994447	80 mile	11024385	80 mile
11041164	80 mile	11056349	80 mile	11263210	80 mile	11360879	80 mile
11512092	80 mile						

Job Hours

Date	On Location Hours	Operating Hours	Date	On Location Hours	Operating Hours	Date	On Location Hours	Operating Hours

TOTAL	Total is the sum of each column separately							
--------------	--	--	--	--	--	--	--	--

Job

Formation Name	Formation Depth (MD)	Top	Bottom	Form Type	Job depth MD	Job Depth TVD	Water Depth	Perforation Depth (MD)	From	To
				BHST	1200. ft	1239. ft				
							Wk Ht Above Floor			
						5. ft				

Job Times

Date	Time	Time Zone
26 - Jul - 2011	08:00	MST
26 - Jul - 2011	14:00	MST
26 - Jul - 2011	21:20	MST
26 - Jul - 2011	22:45	MST
27 - Jul - 2011	00:30	MST

Well Data

Description	New / Used	Max pressure psig	Size in	ID in	Weight lbm/ft	Thread	Grade	Top MD ft	Bottom MD ft	Top TVD ft	Bottom TVD ft
Surface Open Hole				12.25				.	1200.		
Surface Casing	Unknown		9.625	8.921	36.		J-55	.	1200.		

Sales/Rental/3rd Party (HES)

Description	Qty	Qty uom	Depth	Supplier
MILEAGE FOR CEMENTING CREW,ZI	160	MI		
ZI FUEL SURCHG-CARS/PICKUPS<1 1/2TON	160	MI		
PLUG,CMTG,TOP,9 5/8,HWE,8.16 MIN/9.06 MA	1	EA		
TUF FIBER 594	30	LB		

Tools and Accessories

Summit
Version:

Wednesday, August 03, 2011 17:32:00

Type	Size	Qty	Make	Depth	Type	Size	Qty	Make	Depth	Type	Size	Qty	Make			
Guide Shoe					Packer					Top Plug						
Float Shoe					Bridge Plug					Bottom Plug						
Float Collar					Retainer					SSR plug set						
Insert Float										Plug Container						
Stage Tool										Centralizers						
Miscellaneous Materials																
Gelling Agt			Conc		Surfactant			Conc		Acid Type		Qty	Conc %			
Treatment Fld			Conc		Inhibitor			Conc		Sand Type		Size	Qty			
Fluid Data																
Stage/Plug #: 1																
Fluid #	Stage Type	Fluid Name			Qty	Qty uom	Mixing Density lbm/gal	Yield ft3/sk	Mix Fluid Gal/sk	Rate bbl/min	Total Mix Fluid Gal/sk					
1	SUPER FLUSH 101	SUPER FLUSH 101 - SBM (12199)				bbl	10.	.0	.0	.0						
2	VariCem V1	VARICEM (TM) CEMENT (452009)				sacks	12.3	2.24	12.95		12.95					
	0.125 lbm	POLY-E-FLAKE (101216940)														
	12.954 Gal	FRESH WATER														
3	VariCem V1	VARICEM (TM) CEMENT (452009)				sacks	13.5	1.72	9.07		9.07					
	0.125 lbm	POLY-E-FLAKE (101216940)														
	9.065 Gal	FRESH WATER														
4	Water Based Mud					bbl	8.4	.0	.0	.0						
5	HalCem Top Out	HALCEM (TM) SYSTEM (452986)				sacks	15.8	1.2	5.26		5.26					
	2 %	CALCIUM CHLORIDE - HI TEST PELLET (100005053)														
	5.26 Gal	FRESH WATER														
Calculated Values				Pressures				Volumes								
Displacement		Shut In: Instant			Lost Returns			Cement Slurry			Pad					
Top Of Cement		5 Min			Cement Returns			Actual Displacement			Treatment					
Frac Gradient		15 Min			Spacers			Load and Breakdown			Total Job					
Rates																
Circulating		Mixing			Displacement			Avg. Job								
Cement Left In Pipe		Amount	40 ft	Reason	Shoe Joint											
Frac Ring # 1 @		ID		Frac ring # 2 @		ID		Frac Ring # 3 @		ID		Frac Ring # 4 @				
The Information Stated Herein Is Correct						Customer Representative Signature										

HALLIBURTON

Lab Data

HALLIBURTON

Cementing Rockies, Vernal

LAB RESULTS - Lead

Job Information

Request/Slurry	164526/1	Rig Name	DHS DRILLING #6	Date	25/JUL/2011
Submitted By	Charli Brown	Job Type	Surface Casing	Bulk Plant	Vernal
Customer	Quicksilver Resources Inc.	Location	Moffat	Well	Stoddard 33-30

Well Information

Casing/Liner Size	9 5/8"	Depth MD	1200 ft	BHST	89 F
Hole Size	12 1/4"	Depth TVD	1200 ft	BHCT	72 F

Drilling Fluid Information

Mud Company	Type	Density	8.4 PPG	PV/YP
-------------	------	---------	---------	-------

Cement Information - Lead Design

Conc	UOM	Cement/Additive	Sample Type	Sample Date	Lot No.	Cement Properties	
						Slurry Density	12.30 PPG
						Slurry Yield	2.25 ft ³ /sk
						Water Requirement	13.12 GPS
						Water Source	Fresh Water
						Water Chloride	N/A ppm

Operation Test Results Request ID 164526/1

Thickening Time, Request Test ID:1645326, Historical Data

Temp (°F)	Pressure (psi)	Reached in (min)	Start BC	30 Bc (hh:mm)	50 Bc (hh:mm)	70 Bc (hh:mm)	100 Bc (hh:mm)
72	800	14	5	01:46	05:40	05:40	05:40

HALLIBURTON HALLIBURTON

Cementing Rockies, Vernal

LAB RESULTS - Tail

Job Information

Request/Slurry	164529/1	Rig Name	DHS DRILLING #6	Date	25/JUL/2011
Submitted By	Charli Brown	Job Type	Surface Casing	Bulk Plant	Vernal
Customer	Quicksilver Resources Inc.	Location	Moffat	Well	Stoddard 33-30

Well Information

Casing/Liner Size	9 5/8"	Depth MD	1200 ft	BHST	89 F
Hole Size	12 1/4"	Depth TVD	1200 ft	BHCT	72 F

Drilling Fluid Information

Mud Company	Type	Density	8.4 PPG	PV/YP
-------------	------	---------	---------	-------

Cement Information - Tail Design

<u>Conc</u>	<u>UOM</u>	<u>Cement/Additive</u>	<u>Sample Type</u>	<u>Sample Date</u>	<u>Lot No.</u>	Cement Properties		
						Slurry Density	13.50	PPG
						Slurry Yield	1.73	ft ³ /sk
						Water Requirement	9.2	GPS
						Water Source	Fresh Water	
						Water Chloride	N/A	ppm

Operation Test Results Request ID 164529/1

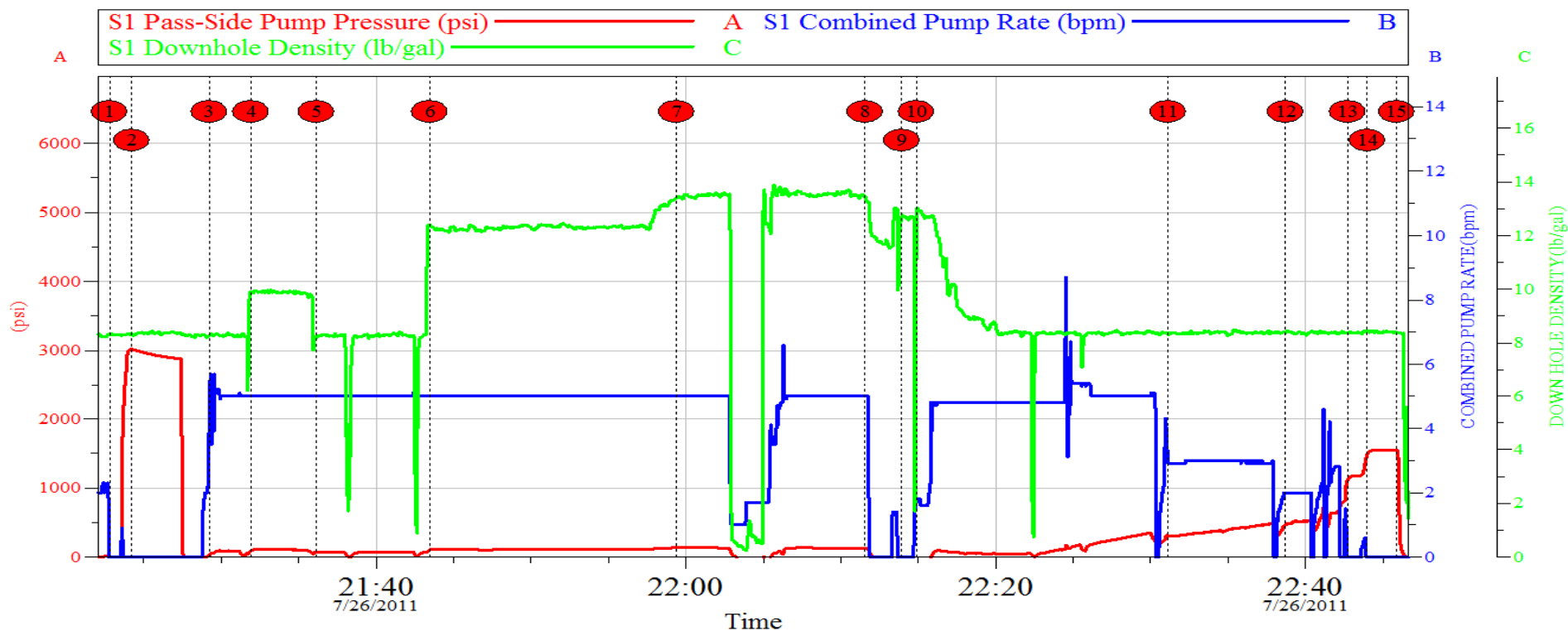
Thickening Time, Request Test ID:1645395, Historical Data

Temp (°F)	Pressure (psi)	Reached in (min)	Start BC	30 Bc (hh:mm)	50 Bc (hh:mm)	70 Bc (hh:mm)	100 Bc (hh:mm)
72	800	14	16	01:25	01:40	01:50	02:23

QuickSilver Stoddard 33-30

9.625 Surface

7/26/2011



Local Event Log					
1	Fill lines	21:22:48	2	Pressure test	21:24:13
3	Break circulation	21:29:14	4	Start superflush spacer	21:31:55
5	Start water spacer	21:36:09	6	Start lead cement	21:43:28
7	Start tail cement	21:59:24	8	Shutdown	22:11:34
9	Drop plug	22:13:56	10	Start displacement	22:14:53
11	Slow rate	22:31:08	12	Slow rate	22:38:43
13	Slow rate	22:42:44	14	Land plug	22:43:59
15	Check floats	22:45:53			