

**QUICKSILVER RESOURCES INC-EBUSINESS
DO NOT MAIL - 801 CHERRY ST
FORT WORTH, Texas**

Stoddard 33-30

DHS 6

Post Job Summary **Cement Intermediate Casing**

Date Prepared: 8/8/11
Version: 1

Service Supervisor: PAUU, SEMISI

Submitted by: Isaac Whorl

HALLIBURTON

HALLIBURTON

Wellbore Geometry

Job Tubulars					MD		Shoe Joint Length ft
Type	Description	Size in	ID in	Wt lbm/ft	Top ft	Bottom ft	
Casing	Surface Casing	9.63	8.921	36.00	0.00	1,200.00	40.00
Open Hole Section	Intermediate Open Hole		8.750		1,200.00	6,400.00	0.00
Casing	Intermediate Casing	7.00	6.276	26.00	0.00	6,400.00	40.00
Casing	Multiple Stage Cementer	7.00	.000		3,000.00	3,000.00	0.00

Pumping Schedule

Stage #	Fluid #	Fluid Type	Fluid Name	Density lbm/gal	Avg Rate bbl/min	Volume
1	1	Spacer	Tuned Spacer III	10.00	5.00	20.0 bbl
1	2	Cement Slurry	EconoCem	12.20	5.00	275.0 sacks
1	3	Cement Slurry	ExtendaCem	14.20	5.00	75.0 sacks
1	4	Mud	Oil Base Mud Displacement	8.40	5.00	242.0 bbl
2	1	Spacer	Tuned Spacer III	10.00	5.00	20.0 bbl
2	2	Cement Slurry	EconoCem	12.20	5.00	200.0 sacks
2	3	Cement Slurry	ExtendaCem	14.20	5.00	70.0 sacks
2	4	Mud	Oil Base Mud Displacement	8.40	5.00	115.0 bbl

HALLIBURTON

Fluids Pumped

Stage/Plug # 1 Fluid 1: Tuned Spacer III
TUNED SPACER III - SBM (483826)

Fluid Density: 10.00 lbm/gal
Fluid Volume: 20.00 bbl

Stage/Plug # 1 Fluid 2: EconoCem
ECONOCEM (TM) SYSTEM

Fluid Weight: 12.20 lbm/gal
Slurry Yield: 2.20 ft³/sack
Total Mixing Fluid: 12.14 Gal
Volume: 275.0 sacks
Calculated Fill: 1,500.00 ft
Calculated Top of Fluid: 3,600.00 ft

Stage/Plug # 1 Fluid 3: ExtendaCem
EXTENDACEM (TM) SYSTEM

Fluid Weight: 14.20 lbm/gal
Slurry Yield: 1.28 ft³/sack
Total Mixing Fluid: 5.60 Gal
Volume: 75.0 sacks
Calculated Fill: 500.00 ft
Calculated Top of Fluid: 5,100.00 ft

Stage/Plug # 1 Fluid 4: Oil Base Mud
Displacement

Fluid Density: 8.40 lbm/gal
Fluid Volume: 242.00 bbl

Stage/Plug # 2 Fluid 1: Tuned Spacer III
TUNED SPACER III - SBM (483826)

Fluid Density: 10.00 lbm/gal
Fluid Volume: 20.00 bbl

Stage/Plug # 2 Fluid 2: EconoCem
ECONOCEM (TM) SYSTEM

Fluid Weight: 12.20 lbm/gal
Slurry Yield: 2.22 ft³/sack
Total Mixing Fluid: 12.23 Gal
Volume: 200.0 sacks
Calculated Fill: 3,100.00 ft
Calculated Top of Fluid: 0.00 ft

Stage/Plug # 2 Fluid 3: ExtendaCem
EXTENDACEM (TM) SYSTEM

Fluid Weight: 14.20 lbm/gal
Slurry Yield: 1.28 ft³/sack
Total Mixing Fluid: 5.60 Gal
Volume: 70.0 sacks
Calculated Fill: 500.00 ft
Calculated Top of Fluid: 3,100.00 ft

Stage/Plug # 2 Fluid 4: Oil Base Mud
Displacement

Fluid Density: 8.40 lbm/gal
Fluid Volume: 115.00 bbl

HALLIBURTON

Job Summary

Job Information

Job Start Date	8/1/2011 8:00:00 AM
Job MD	6,389.0 ft
Job TVD	6,400.0 ft
Height of Plug Container/Swage Above Rig Floor	5.0 ft
Surface Temperature at Time of Job	80 degF
Mud Type	INTEGRADE
Actual Mud Density	9 lbm/gal
Time Circulated before job	2.00 hour(s)
Rate at Which Well was Circulated	6.000 bbl/min
Pipe Movement During Hole Circulation	Reciprocated
Time From End Mud Circ. to Job Start	15.00 minute
Pipe Movement During Cementing	Reciprocated
Calculated Displacement	242.00 bbl
Job Displaced by (rig/halco)	Rig & Cement Pumps
Length of Rat Hole	10.00 ft

Cementing Equipment

Number of Centralizers Used	50
Pipe Centralization	Through Entire Cement Column
Brand of Float Equipment Used	HALLIBURTON
Did Float Equipment Hold?	Yes
Plug set used?	Yes
Brand of Plug set used?	HALLIBURTON
Did Plugs Bump?	Yes
Calculated Pressure to Bump Plugs	1,050.0 psig
Brand of Stage Cementing Tools Used	HALLIBURTON
Did Stage Cementing Tool Open Properly?	Yes

HALLIBURTON

Service Supervisor Reports

Job Log

Date/Time	Activity Code	Pump Rate	Volume	Pressure (psig)	Comments
07/31/2011 20:00	Call Out				
07/31/2011 22:00	Pre-Convoy Safety Meeting				
07/31/2011 22:15	Depart from Service Center or Other Site				
08/01/2011 01:00	Arrive At Loc				
08/01/2011 01:15	Safety Meeting - Assessment of Location				
08/01/2011 05:30	Pre-Rig Up Safety Meeting				
08/01/2011 06:00	Rig-Up Equipment				
08/01/2011 07:00	Rig-Up Completed				
08/01/2011 07:25	Pre-Job Safety Meeting				
08/01/2011 07:30	Other				Turned well over to rig to circulate well while we waited on elevators.
08/01/2011 08:17	Pressure Test	2		5100.0	Pressure tested lines to 5000 psi, no leaks
08/01/2011 08:25	Pump Spacer 1	4		200.0	Pumped 20 bbl of Tuned Spacer III at 10#/gal 5.91 Yield 40.03 gal/sks with Musol and Sem-7
08/01/2011 08:32	Pump 1st Stage Lead Slurry	4		130.0	Started Lead Cement 108 bbl (275 sks) at 12.2#/gal 2.2 Yield 12.14 gal/sks
08/01/2011 08:54	Pump 1st Stage Tail Slurry	4		145.0	Started Tail Cement 16 bbl (75 sks) at 14.2#/gal 1.28 Yield 5.6 gal/sks
08/01/2011 09:02	Other				Finished pumping Cement. Prepared to Start washing pumps on top of 7" stage plug, As per Company Man's Request
08/01/2011 09:04	Pump Displacement	5		40.0	Started 242.5 bbl Fresh water displacement
08/01/2011 09:24	Slow Rate	2	105	40.0	Slowed Rate to 2 bbl/min in preparation to stage plug passing through tool
08/01/2011 09:34	Other	5	125	40.0	Increased rate back to 5 bbl/min
08/01/2011 09:55	Slow Rate	3	232	900.0	Slowed Rate to 3 bbl/min in preparation to landing the Plug
08/01/2011 10:00	Bump Plug	3	242	1000.0	Landed Plug at 900psi. Pressured over 1500 psi to 2500 psi as per Company Man Request
08/01/2011 10:02	Check Floats				Checked Floats Back to Truck. Floats held with 2 bbl back to truck
08/01/2011 10:08	Other				Dropped Bomb, waited 15 min. Bomb dropped by Mike Still

HALLIBURTON

Date/Time	Activity Code	Pump Rate	Volume	Pressure (psig)	Comments
08/01/2011 10:25	Pump Spacer 1	6		200.0	Pressured up on Bomb at .8bbl/min to 800 psi, opening tool then pumped 20 bbl's fresh spacer at 6 bbl/min
08/01/2011 10:30	Other				Shutdown, Turned well over to rig crew to circulate well and wait for second stage plug
08/01/2011 16:25	Pre-Job Safety Meeting				
08/01/2011 16:49	Pressure Test	2		5000.0	Pressure tested Lines to 5000 psi. No leaks
08/01/2011 16:52	Pump Spacer 1	4		30.0	Pumped 20 bbl of Tuned Spacer III at 10#/gal 5.91 Yield 40.03 gal/sks with Musol and Sem-7
08/01/2011 16:54	Pump 2nd Stage Lead Slurry	4		70.0	Pumped 79 BBL Lead Cement (200 sks) at 12.2#/gal 2.22 Yield 12.23 gal/sks
08/01/2011 17:13	Pump 2nd Stage Tail Slurry	4		100.0	Pumped 16 BBL Tail Cement (70 sks) at 14.2#/gal 1.28 Yield 5.6 gal/sks
08/01/2011 17:19	Shutdown				Finished pumping Cement, shutdown and dropped plug. Plug dropped by Mike Still
08/01/2011 17:20	Pump Displacement	5		30.0	Started Displacement, Washed up pump and lines on top of plug as per company man's request
08/01/2011 17:42	Slow Rate	3	105	300.0	Slowed Rate to 3 bbl/min in preparation to landing the Plug
08/01/2011 17:45	Bump Plug	3	115	1900.0	Bumped plug at 400 psi, pressured over 1500 psi to 1900 to set tool
08/01/2011 17:46	Check Floats				Checked Floats, Floats held with 1 bbl back to truck
08/01/2011 18:00	Safety Meeting - Pre Rig-Down				
08/01/2011 18:15	Rig-Down Equipment				
08/01/2011 19:15	Rig-Down Completed				
08/01/2011 19:20	Safety Meeting - Departing Location				
08/01/2011 19:30	Depart Location for Service Center or Other Site				Thank you for choosing Halliburton Cementing. This job was completed safely by Semisi Pauu and crew

The Road to Excellence Starts with Safety

Sold To #: 346707		Ship To #: 2868987		Quote #:		Sales Order #: 8360153	
Customer: QUICKSILVER RESOURCES INC-EBUSINESS				Customer Rep: Hord, Ryan			
Well Name: Stoddard			Well #: 33-30			API/UWI #:	
Field:		City (SAP): CRAIG		County/Parish:		State: Colorado	
Contractor: DHS			Rig/Platform Name/Num: 6				
Job Purpose: Cement Intermediate Casing							
Well Type: Exploratory / Wildcat				Job Type: Cement Intermediate Casing			
Sales Person: SCOTT, KYLE			Srv Supervisor: PAUU, SEMISI			MBU ID Emp #: 445202	
Job Personnel							
HES Emp Name	Exp Hrs	Emp #	HES Emp Name	Exp Hrs	Emp #	HES Emp Name	Exp Hrs
FUCHS, ERIC James		471203	HUNTER, SAMUEL David		479669	LAWTON, CURTIS Keith	
PAUU, SEMISI Tu'a		445202	SAGE, JAMES Edwin		470468	STILL, MICHEAL Wayne	
Equipment							
HES Unit #	Distance-1 way	HES Unit #	Distance-1 way	HES Unit #	Distance-1 way	HES Unit #	Distance-1 way
11526496	80 mile						
Job Hours							
Date	On Location Hours	Operating Hours	Date	On Location Hours	Operating Hours	Date	On Location Hours
TOTAL			<i>Total is the sum of each column separately</i>				
Job				Job Times			
Formation Name				Date			
Formation Depth (MD) Top				Time			
Bottom				Time Zone			
Form Type				Called Out			
Job depth MD				On Location			
Water Depth				Job Started			
Perforation Depth (MD) From				Job Completed			
To				Departed Loc			
Well Data							
Description	New / Used	Max pressure psig	Size in	ID in	Weight lbm/ft	Thread	Grade
Top MD ft	Bottom MD ft	Top TVD ft	Bottom TVD ft				
Intermediate Open Hole			8.75				
Intermediate Casing	Unknown		7.	6.276	26.		L-80
Multiple Stage Cementer	Unknown		7.	.			L-80
Surface Casing	Unknown		9.625	8.921	36.		J-55
Sales/Rental/3rd Party (HES)							
Description				Qty	Qty uom	Depth	Supplier
SHOE,FLT,7 8RD,L-80,2-3/4 SSII				1	EA		
CLR,FLT,7 8RD 23-29PPF,L-80,2-3/4				1	EA		
KIT,HALL WELD-A				2	EA		
CMTR,TY P ES-II,7 LG 8RD 26-32PPF,P/Q				1	EA		
PLUG SET-FREE FALL-7"-8RD				1	EA		
Description				Qty	Qty uom	Depth	Supplier

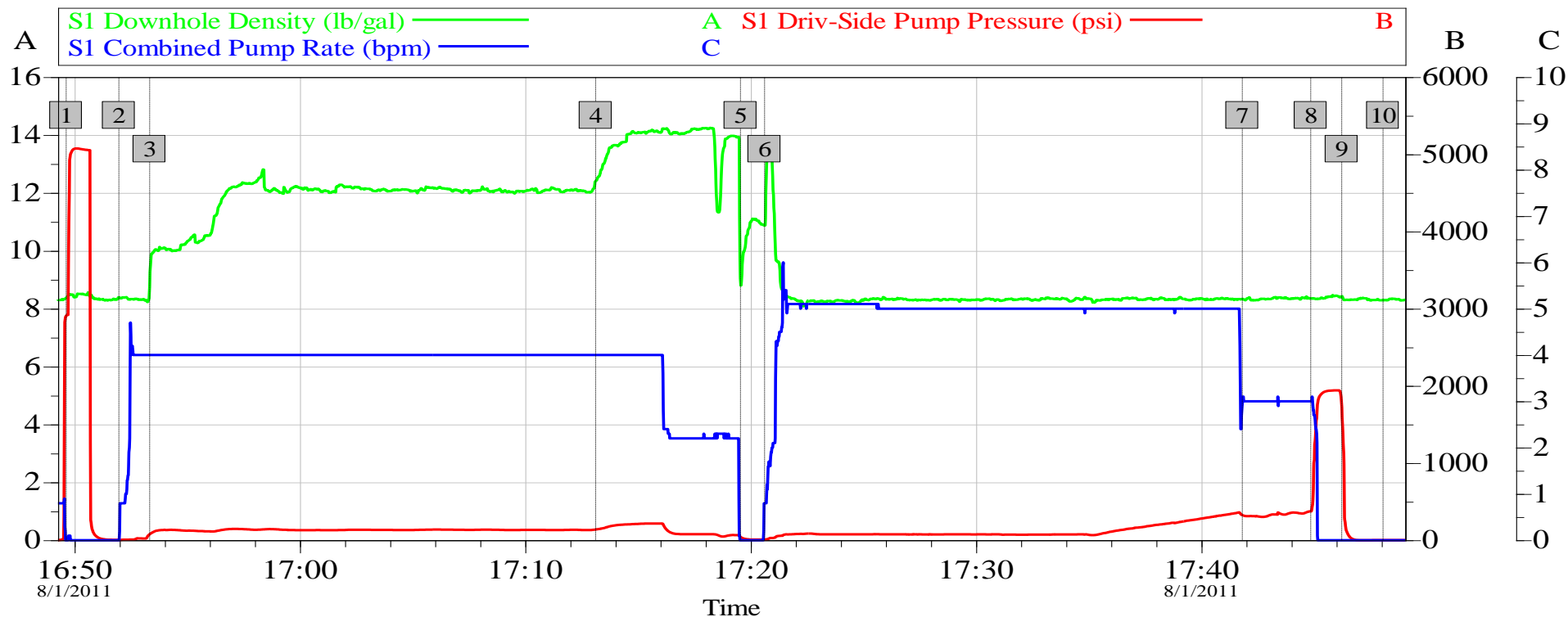
SUGAR - GRANULATED										30	LB				
Tools and Accessories															
Type	Size	Qty	Make	Depth	Type	Size	Qty	Make	Depth	Type	Size	Qty	Make		
Guide Shoe					Packer					Top Plug					
Float Shoe					Bridge Plug					Bottom Plug					
Float Collar					Retainer					SSR plug set					
Insert Float										Plug Container					
Stage Tool										Centralizers					
Miscellaneous Materials															
Gelling Agt			Conc		Surfactant			Conc		Acid Type			Qty	Conc	%
Treatment Fld			Conc		Inhibitor			Conc		Sand Type			Size	Qty	
Fluid Data															
Stage/Plug #: 1															
Fluid #	Stage Type	Fluid Name			Qty	Qty uom	Mixing Density lbm/gal	Yield ft3/sk	Mix Fluid Gal/sk	Rate bbl/min	Total Mix Fluid Gal/sk				
1	Tuned Spacer III	TUNED SPACER III - SBM (483826)			20.00	bbl	10.	5.91	40.03	5.0					
2	EconoCem	ECONOCER (TM) SYSTEM (452992)			275.0	sacks	12.2	2.2	12.14	5.0	12.14				
		12.215 Gal			FRESH WATER										
3	ExtendaCem	EXTENDACER (TM) SYSTEM (452981)			75.0	sacks	14.2	1.28	5.6	5.0	5.6				
		5.6 Gal			FRESH WATER										
4	Oil Base Mud Displacement				242.00	bbl	8.4			5.0					
Stage/Plug #: 2															
Fluid #	Stage Type	Fluid Name			Qty	Qty uom	Mixing Density uom	Yield uom	Mix Fluid uom	Rate uom	Total Mix Fluid uom				
1	Tuned Spacer III				20.00	bbl	10.	5.91	40.03	5.0					
2	EconoCem	ECONOCER (TM) SYSTEM (452992)			200.0	sacks	12.2	2.22	12.23	5.0	12.23				
		12.23 Gal			FRESH WATER										
3	ExtendaCem	EXTENDACER (TM) SYSTEM (452981)			70.0	sacks	14.2	1.28	5.6	5.0	5.6				
		5.6 Gal			FRESH WATER										
4	Oil Base Mud Displacement				115.00	bbl	8.4			5.0					
Calculated Values		Pressures			Volumes										
Displacement		Shut In: Instant			Lost Returns			Cement Slurry			Pad				
Top Of Cement		5 Min			Cement Returns			Actual Displacement			Treatment				
Frac Gradient		15 Min			Spacers			Load and Breakdown			Total Job				
Rates															
Circulating		Mixing			Displacement			Avg. Job							
Cement Left In Pipe		Amount	40 ft	Reason	Shoe Joint										
Frac Ring # 1 @		ID	Frac ring # 2 @	ID	Frac Ring # 3 @		ID	Frac Ring # 4 @		ID					
The Information Stated Herein Is Correct					Customer Representative Signature										

HALLIBURTON

Data Acquisition

QUICKSILVER RESOURCES 2ND STAGE INTERMEDIATE

8-1-2011 SO# 8360153



Intersection		SDPP	Intersection		SDPP
1	Pressure Test 5k	16:49:38 2908	2	Pump 20 bbl TSIII	16:51:58 6.000
3	Pump 79 bbl Lead	16:53:20 77.52	4	Pump 16 bbl Tail	17:13:08 140.0
5	Shutdown/Drop Plug	17:19:33 42.82	6	Pump Displacement/Washup	17:20:37 9.002
7	Slow Rate 3 bbl/min	17:41:49 325.7	8	Bump Plug	17:44:51 375.0
9	Check Floats	17:46:14 1757	10	End Job	17:48:04 2.000

Customer: Quicksilver Resource
Well Description: Stoddard 33-30
SVC LDR: Mike Still

Job Date: 01-Aug-2011
Rig Name: DHS 6
SVC SUP: Semisi Pauu

Sales Order #: 8360153
Pump Truck: 10872113
SVC OPR: Eric Fuchs

OptiCem v6.4.10
01-Aug-11 18:04

HALLIBURTON

Lab Data

HALLIBURTON

Cementing Rockies, Vernal

LAB RESULTS - Lead

Job Information

Request/Slurry	165976/3	Rig Name	DHS DRILLING #6	Date	31/JUL/2011
Submitted By	Joshua Anglin	Job Type	Intermediate Casing	Bulk Plant	Vernal
Customer	Quicksilver Resources Inc.	Location	Moffat	Well	Stoddard 33-30

Well Information

Casing/Liner Size	7"	Depth MD	6650 ft	BHST	166 F
Hole Size	8 3/4"	Depth TVD	0 ft	BHCT	122 F

Cement Information - Lead Design

Conc	UOM	Cement/Additive	Sample Type	Sample Date	Lot No.	Cement Properties		
						Slurry Density	12.20	PPG
						Slurry Yield	2.23	ft ³ /sk
100.00	% BWOC	EconoCem Cement Blend	Bulk	Jul 31, 2011		Water Requirement	12.11	GPS
0.130	lb/sk	Pol-E-Flake	Bulk	Jul 31, 2011		Water Source	Fresh Water	
1.500	% BWOC	HR-5	Bulk	Jul 31, 2011	SXC06Y-2053JP			
12.11	gal/sack	Fresh Water	Lab	May 29, 2011	5-29-2011			

Operation Test Results Request ID 165976/3

Thickening Time, Request Test ID:1659401

Temp (°F)	Pressure (psi)	Reached in (min)	Start BC	30 Bc (hh:mm)	50 Bc (hh:mm)	70 Bc (hh:mm)	100 Bc (hh:mm)
122	3,960	36	2	07:06	07:06	07:06	07:06

At 1:15 motor was shutdown for 30 minutes bcs remained at 3.

Mixability (0 - 5) - 0 is not mixable, Request Test ID:1659403

Mixability rating (0 - 5)

5

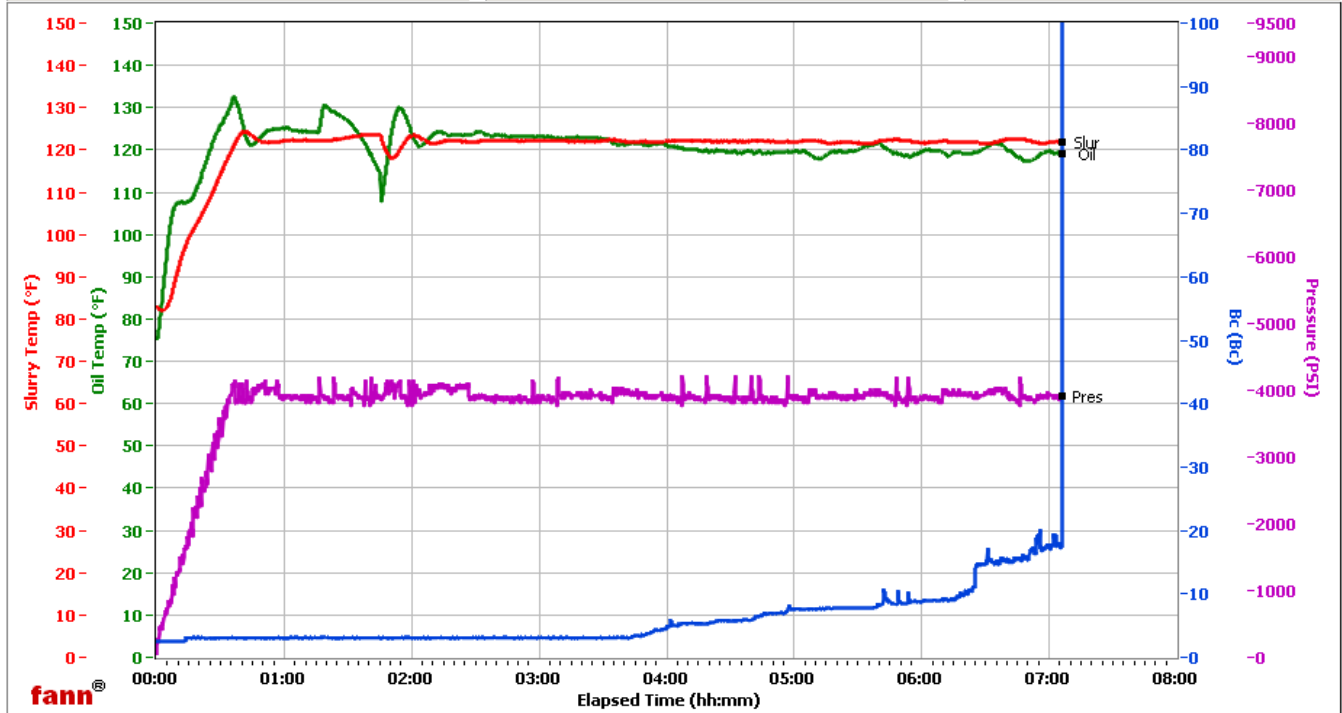
HALLIBURTON

VERNAL

Fields	Values
Project Name	QUICKSILVER 165976-3
Test ID	165976-3
Request ID	HPHT #3
Tested by	PBL
Customer	QUICKSILVER RESOURCES
Well No	STODDARD 33-30
Rig	DHS DRILLING #6
Casing/Liner Size	7

Fields	Values
Job Type	INTERMEDIATE LEAD OPN
Cement Type	G/III
Cement Weight	Light Weight
Test Date	07/31/11
Test Time	09:55 PM
Temp. Units	degF
Pressure Units	PSI

Events	Results
30.00 Bc	07h:06m
50.00 Bc	07h:06m
60.00 Bc	07h:06m
70.00 Bc	07h:06m
100.00 Bc	07h:06m
200.00 Bc	NaN
03h:00m	3.11
06h:00m	8.76



Data File Z:\HPHT Data Files\Vernal Consistometer #3\QUICKSILVER 165976-3.tdms

Comments MOUNTAIN G/TYP III/ENHANCER 923/POZ 27/27/18/35%, HR-5 1.5%

Job Information

Request/Slurry	165691/1	Rig Name	DHS DRILLING #6	Date	29/JUL/2011
Submitted By	Joshua Anglin	Job Type	Intermediate Casing	Bulk Plant	Vernal
Customer	Quicksilver Resources Inc.	Location	Moffat	Well	Stoddard 33-30

Well Information

Casing/Liner Size	7"	Depth MD	6650 ft	BHST	166 F
Hole Size	8 3/4"	Depth TVD	0 ft	BHCT	122 F

Cement Information - Tail Design

Conc	UOM	Cement/Additive	Sample Type	Sample Date	Lot No.	Cement Properties		
		ExtendaCem				Slurry Density	14.20	PPG
						Slurry Yield	1.28	ft3/sk
100.00	% BWOC	Cement Blend	Bulk	Jul 29, 2011		Water Requirement	5.6	GPS
0.400	% BWOC	HR-5	Bulk	Jul 29, 2011	SXCO6Y-2053JP	Water Source	Fresh Water	
0.125	lb/sk	Pol-E-Flake	Bulk	Jul 29, 2011				
5.60	gal/sack	Fresh Water	Lab	May 29, 2011	5-29-2011			

Operation Test Results Request ID 165691/1

Thickening Time, Request Test ID:1656121

Temp (°F)	Pressure (psi)	Reached in (min)	Start BC	30 Bc (hh:mm)	50 Bc (hh:mm)	70 Bc (hh:mm)	100 Bc (hh:mm)
122	3,960	36	22	04:16	04:30	04:35	04:35

Pumped long of the window by 1:05.

Mixability (0 - 5) - 0 is not mixable, Request Test ID:1656126

Mixability rating (0 - 5)

5

API Rheology, Request Test ID:1656141

Temp (°F)	600	300	200	100	60	30	6	3	Cond Time (min)	PV/YP
80	79	45	34	24	18	16	13	12	0	33.2 / 12.7

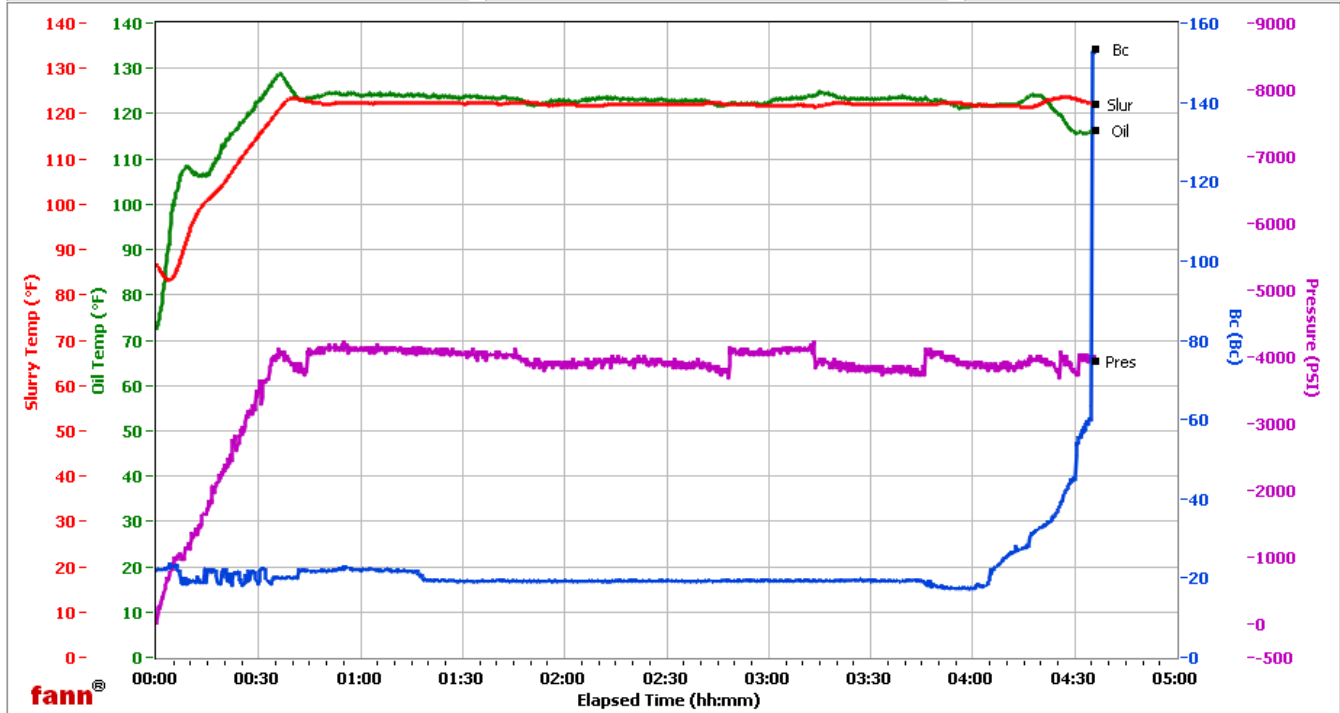
HALLIBURTON

Vernal

Fields	Values
Project Name	Quicksilver 165691-1
Test ID	165691-1
Request ID	HPHT #5
Tested by	D.O.
Customer	Quicksilver
Well No	Stoddard 33-10
Rig	DHS Drilling #6
Casing/Liner Size	7

Fields	Values
Job Type	Intermediate Tail
Cement Type	G
Cement Weight	Light Weight
Test Date	07/30/11
Test Time	06:19 AM
Temp. Units	degF
Pressure Units	PSI

Events	Results
30.00 Bc	04h:16m
50.00 Bc	04h:30m
60.00 Bc	04h:34m
70.00 Bc	04h:35m
100.00 Bc	04h:35m
200.00 Bc	NaN
03h:00m	19.11
06h:00m	NaN



Data File O:\HPHT Data Files\Vernal Consistometer #5\Quicksilver 165691-1.tdms

Comments 50/50 poz, .4 HR-5 14 den, 1.28 yd