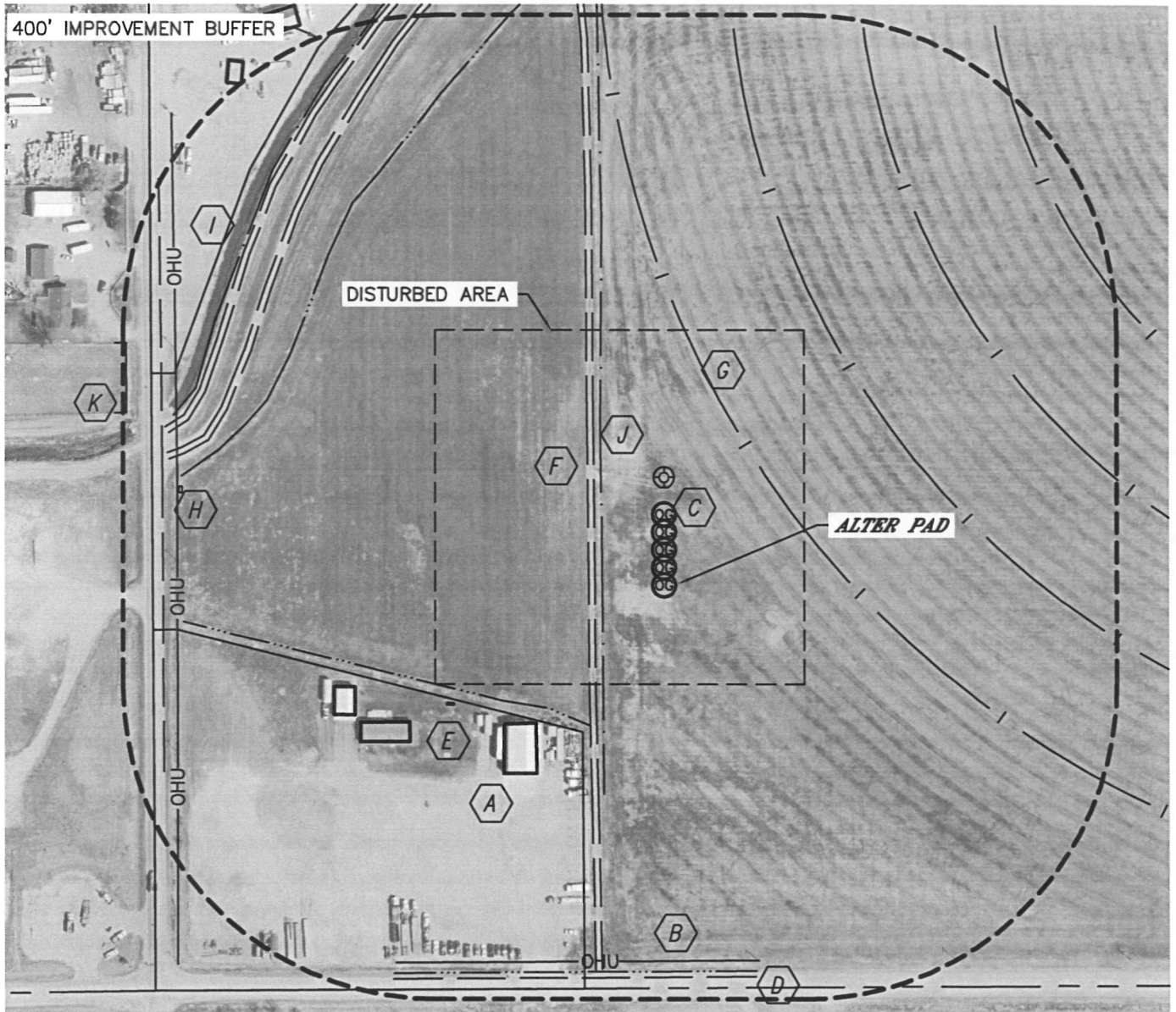


LOCATION DRAWING

ALTER C09-24D, 33D, C16-28D, 29D,
MARK ALTER C16-79HN,

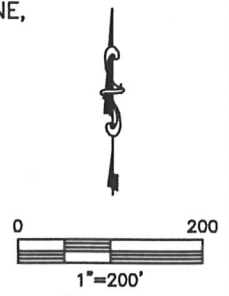
SECTION: 9
TOWNSHIP: 4N
RANGE: 64W



IMPROVEMENTS:

(MEASURED FROM THE MARK ALTER C16-79HN LOCATION)

- | | |
|--|---|
| A BUILDING 241' SW, 370 SW,
417' SW, 836' NW | F FIELD ROAD 89' W, 603' NW, 637' NW |
| B OVERHEAD UTILITY 477' S,
624' W | G IRRIGATION PIVOT TRACK 187' NE,
352' NE, 518' NE, 685' NE |
| C JOHNSON 9-13 137' N | H GAS RISER 629' W |
| D COUNTY ROAD 498' S, 643' W | I CANAL 650' NW |
| E PROPANE TANK 309' SW | J DITCH 80' W, 202' SW,
490' S, 560' NW |
| | K FENCE 723' NW |



ALL DISTANCES ARE APPROXIMATE.

NEAREST: BUILDING 241' SW, PUBLIC ROAD (CR 46) 498' S,
ABOVE GROUND UTILITY 477' S, RAILROAD 5280'+, PROPERTY LINE 214' SW