

# Downhole Schematic for Federal 25-7BB (PH25)



Project : South Piceance

API # : 05045191260000

Surface Location : SENE Sec 25 T7S - R95W 6th PM

Area : Parachute

County : GARFIELD

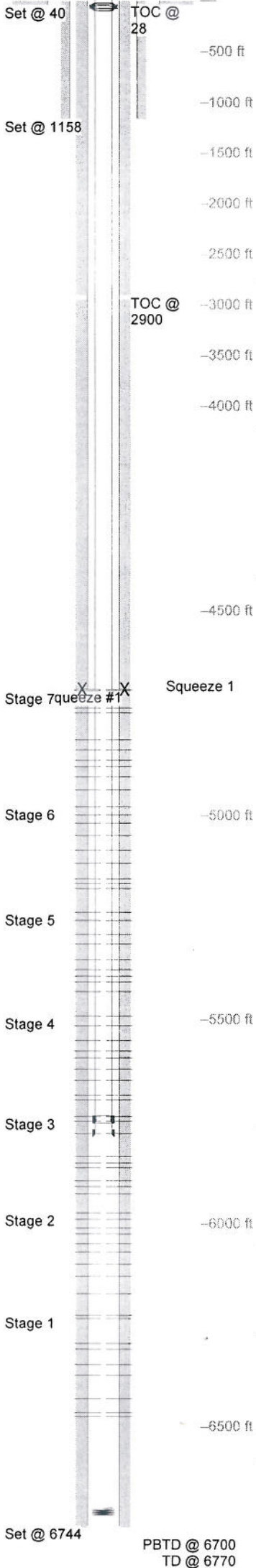
BHL : SENE-25-7S-95 W 6th PM

As Of : 08/08/2011

GL : 6064.0 ft

KB to GL : 23.0 ft

KB : 6087.0 ft



Casing Details									
Section	Hole	Casing	Mass	Set At	Length	Thread	Grade	Description	
Conductor	26.000	16	42	40	40		A52A	Joint	
Surface	12.250	9.625	0	1,158	1			Cement Shoe	
		9.625	36	1,157	43	LT&C	J55	Shoe Track	
		9.625	36	1,114	1,085	LT&C	J55	Casing	
			0	29	5			Casing Head	
Production	7.875	9.625	36	24	27	LT&C	J55	Landing Jt.	
		4.5	0	6,744	1	LT&C		Float Shoe	
		4.5	11.6	6,743	41	LT&C	E-80	Casing	
		4.5	0	6,701	1	LT&C		Float Collar	
		4.5	11.6	6,700	904	LT&C	E-80	Casing	
		4.5	11.6	5,796	23	LT&C	E-80	Marker Jt.	
		4.5	11.6	5,773	947	LT&C	E-80	Casing	
		4.5	11.6	4,826	23	LT&C	E-80	Marker Jt.	
		4.5	11.6	4,803	4,775	LT&C	E-80	Casing	
		4.5	11.6	29	6	LT&C	E-80	Mandel w/pup jt.	
	4.5	11.6	23	28	LT&C	P-110	Landing Jt.		

Cement Details					
Section	Sequence	Top	Density	Blend / Additives	
Conductor	Fill	0	0.0	4 yards redi mix /	
Surface	Lead	0	8.3	20 bbls. water spacer /	
	Tail	862	12.5	12.5 #/gal. -Class G / G+2%D79+0.2%D46+0.25 pps D29	
Production	Lead	0	15.8	15.8 #/gal - Class G / D907+1.25%SOO1+0.2%D046+0.25ppsD29	
	Tail	0	0.0	Water / 20 bbls	
	Lead	2,900	9.4	Mudpush II / 30 bbls	
	Tail	2,944	8.3	Zonelock / 30 bbls.	
			9.6	LiteCrete / 41 #/sk D907, 13 #/sk D154, 46 #/sk D124, .3% D065, .2% D046, .256 #/sk D029, .350% D013	

Tubing and Downhole Equipment				
O.D.	Length	Depth	Description	
0.000	21.00	21.00	KB	
4.063	0.82	21.82	Tubing Hanger WG 5K	
2.594	0.67	22.49	Saver Sub	
2.375	5,711.48	5,733.97	174 jts L80 2 3/8" 4.7#	
3.063	0.89	5,734.86	F-Nipple	
2.375	32.85	5,767.71	1 jt L80 2 3/8" 4.7#	
3.125	0.91	5,768.62	POBS	
3.250	1.22	6,700.00	POBS and 3 3/4" mill	

Perforations							
Stage	Date	From	To	Shots			
Stage 1	05/21/2011	6,474	6,475	3	5,576	5,577	3
		6,464	6,465	3	5,550	5,551	3
		6,430	6,431	3	5,514	5,515	3
		6,372	6,373	3	5,490	5,491	3
		6,346	6,347	3			
Stage 5	07/28/2011	5,406	5,407	3			
		5,392	5,393	3			
		5,376	5,377	3			
		5,352	5,353	3			
		5,314	5,315	3			
Stage 2	07/27/2011	5,290	5,291	3			
		5,256	5,257	3			
		5,236	5,237	3			
		6,098	6,099	3			
		6,068	6,069	3			
Stage 6	07/29/2011	6,048	6,049	3			
		6,024	6,025	3			
		6,010	6,011	3			
		5,988	5,989	3			
		5,972	5,973	3			
Stage 3	07/28/2011	5,926	5,927	3			
		5,908	5,909	3			
		5,894	5,895	3			
		5,862	5,863	3			
		5,850	5,851	3			
Stage 7	07/30/2011	4,936	4,937	3			
		4,904	4,905	3			
		4,880	4,881	3			
		4,864	4,865	3			
		4,838	4,839	3			
Stage 4	07/28/2011	4,814	4,815	3			
		4,748	4,749	3			
		4,736	4,737	3			
		4,694	4,695	3			
		4,690	4,691	4			
Stage squeeze #1							
	08/06/2011	4,690	4,691	4			

Frac Summary	
Stage 1	: 6,224 - 6,475, 27 - 0.340" shots, 10346 bbls Report Date: 05/23/2011
Stage 2	: 5,972 - 6,171, 27 - 0.340" shots, 14880 bbls of Slickwater Report Date: 07/27/2011
Stage 3	: 5,736 - 5,927, 27 - 0.340" shots, 16339 bbls of Slickwater Report Date: 07/28/2011
Stage 4	: 5,490 - 5,697, 27 - 0.340" shots, 10129 bbls of Slickwater Report Date: 07/28/2011
Stage 5	: 5,236 - 5,431, 27 - 0.340" shots, 7943 bbls of Slickwater Report Date: 07/28/2011
Stage 6	: 4,978 - 5,179, 27 - 0.340" shots, 12042 bbls of Slickwater Report Date: 07/29/2011
Stage 7	: 4,694 - 4,937, 27 - 0.340" shots, 6618 bbls of Slickwater Report Date: 07/30/2011
Stage squeeze #1	: No Frac

Bridge Plug Details			
Depth	Date Set	Plug Type	Sacks Cement
4,780.0	06/22/2011	CBP	0
CBP at 4,780.0 drilled out 06/26/2011			

Cement Squeeze				
Squeeze #	Date	From	To	Holes
1	06/23/2011	4,690	4,691	4
# Sacks 250				

Comments  
SIBP 10 psi on 8/8/11