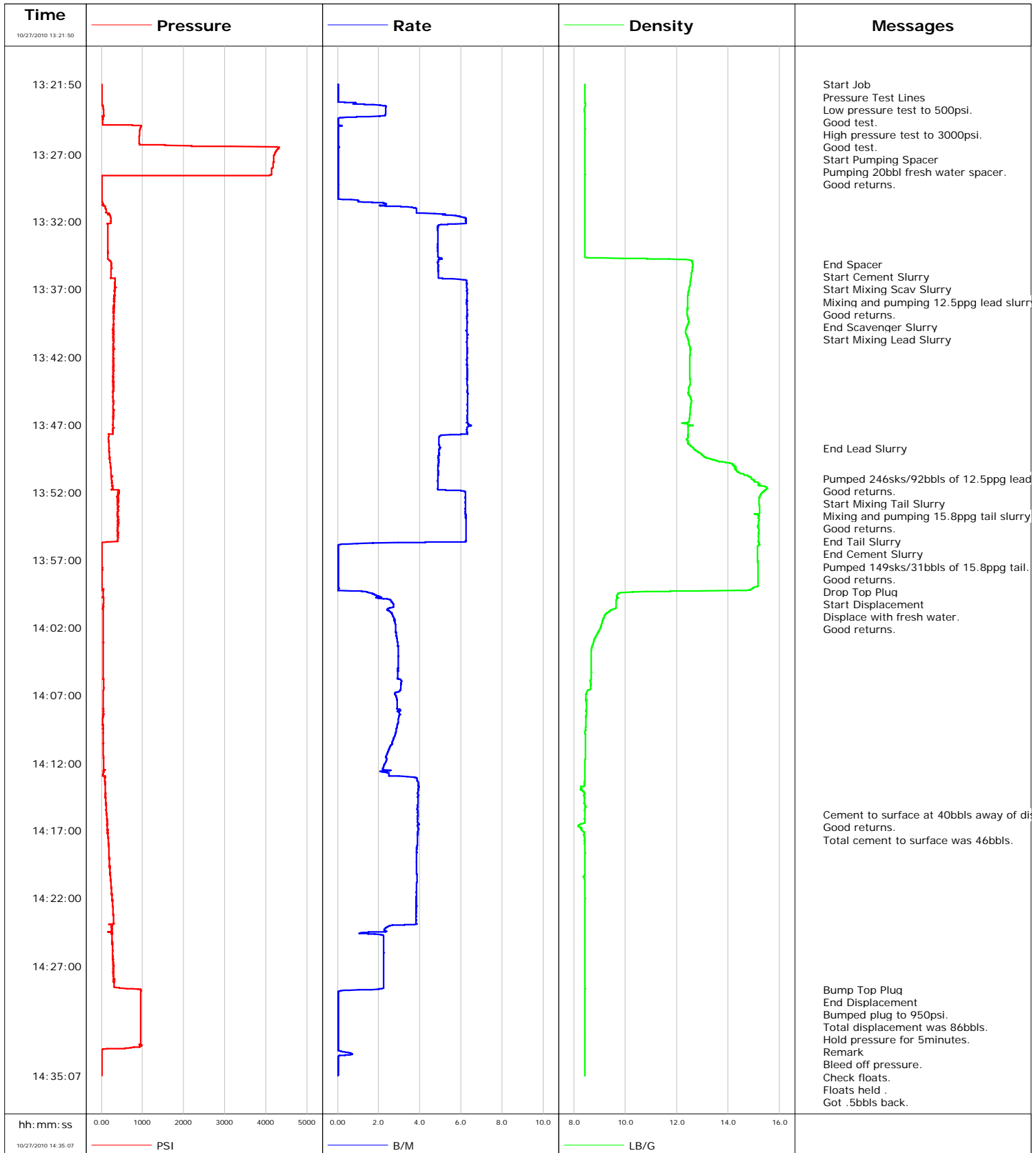


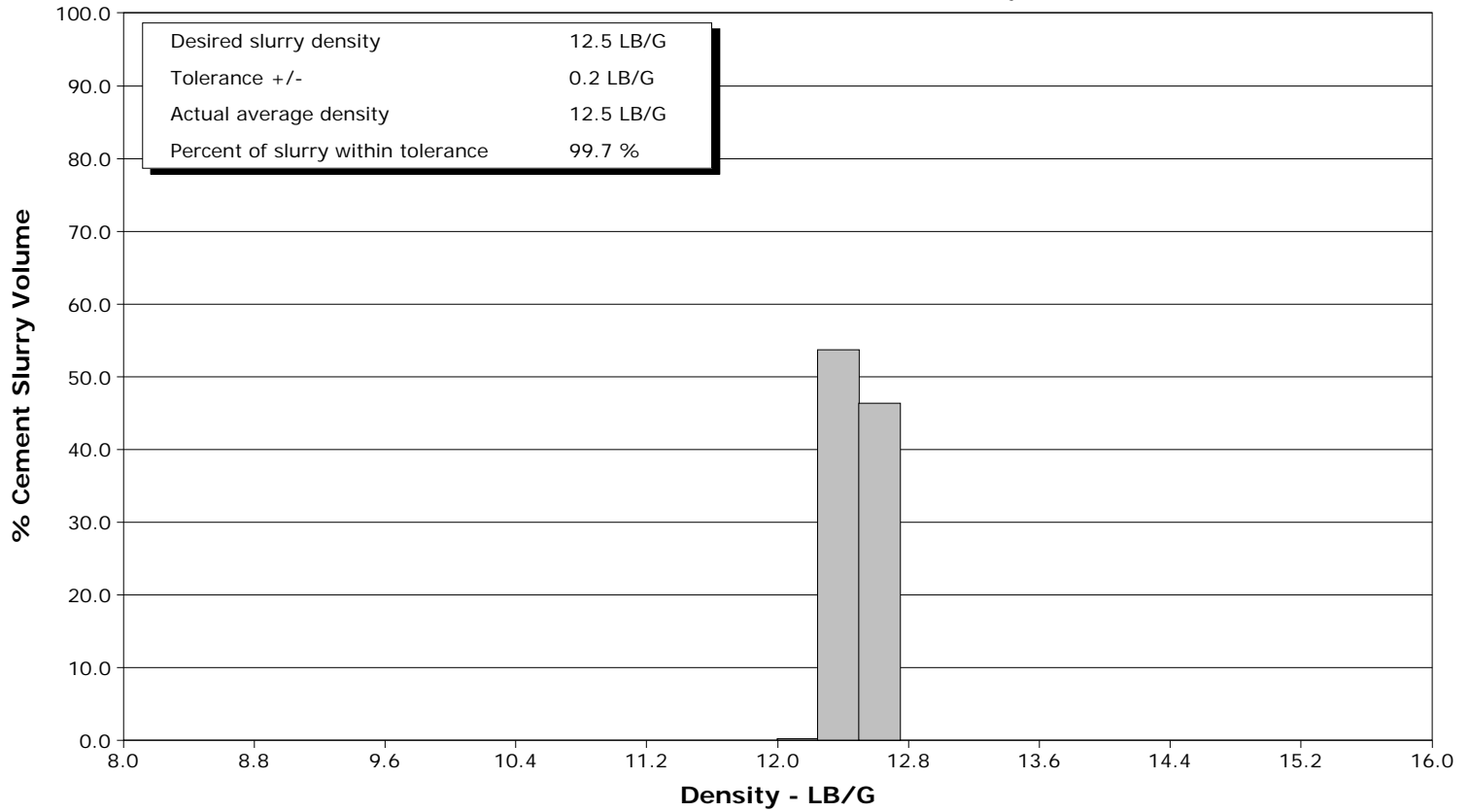
<b>Well</b>	FEDERAL 25-7BB	<b>Client</b>	ENCANA
<b>Field</b>	HIGH MESA	<b>SIR No.</b>	BAD4-00204
<b>Engineer</b>	JEFF PATTERSON	<b>Job Type</b>	9 5/8" SURFACE
<b>Country</b>	United States	<b>Job Date</b>	10-27-2010



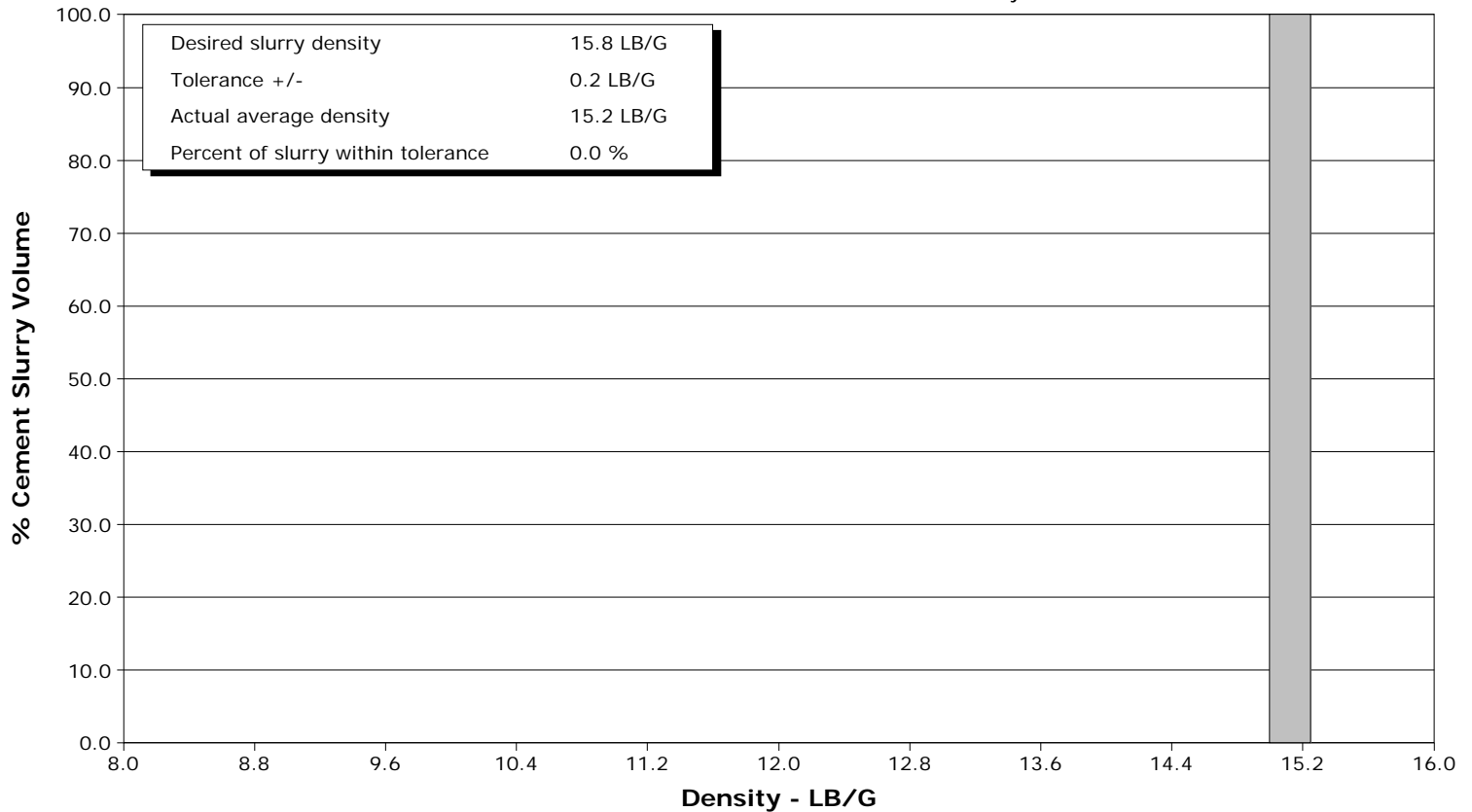
**Well** FEDERAL 25-7BB  
**Field** HIGH MESA  
**Engineer** JEFF PATTERSON  
**Country** United States

**Client** ENCANA  
**SIR No.** BAD4-00204  
**Job Type** 9 5/8" SURFACE  
**Job Date** 10-27-2010

Lead Slurry - 10/27/2010 13:35:52 to 10/27/2010 13:48:45



Tail Slurry - 10/27/2010 13:52:14 to 10/27/2010 13:55:39





# Cementing Service Report

Customer ENCANA				Job Number BAD4-00204						
Well FEDERAL 25-7BB FEDERAL 25-7BB			Location (legal) PH25			Schlumberger Location GRAND JUNCTION, COLORADO		Job Start Oct/27/2010		
Field HIGH MESA		Formation Name/Type SHALE		Deviation 0 deg	Bit Size 12.3 in	Well MD 1163.0 ft		Well TVD 1163.0 ft		
County GARFIELD		State/Province Colorado		BHP	BHST 95 degF	BHCT 81 degF	Pore Press. Gradient			
Well Master 0631162213		API/UWI								
Rig Name ENSIGN 119	Drilled For Gas		Service Via Land		Casing/Liner					
			Depth, ft	Size, in	Weight, lb/ft	Grade	Thread			
Offshore Zone	Well Class New		Well Type Development		1163.0	9.630	36.0	J55	8RD	
			0.0	0.000	0.0					
Drilling Fluid Type		Max. Density	Plastic Viscosity		Tubing/Drill Pipe					
				Depth,	Size,	Weight,	Grade	Thread		
Service Line Cementing	Job Type 9 5/8" SURFACE									
Max. Allowed Tub. Press 3000 psi	Max. Allowed Ann. Press		WH Connection 9 5/8" CEMENT HEAD		Perforations/Open Hole					
				Top,	Bottom,		No. of Shots	Total Interval		
Service Instructions Cement 9 5/8" Surface casing with: 246sx 12.5ppg Lead to surface (80% excess on entire hole) 149sx 15.8ppg Tail (500ft column 0% excess)										
								Diameter		
Treat Down Casing		Displacement 86.0 bbl		Packer Type		Packer Depth				
Tubing Vol.		Casing Vol. 90.0 bbl		Annular Vol. 120.0 bbl		Openhole Vol. 172.0 bbl				
Casing/Tubing Secured <input checked="" type="checkbox"/>		1 Hole Vol. Circulated prior to Cement <input checked="" type="checkbox"/>		Casing Tools			Squeeze Job			
Lift Pressure 575 psi		Shoe Type Guide		Squeeze Type						
Pipe Rotated <input type="checkbox"/>		Pipe Reciprocated <input type="checkbox"/>		Shoe Depth 1163.0 ft			Tool Type			
No. Centralizers		Top Plugs 1	Bottom Plugs		Stage Tool Type			Tool Depth		
Cement Head Type Single		Stage Tool Depth			Tail Pipe Size					
Job Scheduled For Oct/27/2010		Arrived on Location Oct/27/2010		Leave Location Oct/27/2010		Collar Type Float			Tail Pipe Depth	
						Collar Depth 1120.0 ft			Sqz. Total Vol.	
Date	Time 24-hr clock	Treating Pressure PSI	Flow Rate B/M	Density LB/G	Volume BBL	Message				
10/27/2010	11:28:47					Started Acquisition				
10/27/2010	13:21:50	-0	0.0	8.43	0.0					
10/27/2010	13:21:51					Start Job				
10/27/2010	13:21:51	-0	0.0	8.43	0.0					
10/27/2010	13:21:52					Pressure Test Lines				
10/27/2010	13:21:52	-0	0.0	8.43	0.0					
10/27/2010	13:21:54					Low pressure test to 500psi.				
10/27/2010	13:21:54					Good test.				
10/27/2010	13:21:54					High pressure test to 3000psi.				
10/27/2010	13:21:54	3	0.0	8.43	0.0					
10/27/2010	13:21:55					Good test.				
10/27/2010	13:21:55	3	0.0	8.43	0.0					
10/27/2010	13:21:56					Start Pumping Spacer				
10/27/2010	13:21:56	4	0.0	8.43	0.0					
10/27/2010	13:21:57					Pumping 20bbl fresh water spacer.				
10/27/2010	13:21:57	4	0.0	8.43	0.0					
10/27/2010	13:21:58					Good returns.				
10/27/2010	13:21:58	4	0.0	8.43	0.0					
10/27/2010	13:22:17	1	0.0	8.43	0.0					
10/27/2010	13:22:47	2	0.0	8.43	0.0					
10/27/2010	13:23:17	4	0.8	8.45	0.1					

Well FEDERAL 25-7BB FEDERAL 25-7BB			Field HIGH MESA		Job Start Oct/27/2010	Customer ENCANA	Job Number BAD4-00204
Date	Time 24-hr clock	Treating Pressure PSI	Flow Rate B/M	Density LB/G	Volume BBL	Message	
10/27/2010	13:24:17	38	0.5	8.43	2.2		
10/27/2010	13:24:47	36	0.0	8.43	2.2		
10/27/2010	13:25:17	934	0.0	8.43	2.3		
10/27/2010	13:25:47	922	0.0	8.43	2.3		
10/27/2010	13:26:17	925	0.0	8.43	2.3		
10/27/2010	13:26:47	4245	0.0	8.43	2.3		
10/27/2010	13:27:17	4183	0.0	8.43	2.3		
10/27/2010	13:27:47	4176	0.0	8.43	2.3		
10/27/2010	13:28:17	4135	0.0	8.43	2.3		
10/27/2010	13:28:47	8	0.0	8.43	2.3		
10/27/2010	13:29:17	3	0.0	8.43	2.3		
10/27/2010	13:29:47	3	0.0	8.43	2.3		
10/27/2010	13:30:17	2	0.0	8.43	2.3		
10/27/2010	13:30:47	25	2.3	8.43	3.0		
10/27/2010	13:31:17	117	3.8	8.43	4.7		
10/27/2010	13:31:47	228	6.2	8.43	7.3		
10/27/2010	13:32:17	154	4.9	8.43	10.3		
10/27/2010	13:32:47	154	4.9	8.43	12.8		
10/27/2010	13:33:17	159	4.9	8.43	15.2		
10/27/2010	13:33:47	163	4.9	8.43	17.6		
10/27/2010	13:34:17	162	4.9	8.43	20.1		
10/27/2010	13:34:47	166	5.0	12.09	22.5		
10/27/2010	13:35:09						End Spacer
10/27/2010	13:35:09	237	4.9	12.62	24.3		
10/27/2010	13:35:11						Start Cement Slurry
10/27/2010	13:35:11	237	4.9	12.63	24.5		
10/27/2010	13:35:12						Start Mixing Scav Slurry
10/27/2010	13:35:12	237	4.9	12.63	24.5		
10/27/2010	13:35:17	244	4.9	12.62	25.0		
10/27/2010	13:35:23						Mixing and pumping 12.5ppg lead slurry.
10/27/2010	13:35:23	243	4.9	12.62	25.4		
10/27/2010	13:35:24						Good returns.
10/27/2010	13:35:24	251	4.9	12.61	25.5		
10/27/2010	13:35:47	235	4.9	12.58	27.4		
10/27/2010	13:35:51						End Scavenger Slurry
10/27/2010	13:35:51	228	4.9	12.57	27.7		
10/27/2010	13:35:52						Start Mixing Lead Slurry
10/27/2010	13:35:52	233	4.9	12.57	27.8		
10/27/2010	13:36:17	332	6.1	12.55	29.9		
10/27/2010	13:36:47	331	6.3	12.51	33.0		
10/27/2010	13:37:17	319	6.3	12.44	36.2		
10/27/2010	13:37:47	312	6.3	12.43	39.3		
10/27/2010	13:38:17	311	6.3	12.42	42.5		
10/27/2010	13:38:47	303	6.3	12.41	45.6		
10/27/2010	13:39:17	292	6.3	12.46	48.8		
10/27/2010	13:39:47	298	6.3	12.40	51.9		
10/27/2010	13:40:17	294	6.3	12.36	55.1		
10/27/2010	13:40:47	289	6.3	12.45	58.2		
10/27/2010	13:41:17	286	6.3	12.52	61.4		
10/27/2010	13:41:47	290	6.3	12.52	64.5		
10/27/2010	13:42:17	287	6.3	12.51	67.6		
10/27/2010	13:42:47	290	6.3	12.51	70.8		
10/27/2010	13:43:17	292	6.3	12.51	73.9		
10/27/2010	13:43:47	286	6.3	12.52	77.1		

Well FEDERAL 25-7BB FEDERAL 25-7BB			Field HIGH MESA		Job Start Oct/27/2010	Customer ENCANA	Job Number BAD4-00204
Date	Time 24-hr clock	Treating Pressure PSI	Flow Rate B/M	Density LB/G	Volume BBL	Message	
10/27/2010	13:44:47	282	6.3	12.47	83.4		
10/27/2010	13:45:17	292	6.3	12.56	86.6		
10/27/2010	13:45:47	291	6.3	12.53	89.7		
10/27/2010	13:46:17	283	6.3	12.51	92.9		
10/27/2010	13:46:47	290	6.3	12.48	96.0		
10/27/2010	13:47:17	281	6.3	12.44	99.2		
10/27/2010	13:47:47	181	5.2	12.44	102.3		
10/27/2010	13:48:17	177	4.9	12.45	104.8		
10/27/2010	13:48:45						End Lead Slurry
10/27/2010	13:48:45	190	5.0	12.64	107.1		
10/27/2010	13:48:47	191	5.0	12.67	107.2		
10/27/2010	13:49:17	193	4.9	13.00	109.7		
10/27/2010	13:49:47	213	4.9	13.89	112.2		
10/27/2010	13:50:17	234	4.9	14.30	114.6		
10/27/2010	13:50:47	241	4.9	14.75	117.0		
10/27/2010	13:50:58						Pumped 246sks/92bbbls of 12.5ppg lead.
10/27/2010	13:50:58						Good returns.
10/27/2010	13:50:58	245	4.9	14.89	117.9		
10/27/2010	13:51:17	254	4.9	15.16	119.5		
10/27/2010	13:51:47	279	4.9	15.48	121.9		
10/27/2010	13:52:14						Start Mixing Tail Slurry
10/27/2010	13:52:14	406	6.2	15.25	124.6		
10/27/2010	13:52:16						Mixing and pumping 15.8ppg tail slurry.
10/27/2010	13:52:16	405	6.2	15.24	124.8		
10/27/2010	13:52:17						Good returns.
10/27/2010	13:52:17	393	6.2	15.24	124.9		
10/27/2010	13:52:47	416	6.2	15.20	128.0		
10/27/2010	13:53:17	412	6.2	15.23	131.1		
10/27/2010	13:53:47	410	6.2	15.19	134.2		
10/27/2010	13:54:17	403	6.2	15.18	137.3		
10/27/2010	13:54:47	398	6.2	15.20	140.5		
10/27/2010	13:55:17	395	6.2	15.18	143.6		
10/27/2010	13:55:39						End Tail Slurry
10/27/2010	13:55:39	399	6.2	15.17	145.9		
10/27/2010	13:55:40						End Cement Slurry
10/27/2010	13:55:40	116	6.2	15.17	146.0		
10/27/2010	13:55:41						Pumped 149sks/31bbbls of 15.8ppg tail.
10/27/2010	13:55:41						Good returns.
10/27/2010	13:55:41	116	5.6	15.17	146.1		
10/27/2010	13:55:43						Drop Top Plug
10/27/2010	13:55:43	9	4.3	15.19	146.2		
10/27/2010	13:55:44						Start Displacement
10/27/2010	13:55:44	9	2.9	15.21	146.3		
10/27/2010	13:55:46						Displace with fresh water.
10/27/2010	13:55:46						Good returns.
10/27/2010	13:55:46	7	1.7	15.21	146.4		
10/27/2010	13:55:47	1	0.9	15.21	146.4		
10/27/2010	13:56:17	6	0.0	15.14	146.4		
10/27/2010	13:56:47	7	0.0	15.15	146.4		
10/27/2010	13:57:17	7	0.0	15.15	146.4		
10/27/2010	13:57:47	13	0.0	15.15	146.4		
10/27/2010	13:58:17	9	0.0	15.16	146.4		
10/27/2010	13:58:47	9	0.0	15.16	146.4		
10/27/2010	13:59:17	44	0.0	14.26	146.4		

Well FEDERAL 25-7BB FEDERAL 25-7BB			Field HIGH MESA		Job Start Oct/27/2010	Customer ENCANA		Job Number BAD4-00204
Date	Time 24-hr clock	Treating Pressure PSI	Flow Rate B/M	Density LB/G	Volume BBL	Message		
10/27/2010	14:00:17	49	2.7	9.64	148.5			
10/27/2010	14:00:47	42	2.5	9.40	149.8			
10/27/2010	14:01:17	48	2.7	9.17	151.1			
10/27/2010	14:01:47	47	2.8	9.08	152.5			
10/27/2010	14:02:17	48	2.8	8.97	153.9			
10/27/2010	14:02:47	47	2.9	8.83	155.4			
10/27/2010	14:03:17	48	2.9	8.74	156.8			
10/27/2010	14:03:47	46	3.0	8.69	158.3			
10/27/2010	14:04:17	47	3.0	8.68	159.8			
10/27/2010	14:04:47	47	2.9	8.68	161.2			
10/27/2010	14:05:17	46	2.9	8.68	162.7			
10/27/2010	14:05:47	52	2.9	8.68	164.2			
10/27/2010	14:06:17	52	3.1	8.67	165.7			
10/27/2010	14:06:47	43	2.8	8.51	167.2			
10/27/2010	14:07:17	45	2.9	8.47	168.6			
10/27/2010	14:07:47	45	2.9	8.49	170.1			
10/27/2010	14:08:17	50	3.0	8.50	171.5			
10/27/2010	14:08:47	31	2.9	8.48	173.0			
10/27/2010	14:09:17	38	2.9	8.48	174.5			
10/27/2010	14:09:47	47	2.8	8.44	175.9			
10/27/2010	14:10:17	49	2.7	8.45	177.3			
10/27/2010	14:10:47	47	2.6	8.45	178.6			
10/27/2010	14:11:17	47	2.4	8.45	179.9			
10/27/2010	14:11:47	53	2.4	8.44	181.1			
10/27/2010	14:12:17	52	2.2	8.44	182.2			
10/27/2010	14:12:47	43	2.5	8.44	183.4			
10/27/2010	14:13:17	81	3.9	8.44	185.0			
10/27/2010	14:13:47	89	3.9	8.27	186.9			
10/27/2010	14:14:17	100	3.9	8.43	188.9			
10/27/2010	14:14:47	105	3.9	8.42	190.9			
10/27/2010	14:15:17	117	3.9	8.45	192.8			
10/27/2010	14:15:47	120	3.9	8.44	194.8			
10/27/2010	14:15:50					Cement to surface at 40bbbls away of displacement.		
10/27/2010	14:15:50	133	3.9	8.44	195.0			
10/27/2010	14:15:51					Good returns.		
10/27/2010	14:15:51	125	3.9	8.44	195.0			
10/27/2010	14:16:17	144	3.9	8.44	196.7			
10/27/2010	14:16:24					Total cement to surface was 46bbbls.		
10/27/2010	14:16:24	142	3.9	8.44	197.2			
10/27/2010	14:16:47	146	3.9	8.26	198.7			
10/27/2010	14:17:17	161	3.9	8.40	200.6			
10/27/2010	14:17:47	175	3.9	8.42	202.6			
10/27/2010	14:18:17	184	3.8	8.44	204.5			
10/27/2010	14:18:47	186	3.8	8.44	206.4			
10/27/2010	14:19:17	198	3.8	8.44	208.3			
10/27/2010	14:19:47	208	3.8	8.44	210.3			
10/27/2010	14:20:17	213	3.9	8.43	212.2			
10/27/2010	14:20:47	230	3.9	8.44	214.1			
10/27/2010	14:21:17	244	3.8	8.44	216.0			
10/27/2010	14:21:47	252	3.8	8.44	218.0			
10/27/2010	14:22:17	270	3.8	8.44	219.9			
10/27/2010	14:22:47	279	3.8	8.44	221.8			
10/27/2010	14:23:17	292	3.8	8.44	223.7			
10/27/2010	14:23:47	303	3.8	8.44	225.6			

Well FEDERAL 25-7BB FEDERAL 25-7BB			Field HIGH MESA		Job Start Oct/27/2010	Customer ENCANA		Job Number BAD4-00204
Date	Time 24-hr clock	Treating Pressure PSI	Flow Rate B/M	Density LB/G	Volume BBL	Message		
10/27/2010	14:24:47	258	2.2	8.44	228.1			
10/27/2010	14:25:17	265	2.2	8.44	229.2			
10/27/2010	14:25:47	273	2.2	8.44	230.3			
10/27/2010	14:26:17	276	2.2	8.44	231.4			
10/27/2010	14:26:47	290	2.2	8.44	232.5			
10/27/2010	14:27:17	293	2.2	8.44	233.7			
10/27/2010	14:27:47	297	2.2	8.44	234.8			
10/27/2010	14:28:17	312	2.2	8.44	235.9			
10/27/2010	14:28:45					Bump Top Plug		
10/27/2010	14:28:45	959	2.0	8.44	236.9			
10/27/2010	14:28:46					End Displacement		
10/27/2010	14:28:46	959	1.7	8.44	237.0			
10/27/2010	14:28:47	942	1.1	8.44	237.0			
10/27/2010	14:28:48					Bumped plug to 950psi.		
10/27/2010	14:28:48					Total displacement was 86bbls.		
10/27/2010	14:28:48	971	0.6	8.44	237.0			
10/27/2010	14:28:49					Hold pressure for 5minutes.		
10/27/2010	14:28:49					Remark		
10/27/2010	14:28:49	957	0.6	8.44	237.0			
10/27/2010	14:28:50					Bleed off pressure.		
10/27/2010	14:28:50					Check floats.		
10/27/2010	14:28:50	957	0.3	8.44	237.0			
10/27/2010	14:28:51					Floats held .		
10/27/2010	14:28:51	965	0.1	8.44	237.0			
10/27/2010	14:28:57					Got .5bbls back.		
10/27/2010	14:28:57	959	0.0	8.44	237.0			
10/27/2010	14:28:58					Total cement to surface was 46bbls.		
10/27/2010	14:28:58					Good returns for entire job.		
10/27/2010	14:28:58	956	0.0	8.44	237.0			
10/27/2010	14:29:17	955	0.0	8.44	237.0			
10/27/2010	14:29:47	955	0.0	8.44	237.0			
10/27/2010	14:30:17	955	0.0	8.44	237.0			
10/27/2010	14:30:47	955	0.0	8.44	237.0			
10/27/2010	14:31:17	956	0.0	8.44	237.0			
10/27/2010	14:31:47	956	0.0	8.44	237.0			
10/27/2010	14:32:17	956	0.0	8.44	237.0			
10/27/2010	14:32:47	957	0.0	8.44	237.0			
10/27/2010	14:33:17	5	0.0	8.44	237.0			
10/27/2010	14:33:47	3	0.0	8.44	237.2			
10/27/2010	14:34:17	3	0.0	8.44	237.2			
10/27/2010	14:34:47	3	0.0	8.44	237.2			
10/27/2010	14:35:03					End Job		
10/27/2010	14:35:03	3	0.0	8.44	237.2			

<b>Well</b> FEDERAL 25-7BB FEDERAL 25-7BB	<b>Field</b> HIGH MESA	<b>Job Start</b> Oct/27/2010	<b>Customer</b> ENCANA	<b>Job Number</b> BAD4-00204
--	---------------------------	---------------------------------	---------------------------	---------------------------------

### Post Job Summary

Average Pump Rates, bbl/min					Volume of Fluid Injected, bbl			
Slurry 6.0	N2	Mud	Maximum Rate 6.0	Total Slurry 123.0	Mud	Spacer 20.0	N2	
Treating Pressure Summary, psi					Breakdown Fluid			
Maximum 3000	Final 950	Average 300	Bump Plug to 950	Breakdown	Type	Volume	Density	
Avg. N2 Percent	Designed Slurry Volume 123.0 bbl	Displacement 87.0 bbl	Mix Water Temp 50 degF	Cement Circulated to Surface? <input checked="" type="checkbox"/>	Washed Thru Perfs <input type="checkbox"/>	Volume 46.0 bbl	To	
Customer or Authorized Representative TONY KETTERLING			Schlumberger Supervisor JEFF PATTERSON		Circulation Lost <input type="checkbox"/>	Job Completed <input checked="" type="checkbox"/>		
					-		-	