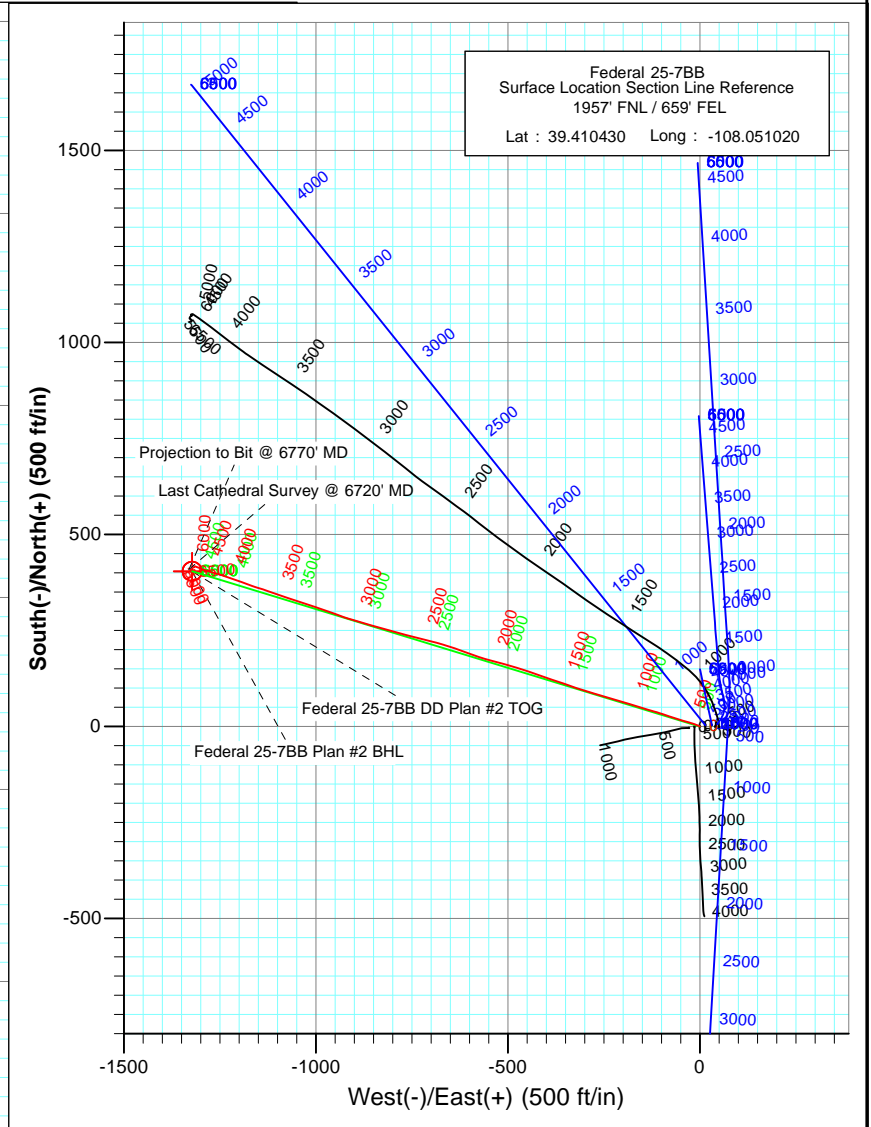
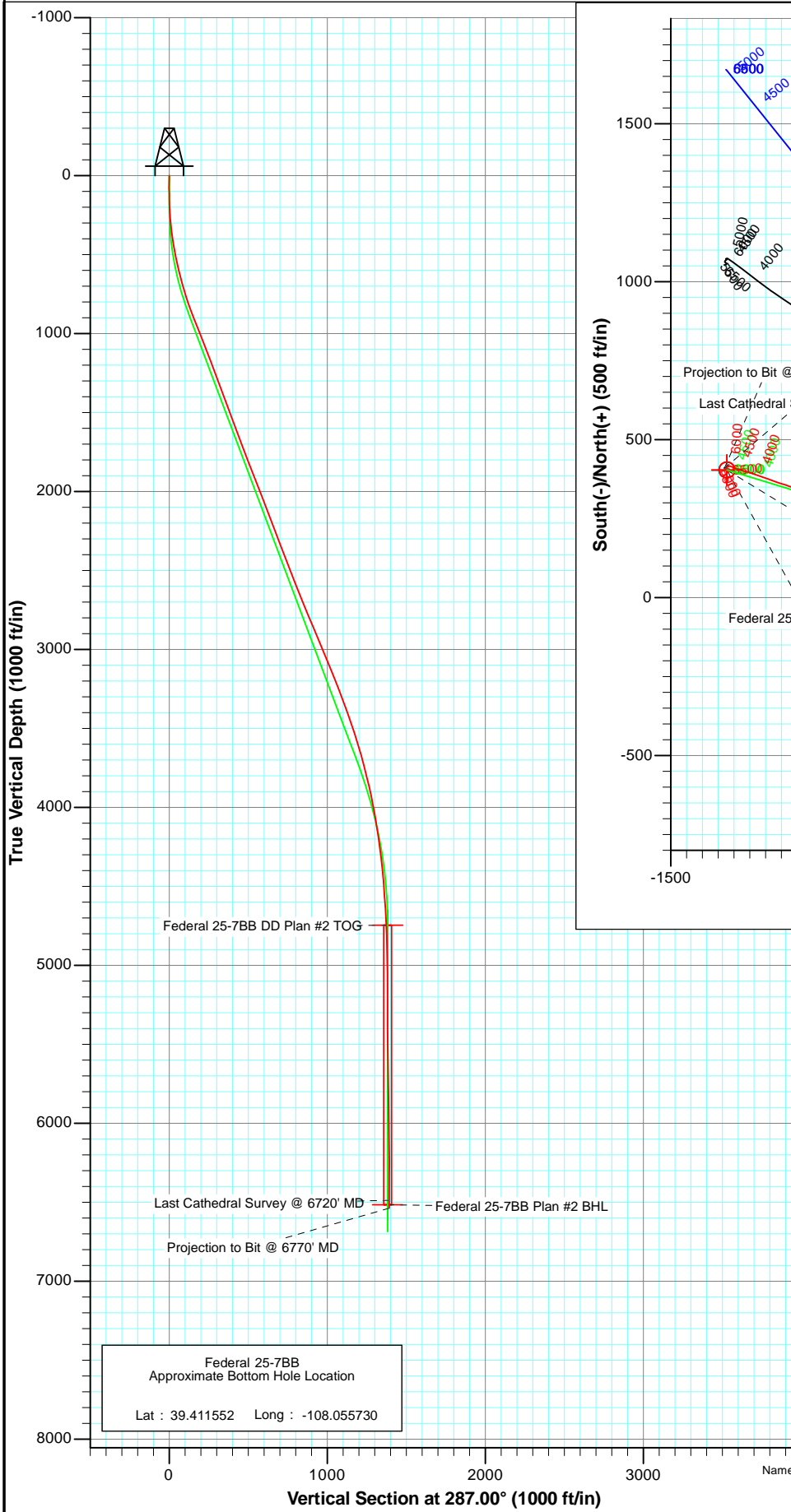




Project: S. Piceance (Parachute)
 Site: SENE Sec25-T7S-R96W (PH-25)
 Well: Federal 25-7BB
 Wellbore: DD
 Plan: FINAL



Azimuths to True North
 Magnetic North: 10.43°
 Magnetic Field
 Strength: 52246.0snT
 Dip Angle: 65.67°
 Date: 12/14/2010
 Model: IGRF2010

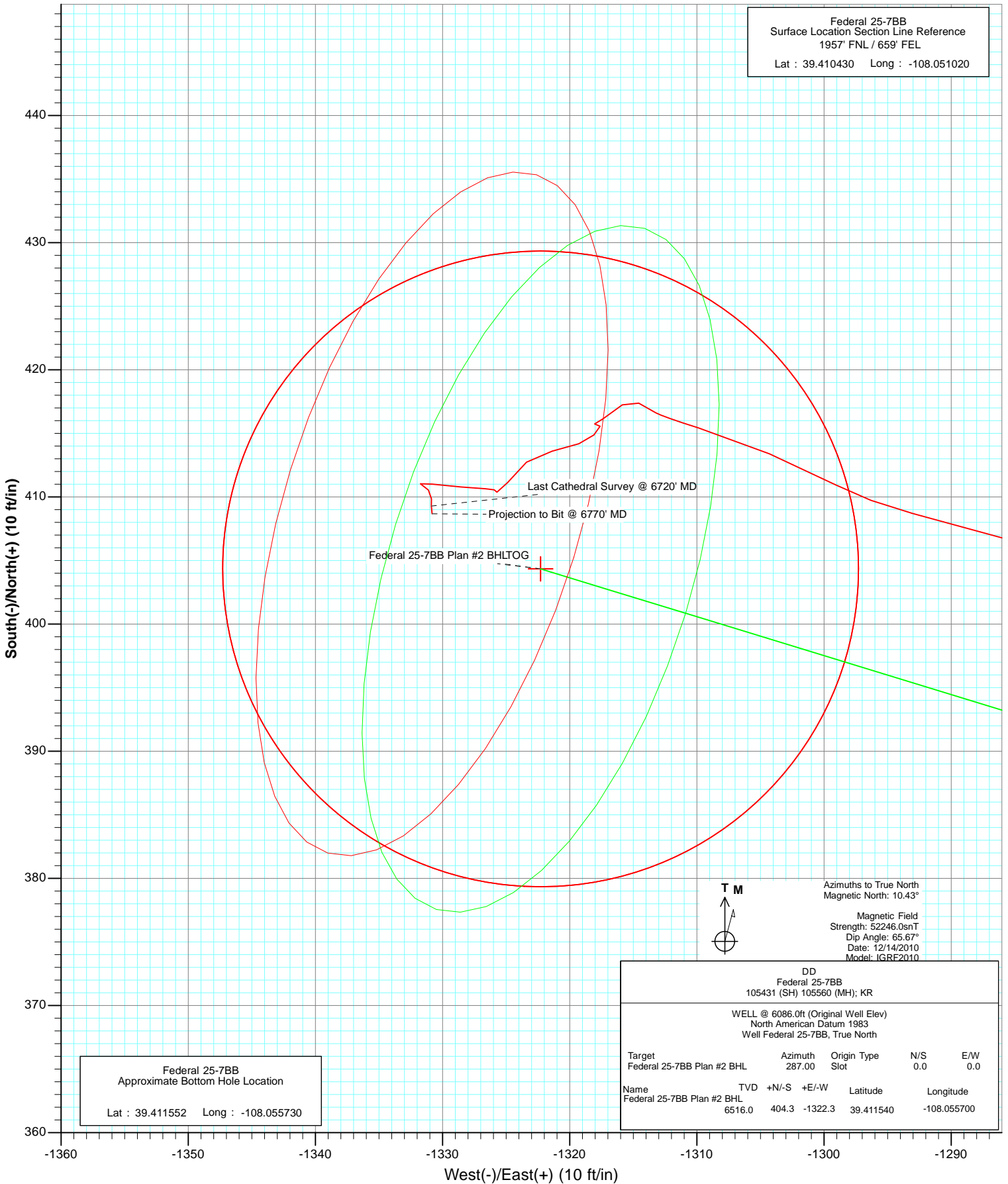
DD Federal 25-7BB 105431 (SH) 105560 (MH); KR					
WELL @ 6086.0ft (Original Well Elev) North American Datum 1983 Well Federal 25-7BB, True North					
Target	Azimuth	Origin Type	N/S	E/W	
Federal 25-7BB Plan #2 BHL	287.00	Slot	0.0	0.0	
	TVD	+N/-S	+E/-W	Latitude	Longitude
Federal 25-7BB Plan #2 BHL	6516.0	404.3	-1322.3	39.411540	-108.055700



Project: S. Piceance (Parachute)
 Site: SENE Sec25-T7S-R96W (PH-25)
 Well: Federal 25-7BB
 Wellbore: DD
 Plan: FINAL



Federal 25-7BB
 Surface Location Section Line Reference
 1957' FNL / 659' FEL
 Lat : 39.410430 Long : -108.051020



Federal 25-7BB
 Approximate Bottom Hole Location
 Lat : 39.411552 Long : -108.055730



Azimuths to True North
 Magnetic North: 10.43°
 Magnetic Field
 Strength: 52246.0snT
 Dip Angle: 65.67°
 Date: 12/14/2010
 Model: IGRF2010

DD Federal 25-7BB 105431 (SH) 105560 (MH); KR					
WELL @ 6086.0ft (Original Well Elev) North American Datum 1983 Well Federal 25-7BB, True North					
Target	Azimuth	Origin Type	N/S	E/W	
Federal 25-7BB Plan #2 BHL	287.00	Slot	0.0	0.0	
Name	TVD	+N/-S	+E/-W	Latitude	Longitude
Federal 25-7BB Plan #2 BHL	6516.0	404.3	-1322.3	39.411540	-108.055700

Survey Report

Company: EnCana Oil & Gas (USA) Inc	Local Co-ordinate Reference: Well Federal 25-7BB
Project: S. Piceance (Parachute)	TVD Reference: WELL @ 6086.0ft (Original Well Elev)
Site: SENE Sec25-T7S-R96W (PH-25)	MD Reference: WELL @ 6086.0ft (Original Well Elev)
Well: Federal 25-7BB	North Reference: True
Wellbore: Final	Survey Calculation Method: Minimum Curvature
Design: DD	Database: EDM 5000.1 US Multi Users DB

Project S. Piceance (Parachute), Garfield County, CO		
Map System: US State Plane 1983	System Datum: Mean Sea Level	
Geo Datum: North American Datum 1983		
Map Zone: Colorado Central Zone		

Site SENE Sec25-T7S-R96W (PH-25)				
Site Position:	Northing: 1,584,503.36 ft	Latitude: 39.410440		
From: Lat/Long	Easting: 2,279,392.91 ft	Longitude: -108.050780		
Position Uncertainty: 0.0 ft	Slot Radius: 0.000 in	Grid Convergence: -1.61 °		

Well Federal 25-7BB				
Well Position	+N/-S 0.0 ft	Northing: 1,584,501.62 ft	Latitude: 39.410430	
	+E/-W 0.0 ft	Easting: 2,279,325.03 ft	Longitude: -108.051020	
Position Uncertainty	0.0 ft	Wellhead Elevation: ft	Ground Level: 6,064.0 ft	

Wellbore Final					
Magnetics	Model Name	Sample Date	Declination (°)	Dip Angle (°)	Field Strength (nT)
	IGRF2010	12/14/2010	10.43	65.67	52,246

Design DD				
Audit Notes:				
Version: 1.0	Phase: ACTUAL	Tie On Depth: 0.0		
Vertical Section:	Depth From (TVD) (ft)	+N/-S (ft)	+E/-W (ft)	Direction (°)
	0.0	0.0	0.0	287.00

Survey Program		Date 12/26/2010		
From (ft)	To (ft)	Survey (Wellbore)	Tool Name	Description
82.0	6,770.0	Survey #1 (Final)	MWD	Geolink MWD

Survey									
Measured Depth (ft)	Inclination (°)	Azimuth (°)	Vertical Depth (ft)	+N/-S (ft)	+E/-W (ft)	Vertical Section (ft)	Dogleg Rate (°/100ft)	Build Rate (°/100ft)	Formations / Comments
0.0	0.00	0.00	0.0	0.0	0.0	0.0	0.00	0.00	
82.0	0.40	22.80	82.0	0.3	0.1	0.0	0.49	0.49	
112.0	0.40	331.50	112.0	0.5	0.1	0.0	1.15	0.00	
142.0	1.10	286.60	142.0	0.6	-0.2	0.4	2.88	2.33	
173.0	1.70	293.20	173.0	0.9	-0.9	1.2	2.00	1.94	
203.0	2.40	293.40	203.0	1.3	-1.9	2.2	2.33	2.33	
233.0	3.50	289.30	232.9	1.9	-3.4	3.8	3.73	3.67	
263.0	4.60	291.30	262.9	2.6	-5.3	5.9	3.70	3.67	
293.0	5.40	290.70	292.7	3.5	-7.8	8.5	2.67	2.67	
323.0	6.30	292.40	322.6	4.7	-10.6	11.5	3.05	3.00	
354.0	7.30	291.80	353.4	6.1	-14.0	15.2	3.23	3.23	
384.0	8.10	289.90	383.1	7.5	-17.8	19.2	2.80	2.67	
414.0	8.70	285.90	412.8	8.8	-22.0	23.6	2.79	2.00	

Survey Report

Company:	EnCana Oil & Gas (USA) Inc	Local Co-ordinate Reference:	Well Federal 25-7BB
Project:	S. Piceance (Parachute)	TD Reference:	WELL @ 6086.0ft (Original Well Elev)
Site:	SENE Sec25-T7S-R96W (PH-25)	MVD Reference:	WELL @ 6086.0ft (Original Well Elev)
Well:	Federal 25-7BB	North Reference:	True
Wellbore:	Final	Survey Calculation Method:	Minimum Curvature
Design:	DD	Database:	EDM 5000.1 US Multi Users DB

Survey									
Measured Depth (ft)	Inclination (°)	Azimuth (°)	Vertical Depth (ft)	+N/-S (ft)	+E/-W (ft)	Vertical Section (ft)	Dogleg Rate (°/100ft)	Build Rate (°/100ft)	Formations / Comments
444.0	9.90	284.30	442.4	10.1	-26.6	28.4	4.09	4.00	
475.0	10.30	286.30	472.9	11.5	-31.9	33.9	1.72	1.29	
565.0	13.00	287.60	561.0	16.8	-49.3	52.0	3.01	3.00	
656.0	13.90	286.80	649.5	23.1	-69.5	73.2	1.01	0.99	
747.0	16.60	289.50	737.3	30.6	-92.2	97.1	3.07	2.97	
838.0	20.00	286.00	823.7	39.2	-119.4	125.7	3.92	3.74	
929.0	21.20	287.10	908.9	48.3	-150.1	157.7	1.39	1.32	
1,020.0	22.00	287.20	993.5	58.2	-182.1	191.2	0.88	0.88	
1,113.0	21.40	286.80	1,079.9	68.3	-215.0	225.6	0.66	-0.65	
1,120.0	21.40	285.60	1,086.4	69.0	-217.4	228.1	6.25	0.00	
1,245.0	20.90	286.90	1,203.0	81.6	-260.7	273.2	0.55	-0.40	
1,338.0	20.00	286.10	1,290.1	90.8	-291.9	305.7	1.01	-0.97	
1,432.0	20.90	289.70	1,378.2	101.0	-323.1	338.5	1.64	0.96	
1,525.0	19.90	288.70	1,465.4	111.6	-353.7	370.9	1.14	-1.08	
1,619.0	20.20	288.80	1,553.7	122.0	-384.3	403.1	0.32	0.32	
1,712.0	21.00	288.40	1,640.7	132.4	-415.3	435.8	0.87	0.86	
1,805.0	20.20	289.70	1,727.8	143.1	-446.2	468.5	0.99	-0.86	
1,898.0	21.10	286.40	1,814.8	153.2	-477.4	501.3	1.58	0.97	
1,991.0	21.90	285.60	1,901.4	162.6	-510.1	535.4	0.92	0.86	
2,085.0	21.10	284.40	1,988.8	171.5	-543.4	569.8	0.97	-0.85	
2,178.0	21.40	289.40	2,075.5	181.3	-575.6	603.5	1.97	0.32	
2,271.0	20.70	289.60	2,162.3	192.5	-607.1	636.9	0.76	-0.75	
2,365.0	20.70	289.30	2,250.2	203.5	-638.5	670.1	0.11	0.00	
2,458.0	20.60	286.30	2,337.3	213.6	-669.7	702.9	1.14	-0.11	
2,552.0	21.60	283.90	2,424.9	222.4	-702.3	736.7	1.41	1.06	
2,645.0	20.60	285.10	2,511.7	230.7	-734.8	770.1	1.17	-1.08	
2,738.0	21.60	283.70	2,598.5	239.1	-767.2	803.6	1.20	1.08	
2,832.0	22.80	285.60	2,685.5	248.1	-801.5	839.0	1.49	1.28	
2,925.0	22.30	286.30	2,771.4	257.9	-835.8	874.7	0.61	-0.54	
3,018.0	22.80	286.70	2,857.3	268.0	-870.0	910.4	0.56	0.54	
3,111.0	22.40	285.20	2,943.1	277.8	-904.4	946.1	0.75	-0.43	
3,205.0	22.90	290.70	3,029.9	289.0	-938.8	982.2	2.31	0.53	
3,298.0	22.50	289.60	3,115.7	301.3	-972.5	1,018.1	0.63	-0.43	
3,392.0	21.60	288.50	3,202.8	312.9	-1,005.8	1,053.3	1.05	-0.96	
3,485.0	20.70	287.90	3,289.6	323.3	-1,037.7	1,086.9	1.00	-0.97	
3,578.0	19.90	288.10	3,376.8	333.3	-1,068.4	1,119.1	0.86	-0.86	
3,672.0	19.20	288.70	3,465.4	343.2	-1,098.2	1,150.6	0.77	-0.74	
3,765.0	17.10	290.30	3,553.7	352.9	-1,125.5	1,179.5	2.32	-2.26	
3,859.0	16.30	286.30	3,643.8	361.4	-1,151.2	1,206.5	1.49	-0.85	
3,952.0	14.80	291.30	3,733.4	369.4	-1,174.8	1,231.4	2.16	-1.61	
4,046.0	13.80	288.70	3,824.5	377.3	-1,196.6	1,254.6	1.26	-1.06	
4,139.0	12.30	288.90	3,915.1	384.1	-1,216.4	1,275.6	1.61	-1.61	
4,232.0	10.20	289.30	4,006.3	390.0	-1,233.6	1,293.7	2.26	-2.26	
4,326.0	9.30	287.70	4,098.9	395.1	-1,248.7	1,309.6	1.00	-0.96	
4,419.0	8.90	284.70	4,190.7	399.2	-1,262.8	1,324.3	0.67	-0.43	
4,512.0	6.50	292.10	4,282.9	403.0	-1,274.6	1,336.8	2.79	-2.58	
4,606.0	6.40	285.60	4,376.3	406.4	-1,284.6	1,347.3	0.78	-0.11	
4,699.0	4.40	284.80	4,468.9	408.7	-1,293.1	1,356.1	2.15	-2.15	
4,793.0	3.50	297.50	4,562.7	411.0	-1,299.1	1,362.5	1.33	-0.96	
4,886.0	3.60	292.70	4,655.5	413.4	-1,304.3	1,368.2	0.34	0.11	
4,979.0	3.70	287.50	4,748.3	415.4	-1,309.9	1,374.1	0.37	0.11	
5,072.0	0.70	300.70	4,841.2	416.6	-1,313.2	1,377.6	3.25	-3.23	
5,166.0	1.20	298.00	4,935.2	417.4	-1,314.6	1,379.2	0.53	0.53	

Survey Report

Company: EnCana Oil & Gas (USA) Inc	Local Co-ordinate Reference: Well Federal 25-7BB
Project: S. Piceance (Parachute)	TVD Reference: WELL @ 6086.0ft (Original Well Elev)
Site: SENE Sec25-T7S-R96W (PH-25)	MD Reference: WELL @ 6086.0ft (Original Well Elev)
Well: Federal 25-7BB	North Reference: True
Wellbore: Final	Survey Calculation Method: Minimum Curvature
Design: DD	Database: EDM 5000.1 US Multi Users DB

Survey									
Measured Depth (ft)	Inclination (°)	Azimuth (°)	Vertical Depth (ft)	+N/-S (ft)	+E/-W (ft)	Vertical Section (ft)	Dogleg Rate (°/100ft)	Build Rate (°/100ft)	Formations / Comments
5,259.0	0.90	216.30	5,028.2	417.2	-1,315.9	1,380.4	1.50	-0.32	
5,352.0	1.50	244.70	5,121.2	416.1	-1,317.4	1,381.5	0.89	0.65	
5,446.0	0.60	73.50	5,215.2	415.7	-1,318.0	1,382.0	2.23	-0.96	
5,539.0	0.40	187.10	5,308.2	415.6	-1,317.6	1,381.5	0.91	-0.22	
5,633.0	0.70	230.90	5,402.1	414.9	-1,318.1	1,381.8	0.53	0.32	
5,726.0	1.00	245.90	5,495.1	414.2	-1,319.3	1,382.7	0.40	0.32	
5,819.0	1.70	259.70	5,588.1	413.6	-1,321.4	1,384.6	0.82	0.75	
5,913.0	1.10	226.60	5,682.1	412.7	-1,323.4	1,386.2	1.05	-0.64	
6,006.0	1.60	220.00	5,775.1	411.1	-1,324.9	1,387.2	0.56	0.54	
6,099.0	0.30	0.80	5,868.0	410.4	-1,325.7	1,387.8	1.98	-1.40	
6,192.0	1.10	271.60	5,961.0	410.6	-1,326.6	1,388.7	1.22	0.86	
6,285.0	1.30	276.20	6,054.0	410.8	-1,328.5	1,390.6	0.24	0.22	
6,379.0	1.50	275.50	6,148.0	411.0	-1,330.8	1,392.8	0.21	0.21	
6,472.0	0.40	108.70	6,241.0	411.0	-1,331.7	1,393.7	2.03	-1.18	
6,566.0	0.60	140.00	6,335.0	410.5	-1,331.1	1,393.0	0.35	0.21	
6,659.0	0.40	193.00	6,428.0	409.9	-1,330.9	1,392.5	0.52	-0.22	
6,720.0	0.70	174.50	6,489.0	409.3	-1,330.9	1,392.4	0.57	0.49	Last Cathedral Survey @ 6720' MD
6,770.0	0.70	174.50	6,539.0	408.7	-1,330.8	1,392.2	0.00	0.00	Projection to Bit @ 6770' MD

Targets									
Target Name	Dip Angle (°)	Dip Dir. (°)	TVD (ft)	+N/-S (ft)	+E/-W (ft)	Northing (ft)	Easting (ft)	Latitude	Longitude
Federal 25-7BB Plan #2 - hit/miss target - Shape	0.00	0.00	6,516.0	404.3	-1,322.3	1,584,942.92	2,278,014.62	39.411540	-108.055700
- actual wellpath misses target center by 9.7ft at 6747.1ft MD (6516.1 TVD, 409.0 N, -1330.8 E)									
- Circle (radius 25.0)									
Federal 25-7BB DD Plar - actual wellpath misses target center by 16.7ft at 4977.2ft MD (4746.5 TVD, 415.4 N, -1309.7 E)	0.00	0.00	4,746.0	404.3	-1,322.3	1,584,942.92	2,278,014.62	39.411540	-108.055700
- Point									

Design Annotations					
Measured Depth (ft)	Vertical Depth (ft)	Local Coordinates		Comment	
		+N/-S (ft)	+E/-W (ft)		
6,720.0	6,489.0	409.3	-1,330.9	Last Cathedral Survey @ 6720' MD	
6,770.0	6,539.0	408.7	-1,330.8	Projection to Bit @ 6770' MD	

Checked By: _____ Approved By: _____ Date: _____