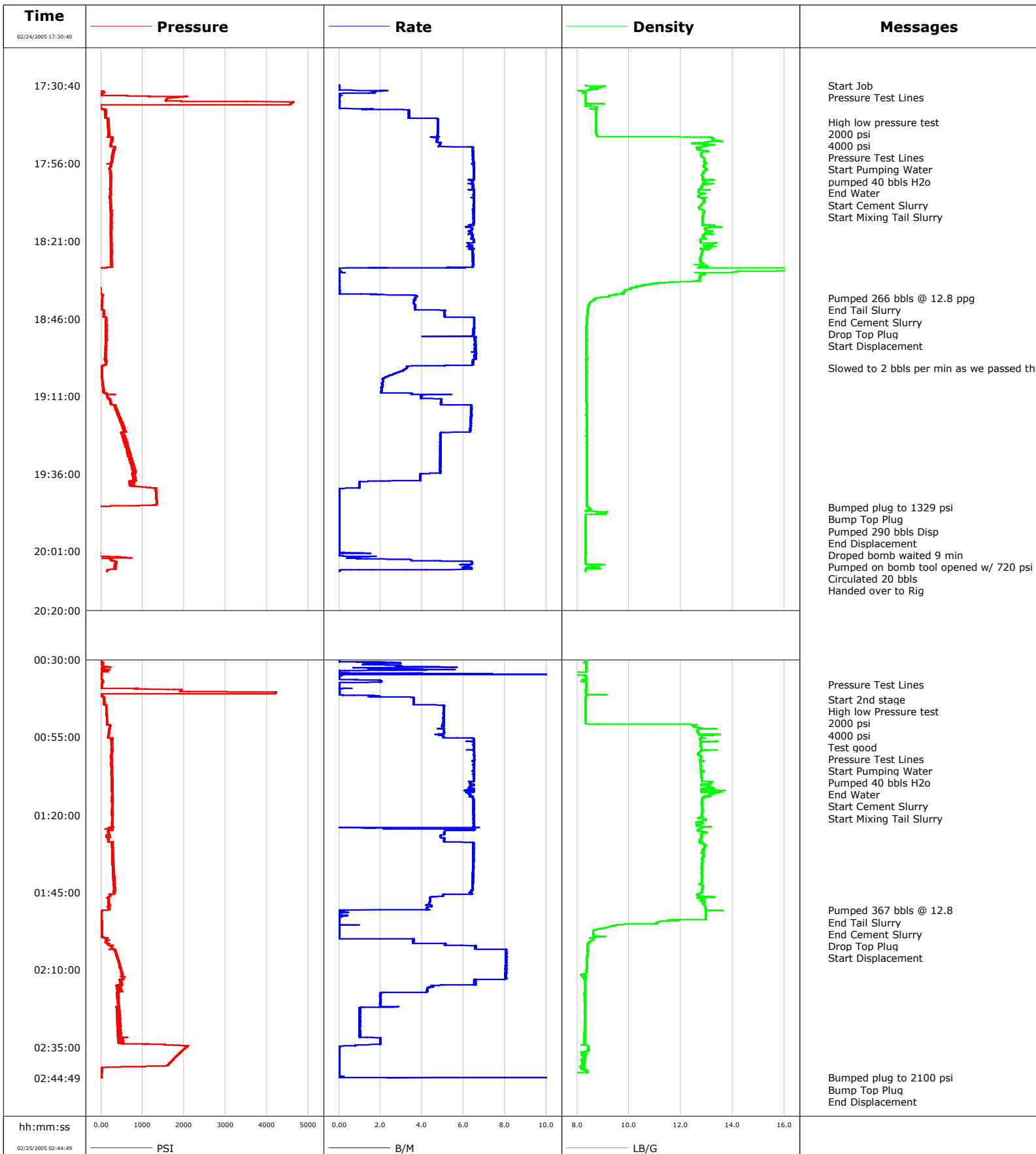


Well	RGU 414-24-198	Client	Williams
Field	Ryan Gulch	SIR No.	
Engineer		Job Type	
Country	United States	Job Date	12-19-2009



Well			Field		Job Start	Customer	Job Number
RGU 414-24-198			Rayn Gluch		Dec/19/2009	Williams	306945
Date	Time 24-hr clock	Treating Pressure PSI	Flow Rate B/M	Density LB/G	Volume BBL	Message	
02/24/2005	17:39:40	112	3.4	8.73	5.7		
02/24/2005	17:40:10	130	3.4	8.73	7.3		
02/24/2005	17:40:40	107	3.4	8.74	9.0		
02/24/2005	17:41:10	102	3.4	8.74	10.7		
02/24/2005	17:41:40	175	4.8	8.73	12.7		
02/24/2005	17:42:10	169	4.8	8.73	15.1		
02/24/2005	17:42:35					High low pressure test	
02/24/2005	17:42:35					2000 psi	
02/24/2005	17:42:35					4000 psi	
02/24/2005	17:42:35	163	4.8	8.73	17.1		
02/24/2005	17:42:40	185	4.8	8.73	17.5		
02/24/2005	17:42:41					Pressure Test Lines	
02/24/2005	17:42:41	163	4.8	8.73	17.5		
02/24/2005	17:42:44					Start Pumping Water	
02/24/2005	17:42:44	159	4.8	8.73	17.8		
02/24/2005	17:43:10	165	4.8	8.73	19.8		
02/24/2005	17:43:40	175	4.8	8.73	22.2		
02/24/2005	17:44:10	174	4.8	8.73	24.6		
02/24/2005	17:44:40	165	4.8	8.73	27.0		
02/24/2005	17:45:10	197	4.8	8.73	29.4		
02/24/2005	17:45:40	183	4.8	8.73	31.8		
02/24/2005	17:46:10	180	4.8	8.72	34.1		
02/24/2005	17:46:40	195	4.8	8.74	36.5		
02/24/2005	17:47:10	207	4.7	8.77	38.9		
02/24/2005	17:47:31					pumped 40 bbls H2o	
02/24/2005	17:47:31	232	4.4	13.08	40.5		
02/24/2005	17:47:34					End Water	
02/24/2005	17:47:34	264	4.6	13.18	40.8		
02/24/2005	17:47:38					Start Cement Slurry	
02/24/2005	17:47:38	244	4.7	13.14	41.1		
02/24/2005	17:47:40	253	4.7	13.16	41.2		
02/24/2005	17:48:10	266	4.7	13.24	43.6		
02/24/2005	17:48:40	262	4.7	13.45	46.0		
02/24/2005	17:49:10	270	4.7	12.95	48.3		
02/24/2005	17:49:21					Start Mixing Tail Slurry	
02/24/2005	17:49:21	245	4.9	12.62	49.2		
02/24/2005	17:49:40	230	4.9	12.66	50.8		
02/24/2005	17:50:10	233	4.8	12.99	53.2		
02/24/2005	17:50:40	341	6.3	12.79	55.7		
02/24/2005	17:51:10	326	6.4	12.71	58.9		
02/24/2005	17:51:40	321	6.5	12.76	62.1		
02/24/2005	17:52:10	302	6.5	13.08	65.3		
02/24/2005	17:52:40	311	6.5	12.79	68.6		
02/24/2005	17:53:10	264	6.5	12.78	71.8		
02/24/2005	17:53:40	292	6.5	12.80	75.0		
02/24/2005	17:54:10	291	6.5	12.86	78.3		
02/24/2005	17:54:40	268	6.5	12.90	81.5		
02/24/2005	17:55:10	256	6.5	12.91	84.7		
02/24/2005	17:55:40	245	6.5	12.93	88.0		
02/24/2005	17:56:10	235	6.5	12.92	91.2		
02/24/2005	17:56:40	243	6.5	12.90	94.4		
02/24/2005	17:57:10	225	6.5	12.87	97.7		
02/24/2005	17:57:40	199	6.5	12.98	100.9		
02/24/2005	17:58:10	215	6.5	12.95	104.2		

Well			Field		Job Start	Customer	Job Number
RGU 414-24-198			Rayn Gluch		Dec/19/2009	Williams	306945
Date	Time 24-hr clock	Treating Pressure PSI	Flow Rate B/M	Density LB/G	Volume BBL	Message	
02/24/2005	17:59:10	234	6.5	12.86	110.7		
02/24/2005	17:59:40	221	6.5	12.81	113.9		
02/24/2005	18:00:10	230	6.5	12.83	117.2		
02/24/2005	18:00:40	240	6.5	12.85	120.4		
02/24/2005	18:01:10	233	6.5	12.85	123.6		
02/24/2005	18:01:40	233	6.4	12.96	126.8		
02/24/2005	18:02:10	217	6.4	12.88	130.1		
02/24/2005	18:02:40	245	6.5	12.82	133.3		
02/24/2005	18:03:10	227	6.5	12.82	136.5		
02/24/2005	18:03:40	242	6.5	12.80	139.7		
02/24/2005	18:04:10	224	6.4	12.76	142.9		
02/24/2005	18:04:40	222	6.5	12.68	146.2		
02/24/2005	18:05:10	221	6.5	12.68	149.4		
02/24/2005	18:05:40	244	6.5	12.94	152.7		
02/24/2005	18:06:10	227	6.5	12.72	155.9		
02/24/2005	18:06:40	210	6.5	12.66	159.1		
02/24/2005	18:07:10	211	6.5	12.80	162.4		
02/24/2005	18:07:40	221	6.5	12.90	165.6		
02/24/2005	18:08:10	242	6.5	12.88	168.9		
02/24/2005	18:08:40	228	6.5	12.86	172.1		
02/24/2005	18:09:10	230	6.5	12.82	175.4		
02/24/2005	18:09:40	227	6.5	12.76	178.6		
02/24/2005	18:10:10	237	6.5	12.69	181.9		
02/24/2005	18:10:40	224	6.5	12.74	185.1		
02/24/2005	18:11:10	241	6.5	12.88	188.3		
02/24/2005	18:11:40	241	6.5	12.89	191.6		
02/24/2005	18:12:10	256	6.5	12.87	194.8		
02/24/2005	18:12:40	239	6.5	12.86	198.0		
02/24/2005	18:13:10	252	6.5	12.84	201.3		
02/24/2005	18:13:40	241	6.5	12.83	204.5		
02/24/2005	18:14:10	246	6.5	12.83	207.8		
02/24/2005	18:14:40	254	6.5	12.85	211.0		
02/24/2005	18:15:10	251	6.5	12.85	214.3		
02/24/2005	18:15:40	245	6.5	12.83	217.5		
02/24/2005	18:16:10	238	6.3	13.14	220.7		
02/24/2005	18:16:40	238	6.3	13.09	223.8		
02/24/2005	18:17:10	243	6.4	12.92	227.0		
02/24/2005	18:17:40	231	6.4	12.98	230.2		
02/24/2005	18:18:10	247	6.3	13.12	233.4		
02/24/2005	18:18:40	242	6.3	13.16	236.6		
02/24/2005	18:19:10	244	6.4	12.89	239.7		
02/24/2005	18:19:40	246	6.4	12.84	242.9		
02/24/2005	18:20:10	239	6.4	12.96	246.2		
02/24/2005	18:20:40	242	6.5	12.75	249.4		
02/24/2005	18:21:10	257	6.5	12.76	252.6		
02/24/2005	18:21:40	255	6.2	13.38	255.8		
02/24/2005	18:22:10	250	6.3	13.20	259.0		
02/24/2005	18:22:40	250	6.4	12.90	262.2		
02/24/2005	18:23:10	243	6.4	12.97	265.3		
02/24/2005	18:23:40	239	6.3	13.11	268.5		
02/24/2005	18:24:10	245	6.4	12.83	271.8		
02/24/2005	18:24:40	243	6.4	12.82	275.0		
02/24/2005	18:25:10	248	6.5	12.80	278.2		
02/24/2005	18:25:40	246	6.5	12.80	281.4		

Well			Field		Job Start	Customer	Job Number
RGU 414-24-198			Rayn Gluch		Dec/19/2009	Williams	306945
Date	Time 24-hr clock	Treating Pressure PSI	Flow Rate B/M	Density LB/G	Volume BBL	Message	
02/24/2005	18:26:40	247	6.5	12.74	287.9		
02/24/2005	18:27:10	247	6.5	12.73	291.1		
02/24/2005	18:27:40	249	6.4	12.78	294.3		
02/24/2005	18:28:10	244	6.5	12.87	297.6		
02/24/2005	18:28:40	249	6.5	12.72	300.8		
02/24/2005	18:29:10	247	6.4	12.98	304.0		
02/24/2005	18:29:40	15	1.7	18.93	306.9		
02/24/2005	18:30:10	-31	0.0	18.46	306.9		
02/24/2005	18:30:40	-31	0.0	15.75	306.9		
02/24/2005	18:31:10	-30	0.0	13.96	307.0		
02/24/2005	18:31:40	-30	0.0	12.90	307.0		
02/24/2005	18:32:10	-30	0.0	12.73	307.0		
02/24/2005	18:32:40	-31	0.0	12.74	307.0		
02/24/2005	18:33:10	-28	0.0	12.73	307.0		
02/24/2005	18:33:40	-27	0.0	12.71	307.0		
02/24/2005	18:34:10	-24	0.0	12.04	307.0		
02/24/2005	18:34:40	-25	0.0	11.11	307.0		
02/24/2005	18:35:10	-25	0.0	10.62	307.0		
02/24/2005	18:35:40	-25	0.0	10.25	307.0		
02/24/2005	18:36:10	-24	0.0	10.04	307.0		
02/24/2005	18:36:40	-23	0.0	9.95	307.0		
02/24/2005	18:37:10	-23	0.0	9.84	307.0		
02/24/2005	18:37:40	-24	0.0	9.77	307.0		
02/24/2005	18:38:10	18	1.8	9.46	307.1		
02/24/2005	18:38:40	34	3.7	9.26	308.5		
02/24/2005	18:39:10	29	3.7	8.91	310.4		
02/24/2005	18:39:26					Pumped 266 bbls @ 12.8 ppg	
02/24/2005	18:39:26	31	3.7	8.74	311.4		
02/24/2005	18:39:31					End Tail Slurry	
02/24/2005	18:39:31	31	3.7	8.72	311.7		
02/24/2005	18:39:34					End Cement Slurry	
02/24/2005	18:39:34	32	3.7	8.70	311.9		
02/24/2005	18:39:37					Drop Top Plug	
02/24/2005	18:39:37	32	3.7	8.68	312.0		
02/24/2005	18:39:39					Start Displacement	
02/24/2005	18:39:39	35	3.7	8.67	312.2		
02/24/2005	18:39:40	30	3.7	8.66	312.2		
02/24/2005	18:40:10	23	3.6	8.62	314.0		
02/24/2005	18:40:40	28	3.6	8.52	315.9		
02/24/2005	18:41:10	26	3.6	8.47	317.7		
02/24/2005	18:41:40	22	3.7	8.44	319.5		
02/24/2005	18:42:10	24	3.7	8.43	321.3		
02/24/2005	18:42:40	21	3.6	8.42	323.1		
02/24/2005	18:43:10	21	3.6	8.42	325.0		
02/24/2005	18:43:40	63	5.1	8.41	327.4		
02/24/2005	18:44:10	66	5.1	8.40	329.9		
02/24/2005	18:44:40	67	5.1	8.39	332.5		
02/24/2005	18:45:10	64	5.1	8.38	335.0		
02/24/2005	18:45:40	126	6.5	8.38	337.7		
02/24/2005	18:46:10	130	6.5	8.37	340.9		
02/24/2005	18:46:40	116	6.5	8.37	344.2		
02/24/2005	18:47:10	131	6.5	8.36	347.5		
02/24/2005	18:47:40	115	6.5	8.36	350.7		
02/24/2005	18:48:10	120	6.5	8.36	354.0		

Well			Field		Job Start	Customer	Job Number
RGU 414-24-198			Rayn Gluch		Dec/19/2009	Williams	306945
Date	Time 24-hr clock	Treating Pressure PSI	Flow Rate B/M	Density LB/G	Volume BBL	Message	
02/24/2005	18:49:10	123	6.5	8.36	360.5		
02/24/2005	18:49:40	118	6.5	8.36	363.7		
02/24/2005	18:50:10	124	6.5	8.36	367.0		
02/24/2005	18:50:40	127	6.5	8.36	370.2		
02/24/2005	18:51:10	114	6.5	8.35	373.5		
02/24/2005	18:51:40	125	6.5	8.36	376.7		
02/24/2005	18:52:10	124	6.6	8.35	379.9		
02/24/2005	18:52:40	125	6.6	8.35	383.2		
02/24/2005	18:53:10	110	6.6	8.37	386.5		
02/24/2005	18:53:40	110	6.6	8.36	389.8		
02/24/2005	18:54:10	113	6.6	8.35	393.0		
02/24/2005	18:54:40	126	6.6	8.35	396.3		
02/24/2005	18:55:10	112	6.6	8.35	399.6		
02/24/2005	18:55:40	109	6.6	8.35	402.9		
02/24/2005	18:56:10	112	6.6	8.35	406.2		
02/24/2005	18:56:40	129	6.6	8.35	409.5		
02/24/2005	18:57:10	118	6.6	8.35	412.7		
02/24/2005	18:57:40	106	6.5	8.35	416.0		
02/24/2005	18:58:10	108	6.5	8.35	419.3		
02/24/2005	18:58:40	108	6.6	8.36	422.6		
02/24/2005	18:59:10	115	6.6	8.35	425.9		
02/24/2005	18:59:40	115	6.5	8.35	429.1		
02/24/2005	19:00:10	112	6.5	8.36	432.3		
02/24/2005	19:00:40	118	6.5	8.36	435.5		
02/24/2005	19:01:10	73	5.1	8.36	438.6		
02/24/2005	19:01:40	19	3.3	8.36	440.5		
02/24/2005	19:01:55					Slowed to 2 bbls per min as we passed through the DV	
02/24/2005	19:01:55	19	3.3	8.36	441.3		
02/24/2005	19:02:10	19	3.2	8.36	442.1		
02/24/2005	19:02:40	20	3.1	8.36	443.7		
02/24/2005	19:03:10	21	2.9	8.37	445.2		
02/24/2005	19:03:40	22	2.7	8.36	446.6		
02/24/2005	19:04:10	22	2.5	8.36	447.9		
02/24/2005	19:04:40	23	2.3	8.36	449.1		
02/24/2005	19:05:10	24	2.2	8.36	450.3		
02/24/2005	19:05:40	25	2.1	8.36	451.3		
02/24/2005	19:06:10	31	2.1	8.36	452.4		
02/24/2005	19:06:40	33	2.1	8.36	453.4		
02/24/2005	19:07:10	43	2.1	8.36	454.5		
02/24/2005	19:07:40	52	2.1	8.36	455.5		
02/24/2005	19:08:10	58	2.1	8.36	456.5		
02/24/2005	19:08:40	45	2.1	8.36	457.6		
02/24/2005	19:09:10	71	2.1	8.36	458.6		
02/24/2005	19:09:40	69	2.0	8.36	459.6		
02/24/2005	19:10:10	116	3.5	8.36	460.8		
02/24/2005	19:10:40	142	4.0	8.36	462.8		
02/24/2005	19:11:10	160	3.9	8.36	464.8		
02/24/2005	19:11:40	158	4.0	8.36	466.7		
02/24/2005	19:12:10	215	4.9	8.36	469.0		
02/24/2005	19:12:40	221	4.9	8.36	471.5		
02/24/2005	19:13:10	241	4.9	8.36	473.9		
02/24/2005	19:13:40	231	4.9	8.36	476.4		
02/24/2005	19:14:10	350	6.4	8.36	479.3		
02/24/2005	19:14:40	349	6.4	8.36	482.5		

Well			Field		Job Start	Customer	Job Number
RGU 414-24-198			Rayn Gluch		Dec/19/2009	Williams	306945
Date	Time 24-hr clock	Treating Pressure PSI	Flow Rate B/M	Density LB/G	Volume BBL	Message	
02/24/2005	19:15:40	392	6.4	8.36	488.9		
02/24/2005	19:16:10	392	6.3	8.36	492.1		
02/24/2005	19:16:40	403	6.4	8.36	495.3		
02/24/2005	19:17:10	433	6.4	8.36	498.5		
02/24/2005	19:17:40	421	6.4	8.36	501.7		
02/24/2005	19:18:10	432	6.4	8.36	504.8		
02/24/2005	19:18:40	483	6.4	8.36	508.0		
02/24/2005	19:19:10	483	6.3	8.36	511.2		
02/24/2005	19:19:40	471	6.4	8.36	514.4		
02/24/2005	19:20:10	532	6.4	8.36	517.5		
02/24/2005	19:20:40	530	6.4	8.36	520.7		
02/24/2005	19:21:10	527	6.3	8.36	523.9		
02/24/2005	19:21:40	539	6.3	8.36	527.1		
02/24/2005	19:22:10	545	6.3	8.36	530.2		
02/24/2005	19:22:40	514	6.3	8.36	533.4		
02/24/2005	19:23:10	542	4.9	8.36	535.9		
02/24/2005	19:23:40	558	4.9	8.36	538.3		
02/24/2005	19:24:10	536	4.9	8.36	540.8		
02/24/2005	19:24:40	558	4.9	8.37	543.2		
02/24/2005	19:25:10	562	4.9	8.37	545.6		
02/24/2005	19:25:40	555	4.9	8.36	548.1		
02/24/2005	19:26:10	633	4.9	8.36	550.5		
02/24/2005	19:26:40	657	4.9	8.37	553.0		
02/24/2005	19:27:10	594	4.9	8.37	555.4		
02/24/2005	19:27:40	634	4.9	8.37	557.9		
02/24/2005	19:28:10	654	4.9	8.37	560.3		
02/24/2005	19:28:40	626	4.9	8.37	562.7		
02/24/2005	19:29:10	644	4.9	8.37	565.2		
02/24/2005	19:29:40	710	4.9	8.37	567.6		
02/24/2005	19:30:10	695	4.9	8.36	570.1		
02/24/2005	19:30:40	719	4.9	8.37	572.5		
02/24/2005	19:31:10	710	4.9	8.37	574.9		
02/24/2005	19:31:40	700	4.9	8.37	577.4		
02/24/2005	19:32:10	736	4.9	8.37	579.8		
02/24/2005	19:32:40	767	4.9	8.37	582.3		
02/24/2005	19:33:10	750	4.9	8.37	584.7		
02/24/2005	19:33:40	785	4.9	8.37	587.1		
02/24/2005	19:34:10	816	4.9	8.37	589.6		
02/24/2005	19:34:40	746	4.9	8.37	592.0		
02/24/2005	19:35:10	775	4.9	8.37	594.5		
02/24/2005	19:35:40	837	4.9	8.37	596.9		
02/24/2005	19:36:10	750	3.9	8.37	599.1		
02/24/2005	19:36:40	777	3.9	8.37	601.1		
02/24/2005	19:37:10	835	3.9	8.37	603.1		
02/24/2005	19:37:40	815	3.9	8.37	605.0		
02/24/2005	19:38:10	814	3.9	8.37	607.0		
02/24/2005	19:38:40	695	1.0	8.37	608.1		
02/24/2005	19:39:10	700	1.0	8.37	608.6		
02/24/2005	19:39:40	706	1.0	8.37	609.1		
02/24/2005	19:40:10	861	1.0	8.37	609.6		
02/24/2005	19:40:40	1256	1.0	8.37	610.1		
02/24/2005	19:41:10	1324	0.0	8.37	610.1		
02/24/2005	19:41:40	1322	0.0	8.37	610.1		
02/24/2005	19:42:10	1325	0.0	8.37	610.1		

Well			Field		Job Start	Customer	Job Number
RGU 414-24-198			Rayn Gluch		Dec/19/2009	Williams	306945
Date	Time 24-hr clock	Treating Pressure PSI	Flow Rate B/M	Density LB/G	Volume BBL	Message	
02/24/2005	19:43:10	1328	0.0	8.37	610.1		
02/24/2005	19:43:40	1330	0.0	8.37	610.1		
02/24/2005	19:44:10	1332	0.0	8.37	610.1		
02/24/2005	19:44:40	1334	0.0	8.37	610.1		
02/24/2005	19:45:10	1337	0.0	8.37	610.1		
02/24/2005	19:45:40	1338	0.0	8.37	610.1		
02/24/2005	19:46:10	1282	0.0	8.37	610.1		
02/24/2005	19:46:40	-28	0.0	8.39	610.1		
02/24/2005	19:46:52					Bumped plug to 1329 psi	
02/24/2005	19:46:52	-31	0.0	8.39	610.1		
02/24/2005	19:46:57					Bump Top Plug	
02/24/2005	19:46:57	-31	0.0	8.40	610.1		
02/24/2005	19:46:59					Pumped 290 bbls Disp	
02/24/2005	19:46:59	-31	0.0	8.41	610.1		
02/24/2005	19:47:02					End Displacement	
02/24/2005	19:47:02	-31	0.0	8.46	610.1		
02/24/2005	19:47:04					Dropped bomb waited 9 min	
02/24/2005	19:47:04	-31	0.0	8.47	610.1		
02/24/2005	19:47:05					Pumped on bomb tool opened w/ 720 psi	
02/24/2005	19:47:05					Circulated 20 bbls	
02/24/2005	19:47:05					Handed over to Rig	
02/24/2005	19:47:05	-31	0.0	8.47	610.1		
02/24/2005	19:47:10	-31	0.0	8.48	610.1		
02/24/2005	19:47:40	-31	0.0	8.53	610.1		
02/24/2005	19:48:10	-31	0.0	8.33	610.1		
02/24/2005	19:48:40	-32	0.0	8.97	610.1		
02/24/2005	19:49:10	-32	0.0	8.34	610.1		
02/24/2005	19:49:40	-32	0.0	8.33	610.1		
02/24/2005	19:50:10	-32	0.0	8.33	610.1		
02/24/2005	19:50:40	-32	0.0	8.33	610.1		
02/24/2005	19:51:10	-32	0.0	8.33	610.1		
02/24/2005	19:51:40	-33	0.0	8.33	610.1		
02/24/2005	19:52:10	-33	0.0	8.33	610.1		
02/24/2005	19:52:40	-33	0.0	8.33	610.1		
02/24/2005	19:53:10	-33	0.0	8.33	610.1		
02/24/2005	19:53:40	-33	0.0	8.33	610.1		
02/24/2005	19:54:10	-33	0.0	8.33	610.1		
02/24/2005	19:54:40	-33	0.0	8.33	610.1		
02/24/2005	19:55:10	-33	0.0	8.33	610.1		
02/24/2005	19:55:40	-34	0.0	8.33	610.1		
02/24/2005	19:56:10	-34	0.0	8.33	610.1		
02/24/2005	19:56:40	-34	0.0	8.33	610.1		
02/24/2005	19:57:10	-34	0.0	8.34	610.1		
02/24/2005	19:57:40	-34	0.0	8.33	610.1		
02/24/2005	19:58:10	-34	0.0	8.33	610.1		
02/24/2005	19:58:40	-34	0.0	8.34	610.1		
02/24/2005	19:59:10	-34	0.0	8.34	610.1		
02/24/2005	19:59:40	-34	0.0	8.34	610.1		
02/24/2005	20:00:10	-34	0.0	8.34	610.1		
02/24/2005	20:00:40	-35	0.0	8.34	610.1		
02/24/2005	20:01:10	-34	0.0	8.34	610.1		
02/24/2005	20:01:40	-25	1.5	8.35	610.3		
02/24/2005	20:02:10	-34	0.0	8.33	610.4		
02/24/2005	20:02:40	40	1.5	8.33	610.4		

Well		Field		Job Start	Customer	Job Number
RGU 414-24-198		Rayn Gluch		Dec/19/2009	Williams	306945
Date	Time 24-hr clock	Treating Pressure PSI	Flow Rate B/M	Density LB/G	Volume BBL	Message
02/24/2005	20:03:40	231	3.2	8.32	611.6	
02/24/2005	20:04:10	280	4.9	8.33	613.4	
02/24/2005	20:04:40	384	6.4	8.34	616.5	
02/24/2005	20:05:10	351	6.4	8.51	619.7	
02/24/2005	20:05:40	336	6.2	8.56	622.8	
02/24/2005	20:06:10	361	6.1	8.75	625.9	
02/24/2005	20:06:40	348	6.3	8.53	628.9	
02/24/2005	20:07:10	154	0.0	8.33	630.8	
02/24/2005	23:52:10	0	0.0	0.00	630.8	
02/24/2005	23:52:40	0	0.0	0.00	630.8	
02/24/2005	23:53:10	0	0.0	0.00	630.8	
02/24/2005	23:53:40	0	0.0	0.00	630.8	
02/24/2005	23:54:10	0	0.0	0.00	630.8	
02/24/2005	23:54:40	0	0.0	0.00	630.8	
02/24/2005	23:55:10	0	0.0	0.00	630.8	
02/24/2005	23:55:40	0	0.0	0.00	630.8	
02/24/2005	23:56:10	0	0.0	0.00	630.8	
02/24/2005	23:56:40	0	0.0	0.00	630.8	
02/24/2005	23:57:10	0	0.0	0.00	630.8	
02/24/2005	23:57:40	0	0.0	0.00	630.8	
02/24/2005	23:58:10	0	0.0	0.00	630.8	
02/24/2005	23:58:40	0	0.0	0.00	630.8	
02/24/2005	23:59:10	0	0.0	0.00	630.8	
02/24/2005	23:59:40	0	0.0	0.00	630.8	
02/25/2005	00:00:10	0	0.0	0.00	630.8	
02/25/2005	00:00:40	0	0.0	0.00	630.8	
02/25/2005	00:01:10	0	0.0	0.00	630.8	
02/25/2005	00:01:40	0	0.0	0.00	630.8	
02/25/2005	00:02:10	0	0.0	0.00	630.8	
02/25/2005	00:02:40	0	0.0	0.00	630.8	
02/25/2005	00:03:10	0	0.0	0.00	630.8	
02/25/2005	00:03:40	0	0.0	0.00	630.8	
02/25/2005	00:04:10	0	0.0	0.00	630.8	
02/25/2005	00:04:40	0	0.0	0.00	630.8	
02/25/2005	00:05:10	0	0.0	0.00	630.8	
02/25/2005	00:05:40	0	0.0	0.00	630.8	
02/25/2005	00:06:10	0	0.0	0.00	630.8	
02/25/2005	00:06:40	0	0.0	0.00	630.8	
02/25/2005	00:07:10	0	0.0	0.00	630.8	
02/25/2005	00:07:40	0	0.0	0.00	630.8	
02/25/2005	00:08:10	0	0.0	0.00	630.8	
02/25/2005	00:08:40	0	0.3	0.12	630.8	
02/25/2005	00:09:10	0	0.2	0.13	631.0	
02/25/2005	00:09:40	0	0.3	0.13	631.1	
02/25/2005	00:10:10	31	0.2	0.13	631.2	
02/25/2005	00:10:40	31	0.2	0.13	631.3	
02/25/2005	00:11:10	31	0.3	0.13	631.5	
02/25/2005	00:11:40	31	0.2	0.13	631.6	
02/25/2005	00:12:10	31	0.2	0.12	631.7	
02/25/2005	00:12:40	30	0.2	0.13	631.8	
02/25/2005	00:13:10	30	0.2	0.13	631.9	
02/25/2005	00:13:40	30	0.2	0.13	632.0	
02/25/2005	00:14:10	30	0.2	0.12	632.1	
02/25/2005	00:14:40	30	0.2	0.13	632.2	

Well			Field		Job Start	Customer	Job Number
RGU 414-24-198			Rayn Gluch		Dec/19/2009	Williams	306945
Date	Time 24-hr clock	Treating Pressure PSI	Flow Rate B/M	Density LB/G	Volume BBL	Message	
02/25/2005	00:15:40	30	0.3	0.13	632.5		
02/25/2005	00:16:10	30	0.3	0.13	632.6		
02/25/2005	00:16:40	29	0.3	0.13	632.7		
02/25/2005	00:17:10	30	0.3	0.13	632.9		
02/25/2005	00:17:40	29	0.3	0.12	633.0		
02/25/2005	00:18:10	30	0.3	0.12	633.2		
02/25/2005	00:18:40	29	0.3	0.11	633.3		
02/25/2005	00:19:10	30	0.3	0.11	633.5		
02/25/2005	00:19:40	29	0.3	0.12	633.7		
02/25/2005	00:20:10	29	0.3	0.13	633.8		
02/25/2005	00:20:40	29	0.3	0.13	634.0		
02/25/2005	00:21:10	29	0.3	0.13	634.1		
02/25/2005	00:21:40	29	0.3	0.13	634.3		
02/25/2005	00:22:10	29	0.3	0.13	634.4		
02/25/2005	00:22:40	29	0.3	0.13	634.6		
02/25/2005	00:23:10	29	0.3	0.13	634.7		
02/25/2005	00:23:40	29	0.3	0.13	634.9		
02/25/2005	00:24:10	29	0.3	0.13	635.0		
02/25/2005	00:24:40	29	0.3	0.14	635.2		
02/25/2005	00:25:10	29	0.2	0.17	635.3		
02/25/2005	00:25:40	29	0.1	0.30	635.4		
02/25/2005	00:26:10	28	1.9	0.01	636.0		
02/25/2005	00:26:40	29	2.4	0.01	637.0		
02/25/2005	00:27:10	29	2.4	0.01	638.1		
02/25/2005	00:27:40	32	0.2	8.39	639.2		
02/25/2005	00:28:10	33	0.3	7.87	639.4		
02/25/2005	00:28:40	0	0.1	8.35	640.0		
02/25/2005	00:29:10	0	0.0	8.36	640.0		
02/25/2005	00:29:40	-1	0.0	8.35	640.0		
02/25/2005	00:30:10	0	0.0	8.35	640.0		
02/25/2005	00:30:40	-1	0.0	8.35	640.0		
02/25/2005	00:31:10	53	2.9	8.34	641.0		
02/25/2005	00:31:40	24	1.7	8.35	641.8		
02/25/2005	00:32:10	58	2.9	8.35	643.2		
02/25/2005	00:32:40	12	1.7	8.35	644.9		
02/25/2005	00:33:10	99	4.0	8.35	646.3		
02/25/2005	00:33:40	17	0.0	8.36	647.6		
02/25/2005	00:34:10	10	0.0	4.02	647.6		
02/25/2005	00:34:40	8	3.6	2.64	648.3		
02/25/2005	00:35:10	5	0.2	8.34	650.8		
02/25/2005	00:35:40	4	0.0	8.34	650.9		
02/25/2005	00:36:10	1	0.0	8.35	650.9		
02/25/2005	00:36:40	36	1.9	8.35	651.2		
02/25/2005	00:37:10	49	2.0	8.29	652.2		
02/25/2005	00:37:40	25	0.0	8.35	652.6		
02/25/2005	00:37:59					Pressure Test Lines	
02/25/2005	00:37:59	22	0.0	8.34	652.6		
02/25/2005	00:38:10	20	0.0	8.34	652.6		
02/25/2005	00:38:40	17	0.0	8.34	652.6		
02/25/2005	00:39:10	15	0.0	8.34	652.6		
02/25/2005	00:39:40	1764	0.0	8.34	652.6		
02/25/2005	00:40:10	1917	0.0	8.34	652.6		
02/25/2005	00:40:40	4221	0.0	8.34	652.6		
02/25/2005	00:41:10	5	0.0	8.34	652.6		

Well			Field		Job Start	Customer	Job Number
RGU 414-24-198			Rayn Gluch		Dec/19/2009	Williams	306945
Date	Time 24-hr clock	Treating Pressure PSI	Flow Rate B/M	Density LB/G	Volume BBL	Message	
02/25/2005	00:42:10	67	3.6	8.34	653.9		
02/25/2005	00:42:40	72	3.6	8.34	655.7		
02/25/2005	00:42:48					Start 2nd stage	
02/25/2005	00:42:48					High low Pressure test	
02/25/2005	00:42:48	79	3.6	8.34	656.2		
02/25/2005	00:42:49					2000 psi	
02/25/2005	00:42:49					4000 psi	
02/25/2005	00:42:49					Test good	
02/25/2005	00:42:49	67	3.6	8.34	656.2		
02/25/2005	00:42:55					Pressure Test Lines	
02/25/2005	00:42:55	79	3.6	8.34	656.6		
02/25/2005	00:43:01					Start Pumping Water	
02/25/2005	00:43:01	79	3.6	8.34	657.0		
02/25/2005	00:43:10	70	3.6	8.34	657.5		
02/25/2005	00:43:40	69	3.6	8.34	659.3		
02/25/2005	00:44:10	85	3.6	8.34	661.1		
02/25/2005	00:44:40	129	4.7	8.34	662.9		
02/25/2005	00:45:10	124	5.1	8.34	665.4		
02/25/2005	00:45:40	122	5.0	8.34	667.9		
02/25/2005	00:46:10	127	5.0	8.34	670.5		
02/25/2005	00:46:40	128	5.0	8.34	673.0		
02/25/2005	00:47:10	128	5.0	8.33	675.5		
02/25/2005	00:47:40	129	5.0	8.34	678.0		
02/25/2005	00:48:10	133	5.0	8.33	680.5		
02/25/2005	00:48:40	134	5.0	8.33	683.0		
02/25/2005	00:49:10	139	5.0	8.33	685.6		
02/25/2005	00:49:40	136	5.0	8.33	688.1		
02/25/2005	00:50:10	135	5.0	8.33	690.6		
02/25/2005	00:50:40	144	5.0	8.33	693.1		
02/25/2005	00:51:10	213	5.0	12.53	695.6		
02/25/2005	00:51:12					Pumped 40 bbls H2o	
02/25/2005	00:51:12	136	5.0	12.50	695.8		
02/25/2005	00:51:26					End Water	
02/25/2005	00:51:26	207	5.0	12.46	697.0		
02/25/2005	00:51:28					Start Cement Slurry	
02/25/2005	00:51:28	215	5.0	12.46	697.1		
02/25/2005	00:51:40	205	5.0	12.52	698.1		
02/25/2005	00:52:10	207	5.0	12.85	700.7		
02/25/2005	00:52:40	197	5.1	12.66	703.1		
02/25/2005	00:53:10	193	5.1	12.62	705.7		
02/25/2005	00:53:40	188	5.1	12.67	708.2		
02/25/2005	00:54:10	193	4.6	13.45	710.7		
02/25/2005	00:54:40	172	5.0	12.82	713.2		
02/25/2005	00:54:56					Start Mixing Tail Slurry	
02/25/2005	00:54:56	173	5.0	12.79	714.5		
02/25/2005	00:55:10	168	5.0	12.81	715.7		
02/25/2005	00:55:40	262	6.5	12.74	718.8		
02/25/2005	00:56:10	254	6.5	12.76	722.0		
02/25/2005	00:56:40	256	6.5	12.76	725.2		
02/25/2005	00:57:10	258	6.5	12.76	728.5		
02/25/2005	00:57:40	270	6.5	12.76	731.7		
02/25/2005	00:58:10	263	6.5	12.78	735.0		
02/25/2005	00:58:40	267	6.5	12.79	738.2		
02/25/2005	00:59:10	248	6.3	13.43	741.5		

Well			Field		Job Start	Customer	Job Number
RGU 414-24-198			Rayn Gluch		Dec/19/2009	Williams	306945
Date	Time 24-hr clock	Treating Pressure PSI	Flow Rate B/M	Density LB/G	Volume BBL	Message	
02/25/2005	01:00:10	251	6.5	12.68	748.0		
02/25/2005	01:00:40	252	6.5	12.67	751.2		
02/25/2005	01:01:10	243	6.5	12.77	754.5		
02/25/2005	01:01:40	243	6.5	12.78	757.7		
02/25/2005	01:02:10	244	6.5	12.75	761.0		
02/25/2005	01:02:40	255	6.4	12.87	764.3		
02/25/2005	01:03:10	246	6.5	12.77	767.5		
02/25/2005	01:03:40	252	6.5	12.77	770.8		
02/25/2005	01:04:10	239	6.5	12.76	774.0		
02/25/2005	01:04:40	259	6.5	12.78	777.3		
02/25/2005	01:05:10	258	6.5	12.78	780.5		
02/25/2005	01:05:40	257	6.5	12.78	783.8		
02/25/2005	01:06:10	264	6.5	12.77	787.0		
02/25/2005	01:06:40	246	6.5	12.79	790.3		
02/25/2005	01:07:10	255	6.5	12.80	793.5		
02/25/2005	01:07:40	266	6.5	12.79	796.8		
02/25/2005	01:08:10	259	6.5	12.80	800.0		
02/25/2005	01:08:40	277	6.5	12.80	803.3		
02/25/2005	01:09:10	270	6.5	12.80	806.5		
02/25/2005	01:09:40	268	6.4	13.06	809.7		
02/25/2005	01:10:10	281	6.3	13.17	812.9		
02/25/2005	01:10:40	265	6.4	12.90	816.1		
02/25/2005	01:11:10	271	6.3	13.06	819.3		
02/25/2005	01:11:40	267	6.3	13.22	822.5		
02/25/2005	01:12:10	266	6.0	13.68	825.7		
02/25/2005	01:12:40	266	6.2	13.50	828.8		
02/25/2005	01:13:10	278	6.3	13.15	832.0		
02/25/2005	01:13:40	266	6.3	13.17	835.1		
02/25/2005	01:14:10	266	6.4	12.90	838.3		
02/25/2005	01:14:40	274	6.5	12.83	841.5		
02/25/2005	01:15:10	269	6.5	12.80	844.7		
02/25/2005	01:15:40	264	6.5	12.81	848.0		
02/25/2005	01:16:10	281	6.5	12.80	851.2		
02/25/2005	01:16:40	270	6.5	12.83	854.4		
02/25/2005	01:17:10	268	6.5	12.81	857.7		
02/25/2005	01:17:40	285	6.5	12.82	860.9		
02/25/2005	01:18:10	268	6.5	12.82	864.2		
02/25/2005	01:18:40	272	6.5	12.83	867.4		
02/25/2005	01:19:10	285	6.5	12.82	870.6		
02/25/2005	01:19:40	275	6.5	12.81	873.9		
02/25/2005	01:20:10	268	6.5	12.79	877.1		
02/25/2005	01:20:40	288	6.5	12.84	880.3		
02/25/2005	01:21:10	271	6.5	12.73	883.6		
02/25/2005	01:21:40	270	6.5	12.96	886.8		
02/25/2005	01:22:10	274	6.5	12.83	890.1		
02/25/2005	01:22:40	272	6.5	12.74	893.3		
02/25/2005	01:23:10	267	6.5	12.71	896.5		
02/25/2005	01:23:40	265	6.5	12.62	899.8		
02/25/2005	01:24:10	280	6.7	12.82	903.0		
02/25/2005	01:24:40	264	3.4	12.75	904.1		
02/25/2005	01:25:10	171	5.3	12.66	907.3		
02/25/2005	01:25:40	179	5.1	12.96	909.8		
02/25/2005	01:26:10	189	5.1	12.81	912.3		
02/25/2005	01:26:40	148	4.9	12.79	914.9		

Well			Field		Job Start	Customer	Job Number
RGU 414-24-198			Rayn Gluch		Dec/19/2009	Williams	306945
Date	Time 24-hr clock	Treating Pressure PSI	Flow Rate B/M	Density LB/G	Volume BBL	Message	
02/25/2005	01:27:40	174	5.1	12.77	919.8		
02/25/2005	01:28:10	177	5.1	12.72	922.3		
02/25/2005	01:28:40	179	5.1	12.80	924.8		
02/25/2005	01:29:10	272	6.5	12.76	927.8		
02/25/2005	01:29:40	270	6.5	12.90	931.0		
02/25/2005	01:30:10	280	6.5	12.95	934.3		
02/25/2005	01:30:40	270	6.5	12.90	937.5		
02/25/2005	01:31:10	279	6.5	12.88	940.7		
02/25/2005	01:31:40	269	6.5	12.88	944.0		
02/25/2005	01:32:10	276	6.5	12.87	947.2		
02/25/2005	01:32:40	281	6.5	12.85	950.5		
02/25/2005	01:33:10	276	6.5	12.86	953.7		
02/25/2005	01:33:40	281	6.5	12.85	956.9		
02/25/2005	01:34:10	277	6.5	12.82	960.2		
02/25/2005	01:34:40	285	6.5	12.82	963.4		
02/25/2005	01:35:10	279	6.5	12.82	966.6		
02/25/2005	01:35:40	292	6.5	12.81	969.9		
02/25/2005	01:36:10	278	6.5	12.81	973.1		
02/25/2005	01:36:40	285	6.5	12.81	976.3		
02/25/2005	01:37:10	297	6.5	12.79	979.6		
02/25/2005	01:37:40	290	6.5	12.82	982.8		
02/25/2005	01:38:10	287	6.5	12.82	986.0		
02/25/2005	01:38:40	314	6.5	12.80	989.3		
02/25/2005	01:39:10	296	6.5	12.82	992.5		
02/25/2005	01:39:40	314	6.5	12.81	995.7		
02/25/2005	01:40:10	323	6.5	12.82	999.0		
02/25/2005	01:40:40	296	6.5	12.81	1002.2		
02/25/2005	01:41:10	328	6.5	12.81	1005.4		
02/25/2005	01:41:40	319	6.5	12.81	1008.6		
02/25/2005	01:42:10	314	6.5	12.78	1011.9		
02/25/2005	01:42:40	328	6.5	12.78	1015.1		
02/25/2005	01:43:10	324	6.5	12.85	1018.3		
02/25/2005	01:43:40	310	6.4	12.83	1021.5		
02/25/2005	01:44:10	348	6.4	12.81	1024.8		
02/25/2005	01:44:40	305	6.4	12.82	1028.0		
02/25/2005	01:45:10	312	6.3	12.81	1031.1		
02/25/2005	01:45:40	218	5.6	12.65	1034.3		
02/25/2005	01:46:10	217	5.0	12.75	1036.8		
02/25/2005	01:46:40	179	4.4	13.20	1039.2		
02/25/2005	01:47:10	191	4.4	12.88	1041.4		
02/25/2005	01:47:40	186	4.4	12.81	1043.6		
02/25/2005	01:48:10	185	4.4	12.93	1045.8		
02/25/2005	01:48:40	200	4.4	12.86	1048.0		
02/25/2005	01:49:10	188	4.2	12.90	1050.1		
02/25/2005	01:49:40	186	4.4	12.95	1052.3		
02/25/2005	01:50:10	186	4.2	12.95	1054.5		
02/25/2005	01:50:40	189	4.2	12.95	1056.6		
02/25/2005	01:50:45					Pumped 367 bbls @ 12.8	
02/25/2005	01:50:45	142	0.0	12.95	1056.8		
02/25/2005	01:51:03					End Tail Slurry	
02/25/2005	01:51:03	22	0.0	12.99	1056.8		
02/25/2005	01:51:05					End Cement Slurry	
02/25/2005	01:51:05	20	0.0	12.96	1056.8		
02/25/2005	01:51:09					Drop Top Plug	

Well			Field		Job Start	Customer	Job Number
RGU 414-24-198			Rayn Gluch		Dec/19/2009	Williams	306945
Date	Time 24-hr clock	Treating Pressure PSI	Flow Rate B/M	Density LB/G	Volume BBL	Message	
02/25/2005	01:51:10					Start Displacement	
02/25/2005	01:51:10	16	0.0	12.95	1056.8		
02/25/2005	01:51:40	9	0.2	12.95	1056.9		
02/25/2005	01:52:10	8	0.0	12.96	1057.0		
02/25/2005	01:52:40	7	0.4	12.96	1057.0		
02/25/2005	01:53:10	7	0.0	12.96	1057.1		
02/25/2005	01:53:40	7	0.0	12.96	1057.1		
02/25/2005	01:54:10	12	0.0	11.92	1057.1		
02/25/2005	01:54:40	12	0.0	11.11	1057.1		
02/25/2005	01:55:10	12	0.0	11.03	1057.1		
02/25/2005	01:55:40	13	0.0	9.50	1057.1		
02/25/2005	01:56:10	13	0.0	9.24	1057.1		
02/25/2005	01:56:40	13	0.0	8.97	1057.1		
02/25/2005	01:57:10	13	0.0	8.69	1057.1		
02/25/2005	01:57:40	13	0.0	8.61	1057.1		
02/25/2005	01:58:10	13	0.0	8.61	1057.1		
02/25/2005	01:58:40	13	0.0	8.62	1057.1		
02/25/2005	01:59:10	11	0.0	8.70	1057.1		
02/25/2005	01:59:40	73	0.0	8.53	1057.1		
02/25/2005	02:00:10	147	3.6	8.62	1057.7		
02/25/2005	02:00:40	130	3.5	8.55	1059.5		
02/25/2005	02:01:10	145	3.6	8.45	1061.2		
02/25/2005	02:01:40	185	5.1	8.41	1063.3		
02/25/2005	02:02:10	189	5.1	8.41	1065.9		
02/25/2005	02:02:40	260	6.6	8.41	1069.1		
02/25/2005	02:03:10	266	6.6	8.40	1072.4		
02/25/2005	02:03:40	339	8.0	8.40	1076.0		
02/25/2005	02:04:10	344	8.0	8.40	1080.1		
02/25/2005	02:04:40	360	8.0	8.40	1084.1		
02/25/2005	02:05:10	379	8.0	8.40	1088.1		
02/25/2005	02:05:40	387	8.0	8.38	1092.1		
02/25/2005	02:06:10	399	8.0	8.38	1096.1		
02/25/2005	02:06:40	421	8.0	8.38	1100.2		
02/25/2005	02:07:10	431	8.0	8.37	1104.2		
02/25/2005	02:07:40	427	8.0	8.38	1108.2		
02/25/2005	02:08:10	431	8.0	8.38	1112.2		
02/25/2005	02:08:40	445	8.1	8.38	1116.3		
02/25/2005	02:09:10	457	8.0	8.37	1120.3		
02/25/2005	02:09:40	464	8.0	8.37	1124.3		
02/25/2005	02:10:10	475	8.0	8.36	1128.3		
02/25/2005	02:10:40	495	8.0	8.36	1132.4		
02/25/2005	02:11:10	506	8.0	8.36	1136.4		
02/25/2005	02:11:40	511	8.0	8.26	1140.4		
02/25/2005	02:12:10	528	8.0	8.24	1144.4		
02/25/2005	02:12:40	512	8.0	8.34	1148.4		
02/25/2005	02:13:10	472	6.5	8.29	1152.4		
02/25/2005	02:13:40	463	6.5	8.32	1155.7		
02/25/2005	02:14:10	494	6.5	8.32	1158.9		
02/25/2005	02:14:40	480	6.6	8.32	1162.2		
02/25/2005	02:15:10	463	4.5	8.31	1164.9		
02/25/2005	02:15:40	410	4.3	8.33	1167.2		
02/25/2005	02:16:10	375	4.2	8.32	1169.3		
02/25/2005	02:16:40	447	4.2	8.31	1171.4		
02/25/2005	02:17:10	407	4.2	8.32	1173.6		

Well			Field		Job Start	Customer	Job Number
RGU 414-24-198			Rayn Gluch		Dec/19/2009	Williams	306945
Date	Time 24-hr clock	Treating Pressure PSI	Flow Rate B/M	Density LB/G	Volume BBL	Message	
02/25/2005	02:18:10	430	2.0	8.28	1175.8		
02/25/2005	02:18:40	432	2.0	8.31	1176.8		
02/25/2005	02:19:10	399	2.0	8.30	1177.8		
02/25/2005	02:19:40	396	2.0	8.31	1178.8		
02/25/2005	02:20:10	400	2.0	8.30	1179.8		
02/25/2005	02:20:40	429	2.0	8.33	1180.8		
02/25/2005	02:21:10	425	2.0	8.32	1181.8		
02/25/2005	02:21:40	415	2.0	8.31	1182.8		
02/25/2005	02:22:10	440	1.0	8.32	1183.7		
02/25/2005	02:22:40	457	1.0	8.31	1184.2		
02/25/2005	02:23:10	383	1.0	8.30	1184.7		
02/25/2005	02:23:40	389	1.0	8.31	1185.2		
02/25/2005	02:24:10	392	1.0	8.30	1185.7		
02/25/2005	02:24:40	404	1.0	8.30	1186.2		
02/25/2005	02:25:10	450	1.0	8.31	1186.7		
02/25/2005	02:25:40	421	1.0	8.30	1187.2		
02/25/2005	02:26:10	410	1.0	8.30	1187.7		
02/25/2005	02:26:40	426	1.0	8.30	1188.2		
02/25/2005	02:27:10	391	1.0	8.31	1188.7		
02/25/2005	02:27:40	470	1.0	8.30	1189.2		
02/25/2005	02:28:10	479	1.0	8.30	1189.7		
02/25/2005	02:28:40	466	1.0	8.30	1190.2		
02/25/2005	02:29:10	395	1.0	8.29	1190.7		
02/25/2005	02:29:40	400	1.0	8.29	1191.2		
02/25/2005	02:30:10	423	1.0	8.29	1191.7		
02/25/2005	02:30:40	442	1.0	8.30	1192.2		
02/25/2005	02:31:10	447	1.0	8.28	1192.7		
02/25/2005	02:31:40	439	1.0	8.29	1193.2		
02/25/2005	02:32:10	424	2.0	8.28	1193.9		
02/25/2005	02:32:40	412	2.0	8.28	1194.9		
02/25/2005	02:33:10	424	2.0	8.29	1195.9		
02/25/2005	02:33:40	524	2.0	8.29	1196.9		
02/25/2005	02:34:10	1540	1.0	8.21	1197.9		
02/25/2005	02:34:40	2091	0.0	8.42	1198.2		
02/25/2005	02:35:10	2039	0.0	8.43	1198.2		
02/25/2005	02:35:40	1992	0.0	8.44	1198.2		
02/25/2005	02:36:10	1951	0.0	8.41	1198.2		
02/25/2005	02:36:40	1910	0.0	8.32	1198.2		
02/25/2005	02:37:10	1872	0.0	8.27	1198.2		
02/25/2005	02:37:40	1833	0.0	8.30	1198.2		
02/25/2005	02:38:10	1795	0.0	8.30	1198.2		
02/25/2005	02:38:40	1759	0.0	8.29	1198.2		
02/25/2005	02:39:10	1722	0.0	8.29	1198.2		
02/25/2005	02:39:40	1685	0.0	8.24	1198.2		
02/25/2005	02:40:10	1651	0.0	8.20	1198.2		
02/25/2005	02:40:40	1615	0.0	8.23	1198.2		
02/25/2005	02:41:10	1047	0.0	8.19	1198.2		
02/25/2005	02:41:40	14	0.0	8.31	1198.2		
02/25/2005	02:42:10	13	0.0	8.21	1198.2		
02/25/2005	02:42:40	13	0.0	8.37	1198.2		
02/25/2005	02:43:10	12	0.0	8.40	1198.2		
02/25/2005	02:43:40	11	0.0	6.64	1198.2		
02/25/2005	02:44:10	11	0.0	0.13	1198.2		
02/25/2005	02:44:40	11	0.0	0.18	1198.3		

Well RGU 414-24-198		Field Rayn Gluch		Job Start Dec/19/2009		Customer Williams		Job Number 306945	
Date	Time 24-hr clock	Treating Pressure PSI	Flow Rate B/M	Density LB/G	Volume BBL	Message			
02/25/2005	02:44:41	12	0.0	0.14	1198.3				
02/25/2005	02:44:45					Bump Top Plug			
02/25/2005	02:44:45	18	11.0	0.06	1198.5				
02/25/2005	02:44:51					End Displacement			
02/25/2005	02:44:55					165 bbls of cement back on the 2nd stage			
02/25/2005	02:44:55					80 bbls of cement back after 1st Stage			
02/25/2005	02:44:55					Cement dropped 12 feet and stoped dropping			
02/25/2005	04:25:08					Stopped Acquisition			
02/25/2005	04:25:08					End Job			

Post Job Summary

Average Pump Rates,					Volume of Fluid Injected, bbl				
Slurry	N2	Mud	Maximum Rate 6.5	Total Slurry 633.0	Mud	Spacer 80.0	N2		
Treating Pressure Summary, psi					Breakdown Fluid				
Maximum 2100	Final 2100	Average 250	Bump Plug to 2100	Breakdown	Type	Volume	Density		
Avg. N2 Percent	Designed Slurry Volume 633.0 bbl		Displacement 433.0 bbl	Mix Water Temp 60 degF	Cement Circulated to Surface? <input checked="" type="checkbox"/>	Volume 165.0 bbl			
					Washed Thru Perfs <input type="checkbox"/>	To			
Customer or Authorized Representative Ted Ragesdale			Schlumberger Supervisor Richard Shattuck		Circulation Lost <input type="checkbox"/>	Job Completed <input checked="" type="checkbox"/>			
					-	-			