

Downhole Schematic for Federal 25-8BB (PH25)



Project : South Piceance

API # : 05045191240000

Surface Location : SENE Sec 25 T7S - R95W 6th PM

Area : Parachute

County : GARFIELD

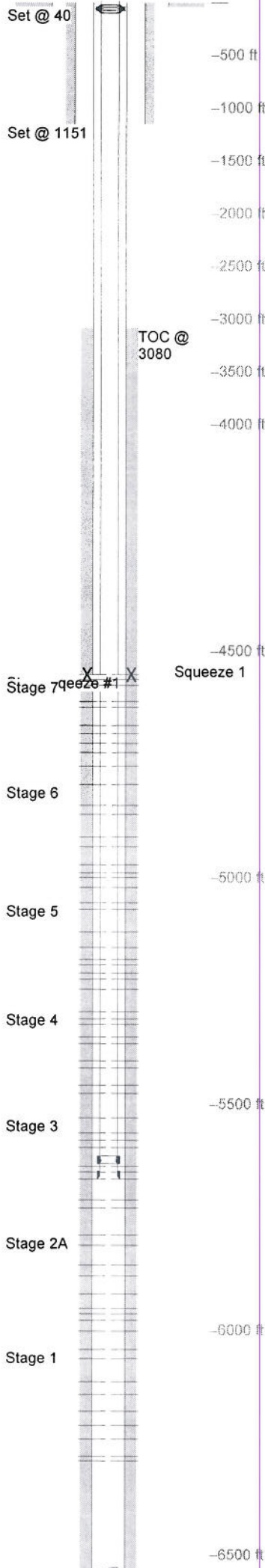
BHL : SENE-25-7S-95 W 6th PM

As Of : 08/06/2011

GL : 6064.0 ft

KB to GL : 23.0 ft

KB : 6087.0 ft



Casing Details Section	Hole Conductor	Casing 16	Mass 42	Set At 40	Length 40	Thread	Grade A52A	Description Joint
Surface	12.250	9.625	0	1,151	1			Cement Shoe
		9.625	36	1,150	43	LT&C	J-55	Casing(S.Track)
		9.625	36	1,107	1,081	LT&C	J-55	Casing
			0	26	2			Casing Head
		9.625	36	24	27	LT&C	J-55	Landing Jt.
Production	7.875	4.5	0	6,570	1	LT&C		Shoe
		4.5	11.6	6,569	41	LT&C	E-80	Casing
		4.5	0	6,528	1	LT&C		Float Collar
		4.5	11.6	6,526	986	LT&C	E-80	Casing
		4.5	11.6	5,540	23	LT&C	E-80	Marker Jt.
		4.5	11.6	5,517	946	LT&C	E-80	Casing
		4.5	11.6	4,571	23	LT&C	E-80	Marker Jt.
		4.5	11.6	4,548	4,519	LT&C	E-80	Casing
		4.5	11.6	29	6	LT&C	E-80	Mandel w/pup jt.
		4.5	11.6	23	28	LT&C	P-110	Landing Jt.

Cement Details Section	Sequence	Top	Density	Blend / Additives
Surface	Lead	0	8.3	20 bbls. water spacer /
	Tail	862	12.5	12.5 #/gal. -Class G / G+2%D79+0.2%D46+0.25 pps D29
Production	Lead	0	15.8	15.8 #/gal - Class G / D907+1.25%SOO1+0.2%D046+0.25ppsD29
	Tail	0	0.0	Water / 20 bbls
	Lead	0	9.6	Mudpush II / 30 bbls
	Tail	3,080	8.3	Zonelock / 30 bbls.
Conductor	Fill	0	9.6	LiteCrete / 41 #/sk D907, 13 #/sk D154, 46 #/sk D124, .3% D065, .2% D046, .256 #/sk D029, .350% D013
			0.0	40 yards redi mix /

Tubing and Downhole Equipment	O.D.	Length	Depth	Description
	0.000	21.00	21.00	KB
	4.063	0.82	21.82	Tubing Hanger WG 5K
	2.594	0.67	22.49	Saver Sub
	2.375	5,589.82	5,612.31	170 jts 2 3/8" J55 4.7#
	3.063	0.89	5,613.20	F-Nipple
	2.375	32.90	5,646.10	1 jt 2 3/8" J55 4.7#
	3.125	0.91	5,647.01	POBS
	3.250	1.22	6,526.00	POBS and 3 3/4" bit

Perforations	Stage	Date	From	To	Shots	07/30/2011	5,474	5,475	3
Stage 1	Squeeze 1	05/21/2011	6,288	6,289	3	5,456	5,457	3	
			6,278	6,279	3	5,418	5,419	3	
			6,240	6,241	3	5,402	5,403	3	
			6,210	6,211	3	5,364	5,365	3	
			6,178	6,179	3	5,350	5,351	3	
			6,140	6,141	3	5,322	5,323	3	
			6,112	6,113	3	5,310	5,311	3	
			6,060	6,061	3	5,294	5,295	3	
			6,040	6,041	3				
			Stage 5	07/30/2011	5,244	5,245	3	5,222	5,223
Stage 2A	05/23/2011	5,208	5,209	3	5,190	5,191	3		
		5,976	5,977	3	5,178	5,179	3		
		5,962	5,963	3	5,152	5,153	3		
		5,950	5,951	3	5,118	5,119	3		
		5,918	5,919	3	5,068	5,069	3		
		5,878	5,879	3	5,054	5,055	3		
		5,854	5,855	3					
5,810	5,811	3							
5,788	5,789	3							
Stage 6	07/31/2011	5,020	5,021	3	4,998	4,999	3		
Stage 2B	07/21/2011	4,988	4,989	3	4,988	4,989	3		
		5,976	5,977	3	4,970	4,971	3		
		5,962	5,963	3	4,930	4,931	3		
		5,950	5,951	3	4,908	4,909	3		
		5,918	5,919	6	4,858	4,859	3		
		5,878	5,879	3	4,838	4,839	3		
		5,854	5,855	3	4,792	4,793	3		
5,810	5,811	3							
5,788	5,789	3							
Stage 7	07/31/2011	4,752	4,753	3	4,722	4,723	3		
Stage 3	07/29/2011	4,710	4,711	3	4,702	4,703	3		
		5,664	5,665	3	4,680	4,681	3		
		5,648	5,649	3	4,662	4,663	3		
		5,636	5,637	3	4,622	4,623	3		
		5,594	5,595	3	4,610	4,611	3		
		5,578	5,579	3	4,574	4,575	3		
		5,562	5,563	3	4,560	4,561	3		
		5,528	5,529	3					
Stage 4	08/06/2011	4,550	4,551	4					

Frac Summary
 Stage 1 : 6,040 - 6,289, 27 - 0.340" shots, 8286 bbls Report Date: 05/23/2011
 Stage 2A : No Frac
 Stage 2B : 5,788 - 5,977, 27 - 0.340" shots, 6886 bbls of Slickwater Report Date: 07/29/2011
 Stage 3 : 5,528 - 5,729, 27 - 0.340" shots, 10795 bbls of Slickwater Report Date: 07/29/2011
 Stage 4 : 5,294 - 5,475, 27 - 0.340" shots, 10918 bbls of Slickwater Report Date: 07/30/2011
 Stage 5 : 5,054 - 5,245, 27 - 0.340" shots, 11851 bbls of Slickwater Report Date: 07/30/2011
 Stage 6 : 4,792 - 5,021, 27 - 0.340" shots, 13093 bbls of Slickwater Report Date: 07/31/2011
 Stage 7 : 4,560 - 4,753, 27 - 0.340" shots, 6429 bbls of Slickwater Report Date: 07/31/2011
 Stage squeeze #1 : No Frac

Bridge Plug Details	Depth	Date Set	Plug Type	Sacks Cement
	4,670.0	06/27/2011	CBP	0

CBP at 4,670.0 drilled out 07/05/2011

Cement Squeeze	Squeeze #	Date	From	To	Holes
	# 1	06/29/2011	4,550	4,551	4
					# Sacks 250

Comments
 SIBHP 15 psi 8/6/11

Set @ 6570
 PBTD @ 6526
 TD @ 6595