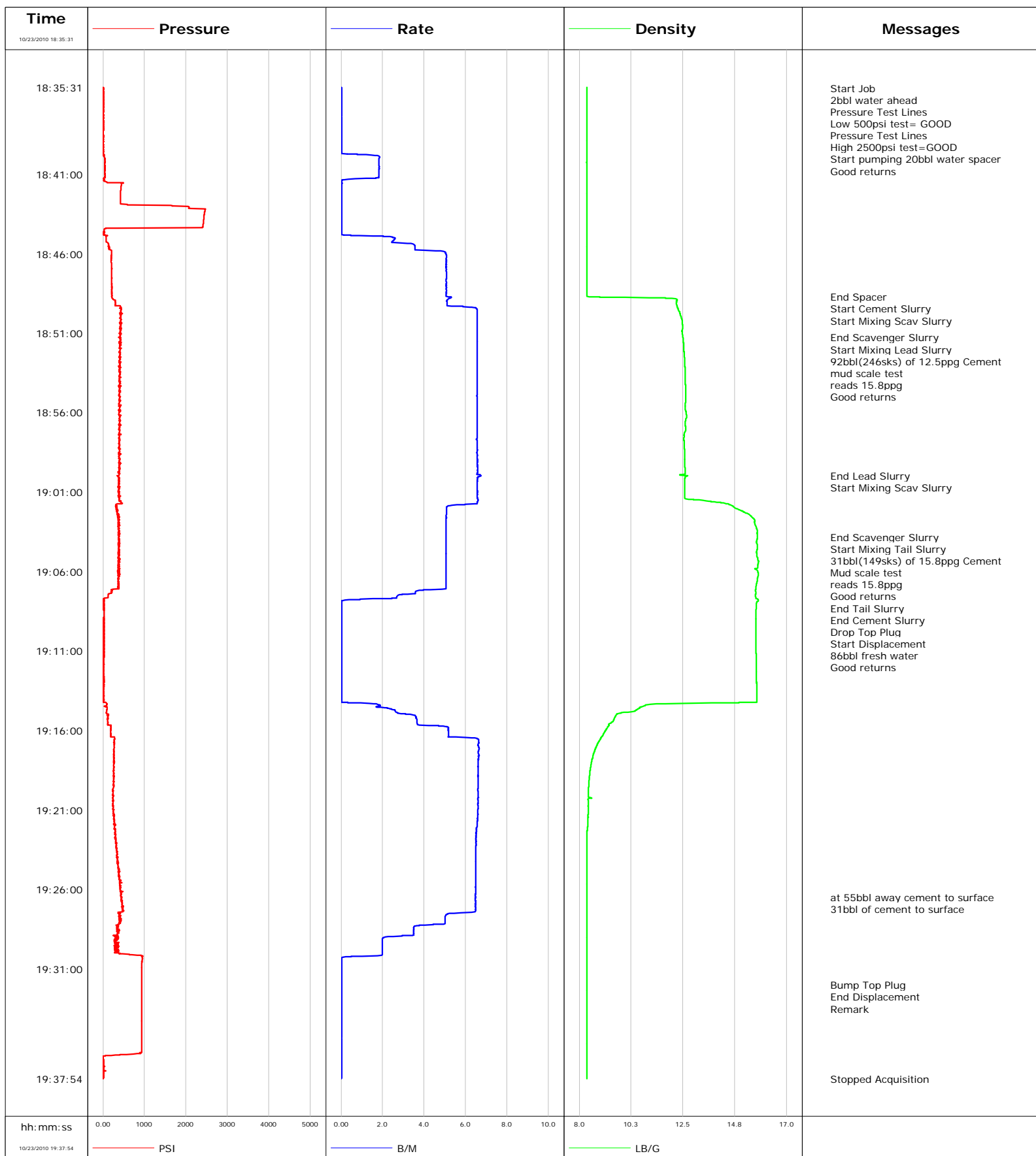


Well Federal 25-8BB
Field MAMM CREEK
Engineer Dustin C Krueger
Country United States

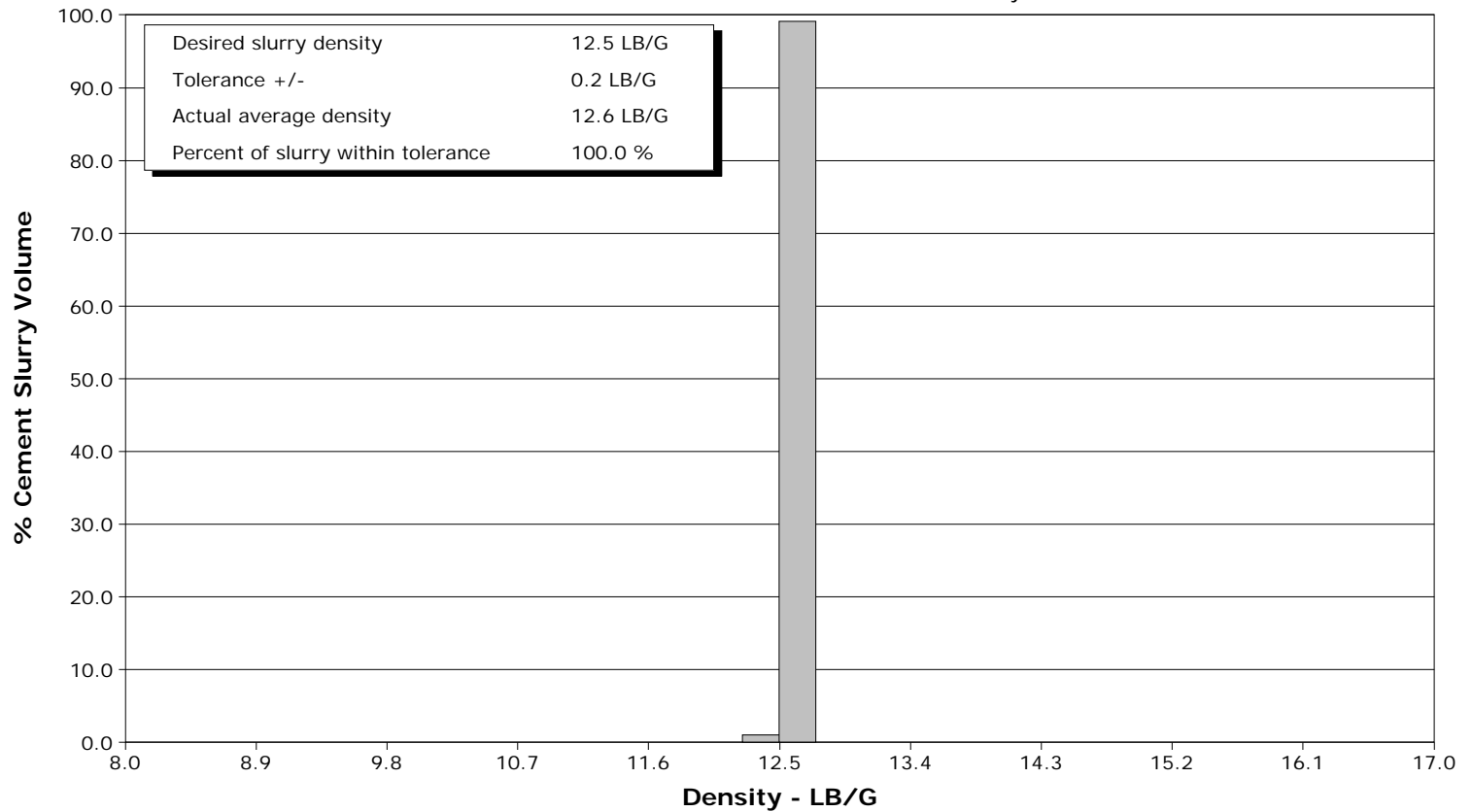
Client ENCANA OIL GAS
SIR No. 000428031
Job Type 1151ft 9 5/8 surface
Job Date 10-23-2010



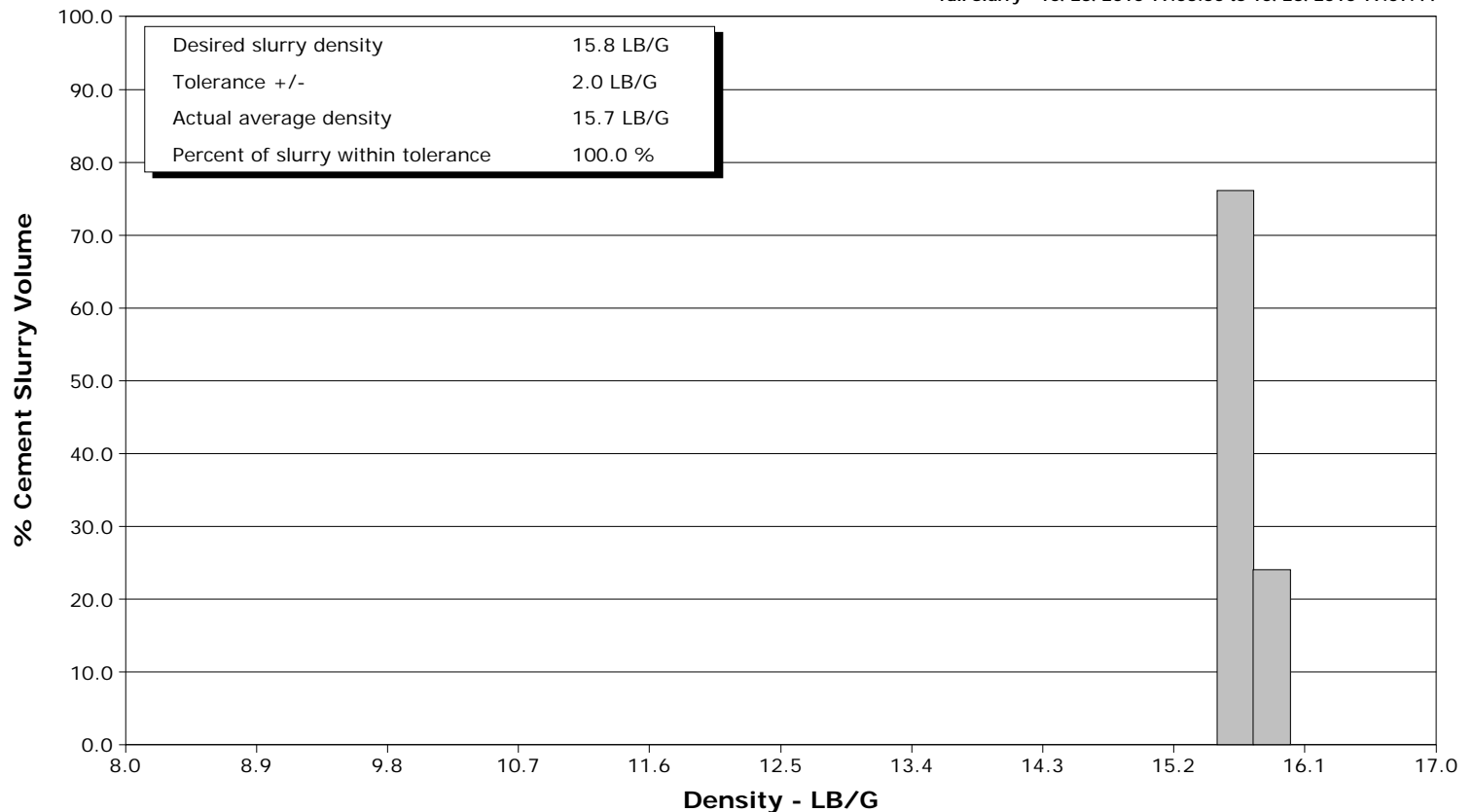
Well Federal 25-8BB
Field MAMM CREEK
Engineer Dustin C Krueger
Country United States

Client ENCANA OIL GAS
SIR No. 000428031
Job Type 1151ft 9 5/8 surface
Job Date 10-23-2010

Lead Slurry - 10/23/2010 18:51:15 to 10/23/2010 18:59:58



Tail Slurry - 10/23/2010 19:03:50 to 10/23/2010 19:07:44



Well Federal 25-8BB Federal 25-8BB			Field MAMM CREEK	Job Start Oct/23/2010	Customer ENCANA OIL & GAS	Job Number 000428031
Date	Time 24-hr clock	Treating Pressure PSI	Flow Rate B/M	Density LB/G	Volume BBL	Message
10/23/2010	18:45:50	210	4.8	8.33	5.8	
10/23/2010	18:48:20	211	5.1	8.33	18.4	
10/23/2010	18:48:42					End Spacer
10/23/2010	18:48:42	214	5.2	8.43	20.3	
10/23/2010	18:48:45					Start Cement Slurry
10/23/2010	18:48:45	220	5.3	9.98	20.5	
10/23/2010	18:48:46					Start Mixing Scav Slurry
10/23/2010	18:48:46	221	5.3	11.03	20.6	
10/23/2010	18:50:50	438	6.5	12.46	33.4	
10/23/2010	18:51:15					End Scavenger Slurry
10/23/2010	18:51:15					Start Mixing Lead Slurry
10/23/2010	18:51:15	369	6.5	12.49	36.1	
10/23/2010	18:51:19					92bbl(246sks) of 12.5ppg Cement
10/23/2010	18:51:19					mud scale test
10/23/2010	18:51:19					reads 15.8ppg
10/23/2010	18:51:19	411	6.5	12.50	36.5	
10/23/2010	18:51:20					Good returns
10/23/2010	18:51:20	414	6.5	12.50	36.6	
10/23/2010	18:53:20	391	6.6	12.59	49.8	
10/23/2010	18:55:50	421	6.5	12.60	66.1	
10/23/2010	18:58:20	401	6.6	12.56	82.5	
10/23/2010	18:59:58					End Lead Slurry
10/23/2010	18:59:58	344	6.7	12.70	93.3	
10/23/2010	19:00:00					Start Mixing Scav Slurry
10/23/2010	19:00:00	376	6.7	12.69	93.5	
10/23/2010	19:00:50	376	6.6	12.57	99.0	
10/23/2010	19:03:20	378	5.1	15.70	113.1	
10/23/2010	19:03:49					End Scavenger Slurry
10/23/2010	19:03:49	377	5.1	15.72	115.5	
10/23/2010	19:03:50					Start Mixing Tail Slurry
10/23/2010	19:03:50	375	5.1	15.72	115.6	
10/23/2010	19:03:55					31bbl(149sks) of 15.8ppg Cement
10/23/2010	19:03:55	391	5.1	15.72	116.0	
10/23/2010	19:03:56					Mud scale test
10/23/2010	19:03:56	372	5.1	15.72	116.1	
10/23/2010	19:03:57					reads 15.8ppg
10/23/2010	19:03:57					Good returns
10/23/2010	19:03:57	397	5.1	15.72	116.2	
10/23/2010	19:05:50	404	5.0	15.61	125.7	
10/23/2010	19:07:44					End Tail Slurry
10/23/2010	19:07:44	17	0.9	15.75	134.2	
10/23/2010	19:07:46					End Cement Slurry
10/23/2010	19:07:46	17	0.4	15.77	134.2	
10/23/2010	19:07:51					Drop Top Plug
10/23/2010	19:07:51	16	0.0	15.78	134.2	
10/23/2010	19:07:53					Start Displacement
10/23/2010	19:07:53	15	0.0	15.73	134.2	
10/23/2010	19:07:55					86bbl fresh water
10/23/2010	19:07:55	15	0.0	15.71	134.2	
10/23/2010	19:07:57					Good returns
10/23/2010	19:07:57	15	0.0	15.70	134.2	
10/23/2010	19:08:20	13	0.0	15.69	134.2	
10/23/2010	19:10:50	17	0.0	15.67	134.2	
10/23/2010	19:13:20	11	0.0	15.70	134.2	

Well Federal 25-8BB Federal 25-8BB			Field MAMM CREEK		Job Start Oct/23/2010	Customer ENCANA OIL & GAS		Job Number 000428031	
Date	Time 24-hr clock	Treating Pressure PSI	Flow Rate B/M	Density LB/G	Volume BBL	Message			
10/23/2010	19:18:20	264	6.6	8.49	154.8				
10/23/2010	19:20:50	250	6.6	8.40	171.3				
10/23/2010	19:23:20	314	6.5	8.33	187.6				
10/23/2010	19:25:50	421	6.5	8.33	203.9				
10/23/2010	19:26:29					at 55bbl away cement to surface			
10/23/2010	19:26:29	456	6.5	8.34	208.1				
10/23/2010	19:26:30					31bbl of cement to surface			
10/23/2010	19:26:30	437	6.5	8.34	208.2				
10/23/2010	19:28:20	338	3.5	8.33	218.6				
10/23/2010	19:30:50	938	0.0	8.34	223.3				
10/23/2010	19:32:00					Bump Top Plug			
10/23/2010	19:32:00	938	0.0	8.34	223.3				
10/23/2010	19:32:01					End Displacement			
10/23/2010	19:32:01	938	0.0	8.34	223.3				
10/23/2010	19:32:03					Remark			
10/23/2010	19:32:03	938	0.0	8.34	223.3				
10/23/2010	19:33:20	938	0.0	8.34	223.3				
10/23/2010	19:35:50	939	0.0	8.34	223.3				
10/23/2010	19:37:54	7	0.0	8.34	223.3				

Post Job Summary

Average Pump Rates,					Volume of Fluid Injected, bbl					
Slurry	N2	Mud	Maximum Rate		Total Slurry 123.0	Mud	Spacer 20.0		N2	
Treating Pressure Summary, psi					Breakdown Fluid					
Maximum 3000	Final 400	Average 250	Bump Plug to 1000	Breakdown 251	Type FreshWater	Volume 271.0 bbl		Density 8.34 lb/gal		
Avg. N2 Percent		Designed Slurry Volume 123.0 bbl		Displacement 85.6 bbl		Mix Water Temp 64 degF		Cement Circulated to Surface? <input checked="" type="checkbox"/>		Volume 31.0 bbl
								Washed Thru Perfs <input type="checkbox"/>		To
Customer or Authorized Representative David Wall			Schlumberger Supervisor Dustin C Krueger				Circulation Lost <input type="checkbox"/>		Job Completed <input checked="" type="checkbox"/>	
							-		-	