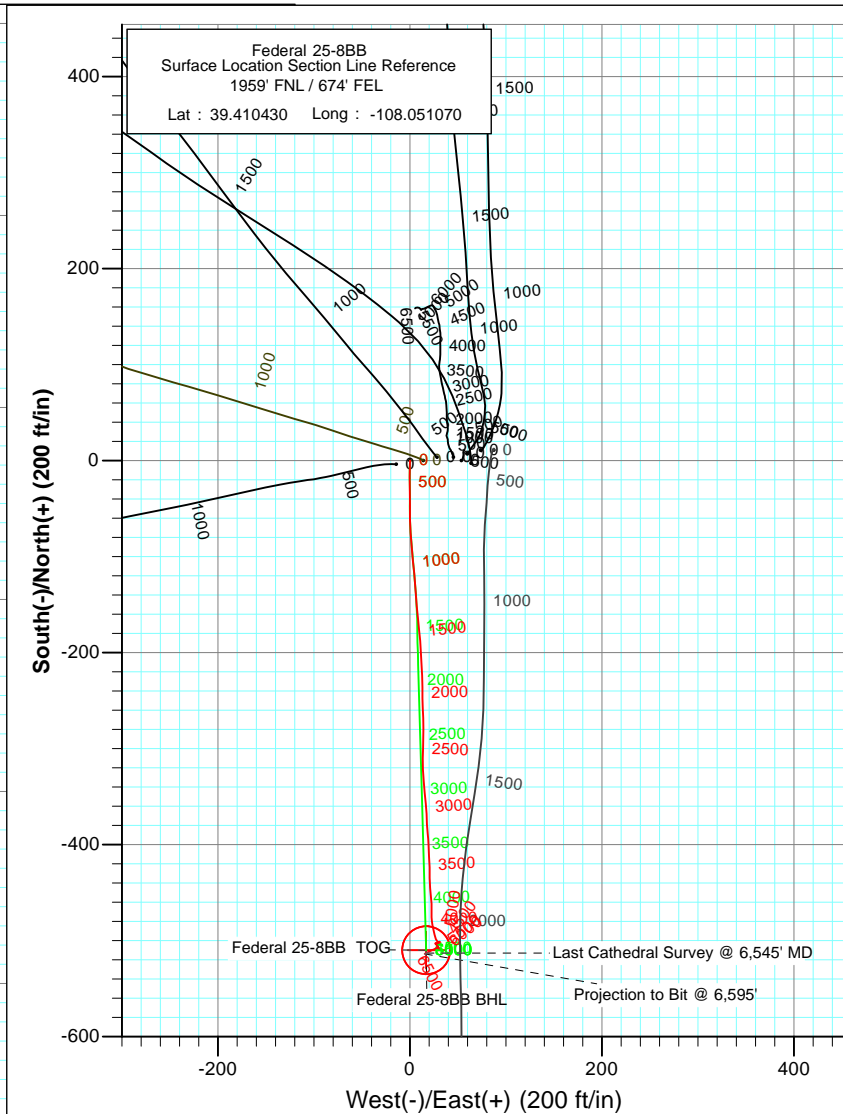
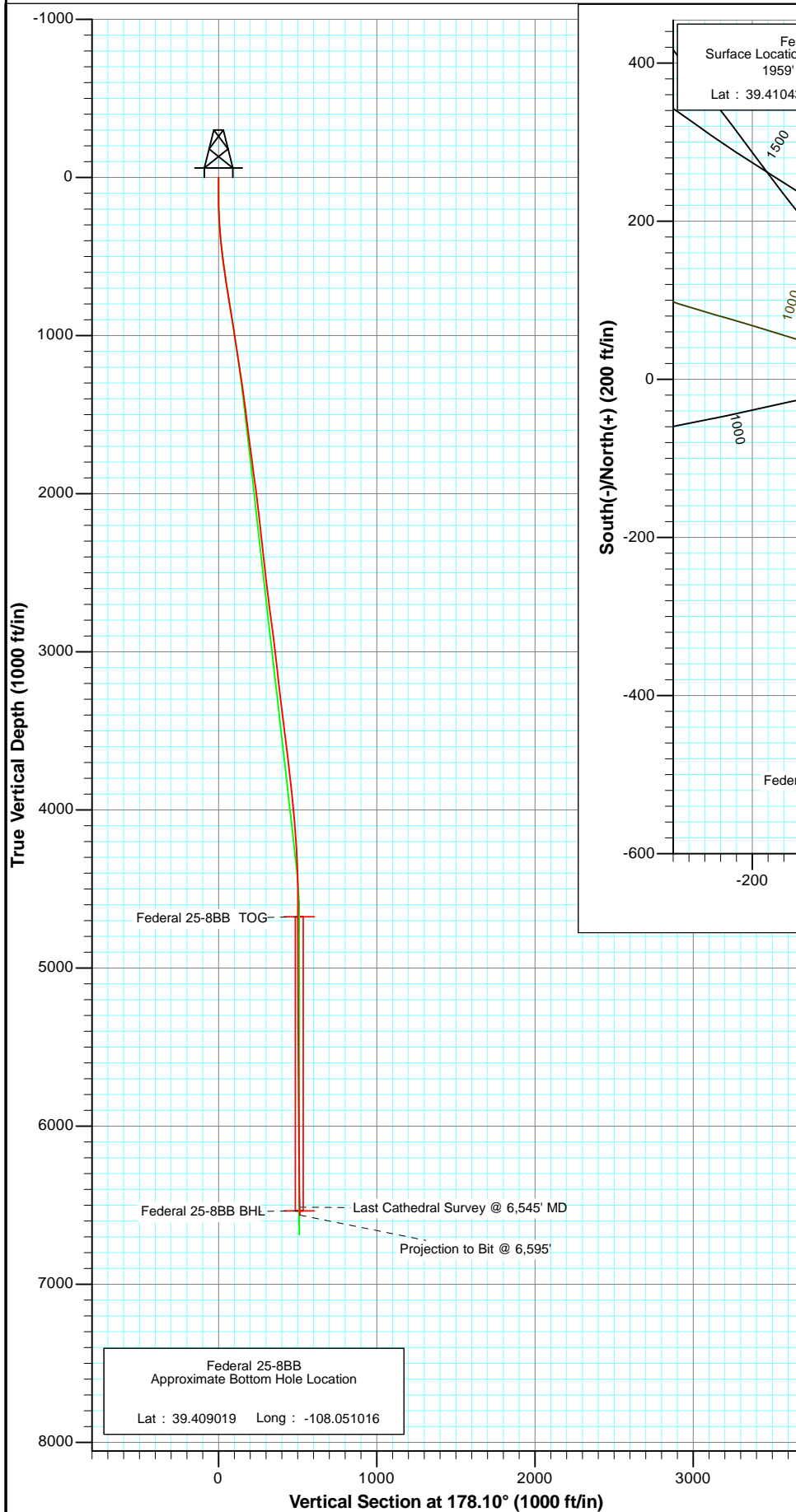




Project: S. Piceance (Parachute)
 Site: SENE Sec25-T7S-R96W (PH-25)
 Well: Federal 25-8BB
 Wellbore: DD
 Plan: FINAL



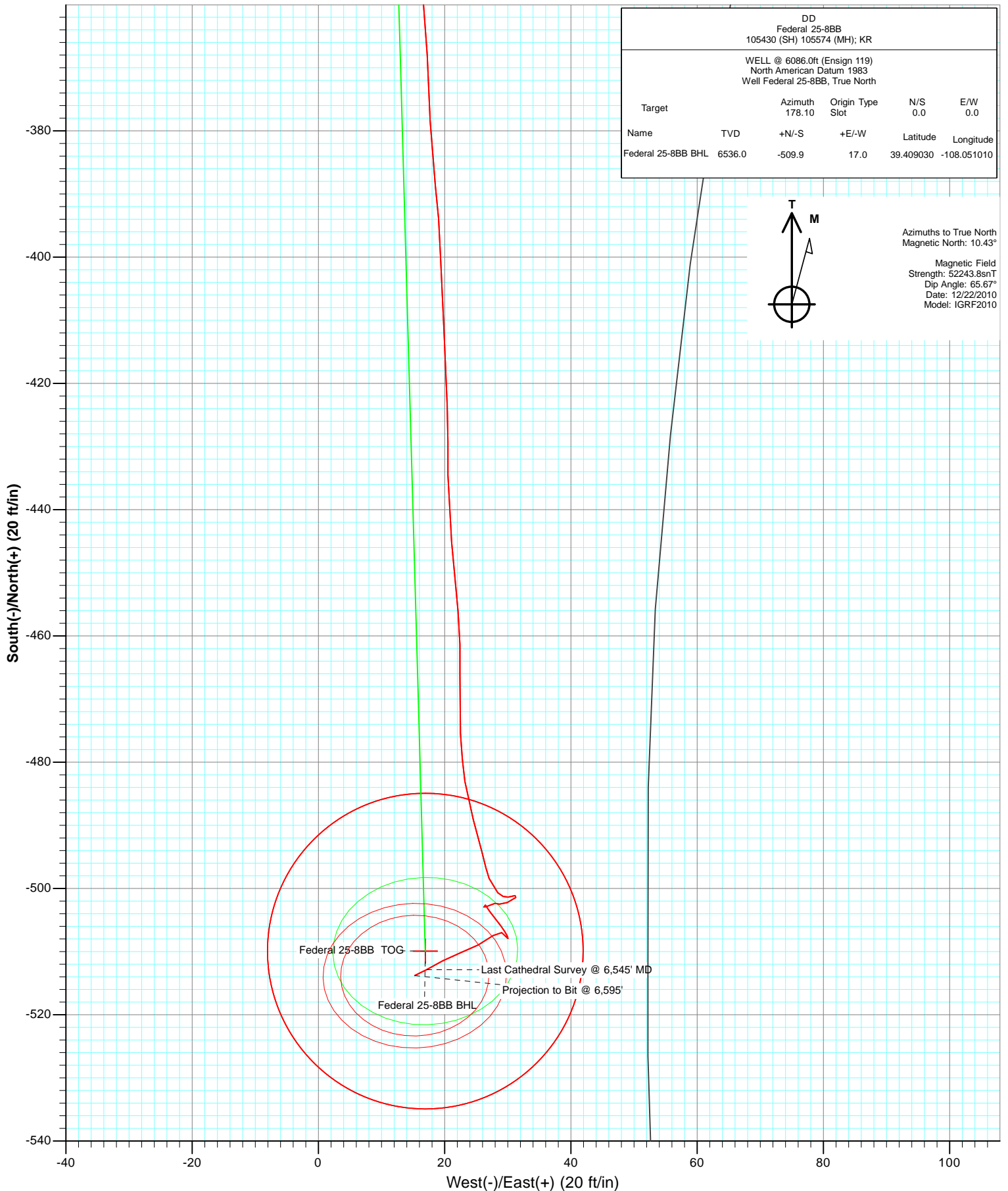
Azimuths to True North
 Magnetic North: 10.43°

Magnetic Field
 Strength: 52243.8nT
 Dip Angle: 65.67°
 Date: 12/22/2010
 Model: IGRF2010

DD Federal 25-8BB 105430 (SH) 105574 (MH); KR				
WELL @ 6086.0ft (Ensign 119) North American Datum 1983 Well Federal 25-8BB, True North				
Name	TVD	+N/-S	+E/-W	Latitude
Federal 25-8BB BHL	6536.0	-509.9	17.0	39.409030
				Longitude
				-108.051010



Project: S. Piceance (Parachute)
Site: SENE Sec25-T7S-R96W (PH-25)
Well: Federal 25-8BB
Wellbore: DD
Plan: FINAL



Survey Report

Company:	EnCana Oil & Gas (USA) Inc	Local Co-ordinate Reference:	Well Federal 25-8BB
Project:	S. Piceance (Parachute)	TVD Reference:	WELL @ 6086.0ft (Ensign 119)
Site:	SENE Sec25-T7S-R96W (PH-25)	MD Reference:	WELL @ 6086.0ft (Ensign 119)
Well:	Federal 25-8BB	North Reference:	True
Wellbore:	DD	Survey Calculation Method:	Minimum Curvature
Design:	DD	Database:	EDM 5000.1 US Multi Users DB

Project	S. Piceance (Parachute), Garfield County, CO		
Map System:	US State Plane 1983	System Datum:	Mean Sea Level
Geo Datum:	North American Datum 1983		
Map Zone:	Colorado Central Zone		

Site	SENE Sec25-T7S-R96W (PH-25)			
Site Position:		Northing:	1,584,503.36 ft	Latitude: 39.410440
From:	Lat/Long	Easting:	2,279,392.91 ft	Longitude: -108.050780
Position Uncertainty:	0.0 ft	Slot Radius:	0.000 in	Grid Convergence: -1.61 °

Well	Federal 25-8BB			
Well Position	+N/-S	0.0 ft	Northing:	1,584,502.01 ft
	+E/-W	0.0 ft	Easting:	2,279,310.91 ft
Position Uncertainty		0.0 ft	Wellhead Elevation:	ft
			Ground Level:	6,064.0 ft

Wellbore	DD				
Magnetics	Model Name	Sample Date	Declination (°)	Dip Angle (°)	Field Strength (nT)
	IGRF2010	12/22/2010	10.43	65.67	52,244

Design	DD			
Audit Notes:				
Version:	1.0	Phase:	ACTUAL	Tie On Depth: 0.0
Vertical Section:	Depth From (TVD) (ft)	+N/-S (ft)	+E/-W (ft)	Direction (°)
	0.0	0.0	0.0	178.10

Survey Program	Date	1/11/2011		
From (ft)	To (ft)	Survey (Wellbore)	Tool Name	Description
82.0	1,110.0	Survey #1 (DD)	MWD	Geolink MWD
1,245.0	6,595.0	Survey #2 (DD)	MWD	Geolink MWD

Survey									
Measured Depth (ft)	Inclination (°)	Azimuth (°)	Vertical Depth (ft)	+N/-S (ft)	+E/-W (ft)	Vertical Section (ft)	Dogleg Rate (°/100ft)	Build Rate (°/100ft)	Formations / Comments
0.0	0.00	0.00	0.0	0.0	0.0	0.0	0.00	0.00	
82.0	0.20	108.50	82.0	0.0	0.1	0.0	0.24	0.24	
113.0	0.40	150.10	113.0	-0.2	0.2	0.2	0.91	0.65	
143.0	0.80	181.10	143.0	-0.5	0.3	0.5	1.67	1.33	
173.0	1.30	193.40	173.0	-1.0	0.2	1.0	1.82	1.67	
203.0	2.00	185.00	203.0	-1.8	0.1	1.9	2.46	2.33	
233.0	2.50	181.70	233.0	-3.0	0.0	3.0	1.72	1.67	
263.0	3.00	179.80	262.9	-4.5	0.0	4.5	1.69	1.67	
293.0	3.60	183.50	292.9	-6.2	-0.1	6.2	2.12	2.00	
323.0	4.10	182.70	322.8	-8.2	-0.2	8.2	1.68	1.67	
354.0	4.40	183.10	353.7	-10.5	-0.3	10.5	0.97	0.97	
384.0	5.10	179.30	383.6	-13.0	-0.3	13.0	2.56	2.33	

Survey Report

Company:	EnCana Oil & Gas (USA) Inc	Local Co-ordinate Reference:	Well Federal 25-8BB
Project:	S. Piceance (Parachute)	TVD Reference:	WELL @ 6086.0ft (Ensign 119)
Site:	SENE Sec25-T7S-R96W (PH-25)	MD Reference:	WELL @ 6086.0ft (Ensign 119)
Well:	Federal 25-8BB	North Reference:	True
Wellbore:	DD	Survey Calculation Method:	Minimum Curvature
Design:	DD	Database:	EDM 5000.1 US Multi Users DB

Survey

Measured Depth (ft)	Inclination (°)	Azimuth (°)	Vertical Depth (ft)	+N/-S (ft)	+E/-W (ft)	Vertical Section (ft)	Dogleg Rate (°/100ft)	Build Rate (°/100ft)	Formations / Comments
414.0	5.60	178.00	413.5	-15.8	-0.3	15.8	1.71	1.67	
444.0	6.20	177.10	443.3	-18.9	-0.1	18.8	2.02	2.00	
475.0	6.90	179.90	474.1	-22.4	0.0	22.4	2.48	2.26	
566.0	8.20	179.70	564.3	-34.3	0.0	34.3	1.43	1.43	
656.0	8.30	180.80	653.4	-47.3	-0.1	47.2	0.21	0.11	
747.0	9.00	178.40	743.4	-60.9	0.1	60.9	0.87	0.77	
838.0	8.90	176.70	833.3	-75.1	0.7	75.1	0.31	-0.11	
929.0	9.60	174.40	923.1	-89.7	1.8	89.7	0.87	0.77	
1,020.0	8.50	174.50	1,012.9	-103.9	3.2	104.0	1.21	-1.21	
1,110.0	8.70	174.80	1,101.9	-117.3	4.4	117.4	0.23	0.22	Last Cathedral Survey @ 1110' MD
1,245.0	8.50	176.30	1,235.4	-137.4	6.0	137.6	0.22	-0.15	
1,338.0	8.40	175.00	1,327.4	-151.1	7.1	151.2	0.23	-0.11	
1,432.0	7.70	174.40	1,420.5	-164.2	8.3	164.4	0.75	-0.74	
1,525.0	7.30	173.40	1,512.7	-176.2	9.6	176.5	0.45	-0.43	
1,619.0	6.60	174.60	1,606.0	-187.5	10.7	187.8	0.76	-0.74	
1,712.0	7.70	178.90	1,698.3	-199.1	11.4	199.4	1.31	1.18	
1,805.0	7.40	174.30	1,790.5	-211.3	12.1	211.6	0.73	-0.32	
1,898.0	7.70	179.20	1,882.7	-223.5	12.8	223.8	0.76	0.32	
1,992.0	7.40	178.50	1,975.8	-235.8	13.0	236.1	0.33	-0.32	
2,085.0	6.80	181.00	2,068.1	-247.3	13.1	247.6	0.73	-0.65	
2,178.0	6.20	176.50	2,160.5	-257.8	13.3	258.1	0.85	-0.65	
2,272.0	6.30	176.20	2,254.0	-268.0	13.9	268.4	0.11	0.11	
2,365.0	7.00	180.80	2,346.3	-278.8	14.2	279.1	0.95	0.75	
2,458.0	6.20	182.60	2,438.7	-289.5	13.9	289.8	0.89	-0.86	
2,552.0	6.10	180.60	2,532.2	-299.6	13.6	299.8	0.25	-0.11	
2,645.0	6.80	182.60	2,624.6	-310.0	13.3	310.3	0.79	0.75	
2,738.0	7.40	176.30	2,716.9	-321.5	13.4	321.7	1.06	0.65	
2,832.0	7.70	176.60	2,810.1	-333.8	14.2	334.1	0.32	0.32	
2,925.0	7.40	173.20	2,902.3	-346.0	15.3	346.3	0.58	-0.32	
3,018.0	6.60	174.70	2,994.6	-357.2	16.5	357.6	0.88	-0.86	
3,112.0	6.50	177.20	3,088.0	-367.9	17.2	368.3	0.32	-0.11	
3,205.0	6.50	177.70	3,180.4	-378.4	17.7	378.8	0.06	0.00	
3,298.0	6.10	172.90	3,272.8	-388.6	18.5	389.0	0.71	-0.43	
3,392.0	7.60	178.10	3,366.1	-399.8	19.4	400.2	1.73	1.60	
3,485.0	7.30	176.70	3,458.3	-411.8	19.9	412.3	0.38	-0.32	
3,578.0	7.20	178.30	3,550.6	-423.5	20.4	424.0	0.24	-0.11	
3,672.0	6.20	180.60	3,644.0	-434.5	20.5	435.0	1.10	-1.06	
3,766.0	6.80	173.60	3,737.3	-445.1	21.1	445.6	1.06	0.64	
3,859.0	6.80	175.60	3,829.7	-456.1	22.1	456.6	0.25	0.00	
3,952.0	5.80	181.70	3,922.1	-466.3	22.4	466.8	1.29	-1.08	
4,046.0	5.40	177.00	4,015.7	-475.4	22.5	475.9	0.65	-0.43	
4,139.0	4.00	171.60	4,108.4	-483.0	23.2	483.5	1.58	-1.51	
4,232.0	3.60	163.30	4,201.2	-489.0	24.5	489.6	0.73	-0.43	
4,326.0	3.20	167.10	4,295.0	-494.4	26.0	495.0	0.49	-0.43	
4,419.0	1.90	161.00	4,387.9	-498.4	27.0	499.0	1.43	-1.40	
4,512.0	1.50	132.70	4,480.9	-500.7	28.4	501.3	0.99	-0.43	
4,606.0	0.90	77.50	4,574.8	-501.3	30.1	502.1	1.31	-0.64	
4,699.0	0.50	77.80	4,667.8	-501.1	31.2	501.9	0.43	-0.43	
4,793.0	0.60	216.20	4,761.8	-501.4	31.3	502.2	1.09	0.11	
4,886.0	1.40	248.90	4,854.8	-502.2	29.9	502.9	1.02	0.86	
4,979.0	0.30	306.70	4,947.8	-502.5	28.7	503.2	1.36	-1.18	
5,073.0	0.60	267.20	5,041.8	-502.4	28.0	503.0	0.44	0.32	
5,166.0	1.10	240.90	5,134.8	-502.8	26.7	503.4	0.67	0.54	

Survey Report

Company:	EnCana Oil & Gas (USA) Inc	Local Co-ordinate Reference:	Well Federal 25-8BB
Project:	S. Piceance (Parachute)	TVD Reference:	WELL @ 6086.0ft (Ensign 119)
Site:	SENE Sec25-T7S-R96W (PH-25)	MD Reference:	WELL @ 6086.0ft (Ensign 119)
Well:	Federal 25-8BB	North Reference:	True
Wellbore:	DD	Survey Calculation Method:	Minimum Curvature
Design:	DD	Database:	EDM 5000.1 US Multi Users DB

Survey									
Measured Depth (ft)	Inclination (°)	Azimuth (°)	Vertical Depth (ft)	+N/-S (ft)	+E/-W (ft)	Vertical Section (ft)	Dogleg Rate (°/100ft)	Build Rate (°/100ft)	Formations / Comments
5,259.0	0.50	39.30	5,227.8	-502.9	26.2	503.5	1.69	-0.65	
5,352.0	0.00	153.30	5,320.8	-502.6	26.5	503.2	0.54	-0.54	
5,446.0	0.90	145.00	5,414.8	-503.2	26.9	503.8	0.96	0.96	
5,539.0	0.70	143.50	5,507.8	-504.3	27.6	504.9	0.22	-0.22	
5,633.0	1.60	142.40	5,601.8	-505.8	28.8	506.5	0.96	0.96	
5,726.0	0.50	155.00	5,694.7	-507.2	29.7	507.9	1.20	-1.18	
5,819.0	0.10	144.60	5,787.7	-507.6	30.0	508.3	0.43	-0.43	
5,913.0	0.30	172.70	5,881.7	-507.9	30.0	508.6	0.23	0.21	
6,006.0	0.70	329.60	5,974.7	-507.7	29.8	508.4	1.06	0.43	
6,099.0	0.60	293.90	6,067.7	-507.0	29.1	507.7	0.44	-0.11	
6,192.0	1.40	233.80	6,160.7	-507.5	27.7	508.1	1.31	0.86	
6,286.0	2.00	241.10	6,254.7	-508.9	25.3	509.5	0.68	0.64	
6,379.0	1.80	251.80	6,347.6	-510.2	22.5	510.6	0.44	-0.22	
6,472.0	2.10	239.90	6,440.6	-511.5	19.7	511.9	0.54	0.32	
6,545.0	2.40	243.00	6,513.5	-512.8	17.1	513.1	0.44	0.41	Last Cathedral Survey @ 6,545' MD
6,595.0	2.40	243.00	6,563.5	-513.8	15.3	514.0	0.00	0.00	Projection to Bit @ 6,595'

Targets									
Target Name	Dip Angle (°)	Dip Dir. (°)	TVD (ft)	+N/-S (ft)	+E/-W (ft)	Northing (ft)	Easting (ft)	Latitude	Longitude
- hit/miss target									
- Shape									
Federal 25-8BB BHL	0.00	0.00	6,536.0	-509.9	17.0	1,583,991.82	2,279,313.53	39.409030	-108.051010
- actual wellpath misses target center by 22.7ft at 6545.0ft MD (6513.5 TVD, -512.8 N, 17.1 E)									
- Circle (radius 25.0)									
Federal 25-8BB TOG	0.00	0.00	4,676.0	-509.9	17.0	1,583,991.82	2,279,313.53	39.409030	-108.051010
- actual wellpath misses target center by 16.8ft at 4707.2ft MD (4676.0 TVD, -501.1 N, 31.2 E)									
- Point									

Design Annotations				
Measured Depth (ft)	Vertical Depth (ft)	Local Coordinates		Comment
		+N/-S (ft)	+E/-W (ft)	
1,110.0	1,101.9	-117.3	4.4	Last Cathedral Survey @ 1110' MD
6,545.0	6,513.5	-512.8	17.1	Last Cathedral Survey @ 6,545' MD
6,595.0	6,563.5	-513.8	15.3	Projection to Bit @ 6,595'

Checked By: _____	Approved By: _____	Date: _____
-------------------	--------------------	-------------