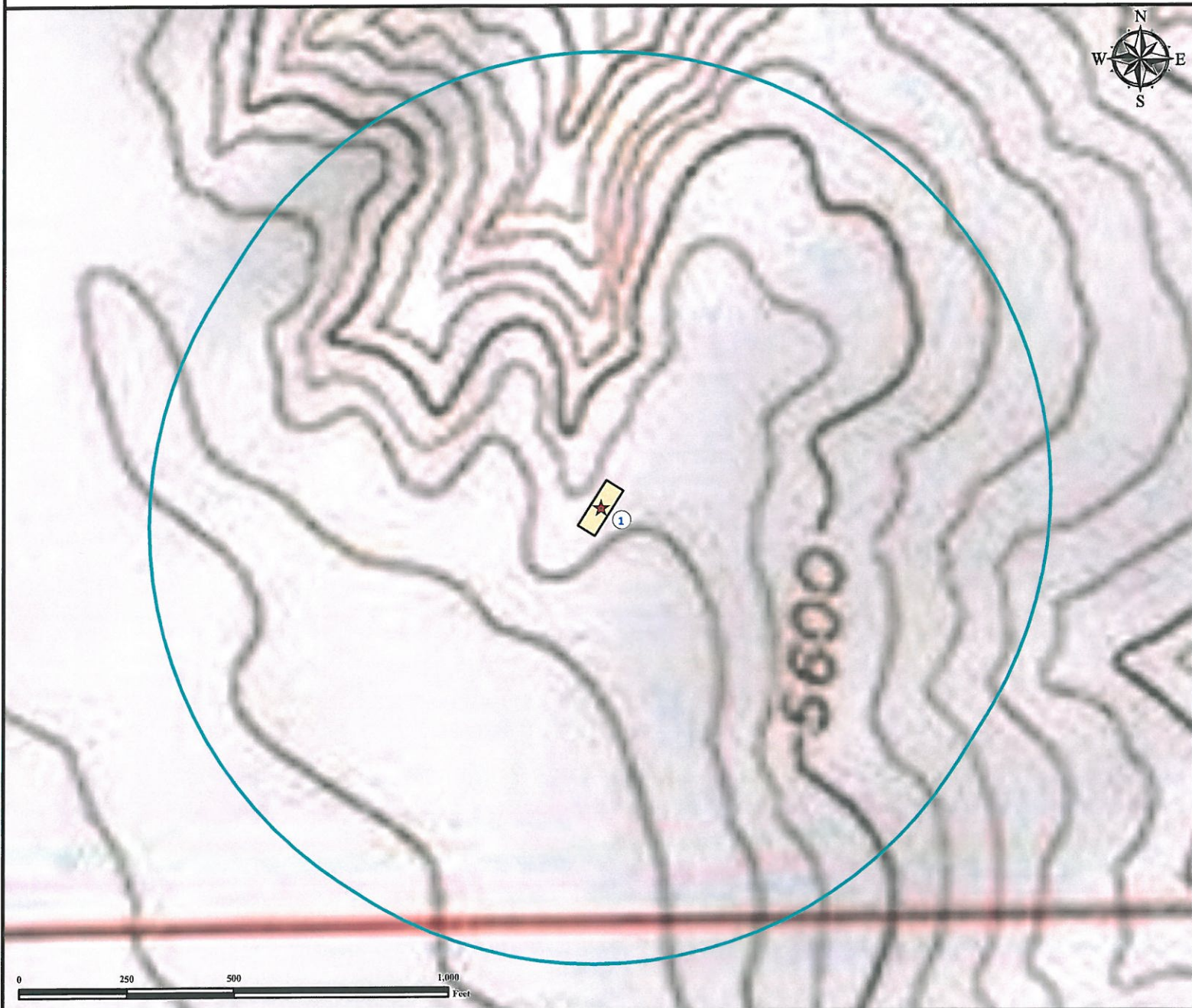


Hydrology Map

BRADBURY 13-35 FACILITY

SW¼ SE¼ SECTION 35, TOWNSHIP 4 SOUTH, RANGE 62 WEST OF THE 6TH PRINCIPAL MERIDIAN



1. Proposed BRADBURY 13-35 FACILITY.

There are no surface waters within a 1000' radius of the proposed oil & gas location.

Legend

- ★ Reference Point
- 1000' Radius
- Proposed Facility

Reference Location

** All Measurements are Made from
★ Reference Point **

Lat: 39.654229° Long: -104.290888° (NAD83)
Elevation: 5629 Feet



Use our resources to find yours!
www.petro-fs.com
(303) 928-7128

Field Date: 10/20/2011
Drafting Date: 10/21/2011
Drafter: KLM
Checked By: BHF

Data Sources:
TOPO courtesy USGS

Prepared for:
**OVERLAND
RESOURCES, LLC**