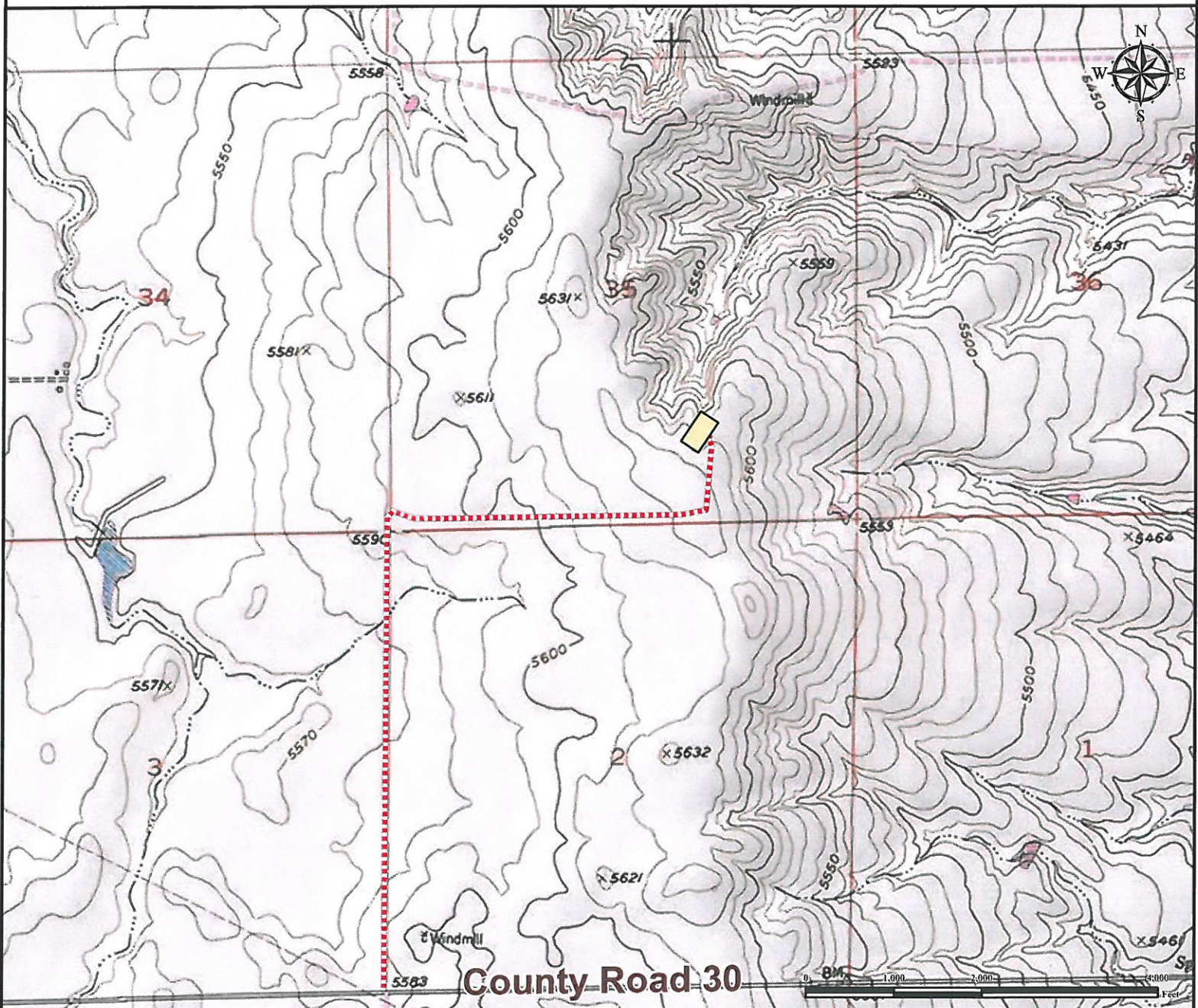


Access Road Map


BRADBURY 13-35 FACILITY

SW¼ SE¼ SECTION 35, TOWNSHIP 4 SOUTH, RANGE 62 WEST OF THE 6TH PRINCIPAL MERIDIAN



From Byers, CO: From the intersection of East Highway 40 and North Main Street, drive west on E Highway 40 to County Road 173 (Bradbury Krebs Rd) for ±1.3 miles.
Turn Left onto County Road 173 (Bradbury Krebs Rd) and drive south for ±5.4 miles.
Follow Road Right as it turns into County Road 30. Drive West for ±3.1 miles to proposed access road.
Turn Right onto proposed access road and drive North ±1.01 miles. Continue on access road as it turns East and drive for ±0.67 miles. Road will turn North and drive Northeast for ±0.16 miles to proposed facility.
 Total distance from Byers, CO to proposed facility is ±11.64 miles.

** Size of proposed facility has been exaggerated to be visible at this scale **

Legend <div><div></div> Proposed Facility</div> <div><div>*****</div> Proposed Access Road</div>			Reference Location ** All Measurements are Made from ★ Reference Point ** Lat: 39.654229° Long:-104.290888° (NAD83) Elevation: 5629 Feet
<div><div><div>PFS Petroleum Field Services</div></div><div><div>Use our resources to find yours!</div><div>www.petro-fs.com</div><div>(303) 928-7128</div></div></div>	<div><div>Field Date: 10/20/2011</div><div>Drafting Date: 10/21/2011</div><div>Drafter: KLM</div><div>Checked By: BHF</div></div> <div><div>Data Sources:</div><div>- TOPO courtesy of USGS</div></div>	<div>Prepared for:</div> <div>OVERLAND RESOURCES, LLC</div>	