

# Downhole Schematic for N Parachute WF06C-22 K22 596



Project : North Piceance

API # : 05045188780000

Surface Location : NESW Sec 22 T5S - R96W 6th PM

Area : N Parachute

County :

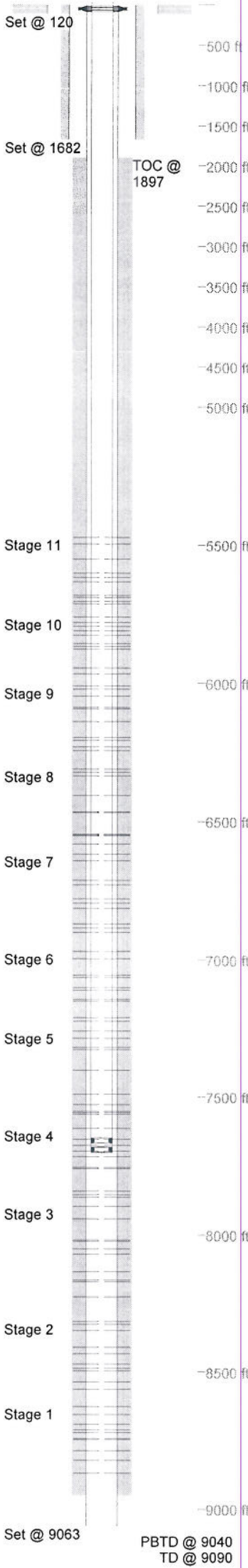
BHL : SENW-22-5S-96 W 6th PM

As Of : 08/09/2011

GL : 6530.0 ft

KB to GL : 23.0 ft

KB : 6553.0 ft



Casing Details									
Section	Hole	Casing	Mass	Set At	Length	Thread	Grade	Description	
Conductor	26.000	16	0	120	120		A52A	Line Pipe	
Surface	12.250	9.625	0	1,682	2	LT&C		Float Shoe	
		9.625	36	1,681	43	LT&C	J55	Shoe Jt.	
		9.625	36	1,638	1,611	LT&C	J55	Casing	
		9.625	36	1,638	5	ST&C	J55	Wellhead Assm	
		9.625	36	23	29	LT&C	J55	Landing Joint	
Production	8.750	4.5	0	9,063	2	Butt	L80	Float Shoe	
		4.5	11.6	9,062	20	Butt	E80	Marker Jnt	
		4.5	11.6	9,041	2	Butt	L80	Float Collar	
		4.5	11.6	9,040	1,509	Butt	E80	Casing	
		4.5	11.6	7,531	23	Butt	S80	Marker Jnt	
		4.5	11.6	7,508	2,195	Butt	E80	Casing	
		4.5	11.6	5,313	23	Butt	S80	Marker Jnt	
4.5	11.6	5,290	5,295	Butt	E80	Casing			

Cement Details									
Section	Sequence	Top	Density	Blend / Additives					
Production	Scavenger	0	12.0	MUDPUSH II / 30 bbl 100# D182+6600#D031					
	Lead	1,897	12.5	12.5ppg Poz "G" / 5.0% D044+0.2% D046+2.0% D079 + 1.3% D013					
	Tail	4,316	13.0	+ 0.4% D182 + 0.25 PPS D029					
				13.0 PPG Poz "A" - Rockies Correct / 5.0% D044 + 35% D178+					
				3.0% D020 + 0.4% D182 + 0.75% D112 + 0.35% D201% + 0.2%					
				D065+ 0.2% D046 + 0.25 PPS D029					
Conductor	Fill	0	13.0	Control set C / 1/4lb/sk Polliflake					
	Lead	51	13.0	Control Set C / 1/4lb/sk Polliflake					
	Tail	0	12.5	"G" / G+2.0%D079+0.2%D46+0.25 pps D29					
		1,042	14.0	"G" / G+1%D79+0.2%D46+0.25pps D29					

Tubing and Downhole Equipment			
O.D.	Length	Depth	Description
0.000	22.00	0.00	22ft KB
7.063	0.93	22.00	7-1/16" Wood Group Tbg hanger
3.063	7,626.92	7,648.92	246jts 2-3/8" 4.7# L80 EUE Tbg
3.063	1.10	7,650.02	2-3/8" N80 Flag Nipple (1.995" I.D)
3.063	31.18	7,681.20	1jt (247jts total) 2-3/8" 4.7# L80 EUE Tbg
3.063	1.10	7,682.30	2-3/8" Seating Nipple (1.78" I.D)
3.063	10.10	7,692.40	2-3/8" 10ft Pup Jt = EOT

Perforations							
Stage	Date	From	To	Shots			
Stage 1	07/21/2011	8,869	8,870	3	7,756	7,757	3
		8,823	8,824	3	7,717	7,718	3
		8,787	8,788	3	7,697	7,698	3
		8,746	8,747	3	7,676	7,677	3
		8,743	8,744	3	7,654	7,655	3
Stage 5	07/27/2011	8,721	8,722	3	7,615	7,616	3
		8,711	8,712	3	7,563	7,564	3
		8,691	8,692	3	7,557	7,558	3
		8,655	8,656	3	7,552	7,553	3
		8,625	8,626	3	7,528	7,529	3
Stage 10	08/02/2011	7,490	7,491	3	7,403	7,404	3
		5,966	5,967	3	7,327	7,328	3
		5,945	5,946	3	7,320	7,321	3
		5,876	5,877	3	7,287	7,288	3
		5,867	5,868	3	7,260	7,261	3
Stage 6	07/28/2011	5,856	5,857	3	7,223	7,224	3
		5,826	5,827	3	7,211	7,212	3
		5,810	5,811	3	7,150	7,151	3
		5,795	5,796	3	7,143	7,144	3
		5,780	5,781	3	7,110	7,111	3
Stage 11	08/03/2011	5,761	5,762	3	7,101	7,102	3
		5,713	5,714	3	7,064	7,065	3
		5,705	5,706	3	7,056	7,057	3
		5,690	5,691	3	6,996	6,997	3
		5,683	5,684	3	6,970	6,971	3
Stage 7	07/29/2011	5,633	5,634	3	6,901	6,902	3
		5,617	5,618	3	6,886	6,887	3
		5,602	5,603	3	6,870	6,871	3
		5,551	5,552	3	6,814	6,815	3
		5,497	5,498	3	6,796	6,797	3
Stage 2	07/25/2011	5,473	5,474	3	6,780	6,781	3
		8,563	8,564	3	6,730	6,731	3
		8,536	8,537	3	6,713	6,714	3
		8,495	8,496	3	6,643	6,644	3
		8,487	8,488	3	6,618	6,619	3
Stage 8	08/01/2011	8,471	8,472	3	6,582	6,583	3
		8,434	8,435	3	6,552	6,553	3
		8,410	8,411	3	6,549	6,550	3
		8,349	8,350	3	6,546	6,547	3
		8,326	8,327	3	6,468	6,469	3
Stage 3	07/26/2011	8,316	8,317	3	6,465	6,466	3
		8,225	8,226	3	6,407	6,408	3
		8,170	8,171	3	6,335	6,336	3
		8,164	8,165	3	6,322	6,323	3
		8,133	8,134	3	6,311	6,312	3
Stage 9	08/02/2011	8,070	8,071	3	6,245	6,246	3
		8,051	8,052	3	6,231	6,232	3
		8,023	8,024	3	6,208	6,209	3
		8,018	8,019	3	6,197	6,198	3
		7,941	7,942	3	6,138	6,139	3
Stage 4	07/26/2011	7,896	7,897	3	6,092	6,093	3
		7,863	7,864	3	6,087	6,088	3
		7,854	7,855	3	6,047	6,048	3
		7,841	7,842	3	6,021	6,022	3
		7,761	7,762	3	6,010	6,011	3

Frac Summary	
Stage 1 : 8,625 - 8,870, 30 - 0.420" shots,	3377 bbls of Slickwater Report Date: 07/25/2011
Stage 2 : 8,316 - 8,564, 30 - 0.420" shots,	11637 bbls of Slickwater Report Date: 07/25/2011
Stage 3 : 7,896 - 8,226, 30 - 0.420" shots,	6344 bbls of Slickwater Report Date: 07/26/2011
Stage 4 : 7,615 - 7,864, 30 - 0.420" shots,	11359 bbls of Slickwater Report Date: 07/27/2011
Stage 5 : 7,260 - 7,564, 30 - 0.420" shots,	8945 bbls of Slickwater Report Date: 07/28/2011
Stage 6 : 6,970 - 7,224, 30 - 0.420" shots,	17301 bbls of Slickwater Report Date: 07/29/2011
Stage 7 : 6,618 - 6,902, 30 - 0.420" shots,	17301 bbls of Slickwater Report Date: 07/29/2011
Stage 8 : 6,311 - 6,583, 30 - 0.420" shots,	5417 bbls of Slickwater Report Date: 08/02/2011
Stage 9 : 6,010 - 6,246, 30 - 0.420" shots,	9966 bbls of Slickwater Report Date: 08/02/2011
Stage 10 : 5,761 - 5,967, 30 - 0.420" shots,	11080 bbls of Slickwater Report Date: 08/03/2011
Stage 11 : 5,473 - 5,714, 30 - 0.420" shots,	14609 bbls of Slickwater Report Date: 08/04/2011

Comments  
 See Attached Tbg tally  
 247jts of 2-3/8" 4.7# L80  
 Mfg: Tenaris  
 Made in Colombia