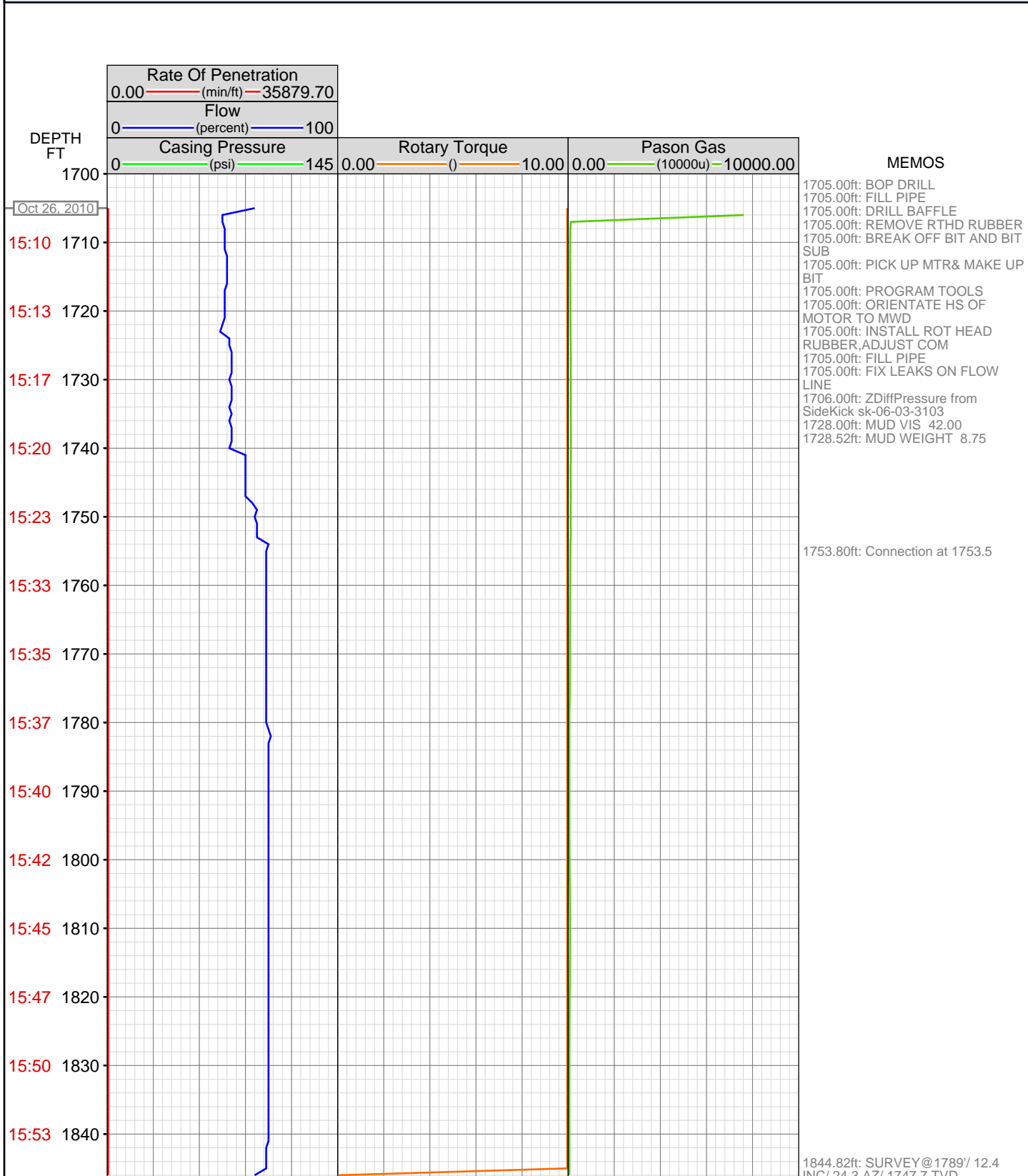


DataHub EDR Log

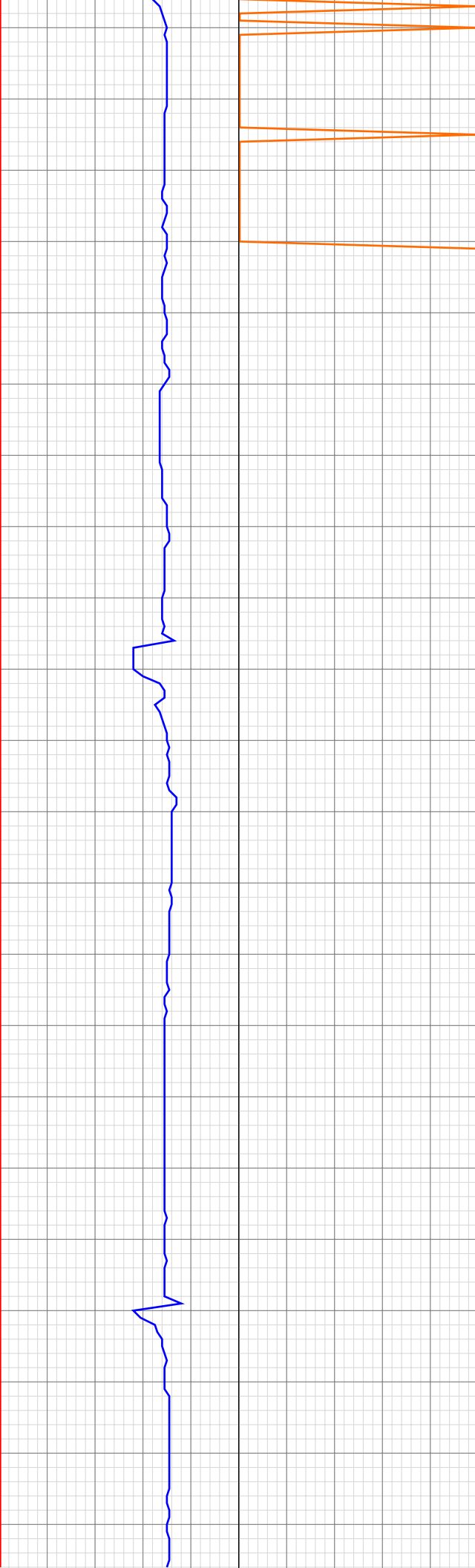
Tue Nov 09, 2010 13:33:19
Well Dossier 1288029841
Marilyn Tucker

OPERATOR: EnCana Oil & Gas (USA), Inc.
WELL: NPWF06C-22 K22 596
FIELD:
LOCATION: QTR:NE SW SEC:22 TWP:5S RNG:96W MERIDIAN
COUNTRY: USA
RIG: Pat-UTI 303

CONTRACTOR: Patterson-UTI Drilling Company
UNIQUE WELL ID: 05 045 1887 00
SPUD DATE: Oct 26, 2010 15:00
RELEASE DATE: Nov 03, 2010 15:00



16:02 1850
16:07 1860
16:12 1870
16:16 1880
16:18 1890
16:20 1900
16:23 1910
16:25 1920
16:27 1930
16:36 1940
16:38 1950
16:40 1960
16:43 1970
16:45 1980
16:47 1990
16:50 2000
16:52 2010
16:54 2020
17:03 2030
17:06 2040
17:08 2050
17:11 2060



INC/ 24.3 AZ/ 1747.7 TVD
1844.82ft: Connection at 1845.0
SLIDING

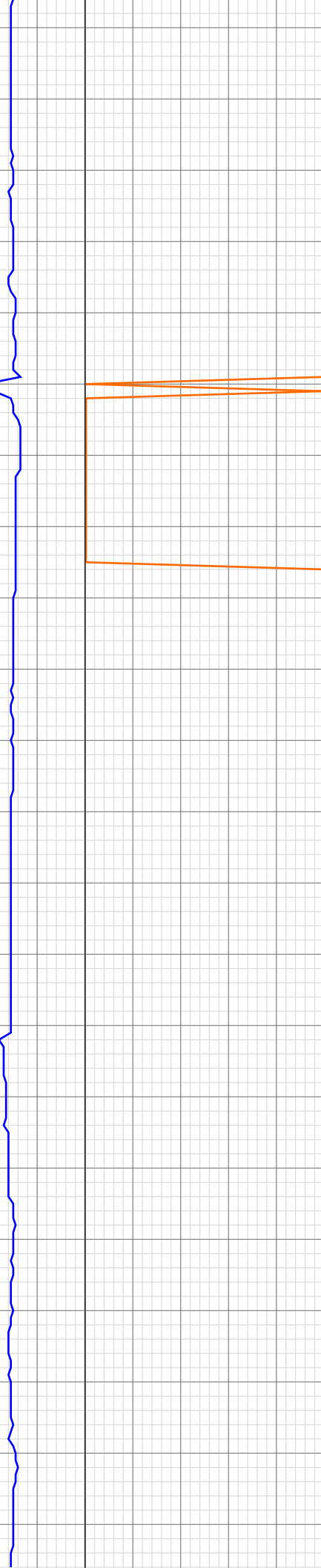
1900.10ft: ROTATING

1935.93ft: SURVEY@1881'/ 14.6
INC/ 28.5 AZ/ 1837.1 TVD
1935.93ft: Connection at 1936.6

1950.00ft: MUD VIS 41.00
1950.00ft: MUD WEIGHT 8.80

2028.42ft: SURVEY@1973'/ 14.1
INC/ 28.3 AZ/ 1926.3 TVD
2028.42ft: Connection at 2028.2

17:13 2070
17:16 2080
17:18 2090
17:21 2100
17:24 2110
17:33 2120
17:37 2130
17:42 2140
17:46 2150
17:49 2160
17:51 2170
17:53 2180
17:55 2190
17:57 2200
17:59 2210
18:08 2220
18:11 2230
18:14 2240
18:17 2250
18:19 2260
18:22 2270
18:25 2280



2118.99ft: SLIDING
2118.99ft: Connection at 2119.7
SURVEY @2064/ 13.5 INC/ 28.5 AZ/
2014.6 TVD
2122.00ft: MUD VIS 46.00
2123.00ft: MUD WEIGHT 8.80

2157.89ft: ROTATING

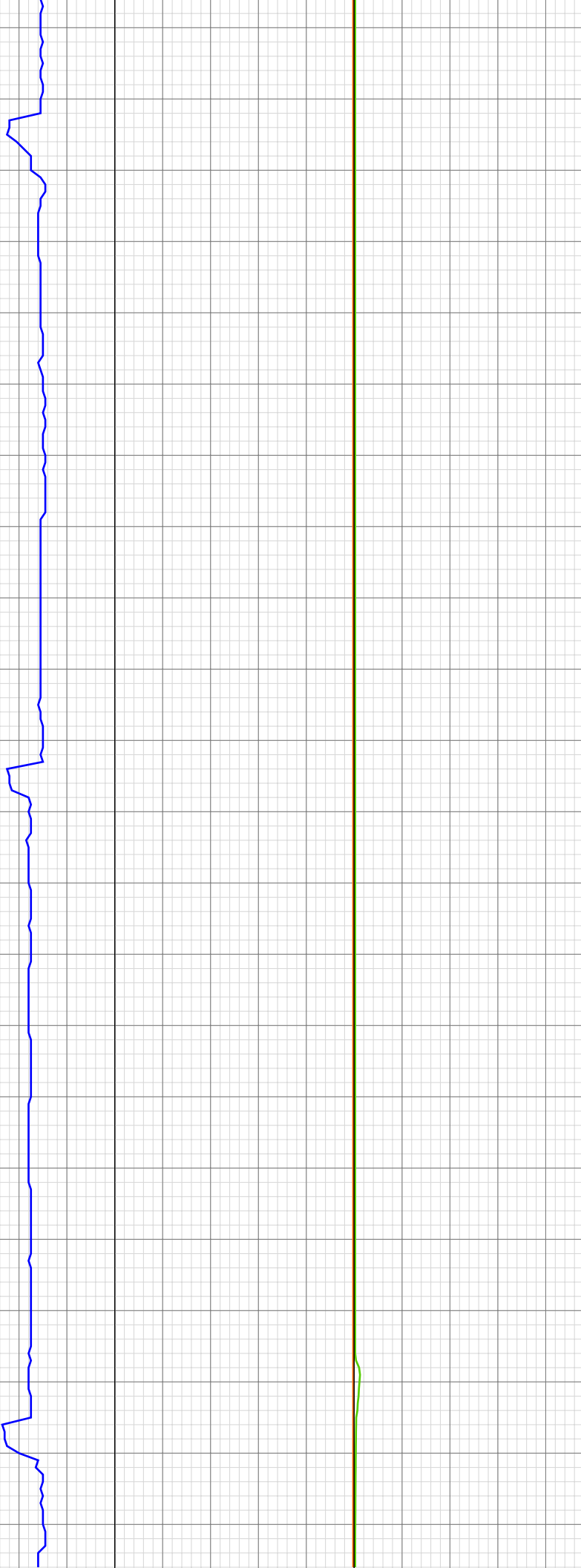
2210.00ft: ZWOB from DHC
2210.08ft: SURVEY @2156/ 15.9
INC/ 28.4 AZ/ 2103.6 TVD Connection
at 2211.3

18:27 2290
18:30 2300
18:36 2310
18:39 2320
18:43 2330
18:46 2340
18:49 2350
18:52 2360
18:55 2370
18:58 2380
19:01 2390
19:07 2400
19:09 2410
19:12 2420
19:15 2430
19:18 2440
19:21 2450
19:24 2460
19:26 2470
19:29 2480
19:35 2490
19:38 2500

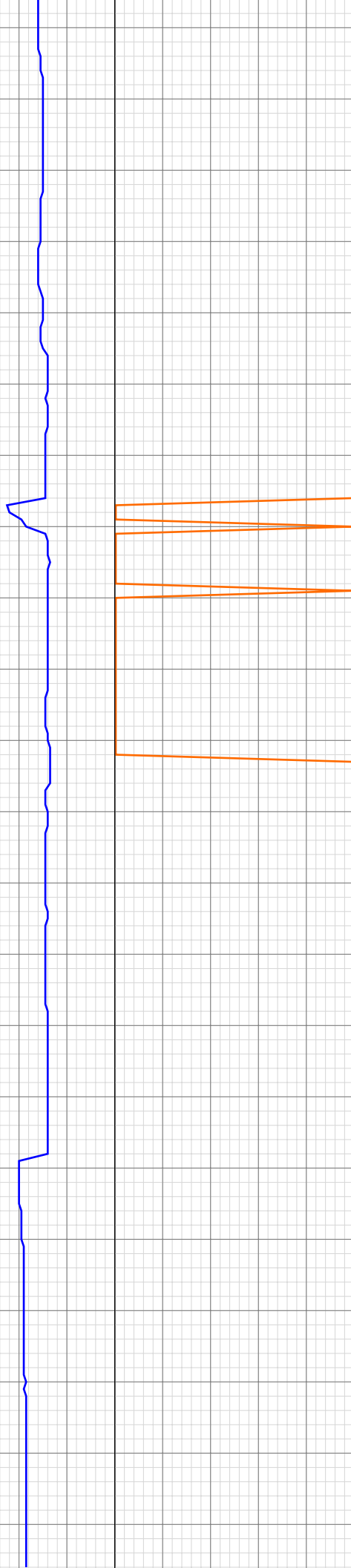
2301.00ft: ZDIFF from DHC
2301.51ft: Connection at 2302.9
2301.51ft: SURVEY@2247/ 15.6
INC/ 28.10 AZ/ 2191.2 TVD

2392.76ft: Connection at 2394.3
2392.76ft: SURVEY@2339/ 15.6
INC/ 27.7 AZ/ 2279.8 TVD
2392.76ft: ZDIFF from DHC

2482.77ft: Connection at 2485.8
2484.00ft: ZDIFF from DHC
2484.01ft: SURVEY@2430/ 15.0
INC/ 27.6 AZ/ 2367.6 TVD
2484.01ft: ZWOB from DHC



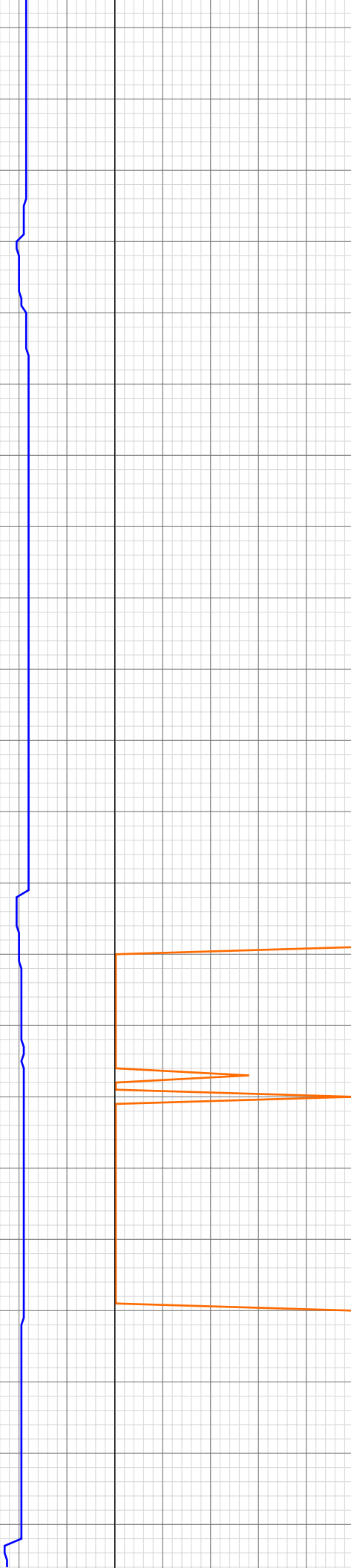
19:41 2510
19:44 2520
19:46 2530
19:49 2540
19:54 2550
19:57 2560
20:00 2570
20:09 2580
20:13 2590
20:17 2600
20:21 2610
20:24 2620
20:27 2630
20:30 2640
20:34 2650
20:37 2660
20:44 2670
20:48 2680
20:51 2690
20:54 2700
20:57 2710
21:00 2720



2572.00ft: MUD WEIGHT 8.80
2572.38ft: MUD VIS 46.00
2574.77ft: Connection at 2577.2
2575.00ft: ZDIFF from DHC
2575.52ft: SURVEY@2522/ 14.2
INC/ 27.8 AZ/ 2456.6 TVD
2575.52ft: SLIDING

2667.00ft: ZDIFF from DHC
2667.00ft: ZWOB from DHC
2667.09ft: Connection at 2668.6
2667.09ft: SURVEY@2613/ 17.1
INC/ 30.0 AZ/ 2544.2 TVD

21:03 2730
21:06 2740
21:09 2750
21:18 2760
21:21 2770
21:25 2780
21:28 2790
21:31 2800
21:34 2810
21:37 2820
21:40 2830
21:43 2840
21:45 2850
21:54 2860
21:58 2870
22:02 2880
22:06 2890
22:10 2900
22:16 2910
22:19 2920
22:21 2930
22:24 2940



2758.67ft: Connection at 2760.1
SURVEY @ 2705' / 17.2 INC / 30.6 AZ /
2632.1 TVD

2825.00ft: MUD VIS 47.00
2825.00ft: MUD WEIGHT 8.90

2850.30ft: Connection at 2851.5
2850.30ft: SURVEY @ 2796 IN 15.8
AZ 29.9 TVD 2719

2872.39ft: SLIDING

2909.82ft: ROTATING
2909.82ft: ZDIFF from DHC

2941.00ft: ZDIFF from DHC
2941.41ft: Connection at 2943.0

22:31 2950
22:33 2960
22:37 2970
22:40 2980
22:43 2990
22:45 3000
22:48 3010
22:51 3020
22:55 3030
23:04 3040
23:08 3050
23:12 3060
23:17 3070
23:20 3080
23:23 3090
23:27 3100
23:30 3110
23:34 3120
23:42 3130
23:47 3140
23:50 3150
23:53 3160

2945.65ft: SURVEY @ 2888 IN 18.7
AZ 31.7 TVD 2807

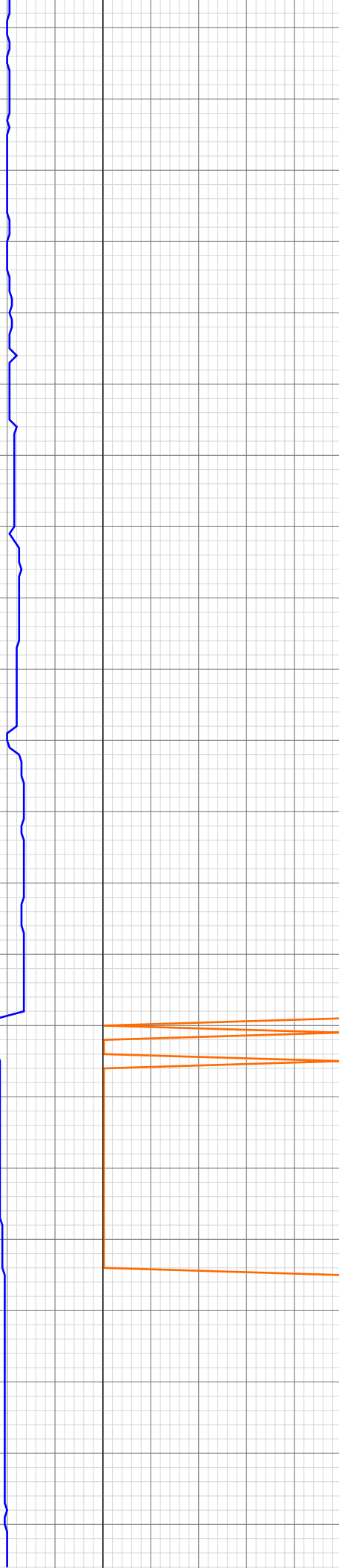
2966.00ft: 021TGAS 03090394
SW0.27 HW25.00 - 208 days on

3032.00ft: ZDIFF from DHC
3032.80ft: Connection at 3034.3
3032.80ft: SURVEY @ 2979 IN 18.7
AZ 31.2 TVD 2893
3032.80ft: X/O SWAB PUMP 2

3124.00ft: ZDIFF from DHC
3124.25ft: Connection at 3125.7
3124.25ft: SURVEY @ 3070 IN 170.8
AZ 30.2 TVD 2980
3130.00ft: ZDIFF from DHC



23:55 3170
23:58 3180
Oct 27, 2010
00:02 3190
00:05 3200
00:08 3210
00:14 3220
00:17 3230
00:20 3240
00:23 3250
00:25 3260
00:28 3270
00:31 3280
00:34 3290
00:37 3300
00:49 3310
00:55 3320
01:00 3330
01:04 3340
01:08 3350
01:11 3360
01:14 3370
01:17 3380



3215.00ft: ZDIFF from DHC
3215.72ft: Connection at 3217.0

3221.18ft: SURVEY @ 3162 IN 17.1
AZ 30.1 TVD 3068

3307.38ft: Connection at 3308.6
SURVEY @ 3253 IN 16.4 AZ 29.1
TVD 3155
3309.68ft: SLIDING

3336.84ft: MUD VIS 50.00
3337.01ft: MUD WEIGHT 9.00

3365.98ft: ROTATING

01:20 3390
01:29 3400
01:33 3410
01:36 3420
01:39 3430
01:41 3440
01:43 3450
01:46 3460
01:49 3470
01:52 3480
01:58 3490
02:01 3500
02:04 3510
02:06 3520
02:09 3530
02:12 3540
02:17 3550
02:20 3560
02:23 3570
02:27 3580
02:33 3590
02:37 3600

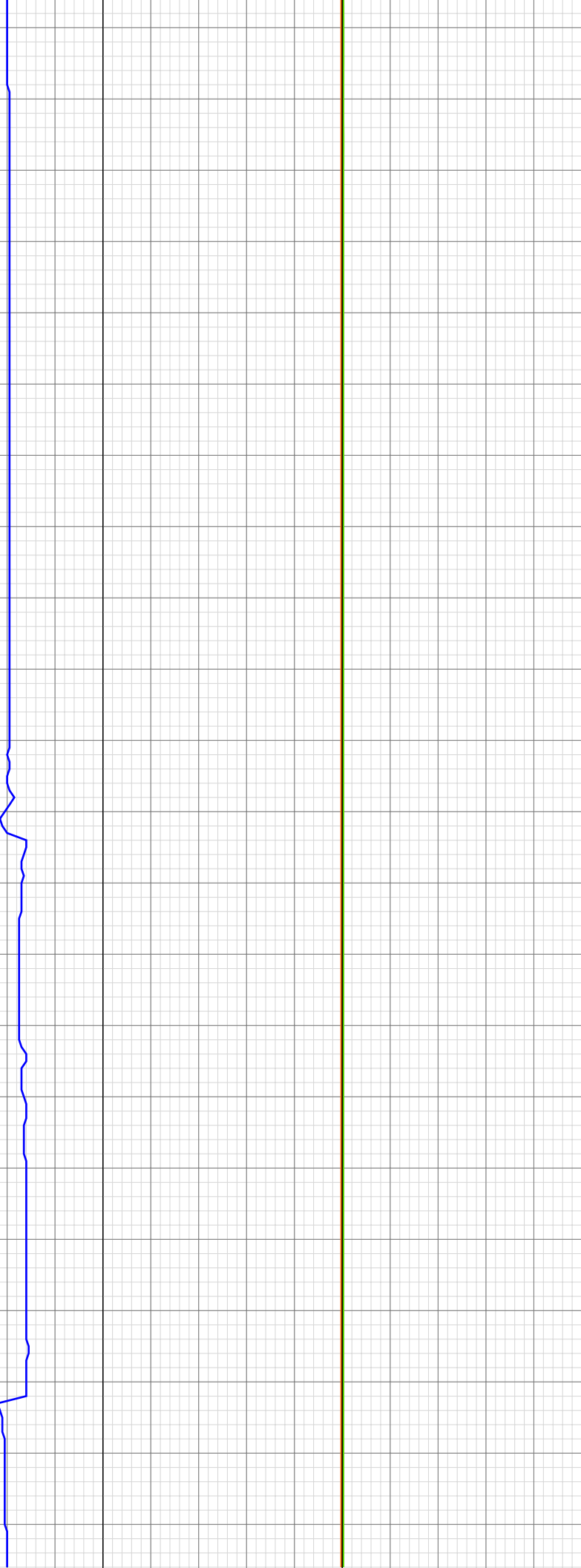
3398.00ft: ZDIFF from DHC
3398.00ft: ZWOB from DHC
3398.82ft: Connection at 3400.1
3403.38ft: SURVEY @ 3345 IN 18.8
AZ 27.2 TVD 3242

3489.99ft: ZDIFF from DHC
3490.19ft: Connection at 3491.4

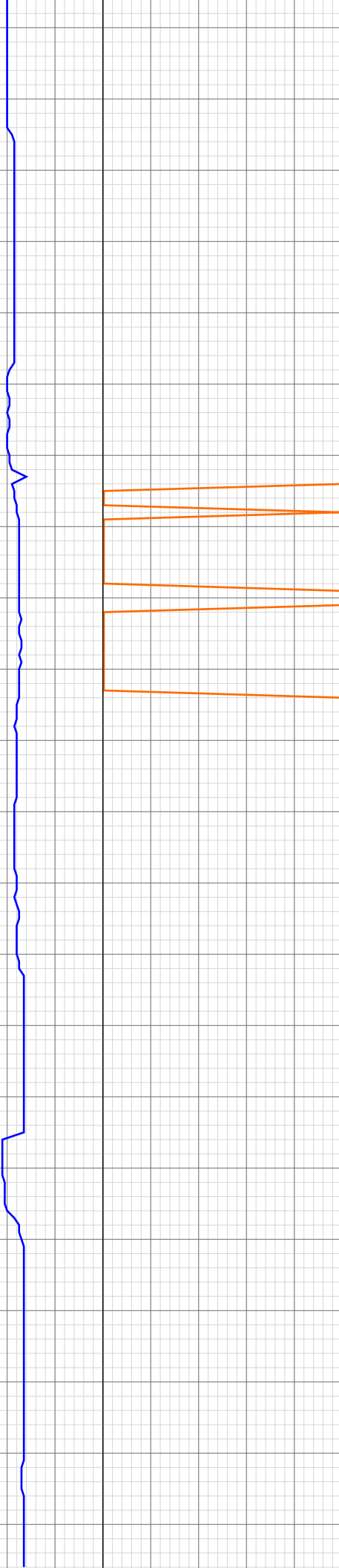
3495.90ft: SURVEY @ 3436 IN 18.2
AZ 26.3 TVD 3329

3554.99ft: MUD VIS 48.00
3554.99ft: MUD WEIGHT 9.00

3580.87ft: Connection at 3583.0
3581.56ft: SURVEY @ 3528 IN 16.7
AZ 25.4 TVD 3416



02:41 3610
02:44 3620
02:48 3630
02:50 3640
02:54 3650
02:58 3660
03:01 3670
03:12 3680
03:22 3690
03:32 3700
03:37 3710
03:39 3720
03:43 3730
03:46 3740
03:50 3750
03:53 3760
04:02 3770
04:06 3780
04:09 3790
04:12 3800
04:15 3810
04:18 3820



3672.01ft: ZDIFF from DHC
3672.61ft: Connection at 3674.5
3672.61ft: SLIDING SURVEY @ 3619
IN 16.5 AZ 24.9 TVD 3504

3764.01ft: ZDIFF from DHC
3764.01ft: ZWOB from DHC
3764.14ft: Connection at 3765.9
3764.14ft: SURVEY @ 3710 IN 16.3
AZ 27.4 TVD 3591
3764.99ft: MUD VIS 50.00
3764.99ft: MUD WEIGHT 9.10

04:21 3830
04:24 3840
04:27 3850
04:37 3860
04:40 3870
04:44 3880
04:46 3890
04:49 3900
04:52 3910
04:55 3920
04:59 3930
05:03 3940
05:14 3950
05:28 3960
05:35 3970
05:40 3980
05:44 3990
05:46 4000
05:49 4010
05:53 4020
05:56 4030
06:04 4040

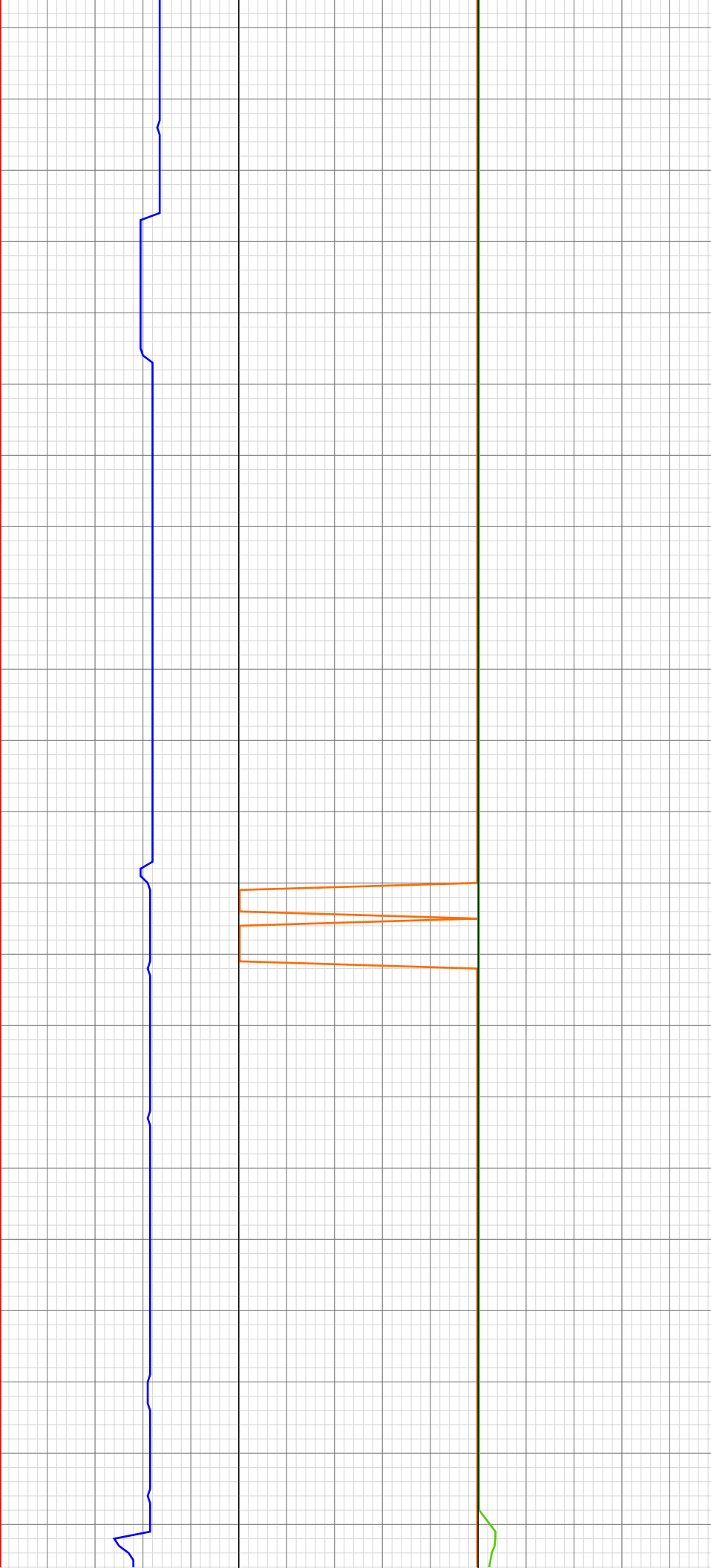
3855.68ft: Connection at 3857.2
3855.68ft: SURVEY @ 3802 IN 16.5
AZ 25.8 TVD 3679

3896.00ft: MUD VIS 52.00
3897.01ft: MUD WEIGHT 9.15

3946.78ft: Connection at 3948.6
3946.78ft: SURVEY @ 3893 IN 15.1
AZ 25.1 TVD 3767
3946.78ft: STARTING DROP
3953.12ft: SLIDING

3963.62ft: ROTATING

4037.99ft: IN TALLY: HOLE DEPTH
SET TO 4040.1
4038.19ft: Connection at 4040.1
4043.01ft: ZDiffPressure from
SideKick sk-06-03-3103



06:07 4050
06:11 4060
06:15 4070
06:18 4080
06:21 4090
06:24 4100
06:27 4110
06:30 4120
06:34 4130
06:44 4140
06:47 4150
06:50 4160
06:54 4170
06:57 4180
07:00 4190
07:03 4200
07:06 4210
07:10 4220
07:22 4230
07:32 4240
07:39 4250
07:47 4260

4043.01ft: ZWOB from SideKick
sk-06-03-3103

4069.42ft: SURVEY @ 3985 IN 13.1
AZ 24.9 TVD 3856

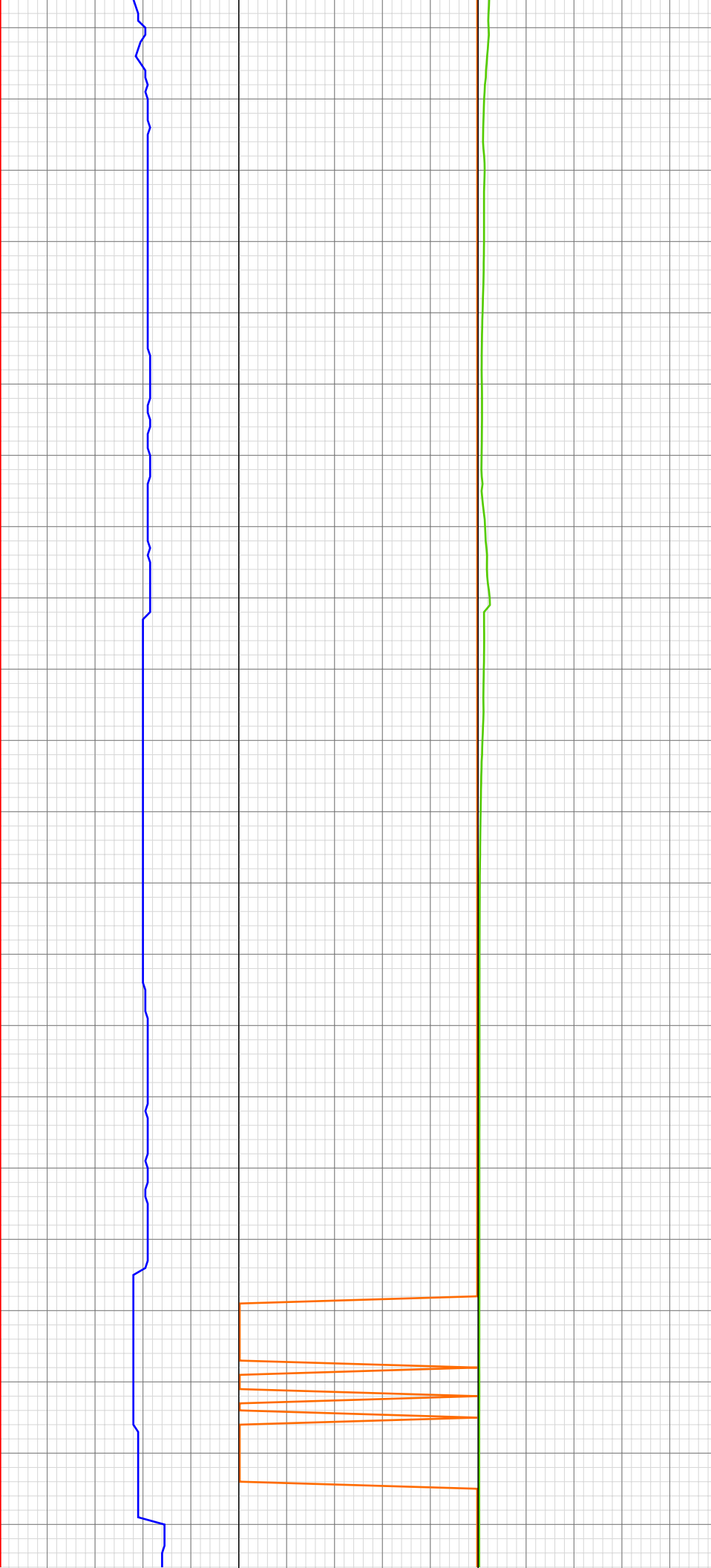
4130.02ft: Connection at 4131.7
4131.73ft: IN TALLY: HOLE DEPTH
SET TO 4131.7
4131.73ft: SURVEY @ 4076 IN 12.3
AZ 23.8 TVD 3945

4160.01ft: MUD VIS 0.50
4160.50ft: MUD WEIGHT 9.30

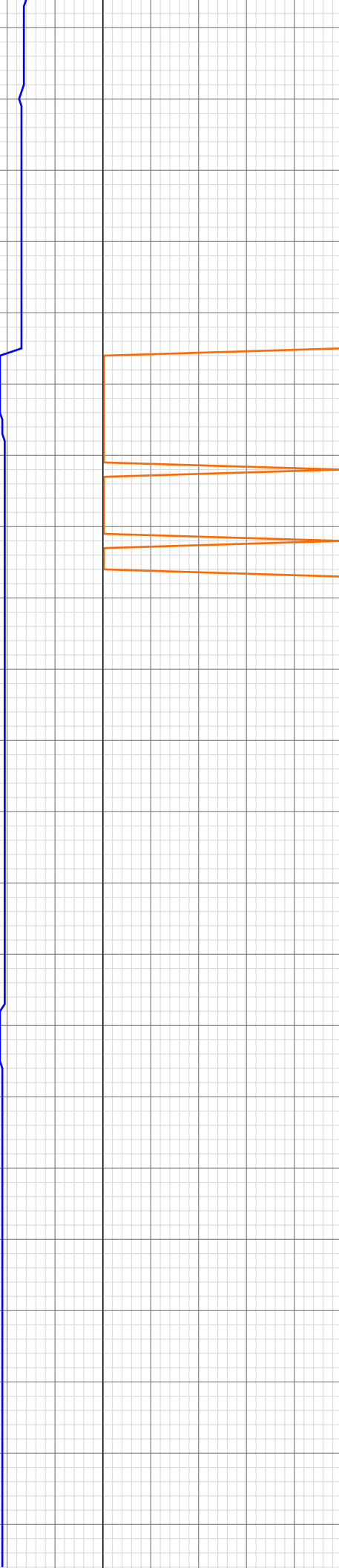
4193.08ft: SURVEY @ 4168 IN 11.0
AZ 23.0 TVD 4035

4222.54ft: Connection at 4223.3
4223.00ft: IN TALLY: HOLE DEPTH
SET TO 4223.3
4227.59ft: SLIDING

4254.89ft: ROTATING



07:51 4270
07:55 4280
07:58 4290
08:01 4300
08:04 4310
08:16 4320
08:36 4330
08:46 4340
08:54 4350
08:57 4360
09:02 4370
09:05 4380
09:09 4390
09:12 4400
09:28 4410
09:31 4420
09:35 4430
09:37 4440
09:40 4450
09:43 4460
09:46 4470
09:49 4480



4313.55ft: Connection at 4314.8
4314.01ft: MUD VIS 0.45
4314.01ft: MUD WEIGHT 9.30
4314.01ft: IN TALLY: HOLE DEPTH
SET TO 4314.8
4316.24ft: SLIDING

4347.51ft: ROTATING

4354.99ft: MUD VIS 0.46
4354.99ft: MUD WEIGHT 9.30

4406.00ft: IN TALLY: HOLE DEPTH
SET TO 4406.2
4406.23ft: SPR
4406.23ft: SURVEY @ 4351 IN 9.2
AZ 23.9 TVD 4215
4406.33ft: Connection at 4406.2

4483.99ft: MUD VIS 0.45
4483.99ft: MUD WEIGHT 9.30

09:52 4490
10:01 4500
10:03 4510
10:06 4520
10:09 4530
10:12 4540
10:15 4550
10:19 4560
10:22 4570
10:25 4580
10:34 4590
10:36 4600
10:40 4610
10:43 4620
10:46 4630
10:49 4640
10:52 4650
10:55 4660
10:58 4670
11:05 4680
11:08 4690
11:11 4700

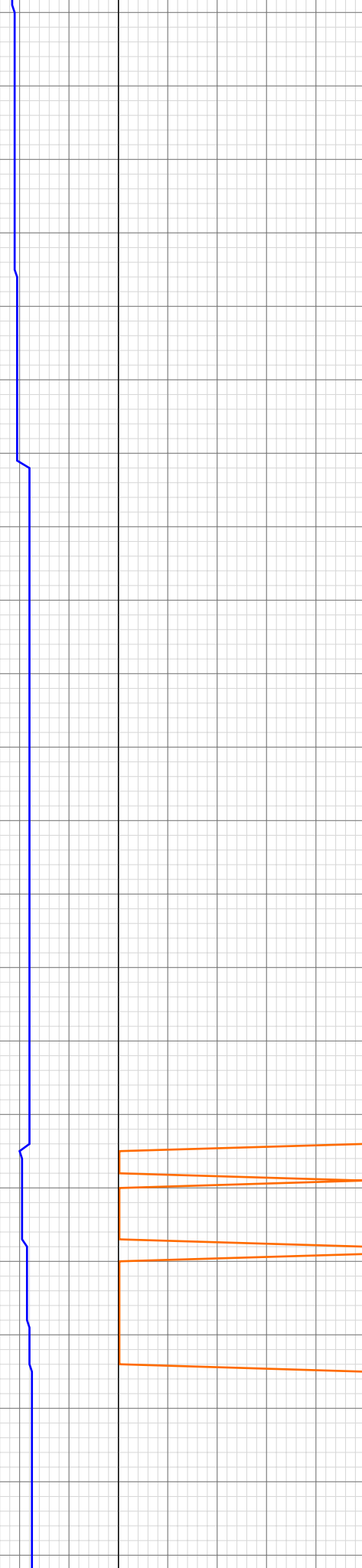
4483.99ft: MUD WEIGHT 9.30
4497.01ft: IN TALLY: HOLE DEPTH SET TO 4497.7
4497.01ft: ZDiffPressure from SideKick sk-06-03-3103
4497.01ft: ZWOB from SideKick sk-06-03-3103
4497.83ft: Connection at 4497.7
4499.87ft: SURVEY @ 4442 IN 9.3 AZ 24.2 TVD 4305

4588.81ft: Connection at 4589.1
4589.01ft: IN TALLY: HOLE DEPTH SET TO 4589.2
4589.14ft: SURVEY @ 4534 IN 8.7 AZ 23.3 TVD 4396

4664.99ft: MUD VIS 0.42
4666.17ft: MUD WEIGHT 9.20

4678.87ft: Connection at 4680.6
4679.99ft: IN TALLY: HOLE DEPTH SET TO 4680.6
4680.61ft: SURVEY@4625/ 8.4 INC/ 21.5 AZ/ 4486.2 TVD

11:15 4710
11:19 4720
11:22 4730
11:26 4740
11:28 4750
11:32 4760
11:35 4770
11:43 4780
11:47 4790
11:50 4800
11:53 4810
11:56 4820
12:00 4830
12:03 4840
12:07 4850
12:11 4860
12:23 4870
12:36 4880
12:48 4890
12:55 4900
12:59 4910
13:02 4920



4771.00ft: IN TALLY: HOLE DEPTH
SET TO 4772.0
4771.95ft: Connection at 4772.0
4771.98ft: SURVEY@4716/ 7.7 INC/
18.9 AZ/ 4576.3 TVD

4793.01ft: MUD VIS 0.41
4794.00ft: MUD WEIGHT 9.20

4862.11ft: Connection at 4863.6
4862.99ft: IN TALLY: HOLE DEPTH
SET TO 4863.6
4863.58ft: SURVEY@4808' /7.5 INC
/18.0 AZ/ 4667.5 TVD
4863.58ft: SLIDING

4891.01ft: MUD VIS 0.43
4891.01ft: MUD WEIGHT 9.30

4895.57ft: ROTATING

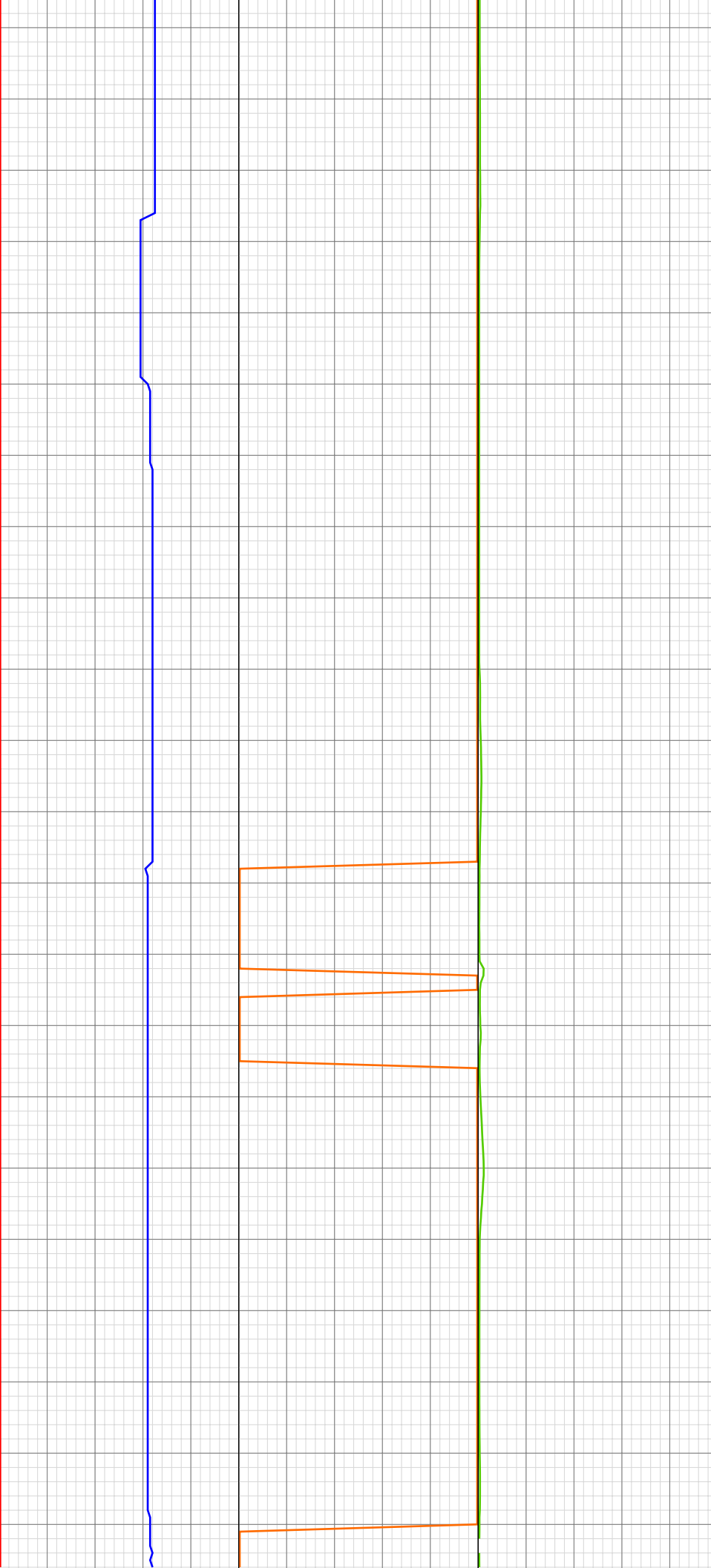
13:07 4930
13:11 4940
13:14 4950
13:21 4960
13:24 4970
13:28 4980
13:31 4990
13:33 5000
13:36 5010
13:39 5020
13:43 5030
13:46 5040
13:56 5050
14:06 5060
14:21 5070
14:31 5080
14:34 5090
14:39 5100
14:43 5110
14:46 5120
14:49 5130
14:58 5140

4953.64ft: Connection at 4955.2
4954.99ft: IN TALLY: HOLE DEPTH
SET TO 4955.2
4954.99ft: ZWOB from SideKick
sk-06-03-3103
4954.99ft: ZDiffPressure from
SideKick sk-06-03-3103
4955.18ft: SURVEY@4900/ 7.2 INC/
32.5 AZ/ 4758.8 TVD

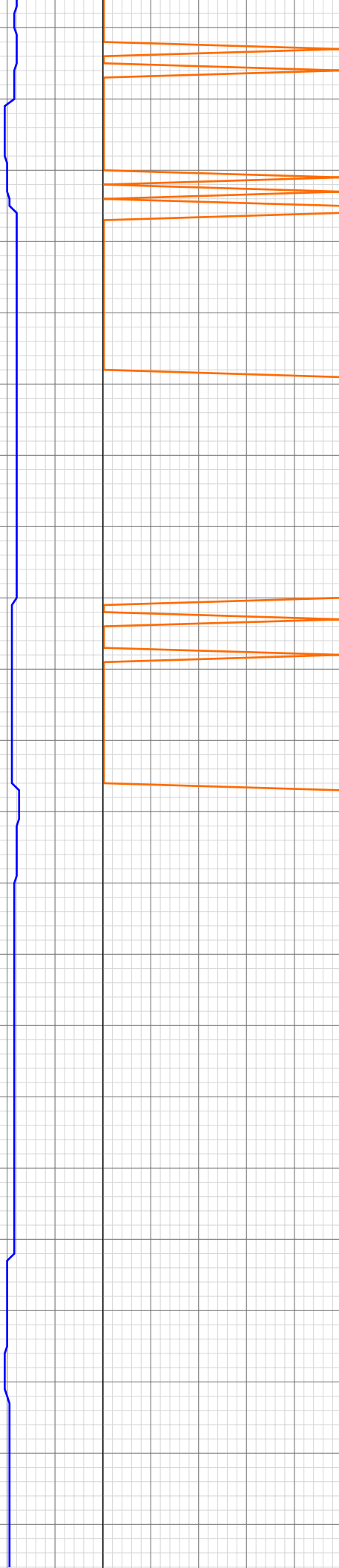
5046.00ft: MUD VIS 0.42
5046.00ft: MUD WEIGHT 9.20
5046.49ft: Connection at 5046.7
5046.69ft: IN TALLY: HOLE DEPTH
SET TO 5046.7
5046.69ft: SLIDING

5075.49ft: ROTATING

5133.99ft: MUD VIS 0.41
5133.99ft: MUD WEIGHT 9.20
5135.76ft: Connection at 5138.1
5137.99ft: ZDiffPressure from
SideKick sk-06-03-3103
5137.99ft: ZWOB from SideKick
sk-06-03-3103
5138.09ft: IN TALLY: HOLE DEPTH



15:06 5150
15:28 5160
15:43 5170
15:55 5180
16:04 5190
16:14 5200
16:17 5210
16:21 5220
16:50 5230
16:57 5240
17:04 5250
17:12 5260
17:15 5270
17:18 5280
17:22 5290
17:25 5300
17:28 5310
17:31 5320
17:40 5330
17:42 5340
17:45 5350
17:48 5360



SET TO 5138.1
5138.09ft: SLIDING

5173.00ft: MUD VIS 0.42
5173.00ft: MUD WEIGHT 9.20

5198.03ft: ROTATING
5203.67ft: ROTATING

5229.86ft: RIG SERVICE
5229.86ft: SURVEY@5174/ 3.2 INC/
46.6 AZ/ 5031.3 TVD
5229.86ft: Connection at 5229.6
5229.86ft: SLIDING

5256.76ft: ROTATING

5275.98ft: MUD VIS 0.52
5275.98ft: MUD WEIGHT 9.20

5321.00ft: IN TALLY: HOLE DEPTH
SET TO 5321.1
5321.10ft: Connection at 5321.1

17:52 5370
17:56 5380
18:01 5390
18:07 5400
18:10 5410
18:36 5420
18:44 5430
18:53 5440
19:07 5450
19:12 5460
19:17 5470
19:28 5480
19:39 5490
19:52 5500
Oct 28, 2010
06:37 5510
06:40 5520
06:53 5530
06:56 5540
06:59 5550
07:03 5560
07:09 5570
07:13 5580



5412.01ft: ZWOB from SideKick sk-06-03-3103
5412.01ft: ZWOB from SideKick sk-06-03-3103
5412.50ft: SPR
5412.50ft: B.O.P DRILL 1 MIN. 40 SEC.
5412.50ft: Connection at 5412.6
5412.50ft: SLOW FOR FORMATION CHANGE

5437.76ft: SURVEY @ 5266 IN 1.3 AZ 111.6 TVD 5123

5446.00ft: MUD VIS 0.44
5446.00ft: MUD WEIGHT 9.25
5448.00ft: ZDIFF from DHC

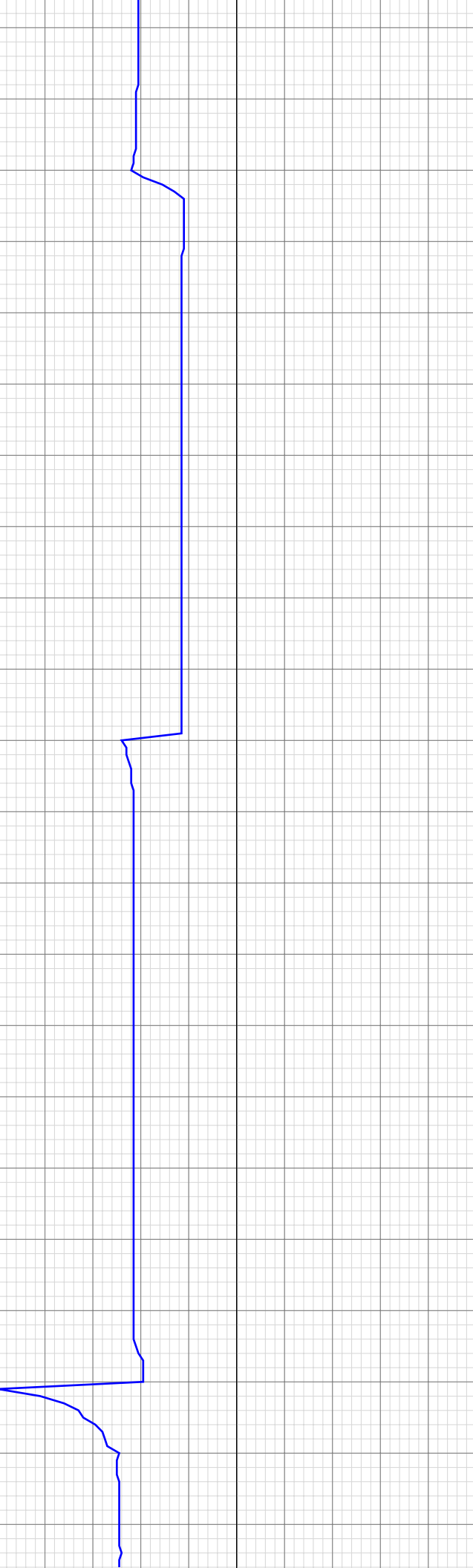
5473.85ft: SURVEY @ 5357 IN 1.1 AZ 100.5 TVD 5214
5504.00ft: IN TALLY: HOLE DEPTH SET TO 5504.1
5504.00ft: ZERO ALL PUMPS from SideKick sk-06-03-3103
5504.00ft: MUD VIS 0.44
5504.00ft: MUD WEIGHT 9.25
5504.00ft: ZERO ALL PUMPS from SideKick sk-06-03-3103
5504.00ft: 021TGAS 03090394 SW0.27 HW25.00 - 209 days on
5504.00ft: BIT DEPTH CHANGED TO 561.0 FEET

5504.00ft: ZERO ALL PUMPS from SideKick sk-06-03-3103
5504.00ft: ZERO ALL PUMPS from SideKick sk-06-03-3103
5504.00ft: ZERO ALL PUMPS from SideKick sk-06-03-3103
5504.00ft: ZWOB from SideKick sk-06-03-3103

5504.00ft: ZDiffPressure from SideKick sk-06-03-3103
5504.04ft: CIR. BU
5504.04ft: FLOW CHECK
5504.04ft: NO FLOW
5504.04ft: PUMP SLUG, BLOW OUT TOPDRIVE
5504.04ft: FLOW CHECK
5504.04ft: NO FLOW
5504.04ft: FLOW CHECK
5504.04ft: PULL RR
5504.04ft: FILL PIPE
5504.04ft: ZERO ALL PUMPS from SideKick sk-06-03-3103
5504.04ft: ZERO ALL PUMPS from SideKick sk-06-03-3103
5504.04ft: Connection at 5505.1
5504.99ft: IN TALLY: HOLE DEPTH SET TO 5505.1

5508.50ft: SURVEY@5450/ 1.4 INC/ 122.4 AZ/ 5307.2 TVD
5529.00ft: ZWOB from SideKick sk-06-03-3103
5529.82ft: ZDiffPressure from SideKick sk-06-03-3103

07:16 5590
07:37 5600
07:42 5610
07:46 5620
07:52 5630
07:56 5640
07:59 5650
08:02 5660
08:04 5670
08:08 5680
08:17 5690
08:21 5700
08:25 5710
08:30 5720
08:34 5730
08:38 5740
08:42 5750
08:46 5760
08:52 5770
09:09 5780
09:24 5790
09:28 5800



5596.65ft: IN TALLY: HOLE DEPTH
SET TO 5596.7 Connection at 5596.7
5596.65ft: SURVEY@5541/ 0.7 INC/
124.6 AZ/ 5398.1 TVD
5597.01ft: ZDiffPressure from
SideKick sk-06-03-3103
5597.01ft: ZWOB from SideKick
sk-06-03-3103

5686.29ft: Connection at 5688.2
5687.01ft: MUD WEIGHT 10.20
5687.30ft: MUD VIS 0.45
5687.99ft: IN TALLY: HOLE DEPTH
SET TO 5688.2
5687.99ft: ZDiffPressure from
SideKick sk-06-03-3103
5688.25ft: SURVEY@5633/ 0.7 INC/
126.2 AZ/ 5490.1 TVD

5779.00ft: IN TALLY: HOLE DEPTH
SET TO 5779.7
5779.20ft: Connection at 5779.7
5779.69ft: SURVEY@5724/ 0.2 INC/
132.4 AZ/ 5581.1 TVD

5789.99ft: MUD VIS 0.41
5790.16ft: MUD WEIGHT 9.60

09:32 5810
09:35 5820
09:40 5830
09:44 5840
09:48 5850
09:53 5860
09:57 5870
10:06 5880
10:10 5890
10:13 5900
10:16 5910
10:21 5920
10:25 5930
10:29 5940
10:33 5950
10:38 5960
11:19 5970
11:32 5980
11:42 5990
11:50 6000
11:56 6010
12:01 6020

5809.35ft: PUMP SWEEP

5866.99ft: MUD VIS 0.41
5866.99ft: MUD WEIGHT 9.60
5871.00ft: IN TALLY: HOLE DEPTH SET TO 5871.1
5871.00ft: ZDiffPressure from SideKick sk-06-03-3103
5871.00ft: ZWOB from SideKick sk-06-03-3103
5871.10ft: Connection at 5871.1
5871.10ft: SURVEY@5816/ 0.7 INC/ 215.4 AZ/ 5673.1 TVD

5961.98ft: Connection at 5962.7
5962.01ft: IN TALLY: HOLE DEPTH SET TO 5962.7
5962.70ft: SURVEY@5906/ 0.7 INC/ 248.5 AZ/ 5763.1 TVD
5962.99ft: MUD VIS 0.40
5962.99ft: MUD WEIGHT 9.70
5963.45ft: L/D 2 WASHED OUT JNTS
5963.45ft: SLIDING

5992.09ft: ROTATING

6002.00ft: MUD VIS 0.41
6002.00ft: MUD WEIGHT 9.80



12:05 6030
12:10 6040
12:15 6050
12:32 6060
12:52 6070
13:08 6080
13:23 6090
13:28 6100
13:33 6110
13:38 6120
13:45 6130
13:51 6140
14:07 6150
14:21 6160
14:34 6170
14:49 6180
14:53 6190
14:56 6200
15:00 6210
15:03 6220
15:07 6230
15:18 6240



6052.99ft: IN TALLY: HOLE DEPTH
SET TO 6054.1
6054.13ft: Connection at 6054.1
6054.13ft: SURVEY@5999/ 1.1 INC/
307.2 AZ/ 5856.1 TVD
6054.13ft: SLIDING

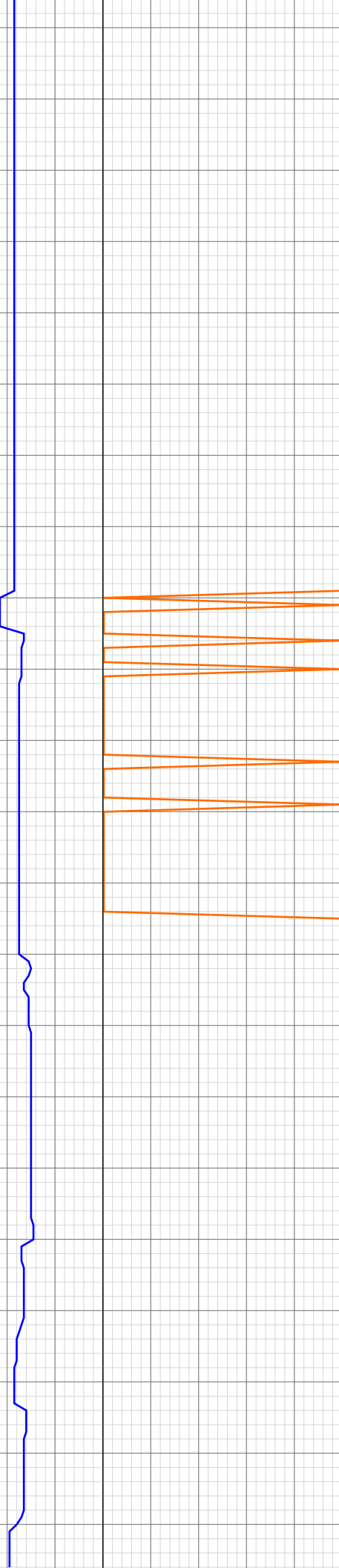
6085.99ft: MUD VIS 0.42
6085.99ft: MUD WEIGHT 9.80
6086.55ft: ROTATING

6145.01ft: IN TALLY: HOLE DEPTH
SET TO 6145.6
6145.01ft: MUD VIS 0.44
6145.01ft: MUD WEIGHT 9.90
6145.28ft: Connection at 6145.6
SURVEY@6090/ 0.7 INC/ 345.5 AZ/
5947.1 TVD
6148.62ft: SLIDING

6175.98ft: MUD VIS 0.43
6175.98ft: MUD WEIGHT 9.90
6178.81ft: ROTATING

6237.04ft: IN TALLY: HOLE DEPTH
SET TO 6237.0
6237.04ft: SURVEY@6182/ 1.4 INC/
30.0 AZ/ 6039.1 TVD
6237.30ft: Connection at 6237.0

15:22 6250
15:25 6260
15:28 6270
15:33 6280
15:37 6290
15:41 6300
15:46 6310
15:52 6320
16:21 6330
16:33 6340
16:46 6350
16:56 6360
17:07 6370
17:17 6380
17:22 6390
17:26 6400
17:31 6410
17:41 6420
17:46 6430
17:50 6440
17:54 6450
17:57 6460



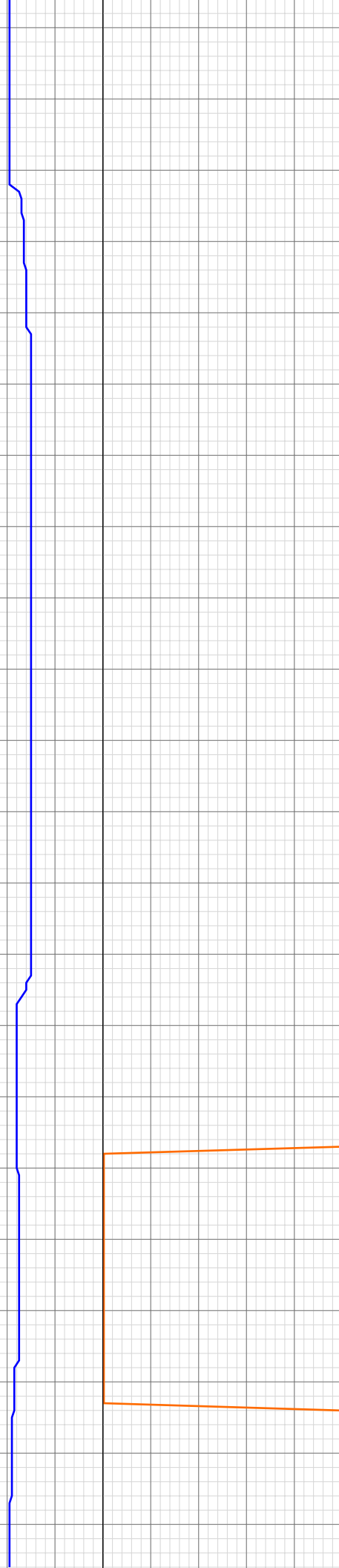
6328.25ft: RIG SERVICE
6328.25ft: Connection at 6328.5
SLIDING SURVEY@6273/ 0.5 INC/
16.7 AZ/ 6130.1 TVD
6335.01ft: MUD VIS 9.90
6335.01ft: MUD WEIGHT 9.90

6356.99ft: MUD VIS 0.51
6356.99ft: MUD WEIGHT 10.00

6374.80ft: ROTATING

6418.11ft: Connection at 6420.0
6419.00ft: IN TALLY: HOLE DEPTH
SET TO 6420.0
6419.00ft: ZDiffPressure from
SideKick sk-06-03-3103
6419.98ft: SURVEY@6364/ 1.8 INC/
39.1 AZ/ 6221.1 TVD
6419.98ft: ZWOB from SideKick
sk-06-03-3103

18:03 6470
18:08 6480
18:12 6490
18:16 6500
18:21 6510
18:37 6520
18:41 6530
18:45 6540
18:48 6550
18:52 6560
18:56 6570
19:00 6580
19:05 6590
19:08 6600
19:23 6610
19:28 6620
19:35 6630
19:43 6640
19:49 6650
19:56 6660
20:07 6670
20:12 6680



6511.29ft: SURVEY @6456 IN 1.8
AZ 35.2 TVD 6313
6511.29ft: Connection at 6511.3
6512.01ft: IN TALLY: HOLE DEPTH
SET TO 6511.3
6512.01ft: MUD VIS 0.44
6512.01ft: MUD WEIGHT 10.00
6512.01ft: ZWOB from SideKick
sk-06-03-3103
6512.01ft: ZDiffPressure from
SideKick sk-06-03-3103

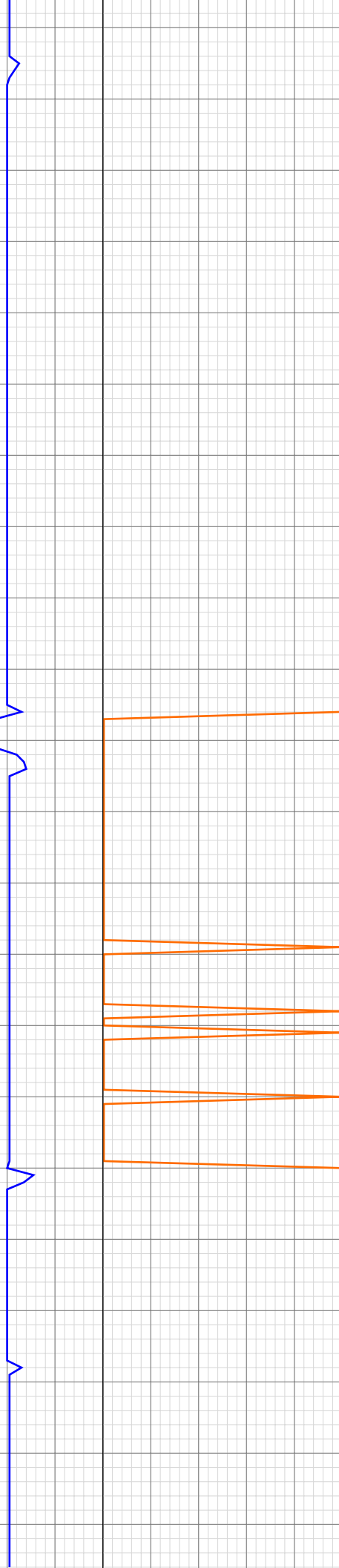
6569.00ft: PUMP SWEEP

6602.00ft: ZWOB from SideKick
sk-06-03-3103
6602.00ft: ZDiffPressure from
SideKick sk-06-03-3103
6602.62ft: Connection at 6602.9
6602.62ft: ROTATING
6606.99ft: ZERO ALL PUMPS from
SideKick sk-05-05-1268

6628.05ft: SLIDING

6662.99ft: ZDiffPressure from
SideKick sk-06-03-3103
6663.45ft: ROTATING

20:17 6690
20:32 6700
20:38 6710
20:42 6720
20:48 6730
20:53 6740
20:58 6750
21:03 6760
21:10 6770
21:16 6780
21:38 6790
21:47 6800
21:57 6810
22:08 6820
22:20 6830
22:29 6840
22:39 6850
22:45 6860
22:51 6870
23:07 6880
23:11 6890
23:15 6900



6694.00ft: IN TALLY: HOLE DEPTH SET TO 6694.1
6694.00ft: ZDiffPressure from SideKick sk-06-03-3103
6694.00ft: ZWOB from SideKick sk-06-03-3103
6694.06ft: Connection at 6694.1
6694.06ft: SURVEY @ 6639 IN .6 AZ 352.3
6706.00ft: MUD VIS 0.50
6706.00ft: MUD WEIGHT 10.00

6715.39ft: PUMP SWEEP
6720.08ft: PUMP OUT CELLAR
6725.00ft: ZERO ALL PUMPS from SideKick sk-05-05-1268

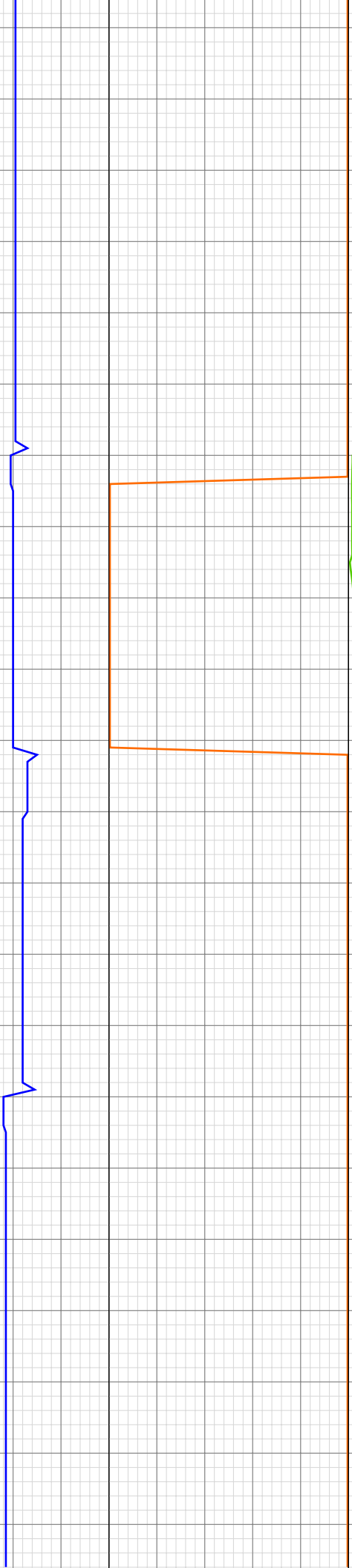
6764.01ft: MUD WEIGHT 10.00
6764.04ft: MUD VIS 0.55

6785.01ft: ZDiffPressure from SideKick sk-06-03-3103
6785.07ft: Connection at 6785.7
6788.03ft: SURVEY @ 6730 IN .3 AZ 280.5 TVD 6586
6791.60ft: SLIDING

6849.02ft: 021TGAS 03090394 SW0.27 HW25.00 - 210 days on
6849.02ft: ZDiffPressure from SideKick sk-06-03-3103
6849.28ft: ZWOB from SideKick sk-06-03-3103
6856.00ft: MUD VIS 0.56
6856.53ft: MUD WEIGHT 10.05

6877.00ft: IN TALLY: HOLE DEPTH SET TO 6877.2
6877.00ft: ZDiffPressure from SideKick sk-06-03-3103
6877.00ft: ZWOB from SideKick sk-06-03-3103
6877.23ft: Connection at 6877.2
6877.23ft: SURVEY @ 6822 IN .4 AZ 273.8 TVD 6679

23:19 6910
23:23 6920
23:29 6930
23:34 6940
23:40 6950
23:45 6960
Oct 29, 2010
00:02 6970
00:11 6980
00:21 6990
00:33 7000
00:44 7010
00:57 7020
01:03 7030
01:09 7040
01:14 7050
01:32 7060
01:37 7070
01:44 7080
01:53 7090
01:59 7100
02:03 7110
02:10 7120



6968.01ft: ZWOB from SideKick
sk-06-03-3103
6968.01ft: ZDiffPressure from
SideKick sk-06-03-3103
6968.64ft: SURVEY @ 6913 IN 1.3
AZ 233.3 TVD 6770 Connection at
6968.8
6976.58ft: SLIDING

6996.00ft: MUD VIS 0.45
6996.00ft: MUD WEIGHT 10.05

7010.99ft: ZWOB from SideKick
sk-06-03-3103

7058.01ft: ZWOB from SideKick
sk-06-03-3103
7058.01ft: ZDiffPressure from
SideKick sk-06-03-3103

7067.85ft: Connection at 7060.2

7073.52ft: ROTATING
7075.16ft: SURVEY @ 7005 IN .9
AZ 228 TVD 6862

7108.99ft: ZERO ALL PUMPS from
SideKick sk-05-05-1268

7119.82ft: SURVEY @ 8011 IN 1.1
Az 20.4 TVD 7867

02:20 7130
02:25 7140
02:30 7150
02:52 7160
03:03 7170
03:09 7180
03:13 7190
03:18 7200
03:24 7210
03:28 7220
03:34 7230
03:40 7240
04:02 7250
04:13 7260
04:25 7270
04:40 7280
04:53 7290
05:01 7300
05:15 7310
05:26 7320
05:39 7330
05:57 7340

7129.00ft: MUD VIS 0.50
7129.99ft: MUD WEIGHT 10.00

7150.98ft: ZDiffPressure from SideKick sk-06-03-3103
7150.98ft: ZWOB from SideKick sk-06-03-3103
7151.38ft: Connection at 7151.8
7151.38ft: SURVEY @ 7096 IN .8
AZ 248.9 TVD 6953

7166.83ft: ZDiffPressure from SideKick sk-06-03-3103

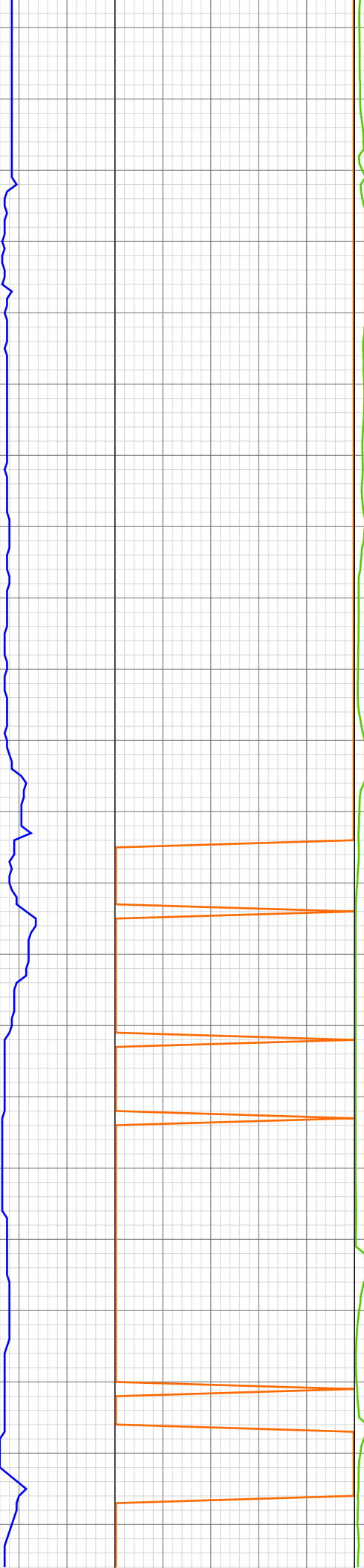
7204.00ft: MUD VIS 0.53
7204.00ft: MUD WEIGHT 10.00

7241.99ft: ZDiffPressure from SideKick sk-06-03-3103
7241.99ft: ZDiffPressure from SideKick sk-06-03-3103
7243.41ft: Connection at 7243.3

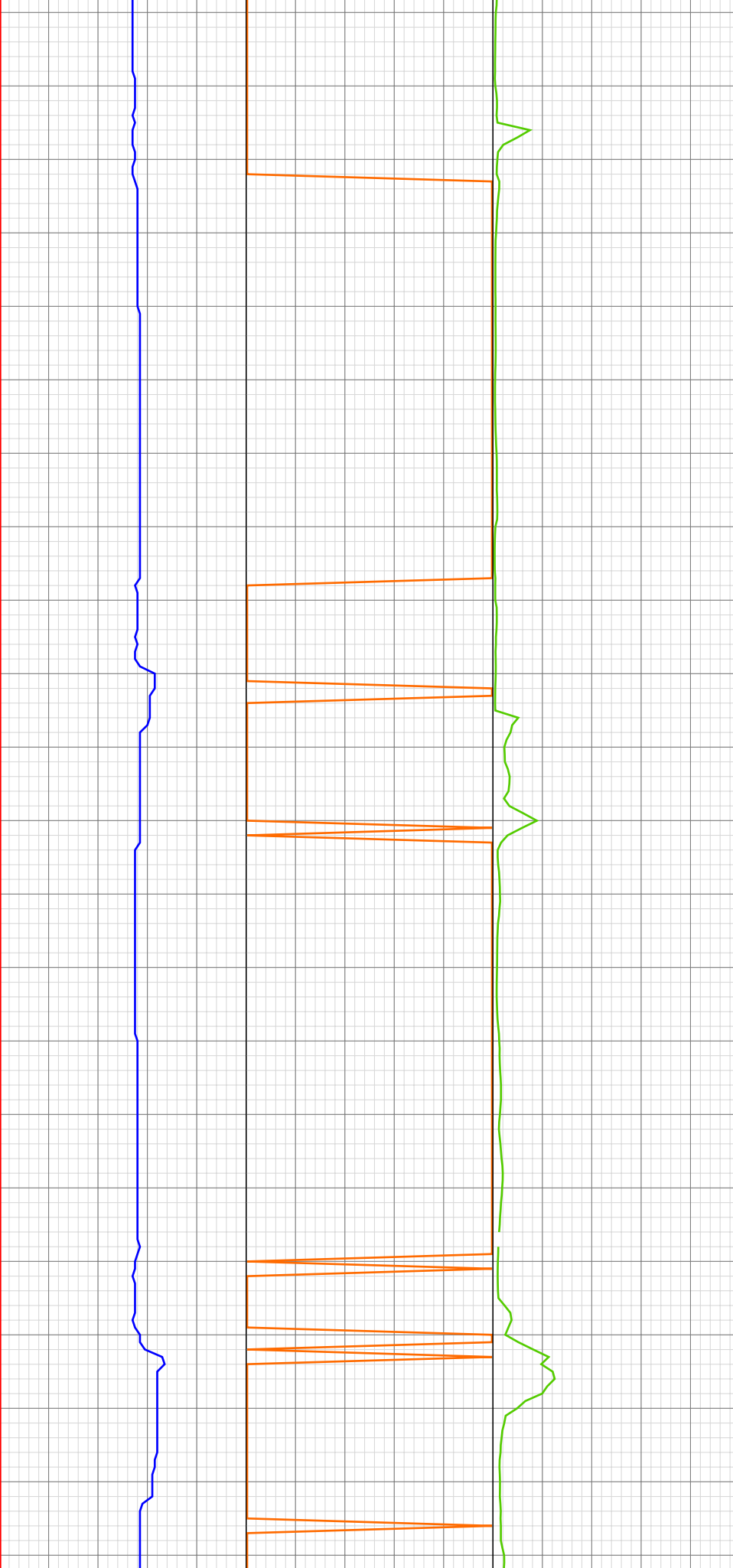
7261.29ft: SLIDING

7299.02ft: MUD VIS 0.43
7300.00ft: MUD WEIGHT 10.05

7325.98ft: ZDiffPressure from SideKick sk-06-03-3103
7331.99ft: IN TALLY: HOLE DEPTH SET TO 7334.8
7331.99ft: ZWOB from SideKick sk-06-03-3103
7332.41ft: Connection at 7334.8
7334.88ft: SURVEY @ 7279 IN 2.3
AZ 256.8 TVD 7135
7334.88ft: ZDiffPressure from SideKick sk-06-03-3103
7334.88ft: SLIDING



06:10 7350
06:28 7360
06:48 7370
07:04 7380
07:09 7390
07:15 7400
07:20 7410
07:28 7420
07:48 7430
08:09 7440
08:28 7450
08:44 7460
08:56 7470
09:02 7480
09:08 7490
09:13 7500
09:18 7510
09:31 7520
09:51 7530
10:06 7540
10:17 7550
10:30 7560



7350.98ft: MUD WEIGHT 10.10
7351.21ft: MUD VIS 0.41

7372.24ft: ROTATING

7382.09ft: PUMP SWEEP

7399.02ft: MUD VIS 0.42
7399.02ft: MUD WEIGHT 10.10

7425.33ft: Connection at 7426.4
7425.98ft: IN TALLY: HOLE DEPTH SET TO 7426.4
7425.98ft: ZDiffPressure from SideKick sk-06-03-3103
7425.98ft: ZWOB from SideKick sk-06-03-3103
7426.38ft: SURVEY@7371'/ 2.0 INC/ 219.8 AZ/ 7227.8 TVD
7426.90ft: SLIDING

7439.99ft: MUD VIS 0.44
7439.99ft: MUD WEIGHT 10.01

7462.01ft: MUD VIS 0.44
7462.01ft: MUD WEIGHT 10.10
7462.76ft: ROTATING

7475.10ft: PUMP SWEEP

7516.99ft: IN TALLY: HOLE DEPTH SET TO 7517.9
7517.06ft: Connection at 7517.9
7517.95ft: SURVEY@7462'/ 2.1 INC/ 211.1 AZ/ 7318.7 TVD
7517.95ft: SLIDING

7533.01ft: MUD VIS 0.45
7533.01ft: MUD WEIGHT 10.10

10:44 7570
10:51 7580
10:57 7590
11:01 7600
11:07 7610
11:37 7620
11:56 7630
12:18 7640
12:23 7650
12:30 7660
12:35 7670
12:42 7680
12:48 7690
12:54 7700
13:19 7710
13:33 7720
13:44 7730
14:00 7740
14:05 7750
14:10 7760
14:15 7770
14:23 7780



7569.49ft: ROTATING

7591.01ft: MUD VIS 0.48
7591.01ft: MUD WEIGHT 10.00

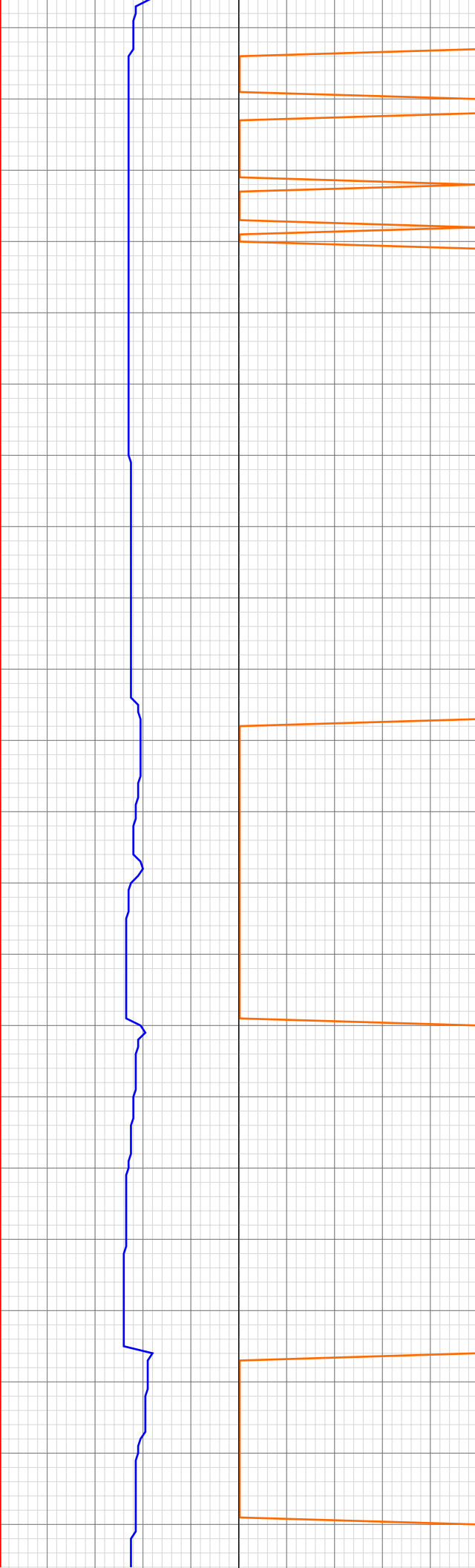
7609.45ft: SURVEY@7554/ 1.4 INC/
177.7 AZ/ 7410.7 TVD
7609.45ft: SLIDING
7610.01ft: IN TALLY: HOLE DEPTH
SET TO 7609.4
7610.24ft: Connection at 7609.4

7635.99ft: MUD VIS 0.48
7637.01ft: MUD WEIGHT 10.10
7640.49ft: ROTATING

7700.89ft: IN TALLY: HOLE DEPTH
SET TO 7700.9 Connection at 7700.9
7700.89ft: SLIDING

7739.99ft: MUD VIS 0.48
7739.99ft: MUD WEIGHT 10.30
7739.99ft: ZWOB from SideKick
sk-06-03-3103
7740.85ft: ZDiffPressure from
SideKick sk-06-03-3103
7740.85ft: ROTATING
7742.39ft: PUMP SWEEP

14:28 7790
14:46 7800
15:02 7810
15:34 7820
15:46 7830
15:51 7840
15:56 7850
16:01 7860
16:07 7870
16:15 7880
16:54 7890
17:05 7900
17:18 7910
17:33 7920
17:54 7930
18:01 7940
18:07 7950
18:15 7960
18:21 7970
18:50 7980
19:09 7990
19:19 8000



7790.55ft: Connection at 7792.2
7791.99ft: IN TALLY: HOLE DEPTH
SET TO 7792.2
7792.22ft: SLIDING

7810.99ft: MUD VIS 0.48
7810.99ft: MUD WEIGHT 10.03

7820.77ft: ROTATING

7830.77ft: PUMP SWEEP

7854.50ft: MUD VIS 0.48
7856.43ft: MUD WEIGHT 10.30

7883.76ft: SURVEY@7828/ 1.2 INC/
46.5 AZ/ 7684.7 TVD
7883.76ft: Connection at 7883.8
7883.99ft: IN TALLY: HOLE DEPTH
SET TO 7883.8
7884.09ft: RIG SERVICE SPR

7893.01ft: MUD VIS 0.48
7893.67ft: MUD WEIGHT 10.30

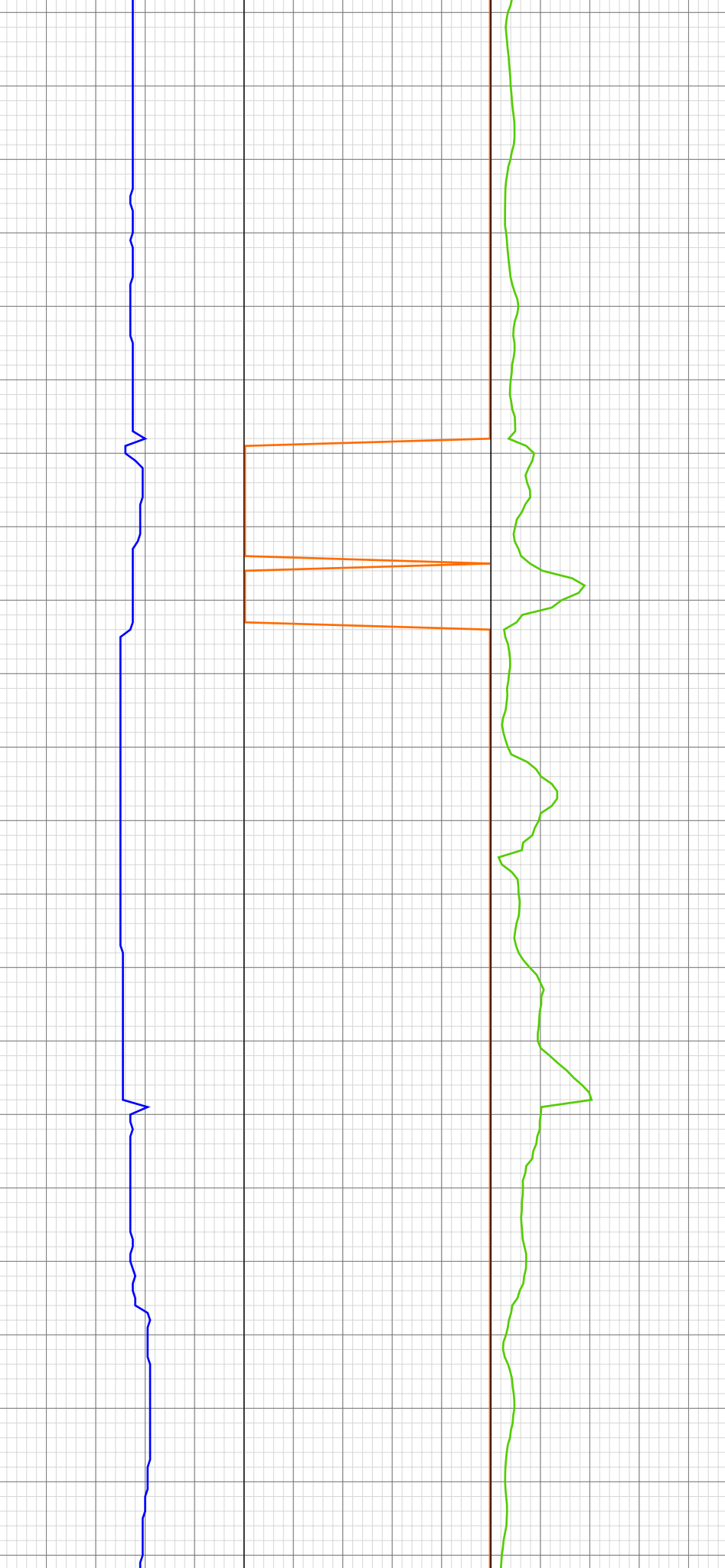
7929.04ft: ROTATING

7956.59ft: VIS47 WT10.20

7975.00ft: IN TALLY: HOLE DEPTH
SET TO 7975.3
7975.00ft: ZWOB from SideKick
sk-06-03-3103
7975.00ft: ZDiffPressure from
SideKick sk-06-03-3103
7975.26ft: SPR
7975.26ft: Connection at 7975.3
7975.26ft: SLIDING
7975.26ft: SURVEY @ 7920 IN 1.1
AZ 38.6 TVD 7776

8000.00ft: ZDiffPressure from
SideKick sk-06-03-3103
8000.43ft: ROTATING

19:30 8010
19:35 8020
19:40 8030
19:45 8040
19:50 8050
19:57 8060
20:16 8070
20:28 8080
20:38 8090
20:51 8100
20:57 8110
21:04 8120
21:11 8130
21:17 8140
21:23 8150
21:38 8160
21:44 8170
21:49 8180
21:55 8190
21:59 8200
22:04 8210
22:09 8220



8067.00ft: ZWOB from SideKick sk-06-03-3103
8067.00ft: ZDiffPressure from SideKick sk-06-03-3103
8067.00ft: ZWOB from SideKick sk-06-03-3103
8067.45ft: Connection at 8066.6
8075.98ft: MUD VIS 0.45
8076.25ft: MUD WEIGHT 10.20

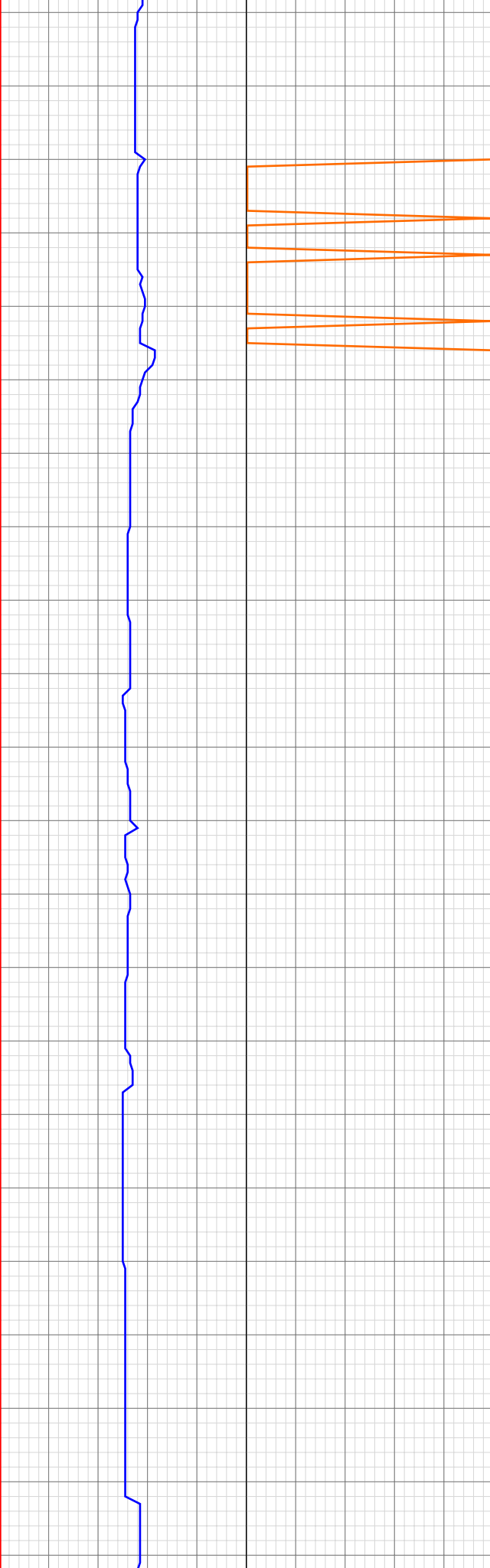
8092.72ft: PUMP SWEEP
8093.01ft: ZWOB from SideKick sk-06-03-3103
8093.01ft: ZERO ALL PUMPS from SideKick sk-05-05-1268
8093.64ft: ROTATING
8093.64ft: MAKE UP 20 GPM

8127.99ft: MUD VIS 0.43
8127.99ft: MUD WEIGHT 10.20

8158.01ft: ZDiffPressure from SideKick sk-06-03-3103
8158.43ft: Connection at 8158.1
8158.43ft: ZWOB from SideKick sk-06-03-3103

8206.99ft: MUD VIS 0.59
8208.01ft: MUD WEIGHT 10.30

22:15 8230
22:20 8240
22:37 8250
22:48 8260
23:04 8270
23:18 8280
23:25 8290
23:32 8300
23:38 8310
23:43 8320
23:57 8330
Oct 30, 2010
00:20 8340
00:34 8350
00:45 8360
00:56 8370
01:14 8380
01:32 8390
01:46 8400
01:54 8410
01:58 8420
02:04 8430
02:18 8440

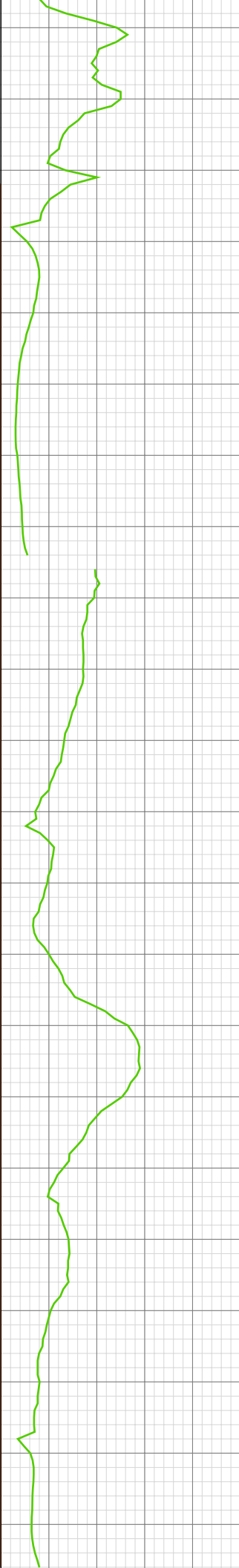
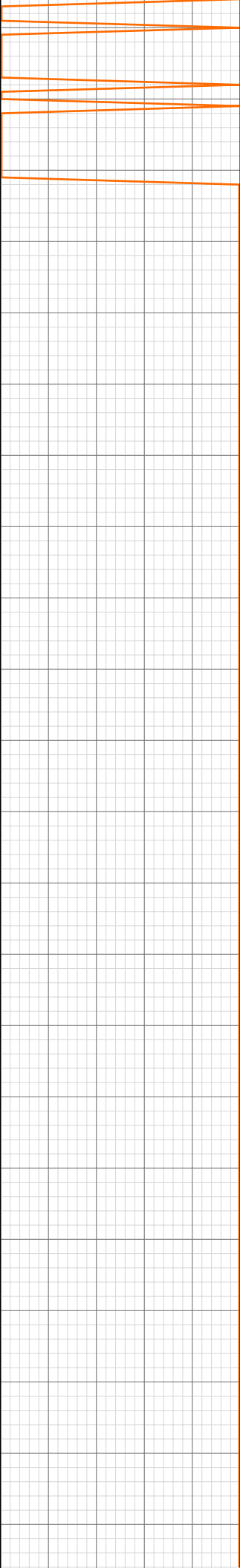
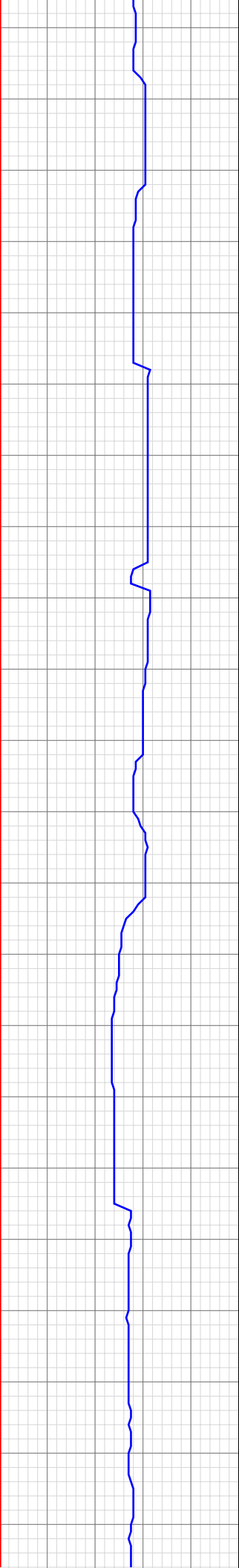


8249.02ft: ZWOB from SideKick sk-06-03-3103
8249.31ft: Connection at 8249.5
8249.31ft: SURVEY @ 8194 IN .40 AZ 144.5 TVD 8050
8249.31ft: 021TGAS 03090394 SW0.27 HW25.00 - 211 days on
8249.31ft: ZDIFFPressure from SideKick sk-06-03-3103

8275.00ft: ZDIFFPressure from SideKick sk-06-03-3103
8276.61ft: PUMP SWEEP

8285.99ft: ZERO ALL PUMPS from SideKick sk-05-05-1268
8287.99ft: MUD VIS 0.53
8287.99ft: MUD WEIGHT 10.30
8321.00ft: ZDIFFPressure from SideKick sk-06-03-3103
8321.56ft: SLOW DOWN FOR FORMATION CHANGE
8339.99ft: ZWOB from SideKick sk-06-03-3103
8339.99ft: ZDIFFPressure from SideKick sk-06-03-3103
8340.98ft: Connection at 8340.9
8340.98ft: SURVEY @ 8285 IN 0.0 AZ 257.1 TVD 8141
8375.00ft: MUD VIS 0.48
8375.00ft: MUD WEIGHT 10.30
8400.00ft: ZDIFFPressure from SideKick sk-06-03-3103
8400.00ft: ZWOB from SideKick sk-06-03-3103
8402.00ft: ZERO ALL PUMPS from SideKick sk-05-05-1268
8431.99ft: ZWOB from SideKick sk-06-03-3103
8431.99ft: ZDIFFPressure from SideKick sk-06-03-3103
8432.58ft: Connection at 8432.4
8432.58ft: SURVEY @ 8377 IN .8 AZ 257.9 TVD 8233
8452.46ft: SLIDING
8485.01ft: MUD VIS 0.53
8485.01ft: MUD WEIGHT 10.35
8523.00ft: IN TALLY: HOLE DEPTH SET TO 8523.9
8523.00ft: ZDIFFPressure from SideKick sk-06-03-3103
8523.00ft: ZWOB from SideKick sk-06-03-3103
8523.92ft: SURVEY @ 8468 IN 1.0 AZ 280.5 TVD 8324
8526.15ft: Connection at 8523.9
8595.01ft: MUD VIS 0.56
8596.29ft: MUD WEIGHT 10.35
8614.01ft: Connection at 8615.5
8614.99ft: IN TALLY: HOLE DEPTH SET TO 8615.5
8614.99ft: ZWOB from SideKick sk-06-03-3103
8614.99ft: ZDIFFPressure from SideKick sk-06-03-3103
8615.45ft: SURVEY @ 8560 IN .8 AZ 239.6 TVD 8416
8667.00ft: MUD VIS 0.59
8667.00ft: MUD WEIGHT 10.40
8704.00ft: IN TALLY: HOLE DEPTH SET TO 8706.9
8704.00ft: ZDIFFPressure from SideKick sk-06-03-3103
8704.00ft: ZWOB from SideKick sk-06-03-3103
8706.86ft: Connection at 8706.9
8706.86ft: SURVEY @ 8651 IN 1.6 AZ 272.5 TVD 8507
8785.01ft: MUD VIS 0.68
8785.89ft: MUD WEIGHT 10.50
8797.90ft: Connection at 8798.4
8798.00ft: IN TALLY: HOLE DEPTH SET TO 8798.4
8798.00ft: ZWOB from SideKick sk-06-03-3103
8798.00ft: ZDIFFPressure from SideKick sk-06-03-3103
8798.39ft: SURVEY @ 8743/ 2.1 INC/ 248.1 AZ/ 8599.5 TVD
8866.01ft: MUD VIS 0.58
8866.01ft: MUD WEIGHT 10.60
8889.73ft: SURVEY @ 8834/ 2.4 INC/ 265.4 AZ/ 8690.5 TVD
8889.99ft: IN TALLY: HOLE DEPTH SET TO 8889.7
8890.03ft: Connection at 8889.7
8931.99ft: MUD VIS 0.71
8931.99ft: MUD WEIGHT 10.70

02:25 8450
02:38 8460
02:53 8470
03:06 8480
03:10 8490
03:14 8500
03:18 8510
03:21 8520
03:40 8530
03:45 8540
03:51 8550
03:56 8560
04:06 8570
04:12 8580
04:19 8590
04:22 8600
04:26 8610
04:40 8620
04:47 8630
04:51 8640
04:57 8650
05:02 8660



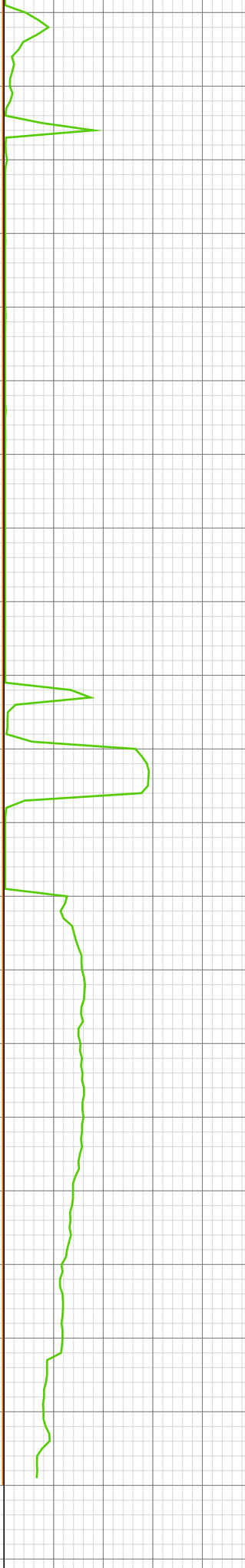
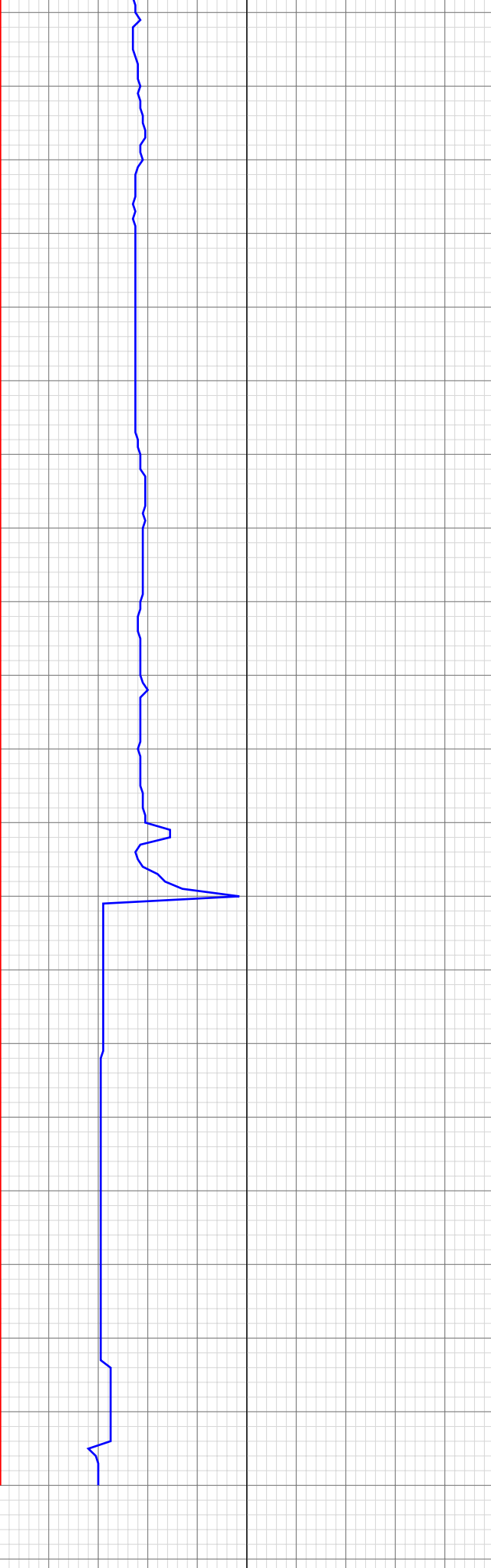
8931.99ft: MUD WEIGHT 10.70
8981.00ft: IN TALLY: HOLE DEPTH SET TO 8981.3
8981.27ft: SURVEY@8926'/ 2.6 INC/ 252.1 AZ/ 8782.4 TVD
8981.46ft: Connection at 8981.3
9008.99ft: MUD VIS 0.55
9008.99ft: MUD WEIGHT 10.80
9008.99ft: ZERO ALL PUMPS from SideKick sk-06-03-3103
9008.99ft: ZERO ALL PUMPS from SideKick sk-06-03-3103
9008.99ft: ZERO ALL PUMPS from SideKick sk-06-03-3103
9008.99ft: MUD VIS 0.43
9008.99ft: MUD WEIGHT 10.60
9008.99ft: MUD VIS 0.51
9008.99ft: MUD WEIGHT 10.65
9008.99ft: MUD WEIGHT 10.70
9008.99ft: ZERO ALL PUMPS from SideKick sk-05-05-1268
9008.99ft: MUD VIS 0.46
9008.99ft: MUD WEIGHT 10.80
9008.99ft: MUD WEIGHT 10.80
9008.99ft: MUD VIS 0.57
9008.99ft: MUD WEIGHT 10.80
9008.99ft: MUD WEIGHT 10.60
9008.99ft: MUD WEIGHT 10.80
9008.99ft: MUD WEIGHT 10.40
9008.99ft: 021TGAS 03090394 SWO.27 HW25.00 - 212 days on
9008.99ft: ZDiffPressure from SideKick sk-06-03-3103
9008.99ft: ZWOB from SideKick sk-06-03-3103
9008.99ft: ZDiffPressure from SideKick sk-06-03-3103
9008.99ft: ZDiffPressure from SideKick sk-06-03-3103
9009.84ft: TRANSFER TO ACTIVE
9009.84ft: TRANSFER TO ACTIVE
9009.84ft: TRANSFER TO ACTIVE
9009.84ft: TRANSFER TO ACTIVE F/ PILL
9009.84ft: TRANSFER F/ ACTIVE T/ PILL
9009.84ft: TRANSFER TO ACTIVE F/PILL
9009.84ft: MUD WEIGHT 10.55
9009.84ft: PUMP #2 ON LINE
9009.84ft: MUD VIS 0.61
9009.84ft: FLOW CHECK
9009.84ft: NO FLOW
9009.84ft: DRAIN CHOKE LINE GAS BUSTER
9014.01ft: ZDiffPressure from SideKick sk-06-03-3103
9025.98ft: MUD VIS 0.43
9025.98ft: MUD WEIGHT 10.80
9060.99ft: MUD VIS 0.46
9061.98ft: MUD WEIGHT 10.85
9072.74ft: Connection at 9072.8
9072.74ft: ZWOB from SideKick sk-06-03-3103
9073.00ft: IN TALLY: HOLE DEPTH SET TO 9072.8
9073.00ft: ZERO ALL PUMPS from SideKick sk-06-03-3103
9073.00ft: ZDiffPressure from SideKick sk-06-03-3103
9083.01ft: MUD VIS 0.52
9083.01ft: MUD WEIGHT 10.95
9085.24ft: ZDiffPressure from SideKick sk-06-03-3103
9089.99ft: ZERO ALL PUMPS from SideKick sk-06-03-3103
9089.99ft: MUD VIS 0.45
9089.99ft: MUD WEIGHT 11.00
9089.99ft: MUD VIS 0.42
9089.99ft: MUD WEIGHT 11.00
9089.99ft: VENT GAS BUSTER
9089.99ft: FLOW CHECK
9089.99ft: 100% TIE OFF BB MB AB JW MM
9089.99ft: TRIPING OUT
9089.99ft: ZERO ALL PUMPS from SideKick sk-05-05-1268
9089.99ft: PUMP SLUG
9089.99ft: BLOWOUT TOPDRIVE
9089.99ft: WORK TIGHT PIPE
9089.99ft: ZERO ALL PUMPS from SideKick sk-06-03-3103
9089.99ft: BUILDING VOLUME
9089.99ft: MUD VIS 0.35
9089.99ft: MUD WEIGHT 10.02
9089.99ft: ZERO ALL PUMPS from SideKick sk-06-03-3103
9089.99ft: MUD VIS 11.50
9089.99ft: MUD VIS 0.43
9089.99ft: MUD WEIGHT 11.60
9089.99ft: MUD VIS 0.35
9089.99ft: SHUT DOWN TO BUILD VOLUME
9089.99ft: MUD WEIGHT 10.80
9089.99ft: MUD VIS 0.41
9089.99ft: MUD WEIGHT 10.60
9089.99ft: MUD VIS 0.43
9089.99ft: MUD WEIGHT 10.70
9089.99ft: TRANSFERRED 70.00
9089.99ft: MUD WEIGHT 10.60
9089.99ft: MUD VIS 0.41

05:06 8670
05:10 8680
05:16 8690
05:21 8700
05:33 8710
05:40 8720
05:47 8730
05:53 8740
05:57 8750
06:01 8760
06:06 8770
06:11 8780
06:17 8790
06:29 8800
06:34 8810
06:39 8820
06:49 8830
06:51 8840
06:55 8850
07:03 8860
07:11 8870
07:16 8880



9089.99ft: MUD WEIGHT 10.80
9089.99ft: MS GAS OFF LINE
9089.99ft: MUD VIS 0.40
9089.99ft: MUD WEIGHT 10.70
9089.99ft: MUD VIS 0.41
9089.99ft: MUD WEIGHT 10.80
9089.99ft: MUD VIS 0.42
9089.99ft: MUD WEIGHT 10.70
9089.99ft: MUD VIS 0.44
9089.99ft: MUD WEIGHT 11.60
9089.99ft: MUD VIS 0.40
9089.99ft: MUD WEIGHT 10.80
9089.99ft: MUD VIS 0.58
9089.99ft: MUD WEIGHT 11.10
9089.99ft: FLOW CHECK
9089.99ft: WELL IS FLOWING
9089.99ft: MUD VIS 11.30
9089.99ft: MUD WEIGHT 11.40
9089.99ft: ZERO ALL PUMPS from
SideKick sk-06-03-3103
9089.99ft: TRANSFER TO PRE-MIX
9089.99ft: TURN OFF TANK #8
9089.99ft: MUD VIS 0.41
9089.99ft: MUD WEIGHT 11.10
9089.99ft: MUD VIS 0.40
9089.99ft: MUD WEIGHT 11.20
9089.99ft: MUD VIS 0.40
9089.99ft: MUD WEIGHT 11.10
9089.99ft: MUD VIS 0.42
9089.99ft: MUD WEIGHT 11.00
9089.99ft: MUD VIS 0.40
9089.99ft: MUD WEIGHT 10.80
9089.99ft: MUD VIS 0.41
9089.99ft: MUD WEIGHT 10.70
9089.99ft: MUD VIS 0.42
9089.99ft: MUD WEIGHT 10.50
9089.99ft: MUD VIS 0.42
9089.99ft: MUD WEIGHT 11.00
9089.99ft: MUD VIS 0.41
9089.99ft: MUD WEIGHT 11.10
9089.99ft: MUD VIS 0.41
9089.99ft: MUD WEIGHT 11.40
9089.99ft: MUD VIS 0.47
9089.99ft: MUD WEIGHT 11.00
9089.99ft: MUD VIS 0.46
9089.99ft: MUD WEIGHT 11.30
9089.99ft: MUD VIS 0.45
9089.99ft: MUD WEIGHT 11.20
9089.99ft: MUD VIS 0.44
9089.99ft: MUD WEIGHT 11.20
9089.99ft: TRANSFER TO ACTIVE
9089.99ft: FLOW CHECK
9089.99ft: CIR. PITS THOUGH GUN
LINES FOR LIGHT SPOTS
9089.99ft: T.O.H
9089.99ft: FLOW CHECK
9089.99ft: TRANSFER 40 BBLS
9089.99ft: FLOW CHECK
9089.99ft: 021TGAS 03090394
SW0.27 HW25.00 - 213 days on
9089.99ft: MUD LOSS OVER
SHAKERS 25BBLS
9089.99ft: RECOVER MUD
9089.99ft: MAKE MUD
9089.99ft: TRANSFER TO ACTIVE
50BBLS
9089.99ft: JT 98 BACK REEM OUT
OF HOLE
9089.99ft: ZERO ALL PUMPS from
SideKick sk-06-03-3103
9089.99ft: MUD VIS 0.38
9089.99ft: MUD WEIGHT 11.00
9089.99ft: MUD VIS 0.40
9089.99ft: MUD WEIGHT 11.05
9089.99ft: MUD VIS 0.40
9089.99ft: MUD WEIGHT 11.05
9089.99ft: FLOW CHECK
9089.99ft: MAKE MUD
9089.99ft: TRANSFERRED 20.00
9089.99ft: TRANSFERRED 0.30
9089.99ft: PUMP OUT CELLAR
9089.99ft: MUD VIS 0.46
9089.99ft: MUD WEIGHT 11.00
9089.99ft: MUD VIS 0.43
9089.99ft: MUD WEIGHT 11.00
9089.99ft: MUD VIS 0.40
9089.99ft: MUD WEIGHT 11.00
9089.99ft: BREAK JOINT WITH
TONGS
9089.99ft: FLOW CHECK
9089.99ft: MUD VIS 0.40
9089.99ft: MUD WEIGHT 11.00
9089.99ft: MUD VIS 0.42
9089.99ft: MUD WEIGHT 11.00
9089.99ft: MUD VIS 0.42
9089.99ft: MUD WEIGHT 11.00
9089.99ft: MUD VIS 0.42
9089.99ft: PULL WEAR BUSHING
9089.99ft: MUD VIS 0.43
9089.99ft: MUD WEIGHT 11.00
9089.99ft: MONITOR WELLBORE
9089.99ft: MUD VIS 0.42
9089.99ft: MUD WEIGHT 11.00
9089.99ft: MUD VIS 0.43
9089.99ft: MUD WEIGHT 11.00
9089.99ft: MUD VIS 0.42
9089.99ft: MUD WEIGHT 10.90
9089.99ft: MUD VIS 0.43
9089.99ft: MUD WEIGHT 10.90
9089.99ft: BIT DEPTH CHANGED TO
1317.0 FEET
9089.99ft: HOOK LOAD
THRESHOLD RECALIBRATED TO
34

07:27 8890
07:32 8900
07:37 8910
07:45 8920
07:51 8930
07:54 8940
07:58 8950
08:02 8960
08:06 8970
08:12 8980
08:26 8990
08:30 9000
23:02 9010
23:10 9020
23:19 9030
23:28 9040
23:37 9050
23:49 9060
Oct 31, 2010
00:30 9080
9090
9100



9089.99ft: BIT DEPTH CHANGED TO
1769.0 FEET
9089.99ft: MUD VIS 0.42
9089.99ft: MUD WEIGHT 10.90
9089.99ft: ZERO ALL PUMPS from
SideKick sk-06-03-3103
9089.99ft: MUD VIS 0.41
9089.99ft: MUD WEIGHT 10.90
9089.99ft: MUD VIS 0.44
9089.99ft: MUD WEIGHT 10.90
9089.99ft: ZERO ALL PUMPS from
SideKick sk-06-03-3103
9089.99ft: MUD VIS 0.45
9089.99ft: MUD WEIGHT 11.00
9089.99ft: TRANSFER TO ACTIVE
9089.99ft: TIGHT SPOT
9089.99ft: MUD VIS 0.41
9089.99ft: MUD WEIGHT 11.00
9089.99ft: MUD VIS 0.43
9089.99ft: MUD WEIGHT 11.00
9089.99ft: WHASH # 129
9089.99ft: MUD VIS 0.38
9089.99ft: MUD WEIGHT 10.90
9089.99ft: MUD VIS 0.40
9089.99ft: MUD WEIGHT 10.95
9089.99ft: MUD VIS 0.41
9089.99ft: MUD WEIGHT 11.00
9089.99ft: TRANSFER TO PRE-MIX
F/ ACTIVE
9089.99ft: TRANSFERRED 50.00
9089.99ft: ZERO ALL PUMPS from
SideKick sk-06-03-3103
9089.99ft: ZERO ALL PUMPS from
SideKick sk-06-03-3103
9089.99ft: WASH JNT. # 138
9089.99ft: ZERO ALL PUMPS from
SideKick sk-06-03-3103
9089.99ft: ZDiffPressure from
SideKick sk-06-03-3103
9089.99ft: CIRCULATE BU
9089.99ft: MUD VIS 0.38
9089.99ft: MUD WEIGHT 11.00
9089.99ft: MUD VIS 0.38
9089.99ft: MUD WEIGHT 11.00
9089.99ft: MUD VIS 0.39
9089.99ft: MUD WEIGHT 10.95
9089.99ft: ZERO ALL PUMPS from
SideKick sk-06-03-3103
9089.99ft: CIR. OUT PASON GAS
9089.99ft: MUD VIS 0.38
9089.99ft: MUD WEIGHT 11.00
9089.99ft: MUD VIS 0.39
9089.99ft: MUD WEIGHT 11.10
9089.99ft: 021TGAS 03090394
SWO.27 HW25.00 - 214 days on
9089.99ft: ZERO ALL PUMPS from
SideKick sk-06-03-3103
9089.99ft: WASH DOWN JOINT 169
9089.99ft: MUD VIS 0.39
9089.99ft: MUD WEIGHT 11.10
9089.99ft: MUD VIS 0.38
9089.99ft: MUD WEIGHT 11.20
9089.99ft: ZERO ALL PUMPS from
SideKick sk-06-03-3103
9089.99ft: MUD VIS 0.38
9089.99ft: MUD WEIGHT 11.00
9089.99ft: FLOW CHECK
9089.99ft: BRING MUD WT UP
T/11.1
9089.99ft: MUD WEIGHT 11.00
9089.99ft: MUD WEIGHT 11.05
9089.99ft: MUD WEIGHT 11.10
9089.99ft: ZERO ALL PUMPS from
SideKick sk-06-03-3103
9089.99ft: MUD WEIGHT 11.15
9089.99ft: MUD WEIGHT 11.10
9089.99ft: MUD WEIGHT 11.10
9089.99ft: CIR. THROW GAS
BUSTER
9089.99ft: MUD WEIGHT 11.10
9089.99ft: MUD WEIGHT 11.15
9089.99ft: MUD WEIGHT 11.15
9089.99ft: MUD WEIGHT 11.05
9089.99ft: FLOW CHECK
9089.99ft: BIT DEPTH CHANGED TO
9025.0 FEET
9089.99ft: ZERO ALL PUMPS from
SideKick sk-06-03-3103
9089.99ft: MUD VIS 0.38
9089.99ft: MUD WEIGHT 11.15
9089.99ft: MUD WEIGHT 11.15
9089.99ft: MUD WEIGHT 11.05
9089.99ft: TRANSFERRED 0.70
9089.99ft: MUD VIS 0.37
9089.99ft: MUD WEIGHT 11.00
9089.99ft: MUD VIS 0.34
9089.99ft: MUD WEIGHT 11.30
9089.99ft: TRANSFER TO PRE-MIX
9089.99ft: PVT Horn Disabled
9089.99ft: 046TGAS-Analyzer air
pressure = zero, check air supply.
Standby
9089.99ft: 022TGAS-Trap needs
service
9089.99ft: HGAS_009: LOCATION2
LEL Sensor disconnected, Press Mute
to acknowledge
9089.99ft: HGAS_007: LOCATION1
LEL Sensor disconnected, Press Mute
to acknowledge

