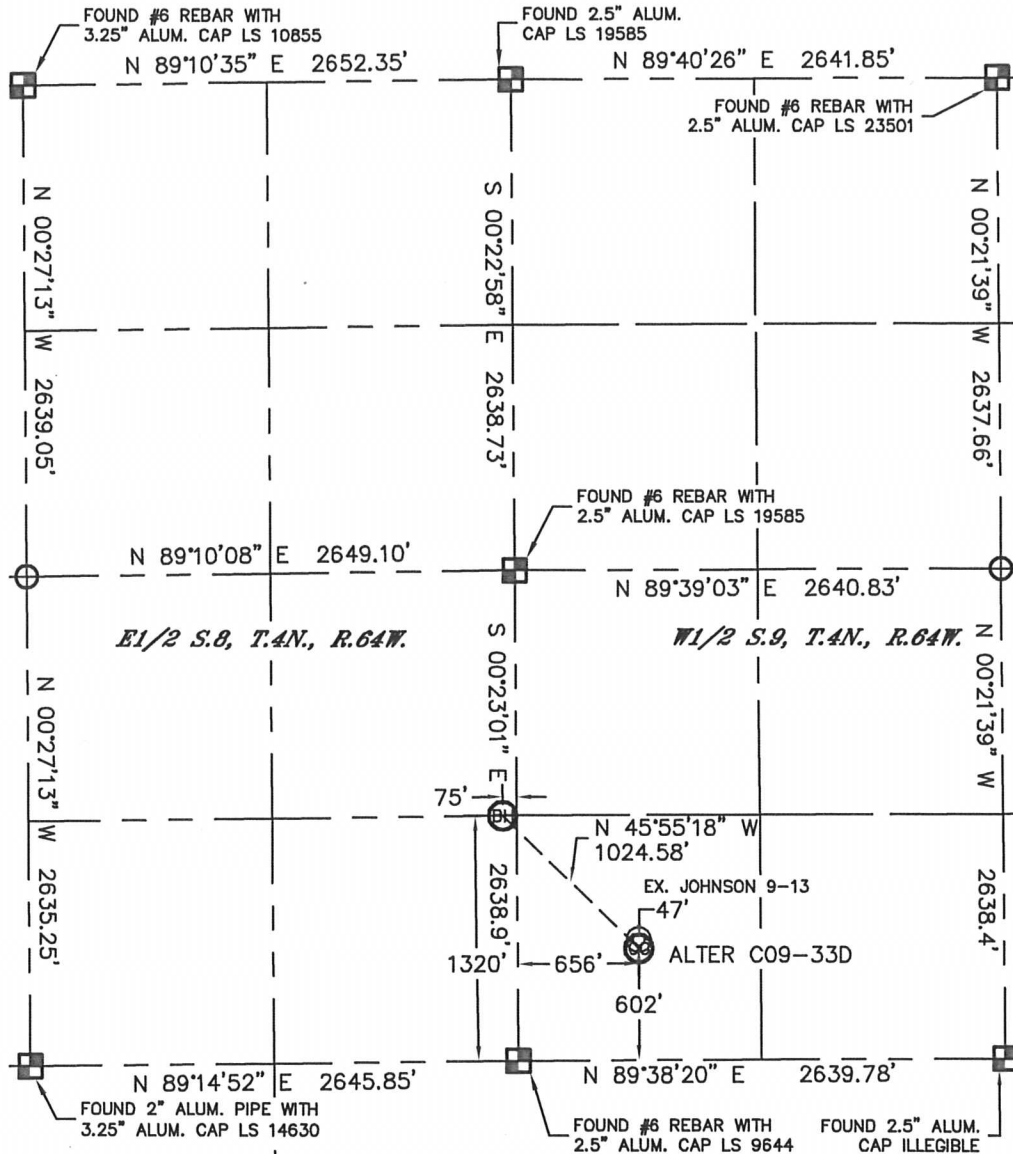


WELL LOCATION CERTIFICATE

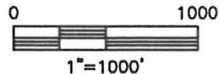
THIS MAP DOES NOT REPRESENT A BOUNDARY SURVEY

SECTION: 9
TOWNSHIP: 4N
RANGE: 64W



In accordance with a request from Matt Verbit with Noble Energy Inc. Lat40°, Inc. has determined the surface location of the ALTER C09-33D to be 602' from the SOUTH line and 656' from the WEST line as measured at right angles from the section lines of Section 9, Township 4 North, Range 64 West and the bottom hole to be 1320' from the SOUTH line and 75' from the EAST line as measured at right angles from the section lines of Section 8, Township 4 North, Range 64 West of the Sixth Principal Meridian, County of Weld, State of Colorado.

I hereby state that this Well Location Certificate was prepared by me, or under my direct supervision, that the fieldwork was completed on 5/18/11, for and on behalf of Noble Energy Inc. That this is not a Land Survey Plat or an Improvement Survey Plat, and that it is not to be relied upon for establishment of fence, building, or other future improvement lines.



NOTE:

- 1) Bearings shown are Grid Bearings of the Colorado State Plane Coordinate System, North Zone, North American Datum 1983/2007. The lineal dimensions as contained herein are based upon the "U.S. Survey Foot."
- 2) Ground elevations are based on an observed GPS elevation (NAVD 1988 DATUM).
- 3) NEAREST EXISTING WELL: JOHNSON 9-13 47'
- 4) IMPROVEMENTS: See LOCATION DRAWING for all visible improvements within 400' of disturbed area.
- 5) SURFACE USE: CROP FIELD
- 6) INSTRUMENT OPERATOR: KYLE RUTZ

NOTE

According to Colorado law, you must commence any legal action based upon any defect in this W.L.C. within three years after you discover such defect. In no event, may any action based upon any defect in this survey be commenced more than ten years after the date of the certificate shown hereon. (13-80-105 C.R.S.)

LEGEND

- = ALIQUOT MONUMENT AS DESCRIBED
- = CALCULATED POSITION

SURFACE LOCATION
LATITUDE: 40.32132°N
LONGITUDE: 104.56270°W
PDOP: 1.7
ELEV: 4701'
1/4, 1/4: SW1/4SW1/4
NEAREST PROPERTY LINE: 296' SOUTHWEST

BOTTOM HOLE
LATITUDE: 40.32330°N
LONGITUDE: 104.56531°W



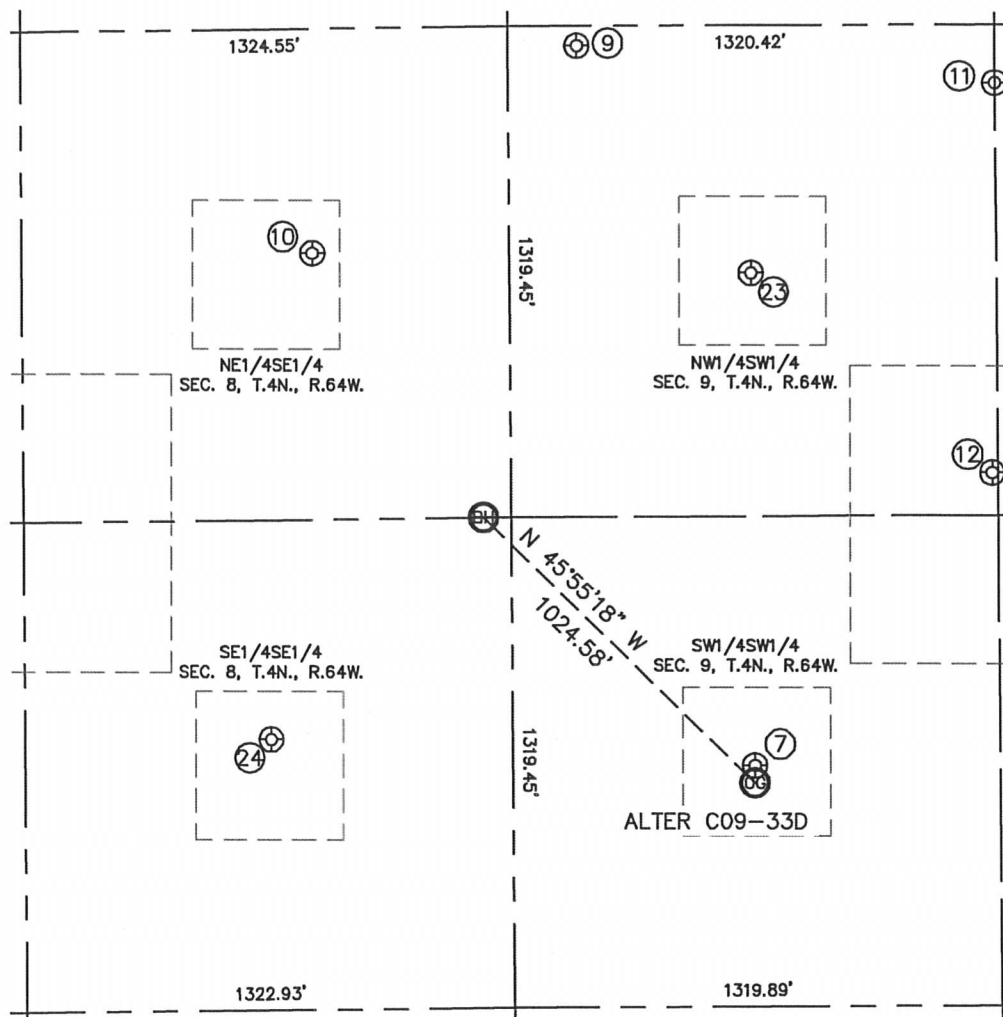
Brian T. Brinkman—On behalf of Lat40°, Inc.
Colorado Licensed Professional
Land Surveyor No. 38175

PROJECT#: 2011011

SITE SKETCH

ALTER C09-33D

SECTION: 9
TOWNSHIP: 4N
RANGE: 64W



⑨

THEA C09-32
NW1/4SW1/4
2586' FSL
187' FWL
LAT-40.32677°N
LONG-104.56435°W
PDOP: 2.5
ELEV: 4724'

⑩

GEHRING 8-914
NE1/4SE1/4
2035' FSL
536' FEL
LAT-40.32525°N
LONG-104.56695°W
PDOP: 1.6
ELEV: 4743'

⑪

AMANDA ALTER C9-20
NW1/4SW1/4
2481' FSL
1320' FWL
LAT-40.32647°N
LONG-104.56029°W
PDOP: 1.5
ELEV: 4708'

⑫

ALTER C9-25
NW1/4SW1/4
1434' FSL
1305' FWL
LAT-40.32359°N
LONG-104.56036°W
PDOP: 1.0
ELEV: 4698'

⑦

JOHNSON 9-13
SW1/4SW1/4
649' FSL
657' FWL
LAT-40.32145°N
LONG-104.56269°W
PDOP: 1.9
ELEV: 4701'

②③

JOHNSON VERN 2
NW1/4SW1/4
1973' FSL
656' FWL
LAT-40.32508°N
LONG-104.56268°W
PDOP: 3.1
ELEV: 4713'

②④

GEHRING 1
SE1/4SE1/4
730' FSL
656' FEL
LAT-40.32167°N
LONG-104.56740°W
PDOP: 1.8
ELEV: 4718'

