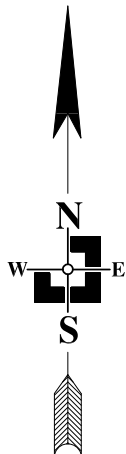
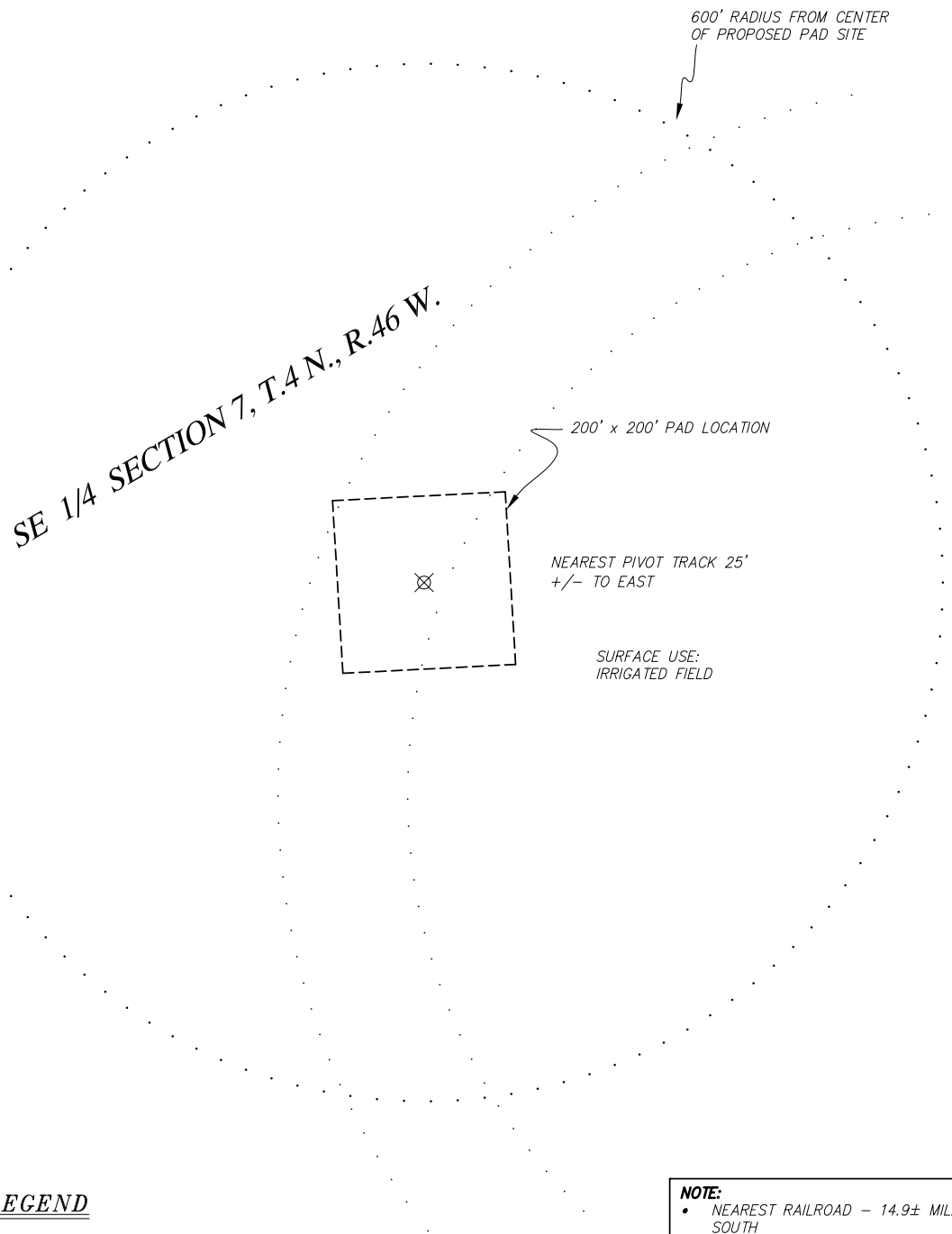


# MONK #33-07 4N-46W

## LOCATION DRAWING

YUMA COUNTY, COLORADO  
AUGUST 11, 2011



### LEGEND

⊗ PROPOSED WELL LOCATION

### NOTE:

- NEAREST RAILROAD - 14.9± MILES TO SOUTH
- NEAREST RIVER - ROCK CREEK - 0.2± MILES NORTHEAST
- NEAREST BODY OF WATER - DERRING LAKE - 13.8± MILES SOUTHWEST
- NEAREST OVERHEAD POWER SOUTH OF SOUTH ROW LINE

SCALE 1" = 200'



THREE CORNERS SURVEYING AND MAPPING, LLC

PO Box 463; 312 Main Street  
Wray, CO 80758

970-332-4133  
3cornerssurveying@centurytel.net

