

# HYDROLOGY MAP

**Operator:** Rosewood Resources, Inc.

**Well Name:** Monk 33-07

**Location:** Yuma, Colorado (NWSE Sec. 7, T4N R46W. 2011' FSL & 1971' FEL)

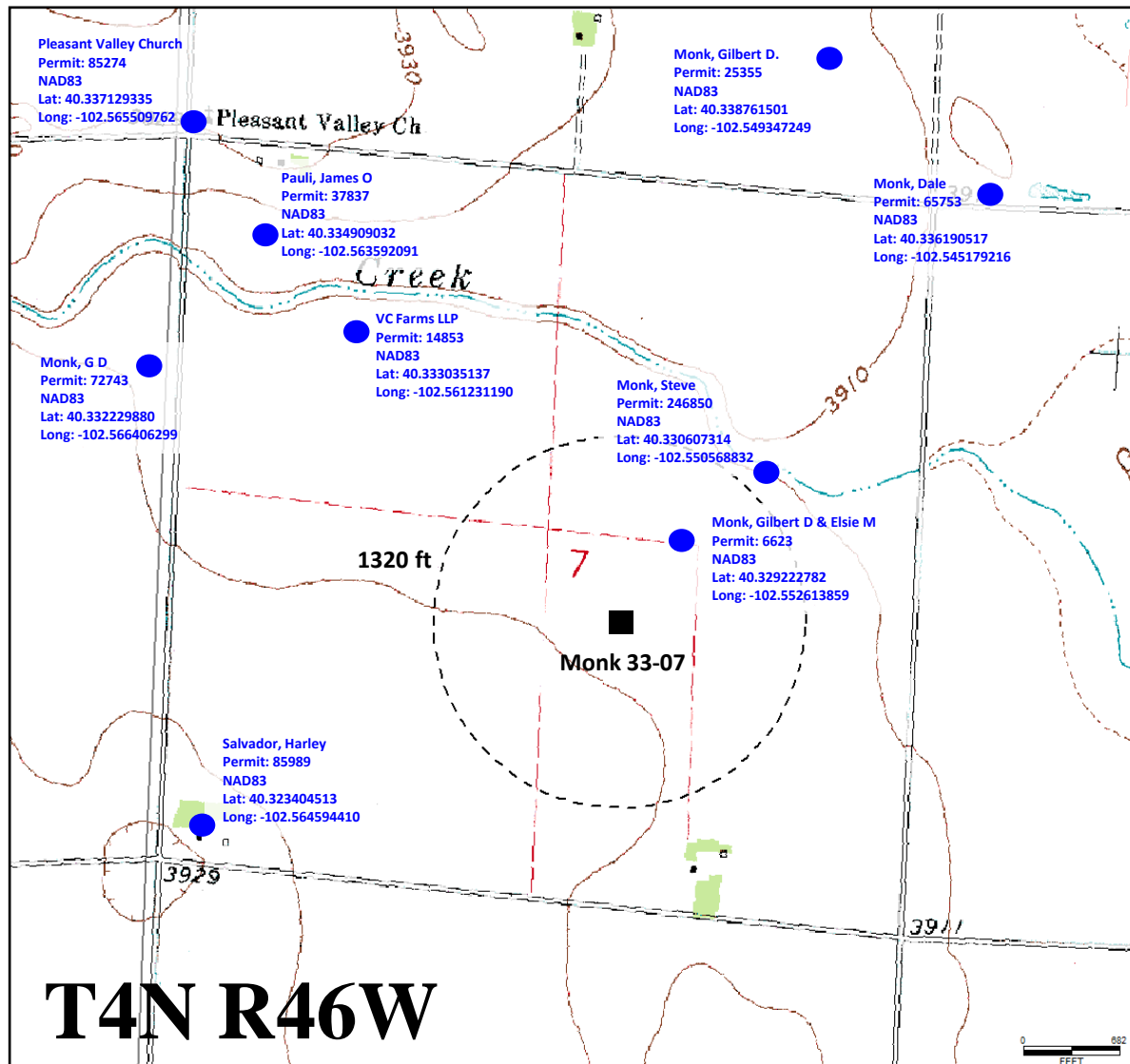
Colorado North (NAD 83)

Latitude: 40.32764

X: 3821182.74

Longitude: -102.55412

Y:1378541.64



**NOTE:**

- 1) Nearest railroad ±14.9 miles to South
- 2) Nearest river- Rock Creek- v0.2 miles Northeast
- 3) Nearest body of water- Derring Lake- ±13.8 miles Southwest
- 4) Nearest overhead power South of South row line