

---

**PLAINS EXPLORATION & PRODUCTION CO**

---

**HELLS GULCH FEDERAL 25-5  
BRUSH CREEK  
Mesa County , Colorado**

**Cement Surface Casing**  
24-Oct-2007

**Job Site Documents**

**The Road to Excellence Starts with Safety**

|  |                                     |   |                        |
|--|-------------------------------------|---|------------------------|
| Sold To #: 339275                            | Ship To #: UNKNOWN                  | Quote #:  | Sales Order #: 5439584 |
| Customer: PLAINS EXPLORATION & PRODUCTION CO |                                     | Customer Rep: DARRYL, ED                              |                        |
| Well Name: HELLS GULCH FEDERAL               | Well #: 25-5                        | API/UWI #:  |                        |
| Field: BRUSH CREEK                           | City (SAP): Rifle                   | County/Parish: Mesa                                   | State: Colorado        |
| Contractor: PXP ENERGY                       | Rig/Platform Name/Num: GREYWOLF 708 |   |                        |
| Job Purpose: Cement Surface Casing           |                                     |   |                        |
| Well Type: Development Well                  |                                     | Job Type: Cement Surface Casing                       |                        |
| Sales Person: MURPHY, SHAUNA                 |                                     | Srcv Supervisor: MANSPEAKER, GUY MBU ID Emp #: 330171 |                        |

**Job Personnel**

| HES Emp Name                   | Exp Hrs | Emp #  | HES Emp Name  | Exp Hrs | Emp #  | HES Emp Name      | Exp Hrs | Emp #  |
|--------------------------------|---------|--------|---------------|---------|--------|-------------------|---------|--------|
| BEDFORD, STEPHEN A             | 18.0    | 342184 | HEIN, GAVIN W | 18.0    | 412516 | MANSPEAKER, GUY E | 18.0    | 330171 |
| SHAHNOOSHI, ALIREZA Farooshani | 18.0    | 391960 |               |         |        |                   |         |        |

**Equipment**

| HES Unit # | Distance-1 way | HES Unit # | Distance-1 way | HES Unit # | Distance-1 way | HES Unit # | Distance-1 way |
|------------|----------------|------------|----------------|------------|----------------|------------|----------------|
| 10026549   | 165 mile       | 10086132C  | 165 mile       | 10741259   | 165 mile       | 10829468   | 165 mile       |

**Job Hours**

| Date         | On Location Hours | Operating Hours                                   | Date     | On Location Hours | Operating Hours | Date | On Location Hours | Operating Hours |
|--------------|-------------------|---|----------|-------------------|-----------------|------|-------------------|-----------------|
| 10-24-07     | 4                 |   | 10-25-07 | 14                | 1               |      |                   |                 |
| <b>TOTAL</b> |                   | <i>Total is the sum of each column separately</i> |          |                   |                 |      |                   |                 |

**Job**

**Job Times**

| Formation Name         | Formation Depth (MD) | Top | Bottom            | Called Out    | Date            | Time  | Time Zone |
|------------------------|----------------------|-----|-------------------|---------------|-----------------|-------|-----------|
|                        |                      |     |                   | On Location   | 24 - Oct - 2007 | 15:00 | MST       |
| Form Type              |                      |     | BHST              | Job Started   | 24 - Oct - 2007 | 20:00 | MST       |
| Job depth MD           | 1790. ft             |     | Job Depth TVD     | Job Started   | 25 - Oct - 2007 | 10:37 | MST       |
| Water Depth            |                      |     | Wk Ht Above Floor | Job Completed | 25 - Oct - 2007 | 11:41 | MST       |
| Perforation Depth (MD) | From                 |     | To                | Departed Loc  | 25 - Oct - 2007 | 14:00 | MST       |

**Well Data**

| Description           | New / Used | Max pressure psig | Size in | ID in | Weight lbm/ft | Thread | Grade | Top MD ft | Bottom MD ft | Top TVD ft | Bottom TVD ft |
|-----------------------|------------|-------------------|---------|-------|---------------|--------|-------|-----------|--------------|------------|---------------|
| 12 1/4" Open Hole     |            |                   |         | 12.25 |               |        |       |           | 1800.        |            |               |
| 8 5/8" Surface Casing | New        |                   | 8.625   | 8.097 | 32.           | 8 RD   | J-55  |           | 1790.        |            |               |

**Sales/Rental/3<sup>rd</sup> Party (HES)**

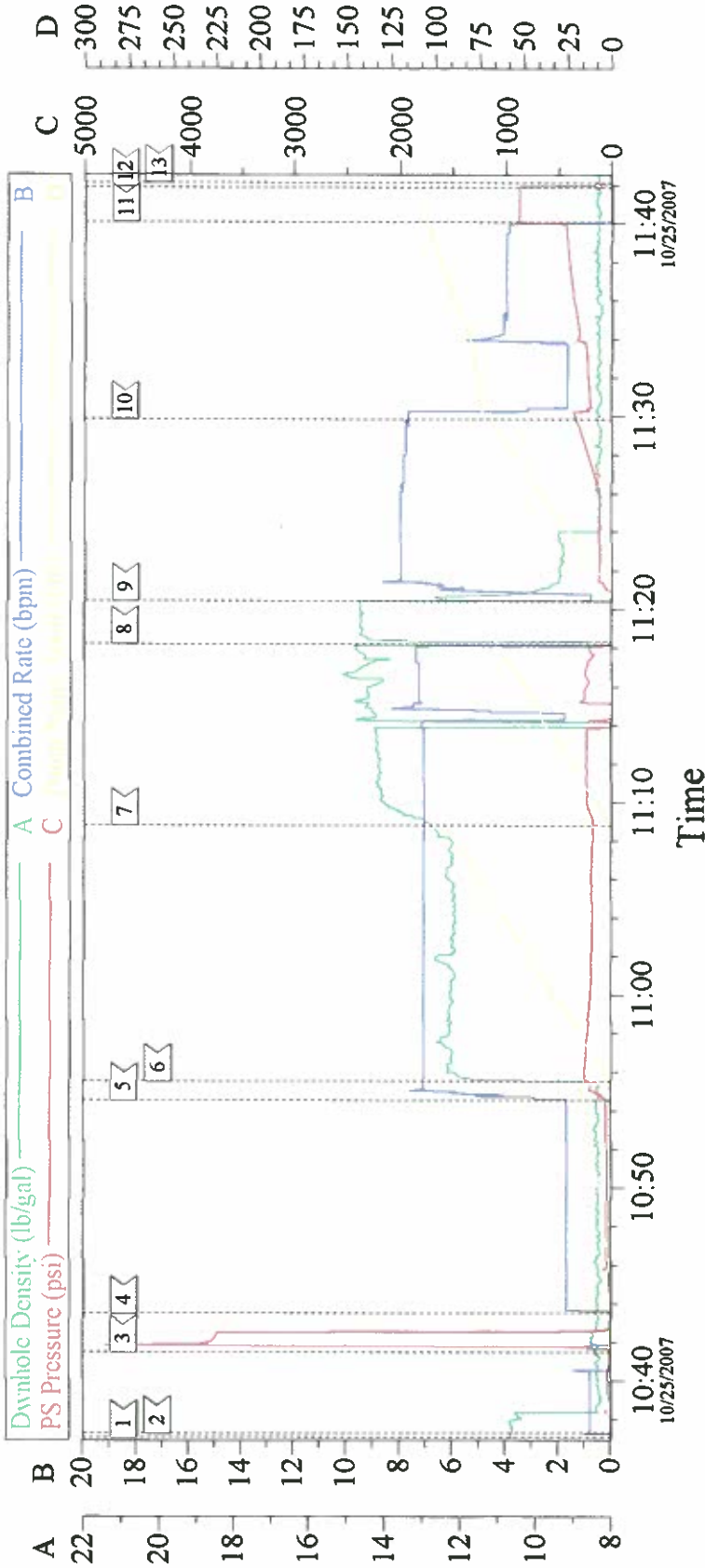
| Description                                  | Qty | Qty uom | Depth | Supplier |
|--|-----|---------|-------|----------|
| PLUG,CMTG, TOP, 8 5/8, HWE, 7.20 MIN/8.09 MA | 1   | EA      |       |          |
| CLR,FLT, 8-5/8 8RD 24-44PPF, 2-3/4SSII       | 1   | EA      |       |          |
| CLP,LIM, 8 5/8, HNGD, FRICT GRIP, WTH DRAW   | 1   | EA      |       |          |
| CENTRALIZER ASSY - API - 8-5/8 CSG X         | 12  | EA      |       |          |
| SHOE,GID, 8-5/8 8RD                          | 1   | EA      |       |          |
| KIT,HALL WELD-A                              | 1   | EA      |       |          |

**Tools and Accessories**

| Type         | Size   | Qty | Make | Depth | Type        | Size | Qty | Make | Depth | Type           | Size   | Qty | Make |
|--------------|--------|-----|------|-------|-------------|------|-----|------|-------|----------------|--------|-----|------|
| Guide Shoe   | 8 5/8" | 1   |      |       | Packer      |      |     |      |       | Top Plug       | 8 5/8" | 1   |      |
| Float Shoe   | 8 5/8" |     |      |       | Bridge Plug |      |     |      |       | Bottom Plug    |        |     |      |
| Float Collar | 8 5/8" | 1   |      |       | Retainer    |      |     |      |       | SSR plug set   |        |     |      |
| Insert Float | 8 5/8" |     |      |       |             |      |     |      |       | Plug Container | 8 5/8" | 1   |      |
| Stage Tool   |        |     |      |       |             |      |     |      |       | Centralizers   | 8 5/8" | 12  |      |

| Miscellaneous Materials                  |              |                               |           |                 |                                   |                 |                        |                           |                  |              |                        |
|--|--------------|-------------------------------|-----------|-----------------|-----------------------------------|-----------------|------------------------|---------------------------|------------------|--------------|------------------------|
| Gelling Agt                              |              | Conc                          |           | Surfactant      |                                   | Conc            |                        | Acid Type                 |                  | Qty          | Conc %                 |
| Treatment Fld                            |              | Conc                          |           | Inhibitor       |                                   | Conc            |                        | Sand Type                 |                  | Size         | Qty                    |
| Fluid Data                               |              |                               |           |                 |                                   |                 |                        |                           |                  |              |                        |
| Stage/Plug #: 1                          |              |                               |           |                 |                                   |                 |                        |                           |                  |              |                        |
| Fluid #                                  | Stage Type   | Fluid Name                    |           |                 | Qty                               | Qty uom         | Mixing Density lbm/gal | Yield ft <sup>3</sup> /sk | Mix Fluid Gal/sk | Rate bbl/min | Total Mix Fluid Gal/sk |
| 1  | WATER SPACER |                               |           |                 | 20.0                              | bbl             | 8.33                   | .0                        | .0               | 8.0          |                        |
| 2  | LEAD CEMENT  | VERSACEM (TM) SYSTEM (452010) |           |                 | 240.0                             | sacks           | 12.3                   | 2.41                      | 13.93            | 8.0          | 13.44                  |
|  |              | 13.438 Gal FRESH WATER        |           |                 |                                   |                 |                        |                           |                  |              |                        |
| 3  | TAIL CEMENT  | SWIFTCEM (TM) SYSTEM (452990) |           |                 | 240.0                             | sacks           | 14.2                   | 1.43                      | 6.88             | 8.0          | 6.66                   |
|  |              | 6.66 Gal FRESH WATER          |           |                 |                                   |                 |                        |                           |                  |              |                        |
| 4  | DISPLACEMENT |                               |           |                 | 107.8                             | bbl             | 8.33                   | .0                        | .0               | 10.0         |                        |
| Calculated Values                        |              |                               | Pressures |                 |                                   | Volumes         |                        |                           |                  |              |                        |
| Displacement                             | 107.8        | Shut In: Instant              |           |                 | Lost Returns                      | no              | Cement Slurry          |                           | 164.1            | Pad          |                        |
| Top Of Cement                            | Surface      | 5 Min                         |           |                 | Cement Returns                    | 23              | Actual Displacement    |                           | 105.8            | Treatment    |                        |
| Frac Gradient                            |              | 15 Min                        |           |                 | Spacers                           | 20              | Load and Breakdown     |                           |                  | Total Job    |                        |
| Rates                                    |              |                               |           |                 |                                   |                 |                        |                           |                  |              |                        |
| Circulating                              | 7            | Mixing                        |           |                 | 7                                 | Displacement    | 8                      | Avg. Job                  |                  | 7            |                        |
| Cement Left In Pipe                      |              | Amount                        | 19.28 ft  | Reason          | Shoe Joint                        |                 |                        |                           |                  |              |                        |
| Frac Ring # 1 @                          | ID           | Frac ring # 2 @               | ID        | Frac Ring # 3 @ | ID                                | Frac Ring # 4 @ | ID                     |                           |                  |              |                        |
| The Information Stated Herein Is Correct |              |                               |           |                 | Customer Representative Signature |                 |                        |                           |                  |              |                        |

# 8 5/8" Surface



### Event Log

|    |                   |          |    |                       |          |    |                         |          |
|----|-------------------|----------|----|-----------------------|----------|----|-------------------------|----------|
| 1  | Start Job         | 10:37:04 | 2  | Fill Lines            | 10:37:17 | 3  | Pressure Test Lines     | 10:41:30 |
| 4  | Pump Water Spacer | 10:43:30 | 5  | Pickup Rate           | 10:54:32 | 6  | Pump Lead Cement        | 10:55:32 |
| 7  | Pump Tail Cement  | 11:08:47 | 8  | Shut Down / Drop Plug | 11:18:12 | 9  | Pump Water Displacement | 11:20:25 |
| 10 | Slow Rate         | 11:29:50 | 11 | Bump Plug             | 11:40:04 | 12 | Check Float             | 11:41:52 |
| 13 | End Job           | 11:42:05 |    |                       |          |    |                         |          |

|                   |                |              |                     |           |            |
|-------------------|----------------|--------------|---------------------|-----------|------------|
| Customer:         | PXP            | Job Date:    | 10-25-07            | Ticket #: | 5439584    |
| Well Description: | 8 5/8" Surface | CEMENTER     | GUY MANSPEAKER      | ADC USED  | YES        |
| LEASE/WELL#       | HGF 25-5       | DRIVER/TRUCK | Ali Shahnnooshi /#3 | CO REP    | Ed Darrell |
|                   |                |              |                     |           |            |