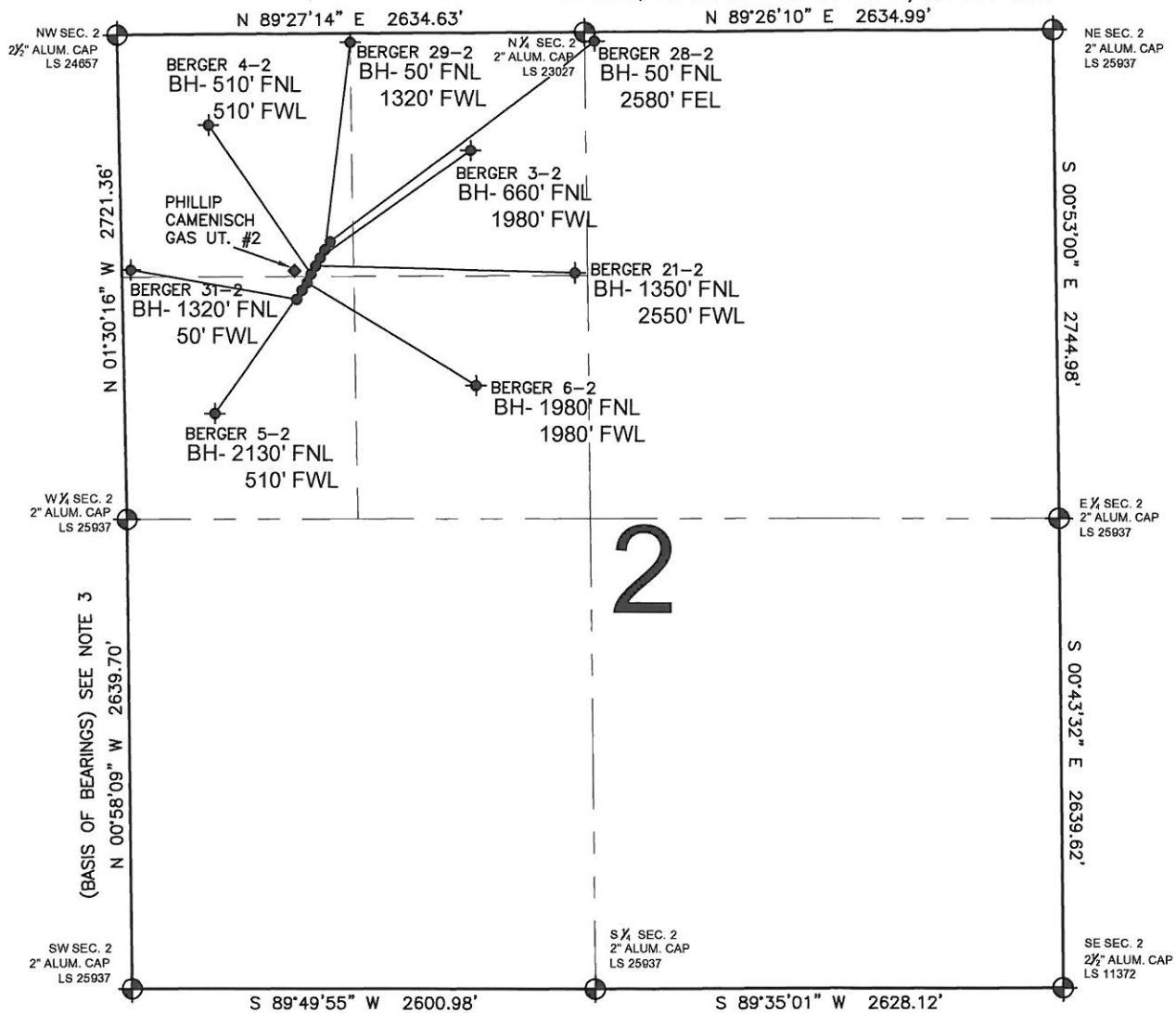


# PAD DRAWING: BERGER 8-PAD

## SECTION 2, TOWNSHIP 1 NORTH, RANGE 67 WEST, 6TH P.M.



### LEGEND

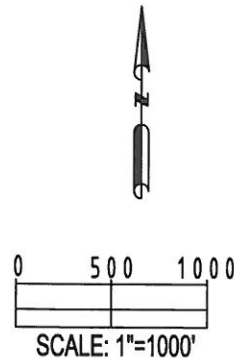
- ⊕ = EXISTING MONUMENT
- ⬮ = BOTTOM HOLE
- BH= BOTTOM HOLE
- = PROPOSED WELL
- ◆ = EXISTING WELL

### NOTES:

- THIS SURVEY WAS DONE BY GPS METHODS AND CONFORMS TO THE MINIMUM STANDARDS SET BY THE C.O.G.C.C., RULE NO. 215 (PDOP VALUE IS LESS THAN 6.0, LATITUDE AND LONGITUDE ARE ACCURATE TO 5 DECIMAL PLACES, AND GPS OBSERVATIONS ARE DIFFERENTIAL AND DONE BY QUALIFIED PERSONNEL.)
- ELEVATIONS SHOWN AT THE WELL HEAD, AS WELL AS HORIZONTAL CONTROL, ARE BASED ON GPS-RTK VALUES DERIVED FROM DOING 2-HOUR STATIC GPS SESSIONS AND REDUCTIONS USING O.P.U.S. SOLUTIONS.  
VERTICAL = NAVD88; HORIZONTAL = NAD83/92
- THE BEARINGS SHOWN HEREON ARE BASED ON GPS OBSERVATIONS BETWEEN THE MONUMENTS SHOWN HEREON AS FOUND ON THE FIELD DATE BELOW.
- DISTANCES SHOWN ARE AT GROUND LEVEL, AS MEASURED IN THE FIELD, WITH TIES TO WELLS MEASURED AT A PERPENDICULAR TO SECTION LINES.

### NOTES:

BERGER 31-2 TO BE AT 1388' FNL, 1048' FWL.  
 BOTTOM HOLE AT 1320' FNL & 50' FWL.  
 BERGER 5-2 TO BE AT 1375' FNL, 1055' FWL.  
 BOTTOM HOLE AT 2130' FNL & 510' FWL.  
 BERGER 6-2 TO BE AT 1362' FNL, 1063' FWL.  
 BOTTOM HOLE AT 1980' FNL & 1980' FWL.  
 BERGER 4-2 TO BE AT 1349' FNL, 1071' FWL.  
 BOTTOM HOLE AT 510' FNL & 510' FWL.  
 BERGER 21-2 TO BE AT 1336' FNL, 1078' FWL.  
 BOTTOM HOLE AT 1350' FNL & 2550' FWL.  
 BERGER 3-2 TO BE AT 1323' FNL, 1086' FWL.  
 BOTTOM HOLE AT 660' FNL & 1980' FWL.  
 BERGER 29-2 TO BE AT 1310' FNL, 1094' FWL.  
 BOTTOM HOLE AT 50' FNL & 1320' FWL.  
 BERGER 28-2 TO BE AT 1297' FNL, 1101' FWL.  
 BOTTOM HOLE AT 50' FNL & 2580' FEL.  
 PHILLIP CAMENISCH GAS UT. #2 IS AT 1326' FNL, 1030' FWL.



### REVISIONS

| INITIAL | DATE     |
|---------|----------|
| TJN     | 11-30-10 |
| SMF     | 12-21-10 |
|         |          |
|         |          |
|         |          |

PREPARED BY:

**PFS**  llc  
 Petroleum Field Services, LLC  
 1801 W. 13th Ave.  
 Denver, CO 80204

KERR-MCGEE OIL & GAS ONSHORE LP

|                           |                                                          |
|---------------------------|----------------------------------------------------------|
| FIELD DATE:<br>04-30-10   | WELL NAME:<br>BERGER 8-PAD                               |
| DRAWING DATE:<br>05-11-10 | SURFACE LOCATION:                                        |
| BY:<br>CP                 | WELD COUNTY, COLORADO<br>W 1/2 NW 1/4, SEC. 2, T1N, R67W |