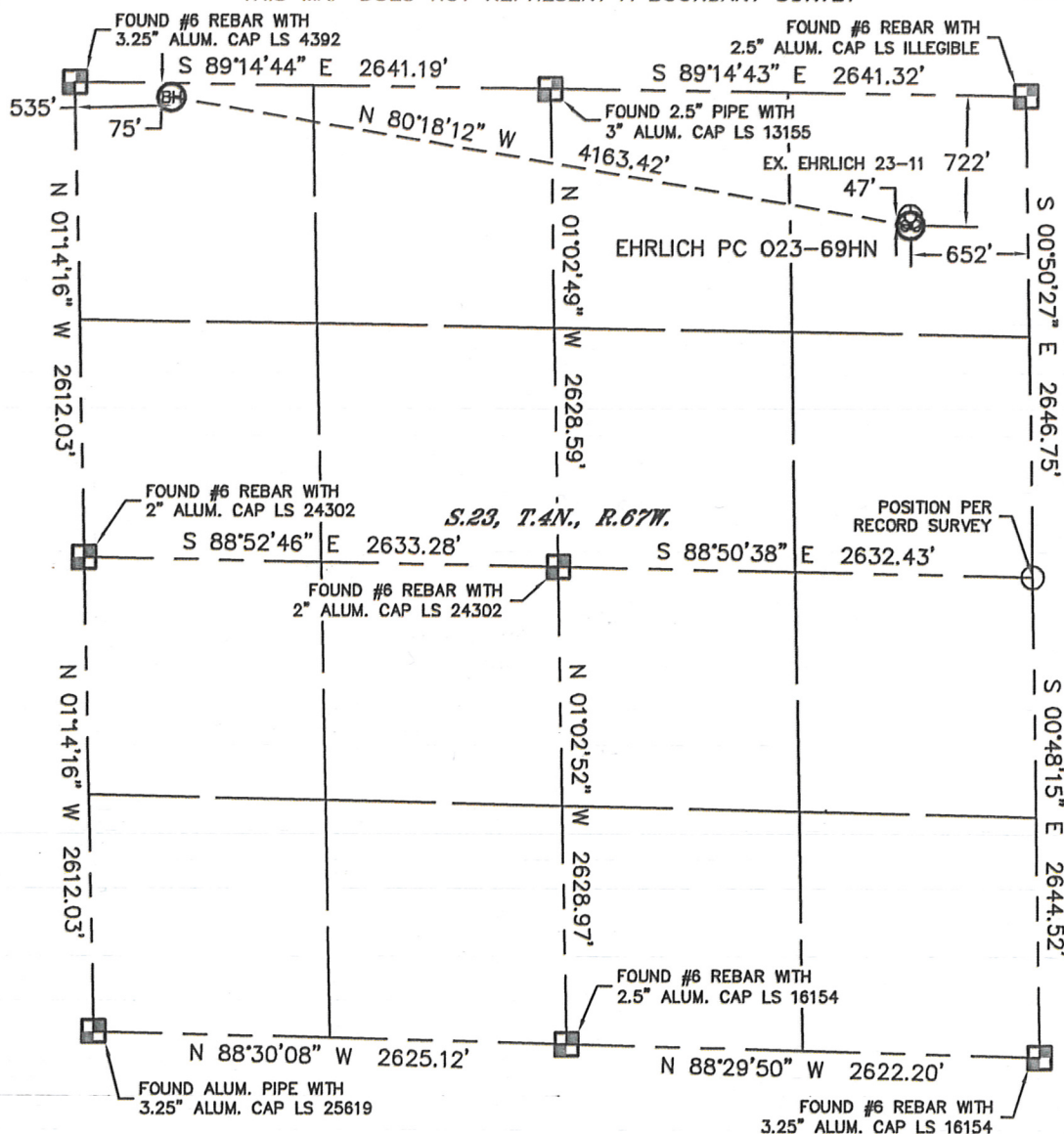


WELL LOCATION CERTIFICATE

SECTION: 23
TOWNSHIP: 4N
RANGE: 67W

THIS MAP DOES NOT REPRESENT A BOUNDARY SURVEY



In accordance with a request from Erik Van Decar with Noble Energy Inc. Lat40°, Inc. has determined the surface location of the EHRlich PC 023-69HN to be 722' from the NORTH line and 652' from the EAST line and the bottom hole to be 75' from the NORTH line and 535' from the WEST line as measured at right angles from the section lines of Section 23, Township 4 North, Range 67 West of the Sixth Principal Meridian, Town of Milliken, County of Weld, State of Colorado.

I hereby state that this Well Location Certificate was prepared by me, or under my direct supervision, that the fieldwork was completed on 5/20/11, for and on behalf of Noble Energy Inc. That this is not a Land Survey Plat or an Improvement Survey Plat, and that it is not to be relied upon for establishment of fence, building, or other future improvement lines.

NOTE:

- 1) Bearings shown are Grid Bearings of the Colorado State Plane Coordinate System, North Zone, North American Datum 1983/2007. The lineal dimensions as contained herein are based upon the "U.S. Survey Foot."
- 2) Ground elevations are based on an observed GPS elevation (NAVD 1988 DATUM).
- 3) NEAREST EXISTING WELL: EHRlich 23-11, 47'
- 4) IMPROVEMENTS: See LOCATION DRAWING for all viable improvements within 400' of disturbed area.
- 5) SURFACE USE: CROP FIELD, EX. WELL SITE
- 6) INSTRUMENT OPERATOR: ADAM KELLY

SURFACE LOCATION
LATITUDE: 40.30270°N
LONGITUDE: 104.85104°W
PDOP: 1.0
ELEV: 4834'
1/4, 1/4: NE1/4NE1/4
NEAREST PROPERTY LINE: 652' EAST

BOTTOM HOLE
LATITUDE: 40.30471°N
LONGITUDE: 104.86573°W

NOTE

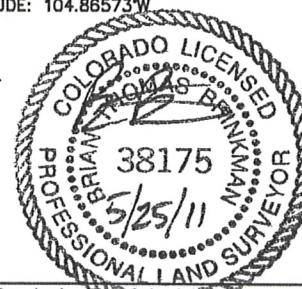
According to Colorado law, you must commence any legal action based upon any defect in this W.L.C. within three years after you discover such defect. In no event, may any action based upon any defect in this survey be commenced more than ten years after the date of the certificate shown hereon. (13-80-105 C.R.S.)

LEGEND

- = ALIQUOT MONUMENT AS DESCRIBED
- = CALCULATED POSITION

Brian T. Brinkman—On behalf of Lat40°, Inc.
Colorado Licensed Professional
Land Surveyor No. 38175

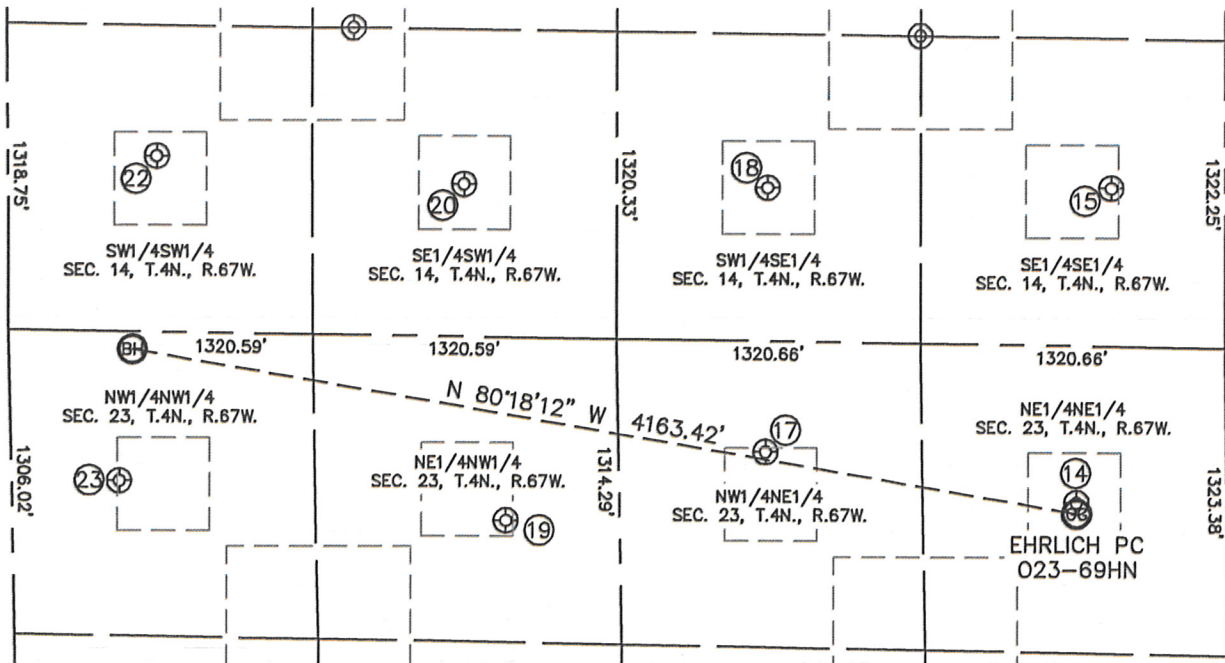
PROJECT#: 2011114



SITE SKETCH

EHRlich PC 023-69HN

SECTION: 23
TOWNSHIP: 4N
RANGE: 67W



⑭
EHRlich 23-11
NE1/4NE1/4
675' FNL
652' FEL
LAT-40.30283°N
LONG-104.85104°W
PDOP: 1.3
ELEV: 4834'

⑮
LHI 14-44
SE1/4SE1/4
679' FSL
492' FEL
LAT-40.30654°N
LONG-104.85047°W
PDOP: 1.6
ELEV: 4839'

⑰
LHI 31-23
NW1/4NE1/4
476' FNL
2000' FEL
LAT-40.30346°N
LONG-104.85588°W
PDOP: 1.2
ELEV: 4859'

⑱
LHI 14-43
SW1/4SE1/4
659' FSL
1985' FEL
LAT-40.30657°N
LONG-104.85582°W
PDOP: 1.2
ELEV: 4834'

⑲
UPRC 23-3E
NE1/4NW1/4
787' FNL
2144' FWL
LAT-40.30266°N
LONG-104.85992°W
PDOP: 1.1
ELEV: 4859'

⑳
LHI 14-34
SE1/4SW1/4
654' FSL
1981' FWL
LAT-40.30663°N
LONG-104.86055°W
PDOP: 1.0
ELEV: 4846'

㉓
STROH 14-2
SW1/4SW1/4
757' FSL
647' FWL
LAT-40.30699°N
LONG-104.86534°W
PDOP: 2.0
ELEV: 4834'

㉔
UPRC 23-417
NW1/4NW1/4
640' FNL
467' FWL
LAT-40.30316°N
LONG-104.86594°W
PDOP: 1.6
ELEV: 4876'

