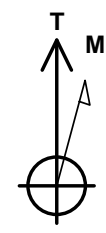
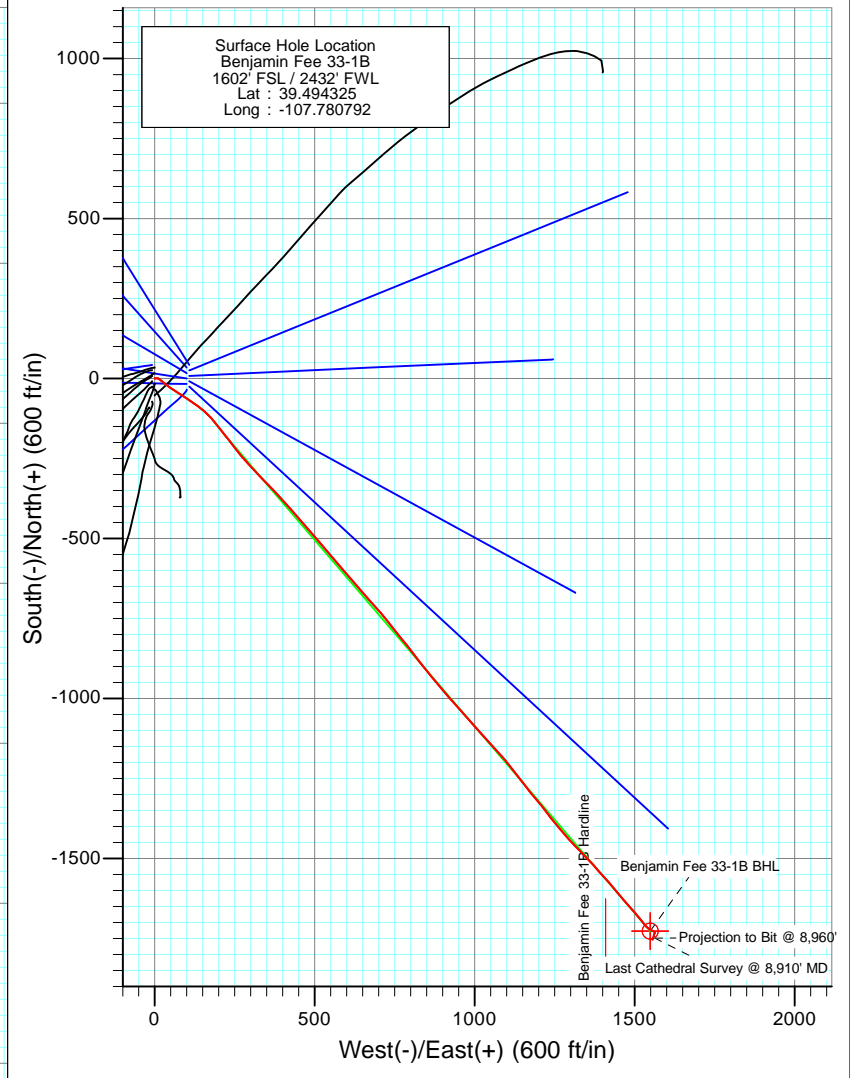
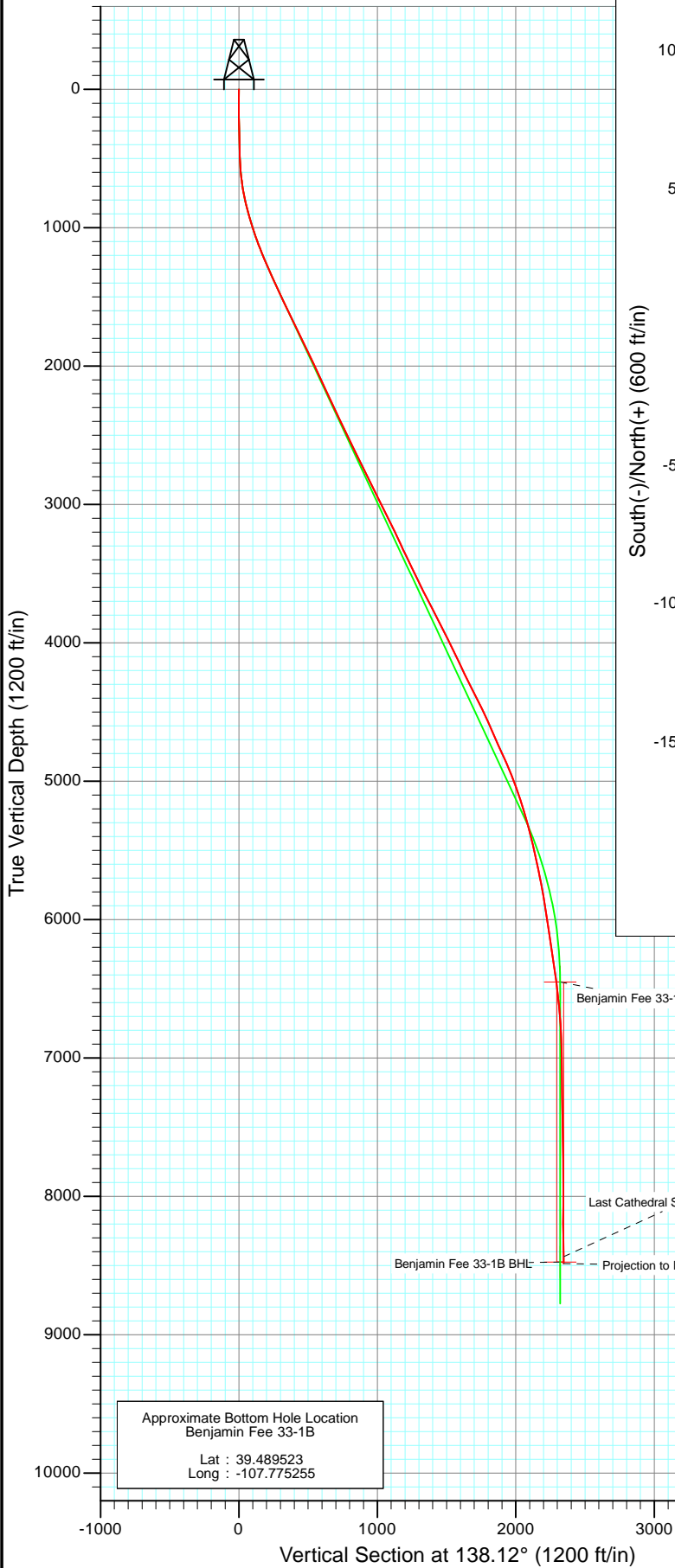




Project: Mamm Creek  
 Site: K28NW Pad  
 Well: Benjamin Fee 33-1B  
 Wellbore: DD  
 Design: FINAL

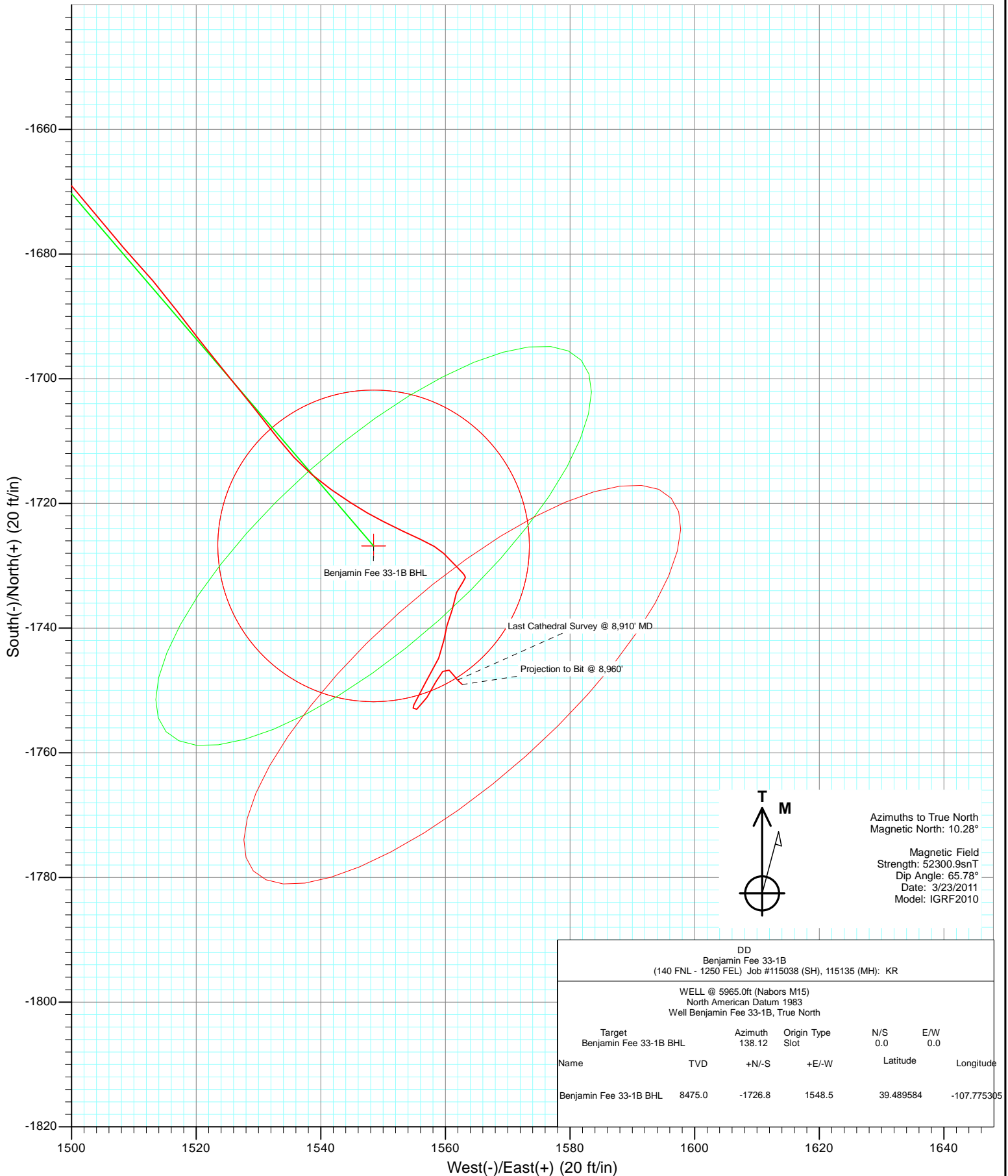


Azimuths to True North  
 Magnetic North: 10.28°  
 Magnetic Field  
 Strength: 52300.9snT  
 Dip Angle: 65.78°  
 Date: 3/23/2011  
 Model: IGRF2010

DD Benjamin Fee 33-1B (140 FNL - 1250 FEL) Job #115038 (SH), 115135 (MH): KR					
WELL @ 5965.0ft (Nabors M15) North American Datum 1983 Well Benjamin Fee 33-1B, True North					
Target	Azimuth	Origin	Type	N/S	E/W
Benjamin Fee 33-1B BHL	138.12	Slot		0.0	0.0
Name	TVD	+N/-S	+E/-W	Latitude	Longitude
Benjamin Fee 33-1B BHL	8475.0	-1726.8	1548.5	39.489584	-107.775305



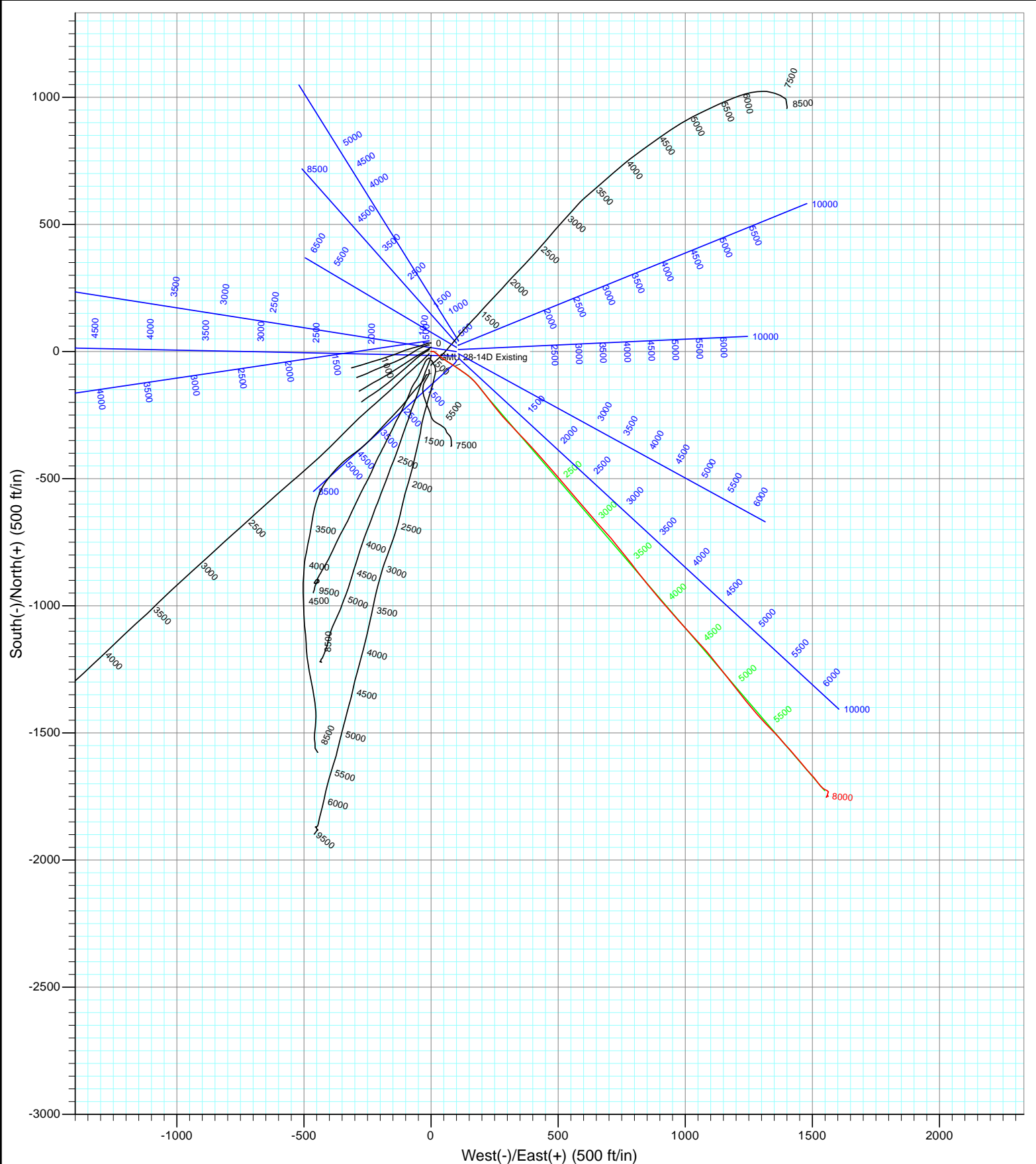
Project: Mamm Creek  
 Site: K28NW Pad  
 Well: Benjamin Fee 33-1B  
 Wellbore: DD  
 Design: FINAL



DD Benjamin Fee 33-1B (140 FNL - 1250 FEL) Job #115038 (SH), 115135 (MH): KR					
WELL @ 5965.0ft (Nabors M15) North American Datum 1983 Well Benjamin Fee 33-1B, True North					
Target Benjamin Fee 33-1B BHL	Azimuth 138.12	Origin Type Slot	N/S 0.0	E/W 0.0	
Name	TVD	+N/-S	+E/-W	Latitude	Longitude
Benjamin Fee 33-1B BHL	8475.0	-1726.8	1548.5	39.489584	-107.775305



Project: Mamm Creek  
Site: K28NW Pad  
Well: Benjamin Fee 33-1B  
Wellbore: DD  
Design: FINAL



## Survey Report

<b>Company:</b> EnCana Oil & Gas (USA) Inc	<b>Local Co-ordinate Reference:</b> Well Benjamin Fee 33-1B
<b>Project:</b> Mamm Creek	<b>TVD Reference:</b> WELL @ 5965.0ft (Nabors M15)
<b>Site:</b> K28NW Pad	<b>MD Reference:</b> WELL @ 5965.0ft (Nabors M15)
<b>Well:</b> Benjamin Fee 33-1B	<b>North Reference:</b> True
<b>Wellbore:</b> DD	<b>Survey Calculation Method:</b> Minimum Curvature
<b>Design:</b> DD	<b>Database:</b> EDM 5000.1 US Multi Users DB

<b>Project</b> Mamm Creek		
<b>Map System:</b> US State Plane 1983	<b>System Datum:</b>	Mean Sea Level
<b>Geo Datum:</b> North American Datum 1983		
<b>Map Zone:</b> Colorado Central Zone		

<b>Site</b> K28NW Pad				
<b>Site Position:</b>	<b>Northing:</b>	1,613,160.16 ft	<b>Latitude:</b>	39.494711
<b>From:</b> Lat/Long	<b>Easting:</b>	2,356,412.22 ft	<b>Longitude:</b>	-107.780819
<b>Position Uncertainty:</b> 0.0 ft	<b>Slot Radius:</b>	13.200 in	<b>Grid Convergence:</b>	-1.44 °

<b>Well</b> Benjamin Fee 33-1B				
<b>Well Position</b>	<b>+N/-S</b>	0.0 ft	<b>Northing:</b>	1,613,019.36 ft
	<b>+E/-W</b>	0.0 ft	<b>Easting:</b>	2,356,416.53 ft
<b>Position Uncertainty</b>		0.0 ft	<b>Wellhead Elevation:</b>	ft
			<b>Latitude:</b>	39.494325
			<b>Longitude:</b>	-107.780792
			<b>Ground Level:</b>	5,943.0 ft

<b>Wellbore</b> DD					
<b>Magnetics</b>	<b>Model Name</b>	<b>Sample Date</b>	<b>Declination (°)</b>	<b>Dip Angle (°)</b>	<b>Field Strength (nT)</b>
	IGRF2010	3/23/2011	10.29	65.78	52,301

<b>Design</b> DD				
<b>Audit Notes:</b>				
<b>Version:</b>	1.0	<b>Phase:</b>	ACTUAL	<b>Tie On Depth:</b> 0.0
<b>Vertical Section:</b>	<b>Depth From (TVD) (ft)</b>	<b>+N/-S (ft)</b>	<b>+E/-W (ft)</b>	<b>Direction (°)</b>
	0.0	0.0	0.0	138.12

<b>Survey Program</b>		<b>Date</b> 4/7/2011
<b>From (ft)</b>	<b>To (ft)</b>	<b>Survey (Wellbore)</b>
125.0	8,960.0	Survey #1 (DD)
		<b>Tool Name</b> MWD
		<b>Description</b> Geolink MWD

<b>Survey</b>									
Measured Depth (ft)	Inclination (°)	Azimuth (°)	Vertical Depth (ft)	+N/-S (ft)	+E/-W (ft)	Vertical Section (ft)	Dogleg Rate (°/100ft)	Build Rate (°/100ft)	Formations / Comments
0.0	0.00	0.00	0.0	0.0	0.0	0.0	0.00	0.00	
125.0	0.40	327.20	125.0	0.4	-0.2	-0.4	0.32	0.32	
156.0	0.40	344.50	156.0	0.6	-0.3	-0.6	0.39	0.00	
186.0	1.10	100.30	186.0	0.6	-0.1	-0.5	4.41	2.33	
217.0	1.70	81.70	217.0	0.6	0.7	0.0	2.40	1.94	
247.0	1.90	85.30	247.0	0.7	1.6	0.5	0.77	0.67	
278.0	2.20	89.90	278.0	0.8	2.7	1.2	1.10	0.97	
309.0	2.40	100.30	308.9	0.7	4.0	2.2	1.49	0.65	
339.0	2.50	98.60	338.9	0.4	5.2	3.2	0.41	0.33	
370.0	1.60	86.10	369.9	0.4	6.3	3.9	3.23	-2.90	
401.0	1.30	72.10	400.9	0.5	7.1	4.3	1.49	-0.97	
432.0	1.80	73.70	431.9	0.8	7.9	4.7	1.62	1.61	
463.0	1.60	102.90	462.8	0.8	8.8	5.3	2.83	-0.65	

## Survey Report

<b>Company:</b>	EnCana Oil & Gas (USA) Inc	<b>Local Co-ordinate Reference:</b>	Well Benjamin Fee 33-1B
<b>Project:</b>	Mamm Creek	<b>TVD Reference:</b>	WELL @ 5965.0ft (Nabors M15)
<b>Site:</b>	K28NW Pad	<b>MD Reference:</b>	WELL @ 5965.0ft (Nabors M15)
<b>Well:</b>	Benjamin Fee 33-1B	<b>North Reference:</b>	True
<b>Wellbore:</b>	DD	<b>Survey Calculation Method:</b>	Minimum Curvature
<b>Design:</b>	DD	<b>Database:</b>	EDM 5000.1 US Multi Users DB

Survey									
Measured Depth (ft)	Inclination (°)	Azimuth (°)	Vertical Depth (ft)	+N/-S (ft)	+E/-W (ft)	Vertical Section (ft)	Dogleg Rate (°/100ft)	Build Rate (°/100ft)	Formations / Comments
494.0	2.40	114.20	493.8	0.4	9.8	6.2	2.87	2.58	
524.0	3.40	118.00	523.8	-0.2	11.2	7.6	3.39	3.33	
555.0	4.10	126.80	554.7	-1.3	12.9	9.6	2.92	2.26	
586.0	5.20	124.70	585.6	-2.8	14.9	12.0	3.59	3.55	
617.0	5.90	125.70	616.5	-4.5	17.3	14.9	2.28	2.26	
648.0	7.00	132.60	647.3	-6.7	20.0	18.4	4.33	3.55	
678.0	8.00	126.30	677.0	-9.2	23.1	22.2	4.31	3.33	
709.0	9.10	132.10	707.7	-12.1	26.6	26.8	4.50	3.55	
740.0	10.20	126.80	738.2	-15.4	30.6	31.9	4.56	3.55	
771.0	11.20	125.70	768.7	-18.8	35.3	37.6	3.29	3.23	
802.0	12.60	128.30	799.0	-22.7	40.4	43.8	4.83	4.52	
863.0	14.90	125.40	858.3	-31.3	52.0	58.0	3.94	3.77	
956.0	17.10	121.20	947.7	-45.4	73.4	82.8	2.67	2.37	
1,048.0	19.20	123.90	1,035.1	-60.8	97.6	110.4	2.46	2.28	
1,140.0	21.20	124.00	1,121.4	-78.5	123.9	141.2	2.17	2.17	
1,231.0	22.90	129.90	1,205.8	-99.1	151.1	174.7	3.07	1.87	
1,357.0	24.30	141.70	1,321.3	-135.2	186.0	224.9	3.90	1.11	
1,538.0	24.70	141.60	1,486.0	-194.1	232.6	299.8	0.22	0.22	
1,633.0	25.40	142.40	1,572.1	-225.8	257.4	339.9	0.82	0.74	
1,728.0	27.00	137.90	1,657.3	-257.9	284.3	381.8	2.68	1.68	
1,823.0	25.80	136.00	1,742.4	-288.8	313.1	424.0	1.54	-1.26	
1,918.0	25.40	136.80	1,828.1	-318.5	341.4	465.0	0.56	-0.42	
2,013.0	25.80	135.50	1,913.8	-348.1	369.8	506.1	0.73	0.42	
2,108.0	24.90	137.70	1,999.6	-377.6	397.8	546.7	1.37	-0.95	
2,203.0	24.70	139.80	2,085.9	-407.6	424.1	586.6	0.95	-0.21	
2,298.0	24.90	138.10	2,172.1	-437.6	450.2	626.4	0.78	0.21	
2,393.0	25.80	138.50	2,257.9	-468.0	477.3	667.1	0.96	0.95	
2,489.0	25.00	140.40	2,344.7	-499.3	504.0	708.2	1.19	-0.83	
2,584.0	24.70	139.60	2,430.9	-529.9	529.7	748.1	0.47	-0.32	
2,679.0	27.10	138.70	2,516.3	-561.2	556.9	789.6	2.56	2.53	
2,774.0	26.30	139.50	2,601.2	-593.5	584.8	832.3	0.92	-0.84	
2,869.0	25.00	139.00	2,686.8	-624.7	611.6	873.4	1.39	-1.37	
2,964.0	26.50	139.60	2,772.4	-656.0	638.6	914.7	1.60	1.58	
3,059.0	25.50	138.00	2,857.8	-687.3	666.0	956.3	1.29	-1.05	
3,154.0	27.50	138.20	2,942.8	-718.8	694.3	998.7	2.11	2.11	
3,249.0	27.10	141.20	3,027.2	-752.1	722.5	1,042.2	1.51	-0.42	
3,344.0	26.00	141.60	3,112.2	-785.2	749.0	1,084.6	1.17	-1.16	
3,439.0	25.50	141.00	3,197.8	-817.5	774.8	1,125.8	0.59	-0.53	
3,535.0	24.50	142.10	3,284.8	-849.2	800.0	1,166.3	1.15	-1.04	
3,630.0	26.20	143.70	3,370.6	-881.7	824.5	1,206.9	1.93	1.79	
3,725.0	26.00	139.30	3,455.9	-914.4	850.5	1,248.6	2.05	-0.21	
3,820.0	25.50	140.80	3,541.5	-946.0	877.0	1,289.8	0.86	-0.53	
3,915.0	26.50	140.60	3,626.9	-978.2	903.4	1,331.4	1.06	1.05	
4,010.0	27.40	137.40	3,711.6	-1,010.7	931.6	1,374.4	1.80	0.95	
4,105.0	27.30	138.10	3,796.0	-1,043.0	961.0	1,418.1	0.35	-0.11	
4,200.0	26.80	138.90	3,880.6	-1,075.3	989.6	1,461.3	0.65	-0.53	
4,296.0	26.40	137.80	3,966.4	-1,107.5	1,018.2	1,504.3	0.66	-0.42	
4,391.0	26.30	137.70	4,051.5	-1,138.7	1,046.5	1,546.4	0.12	-0.11	
4,486.0	25.00	136.90	4,137.2	-1,168.9	1,074.4	1,587.5	1.42	-1.37	
4,582.0	25.50	142.10	4,224.0	-1,200.0	1,101.0	1,628.4	2.37	0.52	
4,677.0	27.30	141.90	4,309.1	-1,233.3	1,127.0	1,670.6	1.90	1.89	
4,772.0	26.90	141.90	4,393.7	-1,267.4	1,153.7	1,713.8	0.42	-0.42	
4,867.0	25.90	141.40	4,478.8	-1,300.5	1,179.9	1,755.9	1.08	-1.05	

## Survey Report

<b>Company:</b>	EnCana Oil & Gas (USA) Inc	<b>Local Co-ordinate Reference:</b>	Well Benjamin Fee 33-1B
<b>Project:</b>	Mamm Creek	<b>TVD Reference:</b>	WELL @ 5965.0ft (Nabors M15)
<b>Site:</b>	K28NW Pad	<b>MD Reference:</b>	WELL @ 5965.0ft (Nabors M15)
<b>Well:</b>	Benjamin Fee 33-1B	<b>North Reference:</b>	True
<b>Wellbore:</b>	DD	<b>Survey Calculation Method:</b>	Minimum Curvature
<b>Design:</b>	DD	<b>Database:</b>	EDM 5000.1 US Multi Users DB

Survey									
Measured Depth (ft)	Inclination (°)	Azimuth (°)	Vertical Depth (ft)	+N/-S (ft)	+E/-W (ft)	Vertical Section (ft)	Dogleg Rate (°/100ft)	Build Rate (°/100ft)	Formations / Comments
4,962.0	24.20	139.70	4,564.8	-1,331.6	1,205.4	1,796.1	1.94	-1.79	
5,058.0	23.60	143.80	4,652.6	-1,362.1	1,229.5	1,834.9	1.84	-0.62	
5,153.0	24.60	139.10	4,739.3	-1,392.4	1,253.7	1,873.6	2.28	1.05	
5,249.0	24.40	140.50	4,826.7	-1,422.8	1,279.4	1,913.4	0.64	-0.21	
5,344.0	22.70	136.10	4,913.8	-1,451.1	1,304.6	1,951.3	2.57	-1.79	
5,439.0	20.50	136.10	5,002.1	-1,476.3	1,328.8	1,986.3	2.32	-2.32	
5,535.0	18.50	136.10	5,092.6	-1,499.4	1,351.0	2,018.3	2.08	-2.08	
5,630.0	17.00	138.50	5,183.1	-1,520.7	1,370.7	2,047.3	1.76	-1.58	
5,724.0	16.50	139.00	5,273.1	-1,541.0	1,388.6	2,074.3	0.55	-0.53	
5,819.0	14.50	136.00	5,364.6	-1,559.8	1,405.7	2,099.7	2.27	-2.11	
5,915.0	13.10	140.10	5,457.8	-1,576.8	1,421.0	2,122.6	1.78	-1.46	
6,010.0	12.10	138.30	5,550.6	-1,592.5	1,434.5	2,143.3	1.13	-1.05	
6,104.0	12.00	141.50	5,642.5	-1,607.5	1,447.2	2,162.9	0.72	-0.11	
6,200.0	10.30	138.00	5,736.7	-1,621.7	1,459.1	2,181.5	1.91	-1.77	
6,295.0	9.90	143.30	5,830.2	-1,634.5	1,469.7	2,198.1	1.06	-0.42	
6,390.0	9.00	135.90	5,923.9	-1,646.4	1,479.7	2,213.7	1.59	-0.95	
6,485.0	8.90	137.10	6,017.8	-1,657.1	1,489.9	2,228.4	0.22	-0.11	
6,580.0	8.60	142.60	6,111.6	-1,668.2	1,499.2	2,242.9	0.94	-0.32	
6,675.0	8.80	137.10	6,205.6	-1,679.1	1,508.5	2,257.2	0.90	0.21	
6,769.0	7.30	143.10	6,298.6	-1,689.2	1,517.0	2,270.3	1.83	-1.60	
6,863.0	8.40	140.60	6,391.7	-1,699.2	1,524.9	2,283.2	1.23	1.17	
6,959.0	7.40	142.50	6,486.8	-1,709.6	1,533.1	2,296.3	1.08	-1.04	
7,054.0	7.10	124.80	6,581.1	-1,717.8	1,541.7	2,308.1	2.36	-0.32	
7,149.0	4.60	116.60	6,675.6	-1,722.8	1,549.9	2,317.4	2.77	-2.63	
7,244.0	3.50	114.20	6,770.3	-1,725.7	1,556.0	2,323.6	1.17	-1.16	
7,339.0	1.90	134.00	6,865.2	-1,728.0	1,559.7	2,327.8	1.93	-1.68	
7,434.0	1.70	138.20	6,960.2	-1,730.2	1,561.8	2,330.8	0.25	-0.21	
7,500.0	0.80	130.30	7,026.2	-1,731.2	1,562.8	2,332.2	1.39	-1.36	
7,529.0	0.80	153.60	7,055.2	-1,731.5	1,563.1	2,332.6	1.11	0.00	
7,560.0	0.70	162.80	7,086.2	-1,731.9	1,563.2	2,333.0	0.50	-0.32	
7,625.0	1.10	235.20	7,151.2	-1,732.6	1,562.8	2,333.3	1.71	0.62	
7,719.0	1.50	192.80	7,245.1	-1,734.3	1,561.8	2,333.9	1.08	0.43	
7,815.0	1.80	195.60	7,341.1	-1,737.0	1,561.1	2,335.4	0.32	0.31	
7,910.0	1.50	200.80	7,436.1	-1,739.6	1,560.3	2,336.8	0.35	-0.32	
8,005.0	1.50	183.40	7,531.0	-1,742.0	1,559.8	2,338.2	0.48	0.00	
8,100.0	2.10	205.70	7,626.0	-1,744.8	1,558.9	2,339.8	0.96	0.63	
8,195.0	3.40	209.70	7,720.9	-1,748.8	1,556.8	2,341.3	1.38	1.37	
8,291.0	1.30	202.20	7,816.8	-1,752.3	1,555.0	2,342.7	2.21	-2.19	
8,385.0	1.10	72.00	7,910.8	-1,753.0	1,555.4	2,343.5	2.32	-0.21	
8,479.0	2.20	25.80	8,004.7	-1,751.1	1,557.1	2,343.2	1.75	1.17	
8,574.0	1.40	36.10	8,099.7	-1,748.5	1,558.5	2,342.3	0.91	-0.84	
8,669.0	0.90	30.90	8,194.7	-1,747.0	1,559.6	2,341.8	0.54	-0.53	
8,765.0	0.90	125.20	8,290.7	-1,746.7	1,560.6	2,342.3	1.37	0.00	
8,860.0	0.70	154.70	8,385.7	-1,747.7	1,561.5	2,343.6	0.47	-0.21	
8,910.0	1.20	133.70	8,435.7	-1,748.3	1,562.0	2,344.4	1.20	1.00	Last Cathedral Survey @ 8,910' MD
8,960.0	1.20	133.70	8,485.6	-1,749.1	1,562.7	2,345.5	0.00	0.00	Projection to Bit @ 8,960'

## Survey Report

<b>Company:</b> EnCana Oil & Gas (USA) Inc	<b>Local Co-ordinate Reference:</b> Well Benjamin Fee 33-1B
<b>Project:</b> Mamm Creek	<b>TVD Reference:</b> WELL @ 5965.0ft (Nabors M15)
<b>Site:</b> K28NW Pad	<b>MD Reference:</b> WELL @ 5965.0ft (Nabors M15)
<b>Well:</b> Benjamin Fee 33-1B	<b>North Reference:</b> True
<b>Wellbore:</b> DD	<b>Survey Calculation Method:</b> Minimum Curvature
<b>Design:</b> DD	<b>Database:</b> EDM 5000.1 US Multi Users DB

Targets									
Target Name	Dip Angle	Dip Dir.	TVD	+N/-S	+E/-W	Northing	Easting	Latitude	Longitude
- hit/miss target	(°)	(°)	(ft)	(ft)	(ft)	(ft)	(ft)		
- Shape									
Benjamin Fee 33-1B Ha	0.00	0.00	-8,475.0	-1,726.8	1,548.5	1,611,254.23	2,357,921.18	39.489584	-107.775305
- survey misses target center by 8786.7ft at 0.0ft MD (0.0 TVD, 0.0 N, 0.0 E)									
- Polygon									
Point 1			-8,475.0	100.0	-140.0	1,611,357.71	2,357,783.73		
Point 2			-8,475.0	-100.0	-140.0	1,611,157.77	2,357,778.71		
Benjamin Fee 33-1B BH	0.00	0.00	8,475.0	-1,726.8	1,548.5	1,611,254.23	2,357,921.18	39.489584	-107.775305
- survey misses target center by 26.2ft at 8948.8ft MD (8474.5 TVD, -1748.9 N, 1562.6 E)									
- Circle (radius 25.0)									
Benjamin Fee 33-1B TO	0.00	0.00	6,450.0	-1,726.8	1,548.5	1,611,254.23	2,357,921.18	39.489584	-107.775305
- survey misses target center by 27.7ft at 6925.7ft MD (6453.8 TVD, -1706.1 N, 1530.4 E)									
- Point									

Survey Annotations					
Measured Depth	Vertical Depth	Local Coordinates		Comment	
(ft)	(ft)	+N/-S	+E/-W		
		(ft)	(ft)		
8,910.0	8,435.7	-1,748.3	1,562.0	Last Cathedral Survey @ 8,910' MD	
8,960.0	8,485.6	-1,749.1	1,562.7	Projection to Bit @ 8,960'	

Checked By: \_\_\_\_\_ Approved By: \_\_\_\_\_ Date: \_\_\_\_\_